



THE UNIVERSITY OF ARIZONA

Cooperative Extension

Pima County

University of Arizona Cooperative Extension

College of Agriculture, Life & Environmental
Sciences & Cooperative Extension

Pima County Cooperative Extension

Jenn Parlin

Interim Director, Pima County Cooperative Extension, University of Arizona

jparlin@arizona.edu | (520) 626-5161

*Research-based education to improve lives, families,
communities, the environment, and economies.*



Cooperative Extension is a nationally authorized institution implemented through land grant universities to bring agricultural and health education to people.

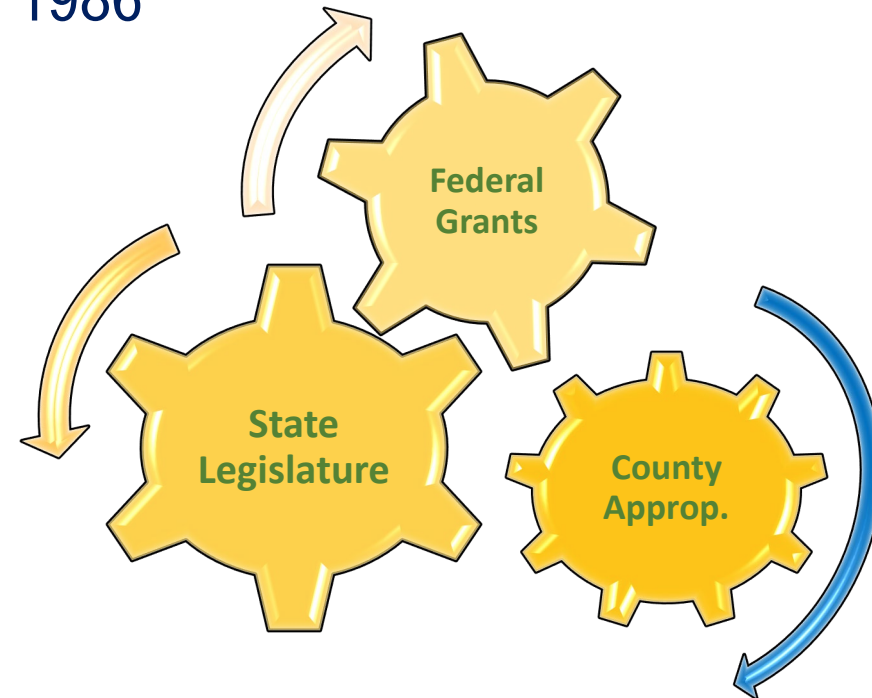
Federally Authorized under the 1914 Smith Lever Act

Re-authorization by the AZ Legislature: 1974 & 1986

Funding

- Federal
- State
- County

Also relies on grants, program revenue, and philanthropy





**Pima Extension Office
& Master Gardener
Demonstration Garden**

**Pima County provides one
office and we rent two others at
a low cost**

The Campbell Office is provided
Rental of The Garden Kitchen
Rental of the Green Valley Office

**Pima County supports us
financially through an annual
appropriation: \$226,400**



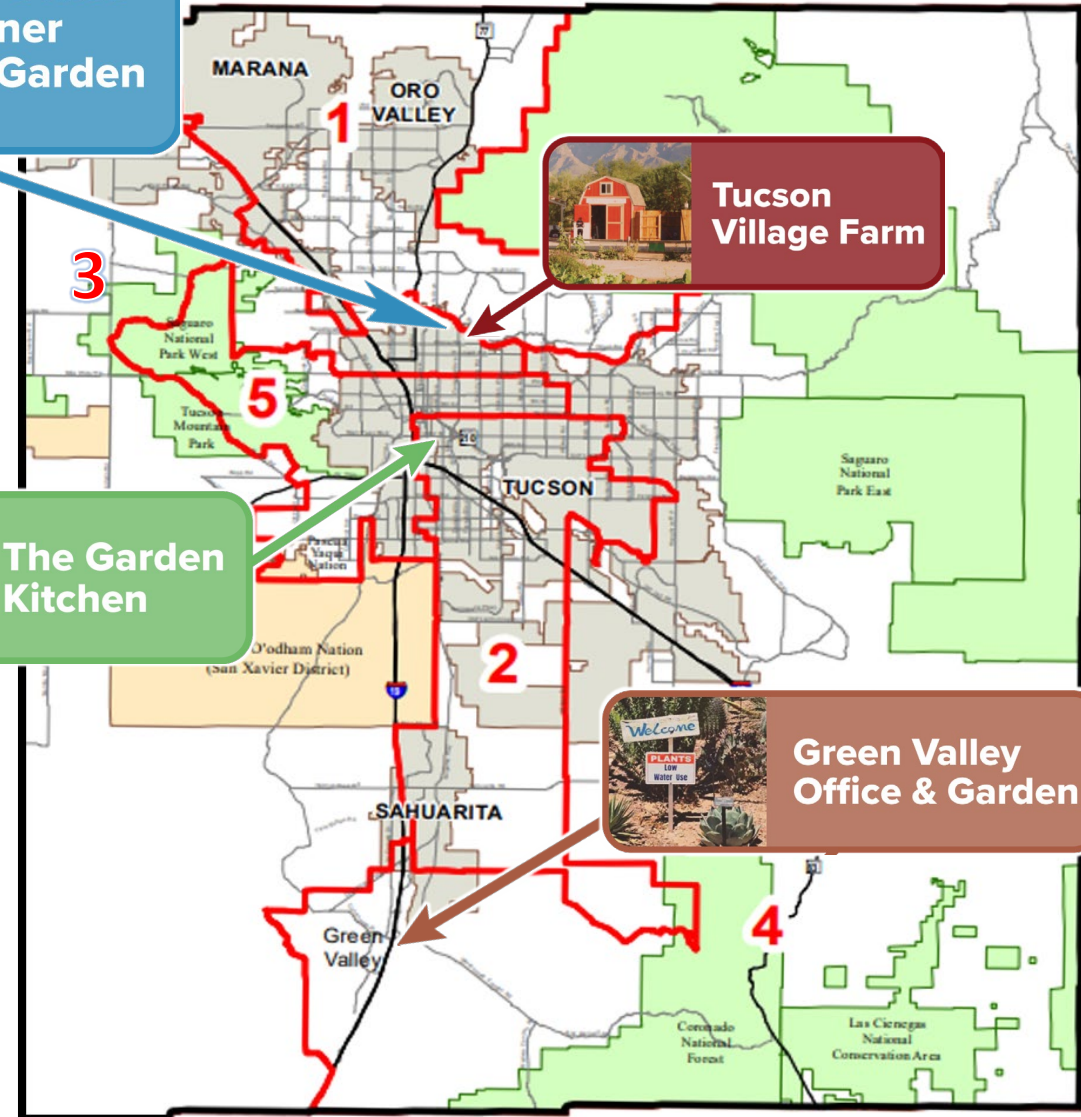
**The Garden
Kitchen**



**Tucson
Village Farm**

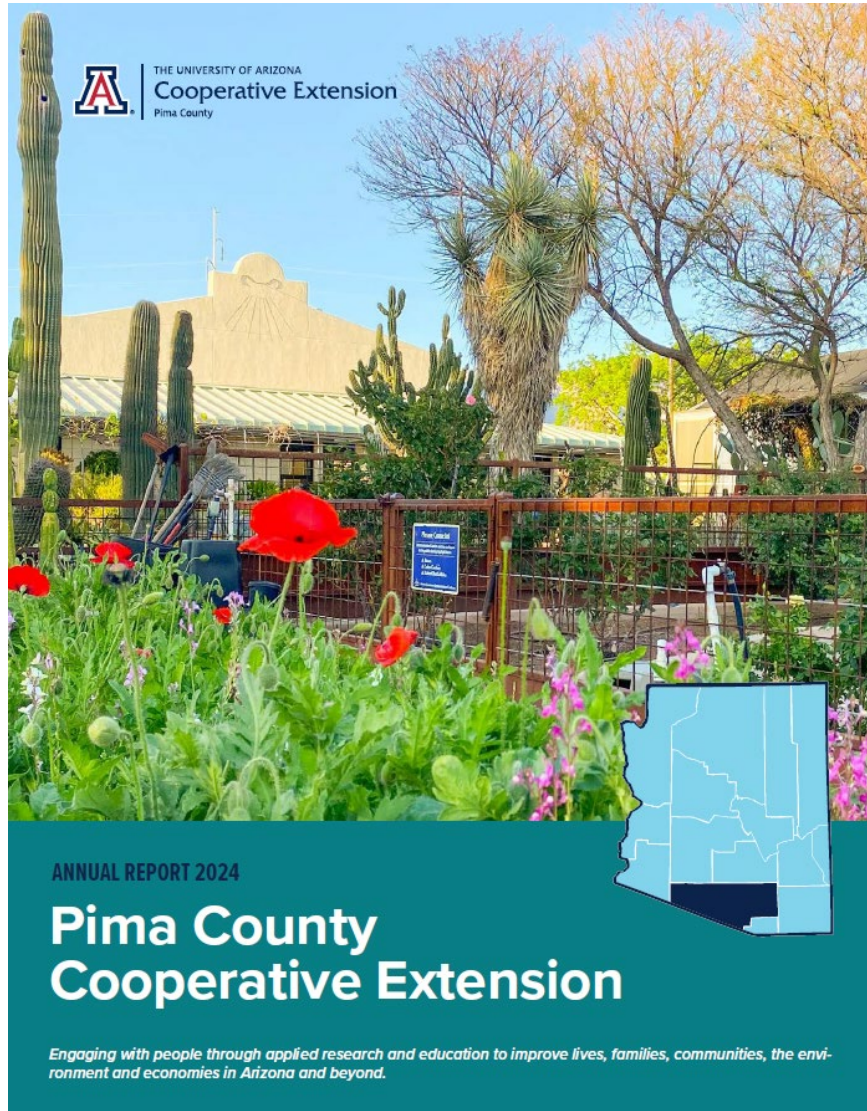


**Green Valley
Office & Garden**



Pima Extension Reporting on Successes

Annual Reports



Bi-monthly Newsletter

Circulation is 17,507, > 50% open rate



Quarterly Reports



To: Karen Simms, Range and Conservation Lands Division Manager
Brian Powell, Conservation Science, Compliance, and Education, Division Manager
Pima County Conservation & Land Resources

From: Jenn Parlin, Interim Director, Pima County Cooperative Extension

Subject: Pima Extension Report, Quarter 1 FY26, July-September 2025

Date: October 9, 2025

This quarterly report summarizes Pima County Cooperative Extension's (Pima Extension) accomplishments enabled through the University of Arizona Appropriations of County Funds for FY2026. It aligns with the Scope of Work developed in coordination with Pima County Conservation & Land Resources (CLR) and approved by the Pima County Board of Supervisors in August 2025. The University of Arizona Cooperative Extension provides outreach and education to improve land stewardship and community health through horticulture and agriculture, 4-H youth development, and Family and Consumer Health Sciences. Funding from Pima County enables Pima Extension to serve the community and provide practical information that helps people make their lives better.

Element 1. Pima Extension Groundskeeping and Office Operations

Pima Extension supports 39 FTE working in four locations to serve Pima County citizens. The main office is located at 4210 N Campbell Ave, Tucson, the 4-H Healthy Living Center, Tucson Village Farm is located at 2201 E. Roger Road, Tucson, the southern Pima County office is at the Green Valley Community Center, 530 E Whitehouse Canyon Rd, Green Valley, and The Garden Kitchen is in the City of South Tucson, 2205 S. 4th Ave. Pima Extension also has over 400 volunteers working on programs in Pima County.

- Groundskeeping and outdoor maintenance were conducted in areas surrounding the Pima Extension office buildings, provided by or rented from Pima County for Extension services.
- Office support, including a portion of utility costs, supplies, and equipment maintenance.
- Administrative staff support for Pima Extension operations, finances, and programs.
- Rent was paid for the Green Valley Community Center facility, which is used for Master Gardener and Health programming.

Pima Extension engaged with 57,000 in 2024

- Over 176,000 hours of education in 2024
- 43 staff and 1,500 volunteers
- Over 50,000 hours of Volunteer Service

Ag and Natural Resources



Health



4-H Youth Education



Master Gardeners | Invasive Species Mitigation

- 275 Master Gardener Volunteers – 34,000 hours of service
- 27,088 people reached: classes, events workshops, plant clinic
- Largest free botanical garden in Arizona + Green Valley gardens



Invasives Program*

- 33 presentations
 - 34 removal events
 - Reached 1,200 participants
- *PC funded**



Smartscape Program

Funded by COT Tucson Water to Provide Sustainable Landscaping Education

- Education for landscape professionals, with 311 participants in 2024
- 105 City of Tucson employees attended 1-day boot camps
- 485 residents educated in classes and at community events



Health | Nutrition | Parenting

The Garden Kitchen

- 3,500 people reached and offering a safe space to learn about nutrition and health located in South Tucson
- Collaborations– Over 65 community sites and partner organizations like community gardens and early childhood education centers
- PLAZA Mobile Market
1200 transactions w/ 4,000 lbs. of produce
40% sales with nutrition assistance
Benefits (SNAP, Double Up, and FMNP coupons)



Health | Nutrition | Activity | Parenting

Expanded Food & Nutrition Education Program

- 481 classes with 203 adults earning certificates
- 700 youth received education
- 52 community outreach events

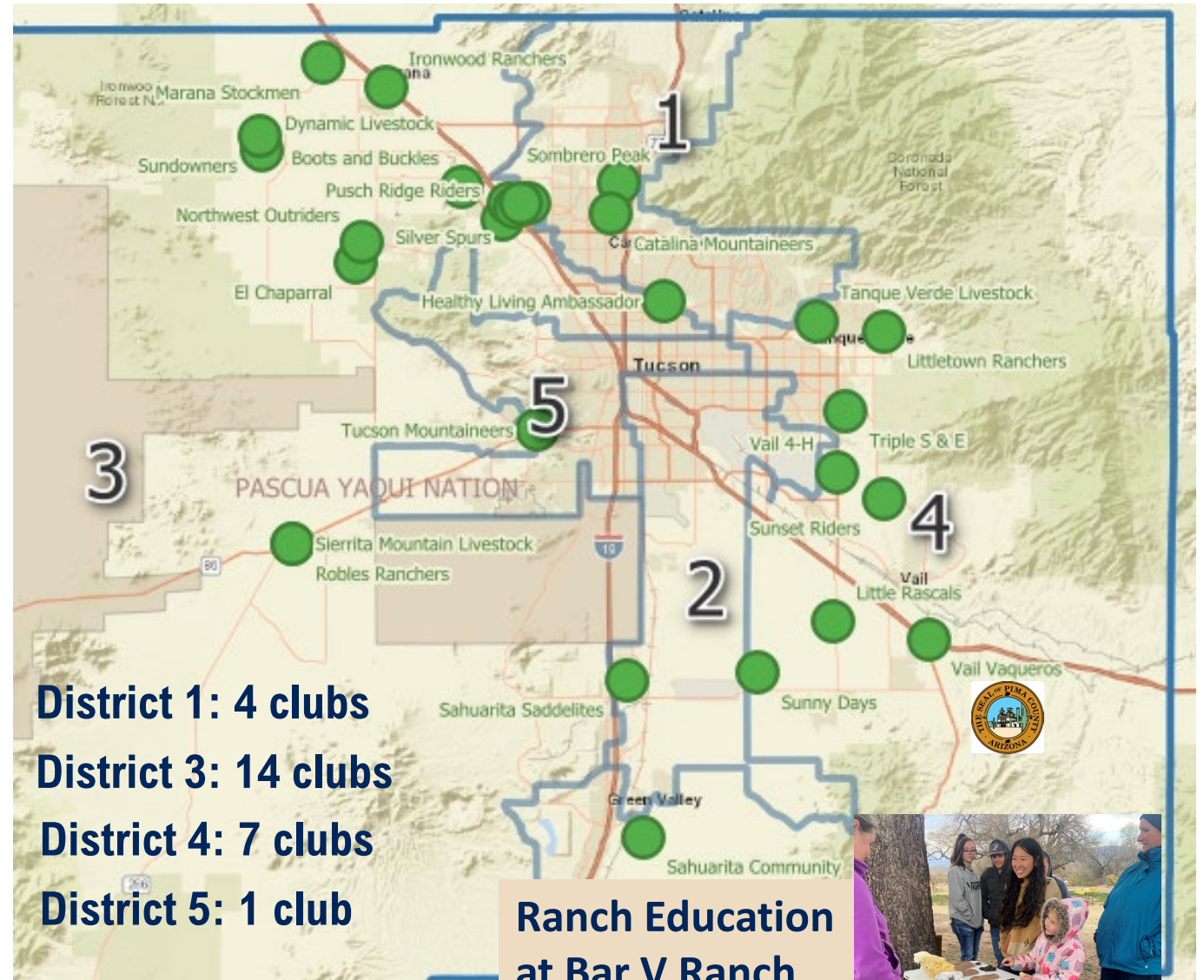
Family Engagement Program

- 344 free workshops to 479 caregivers
- 38% classes Arizona State Prison or Federal Corrections Institute.
- 771 participants in Financial Literacy



4-H Clubs in Pima County

- 643 Youth
- 34,000 hours of education
- Wide range of projects
- Culminating at the Pima County Fair



Tucson Village Farm

- 11,060 youth and 8,298 adult participants during 89,000 hours of programming
- 22 summer adventure camps
- Topics included: arts, outdoor activities, agriculture, nutrition, and health



2025 Wildfire Fuels Reduction Programming

- 110 Master Gardeners trained in defensible space and the importance of reducing fuel loads across diverse landscapes.
- Public education held during virtual Master Gardener class and at invasive species presentations and invasive species pulls.
- Developed Smartscape materials that emphasize wildfire risk reduction for landscaping professionals and at the first Urban & Suburban Weeds and Fire Risk class.
- Wildfire Outreach Coordinator hire in January. Duties will include working with partners to reduce wildfire fuels, promote wildfire-resistant ecology, and increase rural and urban wildfire preparedness.





THE UNIVERSITY OF ARIZONA

Cooperative Extension

Pima County

University of Arizona Cooperative Extension
College of Agriculture, Life & Environmental
Sciences & Cooperative Extension

Pima County Cooperative Extension

Your Pima County funding is critical!

- Operations support for our unit in a time of uncertainty
- Helping our region beat back invasive species
- Managing vegetation to reduce wildfire fuel loads in urban and rural Pima County





THE UNIVERSITY OF ARIZONA

Cooperative Extension

Pima County

University of Arizona Cooperative Extension
College of Agriculture, Life & Environmental
Sciences & Cooperative Extension

Thank you!

Jenn Parlin

Interim Director, Pima County Cooperative Extension,
University of Arizona

jparlin@arizona.edu | (520) 626-5161

*Research-based education to improve lives, families,
communities, the environment, and economies.*

