

NOTICE OF PUBLIC HEARING

PIMA COUNTY BOARD OF SUPERVISORS

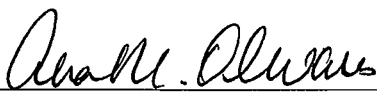
Notice is hereby given that the Pima County Board of Supervisors will hold a public hearing for the proposed Establishment of the 22nd Street IGA Improvement Project between Kino Parkway to Tucson Boulevard within portions of Sections 17, 18, 19 and 20, Township 14 South, Range 14 East, Gila and Salt River Meridian, Pima County, Arizona. MORE PARTICULARLY DESCRIBED AS FOLLOWS:

SEE EXHIBITS "A", "B-1" & "B-2"

The public hearing for the Establishment of this road under Proceeding Number 3034 will be held on Tuesday, September 7, 2021, at 9:00 a.m., or thereafter, located at the Pima County Administration Building, Board of Supervisors Hearing Room, 130 West Congress, 1st Floor, Tucson, Arizona.

A copy of the proposed Establishment for the aforementioned road can be obtained at the Pima County Department of Transportation, 201 North Stone Avenue, 4th floor or by calling (520) 724-6410.

Dated this 16th day of August, 2021



Ana M. Olivares, P.E., Director
Pima County Department of Transportation

Published: Daily Territorial
August 27, 2021 and September 3, 2021

RESOLUTION AND ORDER NO. 2021 -

A RESOLUTION AND ORDER OF THE BOARD OF SUPERVISORS OF PIMA COUNTY, ARIZONA, PROVIDING FOR THE ESTABLISHMENT OF A COUNTY HIGHWAY WITHIN THE INCORPORATED LIMITS OF THE CITY OF TUCSON FOR THE 22ND STREET IGA IMPROVEMENT PROJECT BETWEEN KINO PARKWAY AND TUCSON BOULEVARD, SITUATED WITHIN SECTIONS 17, 18, 19 AND 20, TOWNSHIP 14 SOUTH, RANGE 14 EAST, GILA AND SALT RIVER MERIDIAN, PIMA COUNTY, ARIZONA.

UNDER PROCEEDING NO. 3034

The Board of Supervisors of Pima County, Arizona finds:

1. The City of Tucson has requested that the Pima County Board of Supervisors establish a county highway, as more fully described in attached Exhibits "A", "B-1" and "B-2", within portions of Sections 17, 18, 19 and 20, Township 14 South, Range 14 East, Gila and Salt River Meridian, Pima County, Arizona, located within the incorporated limits of the City of Tucson for the 22nd Street IGA Improvement Project between Kino Parkway and Tucson Boulevard, excluding the portions within the ADOT right of way, and has submitted a petition to the Board for said purpose in accordance with Arizona Revised Statutes (A.R.S.) Section 28-6701(B).
2. The County Engineer filed a report and map of the proposed highway with the Board in accordance with A.R.S. § 28-6702(A)(1).
3. Said petition for establishment was set for a hearing before the Board on September 7, 2021, in accordance with A.R.S. § 28-6703.
4. Notice of the hearing was published once a week for two consecutive weeks in a newspaper of general circulation prior to the hearing.
5. At the hearing on the 7th day of September 2021, the Board considered the feasibility, advantages and necessity of the highway sought to be established, and determined the proposed highway to be a public necessity.

NOW, THEREFORE, BE IT RESOLVED THAT:

1. The Board hereby grants the petition filed by the City of Tucson for the establishment of a county highway within a portion of Sections 17, 18, 19 and 20, Township 14 South, Range 14 East, Gila and Salt River Meridian, Pima County, Arizona, as more fully described in attached Exhibits "A", "B-1" and "B-2".

2. The Board hereby establishes the public roadway described in the attached Exhibits "A", "B-1" and "B-2", as a county highway for the purposes of the 22nd Street IGA Improvement Project between Kino Parkway and Tucson Boulevard.
3. The Clerk of the Board is hereby directed to record this Resolution and Order, together with a map of said highway, as Establishment Proceedings No.3034 in the Office of the Pima County Recorder, Pima County, Arizona.
4. The appropriate County officers and employees are hereby authorized and directed to perform all acts necessary and desirable to give effect to this Resolution.

PASSED AND ADOPTED this ___ day of _____ 2021.

Chair, Board of Supervisors

ATTEST:

Clerk of the Board

APPROVED AS TO FORM:



Deputy County Attorney

PETITION FOR ESTABLISHMENT OF COUNTY HIGHWAY

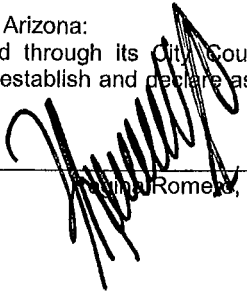
Board of Supervisors of Pima County, Arizona:

The City of Tucson, by and through its City Council, respectfully petitions that pursuant to A.R.S. § 28-6701(B) the Board of Supervisors establish and declare as a county highway the road described in the attached Exhibit A.

Attest:



City Clerk, Roger W. Randolph



Linda Romero, Mayor

Dated this 7th day of July 2021

EXHIBIT A

LEGAL DESCRIPTION

A portion of Sections 17, 18, 19 and 20, Township 14 South, Range 14 East, Gila and Salt River Meridian, Pima County, Arizona, described as follows:

COMMENCING at the southwest corner of said Section 17, monumented by a concrete nail in railroad tie from which the west one-quarter of said Section 17 bears N 00°45'24" W (basis of bearing) a distance of 2641.44 feet as monumented by a brass pin in casing;

THENCE upon the west line of the southwest one-quarter of said Section 17, N 00°45'24" W a distance of 549.43 feet to the northeasterly right-of-way of Barraza-Aviation Parkway (SR210) access control limits as recorded in ADOT Map Drawing No D-10-T-397;

THENCE upon said northeasterly right-of-way, N 54°27'33" W a distance of 1.58 feet to the **POINT OF BEGINNING**;

THENCE upon the project limits for 22nd Street - C.O.T. Job No. SR5A and Plan No. I-2010-012, all the following courses:

THENCE N 34°19'58" E a distance of 71.80 feet;

THENCE N 89°14'21" E a distance of 474.15 feet;

THENCE S 00°50'26" E a distance of 69.11 feet;

THENCE N 89°13'06" E a distance of 39.94 feet to a point on an arc of a non-tangent curve, concave northeasterly, a radial line of said curve through said point having a bearing of S 66°19'17" W;

THENCE southeasterly upon the arc of said curve, to the left, having a radius of 354.51 feet and a central angle of 07°14'26" for an arc length of 44.80 feet;

THENCE S 00°45'29" E a distance of 203.00 feet;

THENCE N 89°14'31" E a distance of 220.00 feet;

THENCE S 00°45'29" E a distance of 53.00 feet;

THENCE S 45°45'29" E a distance of 47.54 feet;

THENCE S 80°03'24" E a distance of 243.84 feet;

THENCE S 89°51'09" E a distance of 221.22 feet to the west right-of-way of Plumer Avenue as recorded in Docket 74, Page 285;

THENCE upon said west right-of-way, N 00°40'33" W a distance of 92.59 feet;

THENCE S 89°59'23" E a distance of 60.03 feet to the east right-of-way of Plumer Avenue;

THENCE upon said east right-of-way, S 00°40'33" E a distance of 77.03 feet to the north line of the 20-foot alley of Blocks 60-62 of Country Club Manor as recorded in Book 5 of Maps and Plats at Page 44;

THENCE upon said north line, N 89°23'57" E a distance of 1250.74 feet to the southeast corner of said Block 62, being common with the west right-of-way of Tucson Boulevard;

THENCE S 00°38'29" E a distance of 108.11 feet;

THENCE N 89°56'13" E a distance of 80.05 feet to the east right-of-way of Tucson Boulevard as recorded in C.O.T. Right-of-Way Plan No. R-66-001, lying on the arc of a non-tangent curve, concave northeasterly, a radial line of said curve through said point having a bearing of S 89°20'13" W;

THENCE upon said east right-of-way, southeasterly upon the arc of said curve, to the left, having a radius of 25.00 feet and a central angle of 89°29'00" for an arc length of 39.04 feet to the north right-of-way of 22ND Street;

THENCE S 00°07'38" W a distance of 145.01 feet;

THENCE S 88°50'14" W a distance of 69.49 feet;

THENCE S 00°53'24" E a distance of 84.47 feet;

THENCE S 89°35'22" W a distance of 22.92 feet to the south line of the 20-foot alley of Blocks D and C of Parkway Terrace as recorded in Book 5 of Maps and Plats at Page 78;

THENCE upon said south line, S 89°09'55" W a distance of 810.30 feet to the east right-of-way of Wilson Avenue as recorded in said Book 5 of Maps and Plats at Page 78;

THENCE upon said east right-of-way, S 00°51'10" E a distance of 124.84 feet;

THENCE S 36°03'21" W a distance of 128.58 feet to the southeasterly right-of-way of Wilson Avenue;

THENCE upon said southeasterly right-of-way, S 35°16'03" W a distance of 126.61 feet;

THENCE N 54°43'57" W a distance of 60.00 feet to the northwesterly right-of-way of Wilson Avenue;

THENCE upon said northwesterly right-of-way, N 35°16'03" E a distance of 126.61 feet;

THENCE N 25°53'49" E a distance of 75.55 feet;

THENCE N 89°09'43" E a distance of 31.68 feet to the west right-of-way of Wilson Avenue;

THENCE upon said west right-of-way, N 00°51'10" W a distance of 124.83 feet;

THENCE S 89°09'42" W a distance of 228.06 feet;

THENCE S 00°50'18" E a distance of 38.30 feet;

THENCE S 79°33'10" W a distance of 40.14 feet;

THENCE S 35°15'45" W a distance of 125.00 feet;

THENCE S 34°43'45" W a distance of 104.33 feet;

THENCE N 59°56'11" W a distance of 318.09 feet;

THENCE N 54°37'37" W a distance of 321.01 feet;

THENCE S 89°34'28" W a distance of 774.68 feet to the east right-of-way of Campbell Avenue;

THENCE upon said east right-of-way, S 01°01'58" E a distance of 182.55 feet;

THENCE N 88°58'02" E a distance of 247.13 feet;

THENCE S 01°01'58" E a distance of 80.70 feet;

THENCE S 88°59'53" W a distance of 327.15 feet to the west right-of-way of Campbell Avenue;

THENCE upon said west right-of-way, N 01°02'18" W a distance of 242.17 feet;

THENCE S 89°45'53" W a distance of 114.90 feet;

THENCE S 00°31'12" E a distance of 1.00 feet;

THENCE S 73°44'03" W a distance of 14.47 feet;

THENCE S 89°47'06" W a distance of 18.07 feet;

THENCE N 00°12'54" W a distance of 5.05 feet;

THENCE S 89°48'30" W a distance of 32.50 feet;

THENCE S 00°12'54" E a distance of 5.06 feet;

THENCE S 89°47'06" W a distance of 32.00 feet;

THENCE N 00°12'54" W a distance of 4.98 feet;

THENCE S 89°46'50" W a distance of 35.24 feet;

THENCE S 00°12'54" E a distance of 10.00 feet;

THENCE S 89°47'52" W a distance of 61.00 feet;

THENCE N 00°12'54" W a distance of 10.00 feet;

THENCE S 89°47'11" W a distance of 191.36 feet to a point on the arc of a non-tangent curve concave southeasterly, a radial line of said curve through said point having a bearing of N 01°24'20" W;

THENCE southwesterly upon the arc of said curve, to the left, having a radius of 25.00 feet and a central angle of 88°07'58" for an arc length of 38.46 feet to the east right-of-way of Neff Street;

THENCE upon said east right-of-way, S 00°48'55" E a distance of 28.73 feet;

THENCE S 89°01'45" W a distance of 49.98 feet to the west right-of-way of Neff Street;

THENCE upon said west right-of-way, N 00°48'39" W a distance of 14.52 feet to a point of curvature of a tangent curve concave southwesterly;

THENCE northwesterly upon the arc of said curve, to the left, having a radius of 40.00 feet and a central angle of 73°48'14" for an arc length of 51.52 feet;

THENCE N 90°00'00" W a distance of 56.97 feet;

THENCE S 00°13'25" E a distance of 8.75 feet;

THENCE S 89°46'35" W a distance of 67.30 feet;

THENCE S 00°25'03" W a distance of 12.60 feet;

THENCE N 89°20'35" W a distance of 50.00 feet;

THENCE N 00°53'46" E a distance of 11.82 feet to the south right-of-way of 22ND Street;

THENCE upon said south right-of-way, S 89°45'57" W a distance of 232.09 feet;

THENCE continue upon said south right-of-way, N 00°14'40" W a distance of 10.00 feet;

THENCE continue upon said south right-of-way, S 89°46'06" W a distance of 153.75 feet;

THENCE N 00°50'23" W a distance of 155.38 feet to the north right-of-way of 22ND Street;

THENCE upon said north right-of-way, N 89°09'37" E a distance of 72.18 feet;

THENCE N 00°26'29" W a distance of 7.96 feet;

THENCE N 89°04'47" E a distance of 91.90 feet;

THENCE S 00°53'11" E a distance of 19.42 feet;

THENCE N 89°06'11" E a distance of 32.32 feet;

THENCE N 00°53'49" W a distance of 1.04 feet;

THENCE N 89°05'36" E a distance of 120.71 feet;

THENCE N 00°20'08" W a distance of 15.00 feet;

THENCE N 89°20'12" E a distance of 1.01 feet to the west right-of-way of Warren Avenue;

THENCE upon said west right-of-way, N 00°45'30" W a distance of 356.84 feet;

THENCE N 89°31'58" E a distance of 85.24 feet;

THENCE S 22°47'42" W a distance of 12.62 feet;

THENCE S 00°12'37" E a distance of 31.92 feet to the east right-of-way of Warren Avenue;

THENCE upon said east right-of-way, S 00°45'13" E a distance of 282.24 feet;

THENCE N 89°07'04" E a distance of 506.30 feet;

THENCE N 35°16'12" E a distance of 35.08 feet;

THENCE N 34°19'58" E a distance of 497.20 feet to the POINT OF BEGINNING.

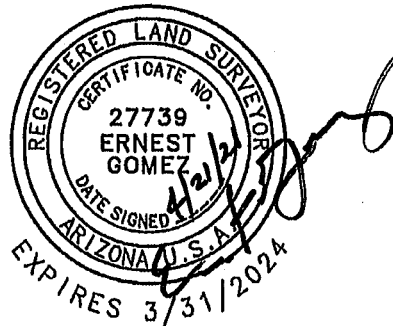
EXCLUDING Barraza Aviation Parkway (SR 210) ADOT access control limits as recorded in Docket 11721, Page 54, records of Pima County, Arizona and shown in ADOT Map Drawing No. D-10-T-397.

Total 22ND Street Project Limits, Excluding ADOT access control limits contains an area of 27.65 acres, more or less.

See Exhibits B-1 & B-2 attached hereto and made a part hereof.

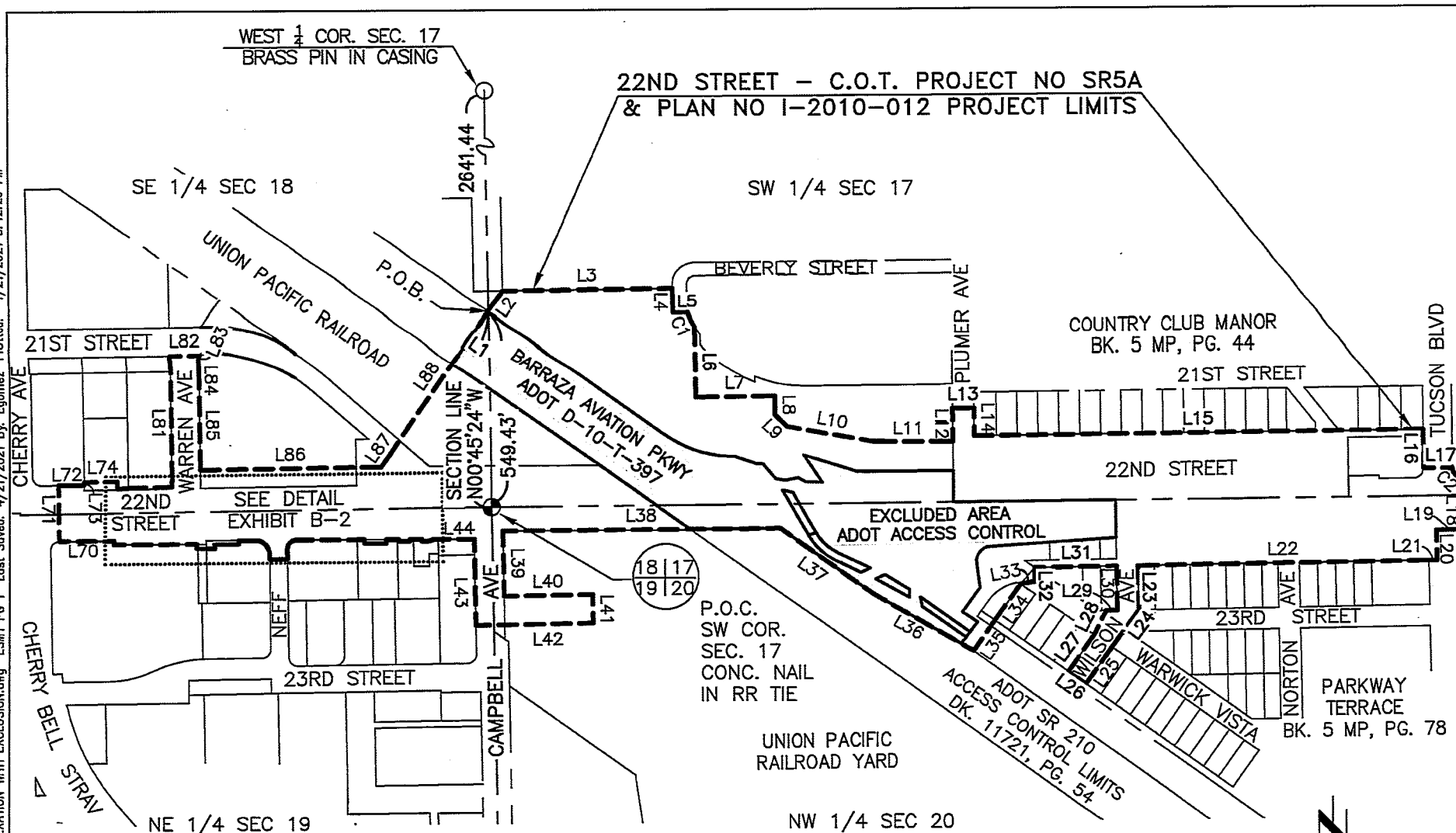
Prepared By:
Psomas

April 21, 2021
Project No.7AEC090101

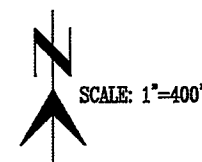


Ernest Gomez, AZ. R.L.S. 27739

J:\AEC\00101\SURVEY\LEGALS\22ND DE-ANNEXATION WITH EXCLUSION.dwg ESMT PG 1 Last Saved: 4/21/2021 By: Egonmez Plotted: 4/21/2021 3:42:26 PM



SEE DETAIL AND LINE-CURVE TABLES ON EXHIBIT B-2



SEC 17, 18, 19 & 20, T14S, R14E

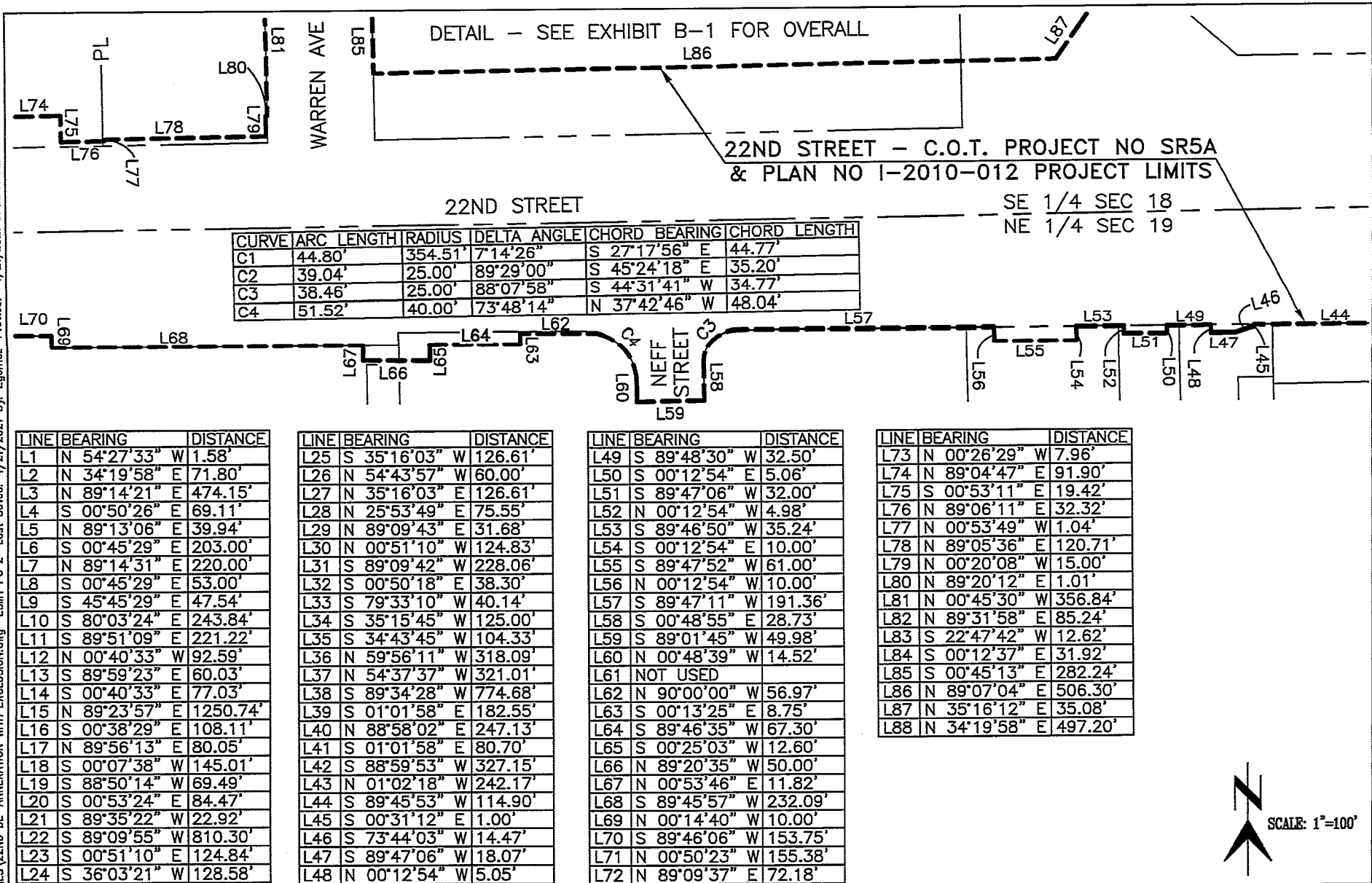
Drawn: APRIL 21, 2021

Scale: 1"=400'

22ND STREET PROJECT LIMITS
EXCLUDING AREA WITHIN ADOT ACCESS CONTROL
LIMITS SHOWN IN ADOT DRAWING NO. D-10-T-397,
BEING A PORTION OF SECTIONS 17, 18, 19 & 20,
T-14-S, R-14-E, GILA & SALT RIVER MERIDIAN,
PIMA COUNTY, ARIZONA, CITY OF TUCSON

City of Tucson, Arizona
ENGINEERING DIVISION 1/8

EXHIBIT B-1



Drawn: APRIL 21, 2021

Scale: 1"=100'

22ND STREET PROJECT LIMITS
A PORTION OF SECTIONS 17, 18, 19 & 20,
T-14-S, R-14-E, GILA & SALT RIVER MERIDIAN,
PIMA COUNTY, ARIZONA, CITY OF TUCSON

City of Tucson, Arizona
ENGINEERING DIVISION (8/8)

EXHIBIT B-2