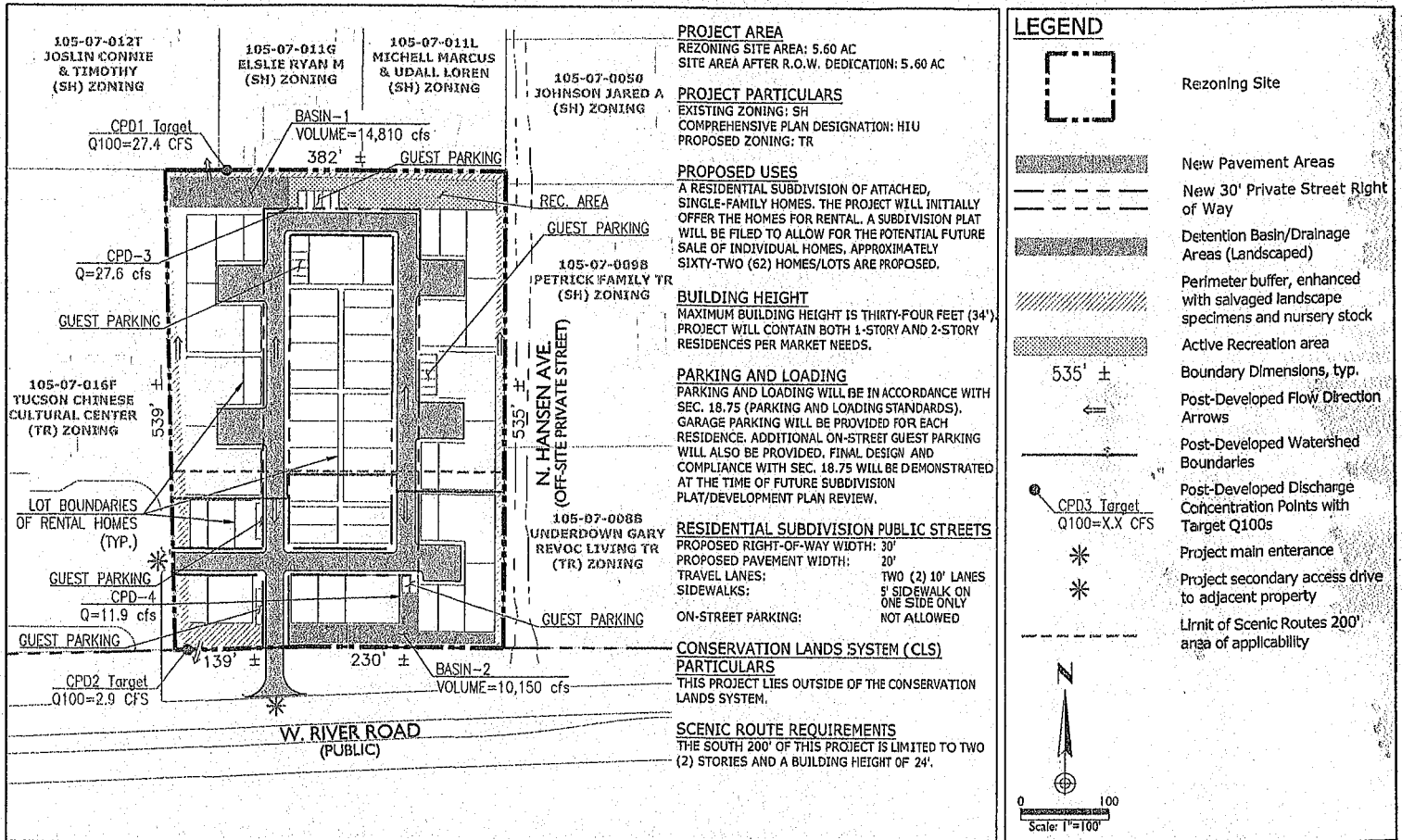


# AGENDA MATERIAL

DATE 7-6-21 ITEM NO. PA22



**RED POINT DEVELOPMENT**  
4.62 ACRE PARCEL @ NW CORNER OF W. RIVER RD. & N. HANSEN AVE.  
(OWNERSHIP: PINETREE PROPERTIES)  
REZONING: SH TO TR

**EXHIBIT II-B.1**  
PRELIMINARY DEVELOPMENT PLAN  
PAGE 34

JUL 06 21 PM 10:00 FC CLK OF BD

AP3

