



## BOARD OF SUPERVISORS AGENDA ITEM REPORT

Requested Board Meeting Date: June 22, 2021

**Title:** Electric Easement to Tucson Electric Power ("TEP")

### Introduction/Background:

TEP has requested an easement across Pima County property located in the Century Park Research Center, lying within Section 18, Township 15, Range 15 G&SRM, Pima County, Arizona, as shown on the attached Location Map. File # E-0234

### Discussion:

TEP has determined the easement is needed to construct a 138 kV electric transmission line to support existing distribution substations for the Irvington Road to East Loop Transmission Line Project.

### Conclusion:

This request has been reviewed by appropriate County staff and they agree to granting the easement.

### Recommendation:

Staff recommends that the Pima County Board of Supervisors approve the Easement by unanimous consent to avoid auctioning the Easement. Upon approval, staff will record the necessary conveyance document.

### Fiscal Impact:

Pima County received \$1,200.00 in revenue based upon an appraisal of the easement.

Attachment: Location Map

### Board of Supervisor District:

☐ 1      ☐ 2      ☐ 3      ☒ 4      ☐ 5      ☐ All

Department: Real Property Services

Telephone: 724-6311

Contact: Tim Murphy

Telephone: 724-6379

Department Director Signature/Date:

Tim Murphy 5/24/2021

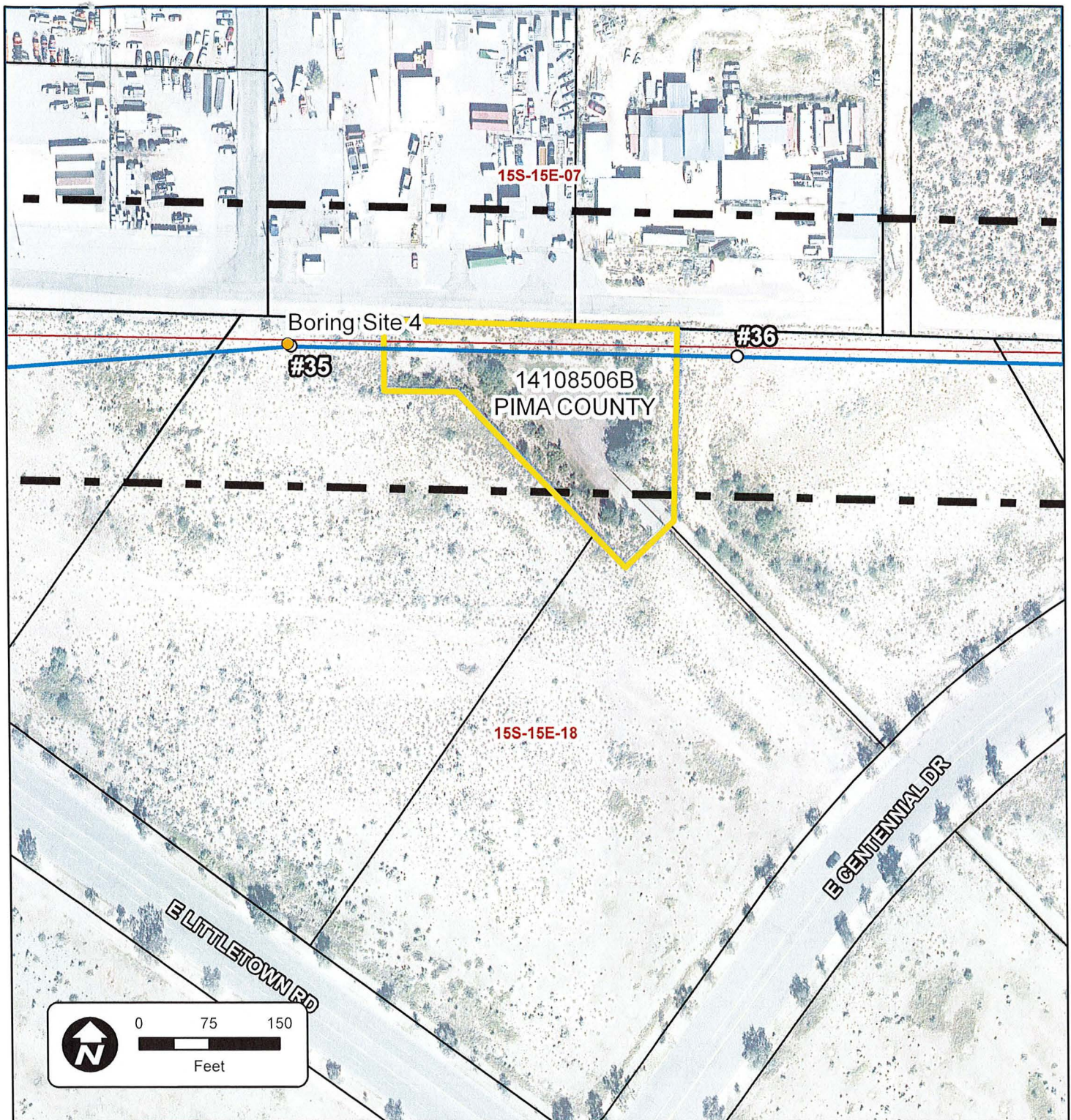
Deputy County Administrator Signature/Date:

C. R. DeLuca 5/24/2021

County Administrator Signature/Date:

C. R. DeLuca 5/26/21





## Irvington to East Loop 138 kV Transmission Line Project

### Exhibit A - Parcel 14108506B

- Boring Locations
- Preliminary Transmission Poles
- Preliminary Transmission Centerline
- CEC Approved Corridor
- Subject Parcel
- Parcels
- Township - Range - Section

**TEP**  
Tucson Electric Power  
Land Resources

Sources: Esri, UNS, TEP, BLM,  
and Pima County GIS.  
Projection: NAD 1983 UTM Zone 12N  
Basemap: PAG Imagery 2019

This map is for planning purposes only. TEP and  
UNS Energy make no warranty of its accuracy.