

6625 north Sandario road Tucson

Web Map As Submitted By User



- ☐ Project Boundary
- ☐ Buffered Project Boundary

Project Size (acres): 1.95

Lat/Long (DD): 32.3249 / -111.2186

County(s): Pima

AGFD Region(s): Tucson

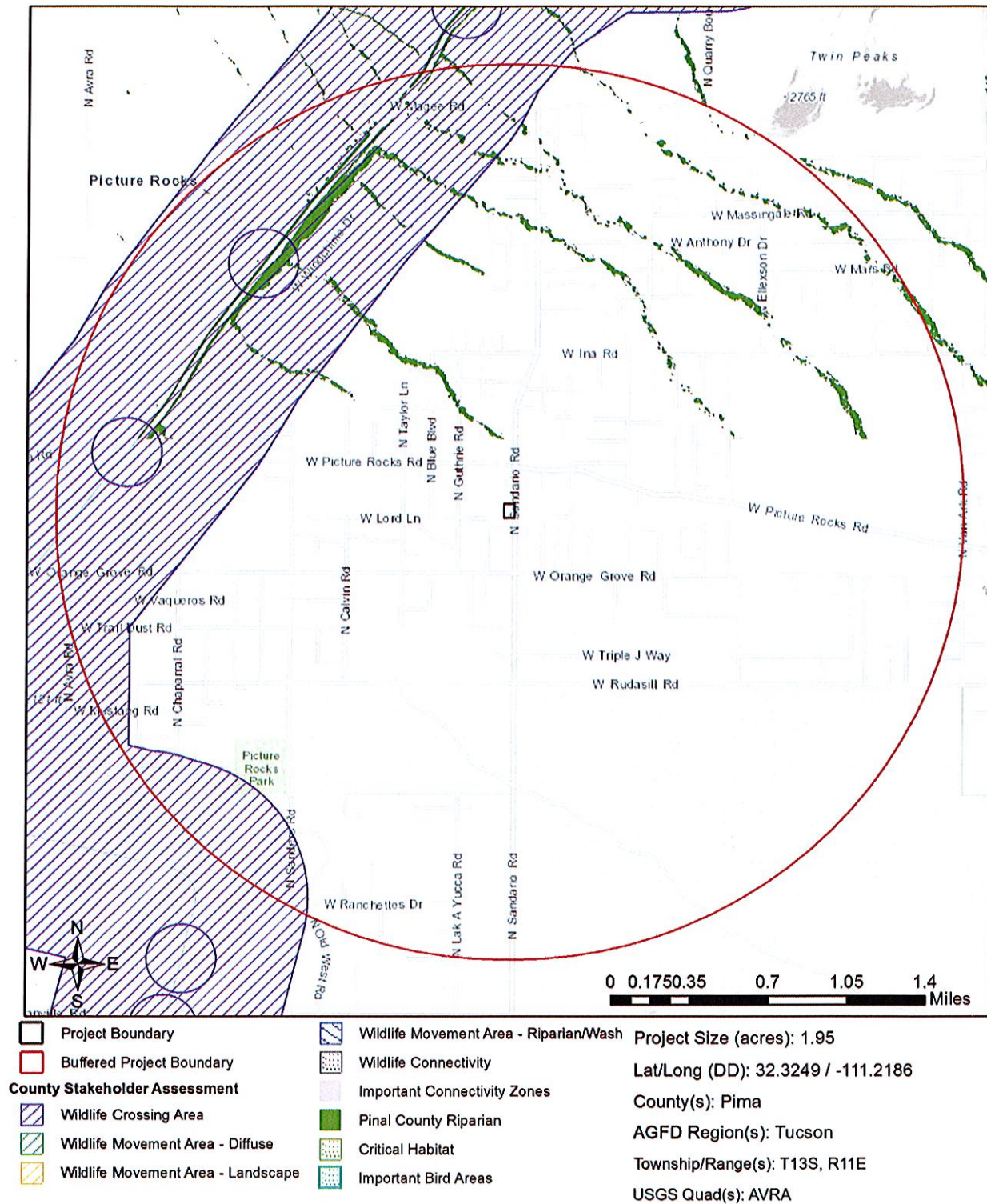
Township/Range(s): T13S, R11E

USGS Quad(s): AVRA

Source: Esri, DigitalGlobe, GeoEye, Earthstar Geographics, CNES/Airbus DS, USDA, USGS, AeroGRID, IGN, and the GIS User Community

6625 north Sandario road Tucson

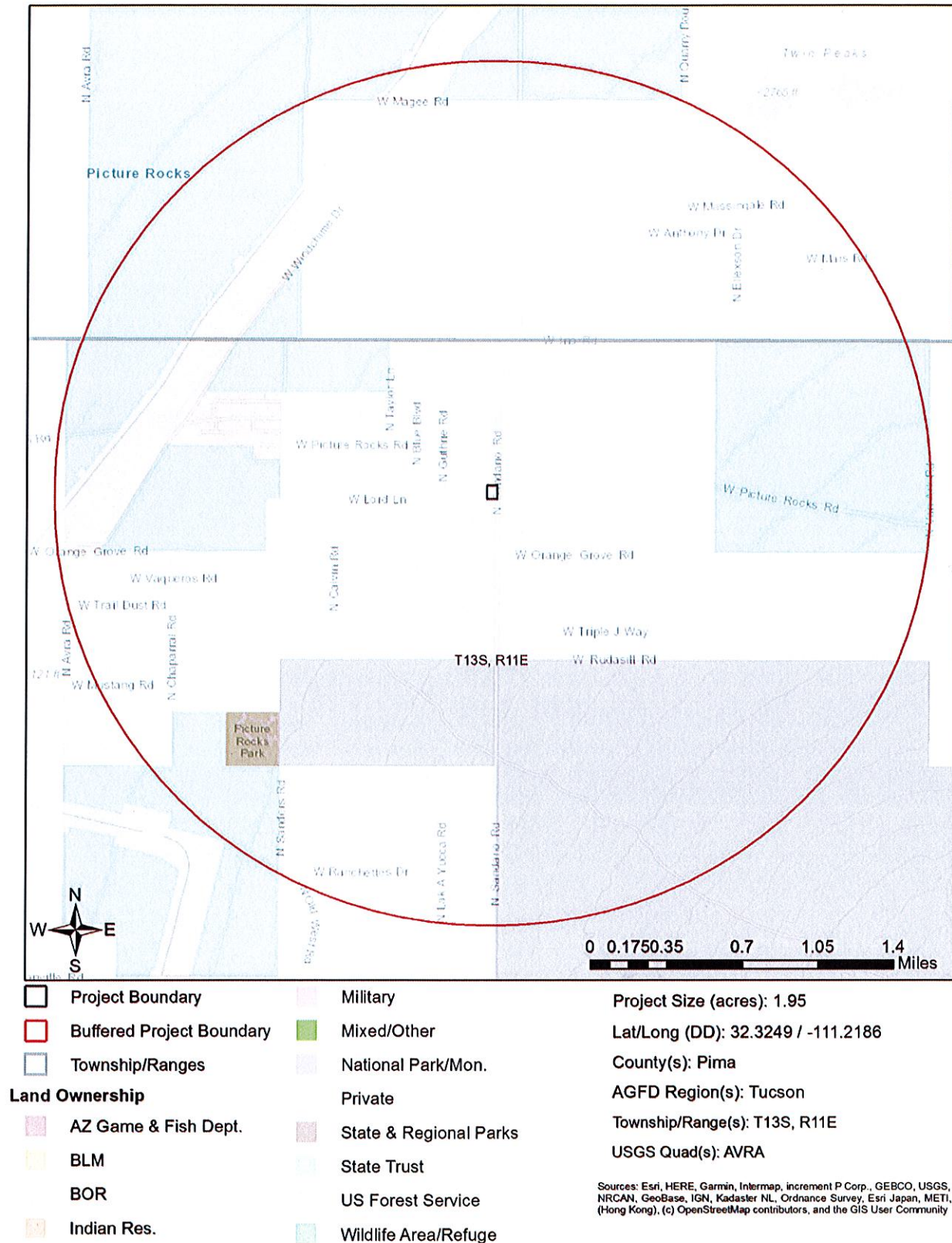
Important Areas



Sources: Esri, HERE, Garmin, Intermap, increment P Corp., GEBCO, USGS, FAO, NPS, NRCAN, GeoBase, IGN, Kadaster NL, Ordnance Survey, Esri Japan, METI, Esri China (Hong Kong), (c) OpenStreetMap contributors, and the GIS User Community

6625 north Sandario road Tucson

Township/Ranges and Land Ownership



Special Status Species Documented within 2 Miles of Project Vicinity

Scientific Name	Common Name	FWS	USFS	BLM	NPL	SGCN
Heloderma suspectum suspectum	Reticulate Gila Monster					1A
Leptonycteris yerbabuenae	Lesser Long-nosed Bat	SC				1A
Mammillaria thornberi	Thornber Fishhook Cactus				SR	
Peniocereus greggii var. transmontanus	Desert Night-blooming Cereus				SR	
Terrapene ornata luteola	Desert Box Turtle			S		1A
Tumamoca macedougali	Tumamoc Globeberry		S	S	SR	

Note: Status code definitions can be found at <https://www.azgfd.com/wildlife/planning/wildlifeguidelines/statusdefinitions/>

No Special Areas Detected

No special areas were detected within the project vicinity.

Species of Greatest Conservation Need Predicted within the Project Vicinity based on Predicted Range Models

Scientific Name	Common Name	FWS	USFS	BLM	NPL	SGCN
Aix sponsa	Wood Duck					1B
Ammospermophilus harrisi	Harris' Antelope Squirrel					1B
Anaxyrus retiformis	Sonoran Green Toad			S		1B
Athene cunicularia hypugaea	Western Burrowing Owl	SC	S	S		1B
Calypte costae	Costa's Hummingbird					1C
Chilomeniscus stramineus	Variable Sandsnake					1B
Colaptes chrysoides	Gilded Flicker			S		1B
Coluber bilineatus	Sonoran Whipsnake					1B
Corynorhinus townsendii pallescens	Pale Townsend's Big-eared Bat	SC	S	S		1B
Crotalus tigris	Tiger Rattlesnake					1B
Crotaphytus nebrius	Sonoran Collared Lizard					1B
Dipodomys spectabilis	Banner-tailed Kangaroo Rat			S		1B
Euderma maculatum	Spotted Bat	SC	S	S		1B
Eumops perotis californicus	Greater Western Bonneted Bat	SC		S		1B
Glaucidium brasilianum cactorum	Cactus Ferruginous Pygmy-owl	SC	S	S		1B
Gopherus morafkai	Sonoran Desert Tortoise	CCA	S	S		1A
Haliaeetus leucocephalus	Bald Eagle	SC, BGA	S	S		1A
Heloderma suspectum	Gila Monster					1A
Incilius alvarius	Sonoran Desert Toad					1B
Lasiurus xanthinus	Western Yellow Bat		S			1B
Leptonycteris yerbabuenae	Lesser Long-nosed Bat	SC				1A
Lepus alleni	Antelope Jackrabbit					1B
Macrotus californicus	California Leaf-nosed Bat	SC		S		1B
Melanerpes uropygialis	Gila Woodpecker					1B

Species of Greatest Conservation Need Predicted within the Project Vicinity based on Predicted Range Models

Scientific Name	Common Name	FWS	USFS	BLM	NPL	SGCN
Melospiza lincolnii	Lincoln's Sparrow					1B
Melospiza aberti	Abert's Towhee		S			1B
Micrathene whitneyi	Elf Owl					1C
Micruroides euryxanthus	Sonoran Coralsnake					1B
Myiarchus tyrannulus	Brown-crested Flycatcher					1C
Myotis velifer	Cave Myotis	SC		S		1B
Myotis yumanensis	Yuma Myotis	SC				1B
Nyctinomops femorosaccus	Pocketed Free-tailed Bat					1B
Oreoscoptes montanus	Sage Thrasher					1C
Oreothlypis luciae	Lucy's Warbler					1C
Peucaea carpalis	Rufous-winged Sparrow					1B
Phrynosoma solare	Regal Horned Lizard					1B
Phyllorhynchus browni	Saddled Leaf-nosed Snake					1B
Progne subis hesperia	Desert Purple Martin			S		1B
Setophaga petechia	Yellow Warbler					1B
Spizella breweri	Brewer's Sparrow					1C
Tadarida brasiliensis	Brazilian Free-tailed Bat					1B
Toxostoma lecontei	LeConte's Thrasher			S		1B
Vireo bellii arizonae	Arizona Bell's Vireo					1B
Vulpes macrotis	Kit Fox	No Status				1B

Species of Economic and Recreation Importance Predicted within the Project Vicinity

Scientific Name	Common Name	FWS	USFS	BLM	NPL	SGCN
Callipepla gambelii	Gambel's Quail					
Odocoileus hemionus	Mule Deer					
Pecari tajacu	Javelina					
Puma concolor	Mountain Lion					
Zenaidura macroura	White-winged Dove					
Zenaidura macroura	Mourning Dove					

Project Type: Development Within Municipalities (Urban Growth), Residential single dwelling and associated infrastructure, Maintenance/expansion/rehabilitation of existing facilities

Project Type Recommendations:

Consider impacts of outdoor lighting on wildlife and develop measures or alternatives that can be taken to increase human safety while minimizing potential impacts to wildlife. Conduct wildlife surveys to determine species within project area, and evaluate proposed activities based on species biology and natural history to determine if artificial lighting may disrupt behavior patterns or habitat use. Use only the minimum amount of light needed for safety. Narrow spectrum bulbs should be used as often as possible to lower the range of species affected by lighting. All lighting should be shielded, canted, or cut to ensure that light reaches only areas needing illumination.

Minimize potential introduction or spread of exotic invasive species. Invasive species can be plants, animals (exotic snails), and other organisms (e.g., microbes), which may cause alteration to ecological functions or compete with or prey upon native species and can cause social impacts (e.g., livestock forage reduction, increase wildfire risk). The terms noxious weed or invasive plants are often used interchangeably. Precautions should be taken to wash all equipment utilized in the project activities before leaving the site. Arizona has noxious weed regulations (Arizona Revised Statutes, Rules R3-4-244 and R3-4-245). See Arizona Department of Agriculture website for restricted plants, <https://agriculture.az.gov/>. Additionally, the U.S. Department of Agriculture has information regarding pest and invasive plant control methods including: pesticide, herbicide, biological control agents, and mechanical control, <http://www.usda.gov/wps/portal/usdahome>. The Department regulates the importation, purchasing, and transportation of wildlife and fish (Restricted Live Wildlife), please refer to the hunting regulations for further information <https://www.azgfd.com/hunting/regulations>.

Trenches should be covered or back-filled as soon as possible. Incorporate escape ramps in ditches or fencing along the perimeter to deter small mammals and herptefaua (snakes, lizards, tortoise) from entering ditches.

Project Location and/or Species Recommendations:

HDMS records indicate that **one or more native plants listed on the Arizona Native Plant Law and Antiquities Act** have been documented within the vicinity of your project area. Please contact:

Arizona Department of Agriculture

1688 W Adams St.

Phoenix, AZ 85007

Phone: 602.542.4373

<https://agriculture.az.gov/sites/default/files/Native%20Plant%20Rules%20-%20AZ%20Dept%20of%20Ag.pdf> starts on page 44

F. SOILS:

3. Soils testing were not performed on this lot.
2. Not application.

G. TRAFFIC:

4. Existing Offsite Streets:

The Subject Property is located Sandario Road.
There are no onsite or offsite roads as part of this development.

The property proposed for rezoning is served by Sandario Road and is a paved, Pima County maintained, without curb or median, 2-lane arterial with an existing & future right of way of 150 feet it is designated a major Route per the Major Streets and Scenic Routes Plan. The most recent traffic counts for Sandario Road between Rudasill and Picture Rocks Roads are (Dec-14) 4356 at 6385N and (Sep-11) 6128 at 6775N

"See Exhibit I.G.1 – Major Streets & Routes"

H. SEWERS:

There are no public sewers. The site is served by an existing septic system and no new waste fixture loads are proposed

I. SCHOOLS:

Not applicable.

J. RECREATION & TRAILS:

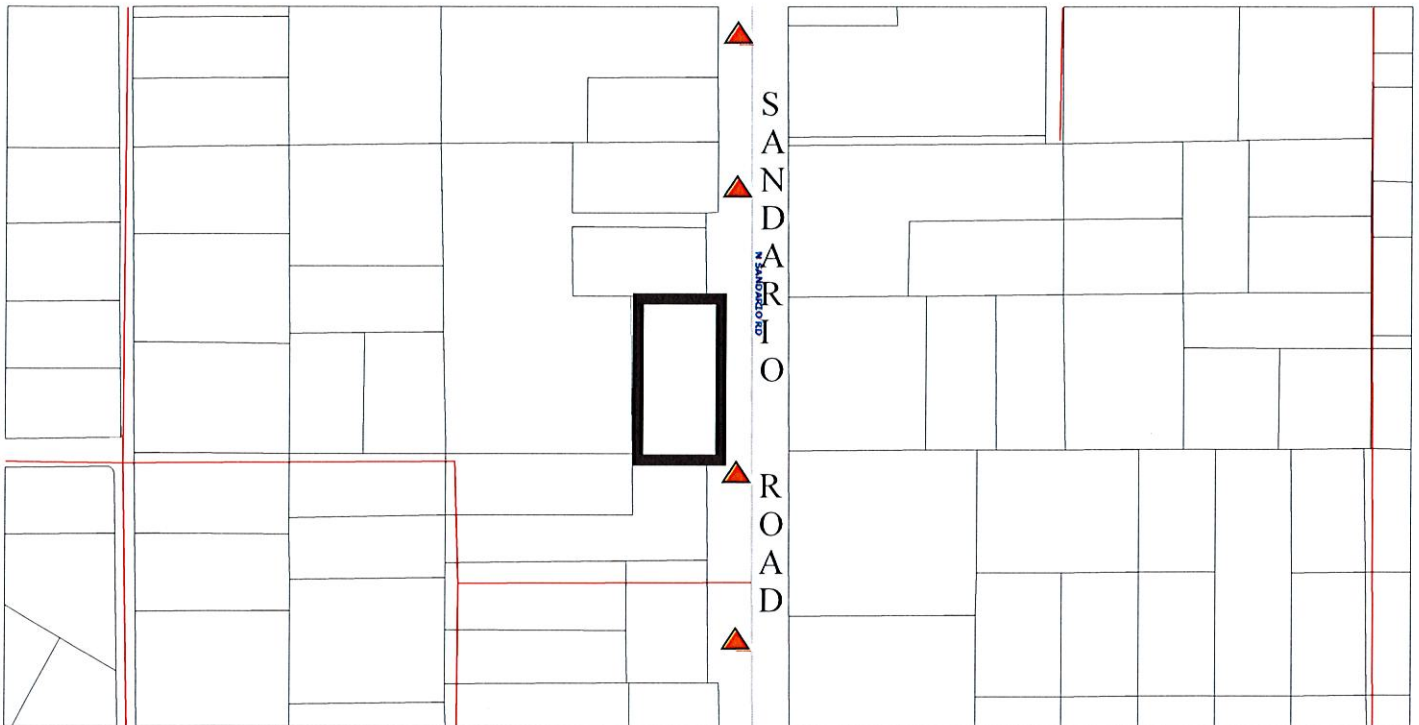
1. Existing and Proposed Trails & Recreation Facilities:

There are no parks or trails within 1 mile radius of the project.




"Exhibit I.J.1.a. Eastern Pima County Parks and Recreation Map".

*"Exhibit I.J.1.b. Eastern Pima County Parks and Recreation Map
CLOSE UP".*




Exhibit: I.G.1 Major Streets and Routes



Bicycle Route Legend

-  Residential Street
-  Experienced Riders
-  Bike Route With Striped Shoulder

Major Streets & Routes Legend

-  Major Scenic Route
-  Major Route
-  Rezone Parcel

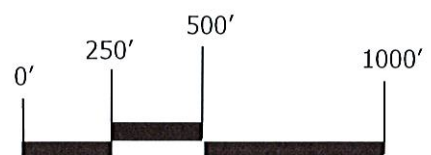
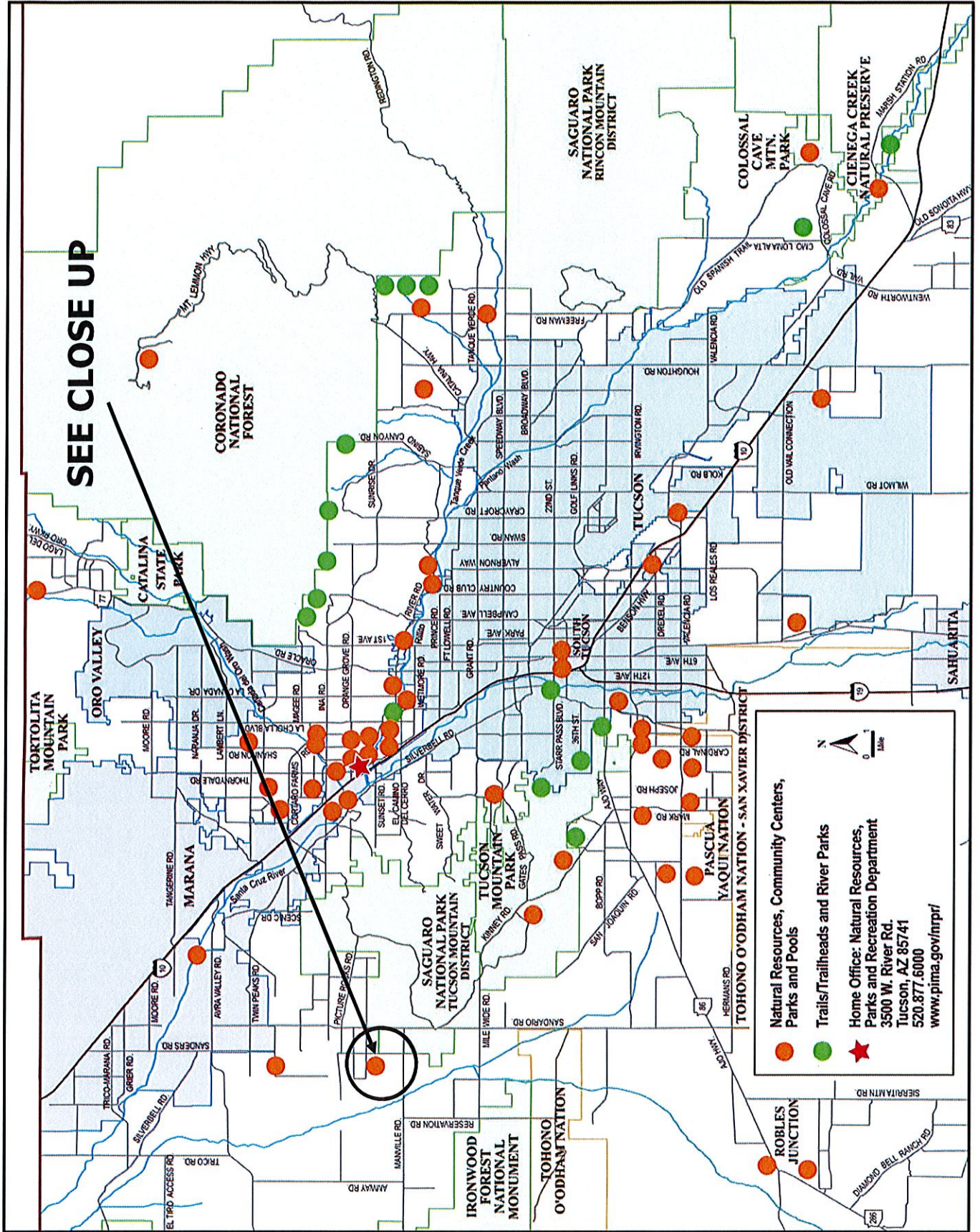


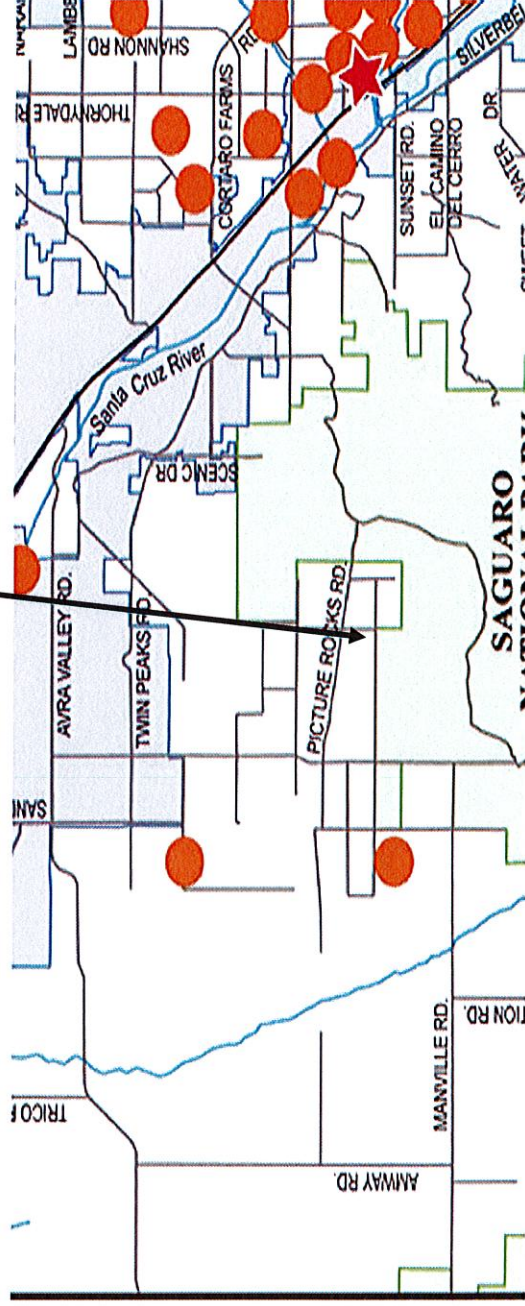
EXHIBIT I.K.1a: EASTERN PIMA COUNTY PARK AND RECREATION MAP



6625 N Sandario Road

EXHIBIT I.J.1b: CLOSE UP of PARK AND RECREATION MAP

SUBJECT PROPERTY

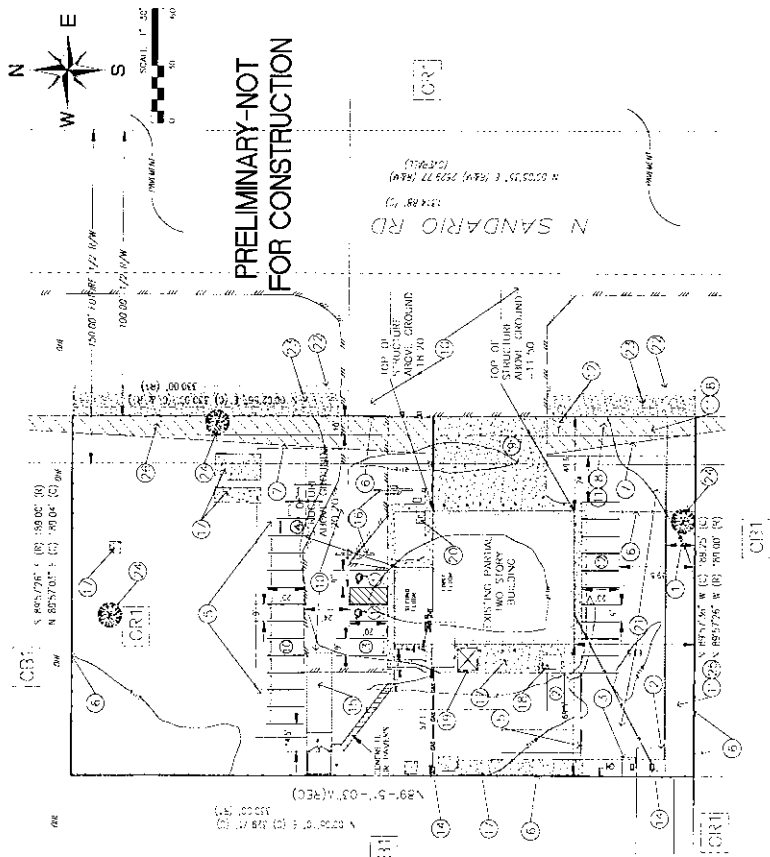


(1) 5' UTILITY LASE MIN, DOCK 7 FAC 90;
(2) 5' X 40' ELECTRIC LASE MIN, DOCK 1 9504 FAC 1742

- ① 5' JUTTER LASHWIN, DOCKE I JAK7 PAGL 90D
 ② 20'40"50 ETCING LASHWIN, DOCKE I 9055 PAG 1742
 ③ 20'40"50 LASHWIN, DOCKE I 750/ PAGL 903 W/O OF
 THE 512500 OF THE 1742
 ④ 20'40"50 CONCR I 20'40"50 LASHWIN
 ⑤ 20'40"50 CONCR I 20'40"50 LASHWIN
 ⑥ 20'40"50 CONCR I 20'40"50 LASHWIN
 ⑦ 20'40"50 CONCR I 20'40"50 LASHWIN
 ⑧ 20'40"50 CONCR I 20'40"50 LASHWIN
 ⑨ 20'40"50 CONCR I 20'40"50 LASHWIN
 ⑩ 20'40"50 CONCR I 20'40"50 LASHWIN
 ⑪ 20'40"50 CONCR I 20'40"50 LASHWIN
 ⑫ 20'40"50 CONCR I 20'40"50 LASHWIN
 ⑬ 20'40"50 CONCR I 20'40"50 LASHWIN
 ⑭ 20'40"50 CONCR I 20'40"50 LASHWIN
 ⑮ 20'40"50 CONCR I 20'40"50 LASHWIN
 ⑯ 20'40"50 CONCR I 20'40"50 LASHWIN
 ⑰ 20'40"50 CONCR I 20'40"50 LASHWIN
 ⑱ 20'40"50 CONCR I 20'40"50 LASHWIN
 ⑲ 20'40"50 CONCR I 20'40"50 LASHWIN
 ⑳ 20'40"50 CONCR I 20'40"50 LASHWIN
 ㉑ 20'40"50 CONCR I 20'40"50 LASHWIN
 ㉒ 20'40"50 CONCR I 20'40"50 LASHWIN
 ㉓ 20'40"50 CONCR I 20'40"50 LASHWIN
 ㉔ 20'40"50 CONCR I 20'40"50 LASHWIN
 ㉕ 20'40"50 CONCR I 20'40"50 LASHWIN
 ㉖ 20'40"50 CONCR I 20'40"50 LASHWIN
 ㉗ 20'40"50 CONCR I 20'40"50 LASHWIN
 ㉘ 20'40"50 CONCR I 20'40"50 LASHWIN
 ㉙ 20'40"50 CONCR I 20'40"50 LASHWIN
 ㉚ 20'40"50 CONCR I 20'40"50 LASHWIN
 ㉛ 20'40"50 CONCR I 20'40"50 LASHWIN
 ㉜ 20'40"50 CONCR I 20'40"50 LASHWIN
 ㉝ 20'40"50 CONCR I 20'40"50 LASHWIN
 ㉞ 20'40"50 CONCR I 20'40"50 LASHWIN
 ㉟ 20'40"50 CONCR I 20'40"50 LASHWIN
 ㊱ 20'40"50 CONCR I 20'40"50 LASHWIN
 ㊲ 20'40"50 CONCR I 20'40"50 LASHWIN
 ㊳ 20'40"50 CONCR I 20'40"50 LASHWIN
 ㊴ 20'40"50 CONCR I 20'40"50 LASHWIN
 ㊵ 20'40"50 CONCR I 20'40"50 LASHWIN
 ㊶ 20'40"50 CONCR I 20'40"50 LASHWIN
 ㊷ 20'40"50 CONCR I 20'40"50 LASHWIN
 ㊸ 20'40"50 CONCR I 20'40"50 LASHWIN
 ㊹ 20'40"50 CONCR I 20'40"50 LASHWIN
 ㊺ 20'40"50 CONCR I 20'40"50 LASHWIN
 ㊻ 20'40"50 CONCR I 20'40"50 LASHWIN
 ㊼ 20'40"50 CONCR I 20'40"50 LASHWIN
 ㊽ 20'40"50 CONCR I 20'40"50 LASHWIN
 ㊾ 20'40"50 CONCR I 20'40"50 LASHWIN
 ㊿ 20'40"50 CONCR I 20'40"50 LASHWIN

- Q23. RACING BIKE, PARKING
- Q24. NEW GRAVEL FOR JUE' CONTO.
- Q25. 4" W/4" DI COMPOSED GRAN U.
- Q26. 12" W/4" ASPHAL PAVING
- Q27. EXISTING BROWWOOD TRAIL TO HUMAN
- Q28. EXISTING 24" LANDSCAPE ILLUMINATED
- Q29. TO GRAVEL 6" TO 12" W/4" 12" BOLD
- Q30. 12" TO 18" BOLD 12" BOLD 12" BOLD

1. THERE ARE TWO SACGARDOS ON THE 4
2. "HOW WOOD TIES THAT W. B. E.
3. THE SACGARDOS ARE ASSIGNED WITH "BROUGHT"
4. TO SAN FRANCISCO, CALIF. BY AIR
5. 3. E. POSEY, / ANDERSON, AND
6. SAN GABRIEL, CALIF. TIME ALONG
7. 4. ASSASSIN, SAC TARGET, 27.5 OF 31-2
8. THE SACGARDOS, SAC TARGET, 27.5 OF 31-2
9. 5. SACGARDOS, SAC TARGET, 27.5 OF 31-2
10. 6. SACGARDOS, SAC TARGET, 27.5 OF 31-2
11. 7. SACGARDOS, SAC TARGET, 27.5 OF 31-2
12. 8. SACGARDOS, SAC TARGET, 27.5 OF 31-2
13. 9. SACGARDOS, SAC TARGET, 27.5 OF 31-2
14. 10. SACGARDOS, SAC TARGET, 27.5 OF 31-2
15. 11. SACGARDOS, SAC TARGET, 27.5 OF 31-2
16. 12. SACGARDOS, SAC TARGET, 27.5 OF 31-2
17. 13. SACGARDOS, SAC TARGET, 27.5 OF 31-2
18. 14. SACGARDOS, SAC TARGET, 27.5 OF 31-2
19. 15. SACGARDOS, SAC TARGET, 27.5 OF 31-2
20. 16. SACGARDOS, SAC TARGET, 27.5 OF 31-2
21. 17. SACGARDOS, SAC TARGET, 27.5 OF 31-2
22. 18. SACGARDOS, SAC TARGET, 27.5 OF 31-2
23. 19. SACGARDOS, SAC TARGET, 27.5 OF 31-2
24. 20. SACGARDOS, SAC TARGET, 27.5 OF 31-2
25. 21. SACGARDOS, SAC TARGET, 27.5 OF 31-2
26. 22. SACGARDOS, SAC TARGET, 27.5 OF 31-2
27. 23. SACGARDOS, SAC TARGET, 27.5 OF 31-2
28. 24. SACGARDOS, SAC TARGET, 27.5 OF 31-2
29. 25. SACGARDOS, SAC TARGET, 27.5 OF 31-2
30. 26. SACGARDOS, SAC TARGET, 27.5 OF 31-2
31. 27. SACGARDOS, SAC TARGET, 27.5 OF 31-2
32. 28. SACGARDOS, SAC TARGET, 27.5 OF 31-2
33. 29. SACGARDOS, SAC TARGET, 27.5 OF 31-2
34. 30. SACGARDOS, SAC TARGET, 27.5 OF 31-2
35. 31. SACGARDOS, SAC TARGET, 27.5 OF 31-2
36. 32. SACGARDOS, SAC TARGET, 27.5 OF 31-2
37. 33. SACGARDOS, SAC TARGET, 27.5 OF 31-2
38. 34. SACGARDOS, SAC TARGET, 27.5 OF 31-2
39. 35. SACGARDOS, SAC TARGET, 27.5 OF 31-2
40. 36. SACGARDOS, SAC TARGET, 27.5 OF 31-2
41. 37. SACGARDOS, SAC TARGET, 27.5 OF 31-2
42. 38. SACGARDOS, SAC TARGET, 27.5 OF 31-2
43. 39. SACGARDOS, SAC TARGET, 27.5 OF 31-2
44. 40. SACGARDOS, SAC TARGET, 27.5 OF 31-2
45. 41. SACGARDOS, SAC TARGET, 27.5 OF 31-2
46. 42. SACGARDOS, SAC TARGET, 27.5 OF 31-2
47. 43. SACGARDOS, SAC TARGET, 27.5 OF 31-2
48. 44. SACGARDOS, SAC TARGET, 27.5 OF 31-2
49. 45. SACGARDOS, SAC TARGET, 27.5 OF 31-2
50. 46. SACGARDOS, SAC TARGET, 27.5 OF 31-2
51. 47. SACGARDOS, SAC TARGET, 27.5 OF 31-2
52. 48. SACGARDOS, SAC TARGET, 27.5 OF 31-2
53. 49. SACGARDOS, SAC TARGET, 27.5 OF 31-2
54. 50. SACGARDOS, SAC TARGET, 27.5 OF 31-2
55. 51. SACGARDOS, SAC TARGET, 27.5 OF 31-2
56. 52. SACGARDOS, SAC TARGET, 27.5 OF 31-2
57. 53. SACGARDOS, SAC TARGET, 27.5 OF 31-2
58. 54. SACGARDOS, SAC TARGET, 27.5 OF 31-2
59. 55. SACGARDOS, SAC TARGET, 27.5 OF 31-2
60. 56. SACGARDOS, SAC TARGET, 27.5 OF 31-2
61. 57. SACGARDOS, SAC TARGET, 27.5 OF 31-2
62. 58. SACGARDOS, SAC TARGET, 27.5 OF 31-2
63. 59. SACGARDOS, SAC TARGET, 27.5 OF 31-2
64. 60. SACGARDOS, SAC TARGET, 27.5 OF 31-2
65. 61. SACGARDOS, SAC TARGET, 27.5 OF 31-2
66. 62. SACGARDOS, SAC TARGET, 27.5 OF 31-2
67. 63. SACGARDOS, SAC TARGET, 27.5 OF 31-2
68. 64. SACGARDOS, SAC TARGET, 27.5 OF 31-2
69. 65. SACGARDOS, SAC TARGET, 27.5 OF 31-2
70. 66. SACGARDOS, SAC TARGET, 27.5 OF 31-2
71. 67. SACGARDOS, SAC TARGET, 27.5 OF 31-2
72. 68. SACGARDOS, SAC TARGET, 27.5 OF 31-2
73. 69. SACGARDOS, SAC TARGET, 27.5 OF 31-2
74. 70. SACGARDOS, SAC TARGET, 27.5 OF 31-2
75. 71. SACGARDOS, SAC TARGET, 27.5 OF 31-2
76. 72. SACGARDOS, SAC TARGET, 27.5 OF 31-2
77. 73. SACGARDOS, SAC TARGET, 27.5 OF 31-2
78. 74. SACGARDOS, SAC TARGET, 27.5 OF 31-2
79. 75. SACGARDOS, SAC TARGET, 27.5 OF 31-2
80. 76. SACGARDOS, SAC TARGET, 27.5 OF 31-2
81. 77. SACGARDOS, SAC TARGET, 27.5 OF 31-2
82. 78. SACGARDOS, SAC TARGET, 27.5 OF 31-2
83. 79. SACGARDOS, SAC TARGET, 27.5 OF 31-2
84. 80. SACGARDOS, SAC TARGET, 27.5 OF 31-2
85. 81. SACGARDOS, SAC TARGET, 27.5 OF 31-2
86. 82. SACGARDOS, SAC TARGET, 27.5 OF 31-2
87. 83. SACGARDOS, SAC TARGET, 27.5 OF 31-2
88. 84. SACGARDOS, SAC TARGET, 27.5 OF 31-2
89. 85. SACGARDOS, SAC TARGET, 27.5 OF 31-2
90. 86. SACGARDOS, SAC TARGET, 27.5 OF 31-2
91. 87. SACGARDOS, SAC TARGET, 27.5 OF 31-2
92. 88. SACGARDOS, SAC TARGET, 27.5 OF 31-2
93. 89. SACGARDOS, SAC TARGET, 27.5 OF 31-2
94. 90. SACGARDOS, SAC TARGET, 27.5 OF 31-2
95. 91. SACGARDOS, SAC TARGET, 27.5 OF 31-2
96. 92. SACGARDOS, SAC TARGET, 27.5 OF 31-2
97. 93. SACGARDOS, SAC TARGET, 27.5 OF 31-2
98. 94. SACGARDOS, SAC TARGET, 27.5 OF 31-2
99. 95. SACGARDOS, SAC TARGET, 27.5 OF 31-2
100. 96. SACGARDOS, SAC TARGET, 27.5 OF 31-2



PROPOSED SITE PLAN
SCALE: 1"=30'

 $\frac{\partial}{\partial z}$

- PROPERTY BOUNDARY - N
 SHOOTING 47' INCHES
 ADJACENT PROPERTY BOUNDARY LINE
 ROADWAY CENTERLINE
 FENCING SETBACK LINE
 FENCING 47' INCHES
 PROPOSED 47' INCHES
 EXISTING 47' INCHES
 EXISTING SETBACK LINE & MAIN CUL-
 DEMINANCE
 BOUNDARY
 BICYCLE PARKING SPACES (X200)
 UNIMPAVED FLOOR ELEVATION
 EXISTING CONCRETE WALKWAY
 EXISTING HAZARDOUS WASTE
 TRENCH (HAZARDOUS WASTE)
 EXISTING FENCING LINE

111 225

UNIMATED LABOR ELEVATION
EXISTING CONTOLR W/ELEVATION
PROVISION HAZARD SLTBACK
100 YR FLOOD LIMIT

LOCATION MAP

LOCATED IN
N 4 7.55 - 271. 545RM,
DELA COUNTY, COLORADO

FILENAME: DISCRIPTION

THE EASTERNLY 264 FEET OF THE SOUTHERLY 330 FEET OF THE SOUTHEAST QUARTER OF THE NORTHEAST QUARTER OF THE SOUTHWEST QUARTER OF SECTION 4, TOWNSHIP 15 SOUTH, RANGE 11 EAST, COCHISE AND SALT RIVER BASIN AND MCDONALD, PIMA COUNTY, ARIZONA, EXCEPTING ANY PORTION LYING WITHIN SANJANO ROAD.

SECTION

PROJECT SITE IS 4.3 ACRES
EXISTING ZONING - CR 1 & CR-2
LAND USE INTENSITY IS S-6
FUTURE ROCKS ACTIVITY CENTER (AV)
PROPOSED ZONING IS CR-2
PROPOSED LAND USE IS COMMERCIAL
PARCEL NUMBER IS 213-07-0140

OWNER / DIRECTOR:

MARK & VARY LOU WRIGHT
5020 N. LAKE A YUCCA ROAD
TUCSON, ARIZONA 85743 9126
PHONE # (520) XX

$$\frac{2}{3} \frac{1}{2} \frac{1}{3} \frac{1}{2} \frac{1}{3}$$

JAS. ENGINEERING
JUDITH A. STANLEY, P.E.
5550 N. ORACLE ROAD
TUCSON, AZ 85705
20-GNL # (520) 390-7920

X-IGN : 1465

SHEET COVER SHEET / S 11 P. AN

7
5
4
3
2
1

2-9SCXXX

THE SHOPS ON SANDARIO

[illegible]