

Cadmium	1.9
Copper	75
Lead	15
Mercury	0.85
Nickel	21
Selenium	5
Zinc	140

b. Tracking Site Lifetime Application

The tracking of site lifetime application is not required by 40 CFR 503 for exceptional quality biosolids; however this tracking is routinely done. The potential life for biosolids application for a particular site is calculated and reported on a yearly basis.

c. Crop Verification Procedures

Solid Solutions land applies biosolids to each field according to the intended crop of the farmer. To verify the actual crop grown, Solid Solutions will perform and retain one or more of the following for each field:

- Photograph the crop grown after biosolids application
- Attain crop report submitted by farmer to agencies like the Farm Service Agency
- Attain certified harvest records from the farmer

3. Land Application Management Plan

General Operating Constraints

Land application of biosolids is regulated at the federal level by the 40 CFR 503 Rule, which defines the minimum standards required for land application of biosolids (defining processing methods, which determine the vector attraction reduction and the pathogen level, as well as defining the concentration of metals, crops allowed, and site access restrictions). At the state level, biosolids are regulated by the Arizona Department of Environmental Quality (ADEQ), who issues the applicable approvals.

The operation is finally governed by service level agreements signed between Solid Solutions and its customers. These contracts define the minimum requirements. Because Solid Solutions may service many customers simultaneously, it will apply the contract conditions that are most stringent to its operation.

B. Management Practices

Land application typically follows harvest of any standing crop and the disking of the site to remove any furrows. The project or field manager then

flags any restricted areas by measuring the appropriate setback as defined in by the ADEQ requirement or the local requirements, whichever is stricter. The following management practices will be followed:

- Biosolids will not be applied at an application rate greater than the agronomic rate of the crop planned for the site
- Biosolids will not be applied to land that is flooded
- Biosolids will be incorporated into the soil
- Every site will grow a viable crop prior to any additional biosolids application

C. Equipment Utilized

Solid Solutions or its subcontractors provide all the equipment used to transport and to apply biosolids. Biosolids are transported in end-dump semi trailers pulled by tandem-axle truck tractors. The net volume capacity of the trailers is between 40 and 54 cubic yards, which correspond to a net weight capacity of between 22 and 27 tons. The trailers are equipped with roll tarps that are secured by a number of ratchet tie-straps.

Biosolids are unloaded at the designated land application site. Biosolids are then loaded onto spreaders pulled by a standard agricultural tractor using a front-end loader. A disk, also pulled by a standard agricultural tractor, incorporates the biosolids into the soil. Water trucks are used to supply the water for washing the biosolids residues off the trailers and to water the access roads to the fields to reduce dust. Water pumps feeding radial sprinkle irrigation systems are used to water the fields throughout the growing season.

D. Transportation

a. Permits

Solid Solutions and its sub-contract haulers are permitted as a motor vehicle contract carrier by the Interstate Commerce Commission and as a highway contract carrier by the California Public Utilities Commission and has an International Registration Plan (IRP) license to haul into Arizona.

b. Communication with Wastewater Plants

Denali Water communicates directly with the wastewater treatment plants regarding the scheduling of trucks. At most facilities, we have the facilities provide a schedule of loads needs on a daily basis for the upcoming week by Thursday or Friday via email to our regional dispatch email address. Any changes that do occur during the week can be made the day before via email or phone. If weekly schedules are not possible, we ask the facility to email our dispatch department no later than 3pm for the following day's schedule.

c. Truck Routes

The project manager, on a daily basis, routes truck drivers to the assigned fields. The factors that influence routing include traffic (accidents, road construction) location of residences, potential for dust, and school bus routes.

d. Delivery windows

The project manager coordinates with the client's loading coordinator the best delivery window, which depends on the travel distance, traffic, route, and impact on the public. Each load is accompanied by a load ticket. The load ticket includes the load's weight, origination, destination, and driver signature. Each ticket may be signed by the field operator or operations manager at the site. In the case that no field operator is available, a load log sheet, located inside the water truck's cabin, is filled out by the driver indicating the date, time and field number the load is off-loaded. The load log is also used as a backup to the load ticket to show the time and date the load is delivered.

e. Truck Maintenance, Appearance, and Recordkeeping

All trucks and trailers are properly maintained to provide a safe transport of biosolids. The mechanical maintenance schedule of truck tractors follows the manufacturer's recommendations and the records are kept in Fleet Transportation's office. The structural integrity of truck trailers are also periodically tested by visual inspection and repaired accordingly to avoid accidents and biosolids spills. This includes the installation and maintenance of adequately working safety pins on trailer gates as well as the maintenance of tarps and tarp mechanisms. All repairs are logged and the records are kept in the Fleet Transportation's office. All truck maintenance records are made available to clients upon request.

Solid Solutions uses owner/operators to haul biosolids to Arizona. The owner/operators have a sleeping compartment on their trucks so if they hit their limit on miles driven or time driving, they can rest on the road. The owner/operators keep logs of their miles and time driving.

f. Driver Training

Solid Solutions' truck drivers receive training on a continual basis on the following:

- Loading and procedures at wastewater treatment plants
- Safety and biosolids
- Do's and don'ts of biosolids transportation
- Spill prevention and spill cleanup procedure
- Unloading and cleaning procedure
- Recordkeeping
- Public relations

The records of this training are kept in the Solid Solutions' Garden Grove field office and are made available to clients upon request.

E. Unloading and Washing

When a truck arrives at the designated field, the biosolids are unloaded onto the designated area and the interior of the trailer thoroughly washed. Before leaving, the trailer is tarped and then the exterior washed clean of any biosolids residues.

F. Spreading

Once the spreader is loaded with biosolids material and is at the designated site, it spreads the material uniformly on the land until the application rate for the planned crop is reached. A rough application rate can be calculated by dividing the capacity of the spreader by the area spread by the load (multiplying the distance traveled by the average broadcast distance). Depending on the soil conditions, the desired application rate can be divided in two as described below.

G. Incorporation

After spreading, the material may be disked into the soil with a disk pulled by an agricultural tractor. For certain soil conditions, and to assure better blending and incorporation into the soil, the material can be spread in two complete cycles of spreading and incorporation. Prompt and adequate incorporation is done to avoid public nuisances, when necessary, such as odors and flies.

H. Staff Training

The training includes basic biosolids regulations on the federal, state, and local level as well as on the client's particular requirements. The training includes safety aspects related to biosolids handling, endangered species, public perception issues, and communication with the public. The training of staff is done on an as needed basis and the records are kept in the Solid Solutions' main office and are made available to clients upon request. Solid Solution arranges the best available time for regular and subcontracted staff to receive additional training by the WWTP's after previous notification.

4. Controls

Buffer zones are set-back areas that will not receive biosolids. These buffers provide additional water quality protection and will help minimize potential nuisance. The buffer zone distances to be observed are:

- 1000 feet from residences, unless incorporated within 10 hours
- 1000 feet from a public or semi-public water system wells
- 250 feet from any other water well

- 33 feet from surface waters
- 25 feet from public and private right of ways

A. Soil Testing

Soils from each field may be analyzed prior to the initial biosolids application, as per ADEQ regulations. A composite of soil from three depths ranging from 3-11 inches are sampled at eight separate, randomly selected locations, and are analyzed on each permitted site.

B. Odor Control

To avoid odor impacts, Solid Solutions, in coordination with the farms and the ADEQ, will abide by the following:

- a. Biosolids will be incorporated into the soil, when necessary. This minimizes the exposure of the biosolids to the air and reduces the release of odors.
- b. Buffer zones from sensitive receptors are met, including a 1000 foot buffer zone from residences. This allows any odors released from the site to dissipate before reaching the sensitive receptor.
- c. Trailers are tarped. This keeps odors from escaping from the trailer during the transportation of the biosolids.

C. Dust Control

Dust is the product of typical farming operations. The delivery of biosolids can create additional dust to the farming operation. This management plan includes the following odor control measures on an as needed basis:

- a. Dirt roads used will be watered if excessive dust is produced where it leaves the farm's boundaries
- b. Buffer zones from sensitive receptors are met. This keeps the movement of dust off-site to a minimum.

D. Noise Control

The delivery and application of biosolids has the potential for creating excess noise. This management plan includes the following noise control measures on an as needed basis:

- a. Haul routes are established to avoid residential and school zones, and noise sensitive areas.
- b. Biosolids deliveries and operations are limited to day light hours if operations or haul routes are near residential areas or sensitive receptors.
- c. Buffer zones from sensitive receptor are met. This keeps a distance between operation activity and the sensitive receptors.

E. Access Control

The farms generally keep no trespassing signs or "Keep Out" signs posted. Current sites are remotely located without easy public access. Farmers and farm crew monitor fields to control public access.

F. Water Quality Controls

To protect surface water from possible degradation, soil erosion and the off-site movement of biosolids must be minimized. The off-site movement of biosolids and soil erosion is minimized by the following actions:

- a. Set buffer zones as described in the stringent ADEQ requirements
- b. Organic matter in biosolids help bind soils and help reduce soil erosion
- c. Biosolids are applied at the nitrogen need of the crop

Ground water degradation is prevented by the following actions:

- a. Biosolids are applied at the nitrogen need of the crop. Because nitrogen is the most mobile constituent in the biosolids, applying it at rate the crop will use ensures that no nitrate will leach through the soil and affect the groundwater.
- b. Soil typically adsorbs metals to its particles. Most soils, including those found in Arizona, have a negative charge measured as Cation Exchange Capacity (CEC). Metals are positively charged called cations. Once metals enter a soil, they adhere to the soil particles, which prevent the metal from migrating to the groundwater.
- c. Buffer zones from active wells, homes and surface waters helps prevent biosolids from being placed near sensitive areas.

1) Surface Water

The setbacks from application sites to surface water courses, either dry or flowing, are 33 feet.

2) Groundwater

The setbacks to water wells are 250 feet and to public and semi-public wells are 1000 feet.

G. Inspections

Verification of regulatory compliance is done by several different agencies. The Arizona Department of Environmental Quality, the EPA Region IX, and the biosolids generators perform periodic inspections and report with verbal and written notifications and recommendations for improvement.

5. Emergency response

To protect the environment and the public in case a spill occurs, Solid Solutions has prepared a Spill Response Plan (See Appendix). The Spill Response Plan

includes:

- Emergency Contacts and Notification procedures
- Personal Protective equipment
- Response instructions for spills during biosolids transport
- Response instructions if hazardous or unauthorized material is found

B. Spill Response

Please refer to Spill Response Plan for a complete description.

6. Monitoring

Many agricultural practices have the potential to impact the environment negatively. Chemical fertilizers, pesticides, herbicides and manures have been used on farm ground for generations, often at uncontrolled rates. Biosolids, on the other hand, are regulated intensely to protect public health as well as the environment. The EPA's 40 CFR Part 503 regulations, as well as state and local regulations, have set up guidelines to protect environmental quality and the public.

A. Biosolids Testing

In order to ensure compliance with the nutrient loading and agronomic application limits, biosolids are periodically tested by an Arizona certified lab, typically A&L Eastern Agricultural laboratories.

B. Recordkeeping

Solid Solutions collects and maintains the following information indefinitely:

- The location, by quarter section, section, township, range and assessor's parcel number, of each site on which biosolids is applied, including a map, of scale 1:24,000 or larger, accurately showing the location.
- The number of hectares in each site on which biosolids is applied.
- The date biosolids was applied to each site.
- The cumulative amount of each pollutant, in pounds listed in 40 CFR 503 in the biosolids applied to each site.
- The amount of biosolids, in dry tons, applied to each site.
- The following certification statement:

"I certify, under penalty of law, that the requirements to obtain information in 40 CFR 503.12(e) (2) have been met for each site on which bulk sewage sludge is applied. This determination has been made under my direction and supervision in accordance with a system designed to ensure that qualified personnel properly gather and evaluate the information used to determine that the requirements to obtain information have been met. I am aware that there

are significant penalties for false certification including fine and imprisonment”.

- A description of how the requirements to obtain information in the above paragraph are met.

Solid Solutions collects and maintains the following information for at least five years:

- See above recordkeeping

C. Reporting

Solid Solutions, on a quarterly basis, reports to the WWTPs on a pre-selected number of activities that are deemed crucial for the sustainable management of biosolids.

Solid Solutions will submit Reports to the Arizona Department of Environmental Quality, the EPA, and the WWTP, on an annual basis or as often as required, summarizing all the biosolids activity and monitoring that occurred during the previous time period. The report will include:

- a. Application Information for each site
- b. Quantity of biosolids applied
- c. Application area applied
- d. Total nitrogen concentration in biosolids
- e. Nitrogen loading
- f. Crop
- g. Pollutant loading for each application site
- h. Constituent concentration from each source
- i. Site map

SPILL RESPONSE PLAN

This Spill Response Plan has been written to establish detailed procedures to be followed in case a spill occurs while hauling biosolids. This Plan is provided to and explained to the personnel involved in the hauling of biosolids so that transportation requirements and spill clean up procedures are understood.

Biosolids Hazards

Biosolids are considered non-hazardous and non-toxic. Spilled biosolids can cause roadways to become slick. Biosolids should not be allowed to wash into storm drains or water ways.

Use gloves to clean or handle biosolids. Always wash your hands and any body part that contacts biosolids with soap and water. Do not eat or drink while handling or working with biosolids.

Emergency Contacts and Notification Procedures

In the case a spill or accident occurs during the transportation of biosolids, the following emergency contacts will be contacted, regardless of the amount spilled:

Noe Ramirez - Dispatcher	Cell (951) 269-9481
Dale Hanna - Dispatcher	Cell (310) 663-2945
Office	(714) 799-0801
Chris Marks - Environmental Manager	Cell: (760) 801-3175

Once the spill is contained, the following agencies are notified of the spill:

In California

- Office of Emergency Services (800) 852-7550
- California Highway Patrol
 - Riverside County (951) 637-8000
 - Orange County (949) 559-7888
 - San Diego Co. (619) 220-5492
 - Inland Empire (909) 388-8000
 - El Centro (760) 482-2500
- County Environmental Health Agencies
 - O.C. EHS (714) 667-3600
 - San Diego DEH (619) 338-2222
 - Riverside Environmental Health
 - Indio (909) 863-7570
 - Riverside (951) 955-8980
 - San Bernardino DPH (909) 884-4056

Imperial DEH	(760) 482-4203
Water Boards	
Santa Ana	(909) 782-4130
San Diego	(858) 467-2952
Colorado	(760) 346-7491
In Arizona	
Arizona Highway Patrol	(928) 782-1679
ADEQ	(602) 771-4612

The Dispatcher or Denali representative will notify the wastewater treatment plant (WWTP) where the material originated from about the spill as soon as possible.

If the spill location occurs in a different jurisdiction, the appropriate agencies will be contacted regarding the spill.

Personal Protective Equipment

Trucks hauling biosolids will be carrying the following equipment for their protection in case of a biosolids spill:

- a) First Aid Kit
 - 1. Band aids
 - 2. Gauze
 - 3. Antiseptic ointments
 - 4. Burn ointments
- b) Gloves
- c) Shovel (to avoid contact with biosolids)
- d) Broom (to avoid contact with biosolids)
- e) Kitty litter or sand
- f) Cell Phone
- g) Reflective triangles or cones

Response Instructions for Spills

If a spill or accident occurs and the driver is not hurt, the following procedures will be followed:

DRIVER PROCEDURES

1. The Driver will be sure that he/she is safe and not in any danger.
2. If the Driver is in danger or injured, Driver will notify the highway patrol or law enforcement (**DIAL 911**) immediately if the hauling accident or spill occurred on public right-of-way.
- *Give location and amount of spill to individual(s) contacted.
3. Driver will place traffic cones or reflector triangles to divert traffic around spill.
4. Driver will contain spill, if possible or necessary, away from any waterways or

- drains by the use of shovel or appropriate containment measure.
5. Driver will notify Dispatcher of the spill location and size.
 6. Traffic will be controlled until authorities arrive.
 7. Spill will be cleaned and returned to trailer with shovel and broom, if small enough and if truck and trailer are operable.
 8. Biosolids Spill Report Form will be completed (see attached form).
 9. Truck will stay at site until clean up is complete.

DISPATCHER PROCEDURES

1. The appropriate agencies will be contacted (see Emergency Contacts above).
2. If spill requires a clean up crew, one will be dispatched. The crew will include:
3. Two person crew, unless more personnel is needed
4. Rubber tired front-end loader or other loader
5. Sandbags and/or hay bales, or absorbent material
6. Street sweeper
7. Shovels, brooms, cones and flares
8. If truck or trailer is not operable, an alternative truck and trailer will be sent.
9. Contact the generator where the biosolids originated as soon as possible.
10. Biosolids Spill Report will be completed and submitted to the appropriate agencies and WWTP
11. If spill occurs in Arizona, as required by the permit with the State of Arizona, the ADEQ will be notified within 24 hours with a detailed report

Spill Clean Up

If spill does not require a crew for clean up, the driver will replace spilled biosolids in trailer. If biosolids replaced into trailer were not contaminated, the load will be delivered to its intended site. Otherwise, contaminated biosolids will be sent to an approved landfill for disposal.

If spill does require a crew, the following clean up will be performed:

1. Contain biosolids to the spill area and block drains with sand, sandbags, or absorbent material.
2. Place biosolids into one pile using shovels, broom, and/or loader.
3. Load biosolids into operable truck and trailer with loader and shovels.
4. Clean road, if necessary, with street sweeper.
5. Follow any other instruction by local permitting agency or health officer.
6. Transport spill material to intended site or disposal site, if contaminated.
7. Transport equipment used to intended site or wastewater treatment site to be washed and cleaned.

Onsite (In-plant) Spill Clean Up

The driver is required to clean up any biosolids spill or leakage, regardless of size, that occurs within a plant's facility. In the event the driver cannot clean up the spill by himself, then he must inform his dispatcher or operation manager and request assistance. At no time should contractors rely on or request assistance from the plant staff to clean up an in-plant spill or leakage.

If Hazardous or Unauthorized Materials are Found

If hazardous or unauthorized materials are found, containment and notification procedures will be followed as detailed in Response Instructions for Biosolids Spill. No clean up will begin until notification of spill and recognition of hazardous or unauthorized materials are explained to Operation Manager and appropriate agencies. Clean up and disposal will be performed according to instructions given by the appropriate agency.

Biosolids Spill Report

After biosolids are cleaned, a Biosolids Spill Report will be completed and sent to local regulatory agencies and the WWTP's. It will include:

- a. Location, date and time of spill
- b. Biosolids Spill Report Form completed by driver (see attached)
- c. Clean up measures taken
- d. Biosolids use or disposal after clean up
- e. Any other pertinent information on the spill

This report will be sent to the appropriate agencies and will be kept on file.

Emergency Spill Response Companies

Patriot Environmental (800) 624-9136

Locations San Diego
Orange
Inland Empire
Richmond
Sacramento
Pleasant Hills

Wheel Loaders

United Rentals (844) 873-4948

Locations – 31 in Southern California (check online for closest branch at www.unitedrentals.com or call)

Spill Report Form

Name: _____ Date Completed: _____

Date of Spill: _____ Time of Spill: _____

Hauler Company Name: _____

Driver's Name: _____

Truck License #: _____ Trailer License #: _____

Load Origination: _____ Load #: _____

Location of Spill: _____

Cause of Spill: _____

Quantity of Biosolids Spilled: _____

Action Taken to clean-up spill _____

Tractor and Trailer Condition: _____

Weather Conditions: _____

Did an accident occur? Yes or No

If Yes, Explain Damage: _____

Explain Injuries: _____

List Agencies contacted: _____

Signature _____

Date _____



ARIZONA DEPARTMENT OF ENVIRONMENTAL QUALITY
Water Quality Compliance Section
1110 W. Washington Street, MO5415B-1
Phoenix, Arizona 85007
602-771-4612 (voicemail 602-771-4505 (fax))

**BIOSOLIDS LAND APPLICATION AND SUPPLEMENTAL REQUEST
FOR REGISTRATION****

APPLICATOR INFORMATION

Name of Company or Individuals: Solid Solutions, L.L.C. Telephone: 760-801-3175
Fax: 714-799-0140

Address: 12340 Seal Beach Blvd., Suite # B-383

City: Seal Beach State: CA Zip: 90740

Contact Person: Chris Marks *****Email: cmarks@solidstech.com

NPDES Permit # (if applicable) Other Permits: Specify #

Are you an: ☐ Individual or ☒ Corporation/Association/Labor Union/Other Legal Entity

GENERATOR/PREPARER OF BIOSOLIDS

FACILITY TYPE ☒ WWTP ☐ COMPOSTER ☐ BIOSOLIDS PROCESSING ☐ PUBLIC/PRIVATE

Name of Company/Individuals: City of Mesa - GWRP Telephone: 480-644-6014

Address: 4400 S. Greenfield Road

City: Gilbert State: AZ City: Gilbert

Contact Person: Ronnie Lopez Telephone: 480-644-6014

NPDES #: (if applicable) AZ0024031 State Equivalent Specify #:

Pathogen Treatment Alternative ☐ Class A - Alternative # _____ ☒ Class B - Alternative # 5

Vector Treatment Method: Option 1 Check here if you produce EQB. ☐ EQB

BIOSOLIDS METAL CONTENT IN Mg/Kg ON DRY WEIGHT BASIS (attach analytical report)

As = ND	As = ND	As = ND	As = ND	As = ND
Hg = 0.8	Hg = 0.8	Hg = 0.8	Hg = 0.8	Hg = 0.8

NAME OF LABORATORY UTILIZED: Aerotech Environmental Laboratories

DATE AND NUMBER OF MOST RECENT SAMPLES: 8/16/2007

**ADEQ review of your application is subject to Licensing time frames (LTF) statute under A.R.S. 41-2072 through 41-1079 and the licensing time frames rules under A.A.C. R18-1-501 through R18-1-525. The review time is 15 days.

NOTE TO APPLICATORS:

- A person shall not apply bulk biosolids to the land if the biosolids are likely to adversely affect a threatened or endangered species as listed under section 4 of the Endangered Species Act (16 U.S.C 1533), or its designated critical habitat defined in 16 U.S.C. 1532. ADEQ encourages applicants to inquire with the U.S. Fish and Wildlife Service to determine if the proposed application may have an adverse affect.
- Applicants should contact the Arizona State Parks Board to confirm that biosolids land application activities at a specific site do not adversely effect "historic properties."

SITE SPECIFIC INFORMATION FOR APPLICATION SITE (complete for each site)			
Name of Company or Individuals: J Farms		Telephone: 520-510-6032	
Address: 6334 E. Martin Road			
City: Coolidge		State: AZ	Zip: 85228
Contact Person: Jaime Shaw		Telephone: 520-510-6032	
Site Location			
Cross streets/landmarks: Highway 287 between Arizona Blvd and N Nafzinger			
Directions			
To Site: : Take Hwy 287 to Christensen Road and turn left			
Nearest City or Town Coolidge		County: Pinal	
Description of Site:			
<input type="checkbox"/> Reclamation Site <input checked="" type="checkbox"/> Farm <input type="checkbox"/> Other: _____ includes composting site or biosolids processing site			
Township: 4S		Range: 8E	Section: 10, 11
Total Acres: 516.6		Depth to Groundwater: 100+ ft	
Field ID: PN 1-1	Latitude: 33 0' 36"N	Longitude: 111 31' 5" W	No. of Acres: 26.1
Field ID: PN 1-2	Latitude: 33 0' 32"N	Longitude: 111 30' 50" W	No. of Acres: 17.1
Field ID: PN 1-3	Latitude: 33 0' 32"N	Longitude: 111 30' 35" W	No. of Acres: 18.9
Field ID: PN 1-4	Latitude: 33 0' 17"N	Longitude: 111 31' 5" W	No. of Acres: 23.5
Field ID: PN 1-5	Latitude: 33 0' 17"N	Longitude: 111 30' 50" W	No. of Acres: 39.6
SOIL METAL CONTENT IN Mg/Kg ON DRY WEIGHT BASIS			
*Soil analysis is only required if site had previously received biosolids and sludge application records are not available.			
* Attach soil analysis, if required above	As =	Cd =	Cu = Pb =
	Hg =	Ni =	Se = Zn =
SLOPE: Check the applicable condition:	<input checked="" type="checkbox"/> None of the fields have a slope greater than 6%.		
	<input type="checkbox"/> The slope is greater than 6% on part of the site, biosolids will not be applied to that portion.		
	<input type="checkbox"/> The slope is greater than 6% and NPDES Permit No. _____ applies to the site.		
PUBLIC NOTICE: 2 weeks required		<input type="checkbox"/> Proof of Public Notice with the Request for Registration is attached	
I CERTIFY THAT THE ABOVE INFORMATION IS COMPLETE AND TRUE TO THE BEST OF MY KNOWLEDGE.			
SIGNATURE		TITLE	DATE

ADDITIONAL FIELDS

Field ID: PN 1-6	Latitude: 33 0' 17"N	Longitude: 111 30' 35" W	No. of Acres: 16.1
Field ID: PN 1-7	Latitude: 33 0' 17"N	Longitude: 111 30' 27" W	No. of Acres: 14.3
Field ID: PN 1-8	Latitude: 33 0' 42"N	Longitude: 111 30' 30" W	No. of Acres: 7.3
Field ID: PN 1-9	Latitude: 33 0' 29"N	Longitude: 111 29' 32" W	No. of Acres: 120.1
Field ID: PN 1-10	Latitude: 33 0' 29"N	Longitude: 111 30' 1" W	No. of Acres: 23.5
Field ID: PN 1-11	Latitude: 33 0' 17"N	Longitude: 111 30' 12" W	No. of Acres: 55.9
Field ID: PN 1-12	Latitude: 33 0' 17"N	Longitude: 111 29' 54" W	No. of Acres: 41.9
Field ID: PN 1-13	Latitude: 33 0' 26"N	Longitude: 111 31' 4" W	No. of Acres: 28.1
Field ID: PN 1-14	Latitude: 33 0' 26"N	Longitude: 111 30' 49" W	No. of Acres: 18.7
Field ID: PN 1-15	Latitude: 33 0' 27"N	Longitude: 111 30' 32" W	No. of Acres: 34.4
Field ID: PN 1-16	Latitude: 33 0' 4"N	Longitude: 111 29' 44" W	No. of Acres: 12.6
Field ID: PN 1-17	Latitude: 32 59' 58" N	Longitude: 111 29' 48" W	No. of Acres: 18.5

Nov. 30. 2007 10:26AM



Janet Napolitano
Governor

ARIZONA DEPARTMENT OF ENVIRONMENTAL QUALITY

1110 West Washington Street • Phoenix, Arizona 85007
(602) 771-2300 • www.azdeq.gov

No. 9893 P. 1



Stephen A. Owens
Director

Notice of Acceptance Biosolids Application Registration

November 30, 2007

Mr. Chris Marks
Solid Solutions, L.L.C
12340 Seal Beach Blvd
Suite # B-383
Seal Beach, CA 90740

Re: Land Application Site Registration and Addition of Generators for J Farms

Dear Mr. Marks:

The Arizona Department of Environmental Quality (ADEQ) received the above referenced request for registration November 19, 2007. Upon reviewing this material, ADEQ has determined under A.A.C R18-9-1004 that your submittal is complete. Your registration is accepted. Please be advised that this registration is valid only for biosolids generated by the City of Mesa - NMWRP, and City of Mesa - GWRP to be land applied only at the fields that are now registered, with the following center field coordinates:

<u>Field ID</u>	<u>Latitude</u>	<u>Longitude</u>	<u>Field ID</u>	<u>Latitude</u>	<u>Longitude</u>
PN 1-1	N33.0102	W111.5181	PN 1-10	N33.0080	W111.5005
PN 1-2	N33.0090	W111.5140	PN 1-11	N33.0046	W111.5035
PN 1-3	N33.0090	W111.5097	PN 1-12	N33.0046	W111.4983
PN 1-4	N33.0048	W111.5180	PN 1-13	N33.0073	W111.5179
PN 1-5	N33.0048	W111.5141	PN 1-14	N33.0073	W111.5137
PN 1-6	N33.0048	W111.5099	PN 1-15	N33.0075	W111.5089
PN 1-7	N33.0048	W111.5075	PN 1-16	N33.0012	W111.4956
PN 1-8	N33.0118	W111.5084	PN 1-17	N32.9995	W111.4967
PN 1-9	N33.0080	W111.4924			

Northern Regional Office
1801 W. Route 86 • Suite 117 • Flagstaff, AZ 86001
(928) 779-0313

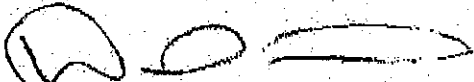
Southern Regional Office
400 West Congress Street • Suite 433 • Tucson, AZ 85701
(520) 628-6733

Page 2 of 2

As the registered land applicator you are required to comply with all applicable provisions as established in A.A.C. Title 18, Chapter 9, Article 10, titled "Disposal, use, and Transportation of Biosolids", for each land application site. Your annual report is due on or before February 19 of the next year (A.A.C. R18-9-1014). Required forms and more information on land application of biosolids in Arizona can be found on the following site:
<http://www.azdeg.gov/function/forms/appswater.html#bio>.

Please contact me at (602) 771-4612 if you have questions regarding this Notice or the status of your registration.

Sincerely,



Daniel L. Czecholinski, CHMM
Biosolids Program Coordinator
Water Quality Compliance Assurance Unit

Ref#: CA08084
LTF#: 46140



ARIZONA DEPARTMENT OF ENVIRONMENTAL QUALITY
Water Quality Compliance Section
1110 W. Washington Street, MO5415B-1
Phoenix, Arizona 85007
602-771-4612 (voicemail 602-771-4505 (fax))

**BIOSOLIDS LAND APPLICATION AND SUPPLEMENTAL REQUEST
FOR REGISTRATION****

APPLICATOR INFORMATION

Name of Company or Individuals: Solid Solutions, L.L.C. Telephone: 760-801-3175
Fax: 714-799-0140
Address: 12812 Valley View St, #9
City: Garden Grove State: CA Zip: 92845
Contact Person: Chris Marks *****Email: chrisamarks@comcast.net

NPDES Permit # (if applicable) Other Permits: Specify #
Are you an: ☐ Individual or ☒ Corporation/Association/Labor Union/Other Legal Entity

GENERATOR/PREPARER OF BIOSOLIDS

FACILITY TYPE ☒ WWTP ☐ COMPOSTER ☐ BIOSOLIDS PROCESSING ☐ PUBLIC/PRIVATE

Name of Company/Individuals: City of Mesa - GWRP Telephone: 480-644-6014
Address: 4400 S. Greenfield Road

City: Gilbert State: AZ City: Gilbert
Contact Person: Ronnie Lopez Telephone: 480-644-6014
NPDES #: State Equivalent
(if applicable) AZ0024031 Specify #:

Pathogen Treatment Alternative ☐ Class A - Alternative # _____ ☒ Class B - Alternative # 5

Vector Treatment Method: Option _____ Check here if you produce EQB. ☐ EQB

BIOSOLIDS METAL CONTENT IN Mg/Kg ON DRY WEIGHT BASIS (attach analytical report)

As = ND	Cd = ND	Cr = 36	Cu = 350	Pb = ND
Hg = 0.67	Mo = 16	Ni = 19	Se = ND	Zn = 780

NAME OF LABORATORY UTILIZED: Test America, Phoenix

DATE AND NUMBER OF MOST RECENT SAMPLES: 4/7/10

**ADEQ review of your application is subject to Licensing time frames (LTF) statute under A.R.S. 41-2072 through 41-1079 and the licensing time frames rules under A.A.C. R18-1-501 through R18-1-525. The review time is 15 days.

NOTE TO APPLICATORS:

- A person shall not apply bulk biosolids to the land if the biosolids are likely to adversely affect a threatened or endangered species as listed under section 4 of the Endangered Species Act (16 U.S.C 1553), or its designated critical habitat defined in 16 U.S.C. 1532. ADEQ encourages applicators to inquire with the U.S. Fish and Wildlife Service to determine if the proposed application may have an adverse affect.
- Applicators should contact the Arizona State Parks Board to confirm that biosolids land application activities at a specific site do not adversely effect "historic properties."

SITE SPECIFIC INFORMATION FOR APPLICATION SITE (complete for each site)			
Name of Company or Individuals: J Farms		Telephone: 520-510-6032	
Address: 6334 E. Martin Road			
City: Coolidge		State: AZ	Zip: 85228
Contact Person: Jaime Shaw		Telephone: 520-510-6032	
Site Location Cross streets/landmarks: Southwest of intersection of Kleck Rd and N Fast Track Road			
Directions To Site: : From Hwy 87 head East on Kleck Road to N Fast Track Rd			
Nearest City or Town Coolidge		County: Pinal	
Description of Site: <input type="checkbox"/> Reclamation Site <input checked="" type="checkbox"/> Farm <input type="checkbox"/> Other: _____ includes composting site or biosolids processing site			
Township: 6S		Range: 8E	Section: 13
Total Acres: 185		Depth to Groundwater: 100+ ft	
Field ID: PN 1-20	Latitude: 32 54' 10"N	Longitude: 111 28' 10" W	No. of Acres: 55
Field ID: PN 1-21	Latitude: 32 54' 25"N	Longitude: 111 28' 00" W	No. of Acres: 31
Field ID: PN 1-22	Latitude: 32 54' 10"N	Longitude: 111 28' 00" W	No. of Acres: 19
Field ID: PN 1-23	Latitude: 32 54' 00"N	Longitude: 111 28' 20" W	No. of Acres: 40
Field ID: PN 1-24	Latitude: 32 53' 50"N	Longitude: 111 28' 20" W	No. of Acres: 40
SOIL METAL CONTENT IN Mg/Kg ON DRY WEIGHT BASIS *Soil analysis is only required if site had previously received biosolids and sludge application records are not available.			
* Attach soil analysis, if required above	As =	Cd =	Pb =
	Hg =	Ni =	Zn =
SLOPE: Check the applicable condition:	<input checked="" type="checkbox"/> None of the fields have a slope greater than 6%.		
	<input type="checkbox"/> The slope is greater than 6% on part of the site, biosolids will not be applied to that portion.		
	<input type="checkbox"/> The slope is greater than 6% and NPDES Permit No. _____ applies to the site.		
PUBLIC NOTICE: 2 weeks required		<input type="checkbox"/> Proof of Public Notice with the Request for Registration is attached	
I CERTIFY THAT THE ABOVE INFORMATION IS COMPLETE AND TRUE TO THE BEST OF MY KNOWLEDGE.			
SIGNATURE		TITLE	DATE



Janice K. Brewer
Governor

ARIZONA DEPARTMENT OF ENVIRONMENTAL QUALITY

1110 West Washington Street • Phoenix, Arizona 85007
(602) 771-2300 • www.azdeq.gov



Benjamin H. Grumbles
Director

Notice of Acceptance Biosolids Application Registration

December 6, 2010

Mr. Chris Marks
Solid Solutions, L.L.C
12812 Valley View Street # 9
Garden Grove, CA. 92845

Re: Land Application Site Registration and Generators for J Farms:

Dear Mr. Marks:

The Arizona Department of Environmental Quality (ADEQ) received the above referenced request for registration on December 1, 2010. Upon reviewing this material, ADEQ has determined under A.A.C. R18-9-1004 that your submittal is complete. Your registration is accepted. Please be advised that this registration is valid only for biosolids generated by the City of Mesa - GWRP and the City of Mesa - NMWP, to be land applied only at the fields that are now registered, with the following center field coordinates:

<u>Field ID</u>	<u>Latitude</u>	<u>Longitude</u>	<u>Field ID</u>	<u>Latitude</u>	<u>Longitude</u>
PN 1-20	N 32 54 10	W 111 28 10	PN 1-23	N 32 54 00	W 111 28 20
PN 1-21	N 32 54 25	W 111 28 00	PN 1-24	N 32 53 50	W 111 28 20
PN 1-22	N 32 54 10	W 111 28 00			

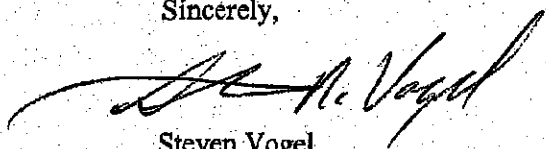
As the registered land applicator you are required to comply with all applicable provisions as established in A.A.C. Title 18, Chapter 9, Article 10, titled "Disposal, use, and Transportation of Biosolids", for each land application site. Your annual report is due on or before February 19 of the next year (A.A.C. R18-9-1014). Required forms and more information on land application of biosolids in Arizona can be found on the following site:
<http://www.azdeq.gov/function/forms/appswater.html#bio>.

Northern Regional Office
1801 W. Route 66 • Suite 117 • Flagstaff, AZ 86001
(928) 779-0313

Southern Regional Office
400 West Congress Street • Suite 433 • Tucson, AZ 85701
(520) 628-6733

Please contact me at (602) 771-4570 if you have questions regarding this Notice or the status of your registration.

Sincerely,

A handwritten signature in black ink, appearing to read "Steven Vogel", with a stylized flourish extending to the left.

Steven Vogel
Biosolids Review
Water Quality Compliance Assurance Unit

Ref #: AU11-095
LTF #: 53513



ARIZONA DEPARTMENT OF ENVIRONMENTAL QUALITY
Water Quality Compliance Section
1110 W. Washington Street, MO5415B-1
Phoenix, Arizona 85007
602-771-4612 (voicemail 602-771-4505 (fax))

**BIOSOLIDS LAND APPLICATION AND SUPPLEMENTAL REQUEST
FOR REGISTRATION****

APPLICATOR INFORMATION

Name of Company or Individuals: Solid Solutions, L.L.C. Telephone: 760-801-3175
Fax: 714-799-0140

Address: 12812 Valley View St, #9

City: Garden Grove State: CA Zip: 92845

Contact Person: Chris Marks ****Email: chrisamarks@comcast.net

NPDES Permit # (if applicable) Other Permits: Specify #

Are you an: ☐ Individual or ☒ Corporation/Association/Labor Union/Other Legal Entity

GENERATOR/PREPARER OF BIOSOLIDS

FACILITY TYPE ☒ WWTP ☐ COMPOSTER ☐ BIOSOLIDS PROCESSING ☐ PUBLIC/PRIVATE

Name of Company/Individuals: City of Mesa - GWRP Telephone: 480-644-6014

Address: 4400 S. Greenfield Road

City: Gilbert State: AZ City: Gilbert

Contact Person: Ronnie Lopez Telephone: 480-644-6014

NPDES #: (if applicable) AZ0024031 State Equivalent Specify #:

Pathogen Treatment Alternative ☐ Class A - Alternative # ☒ Class B - Alternative # 5

Vector Treatment Method: Option 1 Check here if you produce EQB. ☐ EQB

BIOSOLIDS METAL CONTENT IN Mg/Kg ON DRY WEIGHT BASIS (attach analytical report)

As = ND	Cd = ND	Cr = 36	Cu = 350	Pb = ND
Hg = 0.67	Mo = 16	Ni = 19	Se = ND	Zn = 780

NAME OF LABORATORY UTILIZED: Test America, Phoenix

DATE AND NUMBER OF MOST RECENT SAMPLES: 4/7/10

**ADEQ review of your application is subject to Licensing time frames (LTF) statute under A.R.S.

41-2072 through 41-1079 and the licensing time frames rules under A.A.C. R18-1-501 through R18-1-525. The review time is 15 days.

NOTE TO APPLICATORS:

- A person shall not apply bulk biosolids to the land if the biosolids are likely to adversely affect a threatened or endangered species as listed under section 4 of the Endangered Species Act (16 U.S.C 1533), or its designated critical habitat defined in 16 U.S.C. 1532. ADEQ encourages applicators to inquire with the U.S. Fish and Wildlife Service to determine if the proposed application may have an adverse affect.
- Applicators should contact the Arizona State Parks Board to confirm that biosolids land application activities at a specific site do not adversely effect "historic properties."

SITE SPECIFIC INFORMATION FOR APPLICATION SITE (complete for each site)			
Name of Company or Individuals: RPT Farms		Telephone: 520-251-0446	
Address: PO Box 824			
City: Coolidge		State: AZ	Zip: 85128
Contact Person: Mark Poe		Telephone: 520-251-0446	
Site Location			
Cross streets/landmarks: Northwest and Southwest of intersection of Randolph Rd and N Eleven Mile Corner			
Directions			
To Site: From I-10 S, Take W McCartney Rd East, right on N Signal Rd, left on East on Randolph Rd			
Nearest City or Town: Coolidge		County: Pinal	
Description of Site:			
<input type="checkbox"/> Reclamation Site <input checked="" type="checkbox"/> Farm			
<input type="checkbox"/> Other: includes composting site or biosolids processing site			
Township: 6S		Range: 8E	Section: 6,7
Total Acres: 727		Depth to Groundwater: 100+ ft	
Field ID: PN 2-1	Latitude: 32 56' 05"N	Longitude: 111 33' 50" W	No. of Acres: 32.8
Field ID: PN 2-2	Latitude: 32 56' 05"N	Longitude: 111 33' 40" W	No. of Acres: 35.2
Field ID: PN 2-3	Latitude: 32 56' 05"N	Longitude: 111 33' 20" W	No. of Acres: 33.8
Field ID: PN 2-4	Latitude: 32 55' 55"N	Longitude: 111 33' 50" W	No. of Acres: 72.1
Field ID: PN 2-5	Latitude: 32 55' 55"N	Longitude: 111 33' 20" W	No. of Acres: 23.5
SOIL METAL CONTENT IN Mg/Kg ON DRY WEIGHT BASIS			
*Soil analysis is only required if site had previously received biosolids and sludge application records are not available.			
* Attach soil analysis, if required above	As =	Cd =	Cu = Pb =
	Hg =	Ni =	Se = Zn =
SLOPE: Check the applicable condition:	<input checked="" type="checkbox"/> None of the fields have a slope greater than 6%.		
	<input type="checkbox"/> The slope is greater than 6% on part of the site, biosolids will not be applied to that portion.		
	<input type="checkbox"/> The slope is greater than 6% and NPDES Permit No. applies to the site.		
PUBLIC NOTICE: 2 weeks required		<input type="checkbox"/> Proof of Public Notice with the Request for Registration is attached	
I CERTIFY THAT THE ABOVE INFORMATION IS COMPLETE AND TRUE TO THE BEST OF MY KNOWLEDGE.			
SIGNATURE		TITLE	DATE

ADDITIONAL FIELDS

Field ID: PN 2-6	Latitude: 32 55' 45"N	Longitude: 111 33' 40" W	No. of Acres: 23.2
Field ID: PN 2-7	Latitude: 32 55' 35"N	Longitude: 111 33' 50" W	No. of Acres: 27.3
Field ID: PN 2-8	Latitude: 32 55' 25"N	Longitude: 111 33' 50" W	No. of Acres: 16
Field ID: PN 2-9	Latitude: 32 55' 35"N	Longitude: 111 33' 40" W	No. of Acres: 46
Field ID: PN 2-10	Latitude: 32 55' 15"N	Longitude: 111 33' 50" W	No. of Acres: 33.3
Field ID: PN 2-11	Latitude: 32 55' 15"N	Longitude: 111 33' 40" W	No. of Acres: 33.5
Field ID: PN 2-12	Latitude: 32 55' 05"N	Longitude: 111 33' 50" W	No. of Acres: 34.5
Field ID: PN 2-13	Latitude: 32 55' 05"N	Longitude: 111 33' 40" W	No. of Acres: 37.2
Field ID: PN 2-14	Latitude: 32 56' 05"N	Longitude: 111 33' 20" W	No. of Acres: 78
Field ID: PN 2-15	Latitude: 32 56' 15"N	Longitude: 111 33' 10" W	No. of Acres: 30.2
Field ID: PN 2-16	Latitude: 32 55' 05"N	Longitude: 111 33' 10" W	No. of Acres: 38.8
Field ID: PN 2-17	Latitude: 32 54' 55"N	Longitude: 111 33' 20" W	No. of Acres: 39.9
Field ID: PN 2-18	Latitude: 32 54' 55"N	Longitude: 111 33' 10" W	No. of Acres: 32.1
Field ID: PN 2-19	Latitude: 32 54' 40"N	Longitude: 111 33' 20" W	No. of Acres: 33
Field ID: PN 2-20	Latitude: 32 54' 40"N	Longitude: 111 33' 10" W	No. of Acres: 17.1
Field ID: PN 2-21	Latitude: 32 54' 35"N	Longitude: 111 33' 10" W	No. of Acres: 9.1



Douglas A. Ducey
Governor

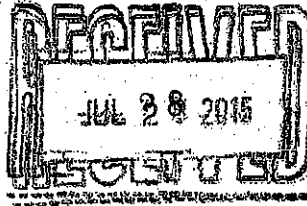
ARIZONA DEPARTMENT OF ENVIRONMENTAL QUALITY



Henry R. Darwin
Director

Notice of Acceptance - Biosolids Application Registration

July 20, 2015



Mr. Chris Marks
Solid Solutions, LLC
12812 Valley View Street, #9
Garden Grove, CA 92845

Re: Land Application Site Registration for RPT Farms located at Township 6S, Range 8E, Section 6, 7 in Pinal County

Dear Mr. Marks:

The Arizona Department of Environmental Quality (ADEQ) received the above referenced request for registration on July 16, 2015. Upon reviewing this material, ADEQ has determined under A.A.C R18-9-1004 that your submittal is complete. Your registration is accepted. Please be advised that this registration is valid only for biosolids generated by City of Mesa - NMWRP and City of Mesa - GWRP; to be land applied on the named fields at the following coordinates:

Field ID	Latitude	Longitude	Total Acres	Township /Range / Section
PN 2-1	32 56' 05"N	111 33' 50"W	32.8	T: 6S R: 8E S: 6,7
PN 2-2	32 56' 05"N	111 33' 40"W	35.2	T: 6S R: 8E S: 6,7
PN 2-3	32 56' 05"N	111 33' 20"W	33.8	T: 6S R: 8E S: 6,7
PN 2-4	32 55' 55"N	111 33' 50"W	72.1	T: 6S R: 8E S: 6,7
PN 2-5	32 55' 55"N	111 33' 20"W	23.5	T: 6S R: 8E S: 6,7
PN 2-6	32 55' 45"N	111 33' 40"W	23.2	T: 6S R: 8E S: 6,7
PN 2-7	32 55' 35"N	111 33' 50"W	27.3	T: 6S R: 8E S: 6,7
PN 2-8	32 55' 25"N	111 33' 50"W	16	T: 6S R: 8E S: 6,7
PN 2-9	32 55' 35"N	111 33' 40"W	46	T: 6S R: 8E S: 6,7
PN 2-10	32 55' 15"N	111 33' 50"W	33.3	T: 6S R: 8E S: 6,7
PN 2-11	32 55' 15"N	111 33' 40"W	33.5	T: 6S R: 8E S: 6,7
PN 2-12	32 55' 05"N	111 33' 50"W	34.5	T: 6S R: 8E S: 6,7
PN 2-13	32 55' 05"N	111 33' 40"W	37.2	T: 6S R: 8E S: 6,7
PN 2-14	32 56' 05"N	111 33' 20"W	78	T: 6S R: 8E S: 6,7
PN 2-15	32 56' 15"N	111 33' 10"W	30.2	T: 6S R: 8E S: 6,7
PN 2-16	32 55' 05"N	111 33' 10"W	38.8	T: 6S R: 8E S: 6,7
PN 2-17	32 54' 55"N	111 33' 20"W	39.9	T: 6S R: 8E S: 6,7
PN 2-18	32 54' 55"N	111 33' 10"W	32.1	T: 6S R: 8E S: 6,7
PN 2-19	32 54' 40"N	111 33' 20"W	33	T: 6S R: 8E S: 6,7
PN 2-20	32 54' 40"N	111 33' 10"W	17.1	T: 6S R: 8E S: 6,7
PN 2-21	32 54' 35"N	111 33' 10"W	9.1	T: 6S R: 8E S: 6,7

Main Office
1110 West Washington Street • Phoenix, AZ 85007
(602) 771-2300

Southern Regional Office
400 West Congress Street • Suite 433 • Tucson, AZ 85701
(520) 628-6733

www.azdeq.gov
printed on recycled paper

As the registered land applicator you are required to comply with all applicable provisions as established in **A.A.C. Title 18, Chapter 9, Article 10**, titled "Disposal, use, and Transportation of Biosolids", for each land application site.

Your annual report is due on or before February 19 of the next year (**A.A.C. R18-9-1014**). Required forms and more information on land application of biosolids in Arizona can be found on the following site: <http://www.azdeq.gov/function/forms/appswater.html#bio>.

Sincerely,



Danese Cameron, Administrative Assistant III
Water Quality Director's Office

Cc: RPT Farms, Mark Poe, PO Box 824, Coolidge, AZ 85128
City of Mesa - NMWRP, Ronnie Lopez, 960 N. Riverview Road, Mesa, AZ 85201
City of Mesa - GWRP, Ronnie Lopez, 4400 S. Greenfield Road, Gilbert, AZ 85297



ARIZONA DEPARTMENT OF ENVIRONMENTAL QUALITY
Water Quality Compliance Section
1110 W. Washington Street, MO5415B-1
Phoenix, Arizona 85007
602-771-4612 (voicemail 602-771-4505 (fax))

**BIOSOLIDS LAND APPLICATION AND SUPPLEMENTAL REQUEST
FOR REGISTRATION****

APPLICATOR INFORMATION

Name of Company
or Individuals: Solid Solutions, L.L.C.

Telephone: 760-801-3175
Fax: 714-799-0140

Address: 3031 Franklin Ave

City: Riverside

State: CA Zip: 92507

Contact Person: Chris Marks

****Email: chrisamarks@comcast.net

NPDES Permit # (if applicable)

Other Permits: Specify #

Are you an: ☐ Individual or ☒ Corporation/Association/Labor Union/Other Legal Entity

GENERATOR/PREPARER OF BIOSOLIDS

FACILITY TYPE

☒ WWTP

☐ COMPOSTER

☐ BIOSOLIDS PROCESSING

☐ PUBLIC/PRIVATE

Name of Company/Individuals: City of Mesa - NMWRP

Telephone: 480-644-6014

Address: 960 N. Riverview Road

City: Mesa

State: AZ Zip: 85201

Contact Person: Ronnie Lopez

Telephone: 480-644-6014

NPDES #:
(if applicable) AZ0024031

State Equivalent
Specify #:

Pathogen Treatment Alternative ☐ Class A - Alternative # _____ ☒ Class B - Alternative # 5

Vector Treatment Method: Option 1 Check here if you produce EQB. ☐ EQB

BIOSOLIDS METAL CONTENT IN Mg/Kg ON DRY WEIGHT BASIS (attach analytical report)

As = 17.7

Cd = ND

Cr = 74.6

Cu = 459

Pb = 5.72

Hg = 0.461

Mo = 14.6

Ni = 29.9

Se = ND

Zn = 673

NAME OF LABORATORY UTILIZED: City of Mesa Compliance Laboratory

DATE AND NUMBER OF MOST RECENT SAMPLES: 11/6/2018

**ADEQ review of your application is subject to Licensing time frames (LTF) statute under A.R.S. 41-2072 through 41-1079 and the licensing time frames rules under A.A.C. R18-1-501 through R18-1-525. The review time is 15 days.

NOTE TO APPLICATORS:

- A person shall not apply bulk biosolids to the land if the biosolids are likely to adversely affect a threatened or endangered species as listed under section 4 of the Endangered Species Act (16 U.S.C 1553), or its designated critical habitat defined in 16 U.S.C. 1532. ADEQ encourages applicators to inquire with the U.S. Fish and Wildlife Service to determine if the proposed application may have an adverse affect.
- Applicators should contact the Arizona State Parks Board to confirm that biosolids land application activities at a specific site do not adversely effect "historic properties."



ARIZONA DEPARTMENT OF ENVIRONMENTAL QUALITY
Water Quality Compliance Section
1110 W. Washington Street, MO5415B-1
Phoenix, Arizona 85007
602-771-4612 (voicemail 602-771-4505 (fax))

**BIOSOLIDS LAND APPLICATION AND SUPPLEMENTAL REQUEST
FOR REGISTRATION****

APPLICATOR INFORMATION

Name of Company or Individuals: Solid Solutions, L.L.C. Telephone: 760-801-3175
Fax: 714-799-0140

Address: 3031 Franklin Ave

City: Riverside State: CA Zip: 92507

Contact Person: Chris Marks ****Email: chrisamarks@comcast.net

NPDES Permit # (if applicable) Other Permits: Specify #

Are you an: ☐ Individual or ☒ Corporation/Association/Labor Union/Other Legal Entity

GENERATOR/PREPARER OF BIOSOLIDS

FACILITY TYPE ☒ WWTP ☐ COMPOSTER ☐ BIOSOLIDS PROCESSING ☐ PUBLIC/PRIVATE

Name of Company/Individuals: City of Mesa - GWRP Telephone: 480-644-6014

Address: 4400 S. Greenfield Road

City: Gilbert State: AZ City: Gilbert

Contact Person: Ronnie Lopez Telephone: 480-644-6014

NPDES #: (if applicable) AZ0024031 State Equivalent Specify #:

Pathogen Treatment Alternative ☐ Class A - Alternative # ☒ Class B - Alternative # 5

Vector Treatment Method: Option 1 Check here if you produce EQB. ☐ EQB

BIOSOLIDS METAL CONTENT IN Mg/Kg ON DRY WEIGHT BASIS (attach analytical report)

As = 12.4	Cd = ND	Cr = 50.2	Cu = 318	Pb = ND
Hg = 0.524	Mo = 13.7	Ni = 27.1	Se = ND	Zn = 784

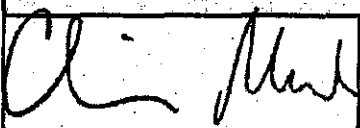
NAME OF LABORATORY UTILIZED: City of Mesa Compliance Laboratory

DATE AND NUMBER OF MOST RECENT SAMPLES: 11/06/2018

**ADEQ review of your application is subject to Licensing time frames (LTF) statute under A.R.S. 41-2072 through 41-1079 and the licensing time frames rules under A.A.C. R18-1-501 through R18-1-525. The review time is 15 days.

NOTE TO APPLICATORS:

- A person shall not apply bulk biosolids to the land if the biosolids are likely to adversely affect a threatened or endangered species as listed under section 4 of the Endangered Species Act (16 U.S.C 1553), or its designated critical habitat defined in 16 U.S.C. 1532. ADEQ encourages applicants to inquire with the U.S. Fish and Wildlife Service to determine if the proposed application may have an adverse affect.
- Applicants should contact the Arizona State Parks Board to confirm that biosolids land application activities at a specific site do not adversely effect "historic properties."

SITE SPECIFIC INFORMATION FOR APPLICATION SITE (complete for each site)			
Name of Company or Individuals: RPT Farms		Telephone: 520-251-0446	
Address: PO Box 824			
City: Coolidge		State: AZ	Zip: 85128
Contact Person: Mark Poe		Telephone: 520-251-0446	
Site Location Cross streets/landmarks: Northwest and Southwest of intersection of Randolph Rd and N Eleven Mile Corner			
Directions To Site: : From I-10 S, Take W McCartney Rd East, right on N Signal Rd, left on East on Randolph Rd			
Nearest City or Town Coolidge		County: Pinal	
Description of Site: <input type="checkbox"/> Reclamation Site <input checked="" type="checkbox"/> Farm <input type="checkbox"/> Other: _____ includes composting site or biosolids processing site			
Township: 6S		Range: 8E	Section: 5
Total Acres: 115.3		Depth to Groundwater: 100+ ft	
Field ID: PN 2-23	Latitude: 32 55' 52"N	Longitude: 111 32' 53" W	No. of Acres: 39.3
Field ID: PN 2-24	Latitude: 32 55' 56"N	Longitude: 111 32' 39" W	No. of Acres: 37.5
Field ID: PN 2-25	Latitude: 32 55' 46"N	Longitude: 111 32' 38" W	No. of Acres: 38.5
SOIL METAL CONTENT IN Mg/Kg ON DRY WEIGHT BASIS *Soil analysis is only required if site had previously received biosolids and sludge application records are not available.			
* Attach soil analysis, if required above	As =	Cd =	Cu =
	Hg =	Ni =	Se =
SLOPE: Check the applicable condition:	<input checked="" type="checkbox"/> None of the fields have a slope greater than 6%.		
	<input type="checkbox"/> The slope is greater than 6% on part of the site, biosolids will not be applied to that portion.		
	<input type="checkbox"/> The slope is greater than 6% and NPDES Permit No. _____ applies to the site.		
PUBLIC NOTICE: 2 weeks required		<input type="checkbox"/> Proof of Public Notice with the Request for Registration is attached	
I CERTIFY THAT THE ABOVE INFORMATION IS COMPLETE AND TRUE TO THE BEST OF MY KNOWLEDGE.			
 SIGNATURE		Manager TITLE	03/04/19 DATE



Douglas A. Ducey
Governor

ARIZONA DEPARTMENT OF ENVIRONMENTAL QUALITY



Misael Cabrera
Director

Via Certified Mail
March 14, 2019

Reading file: SWP19:0110

Notice of Acceptance - Biosolids Application Registration

Solid Solutions LLC
Attention: Mr. Chris Marks
3031 Franklin Avenue
Riverside, CA 92507

Re: LTF #-75868; Land Application Site Registration for RPT Farms

Dear Mr. Mark:

The Arizona Department of Environmental Quality (ADEQ) received the above referenced request for registration March 5, 2019 with a minor correction received on March 7, 2019. Upon reviewing this material, ADEQ has determined under A.A.C. R18-9-1004 that your submittal is complete, and your registration has been accepted. Please be advised that this registration is valid only for biosolids generated by City of Mesa-NMWRP, and City of Mesa-GWRP; to be land applied on the above named field(s) at the following coordinates:

Township: 6 N		Range: 8 W		Section: 5	
Field#	Latitude	Longitude	Acres		
PN 2-23	32° 55' 52"	111° 32' 53"	39.3		
PN 2.24	32° 55' 56"	111° 32' 39"	37.5		
PN2-25	32° 55' 46"	111° 32' 38"	38.5		

As the registered land applicator you are required to comply with all applicable provisions as established in A.A.C. Title 18, Chapter 9, Article 10, titled "Disposal, use, and Transportation of Biosolids," for each land application site.

Please be advised that your annual report is due on or before February 19 of next year, and each subsequent year (A.A.C. R18-9-1014). Required forms and more information on land application of biosolids in Arizona can be found on the ADEQ website (www.azdeq.gov) by entering search terms, such as "Biosolids Annual Report Form", into the search bar in the upper right hand corner of your screen.

Thank you for your attention to AZPDES compliance. If you have any questions about this letter please contact me any time at (602) 771-4666 or by email francis.sondra@azdeq.gov.

Sincerely,

Sondra Francis, Project Manager Biosolids
AZPDES Surface Water Permits Unit
Surface Water Section, Water Quality Division

Main Office
1110 W. Washington Street • Phoenix, AZ 85007
(602) 771-2300

Southern Regional Office
400 W. Congress Street • Suite 433 • Tucson, AZ 85701
(520) 628-6733

www.azdeq.gov
printed on recycled paper



ARIZONA DEPARTMENT OF ENVIRONMENTAL QUALITY
Water Quality Compliance Section
1110 W. Washington Street, MO5415B-1
Phoenix, Arizona 85007
602-771-4612 (voicemail 602-771-4505 (fax))

**BIOSOLIDS LAND APPLICATION AND SUPPLEMENTAL REQUEST
FOR REGISTRATION****

APPLICATOR INFORMATION

Name of Company or Individuals: Solid Solutions, L.L.C. Telephone: 760-801-3175
Fax: 714-799-0140

Address: 12340 Seal Beach Blvd., Suite # B-383

City: Seal Beach State: CA Zip: 90740

Contact Person: Chris Marks ****Email: cmarks@solidstech.com

NPDES Permit # (if applicable) Other Permits: Specify #

Are you an: ☐ Individual or ☒ Corporation/Association/Labor Union/Other Legal Entity

GENERATOR/PREPARER OF BIOSOLIDS

FACILITY TYPE ☒ WWTP ☐ COMPOSTER ☐ BIOSOLIDS PROCESSING ☐ PUBLIC/PRIVATE

Name of Company/Individuals: City of Mesa - GWRP Telephone: 480-644-6014

Address: 4400 S. Greenfield Road

City: Gilbert State: AZ Zip: 85296

Contact Person: Ronnie Lopez Telephone: 480-644-6014

NPDES #: (if applicable) AZ0024031 State Equivalent Specify #:

Pathogen Treatment Alternative ☐ Class A - Alternative # _____ ☒ Class B - Alternative # 5

Vector Treatment Method: Option 1 Check here if you produce EQB. ☐ EQB

BIOSOLIDS METAL CONTENT IN Mg/Kg ON DRY WEIGHT BASIS (attach analytical report)

As = ND	Cd = ND	Cr = 64	Cu = 530	Pb = ND
Hg = 0.8	Mo = 19	Ni = 22	Se = ND	Zn = 860

NAME OF LABORATORY UTILIZED: Aerotech Environmental Laboratories

DATE AND NUMBER OF MOST RECENT SAMPLES: 8/16/2007

**ADEQ review of your application is subject to Licensing time frames (LTF) statute under A.R.S. 41-2072 through 41-1079 and the licensing time frames rules under A.A.C. R18-1-501 through R18-1-525. The review time is 15 days.

NOTE TO APPLICATORS:

- A person shall not apply bulk biosolids to the land if the biosolids are likely to adversely affect a threatened or endangered species as listed under section 4 of the Endangered Species Act (16 U.S.C 1553), or its designated critical habitat defined in 16 U.S.C. 1532. ADEQ encourages applicators to inquire with the U.S. Fish and Wildlife Service to determine if the proposed application may have an adverse affect.
- Applicators should contact the Arizona State Parks Board to confirm that biosolids land application activities at a specific site do not adversely effect "historic properties."

SITE SPECIFIC INFORMATION FOR APPLICATION SITE (complete for each site)			
Name of Company or Individuals: Arlington Valley Farms		Telephone: 602-670-1122	
Address: P.O. Box 10			
City: Arlington		State: AZ	City: Arlington
Contact Person: Gary Gable		Telephone: 602-670-1122	
Site Location			
Cross streets/landmarks: Arlington Rd. & 331 st Ave. near Old U.S. 80 and South of Arlington Canal			
Directions			
To Site: I-10, Exit 103/339 th Ave & continue South, Salome Hwy Southeast, turn onto Old U.S. 80 then head Southwest, ~ 7 miles on southside of Hwy			
Nearest City or Town: Arlington		County: Maricopa	
Description of Site:			
<input type="checkbox"/> Reclamation Site <input checked="" type="checkbox"/> Farm <input type="checkbox"/> Other: _____ includes composting site or biosolids processing site			
Township: 1S		Range: 5W	Section: 4,5,7,8,20,21,22,26,27,29
Total Acres: 1,263.1		Depth to Groundwater: 25 ft	
Field ID: MA 1-1	Latitude: 33° 16' 52"N	Longitude: 112° 47' 12"W	No. of Acres: 70.6
Field ID: MA 1-2	Latitude: 33° 17' 17"N	Longitude: 112° 47' 37"W	No. of Acres: 105.6
Field ID: MA 1-3	Latitude: 33° 17' 17"N	Longitude: 112° 47' 13"W	No. of Acres: 52.3
Field ID: MA 1-4	Latitude: 33° 17' 17"N	Longitude: 112° 46' 58"W	No. of Acres: 41.6
Field ID: MA 1-5	Latitude: 33° 17' 02"N	Longitude: 112° 47' 00"W	No. of Acres: 35.3
SOIL METAL CONTENT IN Mg/Kg ON DRY WEIGHT BASIS			
*Soil analysis is only required if site had previously received biosolids and sludge application records are not available.			
* Attach soil analysis, if required above	As =	Cd =	Cu = Pb =
	Hg =	Ni =	Se = Zn =
SLOPE: Check the applicable condition:	<input checked="" type="checkbox"/> None of the fields have a slope greater than 6%.		
	<input type="checkbox"/> The slope is greater than 6% on part of the site, biosolids will not be applied to that portion.		
	<input type="checkbox"/> The slope is greater than 6% and NPDES Permit No. _____ applies to the site.		
PUBLIC NOTICE: 2 weeks required		<input type="checkbox"/> Proof of Public Notice with the Request for Registration is attached	
I CERTIFY THAT THE ABOVE INFORMATION IS COMPLETE AND TRUE TO THE BEST OF MY KNOWLEDGE.			
SIGNATURE		TITLE	DATE

ADDITIONAL FIELDS

Field ID: MA 1-6	Latitude: 33° 16' 24"N	Longitude: 112° 48' 01"W	No. of Acres: 53.4
Field ID: MA 1-7	Latitude: 33° 16' 11"N	Longitude: 112° 48' 00"W	No. of Acres: 27.0
Field ID: MA 1-8	Latitude: 33° 16' 46"N	Longitude: 112° 47' 36"W	No. of Acres: 67.7
Field ID: MA 1-9	Latitude: 33° 16' 33"N	Longitude: 112° 47' 13"W	No. of Acres: 35.6
Field ID: MA 1-10	Latitude: 33° 16' 37"N	Longitude: 112° 46' 57"W	No. of Acres: 40.7
Field ID: MA 1-11	Latitude: 33° 16' 24"N	Longitude: 112° 46' 57"W	No. of Acres: 40.8
Field ID: MA 1-12a	Latitude: 33° 14' 40"N	Longitude: 112° 46' 77"W	No. of Acres: 47.0
Field ID: MA 1-12b	Latitude: 33° 14' 35"N	Longitude: 112° 46' 76"W	No. of Acres: 53.0
Field ID: MA 1-P1	Latitude: 33° 19' 04"N	Longitude: 112° 45' 49"W	No. of Acres: 28.7
Field ID: MA 1-P2	Latitude: 33° 18' 50"N	Longitude: 112° 45' 46"W	No. of Acres: 29.6
Field ID: MA 1-P3	Latitude: 33° 18' 55"N	Longitude: 112° 45' 43"W	No. of Acres: 43.9
Field ID: MA 1-P4	Latitude: 33° 19' 04"N	Longitude: 112° 45' 17"W	No. of Acres: 48.5
Field ID: MA 1-P5	Latitude: 33° 18' 51"N	Longitude: 112° 45' 05"W	No. of Acres: 19.3
Field ID: MA 1-P6	Latitude: 33° 19' 07"N	Longitude: 112° 44' 54"W	No. of Acres: 20.1
Field ID: MA 1-P7	Latitude: 33° 16' 24"N	Longitude: 112° 48' 01"W	No. of Acres: 40.0
Field ID: MA 1-P8	Latitude: 33° 18' 05"N	Longitude: 112° 45' 04"W	No. of Acres: 30.0
Field ID: MA 1-P9	Latitude: 33° 18' 46"N	Longitude: 112° 45' 06"W	No. of Acres: 14.3
Field ID: MA 1-P10	Latitude: 33° 18' 04"N	Longitude: 112° 45' 28"W	No. of Acres: 5.7
Field ID: MA 1-P11	Latitude: 33° 45' 39"N	Longitude: 112° 18' 31"W	No. of Acres: 20.4
Field ID: MA 1-P12	Latitude: 33° 18' 30"N	Longitude: 112° 45' 47"W	No. of Acres: 11.0
Field ID: MA 1-H1	Latitude: 33° 18' 27"N	Longitude: 112° 47' 02"W	No. of Acres: 106.0
Field ID: MA 1-H2	Latitude: 33° 18' 22"N	Longitude: 112° 47' 21"W	No. of Acres: 15.0
Field ID: MA 1-C1	Latitude: 33° 19' 22"N	Longitude: 112° 45' 24"W	No. of Acres: 14.4
Field ID: MA 1-C2	Latitude: 33° 19' 12"N	Longitude: 112° 45' 02"W	No. of Acres: 10.4
Field ID: MA 1-C3	Latitude: 33° 19' 13"N	Longitude: 112° 49' 50"W	No. of Acres: 14.2
Field ID: MA 1-W1	Latitude: 33° 19' 03"N	Longitude: 112° 44' 41"W	No. of Acres: 29.0
Field ID: MA 1-W2	Latitude: 33° 18' 59"N	Longitude: 112° 44' 29"W	No. of Acres: 36.0
Field ID: MA 1-W3	Latitude: 33° 19' 03"N	Longitude: 112° 44' 16"W	No. of Acres: 31.0
Field ID: MA 1-W4	Latitude: 33° 19' 04"N	Longitude: 112° 43' 58"W	No. of Acres: 25.0



ARIZONA DEPARTMENT OF ENVIRONMENTAL QUALITY
Water Quality Compliance Section
1110 W. Washington Street, MO5415B-1
Phoenix, Arizona 85007
602-771-4612 (voicemail 602-771-4505 (fax))

**BIOSOLIDS LAND APPLICATION AND SUPPLEMENTAL REQUEST
FOR REGISTRATION****

APPLICATOR INFORMATION

Name of Company or Individuals: Solid Solutions, L.L.C. Telephone: 760-801-3175
Fax: 714-799-0140
Address: 12812 Valley View St, #9
City: Garden Grove State: CA Zip: 92845
Contact Person: Chris Marks ****Email: chrisamarks@comcast.net

NPDES Permit # (if applicable) Other Permits: Specify #

Are you an: ☐ Individual or ☒ Corporation/Association/Labor Union/Other Legal Entity

GENERATOR/PREPARER OF BIOSOLIDS

FACILITY TYPE ☒ WWTP ☐ COMPOSTER ☐ BIOSOLIDS PROCESSING ☐ PUBLIC/PRIVATE

Name of Company/Individuals: City of San Bernardino Telephone: 909-384-5510

Address: 399 Chandler Place

City: San Bernardino State: CA City: San Bernardino

Contact Person: Richard Casas Telephone: 909-384-5510

NPDES #: State Equivalent
(if applicable) Specify #:

Pathogen Treatment Alternative ☐ Class A - Alternative # ☒ Class B - Alternative # 5

Vector Treatment Method: Option 1 Check here if you produce EQB. ☐ EQB

BIOSOLIDS METAL CONTENT IN Mg/Kg ON DRY WEIGHT BASIS (attach analytical report)

As = 6.0	Cd = 1.0	Cr = 40	Cu = 491	Pb = 18
Hg = 1.2	Mo = 11	Ni = 16	Se = 1.0	Zn = 861

NAME OF LABORATORY UTILIZED: A&L Eastern Laboratories, Inc.

DATE AND NUMBER OF MOST RECENT SAMPLES: 4/20/11

**ADEQ review of your application is subject to Licensing time frames (LTF) statute under A.R.S. 41-2072 through 41-1079 and the licensing time frames rules under A.A.C. R18-1-501 through R18-1-525. The review time is 15 days.

NOTE TO APPLICATORS:

- A person shall not apply bulk biosolids to the land if the biosolids are likely to adversely affect a threatened or endangered species as listed under section 4 of the Endangered Species Act (16 U.S.C 1533), or its designated critical habitat defined in 16 U.S.C. 1532. ADEQ encourages applicators to inquire with the U.S. Fish and Wildlife Service to determine if the proposed application may have an adverse affect.
- Applicators should contact the Arizona State Parks Board to confirm that biosolids land application activities at a specific site do not adversely affect "historic properties."



ARIZONA DEPARTMENT OF ENVIRONMENTAL QUALITY
Water Quality Compliance Section
1110 W. Washington Street, MO5415B-1
Phoenix, Arizona 85007
602-771-4612 (voicemail 602-771-4505 (fax))

**BIOSOLIDS LAND APPLICATION AND SUPPLEMENTAL REQUEST
FOR REGISTRATION****

APPLICATOR INFORMATION

Name of Company or Individuals: Solid Solutions, L.L.C. Telephone: 760-801-3175
Fax: 714-799-0140

Address: 12812 Valley View St, #9

City: Garden Grove State: CA Zip: 92845

Contact Person: Chris Marks ****Email: chrisamarks@comcast.net

NPDES Permit # (if applicable) Other Permits: Specify #

Are you an: ☐ Individual or ☒ Corporation/Association/Labor Union/Other Legal Entity

GENERATOR/PREPARER OF BIOSOLIDS

FACILITY TYPE ☒ WWTP ☐ COMPOSTER ☐ BIOSOLIDS PROCESSING ☐ PUBLIC/PRIVATE

Name of Company/Individuals: City of Mesa - GWRP Telephone: 480-644-6014

Address: 4400 S. Greenfield Road

City: Gilbert State: AZ City: Gilbert

Contact Person: Ronnie Lopez Telephone: 480-644-6014

NPDES #: (if applicable) AZ0024031 State Equivalent Specify #:

Pathogen Treatment Alternative ☐ Class A - Alternative # ☒ Class B - Alternative # 5

Vector Treatment Method: Option 1 Check here if you produce EQB. ☐ EQB

BIOSOLIDS METAL CONTENT IN Mg/Kg ON DRY WEIGHT BASIS (attach analytical report)

As = ND	Cd = ND	Cr = 36	Cu = 350	Pb = ND
Hg = 0.67	Mo = 16	Ni = 19	Se = ND	Zn = 780

NAME OF LABORATORY UTILIZED: Test America, Phoenix

DATE AND NUMBER OF MOST RECENT SAMPLES: 4/7/10

**ADEQ review of your application is subject to Licensing time frames (LTF) statute under A.R.S. 41-2072 through 41-1079 and the licensing time frames rules under A.A.C. R18-1-501 through R18-1-525. The review time is 15 days.

NOTE TO APPLICATORS:

- A person shall not apply bulk biosolids to the land if the biosolids are likely to adversely affect a threatened or endangered species as listed under section 4 of the Endangered Species Act (16 U.S.C 1533), or its designated critical habitat defined in 16 U.S.C. 1532. ADEQ encourages applicators to inquire with the U.S. Fish and Wildlife Service to determine if the proposed application may have an adverse affect.
- Applicators should contact the Arizona State Parks Board to confirm that biosolids land application activities at a specific site do not adversely effect "historic properties."

**ARIZONA DEPARTMENT OF ENVIRONMENTAL QUALITY**

Water Quality Compliance Section
1110 W. Washington Street, MO5415B-1
Phoenix, Arizona 85007
602-771-4612 (voicemail 602-771-4505 (fax))

**BIOSOLIDS LAND APPLICATION AND SUPPLEMENTAL REQUEST
FOR REGISTRATION******APPLICATOR INFORMATION**

Name of Company or Individuals: Solid Solutions, L.L.C. Telephone: 760-801-3175
Fax: 714-799-0140

Address: 12340 Seal Beach Blvd., Suite # B-383

City: Seal Beach State: CA Zip: 90740

Contact Person: Chris Marks ****Email: cmarks@solidstech.com

NPDES Permit # (if applicable) Other Permits: Specify #

Are you an: ☐ Individual or ☒ Corporation/Association/Labor Union/Other Legal Entity

GENERATOR/PREPARER OF BIOSOLIDS

FACILITY TYPE ☒ WWTP ☐ COMPOSTER ☐ BIOSOLIDS PROCESSING ☐ PUBLIC/PRIVATE

Name of Company/Individuals: City of Mesa - NMWRP Telephone: 480-644-6014

Address: 960 N. Riverview Road

City: Mesa State: AZ Zip: 85201

Contact Person: Ronnie Lopez Telephone: 480-644-6014

NPDES #: (if applicable) AZ0024031 State Equivalent Specify #:

Pathogen Treatment Alternative ☐ Class A - Alternative # ☒ Class B - Alternative # 5

Vector Treatment Method: Option 1 Check here if you produce EQB. ☐ EQB

BIOSOLIDS METAL CONTENT IN Mg/Kg ON DRY WEIGHT BASIS (attach analytical report)

As = ND	Cd = ND	Cr = 86	Cu = 630	Pb = ND
Hg = 1.4	Mo = ND	Ni = 39	Se = ND	Zn = 950

NAME OF LABORATORY UTILIZED: City of Mesa Compliance Laboratory

DATE AND NUMBER OF MOST RECENT SAMPLES: 10/7/10

**ADEQ review of your application is subject to Licensing time frames (LTF) statute under A.R.S.

41-2072 through 41-1079 and the licensing time frames rules under A.A.C. R18-1-501 through R18-1-525. The review time is 15 days.

NOTE TO APPLICATORS:

- A person shall not apply bulk biosolids to the land if the biosolids are likely to adversely affect a threatened or endangered species as listed under section 4 of the Endangered Species Act (16 U.S.C 1553), or its designated critical habitat defined in 16 U.S.C. 1532. ADEQ encourages applicants to inquire with the U.S. Fish and Wildlife Service to determine if the proposed application may have an adverse affect.
- Applicants should contact the Arizona State Parks Board to confirm that biosolids land application activities at a specific site do not adversely effect "historic properties."

**ARIZONA DEPARTMENT OF ENVIRONMENTAL QUALITY**

Water Quality Compliance Section
1110 W. Washington Street, MO5415B-1
Phoenix, Arizona 85007
602-771-4612 (voicemail 602-771-4505 (fax))

**BIOSOLIDS LAND APPLICATION AND SUPPLEMENTAL REQUEST
FOR REGISTRATION******APPLICATOR INFORMATION**

Name of Company
or Individuals: Solid Solutions, L.L.C.

Telephone: 760-801-3175
Fax: 714-799-0140

Address: 12812 Valley View St, #9

City: Garden Grove

State: CA Zip: 92845

Contact Person: Chris Marks

****Email: chrisamarks@comcast.net

NPDES Permit # (if applicable)

Other Permits: Specify #

Are you an: ☐ Individual or ☒ Corporation/Association/Labor Union/Other Legal Entity

GENERATOR/PREPARER OF BIOSOLIDS

FACILITY TYPE

☒ WWTP

☐ COMPOSTER

☐ BIOSOLIDS PROCESSING

☐ PUBLIC/PRIVATE

Name of Company/Individuals: LACSD - Carson WWTP

Telephone: 562-699-7411

Address: 24501 S. Figueroa

City: Carson

State: CA

City: Carson

Contact Person: Matt Bao

Telephone: 562-699-7411

NPDES #:

(if applicable)

State Equivalent

Specify #:

Pathogen Treatment Alternative

☐ Class A - Alternative #

☒ Class B - Alternative # 5

Vector Treatment Method: Option 1

Check here if you produce EQB.

☐ EQB

BIOSOLIDS METAL CONTENT IN Mg/Kg ON DRY WEIGHT BASIS (attach analytical report)

As = 8.6

Cd = 6.7

Cr = 94

Cu = 390

Pb = 26

Hg = 1.0

Mo = 20

Ni = 50

Se = 19

Zn = 720

NAME OF LABORATORY UTILIZED: Test America, Irvine, CA

DATE AND NUMBER OF MOST RECENT SAMPLES: 10/5/10

**ADEQ review of your application is subject to Licensing time frames (LTF) statute under A.R.S.

41-2072 through 41-1079 and the licensing time frames rules under A.A.C. R18-1-501 through R18-1-525. The review time is 15 days.

NOTE TO APPLICATORS:

- A person shall not apply bulk biosolids to the land if the biosolids are likely to adversely affect a threatened or endangered species as listed under section 4 of the Endangered Species Act (16 U.S.C 1533), or its designated critical habitat defined in 16 U.S.C. 1532. ADEQ encourages applicators to inquire with the U.S. Fish and Wildlife Service to determine if the proposed application may have an adverse affect.
- Applicators should contact the Arizona State Parks Board to confirm that biosolids land application activities at a specific site do not adversely effect "historic properties."



ARIZONA DEPARTMENT OF ENVIRONMENTAL QUALITY
Water Quality Compliance Section
1110 W. Washington Street, MO5415B-1
Phoenix, Arizona 85007
602-771-4612 (voicemail 602-771-4505 (fax))

**BIOSOLIDS LAND APPLICATION AND SUPPLEMENTAL REQUEST
FOR REGISTRATION****

APPLICATOR INFORMATION

Name of Company or Individuals: Solid Solutions, L.L.C. Telephone: 760-801-3175
Fax: 714-799-0140

Address: 12812 Valley View St, #9

City: Garden Grove State: CA Zip: 92845

Contact Person: Chris Marks *****Email: chrisamarks@comcast.net

NPDES Permit # (if applicable) Other Permits: Specify #

Are you an: ☐ Individual or ☒ Corporation/Association/Labor Union/Other Legal Entity

GENERATOR/PREPARER OF BIOSOLIDS

FACILITY TYPE ☒ WWTP ☐ COMPOSTER ☐ BIOSOLIDS PROCESSING ☐ PUBLIC/PRIVATE

Name of Company/Individuals: City of Riverside Telephone: 909-351-6140

Address: 5950 Acorn St

City: Riverside State: CA City: Riverside

Contact Person: Bill Pounds Telephone: 909-351-6140

NPDES #: (if applicable) State Equivalent Specify #:

Pathogen Treatment Alternative ☐ Class A - Alternative # _____ ☒ Class B - Alternative # 5

Vector Treatment Method: Option 1 Check here if you produce EQB. ☐ EQB

BIOSOLIDS METAL CONTENT IN Mg/Kg ON DRY WEIGHT BASIS (attach analytical report)

As = 7.0	Cd = 2.0	Cr = 46	Cu = 870	Pb = 21
Hg = 1.5	Mo = 21	Ni = 23	Se = 5.0	Zn = 994

NAME OF LABORATORY UTILIZED: A&L Eastern

DATE AND NUMBER OF MOST RECENT SAMPLES: 10/29/10

**ADEQ review of your application is subject to Licensing time frames (LTF) statute under A.R.S.

41-2072 through 41-1079 and the licensing time frames rules under A.A.C. R18-1-501 through R18-1-525. The review time is 15 days.

NOTE TO APPLICATORS:

- A person shall not apply bulk biosolids to the land if the biosolids are likely to adversely affect a threatened or endangered species as listed under section 4 of the Endangered Species Act (16 U.S.C 1553), or its designated critical habitat defined in 16 U.S.C. 1532. ADEQ encourages applicators to inquire with the U.S. Fish and Wildlife Service to determine if the proposed application may have an adverse affect.
- Applicators should contact the Arizona State Parks Board to confirm that biosolids land application activities at a specific site do not adversely effect "historic properties."

SITE SPECIFIC INFORMATION FOR APPLICATION SITE (complete for each site)			
Name of Company or Individuals: Arlington Valley Farms		Telephone: 602-670-1122	
Address: P.O. Box 10			
City: Arlington		State: AZ	City: Arlington
Contact Person: Gary Gable		Telephone: 602-670-1122	
Site Location			
Cross streets/landmarks: Arlington Rd. & 331 st Ave. near Old U.S. 80 and South of Arlington Canal			
Directions			
To Site: I-10, Exit 112 to Hwy 85 South. Turn right onto Woods Rd. Turn right onto Old Hwy 80. Farm on the left.			
Nearest City or Town: Arlington		County: Maricopa	
Description of Site:			
<input type="checkbox"/> Reclamation Site <input checked="" type="checkbox"/> Farm <input type="checkbox"/> Other: _____ includes composting site or biosolids processing site			
Township: 3S		Range: 4W	Section: 20, 29, 32, 33
Total Acres: 987.7		Depth to Groundwater: 25 ft	
Field ID: MA 1-R11	Latitude: 33° 09' 20"N	Longitude: 112° 41' 30"W	No. of Acres: 79.8
Field ID: MA 1-R12	Latitude: 33° 09' 20"N	Longitude: 112° 41' 15"W	No. of Acres: 104.1
Field ID: MA 1-R13	Latitude: 33° 09' 05"N	Longitude: 112° 41' 15"W	No. of Acres: 10.3
Field ID: MA 1-R14	Latitude: 33° 09' 05"N	Longitude: 112° 41' 30"W	No. of Acres: 7.7
Field ID: MA 1-R15	Latitude: 33° 09' 05"N	Longitude: 112° 41' 40"W	No. of Acres: 29.3
SOIL METAL CONTENT IN Mg/Kg ON DRY WEIGHT BASIS			
*Soil analysis is only required if site had previously received biosolids and sludge application records are not available.			
* Attach soil analysis, if required above	As =	Cd =	Cu =
	Hg =	Ni =	Se =
SLOPE: Check the applicable condition:	<input checked="" type="checkbox"/> None of the fields have a slope greater than 6%.		
	<input type="checkbox"/> The slope is greater than 6% on part of the site, biosolids will not be applied to that portion.		
	<input type="checkbox"/> The slope is greater than 6% and NPDES Permit No. _____ applies to the site.		
PUBLIC NOTICE: 2 weeks required		<input type="checkbox"/> Proof of Public Notice with the Request for Registration is attached	
I CERTIFY THAT THE ABOVE INFORMATION IS COMPLETE AND TRUE TO THE BEST OF MY KNOWLEDGE.			
SIGNATURE		TITLE	DATE

ADDITIONAL FIELDS

Field ID: MA 1-R16N	Latitude: 33° 08' 55"N	Longitude: 112° 41' 15"W	No. of Acres: 46.8
Field ID: MA 1-R16S	Latitude: 33° 08' 35"N	Longitude: 112° 41' 15"W	No. of Acres: 75.9
Field ID: MA 1-R17N	Latitude: 33° 08' 55"N	Longitude: 112° 41' 30"W	No. of Acres: 40.6
Field ID: MA 1-R17S	Latitude: 33° 08' 35"N	Longitude: 112° 41' 30"W	No. of Acres: 68.2
Field ID: MA 1-R18	Latitude: 33° 08' 55"N	Longitude: 112° 41' 40"W	No. of Acres: 34.5
Field ID: MA 1-R19	Latitude: 33° 08' 45"N	Longitude: 112° 41' 40"W	No. of Acres: 34.3
Field ID: MA 1-R20	Latitude: 33° 08' 35"N	Longitude: 112° 41' 40"W	No. of Acres: 29.1
Field ID: MA 1-R21	Latitude: 33° 08' 30"N	Longitude: 112° 41' 40"W	No. of Acres: 18.3
Field ID: MA 1-R22	Latitude: 33° 08' 25"N	Longitude: 112° 41' 40"W	No. of Acres: 21.4
Field ID: MA 1-R23	Latitude: 33° 08' 15"N	Longitude: 112° 41' 20"W	No. of Acres: 30.1
Field ID: MA 1-R24	Latitude: 33° 08' 07"N	Longitude: 112° 41' 20"W	No. of Acres: 31.9
Field ID: MA 1-R25	Latitude: 33° 08' 07"N	Longitude: 112° 41' 30"W	No. of Acres: 9.9
Field ID: MA 1-R26	Latitude: 33° 08' 00"N	Longitude: 112° 41' 20"W	No. of Acres: 37.4
Field ID: MA 1-R27	Latitude: 33° 07' 55"N	Longitude: 112° 41' 20"W	No. of Acres: 41.8
Field ID: MA 1-R28	Latitude: 33° 07' 45"N	Longitude: 112° 41' 20"W	No. of Acres: 90.8
Field ID: MA 1-R29	Latitude: 33° 07' 35"N	Longitude: 112° 41' 20"W	No. of Acres: 67.6
Field ID: MA 1-R30	Latitude: 33° 07' 45"N	Longitude: 112° 41' 00"W	No. of Acres: 77.9



Janice K. Brewer
Governor

ARIZONA DEPARTMENT OF ENVIRONMENTAL QUALITY

1110 West Washington Street • Phoenix, Arizona 85007
(602) 771-2300 • www.azdeq.gov



Henry R. Darwin
Director

Notice of Acceptance Biosolids Application Registration

October 31, 2011

LTF: # 55067
Ref # AU12-088

Mr. Chris Marks
Solid Solutions, L.L.C.
12812 Valley View St, #9
Garden Grove, Ca. 92845

Re: Land Application Site Registration and Generators for Arlington Farms

Dear Mr. Marks:

The Arizona Department of Environmental Quality (ADEQ) received the above referenced request for registration on October 27, 2011. Upon reviewing this material, ADEQ has determined under **A.A.C R18-9-1004** that your submittal is complete. Your registration is accepted. Please be advised that this registration is valid only for biosolids generated by the City of Mesa - GWRP, City of Mesa - NMWRP, Carson WWTP (LACSD), City of Riverside WWTP and City of San Bernardino, to be land applied only at the fields that are now registered, with the following center field coordinates:

<u>Field ID</u>	<u>Latitude</u>	<u>Longitude</u>	<u>Field ID</u>	<u>Latitude</u>	<u>Longitude</u>
MA 1- R11	N 33 09 20	W 112 41 30	MA 1- R12	N 33 09 20	W 112 41 15
MA 1- R13	N 33 09 20	W 112 41 15	MA 1- R14	N 33 09 05	W 112 41 30
MA 1- R15	N 33 09 05	W 112 41 40	MA 1- R16N	N 33 08 55	W 112 41 15
MA 1- R16S	N 33 08 35	W 112 41 15	MA 1- R17N	N 33 08 55	W 112 41 30
MA 1- R17S	N 33 08 35	W 112 41 30	MA 1- R18	N 33 08 55	W 112 41 40
MA 1- R19	N 33 08 45	W 112 41 40	MA 1- R20	N 33 08 35	W 112 41 40
MA 1- R21	N 33 08 30	W 112 41 40	MA 1- R22	N 33 08 25	W 112 41 40
MA 1- R23	N 33 08 15	W 112 41 20	MA 1- R24	N 33 08 07	W 112 41 20
MA 1- R25	N 33 08 07	W 112 41 30	MA 1- R26	N 33 08 00	W 112 41 20
MA 1- R27	N 33 07 55	W 112 41 20	MA 1- R28	N 33 07 45	W 112 41 20
MA 1- R29	N 33 07 35	W 112 41 20	MA 1- R30	N 33 07 45	W 112 41 00

Southern Regional Office
400 West Congress Street • Suite 433 • Tucson, AZ 85701
(520) 628-6733

Printed on recycled paper

J Farms

- Denali falsely reports J Farms has a total of 700 acres available between 2 farms. (Denali's exhibit D)
 - The ADEQ registration form indicates 17 fields (517 acres approximately) located in Sections 10 and 11 Township 4 South Range 8 East.
 - Section 10 is 100% desert and has no cropland.
 - Section 11 is subdivisions and wastewater lagoons.

EXHIBIT D – Registered Land

If bidding on and awarded Group A or Group E for Land Application of Biosolids, Bidder must demonstrate the availability of a sufficient number of acres of land registered by the Bidder with the State of Arizona for the dedicated acceptance of all Pima County Biosolids. The availability of land registered must span the life of the Agreement. At the time of bid submission, Bidder must demonstrate land potentially available by providing discussions with potential landowners. Final contracts must be put in place and provided to the County within 30-days of notification of contract award but not later than fifteen (15) days prior to commencement of award.

Submit additional copies of this form and its attachments as necessary to document all available registered land available for use under any contract resulting from this solicitation.

1.	
Land Description including acreage	Two Farms totalling 700 acres operated by the same farmer in the Coolidge, AZ area J Farms
Land Address	Coolidge, Arizona
Land Owner	Jaime Shaw
Attached are the following document(s)	<input checked="" type="checkbox"/> DEQ request to register land for biosolids application <input checked="" type="checkbox"/> DEQ land registration document <input type="checkbox"/> Land owner consent to use land for biosolids application <input type="checkbox"/> Other – Specify _____

2.	
Land Description including acreage	Farm totalling 840 acres operated by farmer RPT Farms
Land Address	Coolidge, Arizona
Land Owner	Dale Andersen
Attached are the following document(s)	<input checked="" type="checkbox"/> DEQ request to register land for biosolids application <input checked="" type="checkbox"/> DEQ land registration document <input checked="" type="checkbox"/> Land owner consent to use land for biosolids application <input type="checkbox"/> Other – Specify _____

3.	
Land Description including acreage	Two farms totalling 2,250 acres farmed by the same farmer Arlington Farms
Land Address	Arlington, Arizona
Land Owner	Gary Gable
Attached are the following document(s)	<input checked="" type="checkbox"/> DEQ request to register land for biosolids application <input checked="" type="checkbox"/> DEQ land registration document <input type="checkbox"/> Land owner consent to use land for biosolids application <input type="checkbox"/> Other – Specify _____

J Farms

- Denali falsely reports J Farms has a total of 700 acres available between 2 farms. (Denali's exhibit D)
 - The ADEQ registration form indicates 17 fields (517 acres approximately) located in Sections 10 and 11 Township 4 South Range 8 East.
 - Section 10 is 100% desert and has no cropland.
 - Section 11 is subdivisions and wastewater lagoons.

EXHIBIT D – Registered Land

If bidding on and awarded Group A or Group E for Land Application of Biosolids, Bidder must demonstrate the availability of a sufficient number of acres of land registered by the Bidder with the State of Arizona for the dedicated acceptance of all Pima County Biosolids. The availability of land registered must span the life of the Agreement. At the time of bid submission, Bidder must demonstrate land potentially available by providing discussions with potential landowners. Final contracts must be put in place and provided to the County within 30-days of notification of contract award but not later than fifteen (15) days prior to commencement of award.

Submit additional copies of this form and its attachments as necessary to document all available registered land available for use under any contract resulting from this solicitation.

1.	
Land Description including acreage	Two Farms totalling 700 acres operated by the same farmer in the Coolidge, AZ area J Farms
Land Address	Coolidge, Arizona
Land Owner	Jaime Shaw
Attached are the following document(s)	<input checked="" type="checkbox"/> DEQ request to register land for biosolids application <input checked="" type="checkbox"/> DEQ land registration document <input type="checkbox"/> Land owner consent to use land for biosolids application <input type="checkbox"/> Other – Specify _____

2.	
Land Description including acreage	Farm totalling 840 acres operated by farmer RPT Farms
Land Address	Coolidge, Arizona
Land Owner	Dale Andersen
Attached are the following document(s)	<input checked="" type="checkbox"/> DEQ request to register land for biosolids application <input checked="" type="checkbox"/> DEQ land registration document <input checked="" type="checkbox"/> Land owner consent to use land for biosolids application <input type="checkbox"/> Other – Specify _____

3.	
Land Description including acreage	Two farms totalling 2,250 acres farmed by the same farmer Arlington Farms
Land Address	Arlington, Arizona
Land Owner	Gary Gable
Attached are the following document(s)	<input checked="" type="checkbox"/> DEQ request to register land for biosolids application <input checked="" type="checkbox"/> DEQ land registration document <input type="checkbox"/> Land owner consent to use land for biosolids application <input type="checkbox"/> Other – Specify _____

J Farms – Denali indicates on exhibit D that J Farms has a total of 700 acres available between 2 farms. The ADEQ registration form indicates 17 fields (517 acres approximately) located in Sections 10 and 11 Township 4 South Range 8 East.

Section 10 is 100% desert and has no cropland. Section 11 is subdivisions and wastewater lagoons.



408150010 X Q

Show search results for 40815...

Parcels:

Assessor Parcel Number
20024091A

First Owner Name
JOHNSON UTILITIES LLC

Second Owner Name

Property Address
5440 E HUNT HWY FLORENCE, AZ 85132

Mailing Address
5230 E SHEA BLVD STE 200

City
SCOTTSDALE

State
AZ

Zip
85254

Sub or Condo Name

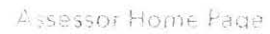
Property Description
REG @ THE NW COR OF SEC 11-04S-08E

[Zoom to](#)

Township 4 Range 8

Earthstar Geographics | Esri, HE

J Farms : Land is subdivisions and
wastewater lagoons



Show search results for 40815...

Zoom to

Earthstar Geographics | Esri, HE

J Farms Land is desert

0.6mi

ARLINGTON
FARMS

Arlington Farms

- Denali falsely reports Arlington Farms has 2,250 acres is available in 2 separate listings.

Listing 1

- Sections 4,5,7,8,20,21,22,26,27,29 Township 1 South Range 5 West (no maps were included).
 - According to Maricopa County Assessor maps, Sections 4, 5, 8, 20 are all desert land.
 - Section 22 is approximately 90% desert.
 - Section 7 and section 21 are subdivisions.
- Denali indicates land is owned by Gary Gable (Exhibit D).
 - County assessor maps show Cropland portions of Sections 22, 26, 27, and 29 (approximately 400 acres) are owned by Saddle Mountain Ranch LLC
 - Stat agents Bryn Elyse & Roemhildt Gordon

Listing 2

- The second listing includes approximately 600 acres.

The combined acreage from both listings is approximately 1,000 acres which is less than half of the amount falsely reported as available.

All of the land reported in Denali bid is currently only registered for the following generators:

1. City of Mesa, Arizona (2 locations)
2. Los Angeles California County Sanitation District
3. City of Riverside California
4. City of San Bernadino California
5. City of Gilbert, Arizona

Denali indicates Arlington Farms has 2,250 acres is available in 2 separate listings. The first includes Sections 4,5,7,8,20,21,22,26,27,29 Township 1 South Range 5 West (no maps were included). According to Maricopa County Assessor maps, Sections 4, 5, 8, 20 are all desert land. Section 22 is approximately 90% desert. Section 7 and section 21 are subdivisions.

Denali indicates land is owned by Gary Gable (Exhibit D). County assessor maps show Cropland portions of Sections 22, 26, 27, and 29 (approximately 400 acres) are owned by Saddle Mountain Ranch LLC indicating the agents as Bryn Elyse Roemhildt Gordon as the agent.

The second listing includes approximately 600 acres. The combined acreage from both listings is approximately 1,000 acres which is less than half of the amount indicated as available.

All of the land indicated in Denali bid is currently only registered for the following generators:

1. City of Mesa, Arizona (2 locations)
2. Los Angeles California County Sanitation District
3. City of Riverside California
4. City of San Bernadino California
5. City of Gilbert, Arizona

Entity Information

Search Date and Time:
12/13/2019 1:46:48 PM

Entity Details

	Entity Name:
SADDLE MOUNTAIN RANCH LLC	
	Entity ID:
L18715597	
	Entity Type:
Domestic LLC	
	Entity Status:
Active	
	Formation Date:
9/4/2013	
	Reason for Status:
In Good Standing	
	Approval Date:
9/6/2013	
	Status Date:
	Original Incorporation Date:
9/4/2013	
	Life Period:
Perpetual	
	Business Type:
	Last Annual Report Filed:
	Domicile State:
Arizona	
	Annual Report Due Date:
	Years Due:
	Original Publish Date:

Statutory Agent Information

Privacy Policy (<http://azcc.gov/privacy-policy>) | Contact Us (<http://azcc.gov/corporations/corporation-contacts>)

Name:

BRYN ELYSE ROEMHILDT GORDON

Appointed Status:

Active

Attention:

Address:

2745 E SADDLE MOUNTAIN RD , CAVE CREEK, AZ 85331, USA

Agent Last Updated:

9/6/2013

E-mail:

Attention:

Mailing Address:

County:

Principal Information

Title	Name	Attention	Address	Date of Taking Office	Last Updated
Member	BRYN ELYSE ROEMHILDT GORDON		2745 E SADDLE MOUNTAIN RD, CAVE CREEK, AZ, 85331, USA	9/4/2013	9/6/2013

Page 1 of 1, records 1 to 1 of 1

Entity Known Place of Business

Attention:

Address: 2745 E SADDLE MOUNTAIN RD, CAVE CREEK, AZ, 85331, USA

County: Maricopa

Last Updated: 9/5/2013

Entity Principal Office Address

Attention:

Address:

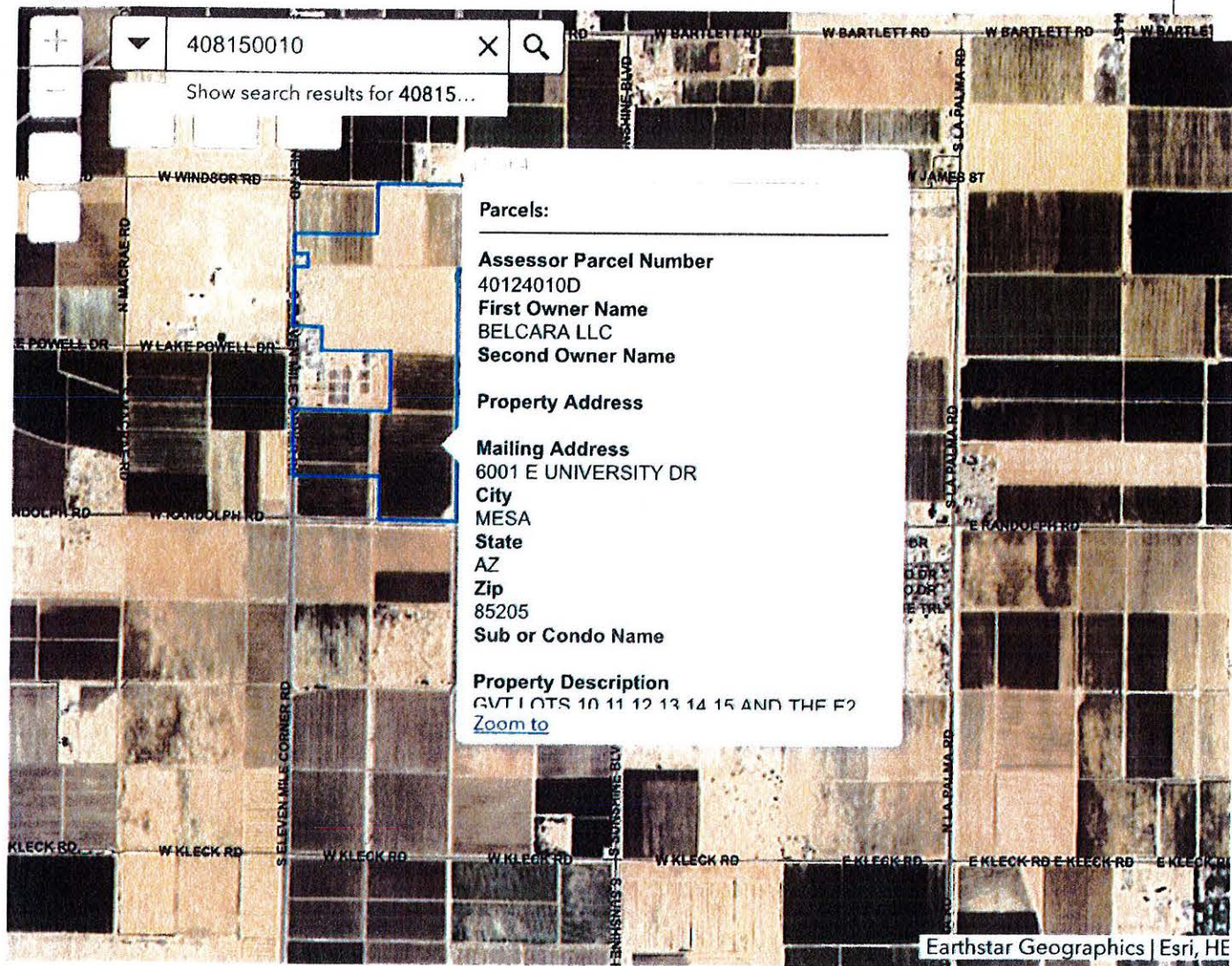
County:

Last Updated:

RPT Farms

- Denali falsely reports 840 acres available
- Denali falsely report landowner is Dale Anderson.
 - Pima Co Assessor maps shows land is owned by Belcara LLC, Eleven Mile Kleck LLLP, and RUC Holdings ULC.

RPT Farms – Denali indicates 840 acres available and landowner is Dale Anderson. Pina Co Assessor maps shows land is owned by Belcara LLC, Eleven Mile Kleck LLLP, and RUC Holdings ULC.



RPT Farms

0.6mi



+

408150010

X

Q

Show search results for 40815...

Parcels:

Assessor Parcel Number
40121018D

First Owner Name
BELCARA LLC

Second Owner Name

Property Address

Mailing Address
6001 E UNIVERSITY DR

City
MESA

State
AZ

Zip
85205

Sub or Condo Name

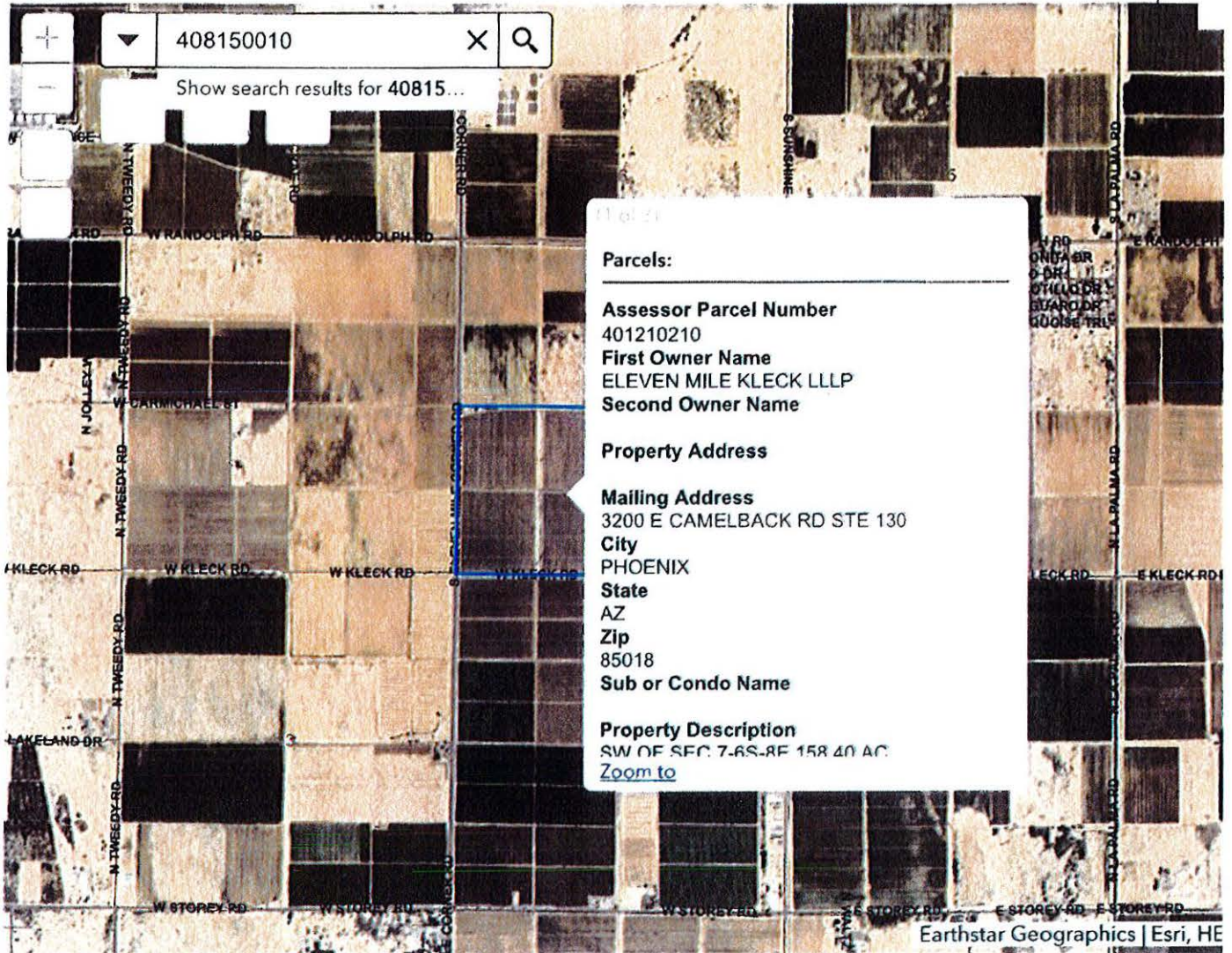
Property Description
COM @ THE NW COR OF SEC 7 6S 8E TH

[Zoom to](#)

Earthstar Geographics | Esri, HE

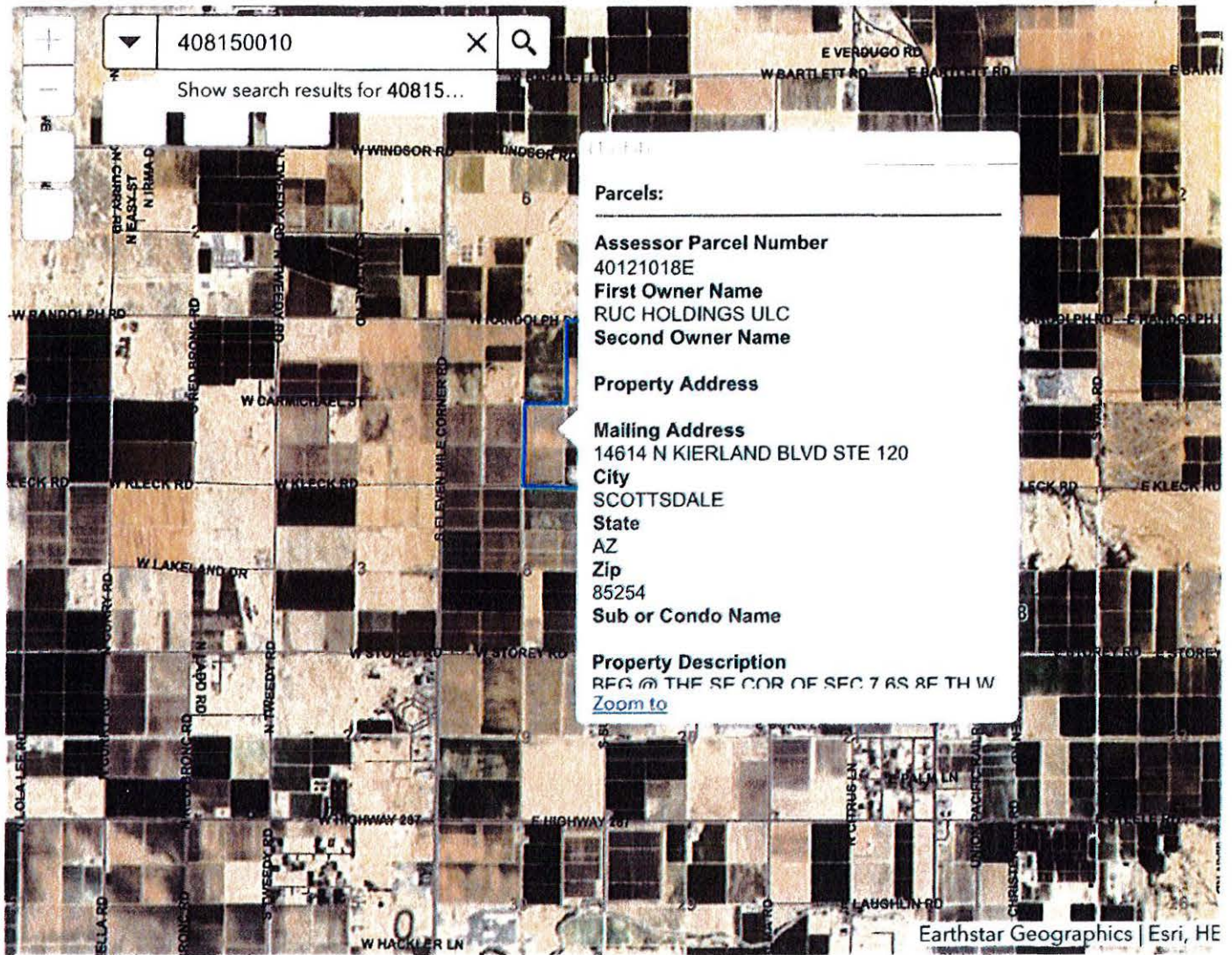
RPT Farms

0.6mi



RPT Farms

0.6mi



RPT Farms

Entity Information

Search Date and Time:
12/13/2019 11:34:58 AM

Entity Details

BELCARA LLC	Entity Name:
L15436702	Entity ID:
Domestic LLC	Entity Type:
Active	Entity Status:
8/4/2009	Formation Date:
In Good Standing	Reason for Status:
8/7/2009	Approval Date:
8/4/2009	Status Date:
	Original Incorporation Date:
Perpetual	Life Period:
	Business Type:
	Last Annual Report Filed:
Arizona	Domicile State:
	Annual Report Due Date:
	Years Due:
	Original Publish Date:

Statutory Agent Information

Privacy Policy (<http://azcc.gov/privacy-policy>) | Contact Us (<http://azcc.gov/corporations/corporation-contacts>)

Name:

DEAKMS LLC

Appointed Status:

Active

Attention:

Address:

6053 E UNIVERSITY DR , MESA, AZ 85205, USA

Agent Last Updated:

9/18/2009

E-mail:

Attention:

Mailing Address:

County:

Principal Information

Title	Name	Attention	Address	Date of Taking Office	Last Updated
Manager	LEON H RICKS		6001 EAST UNIVERSITY DR, MESA, AZ, 85205, USA	8/4/2009	8/7/2009
Member			LEON H & SYLVIA F RICKS FAMTRS 6001 EAST UNIVERSITY DR, MESA, AZ, 85205, USA	1/22/2013	2/4/2013

Page 1 of 1, records 1 to 2 of 2

Entity Known Place of Business

Attention:

Address: 6001 EAST UNIVERSITY DR, MESA, AZ, 85205, USA

County: Maricopa

Last Updated:

Entity Principal Office Address

Attention:

Address:

County:

Last Updated: <http://azcc.gov/privacy-policy> | [Contact Us \(http://azcc.gov/corporations/corporation-contacts\)](http://azcc.gov/corporations/corporation-contacts)

Entity Information

Search Date and Time:

12/13/2019 11:42:20 AM

Entity Details

ELEVEN MILE KLECK L.L.L.P

S6003614

Domestic Limited Liability Limited Partnership

Active

1/22/2015

1/22/2015

Perpetual

Entity Name:

Entity ID:

Entity Type:

Entity Status:

Formation Date:

Reason for Status:

Approval Date:

Status Date:

Original Incorporation Date:

Life Period:

Business Type:

Last Annual Report Filed:

Domicile State:

Annual Report Due Date:

Years Due:

Original Publish Date:

Statutory Agent Information

Name:

Appointed Status:

Privacy Policy (<http://azcc.gov/privacy-policy>) | Contact Us (<http://azcc.gov/corporations/corporation-contacts>)

Attention:

Address:

Agent Last Updated:

E-mail:

Attention:

Mailing Address:

County:

Principal Information

Title	Name	Attention	Address	Date of Taking Office	Last Updated
-------	------	-----------	---------	-----------------------	--------------

No records to view.

Entity Known Place of Business

Attention:

Address:

County:

Last Updated:

Entity Principal Office Address

Attention:

Address:

County:

Last Updated:

[Back](#)

[Return to Search](#)

[Return to Results](#)

[Document History](#)

[Name/Restructuring History](#)

[Pending Documents](#)

[Microfilm History](#)