



**PIMA COUNTY BOARD OF SUPERVISORS
DISTRICT 1**

130 WEST CONGRESS STREET, 11TH FLOOR
TUCSON, AZ 85701-1317

(520)724-2738

district1@pima.gov

www.district1.pima.gov

ALLY MILLER
SUPERVISOR

MEMORANDUM

To: Julie Castaneda, Clerk of the Board

Date: August 1, 2019

From: Ally Miller, District 1 Supervisor
Pima County Board of Supervisors

Re: Discussion and possible action related to Memorandum - July 11, 2019 - Operation Stonegarden Funds
Toward Humanitarian Aid Request to Support Catholic Community Services Central Casa Alitas and
Distributed Shelters for Asylum Seekers.

Please place the following item on the **August 6, 2019** Board of Supervisors **Addendum**:

**Discussion and possible action related to Memorandum - July 11, 2019 - Operation
Stonegarden Funds Toward Humanitarian Aid Request to Support Catholic Community
Services Central Casa Alitas and Distributed Shelters for Asylum Seekers.**

AUG 01 19M0845 PC CLK/FH
AFB



COUNTY ADMINISTRATOR'S OFFICE

PIMA COUNTY GOVERNMENTAL CENTER
130 W. CONGRESS, FLOOR 10, TUCSON, AZ 85701-1317
(520) 724-8661 FAX (520) 724-8171

C.H. HUCKELBERRY
County Administrator

July 11, 2019

Susan Dzbanko, Assistant Director
Planning and Preparedness
Arizona Department of Homeland Security
1700 W. Washington St. Suite 210
Phoenix, Arizona 85007

William D. Seltzer, Strategic Planner
Operation Stonegarden; South Region
Arizona Department of Homeland Security
1700 W. Washington St. Suite 210
Phoenix, Arizona 85007

Re: **Operation Stonegarden Funds Toward Humanitarian Aid Request to Support
Catholic Community Services Central Casa Alitas and Distributed Shelters for
Asylum Seekers**

Dear Ms. Dzbanko and Mr. Seltzer:

Pursuant to your June 27, 2019 email communication, please accept this detailed request for humanitarian aid.

On May 7, 2019, Pima County Board of Supervisors accepted the Federal Fiscal Year (FFY) 2018 Operation Stonegarden (OPSG) Grant Program Award (Subrecipient Agreement Number 180403-03; Project Title: "OPSG Overtime-Mileage") subject to a number of conditions. One of these conditions indicated that up to \$200,000 of the FFY 2018 OPSG grant to Pima County be used for humanitarian aid for asylum seekers, including unaccompanied children and families with children on the southwest United States border. Another condition required maximum recovery of indirect costs to also be used toward humanitarian aid for the same target population. The maximum indirect recovery amount for this grant award is calculated by Pima County as 28.58% of the personnel costs of the FFY 2018 OPSG grant or \$330,347¹. However, since Pima County has been informed by Arizona

¹ Pima County, Arizona is a non-Federal entity that receives less than \$35 million in direct Federal funding. Per 2 C.F.R. Appendix VII to Part 200 Uniform Requirements, Section D(1)(b), Pima County is therefore not required to submit its indirect cost rate proposal to its cognizant agency for indirect costs. Instead, the County is required to develop and maintain an indirect cost rate proposal per the requirements of 2 C.F.R. Appendix VII to Part 200 Uniform Requirements. Please note that Pima County's indirect cost rate proposal uses the simplified method with a base of salaries, wages, and fringe benefits. The indirect cost rate for the Pima County Sheriff's Department is 28.58%. In the above case, then, the calculus is: 28.58% of \$1,155,866 of overtime costs, or \$330,347.

Ms. Dzbanko and Mr. Seltzer

Re: **Operation Stonegarden Funds Toward Humanitarian Aid Request to Support Catholic Community Services Central Casa Alitas and Distributed Shelters for Asylum Seekers**

July 11, 2019

Page 2

Department of Homeland Security (AZDOHS) that indirect cost recovery will be difficult to operationalize with only five months remaining on the performance period of the grant, Pima County will forego the indirect cost recovery this award year, and, instead, seek to apply the \$330,347 amount that would have been recovered to the above-referenced \$200,000 amount. Therefore, the total modification amount Pima County requests for humanitarian aid is \$530,347.

This grant request conforms specifically to the Federal Emergency Management Agency Grant Programs Directorate Information Bulletin No. 436 issued on November 27, 2018.

As you know, by attending many of our monthly meetings with Immigration and Customs Enforcement (ICE) as well as the US Border Patrol, discussions regarding asylum seeker release to the community has been of significant interest as well as community concern. Our grant request is directed specifically to finance and provide humanitarian aid for the programs and purposes identified under Section III. Allowable Costs and Guidance of Grant Programs Directorate Information Bulletin No. 436.

Enclosed is the Arizona Department of Homeland Security OPSG Humanitarian Aid Modification Request Form (Humanitarian Aid Modification Request). (Attachment 1)

Catholic Community Services as Temporary Housing Facility Operator

The basis of our request for humanitarian aid is founded on the longstanding faith-based, nonprofit service relationship the County has with Catholic Community Services (CCS). This entity began providing humanitarian aid to asylum seekers in 2014 and has continued to provide these services without cost reimbursement until now. Unfortunately, the increased flow of asylum seekers has substantially increased in the volume of individuals released by either ICE or the US Border Patrol to CCS and other faith-based nonprofit organizations. Since 2014, CCS has accepted the major responsibility to provide shelter, food, transportation and medical care to asylum seekers.

The County has successfully partnered with CCS on a number of nonprofit community service activities benefitting our existing community; hence, it is both reasonable and appropriate the County collaborate with CCS in the provision of humanitarian aid to asylum seekers.

Recently, these services have been provided through a coordinated effort of CCS by using a central receiving location. This location, used for registration, intake, medical screening, temporary housing, clothing and travel arrangements, has been historically provided at the Benedictine Monastery. This facility will close on or before August 6, 2019, requiring a new central receiving area and temporary housing shelter to be developed. Hence, we find ourselves in a difficult position to keep both asylum seekers and the community safe.

Ms. Dzbanko and Mr. Seltzer

Re: **Operation Stonegarden Funds Toward Humanitarian Aid Request to Support Catholic Community Services Central Casa Alitas and Distributed Shelters for Asylum Seekers**

July 11, 2019

Page 3

On July 3, 2019 we received a request from the Bishop of Tucson, Most Reverend Edward J. Weisenburger (Attachment 2) requesting the use of our facilities to provide humanitarian aid and related services to asylum seekers after they reviewed dozens of potential sites.

Juvenile Justice Complex Selected as Substitute for the Benedictine Monastery

CCS has indicated that the County's vacant facilities at our Juvenile Justice Complex are appropriately suited to substitute for the Benedictine Monastery. For your information, I have enclosed a site diagram of the overall Juvenile Justice Complex as well as the units that can be utilized by CCS in providing asylum seeker transition and temporary housing services for up to 300 individuals and 50 volunteers per eight hour shift. (Attachment 3) The units selected are Units 700, 800 and 900 of our Complex, highlighted in Attachment 4. The CCS services flow chart is provided in Attachment 5. The County will annually lease this facility to CCS, a faith-based nonprofit, at a nominal annual cost of \$100 per year, with up to four one-year renewal options.

To accommodate the established and successful humanitarian services of CCS, minor facility modifications of our Juvenile Justice Complex will be required. These modifications will be made by the County and we will request some reimbursement of these costs through the Humanitarian Aid Processing Request.

Grant to Reimburse Minor Facility Modifications

Because the County operates a larger facility at the same location, including Courts and Juvenile Detention Center that provides both prosecution and defense legal services, the units being used for asylum seekers will receive direct County facility and/or building support as part of the overall complex. The cost components for the building units used for asylum seekers can be segregated and the County seeks some reimbursement through the Humanitarian Aid Modification Request for these cost elements, which are essential for safe, hygienic and comfortable shelter. Please note these units are completely separate from the balance of the Complex, making them ideal for conversion into a mass shelter for the temporary housing of adult asylum seekers accompanied by one or more minors.

Minor Facility Modifications

With minor modifications, Units 700, 800 and 900 of our Complex facility can be made both acceptable and desirable from a humanitarian aid perspective. These minor but critical modifications are as follows: 2 wall openings (\$13,500); removal of half shower doors and installation of shower curtains (\$850); removal of locking mechanism from dorm rooms (\$2,500); removal of a basketball hoop for programmatic space (\$300); installation of electrical outlets (\$2,575); disable and add covers to existing cameras (\$250); installation of light switches for each dorm room (\$350); bus turnaround for arrival and departure of ICE and Border Patrol buses

Ms. Dzbanko and Mr. Seltzer

Re: **Operation Stonegarden Funds Toward Humanitarian Aid Request to Support Catholic Community Services Central Casa Alitas and Distributed Shelters for Asylum Seekers**

July 11, 2019

Page 4

(\$25,000); exterior signage (\$3,000); installation of 6 cubicles (\$2,000); installation of recreation equipment (\$100); and installation of a security door (\$7,500).

These necessary, minimal facility improvements will make the Complex suitable for the CCS humanitarian activities—especially the provision of temporary housing. These are not excessive costs, but are reasonable accommodations to convert the Complex from a former juvenile detention facility to an asylum seeking and humanitarian aid accommodation facility.

Utilities

Because these facilities are integrated into a larger complex, the County will provide these facilities under a nominal lease to CCS as well as provide for expenses such as utilities (electric, gas, sewer, water and solar) all of which will be identified as a reimbursable expense for utility support related to Units 700, 800 and 900. Based on the Complex per square foot cost of utility systems and the square footage of this use, an approximate cost of \$8,000 per month should be planned.

Maintenance

Because these are County facilities, the County will also provide direct daily maintenance support and repairs to the facilities such as toilets, showers, faucets and other building support systems. This will be an expense reimbursement requested with facilities work order maintenance as documentation. This expense is estimated at approximately \$5,200 per month.

Janitorial

It is imperative the facilities receive frequent and consistent janitorial services. These services will include twice daily cleaning of all toilet and shower facilities as well as daily cleaning of the entire facility. These janitorial costs will also be included as a County reimbursable cost for providing this facility for CCS. Initial cleaning \$1,300 and ongoing daily cleaning cost it \$11,000 per month based on an existing contract with a private vendor providing cleaning services for the entire Complex.

Medical Supplies and Services Provided by the County

The County has Public Health oversight responsibility of asylum seekers and volunteers associated with this effort and the facility itself. Minor medical supplies—including personal protective equipment (inclusive of masks, eye protection, gowns, disposable gloves) as well as over the counter and prescription medications, oral and intravenous rehydration solutions, hand sanitizer, bandages,

Ms. Dzbanko and Mr. Seltzer

Re: **Operation Stonegarden Funds Toward Humanitarian Aid Request to Support Catholic Community Services Central Casa Alitas and Distributed Shelters for Asylum Seekers**

July 11, 2019

Page 5

and other medical consumables--are necessary (Attachment 6). The total cost per month for these items is estimated at \$2,960 per month or \$14,800 for the remaining grant period.

Food Purchase and Preparation and Laundry Services

Given the present low census at the Juvenile Justice Complex, additional cooks will be necessary. Pima County therefore plans to hire two full-time additional cooks, one for each shift to exclusively support the asylum seekers, since it is estimated that the average daily census for asylum seekers will be 250 individuals. The total cost for these two cooks in the remaining five month grant performance period is: \$22,580.80 (wages) and \$7,425 (employee-related expenses). The food costs per meal are: \$1.56 per breakfast meal; \$2.00 per lunch meal; and, \$4.36 per dinner meal. In order to serve 250 individuals per day over the five month grant performance period remaining, the food costs are \$297,000 (59,400 per month x 5 months).

Laundry cost is \$4.62 per sixty pound load with an estimated usage of 12 loads per day at a cost of \$1,663.20 per month. We are certainly open to discussing this cost, but it is a reality of providing humanitarian services as well as maintaining clean and hygienic temporary housing conditions.

Summary

As you can see, the total cost for providing asylum seeker services exceeds what was originally requested from a portion of the OPSG grant, or \$200,000. This is primarily because, at the time of our request, we never envisioned the County Juvenile Justice Complex being used as a 24-hour, 7 day per week, 52 weeks a year substitute facility for the Benedictine Monastery. Our original estimate assumed most, if not all, of the funding would go to our faith-based community partner, Catholic Community Services. Because of this, we will ask for the full projected cost of humanitarian aid and will, for this funding year, forego our indirect expense reimbursement request. As you recall, our Board of Supervisors approval of Operation Stonegarden deducted both indirect expenses and humanitarian aid from the overtime request of the Sheriff. If this request is approved, the Pima County Sheriff will still receive the same overtime allocation approved by the Board. Furthermore, no overtime funding is authorized for the Sheriff until the humanitarian aid request is fully approved.

If this information is difficult to audit, the County is willing to accept the per diem mileage, lodging and dental expense reimbursement rates contained in the Arizona Department of Administration State of Arizona Accounting Manual, which I believe is \$95 per asylum seeker housed per day and a meal and incidental reimbursement of \$45 per asylum seeker per day. Please indicate to us which option you believe is most appropriate to pursue for accounting and reimbursement processes.

Ms. Dzbanko and Mr. Seltzer

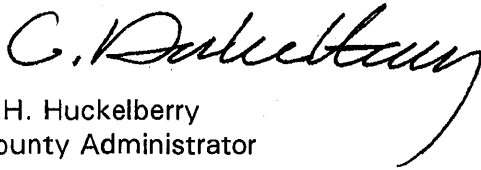
Re: **Operation Stonegarden Funds Toward Humanitarian Aid Request to Support Catholic Community Services Central Casa Alitas and Distributed Shelters for Asylum Seekers**

July 11, 2019

Page 6

Finally, we believe that providing humanitarian aid through OPSG funding is perfectly appropriate and is not inconsistent with OPSG policy objectives. In fact, if asylum seekers are simply released to our local streets, the resulting chaos will certainly endanger them as well as the community.

Sincerely,



C.H. Huckelberry
County Administrator

CHH/anc

Enclosures

c: The Honorable Chairman and Members, Pima County Board of Supervisors
Roy Villareal, Chief Patrol Agent, US Customs and Border Protection Tucson Sector
The Honorable Mark Napier, Pima County Sheriff
Michael J. Ortega, City Manager, City of Tucson
Most Reverend Edward Weisenburger, Bishop of Tucson
Chris Magnus, Chief Tucson Police Department
Marguerite "Peg" Harmon, Chief Executive Officer, Catholic Community Services

ATTACHMENT 1

OPSG Humanitarian Aid Modification Request Form

Arizona Department of Homeland Security

Subrecipient Information

Subrecipient Agreement Number:	<u>180403-03</u>
Date of Request:	<u>7/11/2019</u>
Agency:	<u>Pima County</u>
Point of Contact:	<u>Chuck Huckelberry, Pima County Administrator</u>
Email:	<u>Chuck.Huckelberry@pima.gov</u>
Phone:	<u>520-724-8587</u>
Period of Performance:	<u>March 01, 2019 through February 29, 2020</u>
Funding Source (OPSG Overtime/Mileage or OPSG Equipment):	<u>OPSG Overtime / Mileage</u>
Award Amount:	<u>\$1,218,986</u>
Amount Reimbursed to Date:	<u>\$0.00</u>

Modification Detail

Modification requests are only allowed in support of costs associated with humanitarian aid.

OPSG Humanitarian Aid Modification Request Form

Arizona Department of Homeland Security

1. Explain the current level of service being provided in support of humanitarian relief efforts related to the immigrant crisis on the border, including a list of the agencies providing service/support.

The basis of our request for humanitarian aid is founded on the longstanding faith-based, nonprofit relationship Pima County has with Catholic Community Services (CCS) in providing community services. CCS began providing humanitarian aid to asylum seekers in 2014 and has continued to provide these services without cost reimbursement until now. Unfortunately, the flow of asylum seekers has substantially increased per the volume of individuals released by either ICE or the US Border Patrol to CCS and other faith-based nonprofit organizations. Over the last year, CCS has accepted the major responsibility to provide shelter, food, temporary housing, transportation and medical care to asylum seekers at the Benedictine Monastery.

The Monastery site houses around 150 people per day but has sheltered up to 350 people when Border Patrol and ICE increased their releases to the community. This facility will close on or before August 6, 2019, requiring a new central shelter to be developed.

The total capacity of the shelters available on a regular basis in Pima County is 302 people per day. Often this is not enough to keep up with the increasing amount of releases into the local community.

List of Shelters in Pima County as of July 11, 2019:
Benedictine Monastery (CCS) with a capacity of 200 closes August 8, 2019, St. Francis in the Foothills United Methodist with a capacity of 20, First United Methodist Church with a capacity of 50, Trinity Presbyterian Church with a capacity of 8, Rincon Congregational UCC with a capacity of 24.

OPSG Humanitarian Aid Modification Request Form

Arizona Department of Homeland Security

2. How will the provision of services be tracked to ensure that humanitarian aid is being provided only to unaccompanied alien children and alien adults accompanied by an alien minor?

The Pima County Humanitarian Aid Modification Request seeks funding for costs related to the provision of humanitarian aid on a monthly basis within Units 700, 800 and 900 of the Juvenile Justice Complex (Complex). These costs are allowable per U.S. FEMA Information Bulletin 436, since they are directly related to humanitarian aid activities including the provision of food, medical supplies, and temporary housing. Catholic Community Services (CCS) will lease the Complex from Pima County and manage day-to-day operations of asylum seeker transition and temporary housing services exclusively for asylum seekers who are adults accompanied by a minor or minors (i.e., alien adults accompanied by an alien minor or minors). Immigration & Customs Enforcement and U.S. Border Patrol only release family units (i.e., alien adults accompanied by an alien minor or minors) to CCS sites; this will continue when CCS takes over the Complex site on August 6, 2019. Additionally, CCS will maintain tracking records for all family units served in the Complex during the remaining five months of the FFY 2018 OPSG Overtime-Mileage grant; these tracking records will be available for on-site monitoring and/or audit purposes.

OPSG Humanitarian Aid Modification Request Form

Arizona Department of Homeland Security

3. Provide a compelling justification regarding how the provision of humanitarian aid complements the overall OPSG mission.

The unprecedented increase in family unit migration and the public health emergency associated with drug addiction are real, not manufactured, or the product of some nefarious political scheme. Migrants are being victimized, financially, criminally and sexually as they make the journey from Mexico and Central America to our border. Human traffickers and sexual predators are profiteering from this crisis and only seek to escalate it. In addition to being victims of crimes, asylum seeking migrants without temporary supportive services are more likely to engage in crimes of necessity, aggravating the local crisis even further. As a result of the continuing exploitation of these migrants, the Pima County Sheriff's Department must allocate resources to deal with the crimes being committed against them. These resources, from the initial deputy investigating the crime, to the detective assigned the follow up investigation, to the task force participation with cooperating agencies, all take away from our ability to participate and enforce the border security mission. We simply do not have the resources to do both. By reducing the amount of children and migrants subject to victimization, it reduces the amount of resources we utilize to properly investigate and allows us to participate in the grant funded programs, such as Operation Stone Garden. The approval of humanitarian relief will increase Pima County's ability to reduce the victimization of these young migrant families and children and reduce the overall strain on our local social services as a result of the influx of asylum seekers. If local NGOs have the ability to receive humanitarian aid, they can accept and support unaccompanied minors and family units for a longer duration, reducing the instances of them being moved to other locations and reducing the increasing strain placed on Border Patrol and their detention facilities.

4. How will your agency coordinate with CBP to ensure the original scope of the OPSG program (high visibility, uniformed patrols in marked patrol vehicles) will be carried out with a reduction of funding available for the original purpose?

The Pima County Sheriff's Department will continue to work in coordination with CBP by providing increased law enforcement presence in the remote areas of Pima County with the remaining available funding as part of the award. This allows for increased air asset capability and "boots on the ground" ensuring that we are staying within the original scope of the award by increasing Border Security. We anticipate increased air patrols in the more western areas of Pima County (Ajo, Lukeville POE). Even with the reallocation of funds for humanitarian aid, the Pima County Sheriff's Department, based on past deployment statistics, anticipates; working 6,676hrs of overtime, 97,551mi of patrol driving, 2,300 traffic stops, 80 felony arrests, 160 misdemeanor arrests, 188 intelligence events generated and over 2,000lbs of marijuana seized. By securing the humanitarian aid, it ensures that we are able to continue to participate in the OPSG mission and work in partnership with CBP.

OPSG Humanitarian Aid Modification Request Form

Arizona Department of Homeland Security

5. Complete the Budget Narrative.

Located in the next tab.

OPSG Humanitarian Aid Modification Request Form

Arizona Department of Homeland Security

For AZDOHS Official Use Only

Planning Section:

Quarterly Report Received:

Q1: Oct 1 - Dec 31 ☐ Yes ☐ No

Q2: Jan 1 - Mar 31 ☐ Yes ☐ No

Q3: Apr 1 - Jun 30 ☐ Yes ☐ No

Q4: Jul 1 - Sep 30 ☐ Yes ☐ No

Planner Signature: _____

Date: _____

Assistant Director Signature: _____

Date: _____

AZDOHS/IPT Recommendation and/or
Comments: _____

Modification Request:

☐ Approved ☐ Denied

Modification Emailed To: _____

Date: _____

Is Financial Action Required:

☐ Yes ☐ No

Finance Section:

New Reimbursement Request Form Needed:

☐ Yes ☐ No

Reimbursement Request Emailed To: _____

Date: _____

Report Master Update:

Initial: _____ Date: _____

GIMS Update:

Initial: _____ Date: _____

Finance Signature: _____

Date: _____

Subrecipient Agreement Number:	180403-03
Award Amount:	\$1,218,986

<u>Budget Category</u>	<u>Description of Items</u>	<u>Current Budget</u>	<u>Original Quantity</u>	<u>Difference</u>	<u>Proposed Budget</u>	<u>Proposed Quantity</u>
Overtime		\$1,155,866		-\$530,347	\$625,520	
Mileage		\$50,000		\$0	\$50,000	
Equipment (Enter AEL # in this column.)						
Travel		\$13,120		\$0	\$13,120	
		\$0		\$0	\$0	
		\$0		\$0	\$0	
		\$0		\$0	\$0	
		\$0		\$0	\$0	
		\$0		\$0	\$0	
		\$0		\$0	\$0	
		\$0		\$0	\$0	
		\$0		\$0	\$0	
		\$0		\$0	\$0	
Humanitarian Relief	Fields below will expand once you press enter					

	<p>Estimated cost for meals are \$1.56 per breakfast meal; \$2.00 per lunch meal; and \$4.36 per dinner meal for a subtotal of \$7.92 for all (3) meals per day. Estimated to serve 250 asylum seekers (3) meals per day. 250 individuals x \$7.92/day = \$1,980/day. \$1,980/day x 30 days = \$59,400/month. \$59,400 x 5 months = \$297,000.</p> <p>Wages for (2) 1.0 FTE cooks = \$4,516.16/month x 5 months = \$22,580.80.</p> <p>Employment-Related Expenses (ERE) for (2) 1.0 FTE cooks = \$1,485/month x 5 months = 7,425.</p>					
Food		\$0		\$327,006	\$327,006	
Water		\$0		\$0	\$0	
Hygiene Products ¹		\$0		\$0	\$0	
Medicine ²		\$0		\$0	\$0	
Medical Supplies	<p>Minor medical supplies including personal protective equipment inclusive of masks, eye protection, gowns, and disposable gloves. Other costs include over-the-counter prescription medications, oral and intravenous rehydration solutions, hand sanitizer, bandages, and other medical consumables. Total cost per month for these items estimated at \$2,960/mo. x 5 months = \$14,800.</p>	\$0		\$14,800	\$14,800	

	<p>shelter: Utilities (electric; gas; sewer; water; solar) at \$8,000/mo. x 5 mos. = \$40,000. Facilities maintenance at \$5,200/mo. x 5 mos. = \$26,000. Janitorial: \$1,300 initial cleaning; \$11,000/mo. x 5 mos. = \$55,000. Laundry at \$4.62 per 60-pound load x 12 loads/day = \$55.44/day x 30 days = \$1,663.20/mo. x 5 mos. = \$8,316.</p> <p>Pima County minor facility modifications at \$57,925. The costs for modifications are as follows: 2 wall openings = \$13,500, removal of half shower doors and installation of shower curtains = \$850, removal of locking mechanism from dorm rooms = \$2,500, removal of a basketball hoop for programatic space = \$300, installation of electrical outlets = \$2,575, disable and add covers to existing cameras = \$250, installation of lightswitches for each dorm room = \$350, bus turnaround for arrival and departure = \$25,000, exterior signage = \$3,000, installation of 6 cubicles for travel arrangements = \$2,000, installation of recreation equipment = \$100, installation of security doors for facility = \$7,500.</p>					
Temporary Housing		\$0		\$188,541	\$188,541	
Transportation ³		\$0		\$0	\$0	
		\$1,218,986		\$0	\$1,218,986	

1. Specific hygiene products to be purchased must be listed under "Description".

2. Specific medicine to be purchased must be listed under "Description". Medicine includes products used to treat immediate health concerns (i.e. antibiotics; acetamenophen/ibuprofen; cough suppressants; etc.) and vaccines for the prevention of communicable diseases.

3. Transportation is limited to transportation costs incurred within local jurisdictional boundaries only.

ATTACHMENT 2



Roman Catholic

Diocese of Tucson

Office of the Bishop

P.O. Box 31, Tucson, Ariz., 85702 ■ 520-838-2500 ■ Fax: 520-838-2590

JUL 3 3:35PM

July 3, 2019

Mr. Chuck Huckelberry
County Administrator
Pima County
130 W. Congress St., 10th Floor
Tucson, AZ 85701

Dear Mr. Huckelberry,

For the past several months, Catholic Community Services, along with their faith-based and community partners, has been searching for a replacement respite and travel processing facility for asylum seekers deposited in Tucson by the Department of Homeland Security (DHS) agencies. The facility currently in use, the former Benedictine Monastery on County Club Road, is privately owned and scheduled for reconstruction by its owner beginning in August. The owner has been extremely gracious and generous, allowing the community to use the Monastery since January of this year.

Our local community has been responding to this humanitarian challenge since 2014. There is no sign that the DHS drop-offs of asylum seekers, primarily from Central America, is going to abate. If the Tucson and Pima County community do not respond and provide aid to these desperate people then they will be left on the streets of Tucson to fend for themselves. We have no choice but to provide the much-needed aid, which is a moral imperative of our faith.

The team working on this new location determined that any replacement facility needed to meet the following criteria:

- Large enough to provide safe, sanitary overnight quarters initially for at least 200 people, with the potential to increase to 300 people assisted on a daily basis.
- Capacity for at least 50 volunteers per shift to provide humanitarian aid and travel processing.
- Immediately available and in good condition, not requiring extensive or expensive rehabilitation before guests can be accommodated.
- Affordable leasing terms for a minimum of one year with availability for the length of time DHS intends to release asylum seekers in the Pima County region.

- A centralized location to reduce the commute time for volunteers, and in proximity to both the Tucson International Airport and the downtown bus station in order to allow guests to make their way to their final destination.

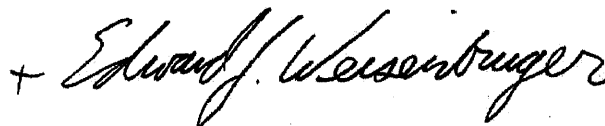
After reviewing dozens of potential sites, the team working on this relocation has determined that the northern unused sections of the Pima County Juvenile Justice Complex on East Ajo Way meets every criterion above and is by far our best option. We are requesting that Pima County lease this facility to Catholic Community Services for a nominal fee.

As we make this request we want to emphasize that the asylum seekers are in the United States legally and have been released by a DHS agency to Catholic Community Services or another partner in order to remain in the US while their asylum claim is processed. We also wish to note that very few of the asylum seekers remain in Tucson. The overwhelming majority are traveling to other parts of the country where they have family or sponsors awaiting them.

We join with our other Christian, Jewish and Muslim brethren as we practice the call of our faiths to give food to the hungry, drink to the thirsty, and welcome to the stranger. This opportunity to be a part of Tucson's greater community, faith communities, and government agencies to meet the needs of those who come to us in the midst of what is for many a life-or-death crisis is one we hope you will answer with an unambiguous and generous yes.

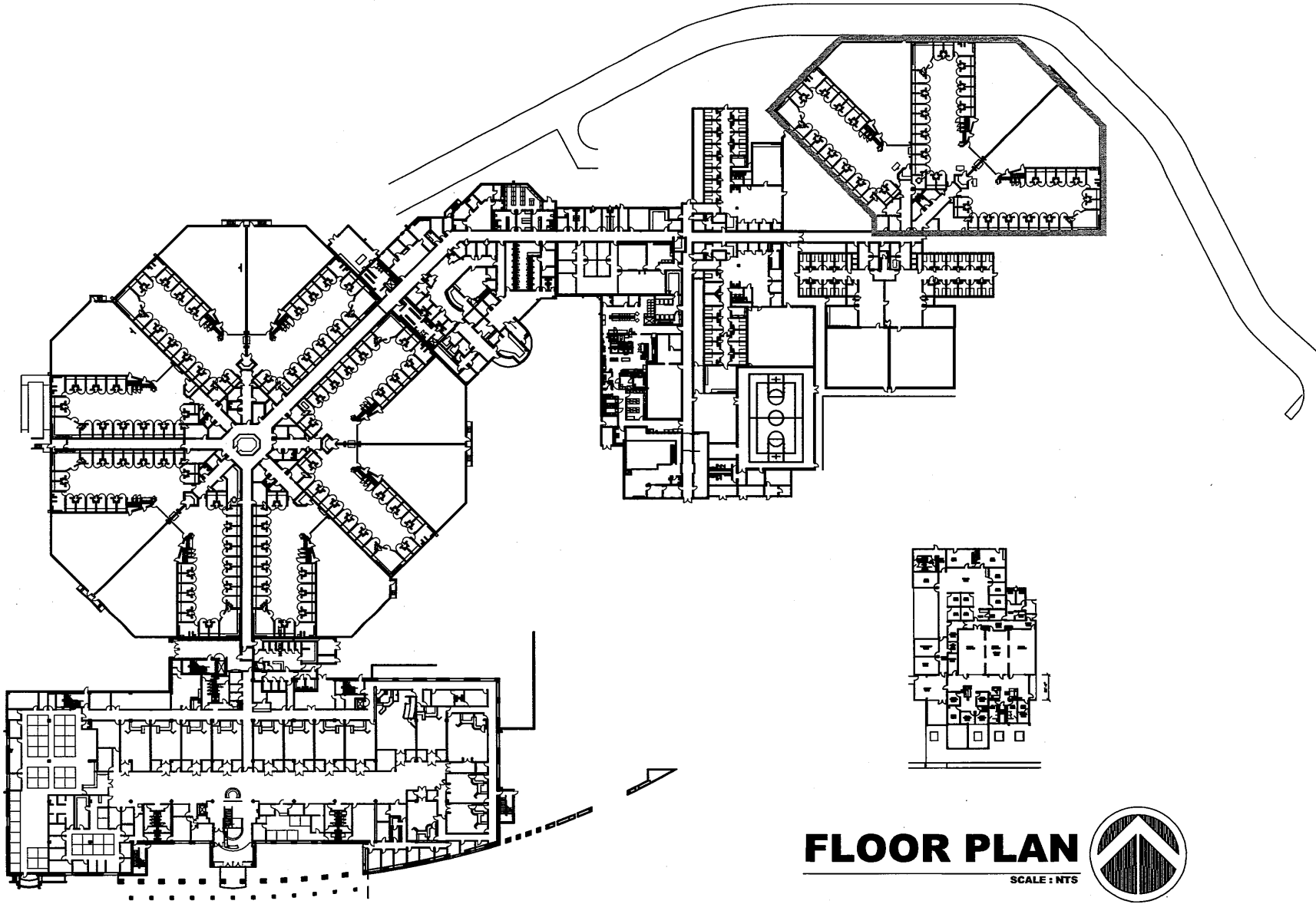
As always, please be assured of my prayers along with my gratitude for your service to our community.

Very Sincerely yours in Christ Jesus,

A handwritten signature in black ink, reading "Edward J. Weisenburger". The signature is written in a cursive style with a large, stylized "E" and "W".

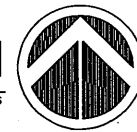
Most Reverend Edward J. Weisenburger
Bishop of Tucson

ATTACHMENT 3



FLOOR PLAN

SCALE: NTS



PIMA COUNTY FACILITIES MANAGEMENT, 150 WEST CONGRESS, TUCSON ARIZONA 85701 (520)740-3085

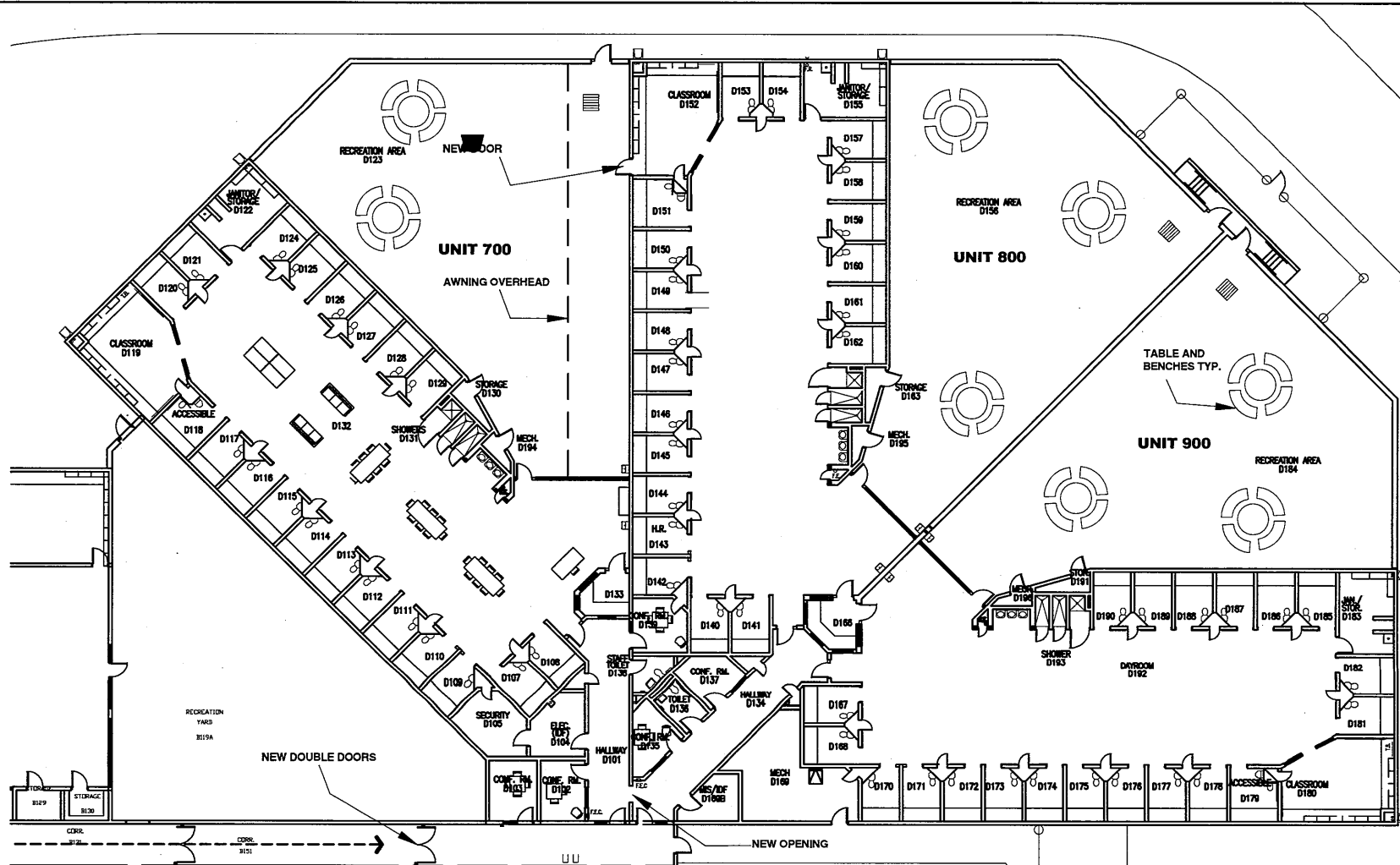
JUVENILE JUSTICE COMPLEX
2225 E AJO WAY
TUCSON, AZ

FLOOR PLAN



DATE: 7-10-2019
SHEET NO: 1
1 OF 1
V.O. NUMBER
Proj #

ATTACHMENT 4



ENLARGED FLOOR PLAN



PIMA COUNTY FACILITIES MANAGEMENT, 150 WEST CONGRESS, TUCSON ARIZONA 85701 (520)740-3085

PROCESSING & SHELTER FACILITY

2225 E AJO WAY

TUCSON, AZ



DATE: Rev Date

DESIGN BY: YU

END BY:

DATE: 7-8-2019

SCALE: NTS

SHEET NO:

1

1 OF 2

W.D. NUMBER

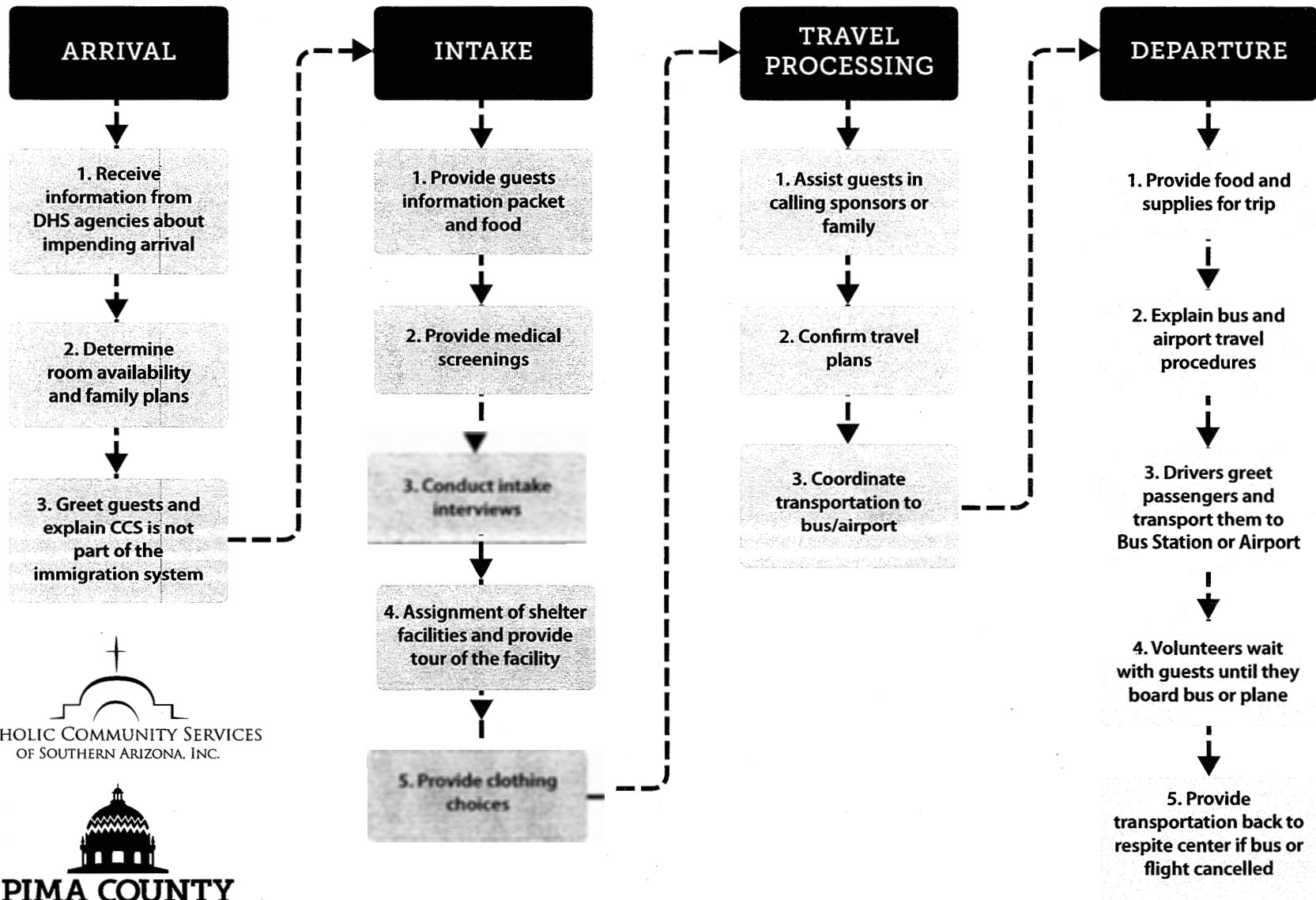
Proj #

FLOOR PLAN

ATTACHMENT 5

Arrival, Intake, Travel Processing & Departure Process

Catholic Community Services Respite and Travel Processing Center




CATHOLIC COMMUNITY SERVICES
OF SOUTHERN ARIZONA, INC.


PIMA COUNTY

ATTACHMENT 6

Monthly Medical Supplies and Services Provided by Pima County

Product	Count	Price
Biosafety Mask w/Eye Shield pkg of 25	2	\$176
Mask w/ Ear Loop pkg 500	1	\$84
Nitrile Gloves (S,M,L) pkg of 100	10	\$120
Barrier Isolation Gown pkg of 50	2	\$90
GoodSense Pedialyte 33oz Bottles/6pack	60	\$1,540
RID Lice Killing Shampoo 8oz Bottles	30	\$455
Purell Hand Sanitizer	50	\$495
	Total	\$2,960