



BOARD OF SUPERVISORS AGENDA ITEM REPORT

Requested Board Meeting Date: October 16, 2018

Title: Aerial Easement to Tucson Electric Power Company ("TEP")
File # E-0109

Introduction/Background:

TEP has requested an easement across Pima County Flood Control District property located over a portion of the West Branch Santa Cruz Drainage Way, lying within Section 3, Township 15, Range 13 G&SRM, Pima County, Arizona, as shown on the attached Location Map.

Discussion:

TEP has determined they need electrical system reinforcement connecting facilities for better reliability, which necessitates a new easement.

Conclusion:

This request has been reviewed by appropriate County staff and they agree to granting the easement.

Recommendation:

Staff recommends that the Pima County Flood Control District Board of Directors approve the Easement pursuant to ARS '48-3603(K). Upon approval, staff will record the necessary conveyance document.

Fiscal Impact:

Pima County Flood Control District received \$1300.00 which includes \$100.00 in revenue and \$1200.00 in reimbursement for the appraisal fee.

Board of Supervisor District:

☐ 1 ☐ 2 ☐ 3 ☐ 4 ☒ 5 ☐ All

Department: Real Property Services

Telephone: 724-6311

Contact: Tim Murphy

Telephone: 724-6379

Department Director Signature/Date:

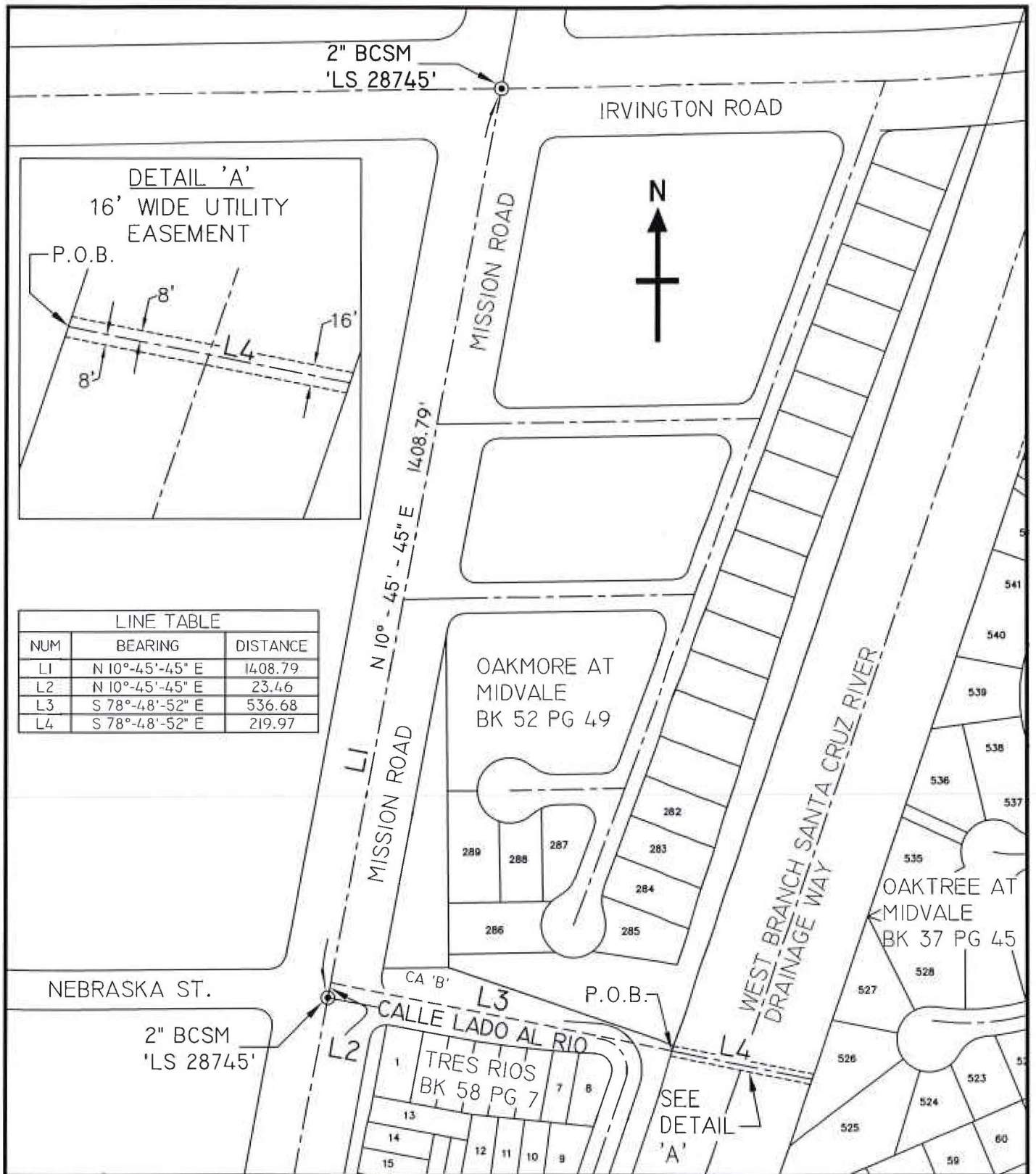
9-24-2018

Deputy County Administrator Signature/Date:

9/25/18

County Administrator Signature/Date:

9/25/18



LINE TABLE		
NUM	BEARING	DISTANCE
L1	N 10°-45'-45" E	1408.79
L2	N 10°-45'-45" E	23.46
L3	S 78°-48'-52" E	536.68
L4	S 78°-48'-52" E	219.97

TEP Tucson Electric Power Company
TUCSON, ARIZONA

16' WIDE EASEMENT

WEST BRANCH SANTA CRUZ RIVER DRAINAGE WAY
AS RECORDED IN DOCKET 7704 AT PAGE 1087
NE ¼ OF SW ¼ SECTION 3, T. 15 S. - R. 13 E., PIMA COUNTY, ARIZONA

EXHIBIT DRAWING

T 15 R 13 S 3 QSW

2 2