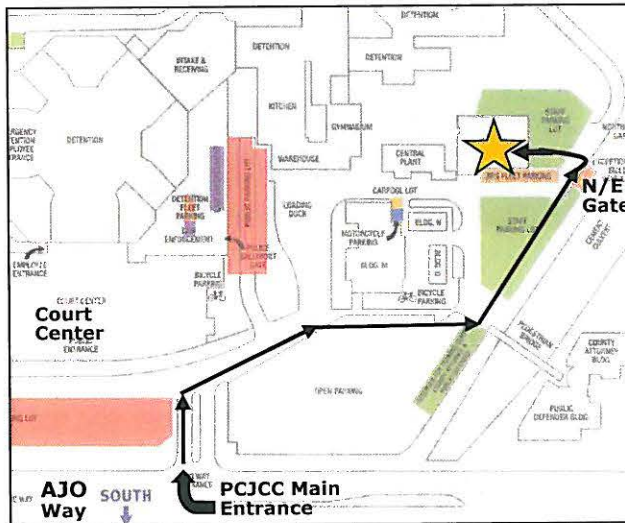


## Mission

The mission of Pima County Juvenile Court and the ACES Center is to ensure children are protected, youth are rehabilitated, and the community is safe by administering timely and impartial justice and providing innovative services.

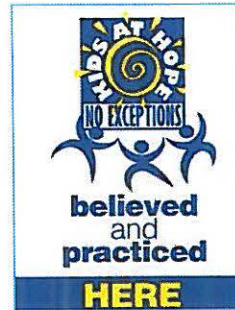
## Vision

We instill hope and create positive change for children and families.

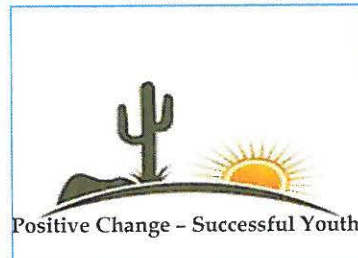


The ACES Center is located at the Northeast end of the PCJCC campus, as marked above by ★

\*Follow directional signs.



Pima County Juvenile Court Center  
(PCJCC)  
Alternative Community Engagement  
Services (ACES) Center  
2225 E. Ajo Way  
Tucson, AZ 85713



Pima County Juvenile Court's ACES Center is a community resource, designed to enhance public safety and reduce the need for, and use of, secure detention by providing youth and families with timely intervention and referrals to community supports.

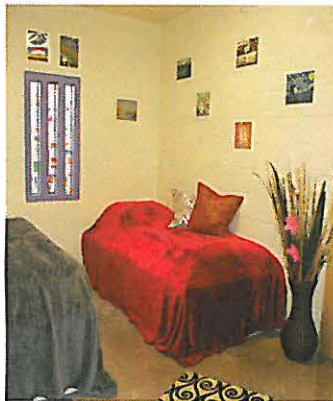


Located on the Pima County Juvenile Court Campus  
2225 E. Ajo Way  
Tucson, Arizona 85713  
(520) 724-5017

## ACES Center Objective

The Pima County Juvenile Court **Alternative Community Engagement Services (ACES) Center** has been developed with an overall goal of reducing recidivism and providing Pima County youth and families with assistance locating needed community resources, regardless of Court status.

Additionally, the ACES Center serves as an alternative to secure detention, allowing a "cooling off" period for youth and families when there has been a domestic violence incident. Other services provided in the Center include immediate screenings for behavioral health, substance abuse, trauma and resiliency needs, community agency referrals, respite, case management, and other services deemed necessary.



The Center is staffed by Probation Officers and Juvenile Detention Alternative Specialists specially trained to work closely with youth and families, striving to

increase positive outcomes and minimize juvenile justice involvement. To that end, the Center incorporates the Kids at Hope philosophy of **"All Kids are Capable of Success—NO EXCEPTIONS"**, as well as the PCJCC motto of **"Positive Change, Successful Youth"**.

## Eligibility:

Any youth between the ages of 8 to under 18, and their families.

## Serving the following groups:

- Youth referred by law enforcement for misdemeanor domestic violence and status offenses,
- Non-referred youth transported by law enforcement, requiring removal from an unsafe situation,
- Youth not meeting necessary points for continued detainment, but requiring time for families to arrange transportation,
- Youth and families who have not entered the juvenile justice system, but are in need of interventions and referrals to community agencies.

## Services Provided:

- Crisis intervention
- Safety planning
- Success planning
- Case management
- Transportation
- Screenings to assess individual needs
- Referral to community resources
- Activities designed to engage youth
- Respite services, up to 23 hours



## Hours of operation:

The Center is open **24 hours per day, 7 days per week, including holidays.**



## Location and Contact information:

Pima County Juvenile Court Center (PCJCC)  
Alternative Community Engagement  
Services (**ACES**) Center  
2225 E. Ajo Way  
Tucson, AZ 85713  
Phone: (520) 724-5017  
Fax: (520) 724-4793