



SUBCONTRACTOR BID FORM - REVISED 11.3.2014

Office: 520-207-8228 | Fax 623-582-3761
1904 W. Prince Rd., Tucson, AZ 85705
www.bfcontracting.com | License # AZ ROC-089744

To: B&F Contracting, Inc.

From: JPCI Services

4702 E. Virginia Street, Mesa, AZ 85215-9101

Phone: 480-986-1212

Email: bdurfee@jpciservices.com

RE: Construction Manager at Risk Services for North Rillito Interceptor Rehabilitation
Pima County Project No. 3NRI14

Subject: Bid Due Date: Thursday 11/13/2014
Time: 4:00 PM
Location: B&F Tucson Office
1904 W. Prince Rd., Tucson, AZ

General Information:

B&F Contracting, Inc., acting as the CM@Risk Contractor is requesting proposals from approved contractors interested in furnishing subcontractor services for the project.

Plan Availability:

Electronic Copies of Project drawings and Specifications will be available for pickup at the B&F Tucson Office

**Bids will be received and opened privately by B&F with PCRWRD

1 Special Instructions to Bidders

- 1.01 Instruction to Bidders are provided for the purpose of clarifying the Subcontractor Bid Form. Each prospective Bidder shall review the below instructions and all documents prior to submission of their respective bid.
- 1.02 If prospective bidder elects not to bid, please inform B&F Contracting Inc. in writing immediately via fax or email.
- 1.03 Bids can be submitted electronically (dfoley@bfcontracting or tomf@bfcontracting.com), fax (623.582.3761) or hand delivered at the B&F Tucson Office by 4:00 PM Arizona time Thursday November 13, 2014, located at 1904 W. Prince Rd., Tucson, AZ.
- 1.04 Any bids received after 4:00 PM on November 13, 2014 will be considered non-responsive and not be read at the bid opening. Telephone bids will not be accepted, email or fax bids are acceptable. Fax bids will be sent to 623.582.3761. If the bidding contractor elects to fax or email their bid it will be their responsibility to call and confirm receipt of your faxed or emailed bid before the bid due time.
- 1.05 Any and all questions related to this bid shall be directed in writing via email to Dan Foley at the email addresses listed above. The last day for questions to be answered will be Friday November 7, 2014.
- 1.06 Bids are required to be submitted on the 'Subcontractor Bid Form'. Please insert N/A on bid items outside your scope.
- 1.07 Receipt and review of Addenda and/or Amendments shall be acknowledged by the Bidders on their completed Subcontractor Bid Form
- 1.08 B&F to provide electronic copies of plans, specifications, as-builts, pre-videos, inspection reports, etc., to bidding contractors on usb flash drive. Bidding contractors to return flash drives after bid period is complete.
- 1.09 Pima County Regional Wastewater Reclamation Department and B&F Contracting reserve the right to accept or reject any and/or all Bids.
- 1.1 Pima County Regional Wastewater Reclamation Department and B&F Contracting reserve the right to waive any informality in any Bid.
- 1.11 Prospective bidders are to refrain from contacting the Owner or Designer with questions regarding the Bid. All questions are to be directed to B&F Contracting, Inc.
- 1.12 Bids received after the bid due date/time will not be considered. Any bid modification received after the bid date/time will not be considered.
- 1.13 Contractor selection criteria for the rehabilitation work will be based on the following criteria; Price, Qualifications and Schedule.

- 1.14 The bidder assumes full responsibility for timely delivery at the location specified for receipt of bids.
- 1.15 Bids which modify any of the provisions of the Bidding or Contract documents will not be considered.
- 1.16 A Bid that is in the possession of B&F Contracting Inc. may be withdrawn by the bidder up to the time of the bid opening.
- 1.17 Each Bidder shall provide unit prices in accordance with the required Bid Schedule
- 1.18 Bid pricing shall include but is not limited to the following: Any and all costs for fabrication, delivery and expeditious delivery, layout, supervision, labor, materials, equipment, uncrating, setting, hoisting, installation, parking, storage, insurance, permits, engineering, supervision tools, payroll taxes, escalation, overhead, profit, shop drawings, submittals, samples, mock ups, overtime or weekend work and any other costs necessary to complete the work required in accordance with all associated project documents per the provided construction schedule.
- 1.19 Bid prices shall be based on earliest attainable delivery without incurring additional costs to the owner.
- 1.20 The successful Bidder will be notified only after a thorough review and evaluation of all the bids that have been made to the PCRWRD and B&F Contracting. Bid evaluations will be based on but not limited to: Scope, price qualifications and ability to meet the construction schedule. A post bid interview may also be required.
- 1.21 CIPP Lining Contractors are required to submit CIPP shot schedule with bid documents. Failure to submit CIPP shot schedule with the bid documents will result in the rejection of your bid proposal. Please include Reach I.D., Length, Thickness, Inversion/Tail MH's, Etc.
- 1.22 Each bidder shall include overtime rates/pricing into their bid. This project will have a 24/7 schedule with 7-day work weeks to meet the construction schedule provided with the bid documents. B&F will not accept additional costs for overtime rates.
- 1.23 CIPP & Manhole Contractors are to submit crew availability and quantities to B&F Contracting with their bid. A Microsoft Word document will be acceptable.
- 1.24 CIPP Lining & MH Rehab Contractors are to commit and maintain multiple consistent crews and foreman for each of the phases. The interchanging of crew and personnel from phase to phase will not be accepted on this project.
- 1.25 CIPP & Manhole Contractors are to submit a list including key personnel on the project (Superintendent & Project Manager) to B&F Contracting Inc. for review with the bid documents.
- 1.26 CIPP & Manhole Contractors are to submit a list showing your current workload in the Southwest Region, where crews specific to AZ are currently being utilized. Please list project name, size, schedule and crew commitments.
- 1.27 No more than 1 major intersection may be blocked at a time by either the CIPP, Manhole Rehab or Bypass Pumping contractor.
- 1.28 CIPP Lining contractors are to refrain and/or limit inversion in private properties where access is limited (i.e. backyard, driveway, landscaped areas) All manholes residing in these areas will need to be used as "Tail Manholes" or "Thru Manholes" for the liner.
- 1.29 Bypass Pumping for the NRI sewer flows and all incoming lateral flows will be handled by B&F Contracting. Please do not include these costs in your bid.
- 1.30 Manhole Rehab Contractor to provide and place their own plugs as required to complete their own scope of work, and to maintain a dry work environment.
- 1.31 It is B&F Contracting's intent to award the CIPP lining contract for the entire project to one (1) Contractor
- 1.32 Manhole Rehabilitation Contractor to verify that their product is on the PCRWRD's Approved Product List.
- 1.33 The MH Coating/Rehab work could possibly be split between two (2) contractors due to SBE/DBE Compliance with Pima County Procurement.
- 1.34 Temperature sensor cable to continuously monitor the cure temperature of CIPP liner along the entire length of pipe, to be provided by the CIPP contractor
- 1.35 MH Coating to provide sandbagging or plugging for nuisance water during all MH underlayment and Coating operations at each individual MH. B&F to provide all mainline flow management for 8-inch and larger flows, but cannot guarantee a completely dry manhole condition.
- 1.36 CIPP & Manhole Coating Contractors are required to field verify existing conditions of sewer and manhole diameters prior to bidding this project. It is expected that any variation from the B&F provided bid schedule be included within your unit cost. It is up to the bidding contractor to confirm existing sizes of the interceptor and manholes, and cross reference with the Pima County GIS System, As-Builts and MH Inspection Reports.
- 1.37 Manhole Coating Rehabilitation work includes, but is not limited to: Surface Preparation Work, Build-Back, Re-Work of Invert and/or Channels, Chipping, Demolition Re-Profiling and Corrosion Resistant Coatings as called out on the Manhole Inspection Report provided on the USB drive. Please pay attention to Brown & Caldwell's specific recommendations for repair at each manhole and include them with your VF pricing.
- 1.38 Please provide a list of your current workload in Arizona, Nevada and California with the assigned key personnel managing those projects.
- 1.39 B&F will require full time supervision from the MH Coating and CIPP Lining Contractors. It is a requirement to provide full time onsite supervision throughout the course of this project.

- 1.40 A pre-liner is required for CIPP Lining of existing Coated ACP sewer lines. B&F has provided initial quantities below on the bid schedule but the CIPP contractor is tasked with field verifying those quantities.
- 1.41 Only CIPP Lining Contractors are required to provide a Payment/Performance Bond on this project per Item 12 below. Please include this cost under the 'Bond' section of this bid for consideration (do not include in your unit cost).
- 1.42 Water Cure is the only acceptable curing/inversion method on this project. Air/Steam will not be accepted and is grounds for disqualification if included in your bid.
- 1.43 MH Rehabilitation/Coating Contractor to provide three (3) year warranty/maintenance bond with their bid. Contractor to provide breakout pricing for this cost on the bottom of the bid schedule below (not in the VF unit pricing).
- 1.44 Lining Contractors to provide all styrene monitoring per the RWRD Specifications.
- 1.45 B&F to provide all new manhole frame/covers and concrete collars.
- 1.46 MH rehabilitation/Coating Contractor to pay close attention to new MH Coatings Specifications provided for this project. This specification is brand new for the county and has not been used in the past. Please review the revised cleaning, underlayment, finish and testing requirements outlined.
- 1.47 CIPP Lining Contractors are not to include costs for cleaning, pre and post video in your unit prices. B&F to provide. B&F expects the CIPP Lining Contractor to take part in the coordination and scheduling process for the clean/cctv subcontractor.
- 1.48 MH Coating Contractor to provide costs for removal of existing steps and replacement with new in their VF unit pricing on the bid schedule below.
- 1.49 MH Coating Contractor to remove any T-Lock as necessary at existing manholes.
- 1.50 CIPP Lining Contractor to provide all 'End Seals' using Neopoxy or similar product to complete their own scope of work
- 1.51 MH Coating Contractor scope of work includes coating of the invert to match the thickness of the CIPP Lining. Also include costs for coating and Tie-in to CIPP liner at "Lined Through Manholes" and "Tail End" with compatible product, and CIPP 'End Seal Work'
- 1.52 CIPP Lining contractor to provide their own construction water for CIPP lining operations, including, but not limited to; hydrant meters, piping, valves permits, water ramps, etc.. If any trenching is required for roadway crossings, please provide the areas and dimensions on an extra sheet with your bid.
- 1.53 CIPP Lining contractor to furnish and install hydrophilic seals between the host pipe and new CIPP Liner at each manhole.
- 1.54 MH 8716-04 to 8716-03 in Phase 1 has been previously CIPP lined on a recent project. Please do not include CIPP costs for this reach.
- 1.55 MH Coating contractor to review Sabino Creek Siphon Inlet & Outlet Structure As-built Drawings for rehabilitation and coating work at 4466-IN & 4466-OUT. Work scope includes, but is not limited to, cleaning, coating and new redwood diversion stop logs. B&F remove and replace existing concrete lids with new precast material that will need to be coated.
- 1.56 CIPP & MH Coating Contractors are to provide daily cleanup of the jobsite and manholes/reaches. It is expected for MH Contractors to cleanup all debris generated from cleaning, preparation and coating activities.
- 1.57 CIPP Contractor to provide a letter from your bonding company that you have the capacity to provide a payment/performance bond for this project.
- 1.58 Bidding Contractors to adhere to Pima County, 2012 Engineering Design Standards and Standard Specifications and Details for Construction 2012
- 1.59 Additional installation days for CIPP or MH Coating Work, outside of your Calendar Days listed above will result in the MH Coating Contractor furnishing and installing flow thru plugs to complete their own scope of work if the flow management system is removed.
- 1.60 A Payment/Performance bond is not required for MH Rehabilitation/Coating Contractors
- 1.61 There will be no liquidated damages assessed on this project.
- 1.62 Please see the attached RFI's for further clarification for the MH Coatings/Rehabilitation Work.
- 1.63 Coating Contractors will be required to perform the rehabilitation and coating of the manhole bases, channels, bench and inverts first, as part of your rehabilitation sequence of work. Once the work is completed, inspected and approved on the manhole bases, B&F will release sewer flows and shutdown the Flow Management System. The Coating contractor can then focus their efforts on the rehabilitation and coating of the manhole barrel sections. Focusing on the bases, allows for a greater costs savings to the county, and eliminates any schedule delays and cost risks associated with the operation of the bypass system. If coating contractors are geared up with multiple crews, and have the manpower to complete all rehabilitation and coating activities within the same timeframe that is preferred and you will not be limited.
- 1.64 Please review the Revised Technical Specifications for MH Rehabilitation and Corrosion Protectant Coatings dated 10.23.2014 for this bid. The county has made several changes for this new bid, and B&F highly emphasizes a thorough review of these new specifications.
- 1.65 B&F has ICRI CSP Sample Chips in our Tucson Office if any of the subcontractors would like to see them in regards to the roughness/smoothness specification for underlayment and final surface coating.

2 Mandatory Pre-Bid Meeting

A Mandatory Pre-Bid Conference has been scheduled for 9/30/2014 at 10:00 am and will be held at the PCRWRD Conveyance Office located at 3355 N. Dodge Blvd., Tucson, AZ

3 Project Schedule:

Bid Documents available to Subcontractors	28-Oct-14
Mandatory Pre-Bid Meeting	Not Schedule (Unless there is interest)
Final Day for Questions	7-Nov-14
Bid Due Date	13-Nov-14
Bid Review	November 13th through November 21st
Subcontractor Notification of Selection	Week of the November 24th
Submittal Due Date	8-Dec-14
Notice to Proceed	1-Dec-14

4 North Rillito Interceptor - As-Builts

Electronic copies have been made available for the as-builts associated with the NRI Rehab Project. Please review these to verify shot lengths, dimensions, manhole sizes, structures, pipe materials and interior diameter prior to the bid and ordering of materials.

5 North Rillito Interceptor - Manhole Inspection Report

Electronic copies of the manhole inspection report have been made available to all potential MH & CIPP contractors prior to the bid. Please pay particular attention to the notes and photos of the manholes in regards to the condition of the existing channels and benches. The costs for rehabilitating these will need to be included in your VF price for manhole rehabilitation.

6 Flow Management Plans - Phase 1, 2, & 5

B&F will make available electronic copies of our flow management plans for Phase 1, 2 & 5, as they have been developed and approved at this point. The limits of Phases 3, 4 & 6 will be shown on a conceptual map. Phase 3 is tentatively from Sabino Canyon Rd. to Craycroft. Phase 4 Craycroft to Swan. Phase 6 is from Alvernon Way to Campbell Rd.

7 Project Sequence & Scheduling

This project will be broken into six (6) separate Rehabilitation Phases along the Rillito River. With the anticipation of each phase lasting 3-4 months for all rehabilitation and repair type work (New MH's, CIPP, Structures, Point Repairs, etc.). It is anticipated that there will be lags between each phases of roughly one (1) month to allow for the FMP installation, where there will be no CIPP or MH Rehab work taking place. See below for the phase limits:

- Phase 1 - Woodland Rd. to the Sabino Creek
- Phase 2 - Sabino Creek to 800' west of Sabino Canyon Rd.
- Phase 3 - Sabino Canyon Rd. to Craycroft Rd.
- Phase 4 - Craycroft Rd. to Swan Rd.
- Phase 5 - Swan Rd. to Alvernon
- Phase 6 - Alvernon to Campbell Rd.

Phase 1 Rehabilitation Section

This section encompasses the CIPP lining and Manhole Rehab work from (MH's 8716-20 to SIPHON 4466-IN). Approximately from Woodland Rd. to west of Tanque Verde Rd. ending at the Sabino Creek

Phase 2 Rehabilitation Section

This phase encompasses the CIPP Lining and Manhole Rehab work from MH's (4466-OUT to 1700-04). Approximately from the Sabino Creek to just west of Sabino Canyon Rd.

Phase 3 Rehabilitation Section

This phase encompasses the CIPP lining and Manhole Rehab work from MH's (1700-04 to S033-03). Approximately from west of Sabino Canyon Road to just west of Craycroft Rd.

Phase 4 Rehabilitation Section

This phase encompasses the CIPP Lining and Manhole Rehab work from MH's (5033-03 to 1712-01). Approximately from west of Craycroft Rd. to east of Swan Rd.

Phase 5 Rehabilitation Section

This phase encompasses the CIPP Lining and Manhole Rehab work from MH's (1712-01 to 1710-05). Approximately from east of Swan Rd. to Alvernon Way.

Phase 6 Rehabilitation Section

This phase encompasses the CIPP Lining and Manhole Rehab work from MH's (1710-05 to 8809-01). Approximately from Alvernon Way to west of Campbell Rd.

8 Bid Schedule

A. Phase 1 Rehabilitation Section - Woodland Rd to Sabino Creek Siphon (MH 8716-20 to 4466-IN)

MANHOLE REHABILITATION & COATING - PHASE 1

1	Rehabilitate & Coat Existing Manholes	181	VF	\$760.00	\$137,560.00
2	Rehabilitate & Coat Existing Base for MH Structural Inserts (MH 8716-05 & 8716-04)	2	EA	\$4,620.00	\$9,240.00
3	Coat New CIP MH Base for 72" Manhole Removal/Replacement (MH 8716-07, 8716-06, 8716-03)	3	EA	\$5,489.00	\$16,467.00
4	Adhesion Tests	20	EA	\$253.00	\$5,060.00
5	1-inch additional underlayment application for extremely deteriorated manholes	45	VF	\$270.00	\$12,150.00

SUBTOTAL - MH REHABILITATION & COATINGS \$180,477.00

**Please List Your Installation Days Required to Complete Your Own Scope of Work (Calendar Days):

27 work days,

MH Coatings 8 of the days under bypass

Please List any MH's That Require CIPP Inversion Access, Cone/Barrel Removals or Base Modifications Below:

B. Phase 2 Rehabilitation Section - Sabino Creek Siphon to Sabino Creek Road (4466-OUT to 1700-04)

Item Number & Description	Pipe Material	Quantity	Unit	Unit Price	Total
---------------------------	---------------	----------	------	------------	-------

MANHOLE REHABILITATION & COATING - PHASE 2

1	Rehabilitate & Coat Existing Manholes	160	VF	\$760.00	\$121,600.00
2	Rehabilitate & Coat Existing Base for MH Structural Insert (MH 1700-12)	1	EA	\$4,620.00	\$4,620.00
3	Coat New CIP MH Base for 60" Manhole Removal/Replacement (MH 1700-07)	1	EA	\$4,598.00	\$4,598.00
4	Coat New CIP MH Base for 84" Manhole Removal/Replacement (MH 1700-15, 6295-01, 1700-11, 1700-09, 1700-08)	5	EA	\$5,720.00	\$28,600.00
5	Adhesion Tests	20	EA	\$253.00	\$5,060.00
6	1-inch additional underlayment application for extremely deteriorated manholes	44	VF	\$270.00	\$11,880.00

SUBTOTAL - MH REHABILITATION & COATINGS \$176,358.00

**Please List Your Installation Days Required to Complete Your Own Scope of Work (Calendar Days):

24 work days,

MH Coatings 8 of the days under bypass

**Please List any MH's That Require CIPP Inversion Access, Cone/Barrel Removals or Base Modifications Below:

C. Phase 3 Rehabilitation Section - Sabino Canyon Rd. to Graycroft Rd (MH 1700-04 to 5033-03)

Item Number & Description	Pipe Material	Quantity	Unit	Unit Price	Total
---------------------------	---------------	----------	------	------------	-------

MANHOLE REHABILITATION & COATING - PHASE 3

1	Rehabilitate & Coat Existing Manholes	423	VF	\$760.00	\$321,480.00
2	Adhesion Tests	12	EA	\$253.00	\$3,036.00
3	1-inch additional underlayment application for extremely deteriorated manholes	106	VF	\$270.00	\$28,620.00

SUBTOTAL - MH REHABILITATION & COATINGS \$353,136.00

**Please List Your Installation Days Required to Complete Your Own Scope of Work (Calendar Days):
36 working days,

MH Coatings 10 of the days under bypass

**Please List any MH's That Require CIPP Inversion Access, Cone/Barrel Removals or Base Modifications Below:

D. Phase 4 Rehabilitation Section - Graycroft Rd to Swan Rd (MH 5033-03 to 1712-01)

Item Number & Description	Pipe Material	Quantity	Unit	Unit Price	Total
---------------------------	---------------	----------	------	------------	-------

MANHOLE REHABILITATION & COATING - PHASE 4

1	Rehabilitate & Coat Existing Manholes	141	VF	\$760.00	\$107,160.00
2	Adhesion Tests	5	EA	\$253.00	\$1,265.00
3	1-inch additional underlayment application for extremely deteriorated manholes	36	VF	\$270.00	\$9,720.00

SUBTOTAL - MH REHABILITATION & COATINGS \$118,145.00

**Please List Your Installation Days Required to Complete Your Own Scope of Work (Calendar Days):
23 working days,

MH Coatings 7 of the days under bypass.

**Please List any MH's That Require CIPP Inversion Access, Cone/Barrel Removals or Base Modifications Below:

E Phase 5 Rehabilitation Section - Swan Rd to River and Alvernon Way (MH 1712-01 TO 1710-05)

Item Number & Description	Pipe Material	Quantity	Unit	Unit Price	Total
---------------------------	---------------	----------	------	------------	-------

MANHOLE REHABILITATION & COATING - PHASE 5

1	Rehabilitate Existing Sewer Manholes	220	VF	\$760.00	\$167,200.00
2	Adhesion Tests	5	EA	\$253.00	\$1,265.00
3	1-inch additional underlayment application for extremely deteriorated manholes	55	VF	\$270.00	\$14,850.00
SUBTOTAL - MH REHABILITATION & COATINGS					\$183,315.00

****Please List Your Installation Days Required to Complete Your Own Scope of Work (Calendar Days):**
35 working days,
MH Coatings 8 of the days under bypass.

****Please List any MH's That Require CIPP Inversion Access, Cone/Barrel Removals or Base Modifications Below:**

F Phase 6 Rehabilitation Section - River and Alvernon Way to West of Campbell (MH 1710-05 TO 8809-01)

Item Number & Description	Pipe Material	Quantity	Unit	Unit Price	Total
---------------------------	---------------	----------	------	------------	-------

MANHOLE REHABILITATION & COATING - PHASE 6

1	Rehabilitate Existing Sewer Manholes	653	VF	\$760.00	\$496,280.00
2	Coat New CIP MH Base for 84" Manhole Removal/Replacement (MH 1708-34A)	1	EA	\$5,720.00	\$5,720.00
3	Coat New CIP MH Base for 120" Manhole Removal/Replacement (MH 1708-36, 1708-34, 1708-25)	3	EA	\$7,480.00	\$22,440.00
4	Adhesion Tests	26	EA	\$253.00	\$6,578.00
5	1-inch additional underlayment application for extremely deteriorated manholes	164	VF	\$270.00	\$44,280.00
SUBTOTAL - MH REHABILITATION & COATINGS					\$575,298.00

****Please List Your Installation Days Required to Complete Your Own Scope of Work (Calendar Days):**
65 working days,
MH Coatings 15 of the days under bypass

****Please List any MH's That Require CIPP Inversion Access, Cone/Barrel Removals or Base Modifications Below:**

NORTH RILLITO INTERCEPTOR REHABILITATION BID RECAP

Phase 1 Rehabilitation Section TOTAL BASE BID (ITEM A) \$180,477.00

Phase 2 Rehabilitation Section TOTAL BASE BID (ITEM B) \$176,358.00

Phase 3 Rehabilitation Section TOTAL BASE BID (ITEM C) \$353,136.00

Phase 4 Rehabilitation Section TOTAL BASE BID (ITEM D) \$118,145.00

Phase 5 Rehabilitation Section TOTAL BASE BID (ITEM E) \$183,315.00

Phase 6 Rehabilitation Section TOTAL BASE BID (ITEM F) \$575,298.00

MH Coatings - 3 Year Warranty/Maintenance Bond COST \$52,362.06

PROJECT TOTAL \$1,639,091.06

G ADD ALTERNATES

Item Number & Description	Quantity	Unit	Unit Price	Total
1 Rehabilitate & Coat Existing Sabino Creek Siphon Inlet & Outlet Structure. Including new redwood diversion stop logs. (*B&F to provide new precast structure lids and openings)	2	EA	\$19,393.00	\$38,786.00
2 Adhesion Tests for Siphon Inlet & Outlet Rehabilitation	8	EA	\$253.00	\$2,024.00
3 Specification Item E.3.1 - Efforts for cosmetic finish work to provide irregularity free uniform finish, free from trowel marks, voids, depressions, ripples, waves, bubbles, bumps or cracking in the final coating layer using an approved repair method. To provide uniform profile for coating.	1	HR	\$160.00	\$160.00

9 Items to Include with Bid

- 1 Crew Availability, Crew Size, Crew Quantity
- 2 Key Personnel
- 3 Current Workload

10 Project Duration

Time is of the essence. Bidder agrees to complete their own scope of work in the allotted Calendar Days listed above on the bid schedule. Failure to meet this schedule due to non-performance is not acceptable. MH Coating contractor to provide sufficient crews to perform separate work functions in multiple manholes at a time.

11 Total Installation Days - Phases 1 to 6

MH COATING INSTALLATION CALENDARS DAYS 210 Days, 56 day under bypass

12 Bond

Total amount (or percentage) to be added to this Bid if Bidder is required to provide Performance and Payment Bond is _____%. The subcontractor must list their bonding company and agent with a phone number and contact name.

Surety Company: _____

Agent/Firm: _____

Agent Name/Phone Number: _____

13 2nd & 3rd Tier Subcontractors (Subs to Subcontractors)

The following Tiered-Subcontractors are proposed to perform work on this Project. This list is complete and no additional subcontractors shall be allowed on the project site without prior approval:

<u>Company</u>	<u>Phone</u>	<u>Scope of Work</u>
None		
_____	_____	_____
_____	_____	_____
_____	_____	_____
_____	_____	_____
_____	_____	_____

14 Approved Suppliers/Vendors

The following Suppliers/Vendors and Products will be used to complete this Project. This list is complete and no changes shall be allowed prior to approval (CIPP bidder shall include proposed liner design and mill thickness, liner manufacturer and resin supplier below).

<u>Approved Supplier/Vendor</u>	<u>Product/Materials Supplied</u>
Environmental Coatings LLC	Sewer Shield 150, C-120 Underlayment
_____	_____
_____	_____
_____	_____

Manhole Rehab Contractor has included Performance History per the Technical Specifications

Yes ☒ No ☐

15 Insurance

Bidders insurance coverage meets or exceeds the PCRWRD's contract requirements:

Yes ☒ No ☐

The subcontractor must list their insurance company and agent with a contact name and number.

Insurance Company:

Union Ins Company, Copperpoint National Ins

Agent/Firm:

Lebaron & Carroll Insurance

Agent Name / Phone Number:

Brian Carroll, 480-834-9315**16 Pollution Insurance**

CIPP Bidder shall furnish a Contractor's Pollution Liability coverage, with limits of liability no less than \$2,000,000 / event and \$4,000,000 aggregate. Bidders' pollution liability insurance coverage meets or exceeds this requirement.

Yes ☐ No ☐**17 Proposal Documents**

Project Drawings - PCRWRD Project No. 3NRI14 dated 2/05/2013

Technical Specifications - PCRWRD Project No. 3NRI14 dated 2/05/2013

CCTV Pre-Video

NRI As-Builts

ACP CIPP Lining Investigation Videos (Pre & Post Lining)

Manhole Investigation Report performed by Brown and Caldwell

Manhole Investigation Photos of MH Interior

Flow Management Plan provided by B&F Contracting Inc. (Phase 1, 2 & 5)

18 Liquidated DamagesTHERE ARE NO LIQUIDATED DAMAGES**19 Acknowledgments**

Addendum _____ Dated _____

Addendum _____ Dated _____

Addendum _____ Dated _____

Addendum _____

Addendum _____

Addendum _____

Dated _____

Dated _____

Dated _____

Bidder Acknowledgement:

Bidder acknowledges the above addenda and once submitted, this Bid may not be altered, amended or withdrawn for a period of (90) days without prior written consent of B&F Contracting, Inc.

20 Signature

Bidder herein agrees that if awarded the work on the basis of this Bid Proposal, he will enter into and execute a sub-contract agreement with B&F Contracting Inc.

Company / Bidder: Joseph Painting Company, Inc dba
JPCI ServicesSignature: *Becky Duffa*Title: PresidentDate: 11/6/14

Arizona Contractors License No:

ROC199485-KE, ROC218119-A
ROC242450-AE, ROC107144-L34
ROC197873-AE



J P C I SERVICES

Joseph Painting Company, Inc.

4702 E. Virginia Street • Mesa, Arizona 85215-9101

(480) 986-1212 • Fax (480) 380-4461

License No. ROC242450 AE AZ • ROC199485 AE AZ • ROC218119 A AZ

ROC107144 L-34 AZ • ROC197873 AE AZ • 280286 C-33 & A CA

November 13, 2014

B & F Contracting, Inc.

1904 W. Prince Rd.,

Tucson, AZ 85705

Re: Item 9 - JPCI Current Work on Hand and crew size

Our proposal is based on the use of 2 to 4 crews.

Below Ground Sewer Crews;

JPCI Services has Job Order Contract with the City's of Phoenix, Gilbert, Avondale & Queen Creek.

B & F / City of Mesa Manhole Rehabilitation Phase 10

Western Waterworks Broadway Road Manhole Rehabilitation

Felix Construction / Mesa Ivyglenn 3 Manhole Rehabilitations

Felix Construction / Greenfield Sludge Basin Coating

Sincerely,

Beckey Durfee

President

MEMBERS OF

SSPC • AWWA • ASBA • NACE • ACI
A SBE COMPANY



2014

**Statement of Qualifications –
for
Job Order Contracts /
Specialized Equipment, Piping & Infrastructure Coatings**

SOQ Presented to:

SOQ Presented by:

Joseph Painting Company, Inc
dba JPCI Services
4702 E. Virginia Street,
Mesa, AZ 85215-9101
Phone: (480) 986-1212
Fax: (480) 380-4461
www.jpccservices.com



J P C I SERVICES

Joseph Painting Company, Inc.

4702 E. Virginia Street • Mesa, Arizona 85215-9101

(480) 986-1212 • Fax (480) 380-4461

License No. ROC242450 AE AZ • ROC199485 AE AZ • ROC218119 A AZ
ROC107144 L-34 AZ • ROC197873 AE AZ • 280286 C-33 & A CA

May 1, 2014

RE: Cover Letter for Statement of Qualifications - Job Order Contracting
For **Specialized Equipment, Piping & Infrastructure Coatings Projects**

Joseph Painting Company, Inc (JPCI Services) would like to respectfully submit our Statement of Qualifications for Specialized Equipment, Piping & Infrastructure Coatings. As a family owned Painting and Construction Company, started in 1972 and continuing its operations uninterrupted until present day, JPCI Services feels that we can provide our customers with our continued professional and quality driven services.

After moving operations to Arizona in 1979, JPCI Services expanded from the residential and commercial industry into the specialty coatings application and specialty construction services for the water and wastewater rehabilitation, maintenance and construction industry. Under the joint management of the owners, Joseph A Nuciforo Sr and Lois Suzanne Nuciforo and their five children Sharon Fitzpatrick, Beckey Durfee, Larry Nuciforo, Joann DeSa and Joseph Nuciforo Jr, our company currently conducts business with the cities of Phoenix, Mesa, Gilbert, Chandler, Avondale, Goodyear, Scottsdale, Apache Junction, etc. We also provide services to many Utility Enterprises such as Global Water, Ak-chin Indian Tribe, Quechan Indian Tribe, Hopi Indian Tribe and Liberty Water Resources. We have installed specialty coatings for more than 20 years at the Wastewater Treatment Plants of 91st Ave, 23rd Ave, Union Hills and others working directly for the City of Phoenix and through various General contractors.

Our company currently has 29 full time employees, all local, on staff and completes an average of 85 projects a year ranging in value from \$800.00 to \$250,000.00 per project for total average revenues per year of \$3.5 million. JPCI Services has completed projects as a general for amounts in excess of 1,000,000 in size. We have never failed to complete a project and take pride in finding new ways to solve problems to reduce project costs, yet never at the sacrifice of quality and longevity for the client. JPCI has never been terminated nor been involved with litigation against us on any project due to performance, quality or other reasons.

JPCI Services is certified through the City of Phoenix as a Small Business Enterprise. When working as a General we strive to use small, local businesses for our subcontracting and equipment rental needs and purchase most of our sundries in the valley in order to ensure timely receipt of materials. Our coating products for Manhole Rehabilitation are purchased from Environmental Coatings LLC, an Arizona based and registered Limited Liability Company.

JPCI Services, as a local business takes pride in our community and will always work to serve the water and wastewater municipalities in Arizona and to provide the highest quality coatings and construction services.

Sincerely,
Beckey Durfee
President
JPCI Services



TABLE OF CONTENTS

Cover.....	i
5.1G Location & Contact Information & 5.1A Termination/Litigation (N/A)	
Cover Letter	ii
5.1D Total Number of Employees (All Local)	
5.1G Staffing & Commitment to Local Companies	
Table of Contents.....	iii
Qualifications of the Firm.....	1
5.1A Licensing	
5.1C Length of Time in Business	
5.1G Listing of Key Personnel	
5.2C Organization Chart	
Financial Capacity of the Firm	2
5.3A Bonding Capacity (See Letter pg 10, as well)	
5.3B Insurance Coverage	
JPCI Services Project History (Similar Projects).....	2-4
5.1B a-f Similar Project Experience	
5.2A Key Personnel Experience on Similar Projects	
JPCI Services Project History (Schedule Compliance)	5
5.4 History of Schedule Compliance on Similar Projects	
Quality Management Plan 5.5	6
Approach to JOC 5.6	7
General Project Schedule	
Emergency Project Schedule	
Subcontractor Selection Plan	
Resumes of Key Personnel 5.2D	8-9
5.1E Experience in Working with Design Teams	
5.1F Ability to Provide Design and Related Services	
Availability and Capacity	9
5.2B Availability of Key Personnel	
Letter of Bond-ability	10
5.3A Bonding Capacity (confirmation)	
5.3C Bonding Ability	
Letters of Reference.....	11-12



JPCI SERVICES aka Joseph Painting Company, Inc.

**WATER & WASTEWATER
INDUSTRIAL COATINGS • REHABILITATION • INSPECTIONS • REBUILD**

OWNERS / OFFICERS:

Lois Suzanne Nuciforo, CEO, 51% Ownership
Joseph A. Nuciforo Sr., VPO / Secretary, 49% Ownership
Becky Durfee, President, Job Controller, Estimator
Joann M. DeSa, CFO, Estimator
Sharon L. Fitzpatrick, Vice-President/HR Manager
Larry Nuciforo, COO, NACE Class 3 Inspector, Estimator
Joe Nuciforo Jr, COO, Inspector, Estimator

YEARS IN BUSINESS:

Business started in 1972 to present day, 42 years
Incorporated, in Arizona, in November of 1994

KEY PERSONNEL FOR JOC

Becky Durfee – Contracts, Insurance, Bonding, Billing
Larry Nuciforo – Project Manager Plant Operations/Paint
Joe Nuciforo Jr. – Project Manager Manhole Operations
Candido DeLatorre – Job Foreman Manhole Operations
Darin Tsosie – Job Foreman Plant Operations
Danny Deery – CAD Designer
Devon Carr - Safety Officer

TAX NUMBERS / LICENSES / PERMITS:

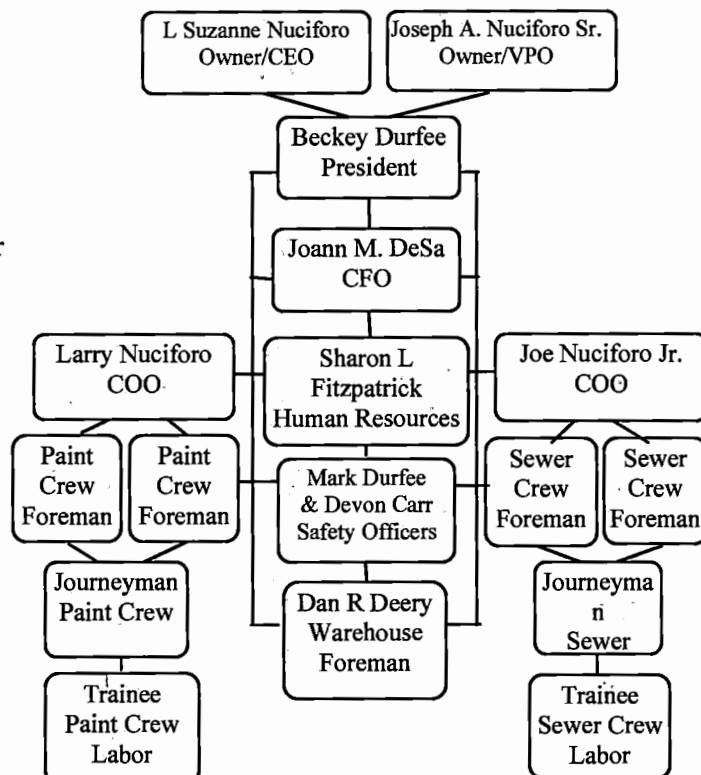
Federal Employer Identification Number: 86-0776020
Arizona State Transaction Privilege Tax License: 07495632-B
City License: City of Phoenix (#95002231)
Maricopa County AQD Permit No.000293, issued 5/30/2001, renews 5/31/2016
US Department of Transportation No. 2072749
Phoenix SBE Certification, renews 02/02/2017

CONTRACTORS LICENSES HELD BY JPCI SERVICES:

Arizona A - General Engineering License No – ROC218119, issued 3/24/2006, renews 3/31/2016
Arizona Painting License L-34 – ROC107144, issued 5/8/1995, renews 4/30/2015
Arizona AE - Wastewater Facility Rehabilitation License – ROC242450, issued 2/17/2008, renews 2/29/2016
Arizona AE - Above & Below Ground Wastewater Build & Rehab License – ROC197873, issued 6/30/2004, renews 6/30/2016
Arizona KE - Commercial & Industrial Maintenance & Repair /
Arizona Specialty Coatings License – ROC199485, issued 8/18/2004, renews 8/31/2016
California Contractor's License – CA No. 280286, C-33 Painting and Decorating &
A-General Engineering Contractor, issued 11/15/1972, renews 9/30/2015
Nevada A-15 Sewers Drains & Pipes Subs - No.0058702, issued 11/2/2004, renews 11/30/2014
Nevada C-4 Painting and Decorating - No.0058579, issued 11/2/2004, renews 11/30/2014

ORGANIZATIONS WE BELONG TO:

NACE – NATIONAL ASSOCIATION OF CORROSION ENGINEERS
ASBA – ARIZONA SMALL BUSINESS ASSOCIATION
WEF – WATER ENVIRONMENT FEDERATION (Locally the AW & PCA, ARIZONA WATER &
POLLUTION CONTROL ASSOCIATION)
SSPC – STEEL STRUCTURAL PAINTING COUNCIL aka the SOCIETY FOR PROTECTIVE COATINGS
ACI – AMERICAN CONCRETE INSTITUTE
AWWA – AMERICAN WATER WORKS ASSOCIATION





JPCI SERVICES aka Joseph Painting Company, Inc.

INSURANCE AND BONDING INFORMATION:

Lebaron & Carroll Insurance;

Ted W Edwards, Surety Agent, (480) 699-4567, Fax (480) 898-7560,

Bonded by Employer Mutual Casualty Company, A- XI A.M. Best Rating, \$2,500,000 single limits, \$4,500,000 Aggregate limit, with considerations on a Job-by-Job basis that may exceed limits stated.

Brian Carroll CIC, Agent, (480) 834-9315, Fax (480) 649-0485,

General, Automobile, Excess Umbrella & Leased/Rental Equipment insurance through Union Insurance Company, Limits 1,000,000/1,000,000/2,000,000 with 5,000,000 excess Liability. Workers Compensation policy by The Travelers Indemnity Company, limits 1,000,000/1,000,000/1,000,000.

TYPES OF WORK PERFORMED:

JPCI Services has 40 years of continuous experience, including industrial coatings, structure rehabilitation and construction services. JPCI Services scope of service also includes;

- Channel Repairs/Coatings
- Coating Application of Interior/Exterior of Buildings
- Coating Inspection Services
- Project Consultation Assistance
- Fire Resistant Coating Application
- Floor Coating Application
- Manhole Inspection Services
- New Manhole Protective Coating
- Pipe Repairs
- Plumbing & Mechanical Equipment Painting & Labeling
- Interior/ Exterior Potable Water Tank Coating
- Sandblasting, all substrates
- Secondary Containment Build & Coating
- Sewer Manhole Rehabilitation & Protective Coating
- Sewer Shield Composite Manhole Insert installation
- Sewer Shield Composite Manhole Installation (Stand Alone)
- Specification Review Design
- New Concrete Manhole Installation
- 'Trouble-Shooting' Services for many Municipalities, Companies & Engineering Firms.
- Wastewater Treatment Plant System rehabilitation & Maintenance
- Water Treatment Facility Coatings & Structural Rehabilitation
- Waterblasting
- Concrete Caulking & Repair
- Manhole Adjustment
- CMU Staining & Waterproofing

JPCI SERVICES PROJECT HISTORY

JPCI Services has always taken pride in completing projects with the highest possible quality, using the best materials possible to give the owners / customers the most longevity and protection while keeping our work force, customer and the public safe. JPCI Services has never failed to complete a project even with the most difficult work conditions, detrimental environmental conditions or restrictive specifications on performance and time.

SAMPLE OF RECENT SIMILAR PROJECTS

10 St. Lift Station Discharge Manhole Rehabilitation			10-1103.05 / PO63042	
For the Rehabilitation of the 10 th St Discharge manhole JPCI Services removed the deteriorated discharge pipe, set internal bypass, rehabilitated and coated the base of the manhole, excavate an 8' x 8' section of the street around the manhole, removed the existing cone, and set a new 5 layer Sewer Shield Composite Insert manhole. A new opening for the discharge pipe was cut and new piping was installed in the discharge manhole. Hydrophobic grout was mixed and installed in the void between composite and existing deteriorated manhole. Slurry was poured after proper compaction was achieved. We completed the project by installing a new ring and cover, concrete collar and the approved asphalt mix.				
Role of Firm:	Prime	Supervisor/Project Manager	Joe Nuciforo Jr	
Construction Cost:	\$34,004.43			
Construction Date:	Started on 7/22/11	Completed 7/29/2011 (Contract days allotted 30 days)		
Project Owner:	City of Avondale Water Services Department			
References:	Mike Yracheta	Project Manager	623-333-4414	myracheta@avondale.org
	Todd Carpenter	Water Reclamation Superintendent	623-333-4434	tcarpenter@avondale.org



JPCI SERVICES aka Joseph Painting Company, Inc.

Gilbert North Water Treatment Plant Basin Metal Coating

PO #41080302

Working directly for the Town of Gilbert's Water Services Department JPCI Services sandblasted all steel in the clarifier basin to a SSPC-SP10 substrate, primed all blasted steel with Tnemec 140 and applied a second finish coat of the Tnemec 140 achieving a final mil thickness of 12 to 16 mils per manufacturer recommendations. After completing the first basin and coming under budget and on schedule JPCI Services, per the owner's direction, continued to complete the same process on 3 more basins.

Role of Firm:	Prime Contractor	Supervisor/Project Manager	Larry Nuciforo
Construction Cost:	\$22,150.45 per Basin	\$88,601.80 Total for all 4 Basins	
Construction Date:	March 11, 2011	Completed fourth basin May 31, 2011	
Project Owner:	Town of Gilbert – Water Services Department		
References:	Rick Kilborn	Water Services Manager	(480)266-6319 rick.kilborn@gilbertaz.gov
	Jason Kerby	Engineering Inspector	(480) 503-6197 jason.kerby@gilbertaz.gov

Manhole Rehabilitation Project Phase 2

WW1003-401

JPCI Services rehabilitated and protective coated 88 concrete and brick manholes using Sewer Shield 150 Trowelable material and rehabbed 13 manholes using Sewer Shield Composite Manhole Inserts. Included in the scope of work was the cleaning, protective coating with fiberglass embedment of 1 corrugated metal pump-back station and the coating and installation of pipe rails, supports piping and hardware. Traffic control services were planned and scheduled for day time work sites as well as night work schedules when available. JPCI Services also discovered and rehabilitated 2 - 6' X 6' X 25' long sewer structures and 1 Junction Box sewer structure discovered during the manhole rehabilitation process. All work was completed under owners budgeted amounts.

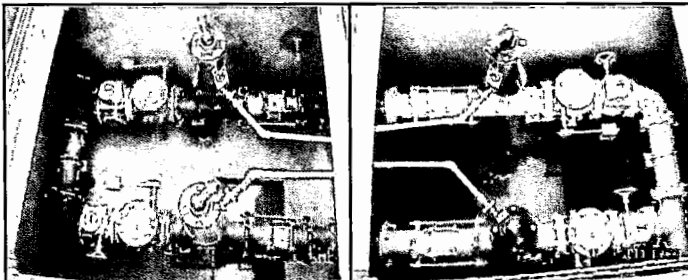
Role of Firm:	Prime Contractor	Supervisor/Project Manager	Joe Nuciforo Jr
Construction Cost:	\$1,135,332.00		
Construction Date:	Started 11/11/2009	Completed 11/12/2010	
Project Owner:	City of Chandler – Water Services Department		
References:	Robert Fortier	Construction Project Manager	480-782-3591 bob.fortier@chandleraz.gov
	Alvin Robertson	Waste Water Supervisor	480-782-3601 alvin.robertson@chandleraz.gov

Mesa Northwest Water Reclamation Plant Improvements

07-010-001

JPCI Services repaired concrete to a solid substrate, sandblasted and coated the headwork's structure, influent junction structure, clarifiers 3 & 4, effluent troughs 3 & 4 and 2 manholes using Sewer Shield 150 Epoxy coating with C-120 Cement Underlayment. Over 7,500 square feet was applied not including the Clarifiers 3 & 4 metal that was sandblasted to a SSPC SP10 near white prep and coated with Tnemec's 435 at a dry film thickness of 18 to 24 mils.

Role of Firm:	Subcontractor	Supervisor/Project Manager	Larry Nuciforo
Construction Cost:	\$510,434.00		
Construction Date:	6/19/2009	Completed 1/19/2010	
Project Owner:	City of Mesa Water Services Department		
References:	Dennis White	Mesa Chief Inspector	(602) 376-3401 dennis.white@mesaaz.gov
	Phil Martel	Mesa Engineering Inspector	(602) 376-3410 phillip.martell@mesaaz.gov





JPCI SERVICES aka Joseph Painting Company, Inc.

Town of Gilbert Manhole Rehabilitation

WW056

JPCI Services, acting as general contractor completed the rehabilitation and protective coating of 26 manholes along Hackamore Road, Cooper Road, CAP Western Canal and at the Neely Wastewater Treatment Plant. The rehabilitation of the manholes included the installation of one Sewer Shield Composite manhole insert in a collapsing manhole located in the drying beds off the Western Canal access road. Traffic control was arranged, supervised and paid for by our company. Work times varied to accommodate residential noise restrictions and flow through plugs were utilized to keep the sewer flows in service during the sandblast, C-120 Underlayment application and the final coat of Sewer Shield 100.

Role of Firm:	Prime	Supervisor/Project Manager	Joe Nuciforo Jr
Construction Cost:	\$341,469.00		
Construction Date:	October 6, 2008	Completed January 9, 2009	
Project Owner:	Town of Gilbert - Water Services Department		
References:	Jason Kerby	Town of Gilbert Engineering	(480) 503-6197 jason.kerby@gilbertaz.gov
	Hondo Judd	Water Services Supervisor	(480) 503-6430 hondo.judd@gilbertaz.gov

Mesa Wastewater Diversion Structures Rehabilitation

01-687-004

JPCI Services completed the sandblast preparation and coating of 2 Diversion Structures including the construction of benches to improve sewer flows and install diversion gates, the installation of lifting hardware and safety devises. Traffic Control was subcontracted out to local firm. Notification was provided by JPCI Services. Redline drawings were issued with warranties upon completion of project. JPCI Services completed the project in 22 of the 30 days allotted for the project and received a 98.7% approval rating achieving a superior project evaluation with City of Mesa Engineering.

Role of Firm:	Prime	Supervisor/Project Manager	Joe Nuciforo Jr
Construction Cost:	\$86,389.00		
Construction Date:	11/10/2009	Completed 12/2/2009	(Contract allotted for 30 Days completion)
Project Owner:	City of Mesa- Engineering		
References:	Dennis White	Mesa Chief Inspector	(602) 376-3401 dennis.white@mesaaz.gov
	Keith Korch	Mesa Construction Inspector II	(602)376-1805 Keith.Korch@mesaaz.gov

91st Ave WWTP Sodium Bisulfate Containment

JOC 066

JPCI Services completed the sandblast preparation and coating of 900 square feet on the exiting sodium bisulfate containment area located at 91st Ave Wastewater Treatment Plant using Tnemec Coating Products. Surfaces were prepared and coated using Tnemec's re-surfacer Mortar-Clad 218, mat reinforced coating system Power-Tread 237 and top coat with Tnemec-Glaze 280. Work was completed through Currier Contractors as part of a JOC.

Role of Firm:	Subcontractor	Supervisor/Project Manager	Larry Nuciforo
Construction Cost:	\$9,216.00		
Construction Date:	6/19/2009	7/2009	(part of JOC Contract)
Project Owner:	City of Phoenix- 91 st Ave Water Services Department		
References:	William Williams	91 st Ave WWTP Manager	(602) 534-6217
	Richard Kopchynski	Water Works Engineers	(480) 661-1742

Scottsdale C.A. P. WTP Expansion – 2 Bulk Chemical Storage Areas

JPCI Services sandblasted and coated two bulk chemical containment storage areas totaling 3500 Square Feet at the Scottsdale CAP Water Treatment Facility. Surfaces were prepared and coated using Tnemec's re-surfacer Mortar-Clad 218, mat reinforced coating system Power-Tread 237 and top coat with Tnemec-Glaze 280.

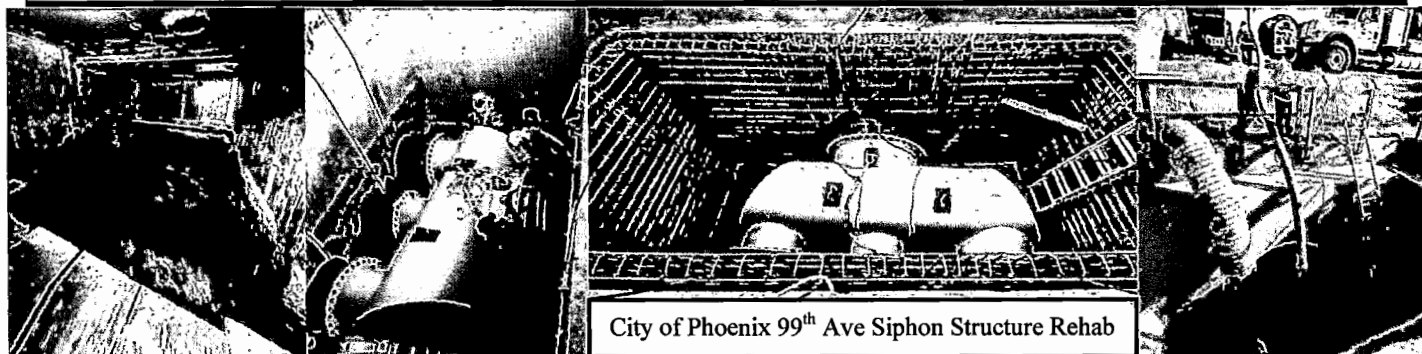
Role of Firm:	Subcontractor	Supervisor/Project Manager	Larry Nuciforo
Construction Cost:	\$86,485.00		
Construction Date:	2/16/2008	3/2008	
Project Owner:	City of Scottsdale – Water Services Department		
References:	Chuck Hill	City of Scottsdale	(480) 312-5881
	Ed Martin	Malcolm Pirnie, Inc	(602) 267-1015



JPCI SERVICES aka Joseph Painting Company, Inc.

SAMPLE OF LARGEST CONTRACTS COMPLETED ON TIME: (More Projects available upon request)

Owner's Name		Contact / Phone Number Owners Address	JPCI Contract Amount	Time to Complete
Job Description				Start & End Date
1.)	Cit of Phoenix-99th Ave Interceptor Sewer Siphon Structure Improvement WS90160076	Patty O'Leary Kennedy, P.E./ 602-262-7518 200 West Washington St, Phoenix, AZ 85003	\$896,284.00	180 days
JPCI Services partnered with Quest Civil Contractors to complete the rehabilitation & protective coatings of 2 large 66" Inlet & Outlet Structures. Joe Nuciforo Jr working as project manager for JPCI, designed an internal bypass system to allow for the sewer structures to remain in services during the rehabilitation & coating process saving the City of Phoenix the need and cost of building a external bypass bridge over the SRP Canal at 99 th Ave, Phoenix, AZ.				9/2009 11/2009
2.)	Phoenix-PVC Lined Concrete Sewer Manhole Rehab. WS90160039	Patty O'Leary Kennedy, P.E. /602-262-7518 200 West Washington St, Phoenix, AZ 85003	\$534,838.00	180 days
JPCI Services working for, the CM@Risk contractor Achen-Gardner Contracting, rehabilitated & Protective Coated 56 manholes using Sewer Shield 100 and installed 1 Sewer Shield Composite Manhole Inserts for the City of Phoenix along Southern Ave.				1/2007 7/2007
3.)	Phoenix-PVC Lined Concrete Sewer Manhole Rehab. WS900500 115	Patty O'Leary Kennedy, P.E. /602-262-7518 200 West Washington St, Phoenix, AZ 85003	\$678,818.17	270 days
JPCI Services working for, Achen-Gardner as the CM@Risk Contractor, rehabilitated & Protective Coated 51 manholes using Sewer Shield 100 & installed 15 Sewer Shield Composite Manhole Inserts.				11/2006 7/2007
4.)	Mesa-101 Hwy & Baseline Inlet, Outlet & Channel Structure Rehab	Peter Knudson / 480-644-2253 PO Box 1466, Mesa, AZ 85211	\$466,934.00	120 days
JPCI Services working through B & F Contracting completed the rehabilitation and coating of several existing structures along Hwy 101 & Baseline Road. The Inlet & Outlet Siphon Structures, Channels, Metering Vault entrance and 3 manholes were cleaned, sandblasted and coated using Sewer Shield 150. JPCI crews also installed hardware, grating and ladders upon completion of the rehabilitation process.				1/8/2008 6/2008
5.)	City of Phoenix-Reservoir 1-ES3 Roof Rehabilitation & Misc. Repairs	Rick Shane / 602-534-8352 200 W Washington St, 7th, Phoenix, AZ 85003	\$619,393.00	120 days
JPCI Services prepared, sandblasted/hand sanded, repaired and coated various locations of the concrete columns, rebar, deteriorated metal and inlet/outlet structures of a 30 million gallon potable water tank. Work on the tank was contracted through Quest Civil Contractors.				8/2008 2/2009
6.)	City of Mesa-Northwest Water Reclamation Plant Improvements	Dennis White / 480-644-4224 PO Box 1466, Mesa, AZ 85211	\$510,434.00	150 days
Larry Nuciforo, Estimator & Project Manager of JPCI Services ran several of his crews during the sandblasting of surfaces preparation, repair of rebar as needed, applying of a C-120 cementitious underlayment to rebuild deteriorated concrete areas and protective coating of structures using Environmental Coatings - Sewer Shield 150 Trowelable epoxy coatings on the Headwork's, wire walls, cannels and manholes of the Mesa Northwest Water Reclamation Plant. The metal structures in the 4 clarifiers were sandblasted and coated using Tnemec products.				7/2009 11/2009



City of Phoenix 99th Ave Siphon Structure Rehab



QUALITY MANAGEMENT PLAN

JPCI Services uses the highest quality products and maintains the highest level of quality in our application processes and services. The products we use and the work that we perform is constantly monitored and tested to ensure that the highest quality is being provided to our customers.

PRODUCT

JPCI Services uses the Sewer Shield Product line for manhole rehabilitation. The Sewer Shield Products have been successfully used in manhole rehabilitation and new structures for over 25 years. These products have been successfully installed in California, New Mexico, Colorado, Oregon and extensively throughout Arizona. JPCI Services personally inspects various manholes years after coating was completed to ensure that the coating continues to perform to specifications.

TRAINING

Field personnel are thoroughly trained on all equipment, safety and material usage upon hire. All field employees go through yearly safety refresher courses and weekly tailgate meetings. Employees are also regularly instructed and monitored on the particular equipment and material handling for each job throughout the course of the project.

SUPERVISION

A Job Supervisor/Foreman is present on the jobs for the entire time that our employees are on the job. The Job Superintendent/Foreman is trained to constantly monitor the work being performed and evaluate the quality continuously throughout the day.

A COO will visit the job several times throughout each week to monitor progress and quality. Our COO's are our most experienced employees and have been with our company a minimum of 25 years each. The COO will also regularly speak with our client's representative to ensure that they are satisfied with the progress and quality.

TESTING

Depending on the nature of the job, Low Voltage Spark Testing, Pull Testing and/or Mil Gauge Reading will be done as phases of a project are completed. The testing is done to ensure that our work is done to manufacturer specifications and is of the highest quality. Any discrepancies that may arise are addressed immediately.

At the completion of the project, or at any time requested by the client, testing will be repeated in the presence of a client representative to obtain client acceptance and ensure them of the quality of work being preformed.



PROJECT MANAGEMENT APPROACH

Projects are grouped into General Scheduled Project and Emergency Projects

General Scheduled Projects are processed as follows:

- JPCI Services is contacted by the owner and a meeting at the Job site is scheduled
- Upon review of the work description from the owner and the work site, a project overview is created.
- A JPCI Services Job number is issued for tracking.
- If subcontractor(s) are necessary for the project, initial contact is made to start the project cost estimation.
- A tentative scope, schedule and estimate of costs are created, including possible issues for discussion and a subcontractor list.
- Upon owner review, items of concern of the owner are addressed in writing.
- Once owner approves JPCI Services proposal and upon issuance of a purchase order and/or contract from the owner, the project schedule is finalized, materials are purchased and subcontractors, if needed are notified, insurance and subcontracts are completed.
- Should owner request a pre-construction meeting, a meeting location and time will be arranged with all parties. Should the owner forgo a pre-construction meeting, JPCI Services will arrange a job site meeting with a scope overview for all employees, subcontractors and owners representative. JPCI Services safety meeting may follow job site overview meeting.
- Small projects completed in a 30 day period are billed on one invoice (unless arrangements are made to the contrary in advance). Projects being completed in phases will be billed in 30 day increments.
- Final closeout documents will be issued after completion of project and include project summary, before and after pictures and warranties.

Emergency Projects are processed as follows:

- JPCI Services is contacted by the owner and arranges to meet at the job site, problem is assessed, a scope is created and a crew diverted from non-pressing work.
- Time and materials are tracked and Owner is notified of corrective measures with photo documentation and/or job site visit and review.
- Billing is issued to owner with appropriate paperwork as soon as possible. Owner is notified of any pending costs unavailable in such a quick turnkey process.

Subcontractor Selection Plan

Although JPCI Services is capable of covering almost all areas of construction required, we do recognize that there are companies more suited for certain circumstances. As such, we request proposals from multiple sources and evaluate the proposals based on several criteria. The main points for our evaluations are as follows:

- | | |
|-------------|-------------------------------------|
| • Licensing | • Insurance |
| • Safety | • Pricing |
| • Location | • Performance History (5 years min) |

While pricing is important, ensuring that schedules are met and met according to specifications is of equal importance. We have used various subcontractors in the past and those that are reliable and reasonably priced will be selected for emergency work. Any project that has sufficient time allowed, Requests for Proposal will be faxed to subcontractors in a particular area as listed in good standing with the Arizona Registrar of Contractors and Arizona Corporation Commission as applicable.



JPCI SERVICES aka Joseph Painting Company, Inc.

PERSONNEL EXPERIENCE & QUALIFICATIONS

BECKEY DURFEE

- | | | |
|---------------------------|-------------------------|-----------------|
| • Contracts Administrator | • Project Estimating | Since 1986-1994 |
| • Accounts Receivable | • Bonding Administrator | 2001 - Present |

PROFESSIONAL TRAINING

- | | |
|----------------------------------|------------------------------------|
| • Estimating Practices | • Respirator and Fit Test Training |
| • CPR Training | • Fork Lift Operator and Trainer |
| • Blood Bourne Pathogen Training | • Confined Space Training |
| • E-Stake Management User | |

LARRY NUCIFORO

Superintendent / Chief Operations Officer for Joseph Painting Company, Inc. Since 1983

Senior Trainer for Environmental Coatings LLC Since 2004

Senior Trainer for Sewer Shield Composites Since 2004

PROFESSIONAL TRAINING

- | | |
|---|--|
| • NACE Certified Coating Inspector – Level 3 #25089 | • Blood Bourne Pathogen Training |
| • Certified Scuba Diver, 1992 | • Sewer Line Video Equipment Handling |
| • U.S. Department of Labor 30 Hour OSHA Training Course | • Scaffold and Ladder Set-up and Safety |
| • Confined Space Training as Attendant, Entrant & Supervisor (renewed annually) | • Respirator and Fit Test Training |
| • CPR Training | • Plural Component Pump Handling |
| • Tinker & Rasor AP/W Holiday Detector Training | • Fork Lift Operator and Trainer |
| • Microsoft Project Management Program User | • DeFelsko Positest Adhesion Tester Training |

JOSEPH A. NUCIFORO JR

Superintendent / Chief Operations Officer for Joseph Painting Company, Inc. 1986

Senior Trainer for Environmental Coatings LLC Since 2004

Senior Trainer for Sewer Shield Composites Since 2004

PROFESSIONAL TRAINING

- | | |
|---|---|
| • U.S. Department of Labor 30 Hour OSHA Training Course | • Sewer Line Video Equipment Handling |
| • Confined Space Training as Attendant, Entrant & Supervisor (renewed annually) | • Scaffold and Ladder Set-up and Safety |
| • CPR Training | • Respirator and Fit Test Training |
| • Blood Bourne Pathogen Training | • Plural Component Pump Handling |
| • Experience with Sewer Flow Management | • Tinker & Rasor AP/W Holiday Detector Training |
| • Certified Scuba Diver, 1992, Class A CDL with Tank Endorsement, 2005 | • DeFelsko Positest Adhesion Tester Training |
| • Commercial Drivers Licensed | • Fork Lift Operator and Trainer |
| | • Microsoft Project Management Program User |
| | • American Concrete Institute, 548 Board Member |

DANNY DEERY

Joseph Painting Company, Inc. Foreman 4/28/2008

Design & Build for Sewer Shield Composites Since 2008

PROFESSIONAL TRAINING

- | | |
|--|---|
| • Trained in Design CAD Software | • Scaffold and Ladder Set-up and Safety |
| • Confined Space Training as Attendant, Entrant, and Supervisor (renewed annually) | • Respirator and Fit Test Training |
| • Blood Bourne Pathogen Training | • Plural Component Pump Handling |
| • Experienced Welder and Welding Trainer | • Tinker & Rasor AP/W Holiday Detector Training |
| • Training completed on 0-30 ton forklift, Bobcat, Air Tugger, BM Crane, Boom Truck & Gantry crane | • DeFelsko Positest Adhesion Tester Training |
| | • Fork Lift Operator and Trainer |



JPCI SERVICES aka Joseph Painting Company, Inc.

CANDIDO DE LATORRE

Joseph Painting Company, Inc. Foreman

8/28/2007

PROFESSIONAL TRAINING

- Confined Space Training as Attendant, Entrant, and Supervisor (renewed annually)
- Blood Borne Pathogen Training
- Certified Sewer Shield Applicator
- Fork Lift Operator and Trainer
- Scaffold and Ladder Set-up and Safety
- Respirator and Fit Test Training
- Tinker & Razor AP/W Holiday Detector Training
- DeFelsko Positest Adhesion Tester Training
- Trained Sandblaster

DARIN TSOSIE

Joseph Painting Company, Inc. Foreman

10/27/2004

PROFESSIONAL TRAINING

- Certified Sewer Shield Applicator
- Confined Space Training as Attendant, Entrant, and Supervisor (renewed annually)
- Blood Borne Pathogen Training
- OSHA Hazardous Waste Operations Training
- Trained to Operate CME Drill rigs, Earth Probe, Bucket Loader, Welder
- Scaffold and Ladder Set-up and Safety
- Respirator and Fit Test Training
- Plural Component Pump Handling
- Tinker & Razor AP/W Holiday Detector Training
- DeFelsko Positest Adhesion Tester Training
- Fork Lift Operator and Trainer
- Trained Sandblaster

DESIGN TEAM EXPERIENCE & ABILITY

On all projects JPCI Services has had to work closely with engineers and often provide drawings to municipalities and engineers on existing structures, modifications, and by-passing solutions as indicated on page 5 "Sample of Largest Contracts Completed on Time" Item 1 when Joe Nuciforo Jr. designed the internal bypassing that eliminated the need for the City of Phoenix to build extensive external bypassing structures over the SRP Canal at 99th Avenue. Joe Nuciforo Jr. came up with the plan, drew the diagrams and worked with the company that manufactured the bladders for the bypassing. Larry Nuciforo as a NACE Level 3 Inspector, inspected a treatment plant in Nevada, provided recommendations for solutions for severe substrate issues they were having and protective coating recommendations.

JPCI Services utilizes Dan Deery and TurboCad to prepare drawings for any design needed by Larry Nuciforo and Joe Nuciforo Jr. in order to demonstrate a problem and provide the solution. Dan Deery has done manhole drawings for various municipalities that demonstrate areas of corrosion and then recommended solutions. Using Joe Nuciforo Jr.'s designs for an oil containment unit, Dan Deery used our CAD software to draw the diagrams for the client. Joe Nuciforo Jr. and Larry Nuciforo have both designed unique safety equipment that Dan Deery has drawn up and some have even received acceptance from OSHA and the City of Phoenix Fire Department.

JPCI Services has also worked closely with engineering firms such as Dibble & Associates, PEC and GHD Engineers to obtain stamped drawings as necessary.

AVAILABILITY AND CAPACITY

JPCI Services currently employs approximately 29 people, which have been more than satisfactory to complete our work load, as well as handle emergency services for cities such as City of Phoenix. We also have in house training tools and equipment if a need arises to hire anyone immediately. We have used staffing services in the past; however, we prefer to keep it to a minimum as we must ensure that training meets our requirements. Field Management and Office Management meet weekly to discuss project schedules and any staffing or equipment needs in order to ensure that we are providing the best service possible to our clients.

All employees are trained in all areas. If someone is sick or on vacation, someone else can pick up, this includes supervisors and foreman.

PERFORMANCE HISTORY

INFORMATION REQUIRED FROM SUCCESSFUL BIDDER ONLY
(MUST BE COMPLETED AND SUBMITTED AFTER THE BID
OPENING)

PERFORMANCE HISTORY FOR THE APPLICATION OF THE SPECIFIED OR SIMILAR
COATING SYSTEM IN SANITARY SEWER STRUCTURES:

(Attach additional sheets as necessary.)

1. Contractor Name: JPCI Services
Project: City of Phoenix Job Order Contract
Date: Completion 10/1/2014
Locations: 99th Ave & Thomas Rd., Camelback Rd., Bethany Home Rd.
Client: City of Phoenix, Water Services Department
Client Phone No.: Steve Fernandez (602)495-0724
Material Applied: C-120 Underlayment & Sewer Shield 100
Failures and Remedial Action: None
2. Contractor Name: JPCI Services
Project: City of Chandler Manhole Rehabilitation WW1205-401
Date: Completed March 15, 2014
Locations: 39 Composite Manholes & 12 Coated Manholes - Various Location
Client: City of Chandler, Water Services Department
Client Phone No.: Russell Slotnick 480-782-3411
Material Applied: C-120 Underlayment & Sewer Shield 150 & Sewer Shield Composites
Post-Completion Failures and Remedial Action: None
3. Contractor Name: JPCI Services
Project: Town of Gilbert Manhole Rehabilitation JOC
Date: Completed Task December 30, 2013
Locations: Rehabilitation of 5 manholes on Ray Rd.
Client: Town of Gilbert, Water Services Department
Client Phone No.: Hondo Judd 480-503-6430
Material Applied: C-120 Underlayment & Sewer Shield 150
Post-Completion Failures and Remedial Action: None
4. Contractor Name: B & F Contracting
Project: Phoenix 7D & 8A
Date: Completed March 30, 2013
Locations: Protective Coating of 18 MH's, New & Existing, Camelback Rd.
Client: City of Phoenix, Water Services Department
Client Phone No.: Steve Fernandez (602)495-0724
Material Applied: Sewer Shield 100
Post-Completion Failures and Remedial Action: None
5. Contractor Name: JPCI Services
Project: City of Avondale Manhole Rehabilitation Project
Date: Completed October 30 2012
Locations: Rehabilitation of 10 MH's & 1 vault, Broadway Rd., Avondale
Client: City of Avondale, Water Services Department
Client Phone No.: Michael Yracheta (623) 764-2513
Material Applied: C-120 Cement Underlayment & Sewer Shield 150
Post-Completion Failures and Remedial Action: None