



## **BOARD OF SUPERVISORS AGENDA ITEM SUMMARY**

*Requested Board Meeting Date: April 1<sup>st</sup>, 2014*

---

### **ITEM SUMMARY, JUSTIFICATION &/or SPECIAL CONSIDERATIONS:**

A proposed water line and an electrical distribution line to serve the Rosemont Mine will impact 7.09 acres of Regulated Riparian Habitat including 1.61 acres of Important Riparian Area with underlying Xeroriparian Class B (IRA/X B), 1.95 acres of Important Riparian Area with underlying Xeroriparian Class C (IRA/X C), 0.99 acres of Xeroriparian Class B and 2.54 acres of Xeroriparian Class C habitat. The applicant is subject to compliance with Chapter 16.30 of the Pima County Floodplain Management Ordinance No. 2010-FC5 (Ordinance). The applicant is proposing to mitigate the disturbance through contribution of an In-Lieu Fee (ILF). When Regulated Riparian Habitat disturbance will be mitigated through contribution of an ILF, the mitigation proposal requires Flood Control District Board of Directors (Board) review and approval.

In order to comply with the Ordinance, the applicant is submitting a Riparian Habitat Mitigation ILF Proposal for approval by the Board. The ILF has already been received by the District. The Proposal must be approved prior to placement of the ILF in the mitigation bank and approval of the Floodplain Use Permit.

*CONTRACT NUMBER (If applicable): N/A*

---

### **STAFF RECOMMENDATION(S):**

The ILF proposal presented conforms to the Ordinance and as such can be approved.

CLERK OF BOARD USE ONLY: BOS MTG. \_\_\_\_\_

ITEM NO. \_\_\_\_\_

PIMA COUNTY COST: 0.0 and/or REVENUE TO PIMA COUNTY: \$ 145,230

FUNDING SOURCE(S): N/A  
(i.e. General Fund, State Grant Fund, Federal Fund, Stadium D. Fund, etc.)

**Advertised Public Hearing:**

☐

YES

☒

NO

**Board of Supervisors District:**

1 ☐

2 ☒

3 ☐

4 ☒

5 ☐

All ☐

**IMPACT:**

**IF APPROVED:**

If the Board approves the In Lieu Fee proposal, an amount of \$ 145,230 will be contributed to the Mitigation Bank and the development will be in compliance with the Ordinance.

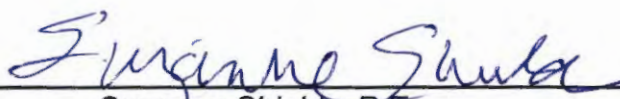
**IF DENIED:**

The Floodplain Use Permit will be delayed until the applicant provides an alternative onsite and/or offsite riparian habitat mitigation plan that meets all Ordinance requirements.

DEPARTMENT NAME: Regional Flood Control District

CONTACT PERSON: Eric Shepp/Patricia Gilbert TELEPHONE NO.: 4-4610/4606

DIRECTOR'S SIGNATURE: \_\_\_\_\_

  
Suzanne Shields, P.E.





---

# MEMORANDUM

Director's Office  
Regional Flood Control District

---



DATE: March 13, 2014

TO: Flood Control District Board of Directors

FROM: Suzanne Shields, P.E.  
Director

SUBJECT: Approval of Mitigation Banking Plan for a Water Line and Electrical Distribution Line for Rosemont Copper Located within Important Riparian Area with underlying Class B and C, Xeroriparian B and Xeroriparian C Habitat (District 2 and 4)

---

## Background

Chapter 16.30 of the Pima County Floodplain Management Ordinance No. 2010-FC5 (Ordinance) requires mitigation for mapped riparian habitat disturbances greater than 1/3 acre. If a project site contains suitable area(s) for riparian restoration, enhancement, or establishment, onsite mitigation occurs in accordance with the adopted *Regulated Riparian Habitat Mitigation Standards and Implementation Guidelines*. The Ordinance contains a provision for mitigation banking, when on-site mitigation is not feasible. All offsite mitigation proposals require Flood Control District Board of Directors (Board) review and approval. The water line and electrical distribution line for Rosemont Copper will disturb 7.09 acres of regulated riparian habitat, including 1.61 acres of Important Riparian Area with underlying Xeroriparian Class B (IRA/X B), 1.95 acres of Important Riparian Area with underlying Xeroriparian Class C (IRA/X C), 0.99 acres of Xeroriparian Class B and 2.54 acres of Xeroriparian Class C habitat.

## Report

Rosemont Copper is proposing to construct a water delivery system and electrical distribution line in support of the Rosemont Copper Project on property shown on Exhibit A. The property contains Important Riparian Area with underlying Xeroriparian Class B (IRA/X B), Important Riparian Area with underlying Xeroriparian Class C (IRA/X C), Class B and C Xeroriparian habitat. (Exhibit B). The owners hired Westland Resources, to assess the project site for suitable on-site mitigation. As a result of finding none, Rosemont is proposing to contribute \$145,230 in lieu of onsite habitat mitigation. The project site contains 7.09 acres of mapped riparian habitat; all of the habitat will be disturbed by construction of the water line and electrical distribution line.

The ILF has already been submitted to the District, and is awaiting Board action before placement in the mitigation bank.

**Approval of Mitigation Banking Plan for a Water Line and Electrical Distribution line for Rosemont Copper Located within Important Riparian Area with underlying Class B and C, Xeroriparian B and Xeroriparian C Habitat (District 2 and 4)**

March 13<sup>th</sup>, 2014

Page 2

**ILF Calculation Spreadsheet**

**Total Riparian Disturbance: 7.09 acres**

Disturbance by class;

1.61 acres IRA/X B,

1.95 acres IRA/X C,

0.99 acres of XB, and

2.54 acres of XC.

Flat fee table for Development Review projects

	XA	XB	XC	XD	IRA/H, H	IRA/XA	IRA/XB	IRA/XC	IRA/XD
Cost per Acre	\$17,000	\$16,000	\$14,000	\$12,000	\$40,000	\$30,000	\$28,000	\$25,000	\$22,000

1.61 acres IRA/X B = \$45,080

1.95 acres IRA/X C = \$48,750

0.99 acres of XB = \$15,840

2.54 acres of XC = \$35,560

Total In-lieu Fee = \$145,230

**Recommendation**

Acceptance of mitigation banking funds in-lieu of onsite mitigation is allowed under the Ordinance.

Contributions to the mitigation bank for disturbance of this habitat will provide funds to be used toward purchase of high value resources or towards restoration of degraded riparian habitat within Pima County.

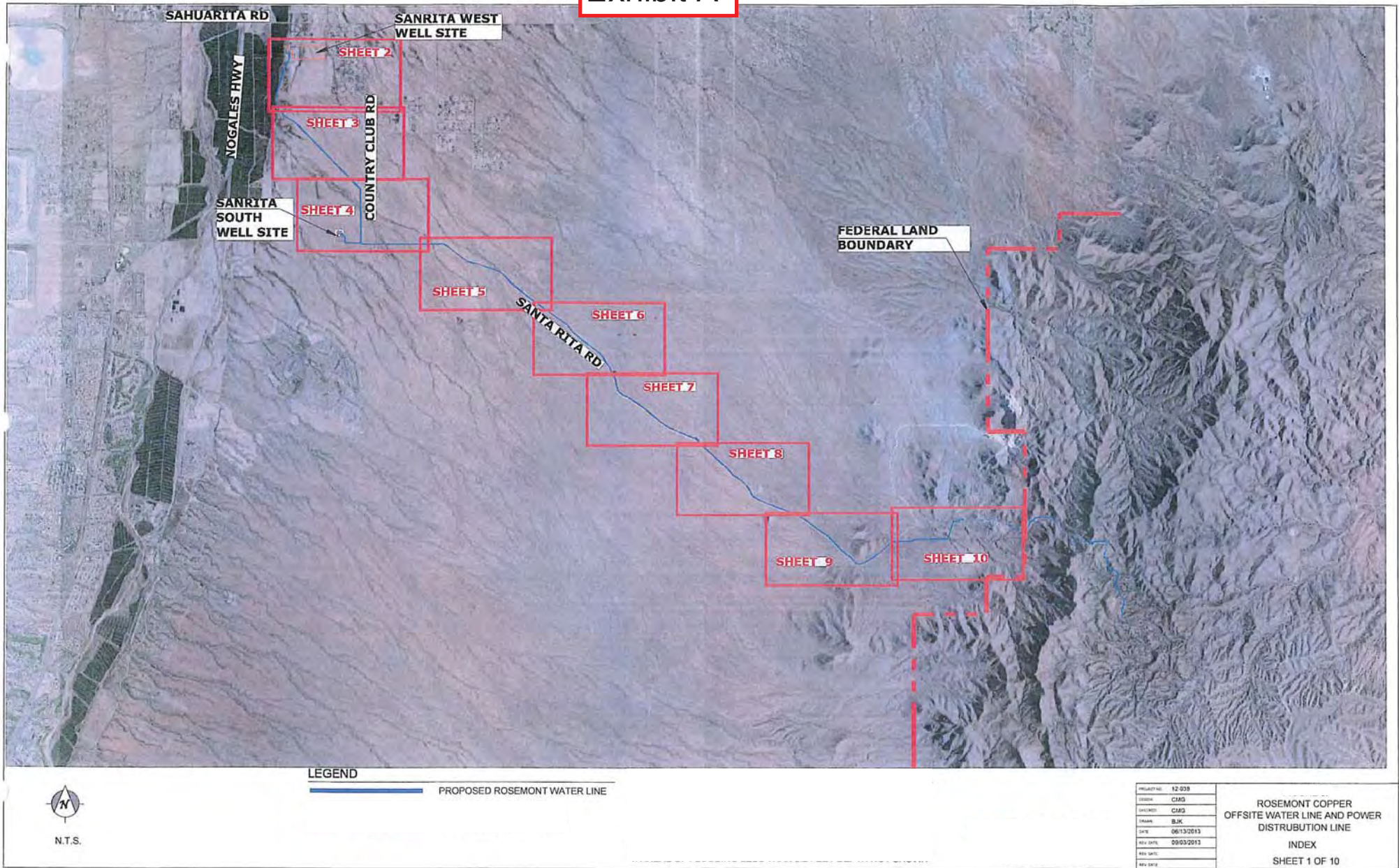
Respectfully submitted,

Suzanne Shields, P.E., Director  
Pima County Regional Flood Control District

Attachments:      Exhibit A – Project Location  
                         Exhibit B – Riparian Habitat Mitigation Plan



# Exhibit A





## Exhibit B

# ROSEMONT COPPER PROJECT

## Regulated Riparian Habitat Mitigation Plans

### PROJECT DESCRIPTION

Rosemont Copper Company (Rosemont) proposes to construct a new fresh water delivery system (pipeline) in support of the Rosemont Copper Project (Project). As shown on Sheet G 0.1 of the attached plans, this proposed pipeline will extend from east of the Town of Sahuarita to the proposed Project site. The total length of the proposed pipeline is approximately 15 miles and, as illustrated on Sheet G 0.1, it would parallel existing public roads for most of its length. A typical section is provided in Detail 1, Sheet G 0.1.

### REGULATED RIPARIAN HABITAT

The Pima County Riparian Habitat Classification Maps (2005) depict four classes of Regulated Riparian Habitat that would be impacted by construction of the proposed pipeline: Xeroriparian Class B (XB), Xeroriparian Class C (XC) and Important Riparian Areas with underlying XB and XC (IRA/XB and IRA/XC). The number of acres of each class that would be disturbed is summarized below in Table 1.

Table 1. Summary of impacts to Pima County-designated Regulated Riparian Habitat resulting from construction of pipeline.

Riparian Classification	Disturbed Acres
XB	0.99
XC	2.54
IRA/XB	1.61
IRA/XC	1.95

The alignment of the proposed pipeline and the limits of disturbance to the Regulated Riparian Habitats are illustrated in the attached plans. Impacts are only considered up to the boundary of the Coronado National Forest. During December 2012, January 2013, and March 2013, Westland Resources, Inc. (Westland), reviewed the proposed alignment and visited each of the riparian habitats that would be impacted by the proposed construction. Selected photographs from that review are included on the attached plan sheets.

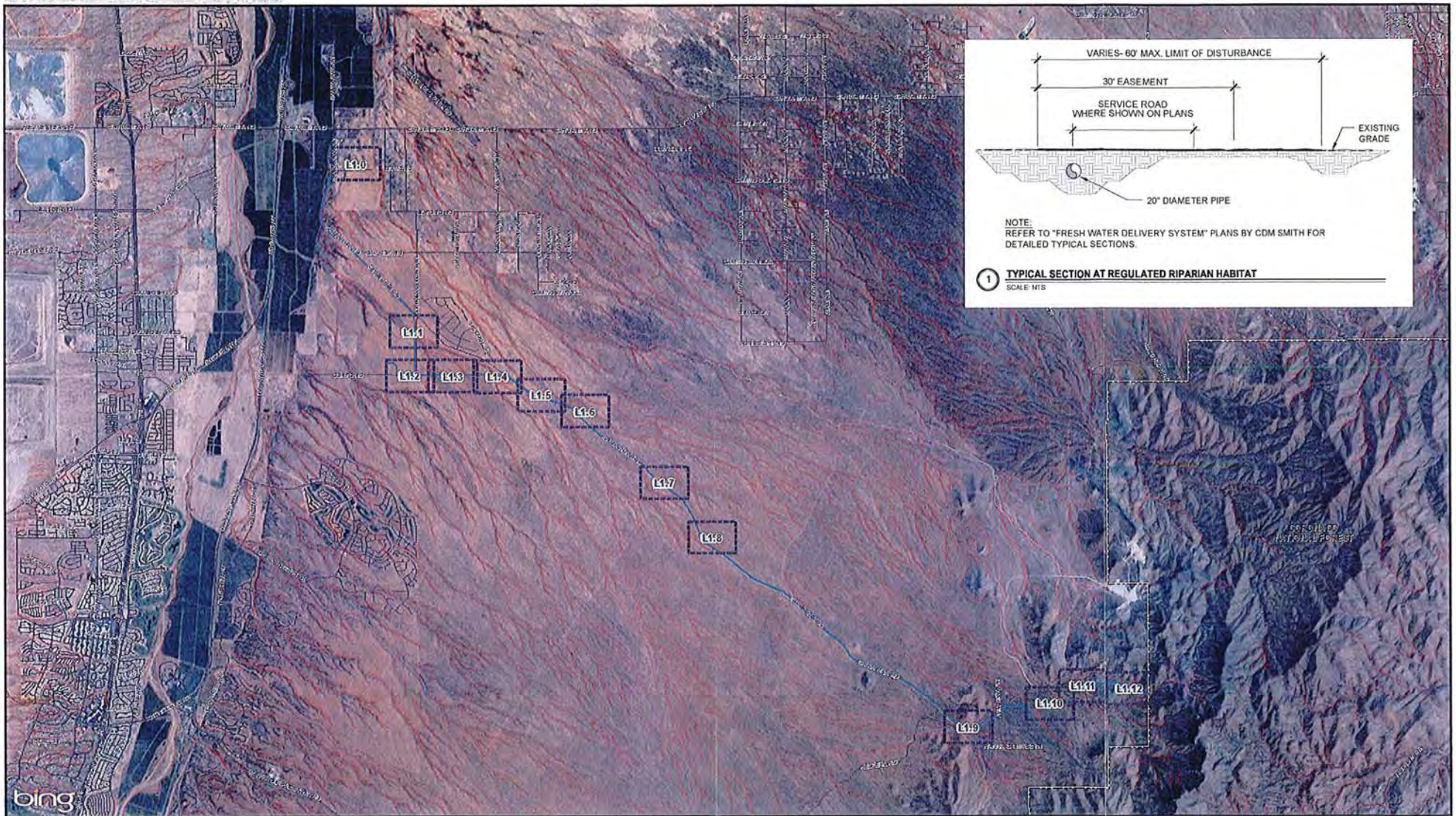
Mitigation for unavoidable impacts of the xeroriparian habitat will be provided through riparian habitat mitigation measures developed for the larger Rosemont Copper Project.

Monitoring for invasive species within the project area will be incorporated into the invasive species monitoring effort for the larger project area. The monitoring of the pipeline project area will continue for five (5) years from the completion of the installation of the pipeline, per the requirements of the Pima County Regional Flood Control District.



T17S, R14E, Portion of Sections 17-20, 27-29 & 32-35  
T18S, R14E, Portion of Sections 1, 2 & 12,  
T18S, R15E, Portion of Sections 7, 17, 18 & 20-23  
Pima County, Arizona.  
Corona de Tucson, Empire Ranch, Helvetia & Sahuarita  
USGS 7.5' Quadrangles





WestLand Resources, Inc.  
Tucson • Phoenix • Flagstaff  
4001 S. Roubidoux Falls Drive  
Tucson, Arizona 85712 (520) 208-9585

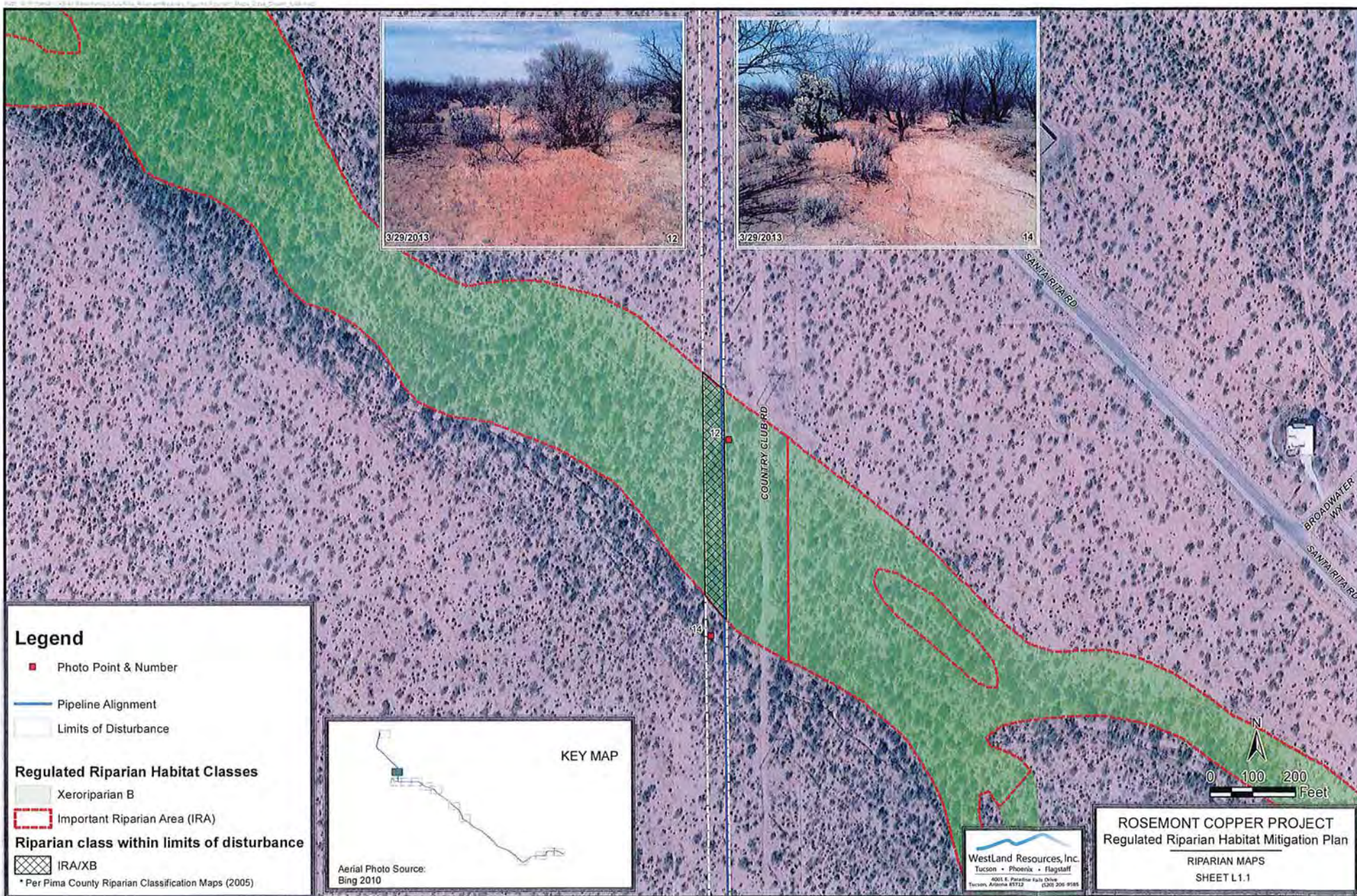
T17S, R14E, Portion of Sections 17-20, 27-29 & 32-35  
T18S, R14E, Portion of Sections 1, 2 & 12  
T18S, R15E, Portion of Sections 7, 17, 18 & 20-23  
Pima County, Arizona,  
Photo Source: Bing 2010

0 6,000 12,000  
Feet



ROSEMONT COPPER PROJECT  
Regulated Riparian Habitat Mitigation Plan  
KEY SHEET  
SHEET G 0.1

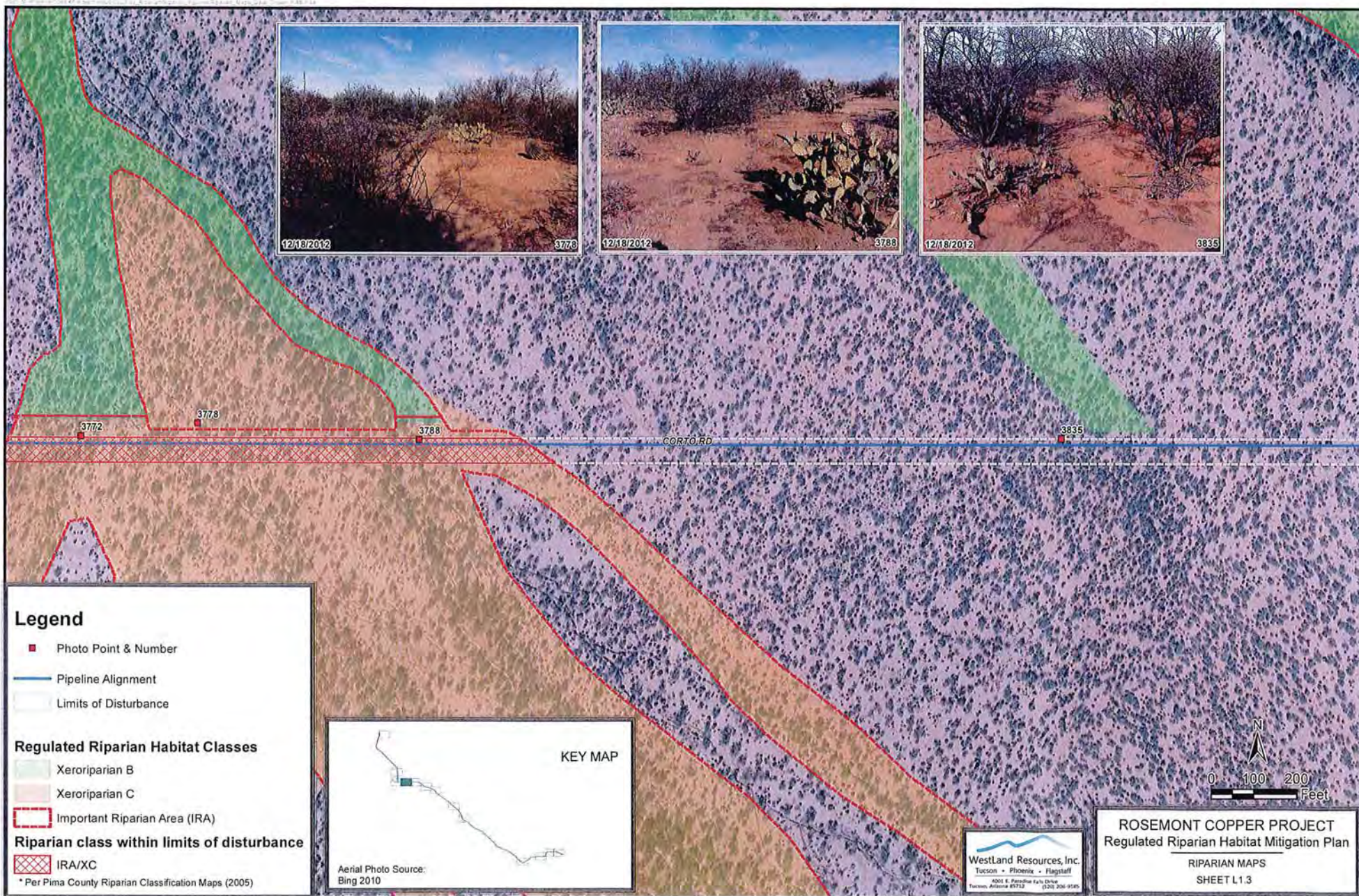




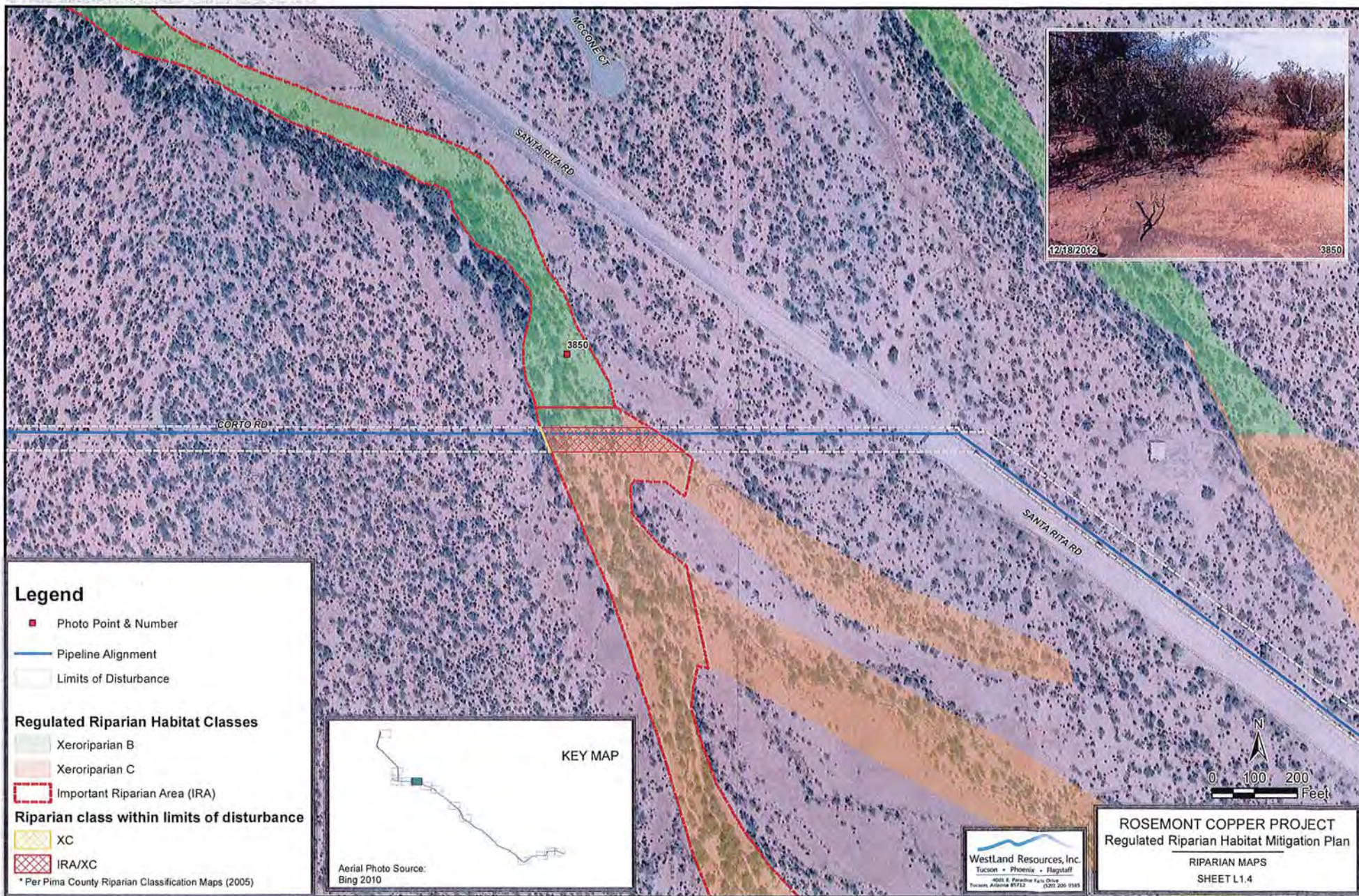




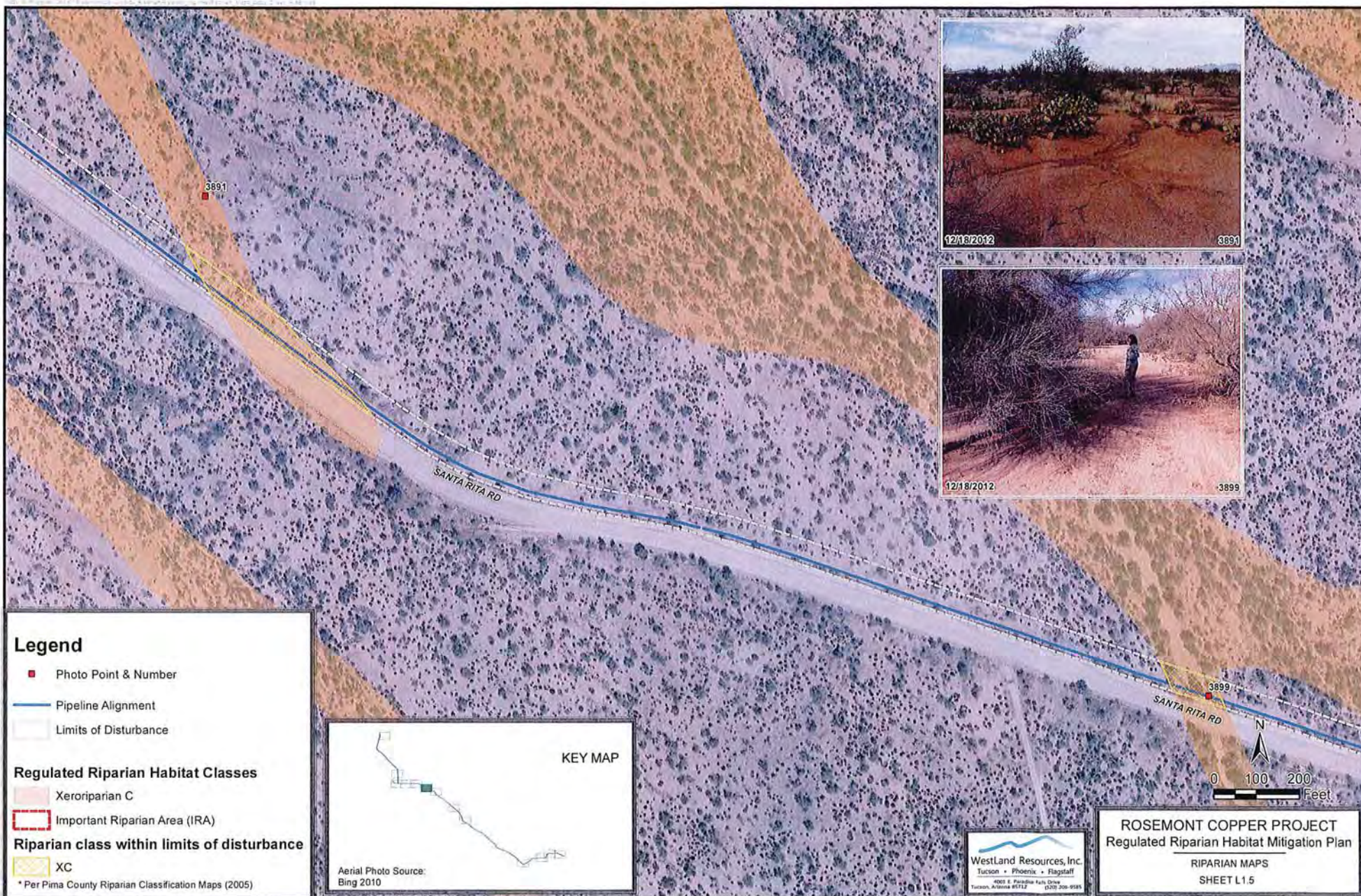




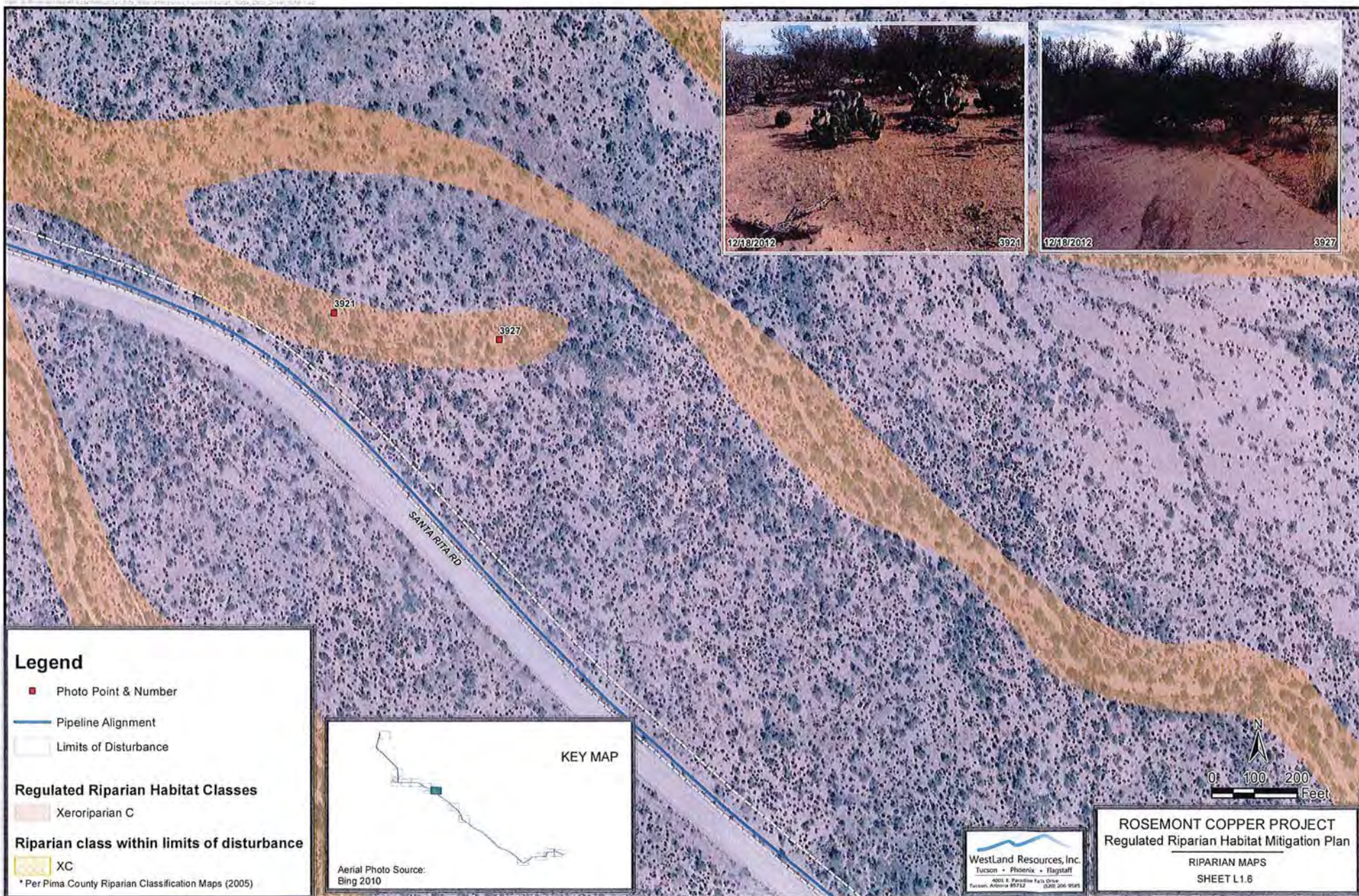




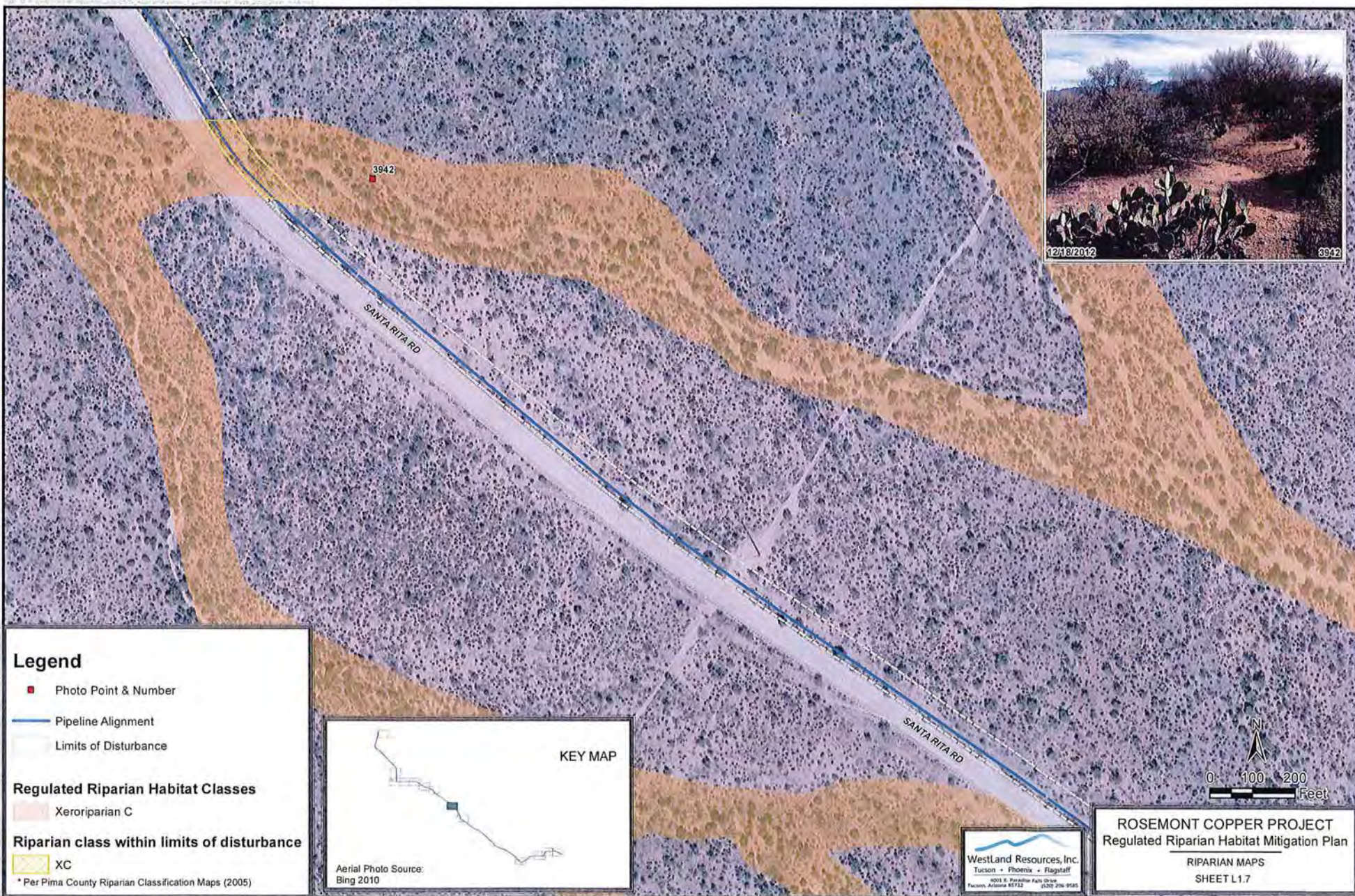




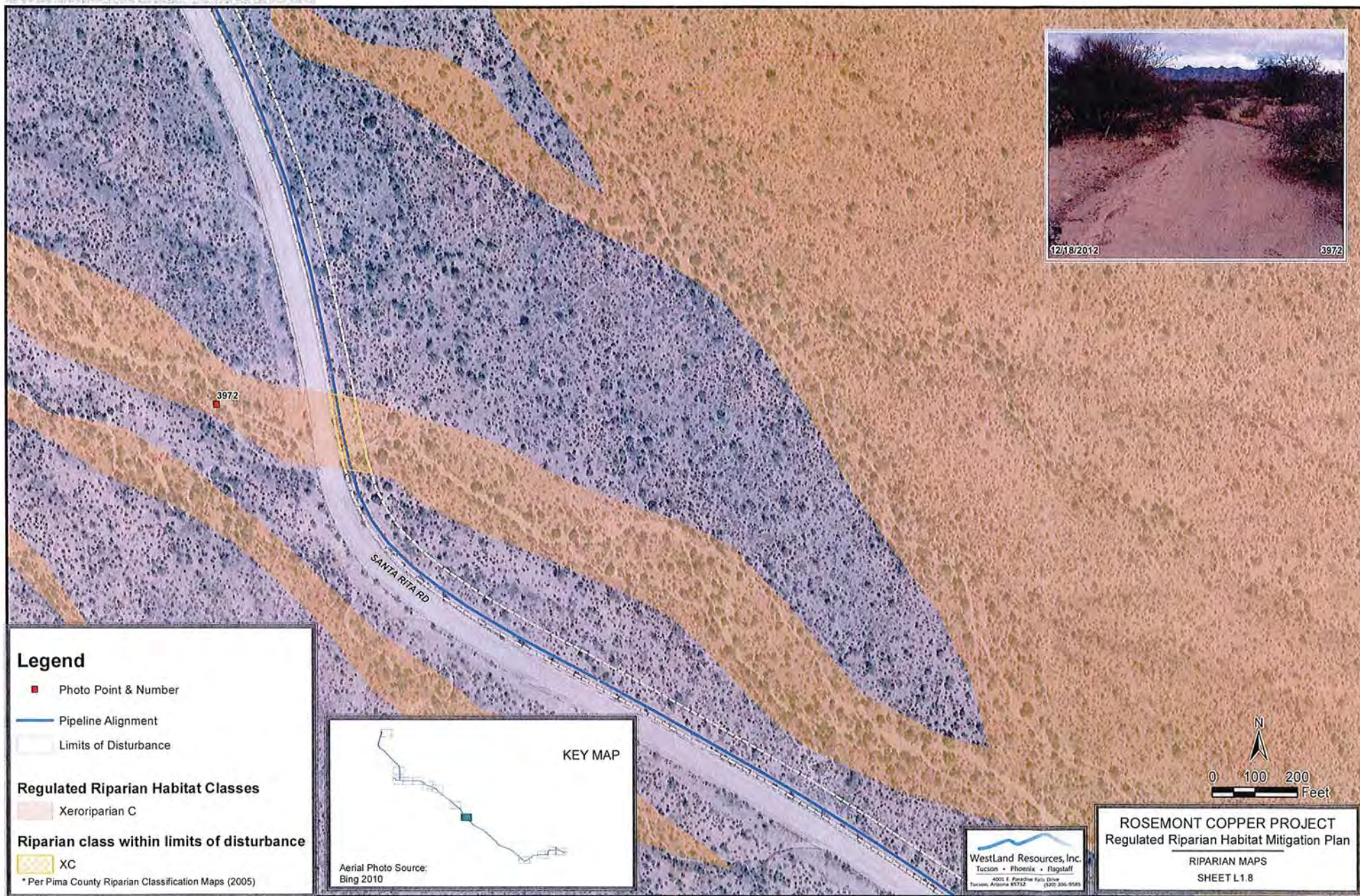




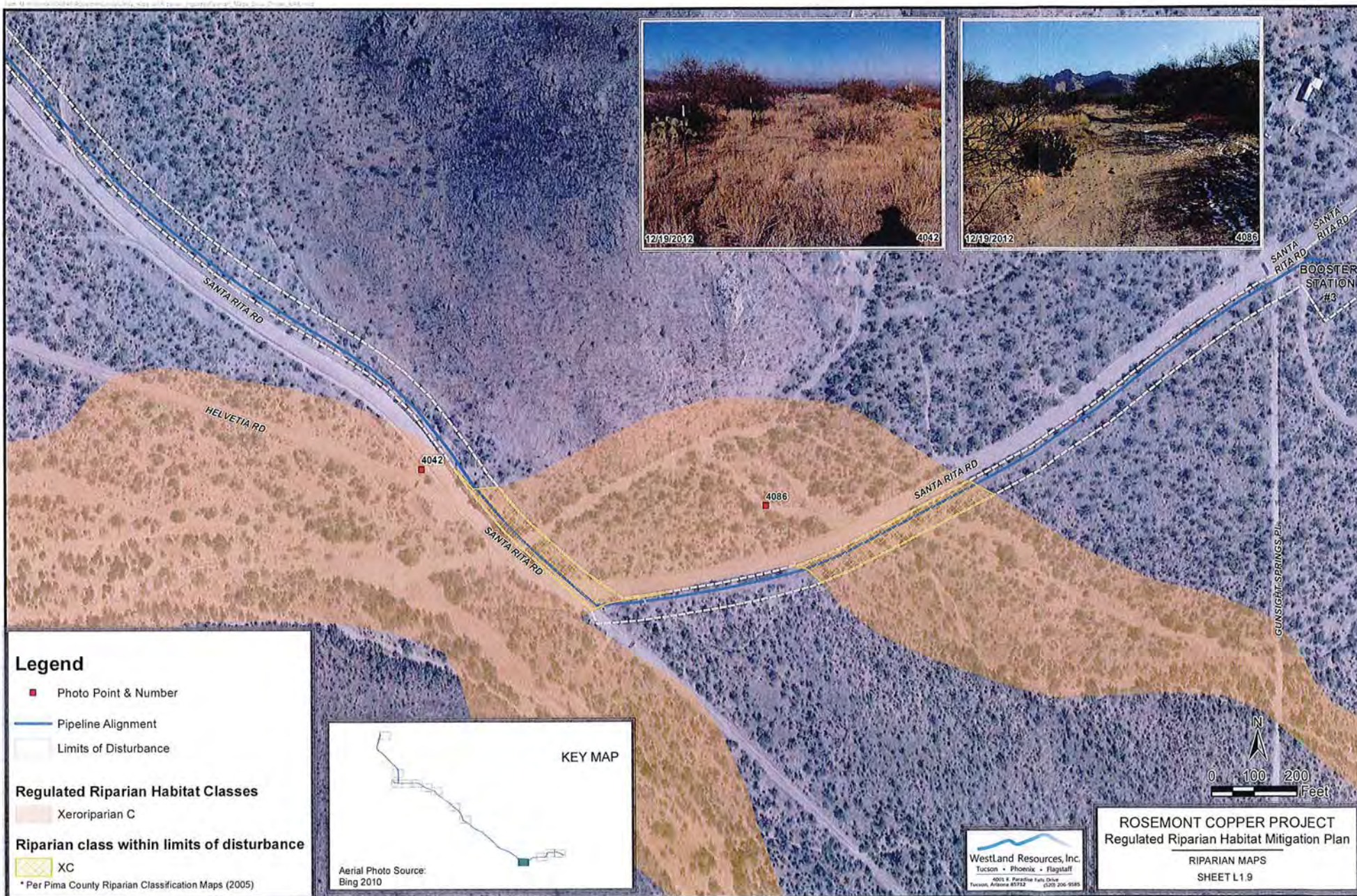












# Legend

■ Photo Point & Number

— Pipeline Alignment

--- Limits of Disturbance

## Regulated Riparian Habitat Classes

Xeroriparian C

## Riparian class within limits of disturbance

XC

\* Per Pima County Riparian Classification Maps (2005)

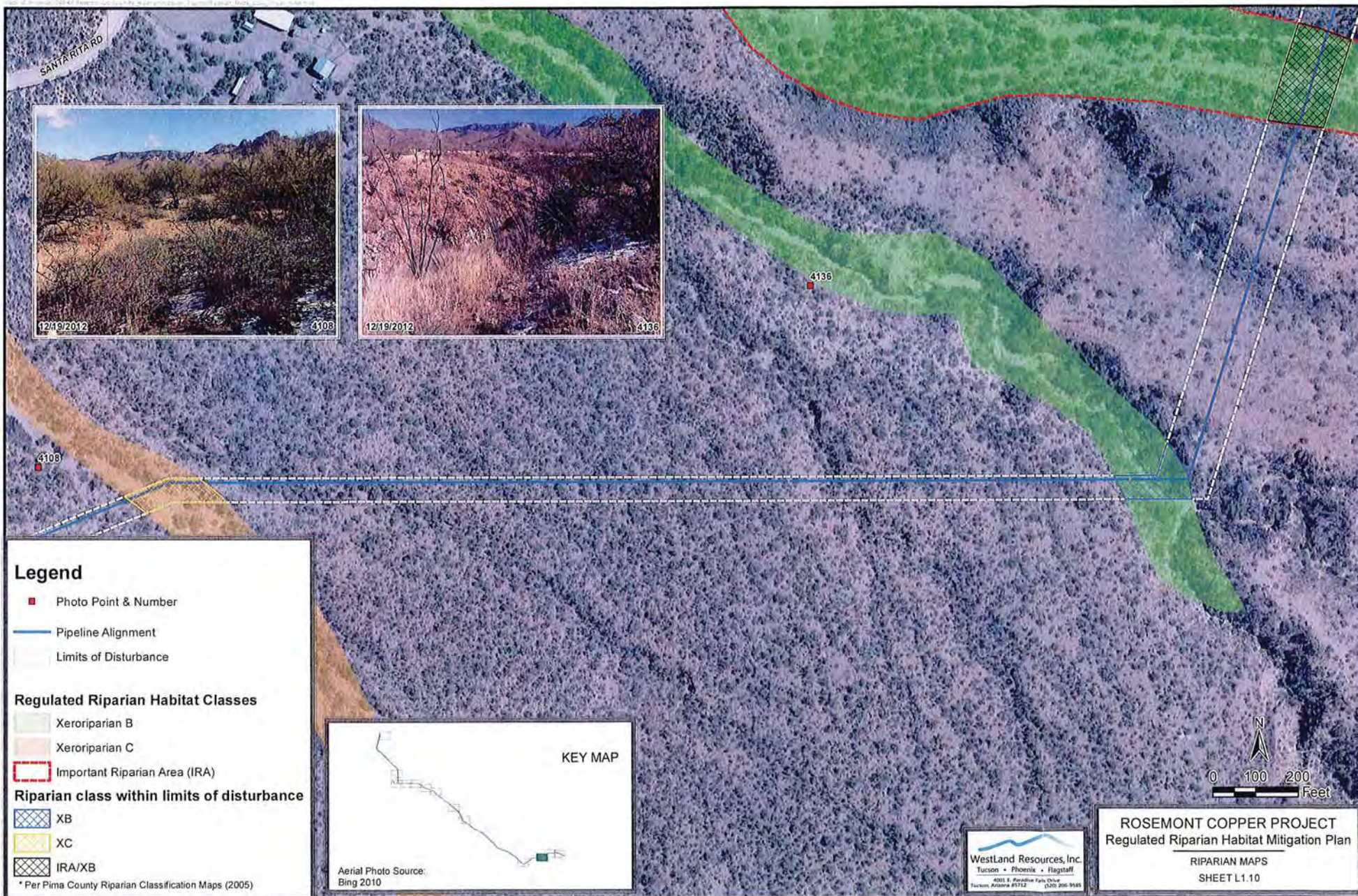
## KEY MAP

Aerial Photo Source:  
Bing 2010

Westland Resources, Inc.  
Tucson • Phoenix • Flagstaff  
4001 S. Paradise Falls Drive  
Tucson, Arizona 85712 (520) 206-9385

ROSEMONT COPPER PROJECT  
Regulated Riparian Habitat Mitigation Plan  
RIPARIAN MAPS  
SHEET L1.9







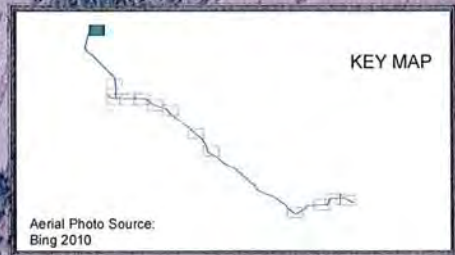


**Legend**

- Pipeline Alignment
- Limits of Disturbance

**Regulated Riparian Habitat Classes**

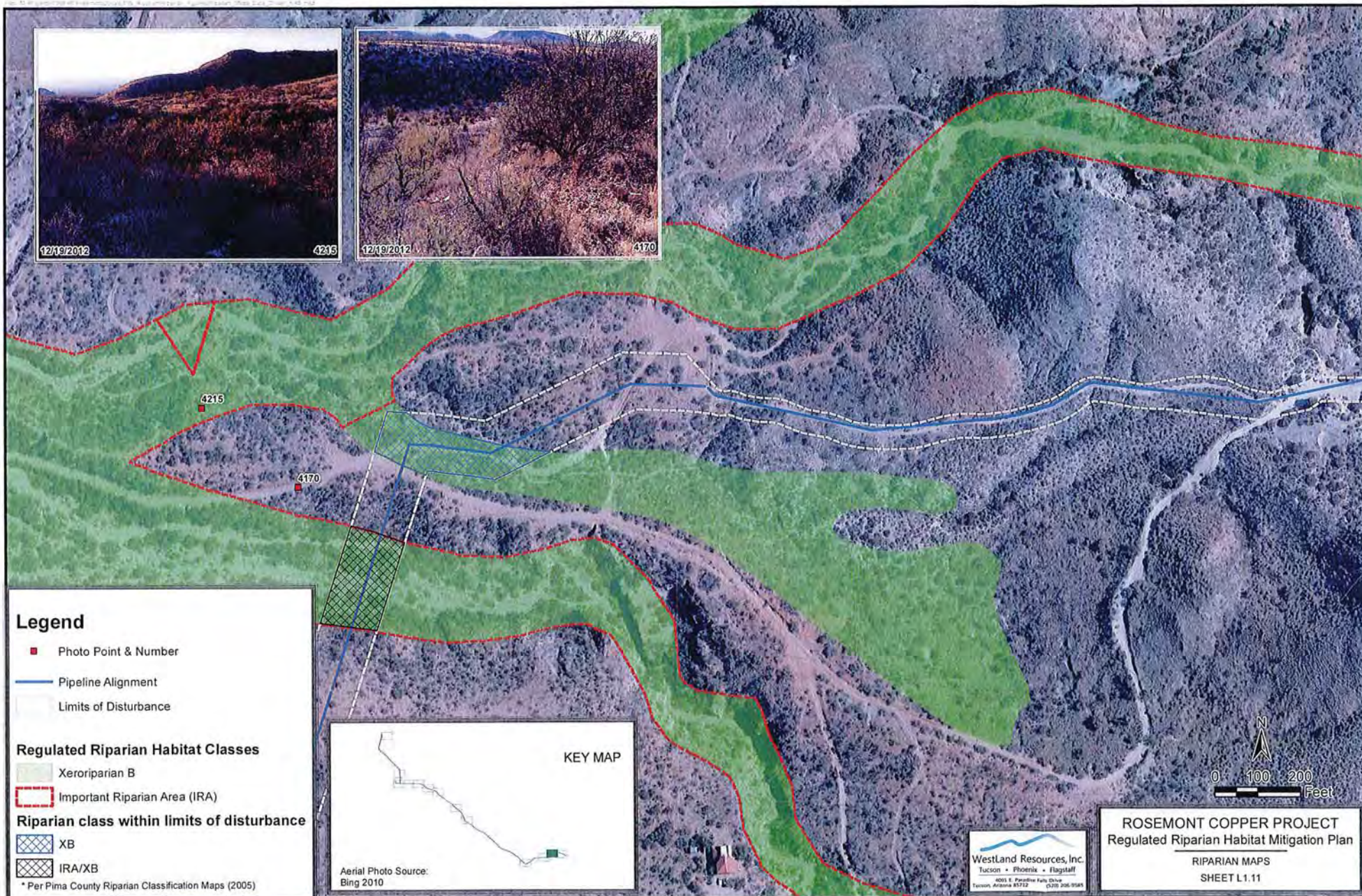
- Xeroriparian B
- \* Per Pima County Riparian Classification Maps (2005)



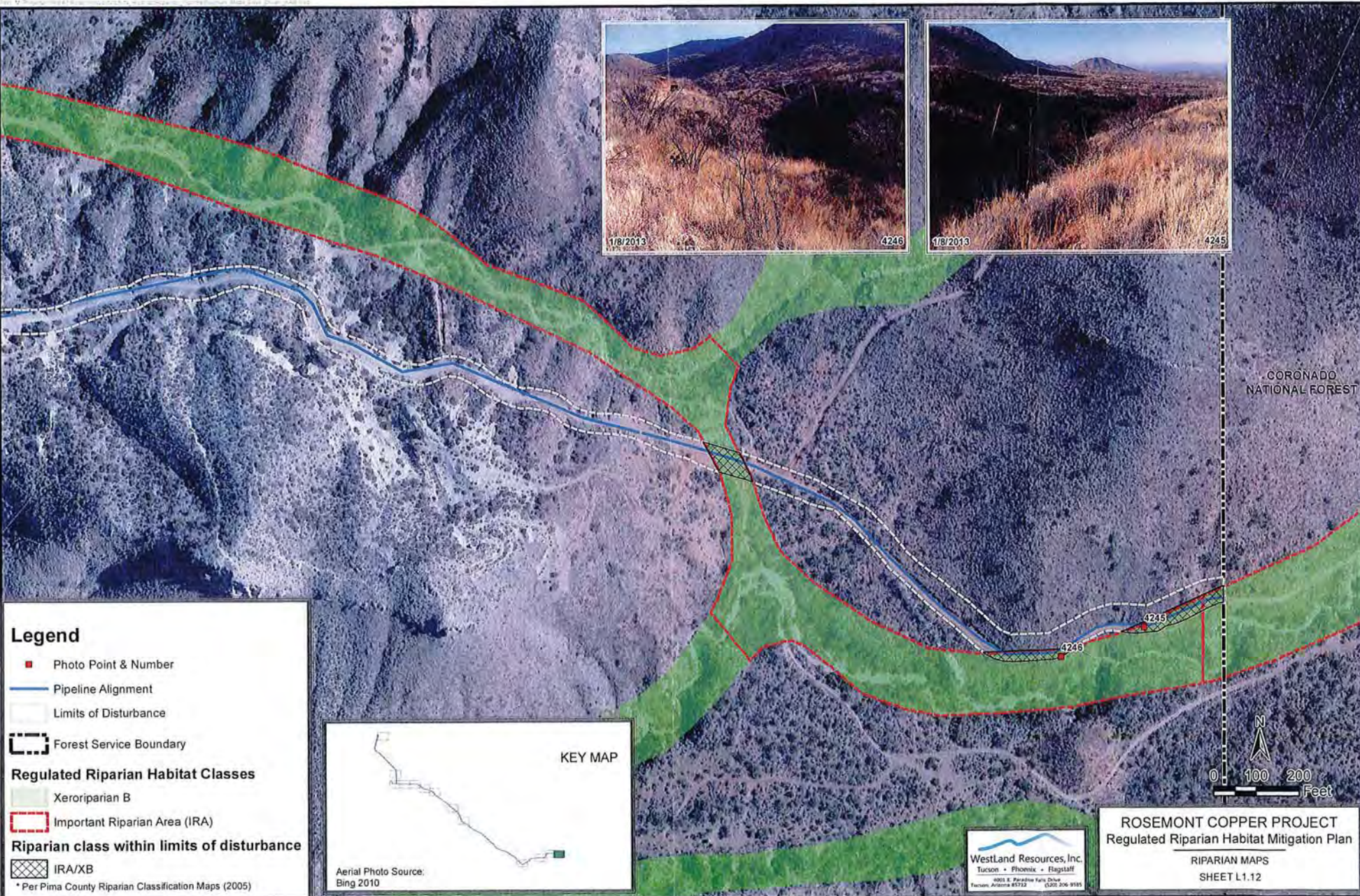
WestLand Resources, Inc.  
Tucson • Phoenix • Flagstaff  
4001 S. Paradise Valley Drive  
Tucson, Arizona 85712 (520) 298-9549

**ROSEMONT COPPER PROJECT**  
Regulated Riparian Habitat Mitigation Plan  
RIPARIAN MAPS  
SHEET L1.0



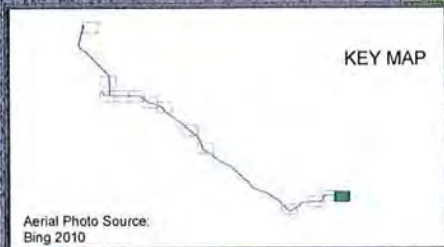






# **Legend**

- Photo Point & Number
  - Pipeline Alignment
  - - - Limits of Disturbance
  - Forest Service Boundary
  - Regulated Riparian Habitat Classes**
  - Xeroriparian B
  - Important Riparian Area (IRA)
  - Riparian class within limits of disturbance**
  - IRA/XB
- \* Per Pima County Riparian Classification Maps (2005)



WestLand Resources, Inc.  
Tucson • Phoenix • Flagstaff  
4003 E. Paradise Valley Drive  
Tucson, Arizona 85712 (520) 296-9591

**ROSEMONT COPPER PROJECT**  
Regulated Riparian Habitat Mitigation Plan  
RIPARIAN MAPS  
SHEET L1.12