



## MEMORANDUM

Date: January 17, 2023

To: The Honorable Chair and Members  
Pima County Board of Supervisors

From: Jan Leshner   
County Administrator

Re: **Additional Information – January 10, 2023 Board of Supervisors Meeting Item 13,  
National Center for Public Lands Counties**

### Background

Supervisor Rex Scott placed this item on the Board's January 10, 2023 agenda, along with the following memorandum detailing the request: January 10, 2023 Agenda Item 13 memorandum.

The agenda item description was as follows: Discussion/Direction/Action regarding approval of a contribution of \$79,240.00 from the General Fund to capitalize a new National Center for Public Lands Counties proposed by the National Association of Counties and the Western Interstate Region Board of Directors. (District 1)

Members of the Board discussed the item and Supervisor Grijalva (now Chair Grijalva) requested a status update regarding the financial participation of other Arizona counties. The item was continued to the Board's January 24, 2023 meeting to provide time to respond to this status request.

### Response

Attached is a presentation provided by the County Supervisors Association at the County Manager's meeting on January 13, 2023. At that time the Board of Supervisors for six Arizona counties had approved participation, for 7 counties the decision was pending (including Pima County), and 2 counties had declined participation (with one noted as possibly reconsidering that action). Another inquiry will be made to the County Supervisors Association closer to the January 24, 2023 Board meeting in order to provide the most up to date information to the Board at that time.

JKL/vm

### Attachment

c: Carmine DeBonis, Jr., Deputy County Administrator  
Francisco Garcia, MD, MPH, Deputy County Administrator & Chief Medical Officer  
Steve Holmes, Deputy County Administrator  
Nicole Fyffe, Senior Advisor, County Administrator's Office

JAN 18 23 AM 09:53 PC CLK OF BD





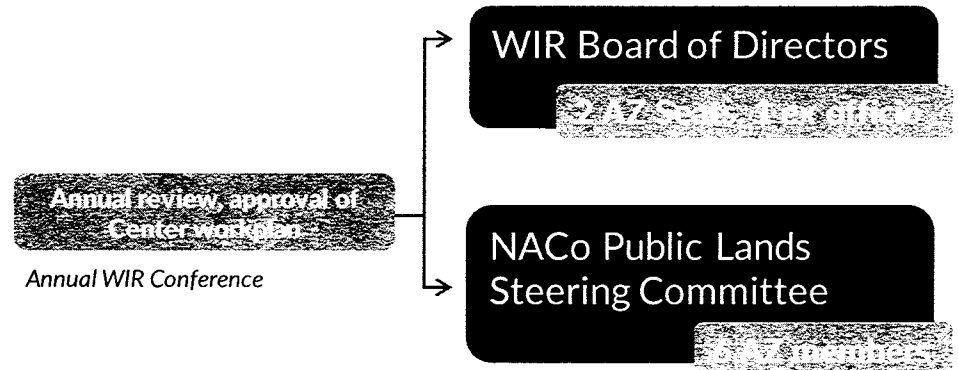
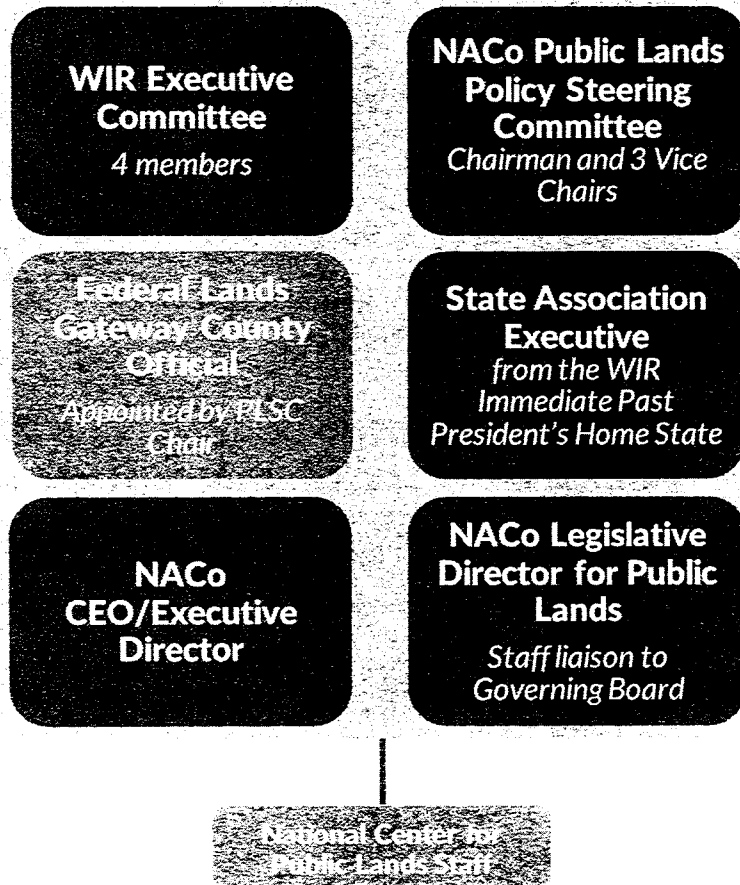
# National Center for Public Lands Counties

CSA Staff



## Proposed Center Governance – Revised

### Advisory Council



### Modifications to Governing Structure:

1. Addition to governing board: Federal Lands Gateway County Official appointed by the NACo Public Lands Steering Committee Chair.
2. The workplan for the Center will be subject to review and approval by WIR Board of Directors and the Public Lands Steering Committee at the May WIR conference.
3. Stipulate that the research work by the National Center is to be non-partisan, aligned with NACo policy and priorities and will not directly conflict with the interests of any county.



## County LATCF Allocations

**Counties are requested to pledge a general fund equivalent of 1% of its total LATCF allocation, distributed to the Center in 2 payments.**

County	Total LATCF Allocation	Total Contribution	Status
Apache County	5,537,990	55,380	<i>Pending</i>
Cochise County	5,798,697	57,987	Approved
Coconino County	12,000,000	120,000	Approved
Gila County	12,000,000	120,000	Approved
Graham County	7,032,662	70,327	Approved
Greenlee County	2,896,245	28,962	Approved
La Paz County	9,844,800	98,448	Declined, Financial Difficulty
Maricopa County	7,775,912	77,759	<i>Pending</i>
Mohave County	12,000,000	120,000	<i>Pending - Agenda 1/17/23</i>
Navajo County	4,785,316	47,853	<i>Pending</i>
Pima County	7,924,031	79,240	<i>Pending - Tabled to 1/24/23</i>
Pinal County	2,933,969	29,340	<i>Pending</i>
Santa Cruz County	3,460,376	34,604	<i>Pending</i>
Yavapai County	12,000,000	120,000	Declined, Possible Reconsideration
Yuma County	12,000,000	120,000	Approved
<b>Arizona Total</b>	<b>117,989,999</b>	<b>1,179,900</b>	