



MEMORANDUM

Date: October 19, 2022

To: The Honorable Chair and Members
Pima County Board of Supervisors

From: Jan Leshner *[Signature]*
County Administrator

Re: Follow up Information Related to JobPath Fiscal Year 2021/2022 Activities

During the July 5, 2022 Board of Supervisors meeting, there were several questions from Supervisors related to JobPath, specifically regarding its operations, enrollment, funding, and future outlook. Pima County Economic Development has worked with JobPath on information related to these areas as outlined in the attached correspondence from JobPath CEO Ana Greif.

JKL/dym

Attachment

- c: Carmine DeBonis, Jr., Deputy County Administrator
Francisco García, MD, MPH, Deputy County Administrator and Chief Medical Officer
Steve Holmes, Deputy County Administrator
Heath Vescovi-Chiordi, Director, Economic Development Department

OCT 19 22 PM 04:53 PC CLK OF BD

[Handwritten initials]



To: Jan Leshar, Pima County Administrator

From: Ana Greif CEO

CC: Heath Vescovi-Chiordi, Director, Pima County Economic Development

Patrick Cavanaugh, Deputy Director, Pima County Economic Development.

Date: October 10, 2022

Re: JobPath Fiscal Year Close Update

As requested by the Board of Supervisors at the July 5, 2022 meeting, I respectfully submit the following additional information to address the specific questions that were raised by members of the Board.

Question 1. Clarification of Terminology and Enrollment Numbers

At the close of fiscal year 2021-22, JobPath served 670 students, as required by its contract with Pima County and as detailed in Table 1.

The number of participants served each year includes participants who continue from the previous fiscal year, newly enrolled students, and students in onboarding status. Enrolled students have been assigned to a JobPath student success coach and are eligible for financial assistance and all JobPath services. Onboarded students are working with JobPath coaches to finalize the intake process and complete their enrollment. The services they receive during the onboarding phase include referrals to other organizations, the development of financial plans, and any interventions needed when participants are in crisis.

Currently, JobPath has 112 students who initiated the enrollment process in FY 2021-22 who have not submitted all of their eligibility documentation. Typically 60% of students who begin the process meet eligibility requirements and continue to the onboarding process.

The hourly pre-training wage average for participants was \$14.03, and our graduates' average *post*-training hourly wage is \$29.96. JobPath graduates *increased* their hourly

salary by an average of \$15.93. JobPath exceeded the \$16 hour requirement established in our contract by \$13.96.

Finally, **JobPath's student retention rate is 95%** this fiscal year, with only 26 individuals (5%) withdrawing from the program.

Table 1

JobPath Enrollment by Fiscal Year (FY)

	FY 2019-2020	FY 2020-2021	FY 2021-2022
Continued from prior FY	180	243	251
Newly enrolled	154	135	419
Total served	334	378	670
Withdrawals	20	31	26
Completed and exited JP	91	96	157
Rolled over to following FY (includes graduates who continue receiving services)	243	251	487

Question 2. Funding diversification update:

JobPath has diversified its funding sources from relying primarily on local government funds to now having state and federal funding streams and funding from national non-profits as provided in Table 2.

The additional funding for Pinal, Cochise, and Santa Cruz counties will enable JobPath to improve services across Southeast Arizona, including Pima County. For example, those funds will cover updating and improving JobPath's website, translating marketing materials and website into Spanish, and increasing JobPath's social media presence throughout the region. Additionally, the community colleges in these other counties offer programs of study needed in Pima County but are either not offered or have exceeded capacity at Pima Community College - programs such as nursing, heavy equipment operation, and welding.

Table 2

Funding Source	Amount	Project/Restrictions
Connie Hillman Family Foundation	\$230,422	Unrestricted
ECMC	\$422,000	2-year expansion project into Cochise County
State of Arizona	\$2,900,000	3-year expansion project into Pinal, Santa Cruz, and Cochise counties
US Department of Education Office of Postsecondary Education	\$500,000	1 year project to recruit & enroll women and parents into programs JobPath supports

Question 3. JobPath involvement with School Districts in Pima County

JobPath has traditionally served students who have been disconnected from the education system for a number of years. Historically the average age of participants has been 30-35 years old. However, recognizing that it is vital to keep recent high school graduates from leaving the system in the first place, JobPath in 2022 intends to ramp up its relationship with local high schools to make our services available to their students. Initial conversations have already begun with Marana Unified School District and Amphitheater Public Schools to work with their school counseling team and family outreach programs.

Question 4. Participant Residency Data

Please refer to attachment 1 which provides GIS maps that show the number of JobPath participants and fields of study identified by Pima County Supervisory Districts, City of Tucson Council Wards, Native American reservations in Pima County and municipal jurisdictions.

Attachment 1

Participant Residency Data

2021-2022 Fiscal Year



JobPath Participants by County District

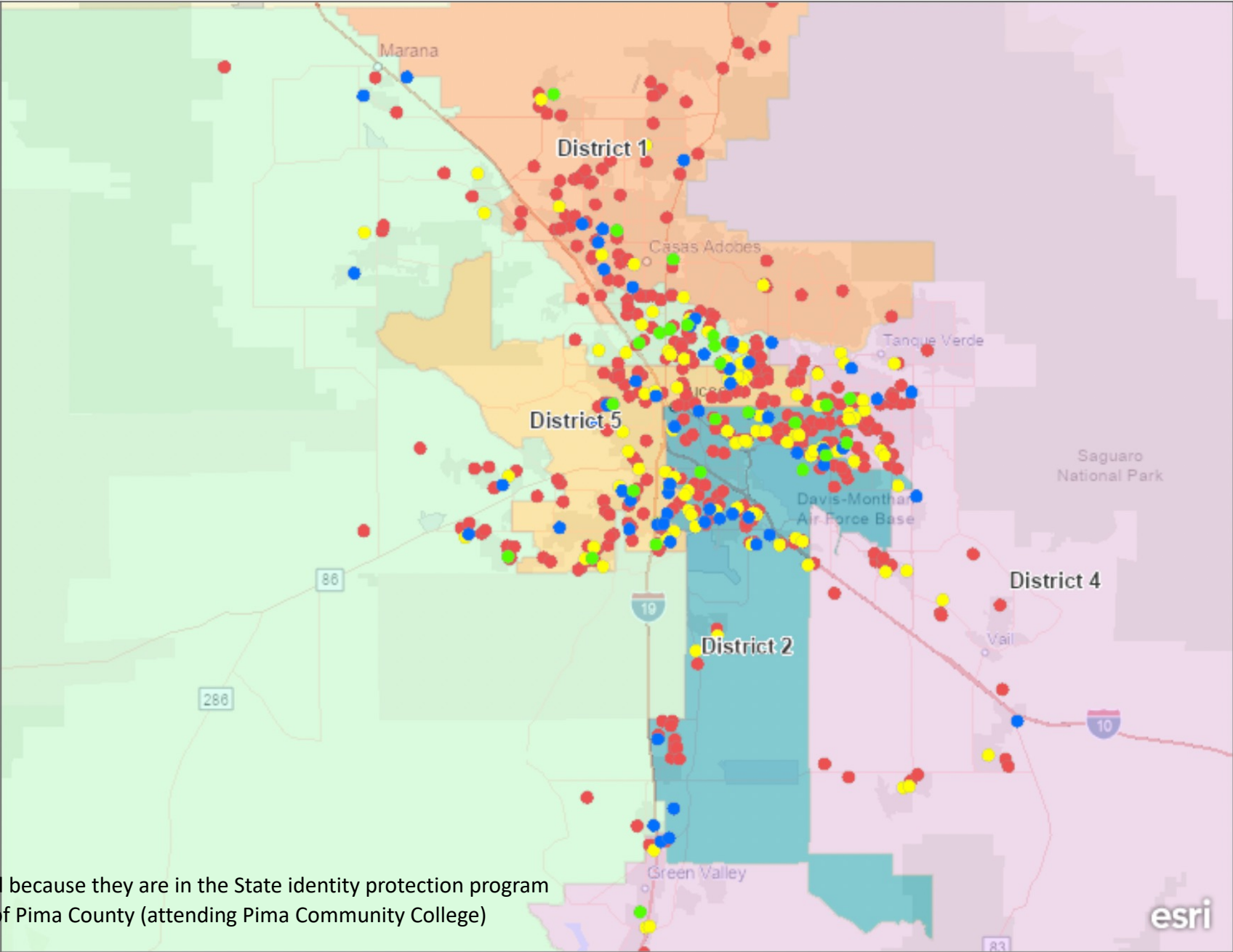
Program of study

- Applied Tech.
- Aviation Tech.
- Computer Information Syst.
- Allied Health

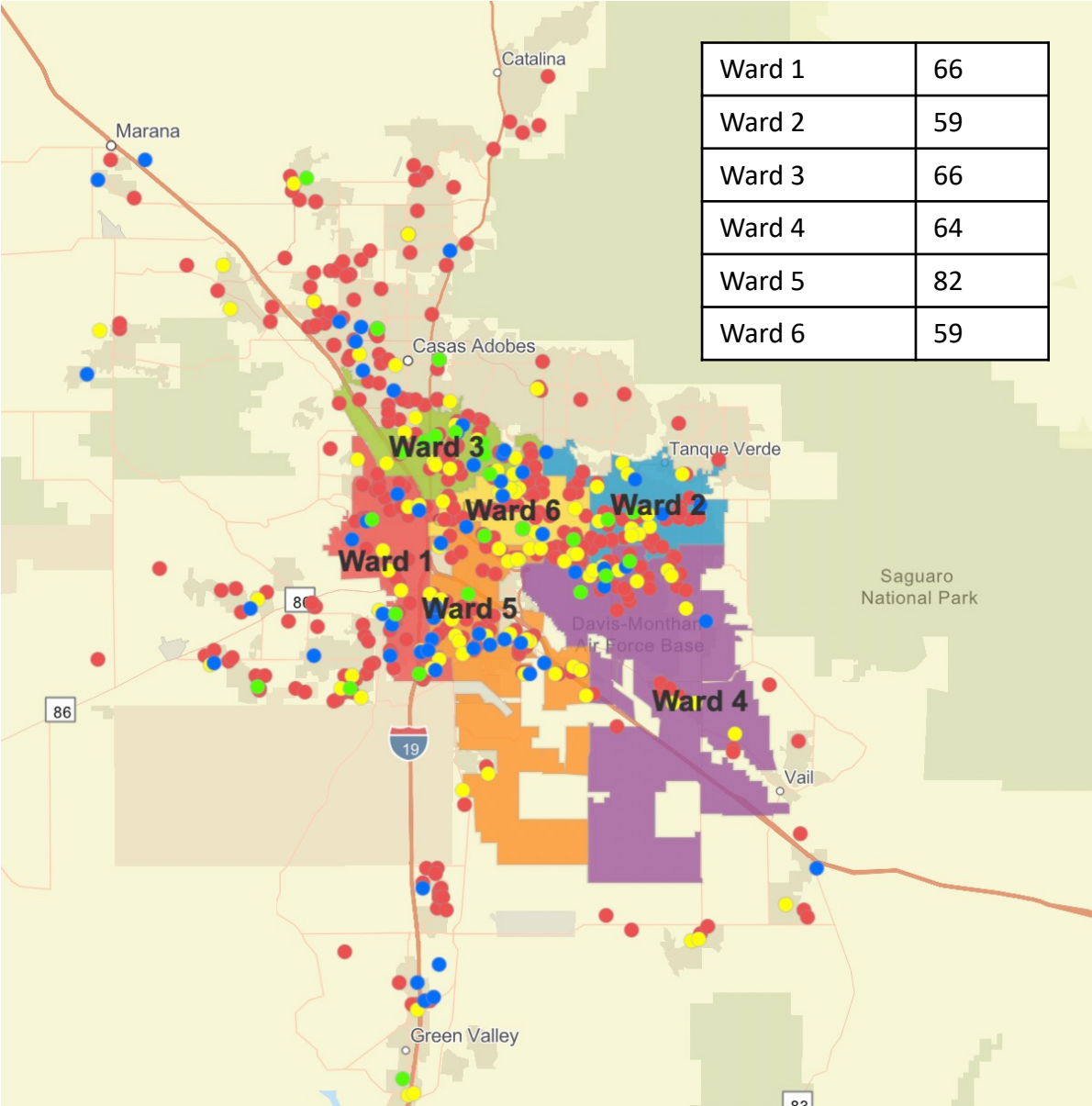
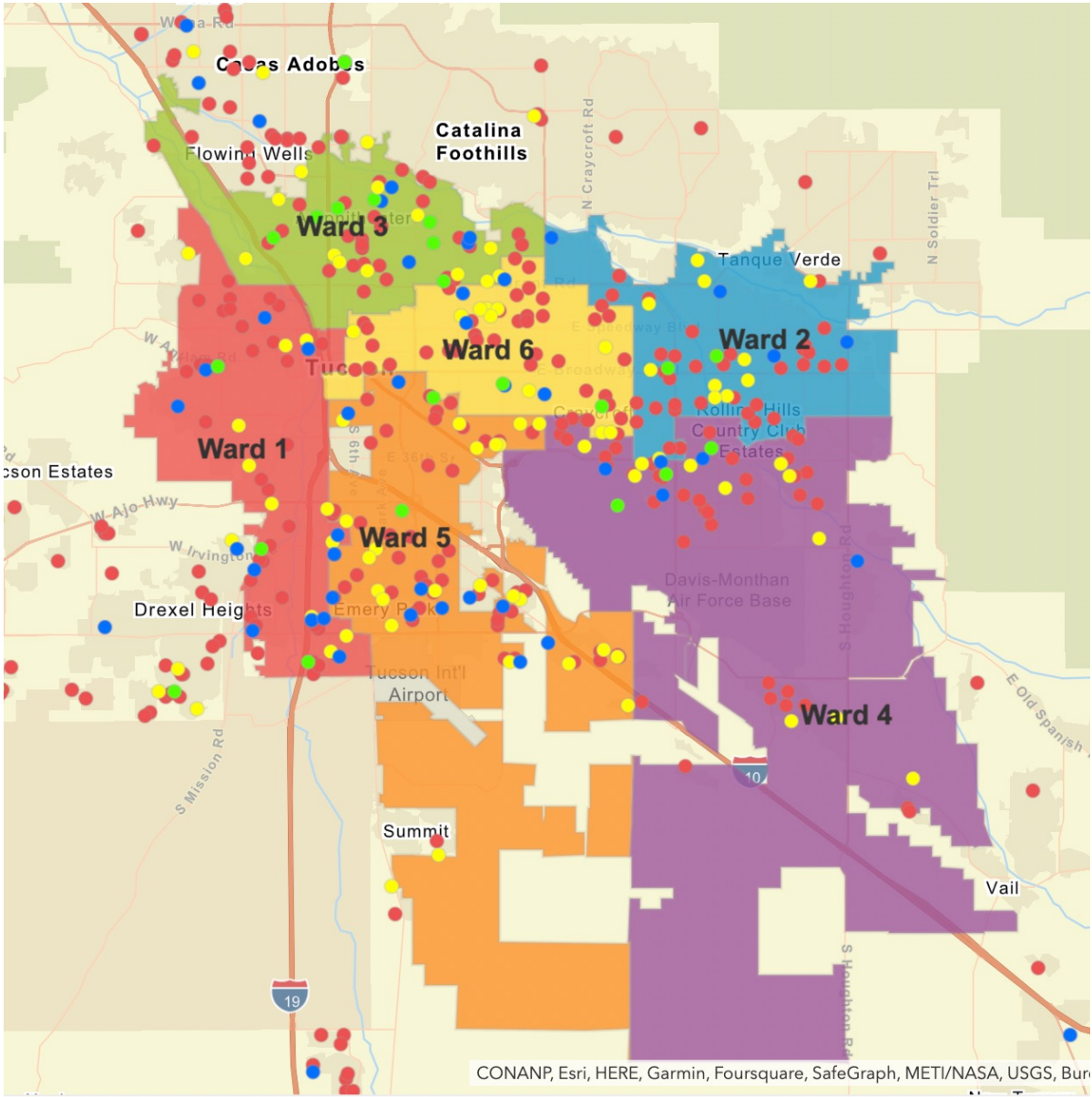
Participant count*

District 1	104
District 2	187
District 3	126
District 4	97
District 5	148

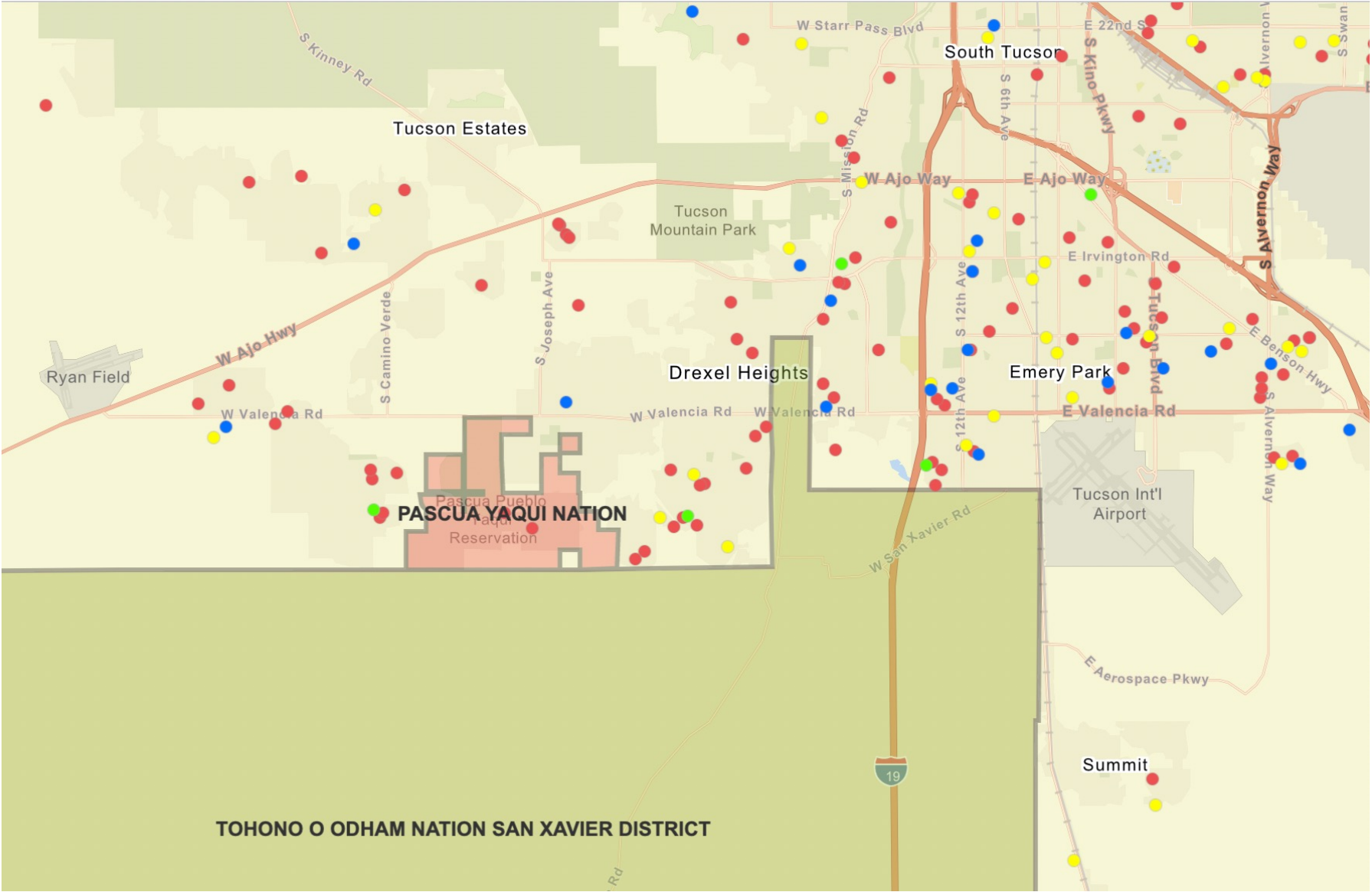
*5 participants are not counted because they are in the State identity protection program
3 participants reside outside of Pima County (attending Pima Community College)



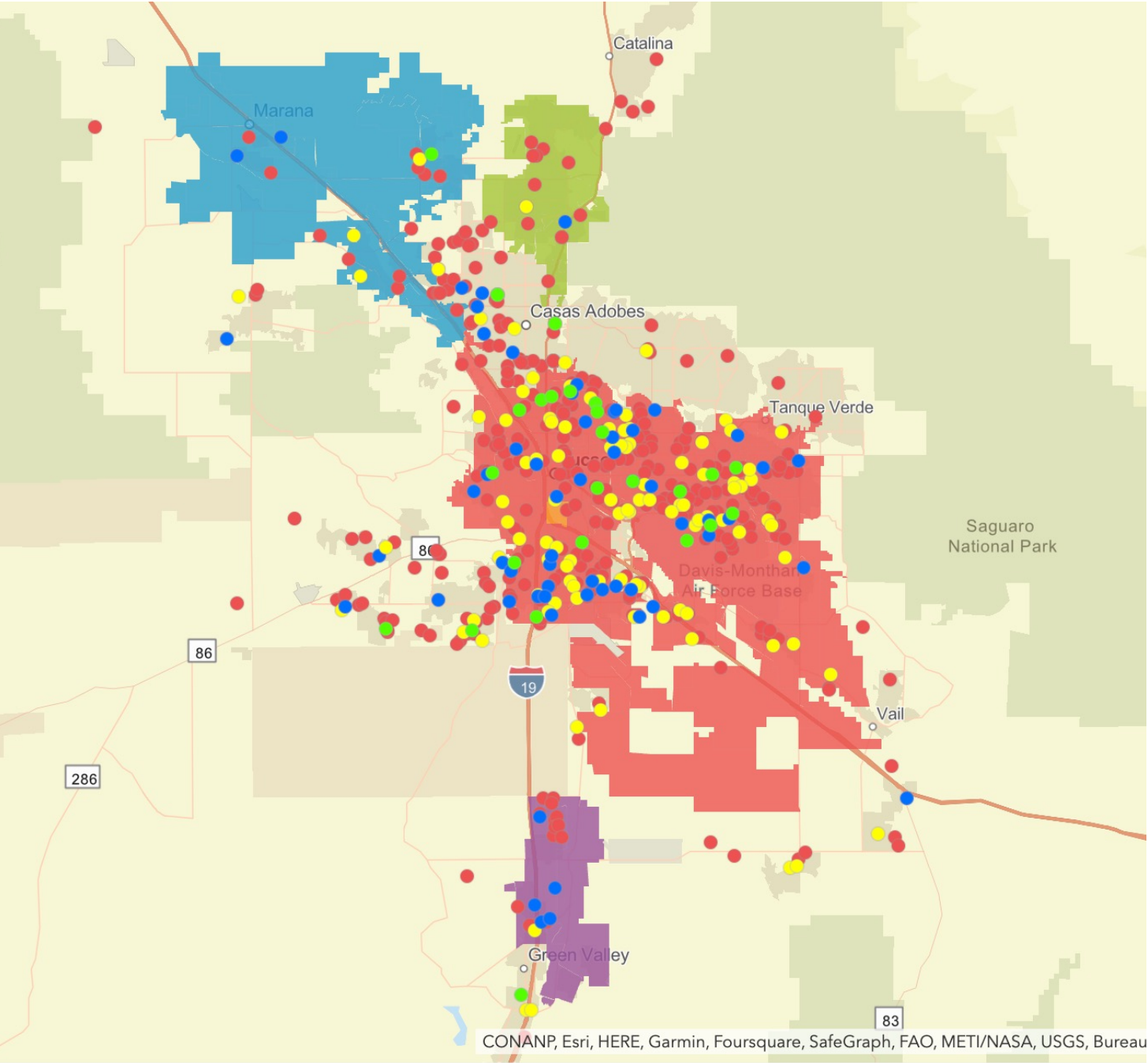
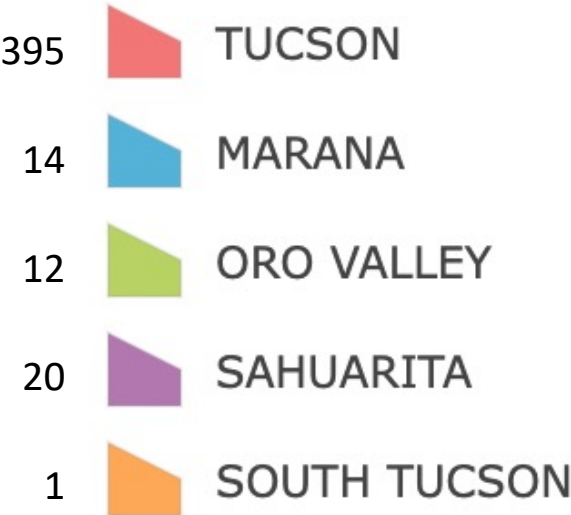
JobPath Participants by City of Tucson Ward



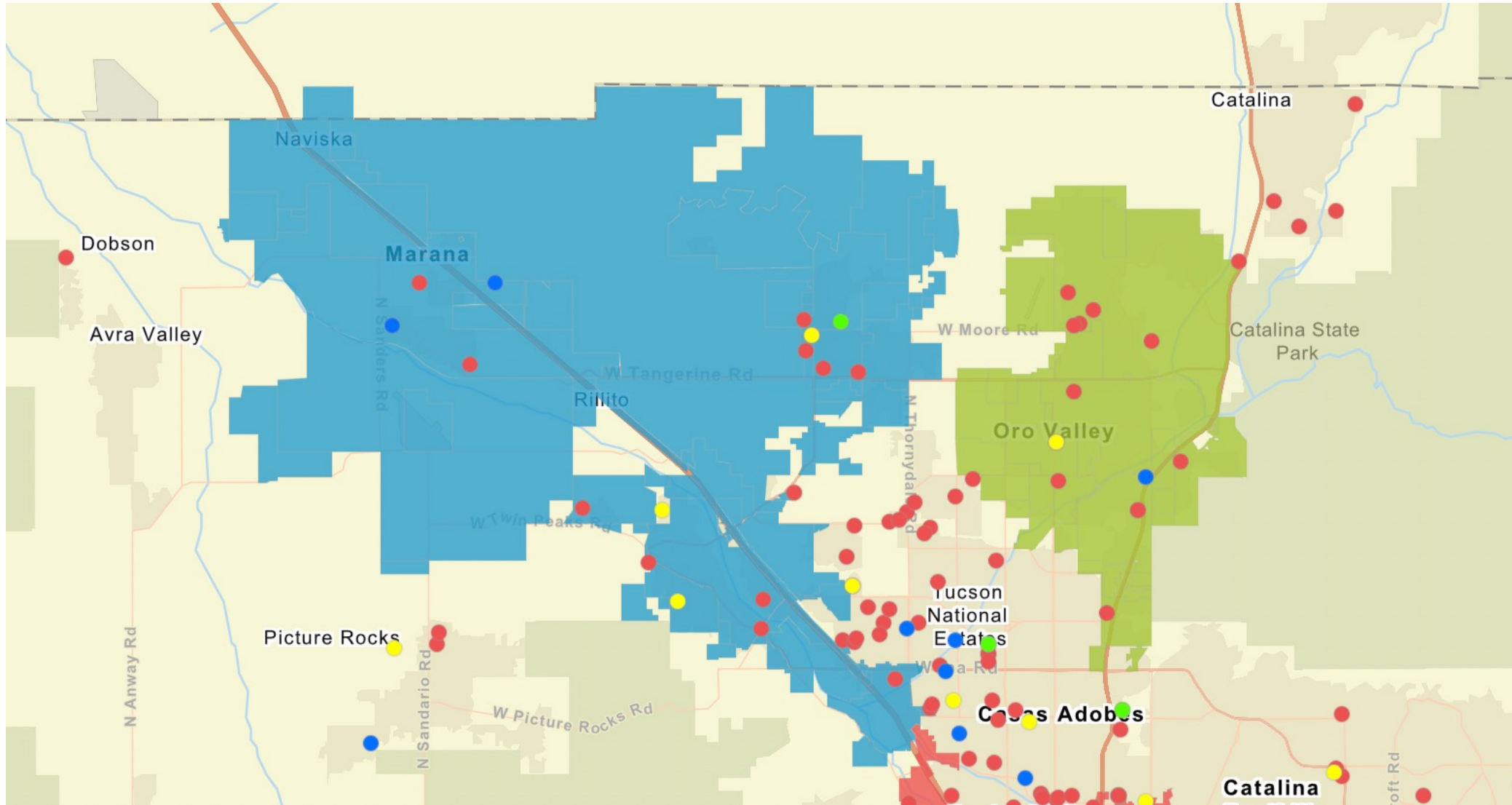
JobPath Participants by Tribal Reservation



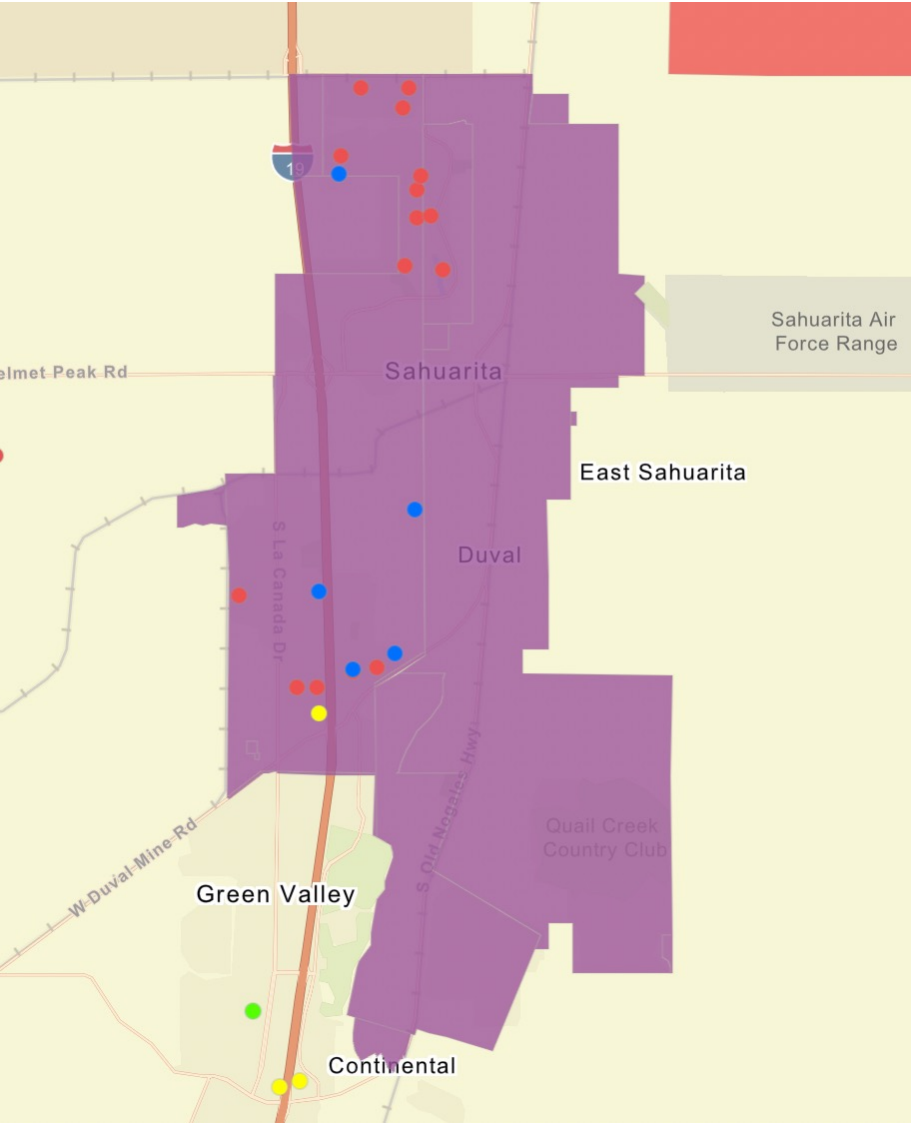
JobPath Participants by Township



Marana and Oro Valley



Green Valley



South Tucson

