



MEMORANDUM

Date: September 14, 2022

To: The Honorable Chair and Members
Pima County Board of Supervisors

From: Jan Leshner 
County Administrator

Re: **Additional Information for the Board of Supervisors September 6, 2022 Meeting -
Emergency Rental Assistance Program – Consent Item No. 2**

At its September 6, 2022 meeting, the Board requested an update on the progress of the County's emergency rental assistance efforts. Specifically there was interest in the status of the backlog of cases received from the City's contractor at the time of the transition this summer.

Attached please find a detailed report on the program from Community & Workforce Development Director Daniel Sullivan. (Attachment 1) Since March 2020, this department has served 17,718 households with more than \$49.5 million in rent and utility assistance. There continues to be a high level of demand for rental assistance in this community. Just in July and August, the Department delivered \$7.6 million in rent and utility assistance. Notably we continue to experience a high level of demand for these services; with approximately 700 requests for assistance each week.

At my request, the Geographic Information Systems (GIS) team has mapped the unique household awards processed by the County across our various evictions assistance programs (by quarter). (Attachment 2) These maps document the breadth of distribution of these benefits across all jurisdictional and supervisory district boundaries, including to families in some of our most rural settings.

At this time, the approximately 3,500 open applications transferred by the City as part of the transition have been processed.

Pima County has approximately \$7.4 million in Emergency Rental Assistance funding remaining, which we will expend before the end of November. Our request for additional \$15 million from the State of Arizona's allocation appears to be moving forward. Those additional resources are critical and could extend the emergency rental assistance until March.

JKL/dym

Attachments

- c: Carmine DeBonis, Jr., Deputy County Administrator
Francisco García, MD, MPH, Deputy County Administrator and Chief Medical Officer
Steve Holmes, Deputy County Administrator
Daniel Sullivan, Director, Community & Workforce Development
Mark Hayes, Interim Chief Information Officer, Information Technology Department

SEP 14 22 PM 02:27 POC/KJF-BD

ATTACHMENT 1

Date: September 13, 2022

To: Jan Leshar
County Administrator

Francisco García
Deputy County Administrator and Chief
Medical Officer

From: Dan Sullivan 
Community & Workforce Development
Director

Re: **Emergency Rental Assistance Program Update**

This memorandum provides the current status of the Emergency Rental Assistance Program, as requested at the September 6, 2022 meeting. As of August 18, the entire backlog received from Community Investment Corporation on May 3 has been cleared, with all cases either completed or assigned to caseworkers for completion.

Since March 2020, CWD has served 17,718 households with more than \$49.5 million in rent and utility assistance from all funding sources. For a breakdown by month and by funding source, please see Attachments A and B. This reflects only Pima County funding; it does not include funding separately allocated to the City of Tucson and disbursed through the joint Eviction Prevention Program.

Of course, throughout that time since Pima County took over the entire program, new applications have continued to come in, and the County is processing those as well. CWD has significantly expanded its capacity to process cases, which resulted in more than \$7.6 million in rent and utility assistance dispersed in July and August from all funding sources. Currently, CWD receives approximately 700 inquiries for rental per week. To meet this demand for service CWD has finalized subrecipient agreements with Compass Affordable Housing, Family Housing Resources, and the Sunnyside Foundation.

Applications for tenants who are in eviction proceedings are assigned to a dedicated escalation team, and are assigned to a caseworker 7-10 days from notice of application. That team is processing cases at a rate of 50-60 per week.

For applications that are not yet in court, the cases are assigned based on date of application and income, and are assigned either to County staff in the Community Assistance Division or to subrecipient agencies. The average time between initial inquiry in the portal to assignment to a caseworker is 37 days.

The timeframes above do not include the time necessary for a caseworker to complete the application. That time period varies and depends heavily on timely communication and cooperation from the landlord and tenant. In cases with high levels of communication and parties providing necessary documentation, cases can be approved within a couple of days. In some instances, processing times are much longer because of lack of contact or failure to provide necessary documentation.

Pima County has approximately \$7.4 million in Emergency Rental Assistance funding remaining. At the current spend rate, we expect that money to be depleted by the end of November, if not sooner. As noted in prior memos, on July 12, 2022, a request for reallocation of \$15 million in funding originally allocated to the State of Arizona was submitted to the United States Treasury. The Arizona Department of Economic Security supported this request and recently contacted staff for information needed to complete the process. We expect final approval will come soon and extend the program to at least March. Further reallocations may be possible in the future depending on funding availability.



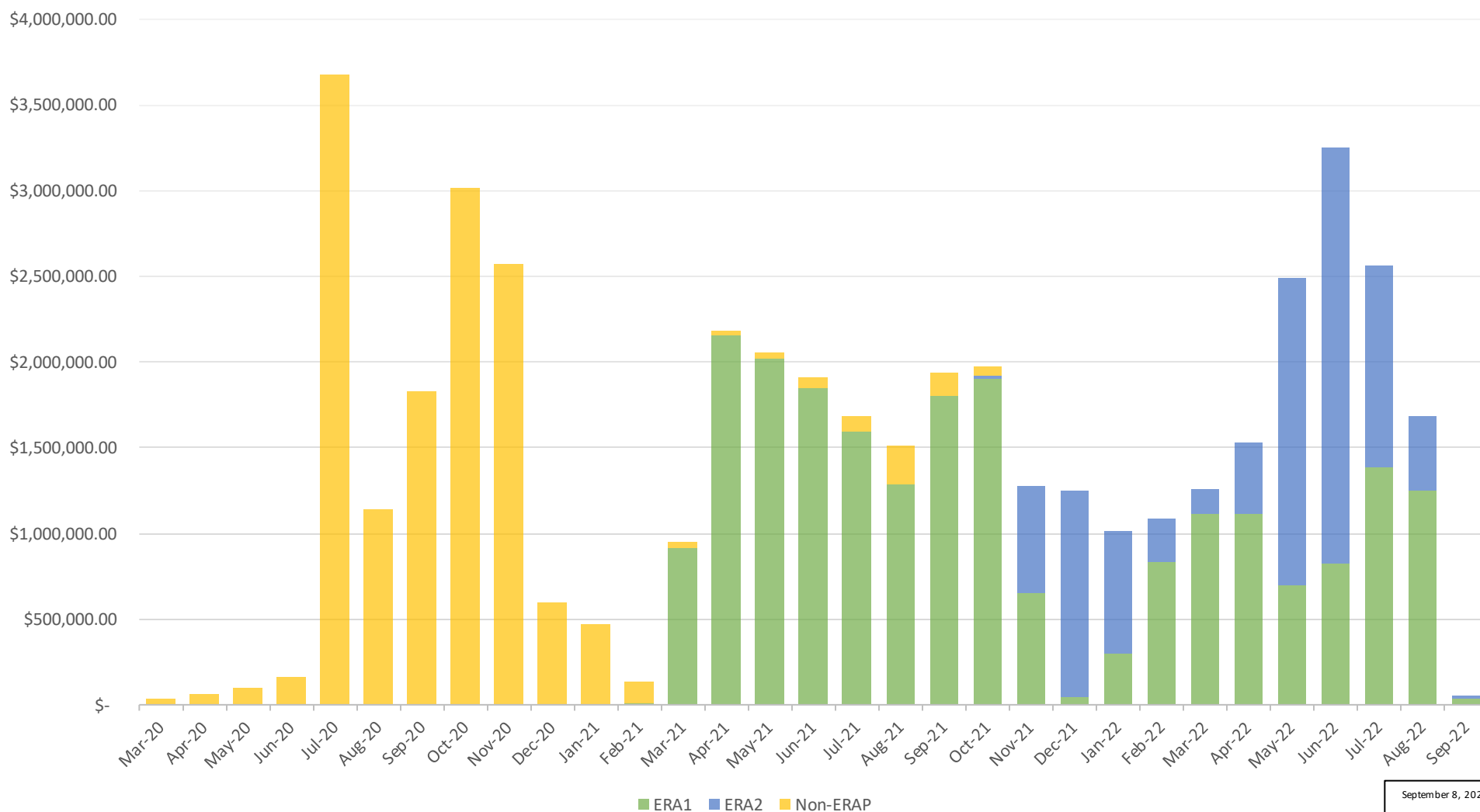
17,718 Households Served



Total Payments

\$49,506,744.00

COMMUNITY ASSISTANCE DIVISION RENT & UTILITY PANDEMIC ASSISTANCE



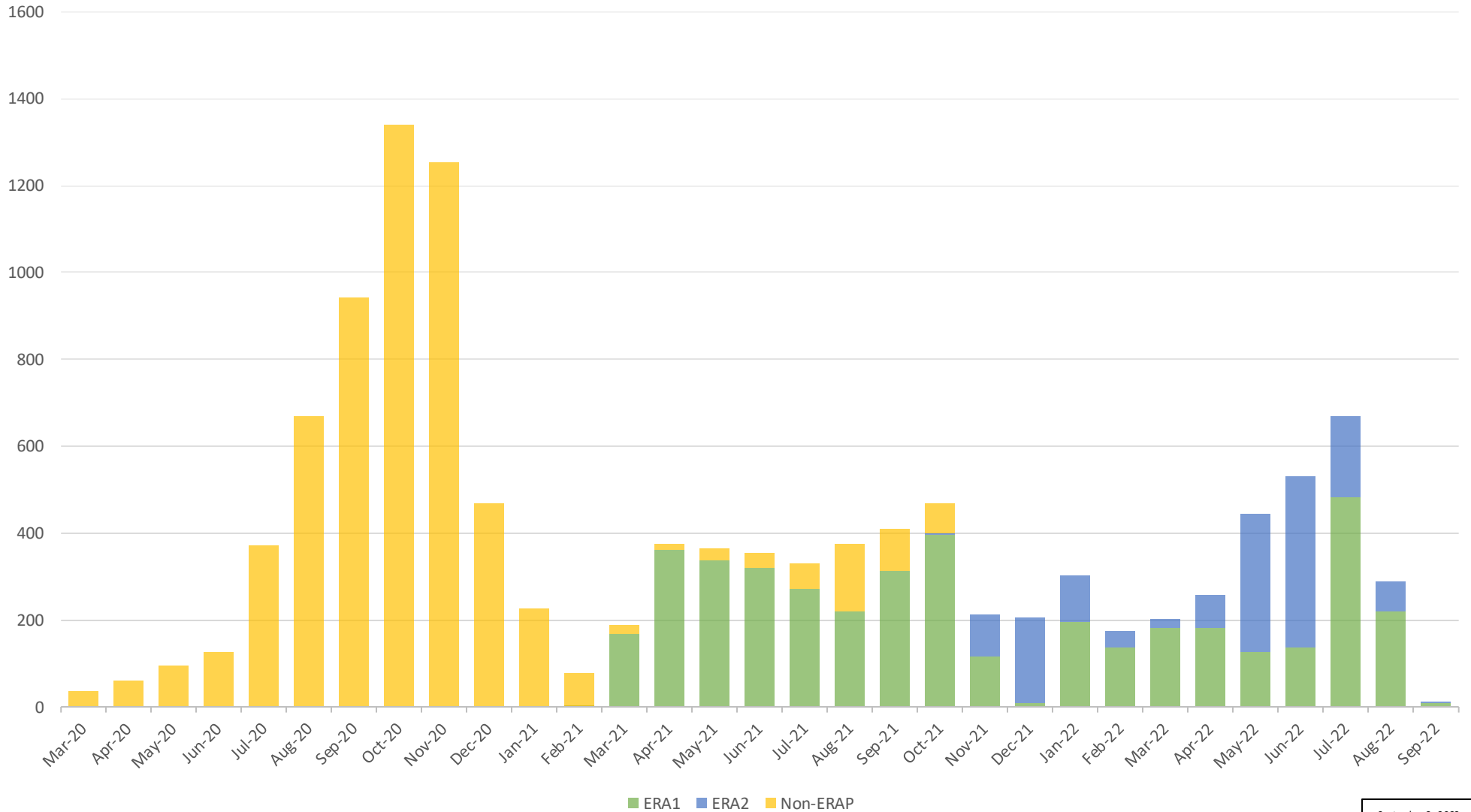


17,718 Households Served

Total Payments

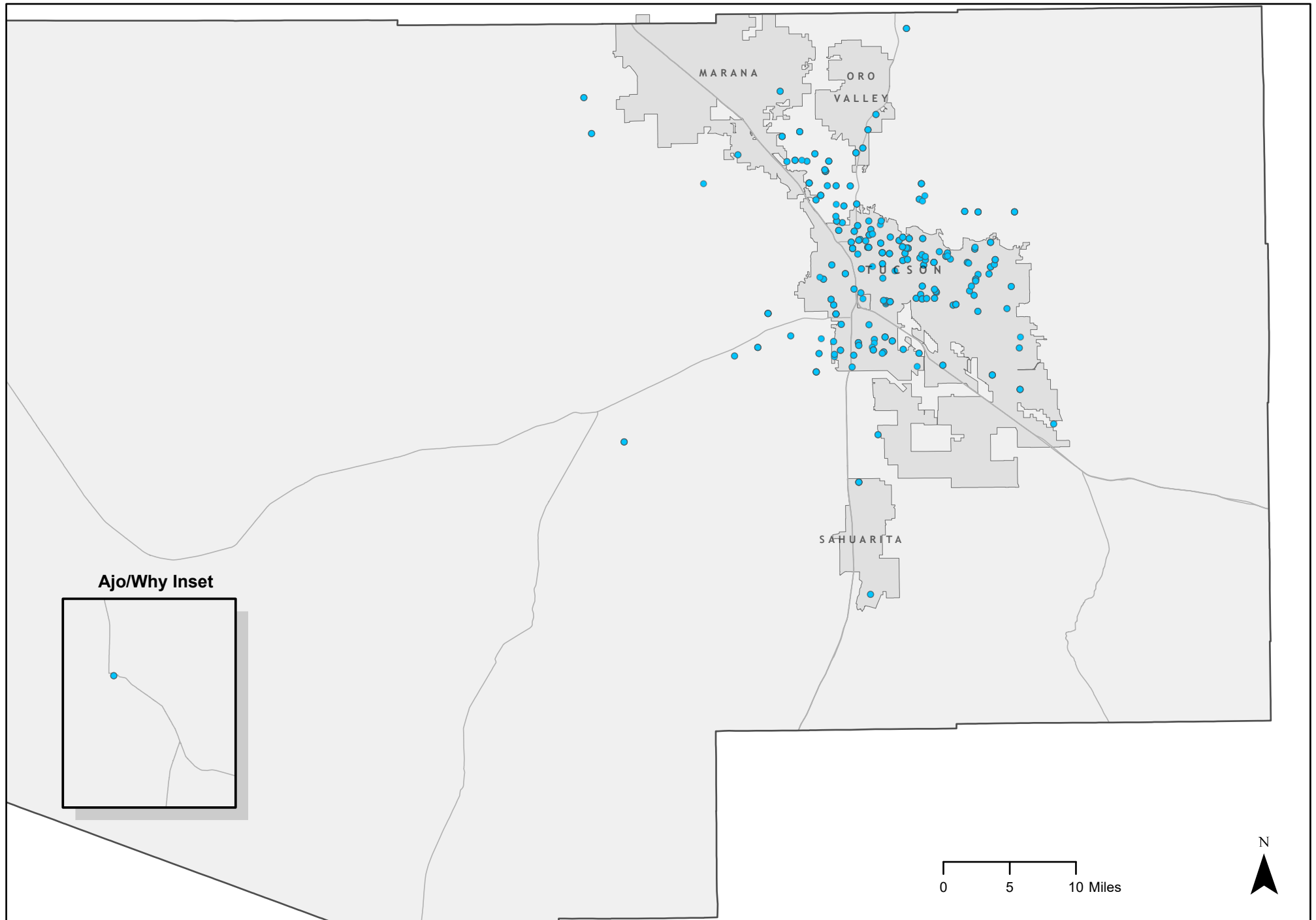
\$49,506,744.00

HOUSEHOLDS SERVED

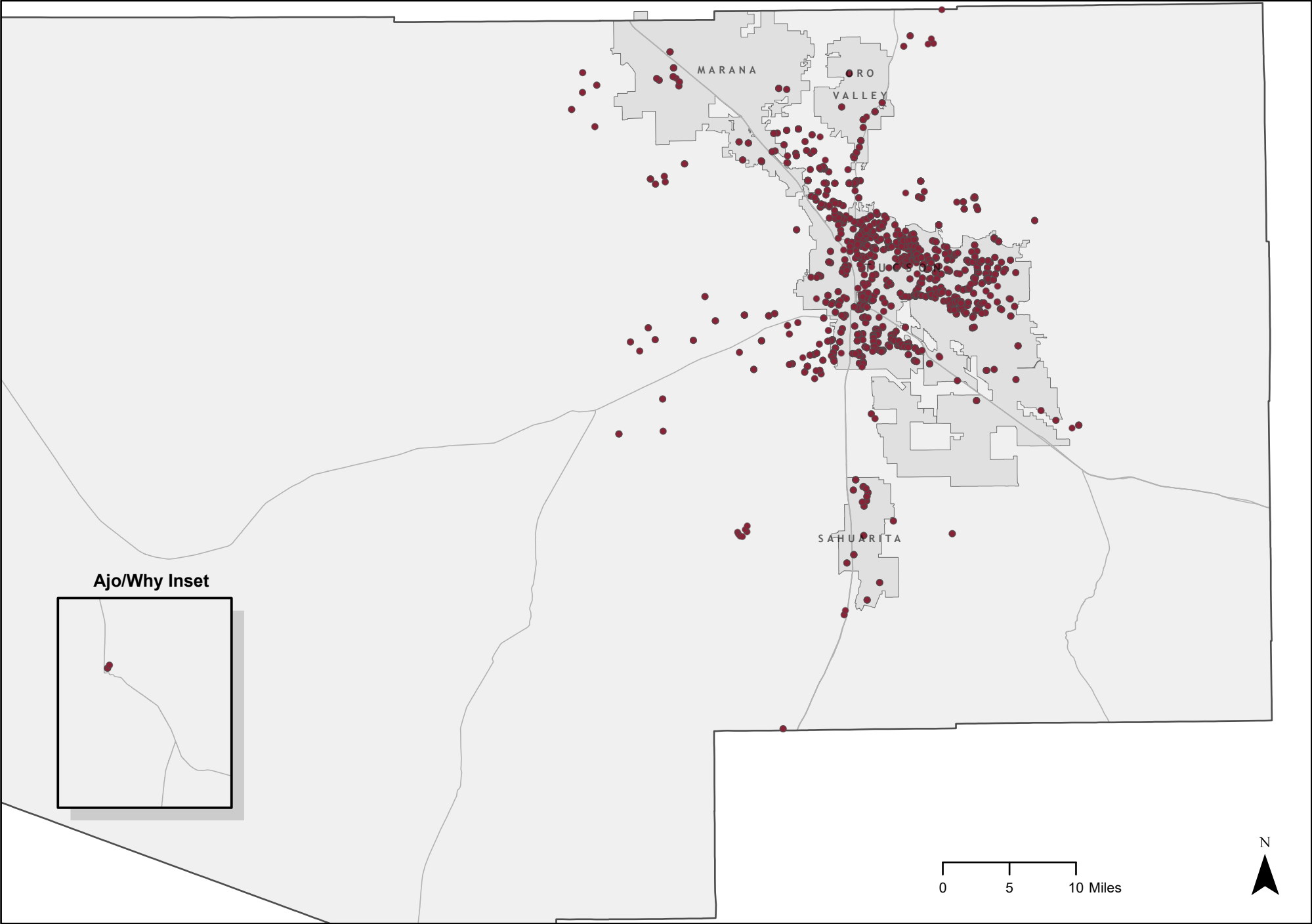


ATTACHMENT 2

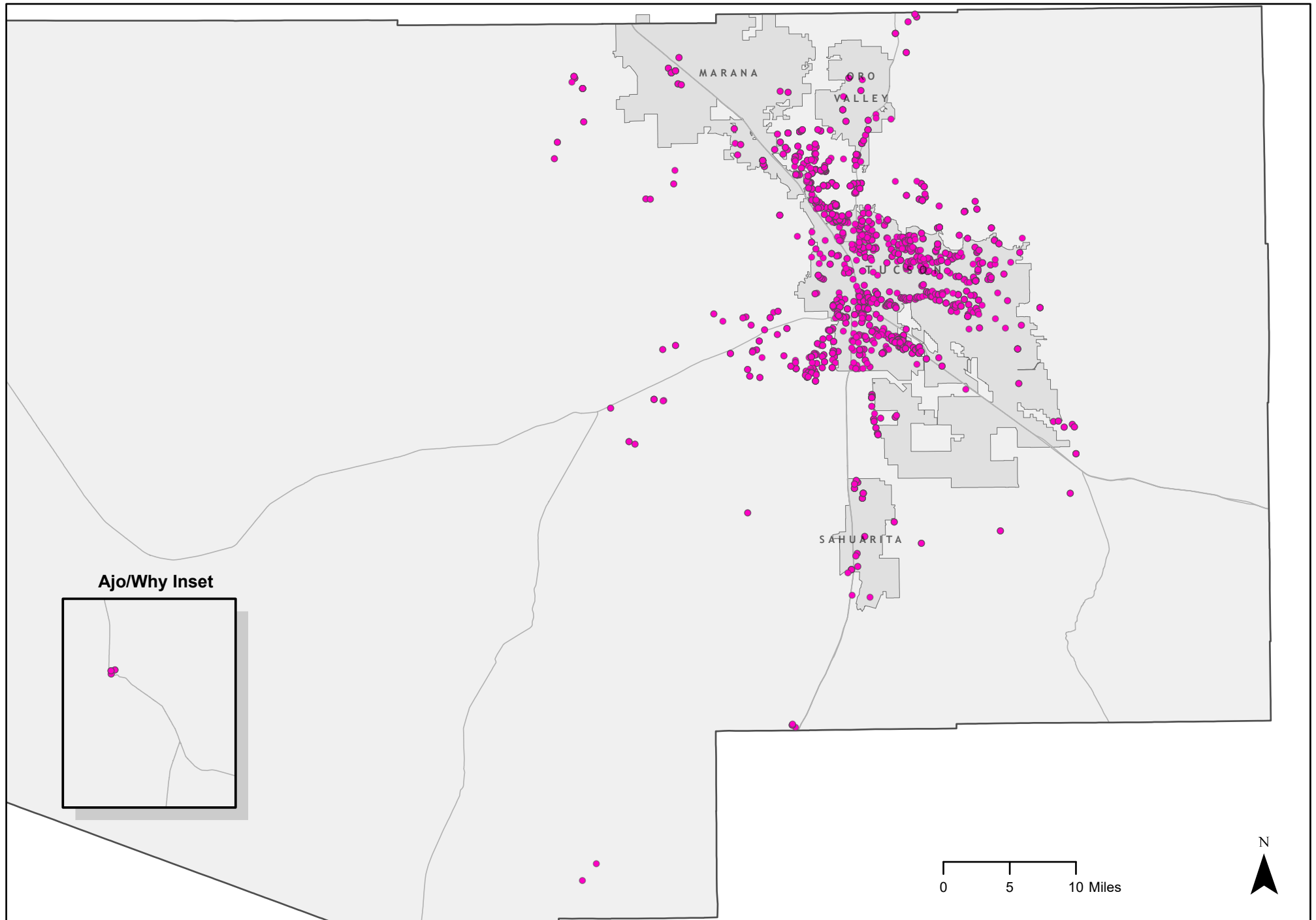
Households Served 1st Quarter 2021



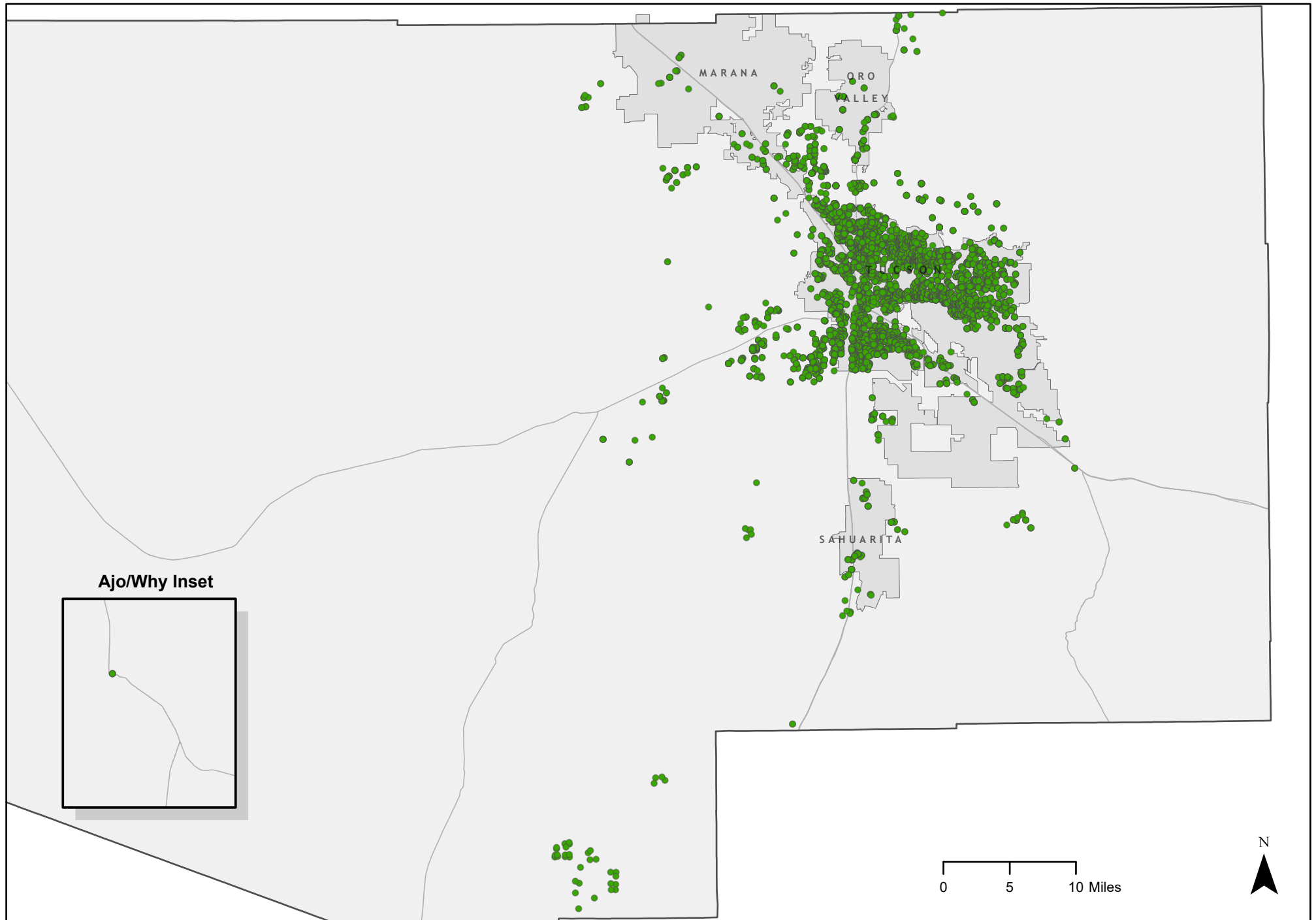
Households Served 2nd Quarter 2021



Households Served 3rd Quarter 2021

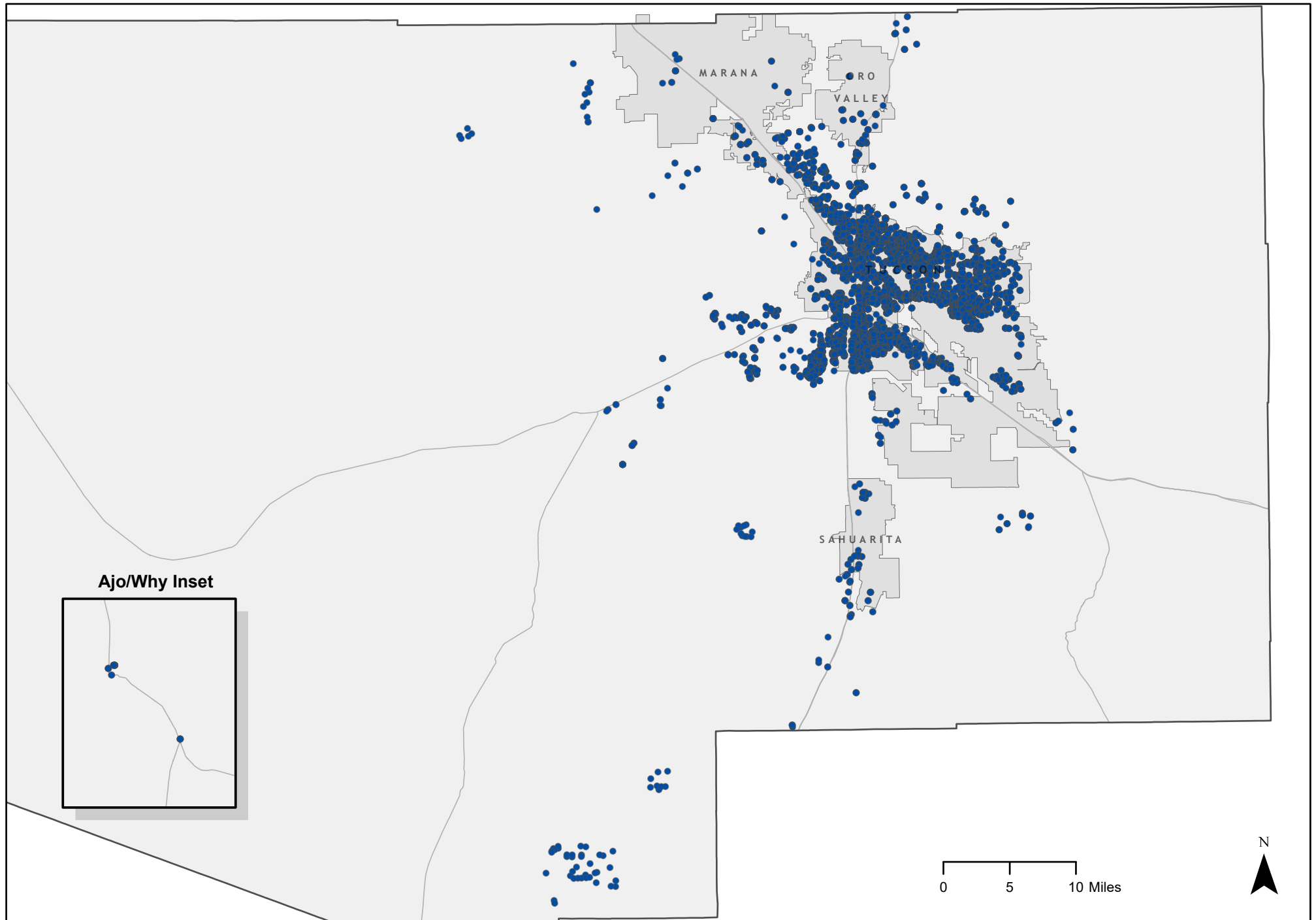


Households Served 4th Quarter 2021

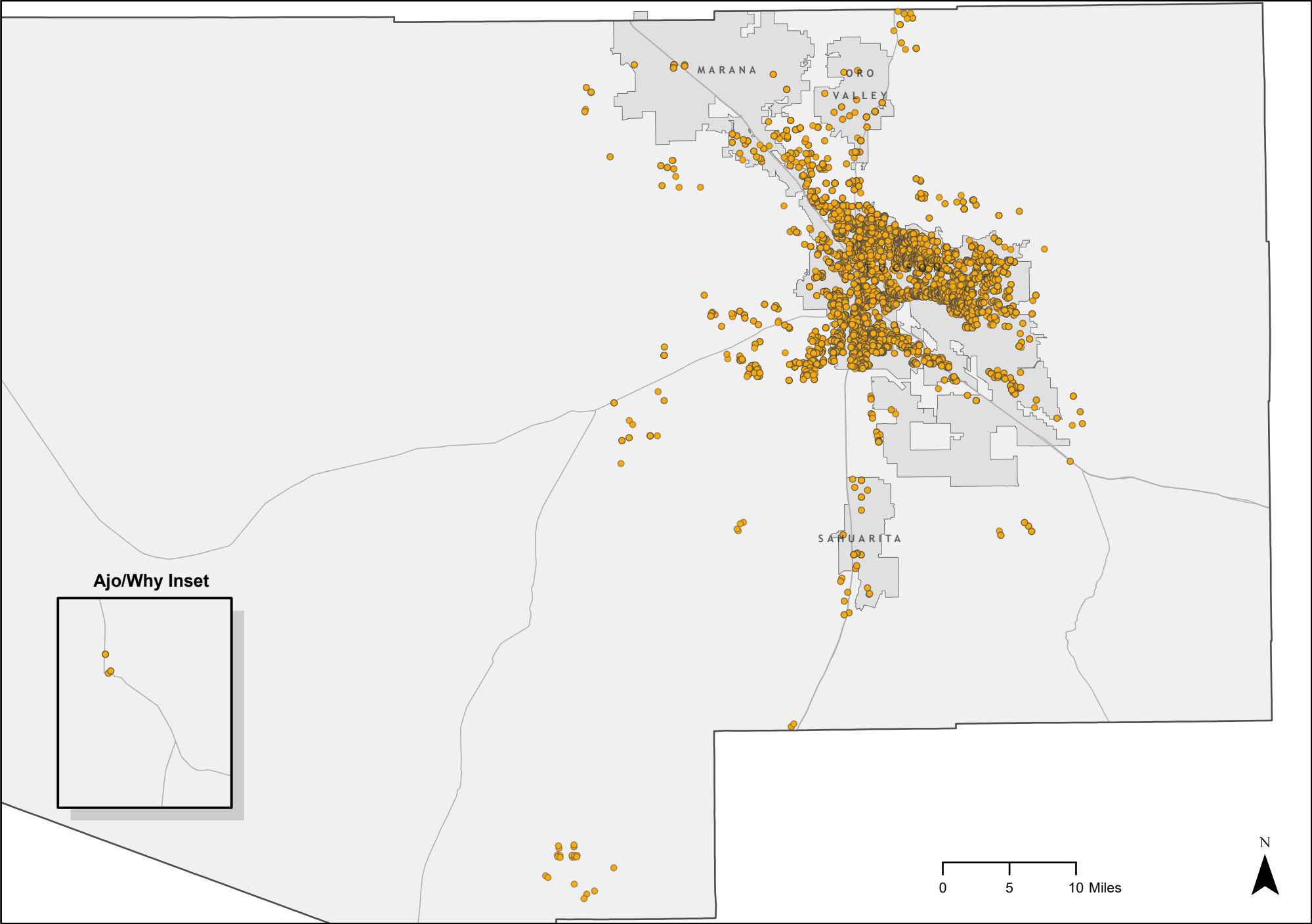


(This page intentionally left blank)

Households Served 1st Quarter 2022



Households Served 2nd Quarter 2022



Households Served 3rd Quarter 2022

