

## EXHIBIT A

### MSCP Restrictive Covenants: Pima County Owner & Grantor; FCD Receives Covenant

Property	APN	Acres	MapID
36TH STREET CORRIDOR	118033370	20.4	1
36TH STREET CORRIDOR	118033360	20.5	1
36TH STREET CORRIDOR	118033380	20.1	1
36TH STREET CORRIDOR	118071280	0.5	1
36TH STREET CORRIDOR	118071290	0.5	1
36TH STREET CORRIDOR	118071340	0.6	1
36TH STREET CORRIDOR	118071300	0.3	1
36TH STREET CORRIDOR	118071350	0.4	1
36TH STREET CORRIDOR	118071380	0.5	1
36TH STREET CORRIDOR	118071390	0.4	1
36TH STREET CORRIDOR	118071400	0.4	1
36TH STREET CORRIDOR	118071410	0.4	1
36TH STREET CORRIDOR	118071420	0.4	1
36TH STREET CORRIDOR	118072730	3.9	1
36TH STREET CORRIDOR	118072190	0.3	1
36TH STREET CORRIDOR	118072180	0.2	1
36TH STREET CORRIDOR	118072390	0.7	1
36TH STREET CORRIDOR	118072170	0.2	1
36TH STREET CORRIDOR	118071360	0.3	1
36TH STREET CORRIDOR	118072160	0.2	1
36TH STREET CORRIDOR	118072200	0.4	1
36TH STREET CORRIDOR	118072390	1.3	1
36TH STREET CORRIDOR	118072150	0.2	1
36TH STREET CORRIDOR	118071330	0.4	1
36TH STREET CORRIDOR	118072140	0.2	1
36TH STREET CORRIDOR	118072130	0.2	1
36TH STREET CORRIDOR	118071270	0.3	1
36TH STREET CORRIDOR	118072120	0.2	1
36TH STREET CORRIDOR	11803335A	17.2	1
36TH STREET CORRIDOR	118071130	0.3	1
36TH STREET CORRIDOR	118072720	2.0	1
36TH STREET CORRIDOR	118072110	0.2	1
36TH STREET CORRIDOR	118072210	0.3	1
36TH STREET CORRIDOR	118071370	0.3	1
36TH STREET CORRIDOR	118071310	0.3	1
36TH STREET CORRIDOR	118071140	0.2	1
36TH STREET CORRIDOR	118072230	0.2	1
36TH STREET CORRIDOR	118072220	0.4	1
36TH STREET CORRIDOR	118072100	0.2	1
36TH STREET CORRIDOR	118072090	0.2	1
36TH STREET CORRIDOR	118072080	0.2	1
36TH STREET CORRIDOR	118072070	0.2	1

<b>Property</b>	<b>APN</b>	<b>Acres</b>	<b>MapID</b>
36TH STREET CORRIDOR	118072060	0.3	1
36TH STREET CORRIDOR	118071150	0.2	1
36TH STREET CORRIDOR	118071430	0.3	1
36TH STREET CORRIDOR	118071320	0.4	1
36TH STREET CORRIDOR	118071160	0.2	1
36TH STREET CORRIDOR	118072270	0.2	1
36TH STREET CORRIDOR	118071440	0.2	1
36TH STREET CORRIDOR	118072240	0.3	1
36TH STREET CORRIDOR	118071170	0.2	1
36TH STREET CORRIDOR	118072050	0.2	1
36TH STREET CORRIDOR	118072280	0.2	1
36TH STREET CORRIDOR	118072390	8.7	1
36TH STREET CORRIDOR	118071250	0.2	1
36TH STREET CORRIDOR	118071260	0.2	1
36TH STREET CORRIDOR	118071180	0.2	1
36TH STREET CORRIDOR	118071240	0.2	1
36TH STREET CORRIDOR	118071450	0.2	1
36TH STREET CORRIDOR	118072040	0.2	1
36TH STREET CORRIDOR	118071230	0.2	1
36TH STREET CORRIDOR	118072260	0.4	1
36TH STREET CORRIDOR	118071190	0.2	1
36TH STREET CORRIDOR	118072250	0.3	1
36TH STREET CORRIDOR	118071460	0.2	1
36TH STREET CORRIDOR	118071220	0.2	1
36TH STREET CORRIDOR	118071200	0.2	1
36TH STREET CORRIDOR	118071480	0.2	1
36TH STREET CORRIDOR	118071470	0.2	1
36TH STREET CORRIDOR	118071210	0.2	1
36TH STREET CORRIDOR	118072290	0.2	1
36TH STREET CORRIDOR	118072030	0.2	1
36TH STREET CORRIDOR	118071520	0.3	1
36TH STREET CORRIDOR	118072020	0.2	1
36TH STREET CORRIDOR	118072390	0.9	1
36TH STREET CORRIDOR	118070670	0.4	1
36TH STREET CORRIDOR	118071490	0.2	1
36TH STREET CORRIDOR	118070680	0.3	1
36TH STREET CORRIDOR	118072390	1.3	1
36TH STREET CORRIDOR	118072300	0.2	1
36TH STREET CORRIDOR	118071510	0.3	1
36TH STREET CORRIDOR	118071500	0.3	1
36TH STREET CORRIDOR	118071530	0.3	1
36TH STREET CORRIDOR	118072010	0.3	1
36TH STREET CORRIDOR	118071050	0.5	1
36TH STREET CORRIDOR	118070690	0.2	1
36TH STREET CORRIDOR	118072310	0.2	1
36TH STREET CORRIDOR	118070660	0.2	1

<b>Property</b>	<b>APN</b>	<b>Acres</b>	<b>MapID</b>
36TH STREET CORRIDOR	118071060	0.4	1
36TH STREET CORRIDOR	118071540	0.3	1
36TH STREET CORRIDOR	118071070	0.3	1
36TH STREET CORRIDOR	118071080	0.3	1
36TH STREET CORRIDOR	118072000	0.3	1
36TH STREET CORRIDOR	118071610	0.3	1
36TH STREET CORRIDOR	118071600	0.2	1
36TH STREET CORRIDOR	118071090	0.4	1
36TH STREET CORRIDOR	118071590	0.2	1
36TH STREET CORRIDOR	118071100	0.3	1
36TH STREET CORRIDOR	118071580	0.2	1
36TH STREET CORRIDOR	118070700	0.2	1
36TH STREET CORRIDOR	118071550	0.2	1
36TH STREET CORRIDOR	118071110	0.3	1
36TH STREET CORRIDOR	118071040	0.3	1
36TH STREET CORRIDOR	118071570	0.2	1
36TH STREET CORRIDOR	118070650	0.2	1
36TH STREET CORRIDOR	118071120	0.3	1
36TH STREET CORRIDOR	118072320	0.2	1
36TH STREET CORRIDOR	118072330	0.4	1
36TH STREET CORRIDOR	118071560	0.2	1
36TH STREET CORRIDOR	118071990	0.3	1
36TH STREET CORRIDOR	118071030	0.2	1
36TH STREET CORRIDOR	118070740	0.2	1
36TH STREET CORRIDOR	118070730	0.2	1
36TH STREET CORRIDOR	118070720	0.2	1
36TH STREET CORRIDOR	118070710	0.2	1
36TH STREET CORRIDOR	118071020	0.2	1
36TH STREET CORRIDOR	118071620	0.3	1
36TH STREET CORRIDOR	118070640	0.2	1
36TH STREET CORRIDOR	118070750	0.2	1
36TH STREET CORRIDOR	118071010	0.2	1
36TH STREET CORRIDOR	118072340	0.3	1
36TH STREET CORRIDOR	118070760	0.2	1
36TH STREET CORRIDOR	118071980	0.2	1
36TH STREET CORRIDOR	118071630	0.3	1
36TH STREET CORRIDOR	118071640	0.2	1
36TH STREET CORRIDOR	118071000	0.2	1
36TH STREET CORRIDOR	118071650	0.2	1
36TH STREET CORRIDOR	118070770	0.2	1
36TH STREET CORRIDOR	118070630	0.2	1
36TH STREET CORRIDOR	118071660	0.2	1
36TH STREET CORRIDOR	118071670	0.2	1
36TH STREET CORRIDOR	118070780	0.2	1
36TH STREET CORRIDOR	118071690	0.2	1
36TH STREET CORRIDOR	118071680	0.2	1

<b>Property</b>	<b>APN</b>	<b>Acres</b>	<b>MapID</b>
36TH STREET CORRIDOR	118071970	0.2	1
36TH STREET CORRIDOR	118072350	0.4	1
36TH STREET CORRIDOR	118070790	0.2	1
36TH STREET CORRIDOR	118070850	0.2	1
36TH STREET CORRIDOR	118070860	0.2	1
36TH STREET CORRIDOR	118070990	0.2	1
36TH STREET CORRIDOR	118070870	0.2	1
36TH STREET CORRIDOR	118072360	0.4	1
36TH STREET CORRIDOR	118072390	2.4	1
36TH STREET CORRIDOR	118070620	0.2	1
36TH STREET CORRIDOR	118070880	0.3	1
36TH STREET CORRIDOR	118070800	0.2	1
36TH STREET CORRIDOR	118072390	0.2	1
36TH STREET CORRIDOR	118071960	0.2	1
36TH STREET CORRIDOR	118070890	0.2	1
36TH STREET CORRIDOR	118071780	0.2	1
36TH STREET CORRIDOR	118071770	0.2	1
36TH STREET CORRIDOR	118071760	0.2	1
36TH STREET CORRIDOR	118071750	0.2	1
36TH STREET CORRIDOR	118071740	0.2	1
36TH STREET CORRIDOR	118071730	0.2	1
36TH STREET CORRIDOR	118071720	0.2	1
36TH STREET CORRIDOR	118071710	0.2	1
36TH STREET CORRIDOR	118071700	0.2	1
36TH STREET CORRIDOR	118070610	0.2	1
36TH STREET CORRIDOR	118070980	0.2	1
36TH STREET CORRIDOR	118071790	0.2	1
36TH STREET CORRIDOR	118070820	0.4	1
36TH STREET CORRIDOR	118070830	0.3	1
36TH STREET CORRIDOR	118070900	0.3	1
36TH STREET CORRIDOR	118071950	0.2	1
36TH STREET CORRIDOR	118070930	0.2	1
36TH STREET CORRIDOR	118071800	0.2	1
36TH STREET CORRIDOR	118070600	0.2	1
36TH STREET CORRIDOR	118070940	0.2	1
36TH STREET CORRIDOR	118070810	0.3	1
36TH STREET CORRIDOR	118070970	0.2	1
36TH STREET CORRIDOR	118071810	0.3	1
36TH STREET CORRIDOR	118070910	0.3	1
36TH STREET CORRIDOR	118070840	0.3	1
36TH STREET CORRIDOR	118071820	0.2	1
36TH STREET CORRIDOR	118071830	0.2	1
36TH STREET CORRIDOR	118071900	0.2	1
36TH STREET CORRIDOR	118071940	0.2	1
36TH STREET CORRIDOR	118071920	0.3	1
36TH STREET CORRIDOR	118071840	0.2	1

Property	APN	Acres	MapID
36TH STREET CORRIDOR	118071910	0.3	1
36TH STREET CORRIDOR	118070920	0.3	1
36TH STREET CORRIDOR	118071850	0.2	1
36TH STREET CORRIDOR	118071860	0.2	1
36TH STREET CORRIDOR	118071870	0.2	1
36TH STREET CORRIDOR	118071880	0.2	1
36TH STREET CORRIDOR	118072390	0.7	1
36TH STREET CORRIDOR	118071890	0.3	1
36TH STREET CORRIDOR	118070590	0.2	1
36TH STREET CORRIDOR	118070960	0.2	1
36TH STREET CORRIDOR	118070950	0.2	1
36TH STREET CORRIDOR	118071930	0.2	1
36TH STREET CORRIDOR	119310460	31.1	1
36TH STREET CORRIDOR	119310260	3.3	1
36TH STREET CORRIDOR	119310250	1.0	1
36TH STREET CORRIDOR	119310470	3.1	1
36TH STREET CORRIDOR	119310300	1.7	1
36TH STREET CORRIDOR	119310430	1.5	1
36TH STREET CORRIDOR	119310310	1.5	1
36TH STREET CORRIDOR	119310270	1.6	1
36TH STREET CORRIDOR	119310340	2.2	1
36TH STREET CORRIDOR	119310280	1.5	1
36TH STREET CORRIDOR	119310420	1.2	1
36TH STREET CORRIDOR	119310320	1.1	1
36TH STREET CORRIDOR	119310290	1.4	1
36TH STREET CORRIDOR	119310410	1.8	1
36TH STREET CORRIDOR	119310400	1.6	1
36TH STREET CORRIDOR	119310330	1.3	1
36TH STREET CORRIDOR	119310460	2.3	1
36TH STREET CORRIDOR	119310390	1.9	1
36TH STREET CORRIDOR	119310360	2.2	1
36TH STREET CORRIDOR	119310370	1.8	1
36TH STREET CORRIDOR	119310380	1.5	1
36TH STREET CORRIDOR	119310350	2.9	1
36TH STREET CORRIDOR	119310440	1.8	1
36TH STREET CORRIDOR	119310450	1.9	1
A7 RANCH	20524011E	636.6	2
A7 RANCH	205240140	611.2	2
A7 RANCH	205410010	36.7	2
A7 RANCH	205410020	1,136.7	2
A7 RANCH	20541003A	1,596.7	2
A7 RANCH	20541003A	833.3	2
A7 RANCH	20541003A	1.3	2
A7 RANCH	205410040	159.7	2
A7 RANCH	205410050	40.1	2
A7 RANCH	20542001A	563.0	2

Property	APN	Acres	MapID
A7 RANCH	205420030	80.5	2
A7 RANCH	205410070	628.2	2
AGUA CALIENTE CREEK	20529007B	14.6	3
AGUA CALIENTE CREEK	20529004A	10.2	3
AGUA VERDE CREEK	30603001D	38.7	4
AGUA VERDE CREEK	30603001C	37.7	4
AGUA VERDE CREEK	306030020	119.9	4
AGUA VERDE CREEK	30603001A	79.2	4
AGUA VERDE CREEK	30603005C	18.9	4
AGUA VERDE CREEK	306030040	155.9	4
AGUA VERDE CREEK	30603005B	19.9	4
ANDRADA	21451001C	13.9	5
ANDRADA	21451001D	144.1	5
ARIVACA OPEN SPACE	302241230	18.9	6
ARIVACA OPEN SPACE	302241290	40.3	6
ARIVACA OPEN SPACE	302241280	39.1	6
ARIVACA OPEN SPACE	30228012C	25.7	6
ARTHUR PACK OS	225010220	147.0	7
ARTHUR PACK OS	22501023B	14.5	7
AVRA VALLEY I-10 WILDLIFE CORRIDOR	22601032D	9.7	8
BAR V RANCH	30607002A	150.1	9
BAR V RANCH	30615001A	160.3	9
BAR V RANCH	30615010A	314.8	9
BAR V RANCH	30615011A	314.6	9
BAR V RANCH	30615005B	481.0	9
BAR V RANCH	30615005A	239.1	9
BAR V RANCH	306150070	76.5	9
BAR V RANCH	30615008A	39.4	9
BEAR CREEK RANCH	114083460	17.3	10
BEE	208490030	39.9	11
BEE	208490010	40.5	11
BEE	208490020	79.8	11
BUCKELEW PROPERTIES	20854134A	26.6	12
BUCKELEW PROPERTIES	30119002D	59.0	12
BUCKELEW PROPERTIES	30119005E	6.0	12
BUCKELEW PROPERTIES	30119005H	498.7	12
CANOA RANCH	304690580	943.6	13
CANOA RANCH	304690480	71.6	13
CANOA RANCH	304690410	159.9	13
CANOA RANCH	304690490	49.9	13
CANOA RANCH	304690560	184.4	13
CANOA RANCH	304690570	1,377.0	13
CANOA RANCH	304690500	23.6	13
CANOA RANCH	304690510	11.3	13
CANOA RANCH	304690400	196.8	13
CANOA RANCH	30428001Z	20.0	13

Property	APN	Acres	MapID
CARPENTER RANCH	04050270 (Pinal County	80.0	14
CARPENTER RANCH	04050280 (Pinal County	79.9	14
CARPENTER RANCH	04050290 (Pinal County	79.9	14
CARPENTER RANCH	04050320 (Pinal County	40.1	14
CARPENTER RANCH	0405033A (Pinal County	80.3	14
CARPENTER RANCH	0405044P (Pinal County	100.2	14
CARPENTER RANCH	04050450 (Pinal County	200.3	14
CIENEGA CREEK NATURAL PRESERVE	30504001J	2.2	15
CIENEGA CREEK NATURAL PRESERVE	30504001J	3.0	15
CIENEGA CREEK NATURAL PRESERVE	305122640	23.3	15
CIENEGA CREEK NATURAL PRESERVE	305122670	17.7	15
CIENEGA CREEK NATURAL PRESERVE	30516002A	37.2	15
CIENEGA CREEK NATURAL PRESERVE	30516002B	0.4	15
CLYNE RANCH	30634006A	39.9	16
CLYNE RANCH	30634007A	109.6	16
CLYNE RANCH	30634006D	60.2	16
CLYNE RANCH	30634006F	100.1	16
CLYNE RANCH	30634006G	518.3	16
CLYNE RANCH	30634062D	48.9	16
COCHIE CANYON	21810005W	130.6	17
COCHIE CANYON	21809003A	117.9	17
COCHIE CANYON	218090040	39.4	17
COLOSSAL CAVE MOUNTAIN PARK	306020030	78.8	18
COLOSSAL CAVE MOUNTAIN PARK	306020040	79.7	18
CORTARO-HARTMAN	221060260	24.7	19
CORTARO-HARTMAN	221060230	19.1	19
CORTARO-HARTMAN	221060240	5.1	19
DAKOTA WASH	13711428T	22.6	20
DAKOTA WASH	13711428T	0.4	20
DAKOTA WASH	137150720	0.7	20
DIAMOND BELL RANCH	301580010	1.3	21
DIAMOND BELL RANCH	301580020	1.0	21
DIAMOND BELL RANCH	30119013B	10.2	21
DIAMOND BELL RANCH	30121007Q	159.8	21
DIAMOND BELL RANCH	30165417B	2.4	21
DIAMOND BELL RANCH	301250020	4.7	21
DOS PICOS	11608009B	40.9	22
DOS PICOS	116080110	18.5	22
DOT SECTION 7	22116028A	9.9	63
DOT SECTION 7	22116027A	9.7	63
DOUCETTE	13303332B	21.1	23
DYBVG	0405044J (Pinal County	109.6	24
ELEPHANT HEAD SEC.15 MIT. LANDS	30448002B	39.9	25
ELEPHANT HEAD SEC.15 MIT. LANDS (EASEL	30447001F	43.8	26
ELEPHANT HEAD SEC.15 MIT. LANDS (KREUT	30448002A	40.0	27
ELEPHANT HEAD SEC.15 MIT. LANDS (KREUT	304480030	18.9	27

Property	APN	Acres	MapID
ELEPHANT HEAD SEC.15 MIT. LANDS (KREU	30448006B	10.0	27
ELEPHANT HEAD SEC.15 MIT. LANDS (KREU	30448006C	10.0	27
EMPIRITA RANCH	30637003C	77.6	28
EMPIRITA RANCH	30618008D	757.8	28
EMPIRITA RANCH	30618031A	39.6	28
EMPIRITA RANCH	30618008E	40.1	28
EMPIRITA RANCH	30618029A	427.0	28
EMPIRITA RANCH	306180280	80.2	28
EMPIRITA RANCH	30618029B	98.0	28
EMPIRITA RANCH	30618008F	259.3	28
EMPIRITA RANCH	30618029A	109.1	28
EMPIRITA RANCH	306180300	40.0	28
EMPIRITA RANCH	30618009C	463.6	28
EMPIRITA RANCH	306180320	80.4	28
EMPIRITA RANCH	30618033A	202.3	28
EMPIRITA RANCH	30618033B	40.1	28
ESTHER AND DAVID TANG	216040200	40.4	29
HOLDEN DONATION	21206094A	3.4	30
HOLDEN DONATION	21206094B	3.4	30
HOLDEN DONATION	21206094E	3.6	30
HOLDEN DONATION	21206094C	3.8	30
HOLDEN DONATION	21206094D	4.2	30
HONEY BEE BIOLOGICAL CORRIDOR	219209180	52.9	31
HONEY BEE BIOLOGICAL CORRIDOR	22004006G	86.8	31
HONEY BEE BIOLOGICAL CORRIDOR	22004007C	7.0	31
INA PRESERVE (CR)	21404042G	54.1	32
KING 98 RANCH	30118001A	685.0	33
KING 98 RANCH	30119005B	354.7	33
LAZY C RANCH ESTATES	214540130	3.3	34
LINDA VISTA/PATRICK PROPERTY	216300200	9.3	35
LOS MORTEROS	226010160	40.1	36
LOS MORTEROS	22603033K	37.1	36
LOS MORTEROS	22603036A	31.4	36
LOS MORTEROS	22603033M	6.4	36
LOS MORTEROS	226030350	3.5	36
LOS MORTEROS	22102003B	26.0	36
M DIAMOND RANCH	205190020	38.2	37
M DIAMOND RANCH	205170030	40.1	37
M DIAMOND RANCH	20517005P	20.9	37
M DIAMOND RANCH	205170120	86.5	37
M DIAMOND RANCH	20517004D	20.2	37
M DIAMOND RANCH	20517004B	20.0	37
M DIAMOND RANCH	20517004A	19.9	37
M DIAMOND RANCH	20517005Q	26.4	37
M DIAMOND RANCH	20517007H	39.5	37
M DIAMOND RANCH	20517007G	39.9	37



<b>Property</b>	<b>APN</b>	<b>Acres</b>	<b>MapID</b>
M DIAMOND RANCH	20517007E	30.9	37
M DIAMOND RANCH	20517007C	39.6	37
M DIAMOND RANCH	20517007A	20.8	37
M DIAMOND RANCH	205170200	19.3	37
M DIAMOND RANCH	20517007D	9.0	37
M DIAMOND RANCH	20517010H	4.9	37
MADERA HIGHLANDS	30140002C	286.0	38
MADERA HIGHLANDS	30140002B	5.6	38
MADERA HIGHLANDS	30140002D	88.5	38
MALCOLMSON DONATION	21438001B	62.8	39
MARLEY RANCH	30141001B	606.1	40
MARLEY RANCH	30144001B	389.0	40
MARLEY RANCH	30144001B	48.5	40
MARLEY RANCH	30144001B	9.7	40
MARLEY RANCH	301450010	639.4	40
MARLEY RANCH	30141002C	1,176.5	40
MARLEY RANCH	30146017C	586.2	40
MARLEY RANCH	301460150	160.1	40
MARLEY RANCH	301460180	475.6	40
MARLEY RANCH	301460210	638.1	40
MARLEY RANCH	301460240	156.4	40
MARLEY RANCH	30146023B	39.3	40
MARLEY RANCH	30156002B	528.9	40
MARLEY RANCH	301550020	315.6	40
MARLEY RANCH	302110010	284.6	40
MARLEY RANCH	30208001B	274.6	40
ORACLE RIDGE	20516001D	161.2	41
ORACLE RIDGE	20516001A	150.3	41
ORACLE RIDGE	20516001C	226.4	41
ORACLE RIDGE	205040010	20.4	41
ORACLE RIDGE	205040030	20.9	41
ORACLE RIDGE	205070030	13.5	41
ORACLE RIDGE	205060050	20.3	41
ORACLE RIDGE	205060110	6.2	41
ORACLE RIDGE	205060060	18.9	41
ORACLE RIDGE	20506012A	7.6	41
ORACLE RIDGE	20506012A	1.0	41
ORACLE RIDGE	20506013A	5.0	41
ORACLE RIDGE	205060050	0.0	41
ORACLE RIDGE	205060060	1.2	41
ORACLE RIDGE	20506013B	4.1	41
ORACLE RIDGE	20506014A	12.5	41
ORACLE RIDGE	205060220	20.4	41
ORACLE RIDGE	20506015A	19.5	41
ORACLE RIDGE	205060230	15.2	41
ORACLE RIDGE	205060160	20.6	41

<b>Property</b>	<b>APN</b>	<b>Acres</b>	<b>MapID</b>
ORACLE RIDGE	20506009A	5.2	41
ORACLE RIDGE	20506008A	15.3	41
ORACLE RIDGE	205060070	17.7	41
ORACLE RIDGE	205060170	20.5	41
ORACLE RIDGE	205060210	20.2	41
ORACLE RIDGE	205060180	17.2	41
ORACLE RIDGE	205060200	20.6	41
ORACLE RIDGE	205060190	18.0	41
ORACLE RIDGE	205120020	13.7	41
ORACLE RIDGE	205120060	21.1	41
ORACLE RIDGE	205120090	20.7	41
ORACLE RIDGE	205120080	21.0	41
ORACLE RIDGE	205120070	20.8	41
ORACLE RIDGE	205120110	20.8	41
ORACLE RIDGE	205120100	20.5	41
OS PARK	208230260	40.2	42
PAINTED HILLS	116071250	37.4	43
PAINTED HILLS	11604164A	30.1	43
PAINTED HILLS	11604164B	5.5	43
PAINTED HILLS	116090060	150.9	43
PAINTED HILLS	11608001C	61.1	43
RANCHO SECO	30208002A	327.3	44
RANCHO SECO	30208002G	363.6	44
RANCHO SECO	30208003F	221.2	44
RANCHO SECO	30208004C	180.0	44
RANCHO SECO	30208004E	165.8	44
RANCHO SECO	302110040	186.1	44
RANCHO SECO	302110240	443.7	44
RANCHO SECO	30213001B	34.2	44
RANCHO SECO	302110050	247.0	44
RANCHO SECO	30208002C	363.3	44
RANCHO SECO	30208002D	81.8	44
RANCHO SECO	30208003E	236.0	44
RANCHO SECO	30204001A	239.5	44
RANCHO SECO	30211041A	46.2	44
RANCHO SECO	30203007A	81.0	44
RANCHO SECO	30208020B	21.0	44
RANCHO SECO	30213003E	0.3	44
RANCHO SECO	302040050	19.7	44
RANCHO SECO	30211040A	35.6	44
RANCHO SECO	302040060	20.6	44
RANCHO SECO	30208002E	82.2	44
RANCHO SECO	30203008A	39.7	44
RANCHO SECO	302040070	20.8	44
RANCHO SECO	302040030	18.4	44
RANCHO SECO	302040040	20.6	44

<b>Property</b>	<b>APN</b>	<b>Acres</b>	<b>MapID</b>
RANCHO SECO	30211010A	280.9	44
RANCHO SECO	302560010	73.5	44
RANCHO SECO	302070150	18.6	44
RANCHO SECO	30208006G	546.1	44
RANCHO SECO	30208006F	312.8	44
RANCHO SECO	30206001A	122.6	44
RANCHO SECO	302060020	17.0	44
RANCHO SECO	30208005B	320.8	44
RANCHO SECO	302070020	17.9	44
RANCHO SECO	302070110	10.1	44
RANCHO SECO	302070120	16.1	44
RANCHO SECO	30256003C	33.8	44
RANCHO SECO	302070130	21.0	44
RANCHO SECO	302070030	6.9	44
RANCHO SECO	302070040	2.2	44
RANCHO SECO	302070100	18.1	44
RANCHO SECO	302060030	20.4	44
RANCHO SECO	302070040	9.2	44
RANCHO SECO	302560180	163.0	44
RANCHO SECO	302070030	4.8	44
RANCHO SECO	302070090	17.2	44
RANCHO SECO	302070140	9.4	44
RANCHO SECO	302070050	10.8	44
RANCHO SECO	302060040	10.2	44
RANCHO SECO	302070160	20.7	44
RANCHO SECO	302060050	18.9	44
RANCHO SECO	30208006D	165.7	44
RANCHO SECO	302070080	14.8	44
RANCHO SECO	302060060	20.7	44
RANCHO SECO	302070060	19.4	44
RANCHO SECO	302060070	19.1	44
RANCHO SECO	30211012B	161.4	44
RANCHO SECO	302110090	105.1	44
RANCHO SECO	302060090	20.6	44
RANCHO SECO	302100010	10.5	44
RANCHO SECO	302070070	12.9	44
RANCHO SECO	302060080	5.1	44
RANCHO SECO	302060110	20.7	44
RANCHO SECO	302100010	5.8	44
RANCHO SECO	302060100	16.6	44
RANCHO SECO	302060130	20.7	44
RANCHO SECO	302060120	20.4	44
RANCHO SECO	30211013B	79.3	44
RANCHO SECO	30211013A	46.7	44
RANCHO SECO	302060140	10.9	44
RANCHO SECO	30208005A	42.7	44

Property	APN	Acres	MapID
RANCHO SECO	302110200	580.2	44
RANCHO SECO	302110190	150.1	44
RANCHO SECO	302110150	76.6	44
RANCHO SECO	302110140	231.2	44
RANCHO SECO	302080080	322.5	44
RANCHO SECO	30208006E	305.3	44
RANCHO SECO	30208005C	329.0	44
RANCHO SECO	302080070	80.4	44
RANCHO SECO	302310030	204.9	44
RANCHO SECO	302240030	238.2	44
RANCHO SECO	302240040	40.1	44
RANCHO SECO	302240090	39.9	44
RANCHO SECO	302250030	20.7	44
RANCHO SECO	302240100	77.6	44
RANCHO SECO	302580010	83.1	44
RANCHO SECO	302240130	163.5	44
RANCHO SECO	30258002B	131.8	44
RANCHO SECO	30258003B	57.8	44
RANCHO SECO	302241690	39.3	44
RANCHO SECO	30213001B	93.3	44
REID PARCEL	21630019F	3.3	45
SAN DOMINGO FLOOD PRONE AREA	20536069B	6.7	46
SAN DOMINGO FLOOD PRONE AREA	20536137C	7.7	46
SANDS RANCH	30634040E	4,875.8	47
SANDS RANCH	30634020C	77.8	47
SANDS RANCH	30634020B	79.9	47
SIX BAR RANCH	20516002C	637.2	48
SIX BAR RANCH	20516002B	631.2	48
SIX BAR RANCH	20516003A	175.4	48
SIX BAR RANCH	20516002F	79.6	48
SIX BAR RANCH	20516002E	319.6	48
SIX BAR RANCH	20516002D	319.9	48
SIX BAR RANCH	205230010	116.5	48
SIX BAR RANCH	205230040	361.1	48
SIX BAR RANCH	205230020	644.9	48
SOPORI RANCH	30430015C	489.1	49
SOPORI RANCH	30211002J	539.6	49
SOPORI RANCH	30211002J	3.6	49
SOPORI RANCH	30211002M	311.3	49
SOPORI RANCH	30211002J	11.4	49
SOPORI RANCH	30212001C	10.9	49
SOPORI RANCH	30211002M	26.1	49
SOPORI RANCH	30211002C	42.4	49
SOPORI RANCH	30211002F	6.4	49
SOPORI RANCH	30211002F	510.5	49
SOPORI RANCH	30211002E	361.0	49

Property	APN	Acres	MapID
SOPORI RANCH	30211002Q	109.5	49
SOPORI RANCH	30211002S	45.0	49
SOPORI RANCH	30213006A	195.1	49
SOPORI RANCH	30211002H	214.5	49
SOPORI RANCH	30211021A	664.5	49
SOPORI RANCH	30211021B	82.0	49
SOPORI RANCH	30211021C	20.8	49
SOPORI RANCH	302310010	153.6	49
SOPORI RANCH	302310020	82.2	49
SOPORI RANCH	302310040	40.7	49
SOPORI RANCH	302310090	164.7	49
SOPORI RANCH	302310060	40.0	49
SOUTH WILMOT LLC	30447001E	35.5	50
SOUTHEAST CORRIDOR	30612002K	83.8	51
SOUTHEAST CORRIDOR	306240260	19.3	51
SOUTHEAST CORRIDOR	306210160	38.9	51
SOUTHEAST REGIONAL PARK (PPC)	305010120 (Partial)	52.8	52
STEVENS	224460070	34.3	53
SWEETWATER PRESERVE	214400210	41.5	54
SWEETWATER PRESERVE	214400320	40.5	54
SWEETWATER PRESERVE	214460410	4.0	54
SWEETWATER PRESERVE	214460430	3.9	54
SWEETWATER PRESERVE	214460440	3.4	54
SWEETWATER PRESERVE	214460450	3.3	54
SWEETWATER PRESERVE	214460460	3.4	54
SWEETWATER PRESERVE	214460470	3.3	54
SWEETWATER PRESERVE	214460480	3.3	54
SWEETWATER PRESERVE	214460490	4.8	54
SWEETWATER PRESERVE	214460500	3.3	54
SWEETWATER PRESERVE	214460510	3.7	54
SWEETWATER PRESERVE	214460520	4.0	54
SWEETWATER PRESERVE	214460530	3.5	54
SWEETWATER PRESERVE	214460620	3.3	54
SWEETWATER PRESERVE	214460630	5.3	54
SWEETWATER PRESERVE	21449034K	621.4	54
SWEETWATER PRESERVE	214460420	3.4	54
SWEETWATER PRESERVE	214460400	4.0	54
SWEETWATER PRESERVE	214460640	4.9	54
SWEETWATER PRESERVE	214460780	9.2	54
SWEETWATER PRESERVE	214460540	4.2	54
SWEETWATER PRESERVE	214460390	5.6	54
SWEETWATER PRESERVE	214460560	3.9	54
SWEETWATER PRESERVE	214460550	3.8	54
SWEETWATER PRESERVE	214460380	3.3	54
SWEETWATER PRESERVE	214460320	5.3	54
SWEETWATER PRESERVE	214460370	3.1	54

Property	APN	Acres	MapID
SWEETWATER PRESERVE	214460790	0.3	54
SWEETWATER PRESERVE	214460770	5.1	54
SWEETWATER PRESERVE	214460760	3.3	54
SWEETWATER PRESERVE	21446002B	2.9	54
SWEETWATER PRESERVE	214460330	3.9	54
SWEETWATER PRESERVE	214460570	3.8	54
SWEETWATER PRESERVE	214460610	3.3	54
SWEETWATER PRESERVE	214460600	3.3	54
SWEETWATER PRESERVE	214460590	3.7	54
SWEETWATER PRESERVE	214460340	3.7	54
SWEETWATER PRESERVE	214460650	3.8	54
SWEETWATER PRESERVE	214460350	3.3	54
SWEETWATER PRESERVE	214460360	3.2	54
SWEETWATER PRESERVE	214460580	4.5	54
SWEETWATER PRESERVE	214460660	4.5	54
SWEETWATER PRESERVE	214460670	4.2	54
SWEETWATER PRESERVE	214460680	4.4	54
SWEETWATER PRESERVE	214460690	3.8	54
SWEETWATER PRESERVE	214460750	3.5	54
SWEETWATER PRESERVE	214460720	3.9	54
SWEETWATER PRESERVE	214460700	3.8	54
SWEETWATER PRESERVE	214460710	4.5	54
SWEETWATER PRESERVE	214460740	3.6	54
SWEETWATER PRESERVE	214460730	3.5	54
TANQUE VERDE & HOUGHTON PARTNERS L	13301026D	44.3	55
TANQUE VERDE & HOUGHTON PARTNERS L	13301027A	33.4	55
TERRA RANCHO GRANDE	13301043B	72.6	56
TORTOLITA MOUNTAIN PARK	21901001M	326.0	57
TORTOLITA MOUNTAIN PARK	21901001J	164.1	57
TORTOLITA MOUNTAIN PARK	21901001B	175.2	57
TORTOLITA MOUNTAIN PARK	21901001K	287.0	57
TORTOLITA MOUNTAIN PARK	21901008G	313.9	57
TORTOLITA MOUNTAIN PARK	21901008H	318.7	57
TORTOLITA MOUNTAIN PARK	219010090	637.9	57
TUCSON MOUNTAIN PARK	11607165A	36.8	58
TUCSON MOUNTAIN PARK	11607165B	20.4	58
TUCSON MOUNTAIN PARK	21204003E	56.3	58
TUCSON MOUNTAIN PARK	21201002H	154.4	58
TUCSON MOUNTAIN PARK	21204003N	200.2	58
TUCSON MOUNTAIN PARK	21201002B	9.3	58
TUCSON MOUNTAIN PARK	21211015A	1.4	58
TUCSON MOUNTAIN PARK	212100030	215.6	58
TUCSON MOUNTAIN PARK	212110220	21.8	58
TUCSON MOUNTAIN PARK	212110230	20.3	58
TUCSON MOUNTAIN PARK	11609011A	24.1	58
TUCSON MOUNTAIN PARK	212110290	7.9	58

Property	APN	Acres	MapID
TUCSON MOUNTAIN PARK	212110370	10.0	58
TUCSON MOUNTAIN PARK	212110300	6.6	58
TUCSON MOUNTAIN PARK	21211049A	14.1	58
TUCSON MOUNTAIN PARK	21211049B	4.2	58
TUCSON MOUNTAIN PARK	212110310	4.0	58
TUCSON MOUNTAIN PARK	212110360	2.2	58
TUCSON MOUNTAIN PARK	212110350	6.0	58
TUCSON MOUNTAIN PARK	212110330	9.8	58
TUCSON MOUNTAIN PARK	119351860	114.0	58
TUCSON MOUNTAIN PARK	11934001D	10.7	58
TUCSON MOUNTAIN PARK	11934001K	309.8	58
TUCSON MOUNTAIN PARK	11934001J	301.8	58
TUCSON MOUNTAIN PARK	11941264A	25.3	58
TUCSON MOUNTAIN PARK	11941175D	0.0	58
TUCSON MOUNTAIN PARK	11941266F	0.4	58
TUCSON MOUNTAIN PARK	11941266K	46.7	58
TUCSON MOUNTAIN PARK	119351640	13.3	58
TUCSON MOUNTAIN PARK	119351650	5.5	58
TUCSON MOUNTAIN PARK	11934001H	3.6	58
TUCSON MOUNTAIN PARK	11941277D	2.6	58
TUCSON MOUNTAIN PARK	119351690	1.1	58
TUCSON MOUNTAIN PARK	11935179C	3.4	58
TUCSON MOUNTAIN PARK	11935179D	6.8	58
TUCSON MOUNTAIN PARK	119351880	134.5	58
TUCSON MOUNTAIN PARK	119351900	0.8	58
TUCSON MOUNTAIN PARK BIOLOGICAL COF	11628001G	9.9	59
TUMAMOC	11626754A	277.0	60
VALENCIA ARCHAEOLOGICAL PRESERVE	13801006C	67.1	61
WALDEN	30610017H	22.2	62
WALDEN	30610017J	356.5	62
WALDEN	30610017F	0.1	62
WALDEN	30610017G	67.7	62
		<b>56,811.5</b>	

# EXHIBIT B

## MSCP

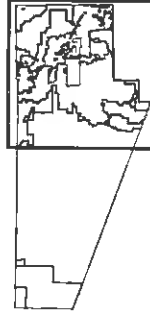
### Restrictive Covenants: Pima County Owner & Grantor, FCD Receives Covenant

Subject Parcels  
(56,812 acres)

See Exhibit A for key to property IDs.

See Exhibit C for parcel detail maps.

Pima County Index Map



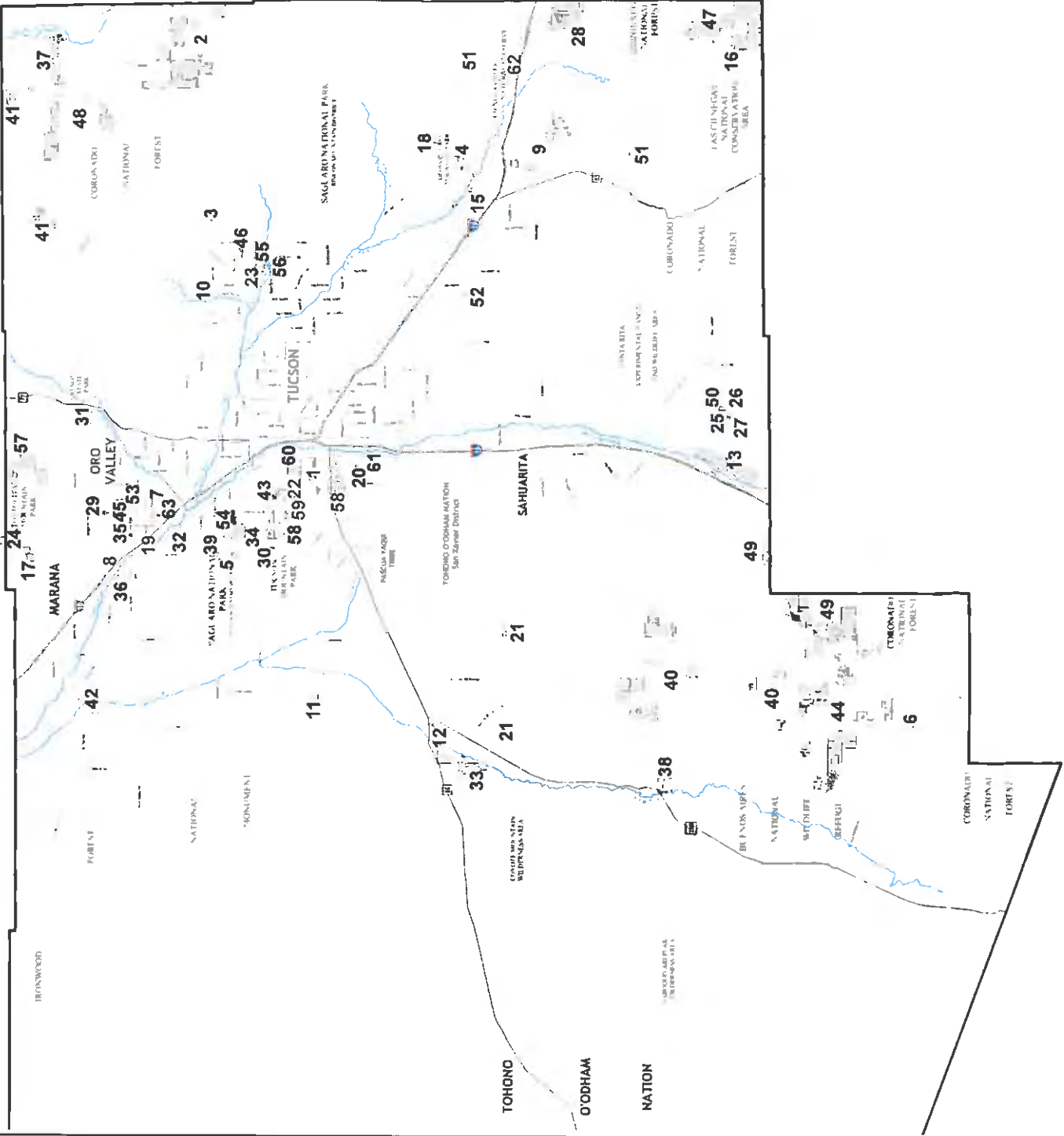
North Arrow Scale 1" = 50.00 Miles

All information presented on this map is for informational purposes only and is not intended to be used for legal or financial purposes. The user of this map should consult with a qualified professional for more information. The user of this map should also consult with the appropriate government agency for more information. The user of this map should also consult with the appropriate government agency for more information. The user of this map should also consult with the appropriate government agency for more information.



GEOGRAPHIC INFORMATION SYSTEMS  
201 North Main Avenue, Suite 200  
Tucson, Arizona 85701  
TELEPHONE: 520.797.1400

10/10/2016





14S13E

S GREASEWOOD RD

18

17

16

15

W STARR PASS BL

19

20

118033360

118033370

21

See supplemental map for parcel detail.

22

See supplemental map for parcel detail.

118033380



11803335A

30

29

28

27

S MISSION RD

WAJO WY

WAJO HY

31

32

33

34

**MSCP**  
**Restrictive Covenants:**  
**Pima County Owner & Grantor;**  
**FCD Receives Covenant**

# EXHIBIT C



0 1,500 ft



36th Street Corridor (1)

**36TH & MISSION (1-207)**

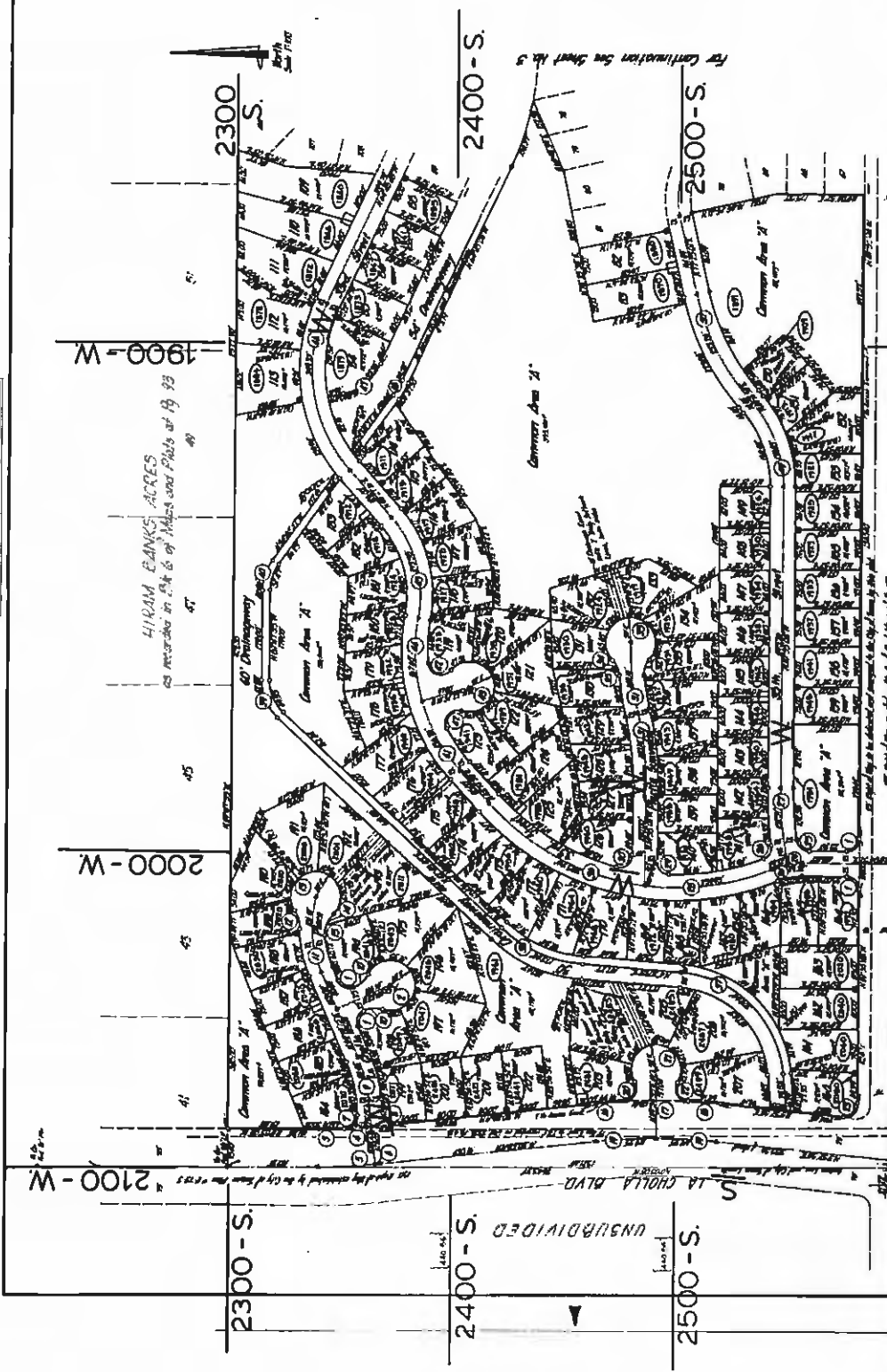
**MP 34020**

**RECORDED:      MAY 15, 1981**

**\*\*\* THE FOLLOWING PLAT IS AN ANNOTATED  
VERSION OF THE ORIGINAL DOCUMENT. IT HAS  
BEEN ALTERED BY PIMA COUNTY DEVELOPMENT  
SERVICES TO SHOW ADDITIONAL INFORMATION.  
ORIGINAL COPIES MAY BE OBTAINED FROM THE  
PIMA COUNTY RECORDER\*\*\***



ANNOTATED COPY



Curve Data Table		
Lot	Bearing	Length
1	S 89°53'00" W	219.63
2	S 89°53'00" W	219.63
3	S 89°53'00" W	219.63
4	S 89°53'00" W	219.63
5	S 89°53'00" W	219.63
6	S 89°53'00" W	219.63
7	S 89°53'00" W	219.63
8	S 89°53'00" W	219.63
9	S 89°53'00" W	219.63
10	S 89°53'00" W	219.63
11	S 89°53'00" W	219.63
12	S 89°53'00" W	219.63
13	S 89°53'00" W	219.63
14	S 89°53'00" W	219.63
15	S 89°53'00" W	219.63
16	S 89°53'00" W	219.63
17	S 89°53'00" W	219.63
18	S 89°53'00" W	219.63
19	S 89°53'00" W	219.63
20	S 89°53'00" W	219.63
21	S 89°53'00" W	219.63
22	S 89°53'00" W	219.63
23	S 89°53'00" W	219.63
24	S 89°53'00" W	219.63
25	S 89°53'00" W	219.63
26	S 89°53'00" W	219.63
27	S 89°53'00" W	219.63
28	S 89°53'00" W	219.63
29	S 89°53'00" W	219.63
30	S 89°53'00" W	219.63
31	S 89°53'00" W	219.63
32	S 89°53'00" W	219.63
33	S 89°53'00" W	219.63
34	S 89°53'00" W	219.63
35	S 89°53'00" W	219.63
36	S 89°53'00" W	219.63
37	S 89°53'00" W	219.63
38	S 89°53'00" W	219.63
39	S 89°53'00" W	219.63
40	S 89°53'00" W	219.63
41	S 89°53'00" W	219.63
42	S 89°53'00" W	219.63
43	S 89°53'00" W	219.63
44	S 89°53'00" W	219.63
45	S 89°53'00" W	219.63
46	S 89°53'00" W	219.63
47	S 89°53'00" W	219.63
48	S 89°53'00" W	219.63
49	S 89°53'00" W	219.63
50	S 89°53'00" W	219.63
51	S 89°53'00" W	219.63
52	S 89°53'00" W	219.63
53	S 89°53'00" W	219.63
54	S 89°53'00" W	219.63
55	S 89°53'00" W	219.63
56	S 89°53'00" W	219.63
57	S 89°53'00" W	219.63
58	S 89°53'00" W	219.63
59	S 89°53'00" W	219.63
60	S 89°53'00" W	219.63
61	S 89°53'00" W	219.63
62	S 89°53'00" W	219.63
63	S 89°53'00" W	219.63
64	S 89°53'00" W	219.63
65	S 89°53'00" W	219.63
66	S 89°53'00" W	219.63
67	S 89°53'00" W	219.63
68	S 89°53'00" W	219.63
69	S 89°53'00" W	219.63
70	S 89°53'00" W	219.63
71	S 89°53'00" W	219.63
72	S 89°53'00" W	219.63
73	S 89°53'00" W	219.63
74	S 89°53'00" W	219.63
75	S 89°53'00" W	219.63
76	S 89°53'00" W	219.63
77	S 89°53'00" W	219.63
78	S 89°53'00" W	219.63
79	S 89°53'00" W	219.63
80	S 89°53'00" W	219.63
81	S 89°53'00" W	219.63
82	S 89°53'00" W	219.63
83	S 89°53'00" W	219.63
84	S 89°53'00" W	219.63
85	S 89°53'00" W	219.63
86	S 89°53'00" W	219.63
87	S 89°53'00" W	219.63
88	S 89°53'00" W	219.63
89	S 89°53'00" W	219.63
90	S 89°53'00" W	219.63
91	S 89°53'00" W	219.63
92	S 89°53'00" W	219.63
93	S 89°53'00" W	219.63
94	S 89°53'00" W	219.63
95	S 89°53'00" W	219.63
96	S 89°53'00" W	219.63
97	S 89°53'00" W	219.63
98	S 89°53'00" W	219.63
99	S 89°53'00" W	219.63
100	S 89°53'00" W	219.63

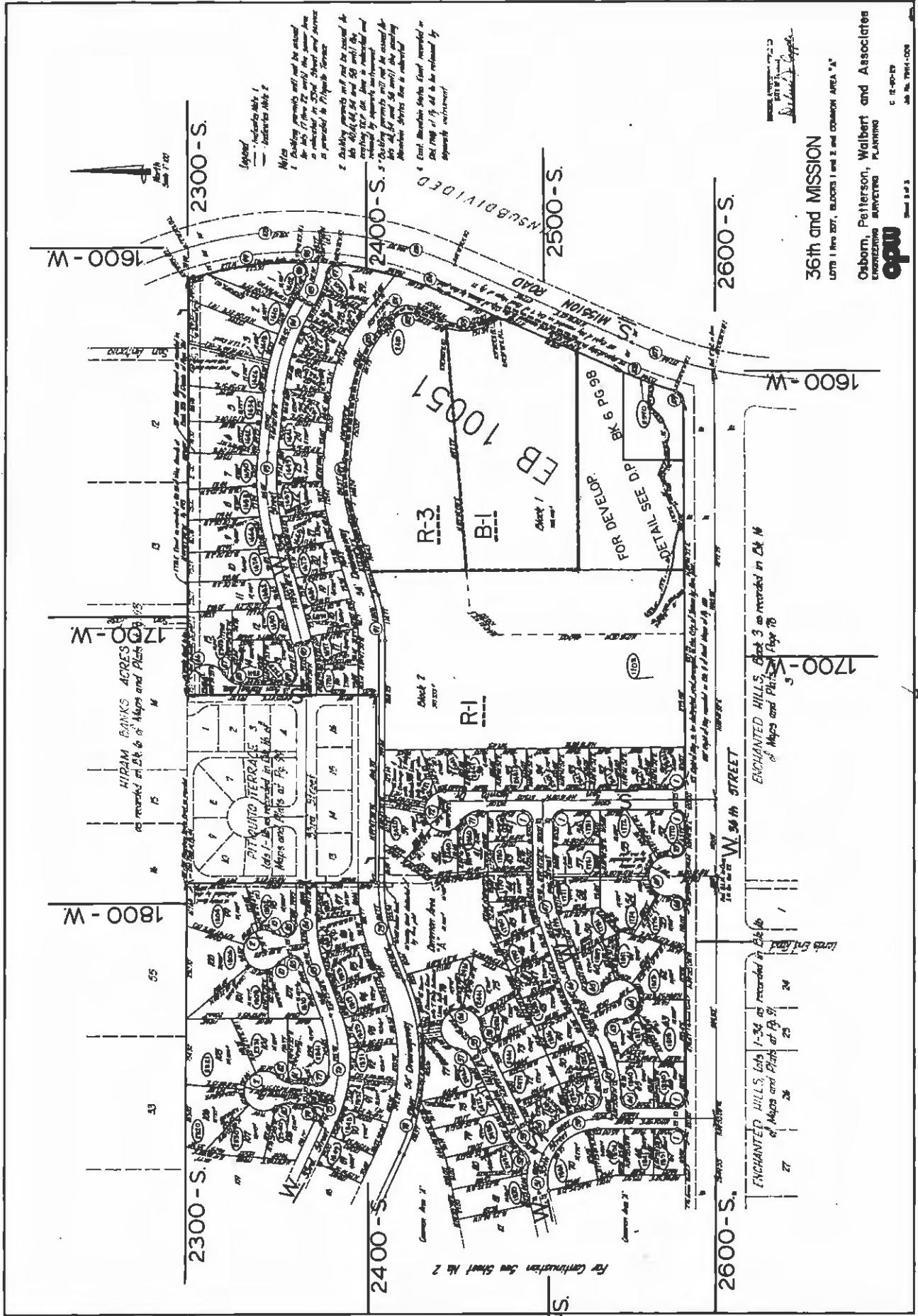
ENCHANTED HILLS, Lots 1-34 as reported in  
 SA 116 24 Mag-Ord Plans of 19 91

ENCHANTED HILLS, Lots 1-78 as reported in Ak 12 of Maps  
 Page 87

Curve Data Table		
Lot	Bearing	Length
1	S 89°53'00" W	219.63
2	S 89°53'00" W	219.63
3	S 89°53'00" W	219.63
4	S 89°53'00" W	219.63
5	S 89°53'00" W	219.63
6	S 89°53'00" W	219.63
7	S 89°53'00" W	219.63
8	S 89°53'00" W	219.63
9	S 89°53'00" W	219.63
10	S 89°53'00" W	219.63
11	S 89°53'00" W	219.63
12	S 89°53'00" W	219.63
13	S 89°53'00" W	219.63
14	S 89°53'00" W	219.63
15	S 89°53'00" W	219.63
16	S 89°53'00" W	219.63
17	S 89°53'00" W	219.63
18	S 89°53'00" W	219.63
19	S 89°53'00" W	219.63
20	S 89°53'00" W	219.63
21	S 89°53'00" W	219.63
22	S 89°53'00" W	219.63
23	S 89°53'00" W	219.63
24	S 89°53'00" W	219.63
25	S 89°53'00" W	219.63
26	S 89°53'00" W	219.63
27	S 89°53'00" W	219.63
28	S 89°53'00" W	219.63
29	S 89°53'00" W	219.63
30	S 89°53'00" W	219.63
31	S 89°53'00" W	219.63
32	S 89°53'00" W	219.63
33	S 89°53'00" W	219.63
34	S 89°53'00" W	219.63
35	S 89°53'00" W	219.63
36	S 89°53'00" W	219.63
37	S 89°53'00" W	219.63
38	S 89°53'00" W	219.63
39	S 89°53'00" W	219.63
40	S 89°53'00" W	219.63
41	S 89°53'00" W	219.63
42	S 89°53'00" W	219.63
43	S 89°53'00" W	219.63
44	S 89°53'00" W	219.63
45	S 89°53'00" W	219.63
46	S 89°53'00" W	219.63
47	S 89°53'00" W	219.63
48	S 89°53'00" W	219.63
49	S 89°53'00" W	219.63
50	S 89°53'00" W	219.63
51	S 89°53'00" W	219.63
52	S 89°53'00" W	219.63
53	S 89°53'00" W	219.63
54	S 89°53'00" W	219.63
55	S 89°53'00" W	219.63
56	S 89°53'00" W	219.63
57	S 89°53'00" W	219.63
58	S 89°53'00" W	219.63
59	S 89°53'00" W	219.63
60	S 89°53'00" W	219.63
61	S 89°53'00" W	219.63
62	S 89°53'00" W	219.63
63	S 89°53'00" W	219.63
64	S 89°53'00" W	219.63
65	S 89°53'00" W	219.63
66	S 89°53'00" W	219.63
67	S 89°53'00" W	219.63
68	S 89°53'00" W	219.63
69	S 89°53'00" W	219.63
70	S 89°53'00" W	219.63
71	S 89°53'00" W	219.63
72	S 89°53'00" W	219.63
73	S 89°53'00" W	219.63
74	S 89°53'00" W	219.63
75	S 89°53'00" W	219.63
76	S 89°53'00" W	219.63
77	S 89°53'00" W	219.63
78	S 89°53'00" W	219.63
79	S 89°53'00" W	219.63
80	S 89°53'00" W	219.63
81	S 89°53'00" W	219.63
82	S 89°53'00" W	219.63
83	S 89°53'00" W	219.63
84	S 89°53'00" W	219.63
85	S 89°53'00" W	219.63
86	S 89°53'00" W	219.63
87	S 89°53'00" W	219.63
88	S 89°53'00" W	219.63
89	S 89°53'00" W	219.63
90	S 89°53'00" W	219.63

36th and MISSION  
 LOTS 1 AND 207, BLOCKS 1 AND 2 and COMMON AREA 2  
 Osborn, Patterson, Watbert and Associates  
 ENGINEERING SURVEYING PLANNING  
 opw  
 C 200-929  
 JOB NO. 7014-008  
 SHEET 143

ANNOTATED COPY



For Continuation See Sheet No 2

ENCHANTED HILLS, Lots 1-34 as recorded in EN 14 of Maps and Plats at RA 91

27	28	29	30
31	32	33	34

Lots Enfranchised

ENCHANTED HILLS, Block 3 as recorded in EN 14 of Maps and Plats at RA 91

HIRAM BANKS ACRES as recorded in EN 14 of Maps and Plats at RA 91

17	18	19	20
21	22	23	24

PIT QUITS TERRACE  
 Lots 1-16 as recorded in EN 14 of Maps and Plats at RA 91

1	2	3	4
5	6	7	8
9	10	11	12
13	14	15	16

**BELVEDERE ESTATES**

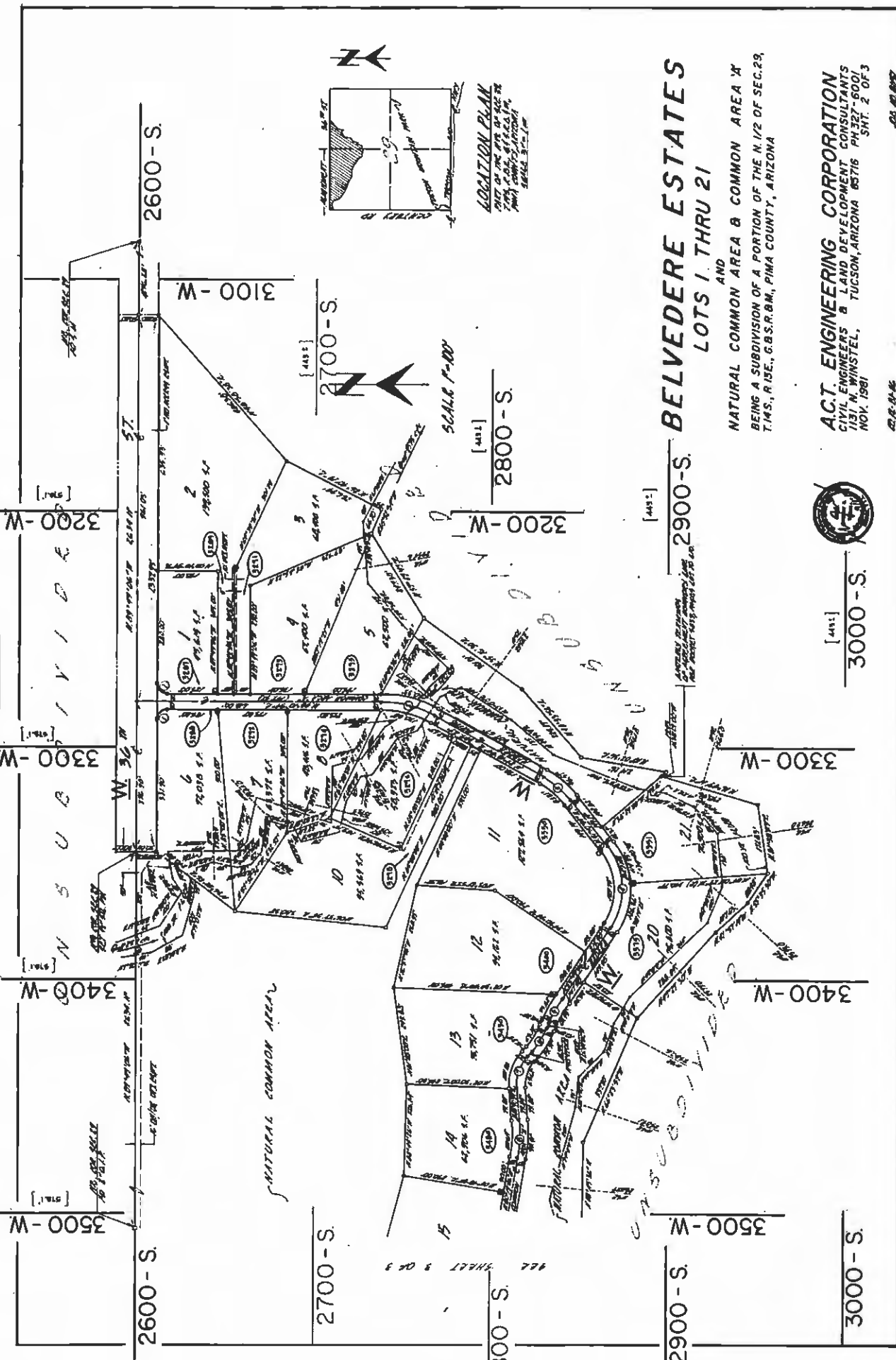
**MP 35045**

**RECORDED: JUNE 9, 1982**

**\*\*\* THE FOLLOWING PLAT IS AN ANNOTATED  
VERSION OF THE ORIGINAL DOCUMENT. IT HAS  
BEEN ALTERED BY PIMA COUNTY DEVELOPMENT  
SERVICES TO SHOW ADDITIONAL INFORMATION.  
ORIGINAL COPIES MAY BE OBTAINED FROM THE  
PIMA COUNTY RECORDER\*\*\***



ANNOTATED COPY



SCALE 1"=100'  
 [445']

# BELVEDERE ESTATES AND LOTS 1 THRU 21

NATURAL COMMON AREA & COMMON AREA 'X'  
 BEING A SUBDIVISION OF A PORTION OF THE N. 1/2 OF SEC. 29,  
 T. 14S., R. 15E., G.B.S.R.B.M., PIMA COUNTY, ARIZONA



ACT. ENGINEERING CORPORATION  
 CIVIL ENGINEERS & LAND DEVELOPMENT CONSULTANTS  
 1131 N. WINSTEL, TUCSON, ARIZONA 85716 PH 327-6001  
 NOV. 1981

02-10-81-45

[445']  
 3000 - S.

3500 - S.

2800 - S.

2900 - S.

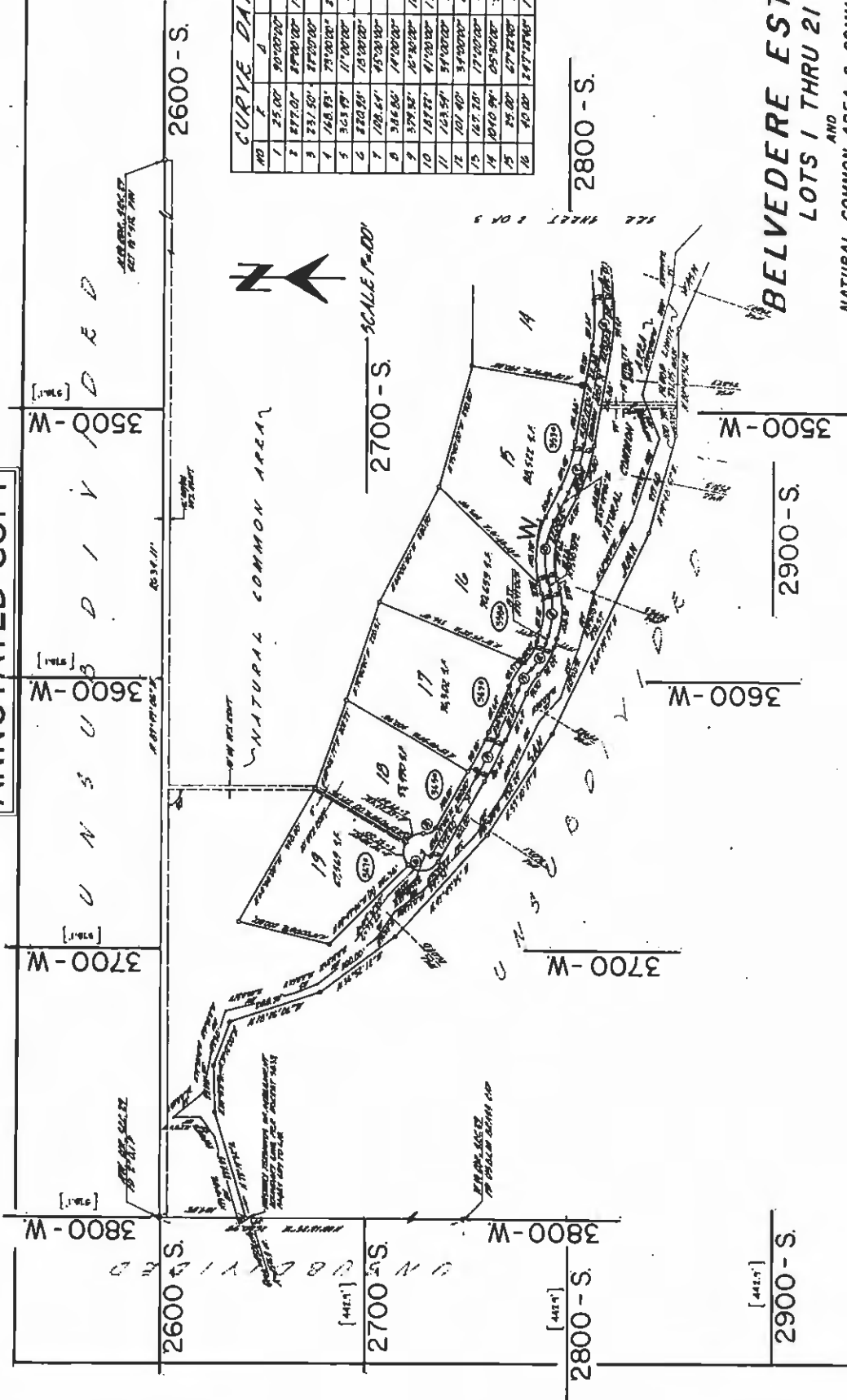
2700 - S.

2600 - S.

666 SHEET 3 OF 3



ANNOTATED COPY



CURVE DATA TABLE

NO	R	D	L	C	T
1	25.00'	90°00'00"	39.27'	95.36'	85.00'
2	277.00'	87°00'00"	140.82'	138.78'	71.64'
3	23.50'	87°30'00"	60.80'	80.94'	95.00'
4	128.83'	73°00'00"	215.23'	200.97'	115.00'
5	325.89'	11°00'00"	61.97'	628.61'	35.00'
6	220.55'	70°00'00"	89.48'	87.41'	35.00'
7	128.45'	85°30'00"	85.33'	83.41'	45.00'
8	346.86'	17°00'00"	94.93'	94.93'	97.50'
9	379.36'	16°30'00"	102.00'	102.00'	108.00'
10	187.88'	41°00'00"	195.97'	131.73'	70.00'
11	123.54'	34°00'00"	87.05'	83.63'	50.00'
12	101.40'	34°00'00"	60.17'	59.29'	31.00'
13	167.20'	17°00'00"	85.65'	84.89'	34.00'
14	1010.94'	05°30'00"	99.89'	97.63'	50.00'
15	25.00'	27°00'00"	39.40'	27.79'	16.43'
16	40.00'	24°00'00"	178.70'	166.50'	60.00'

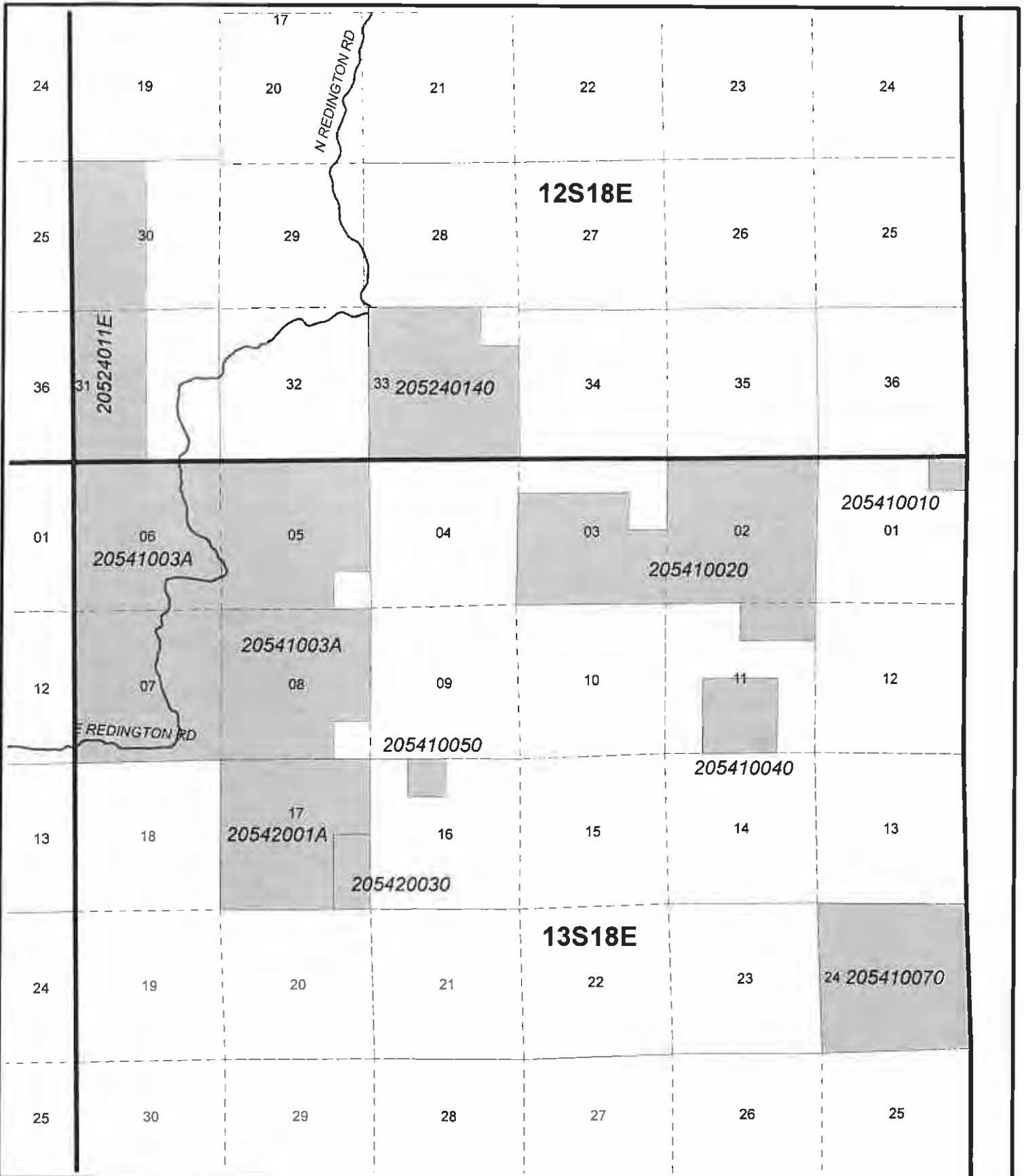
**BELVEDERE ESTATES**  
 AND  
 LOTS 1 THRU 21

NATURAL COMMON AREA & COMMON AREA 'X'  
 BEING A SUBDIVISION OF A PORTION OF THE N. 1/2 OF SEC. 29,  
 T.14S., R.13E., G.B.S.R.B.M., PIMA COUNTY, ARIZONA.



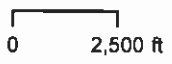
**A.C.T. ENGINEERING CORPORATION**  
 CIVIL ENGINEERS & LAND DEVELOPMENT CONSULTANTS  
 1131 N. WINSTEL, TUCSON, ARIZONA 85716  
 NOV/1981

2018-01-06

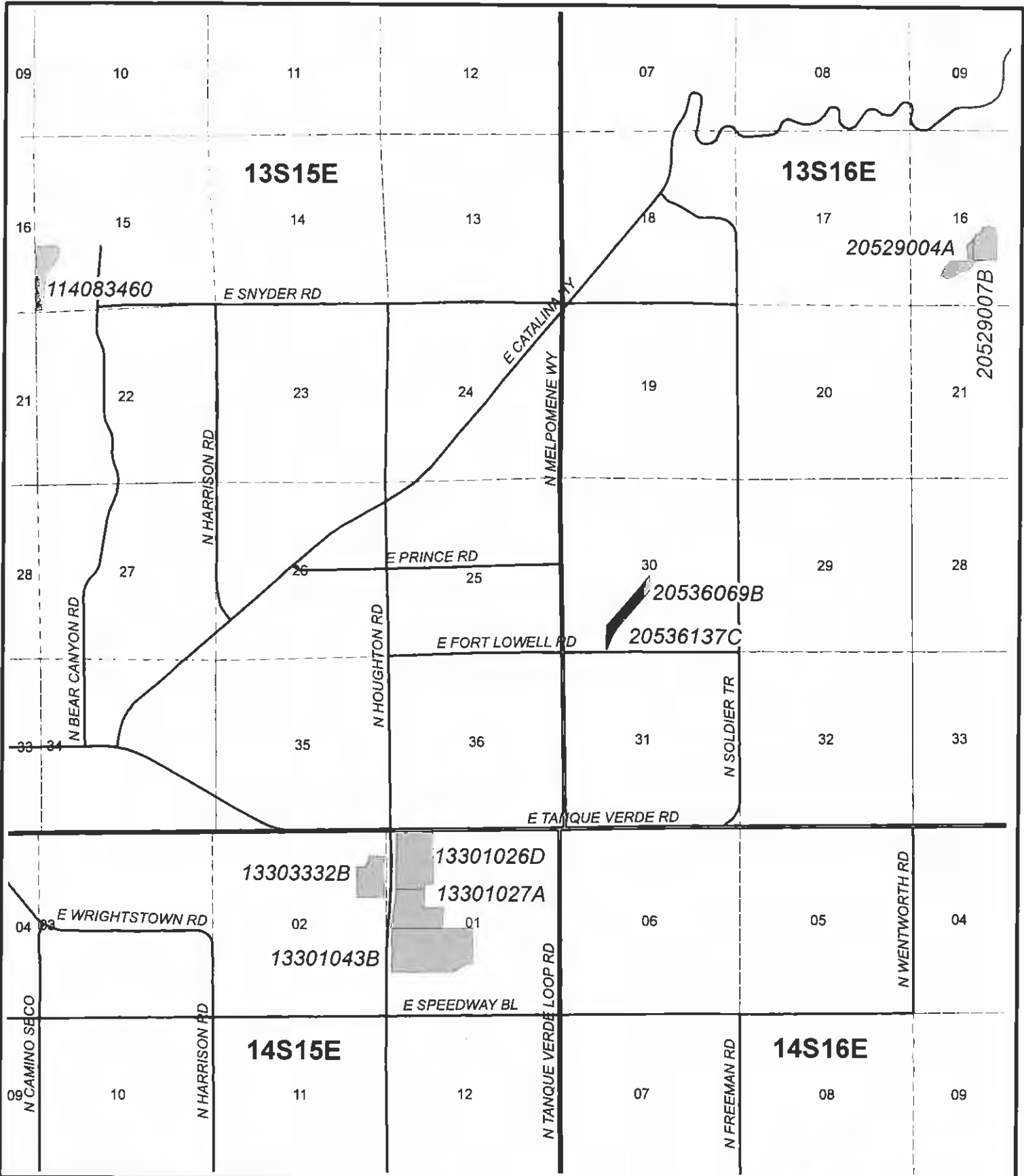


**MSCP**  
**Restrictive Covenants:**  
**Pima County Owner & Grantor;**  
**FCD Receives Covenant**

**EXHIBIT C**

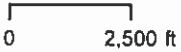



A7 Ranch (2)

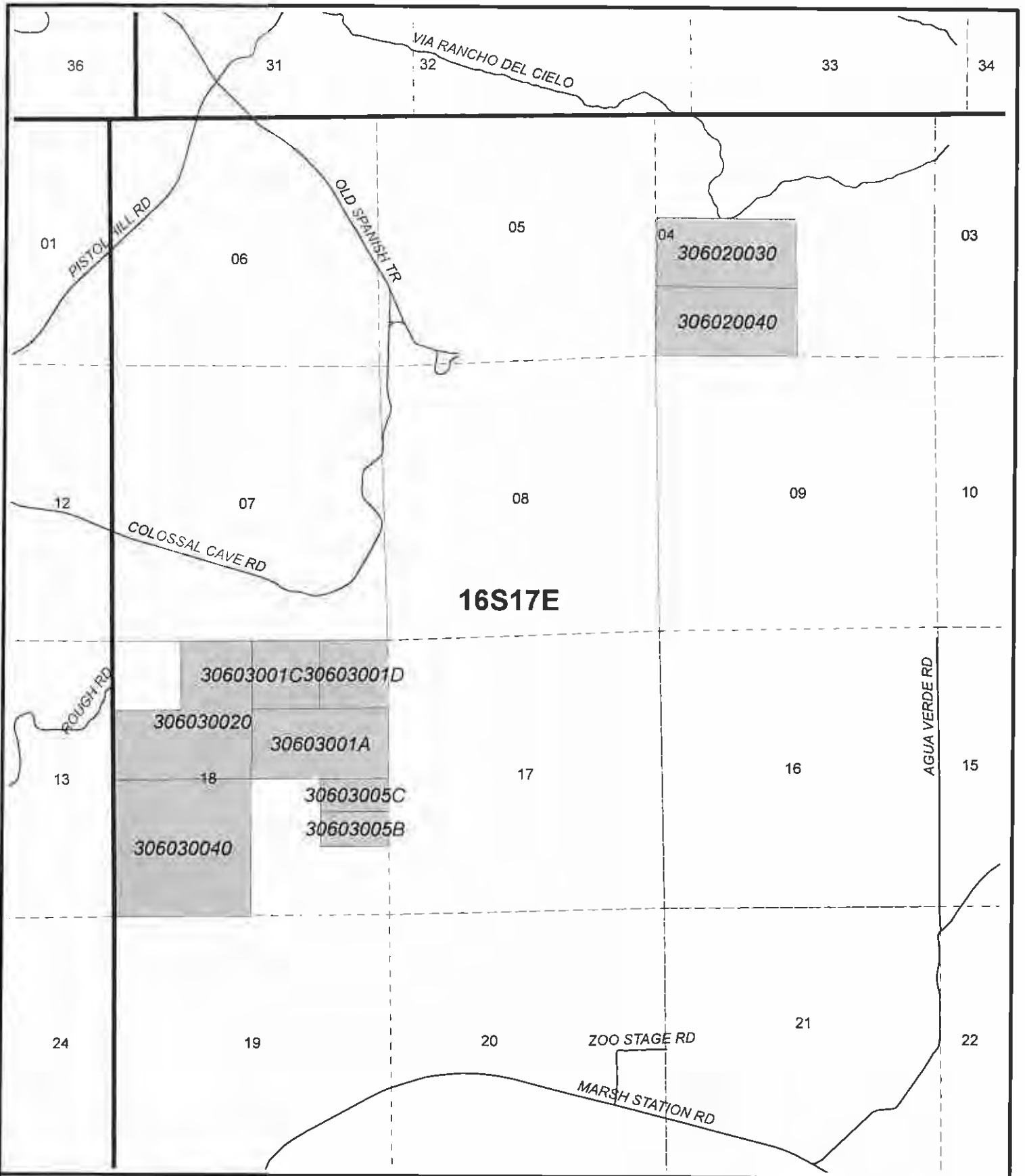


**MSCP**  
**Restrictive Covenants:**  
**Pima County Owner & Grantor;**  
**FCD Receives Covenant**

# EXHIBIT C



  
 Agua Caliente Creek (3)  
 Bear Creek Ranch (10)  
 Doucette (23), San Domingo (46)  
 Tanque Verde & Houghton (55)  
 Terra Rancho Grande (56)



**MSCP**  
**Restrictive Covenants:**  
**Pima County Owner & Grantor;**  
**FCD Receives Covenant**

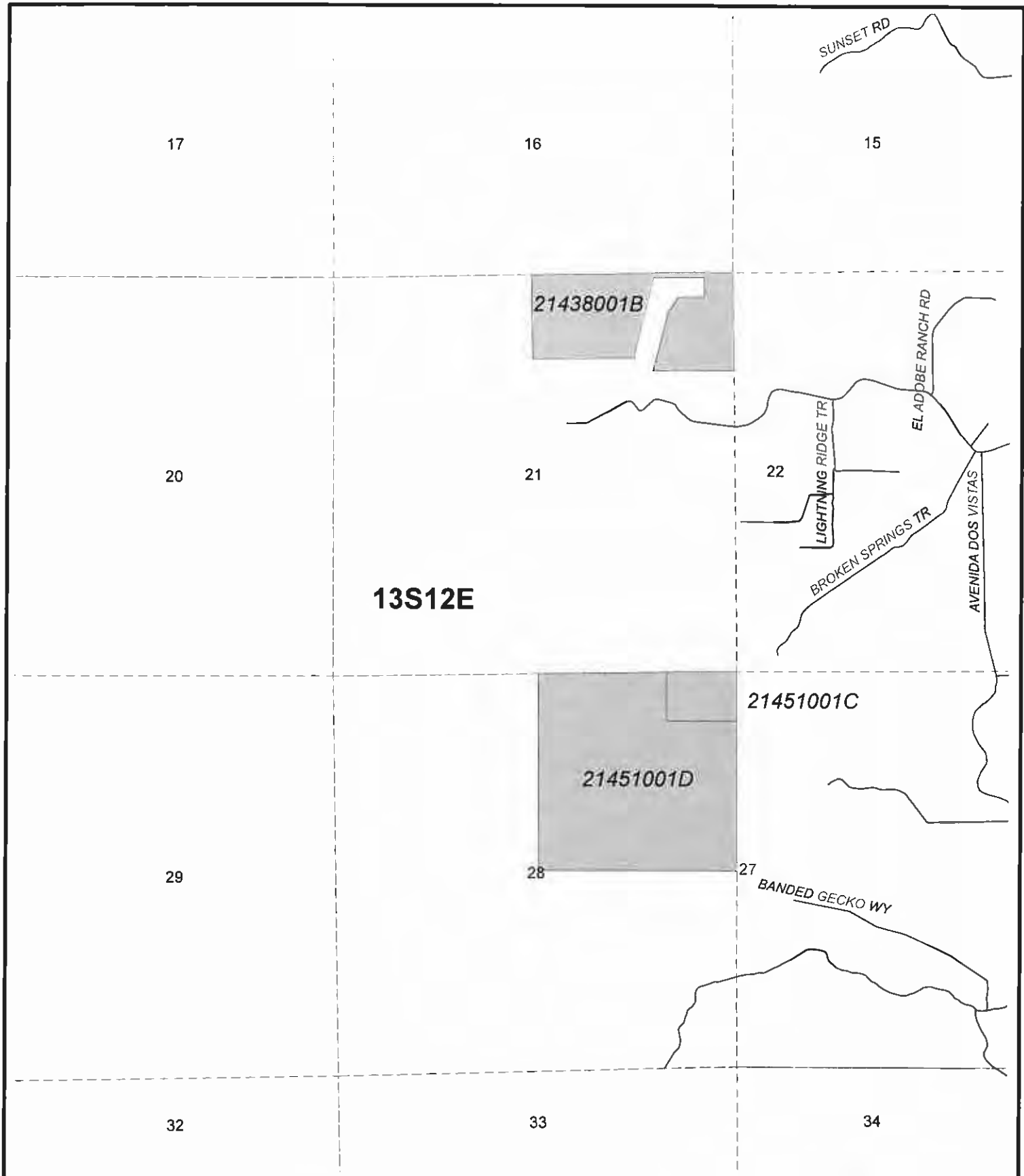
**EXHIBIT C**



0 1,500 ft

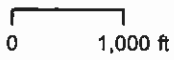


Agua Verde Creek (4)  
 Colossal Cave Mountain Park (18)

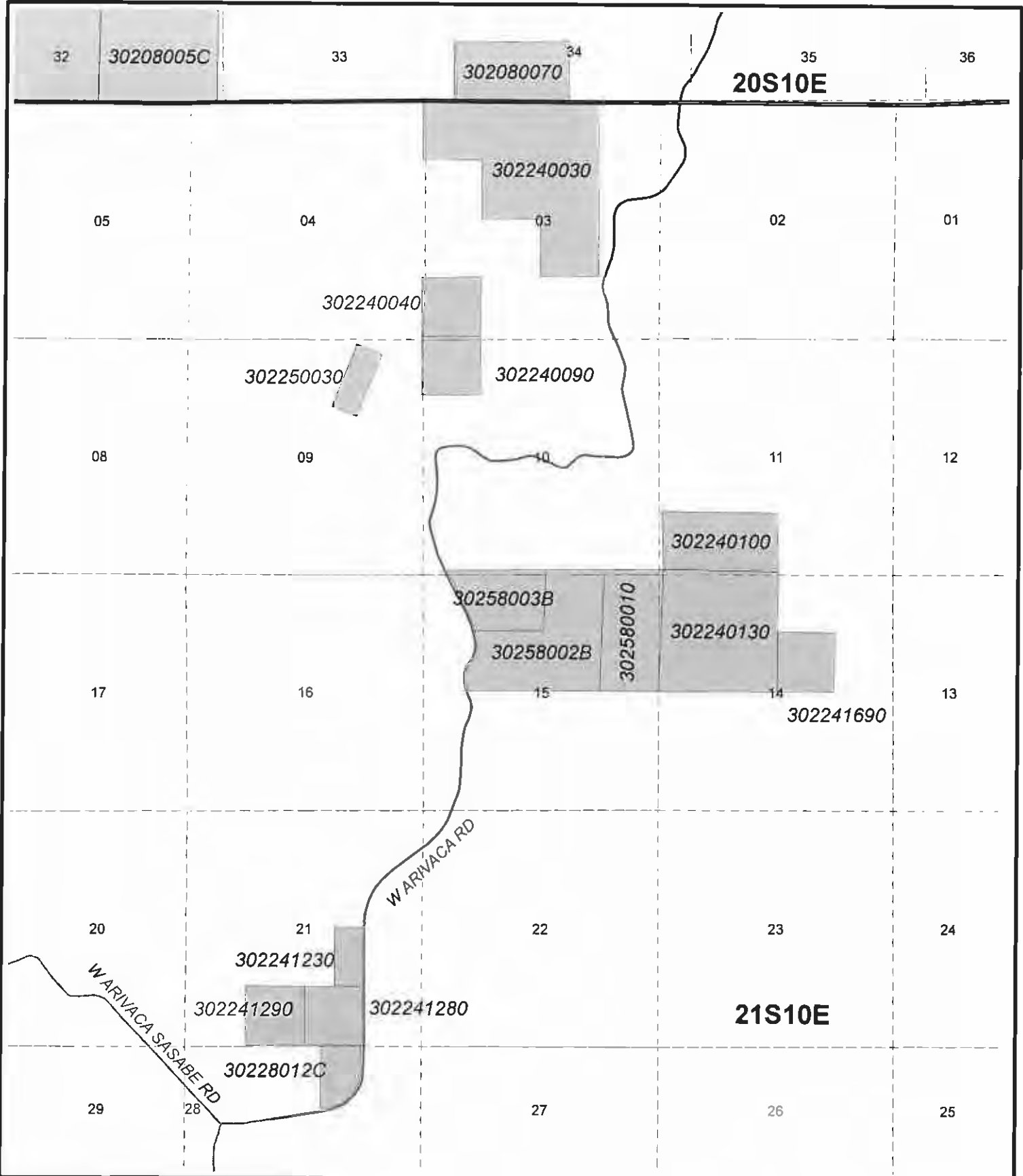


**MSCP**  
**Restrictive Covenants:**  
**Pima County Owner & Grantor;**  
**FCD Receives Covenant**

**EXHIBIT C**



Andrada (5)  
 Malcolmson Donation (39)



**MSCP**  
**Restrictive Covenants:**  
**Pima County Owner & Grantor;**  
**FCD Receives Covenant**

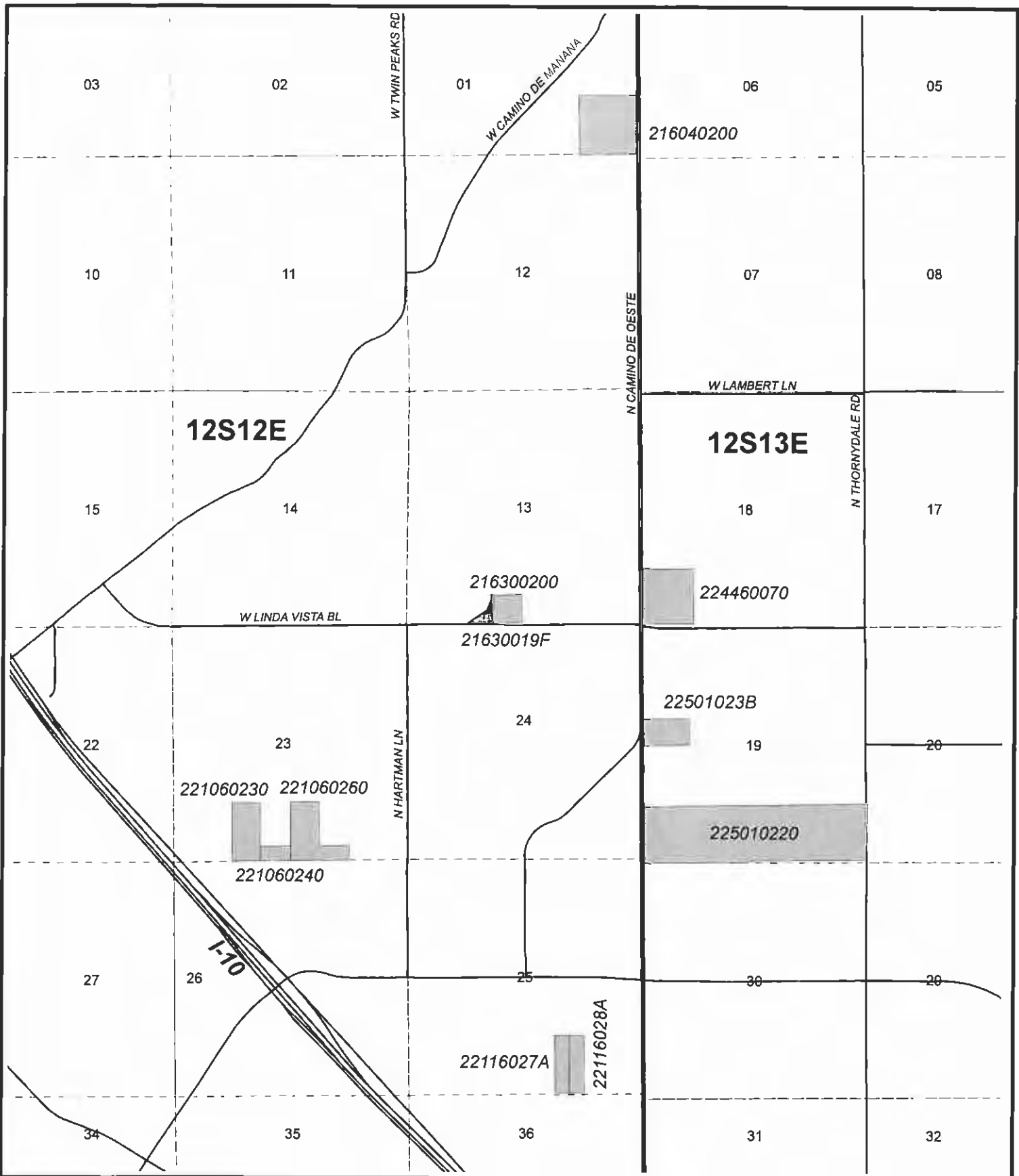
# EXHIBIT C



0 2,000 ft



Arivaca Open Space (6)  
 Rancho Seco (44)



**MSCP**  
**Restrictive Covenants:**  
**Pima County Owner & Grantor;**  
**FCD Receives Covenant**

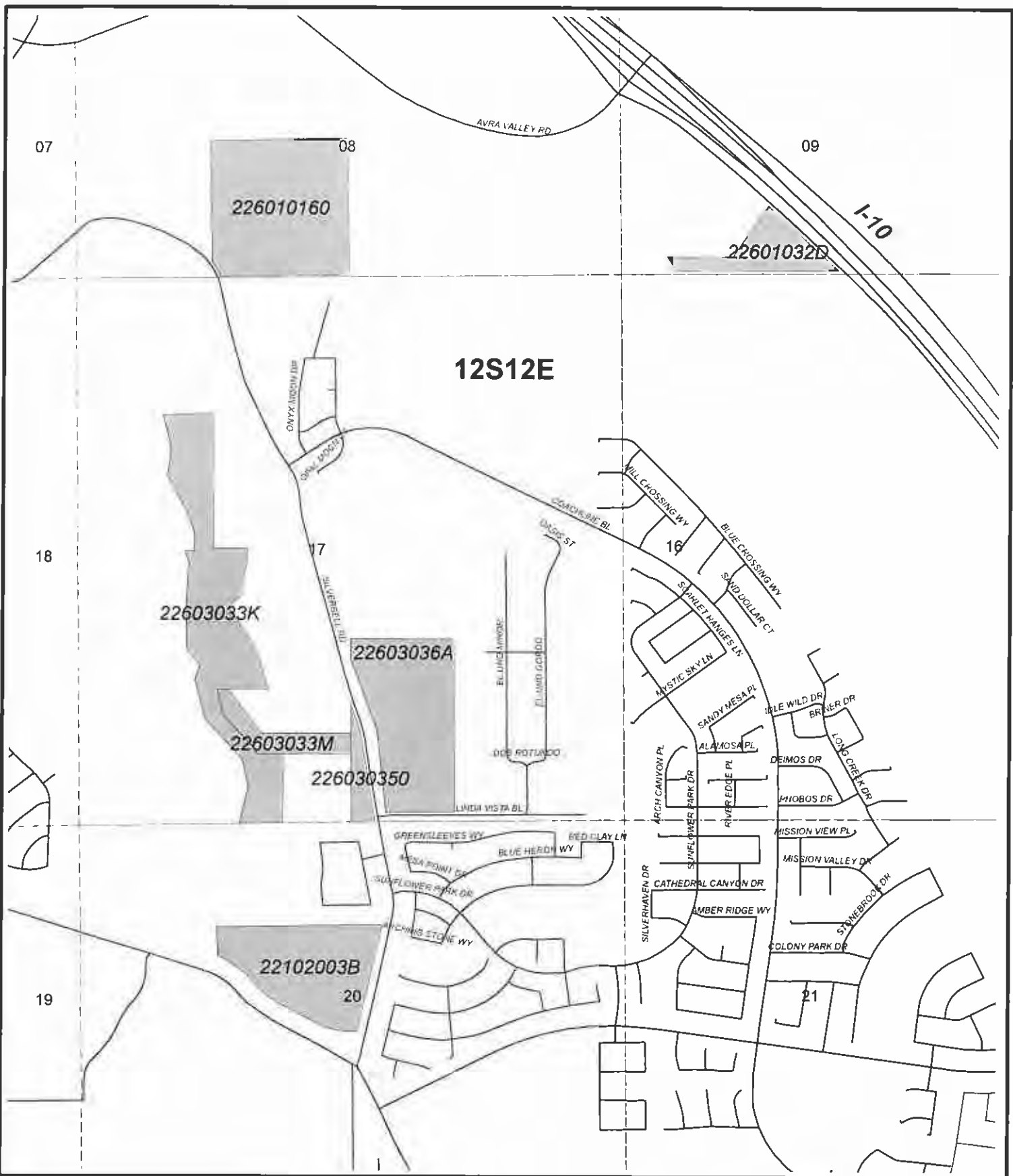
**EXHIBIT C**



Arthur Pack OS (7)  
 Cortaro-Hartman (19)  
 Tang (29), Linda Vista (35)  
 Reid (45), Stevens (53)  
 DOT Section 7 (63)



No leased property is encumbered.



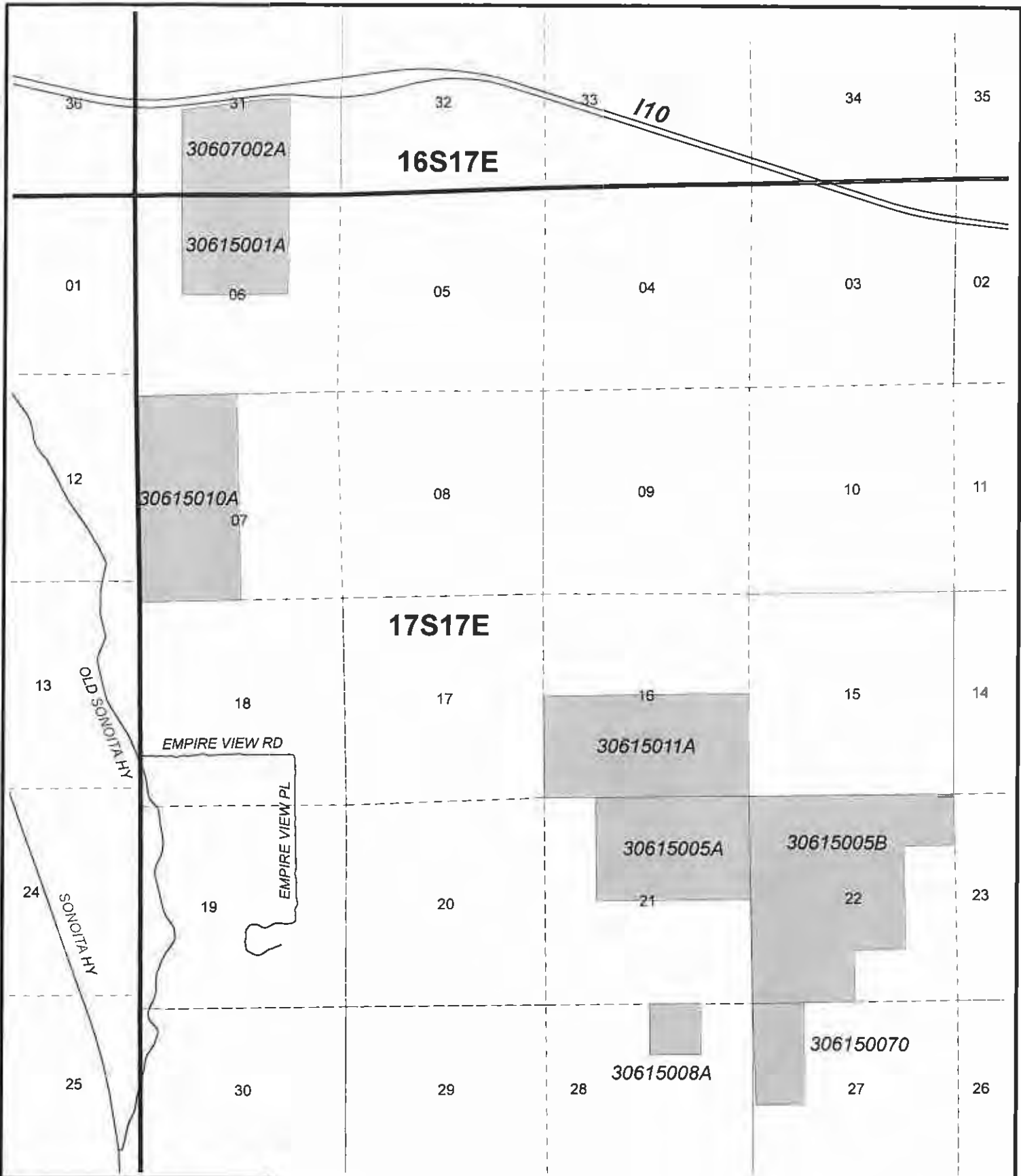
**MSCP**  
**Restrictive Covenants:**  
**Pima County Owner & Grantor;**  
**FCD Receives Covenant**

# EXHIBIT C



 Avra I-10 Wildlife Corridor (8)  
 Los Morteros (36)





**MSCP**  
**Restrictive Covenants:**  
**Pima County Owner & Grantor;**  
**FCD Receives Covenant**

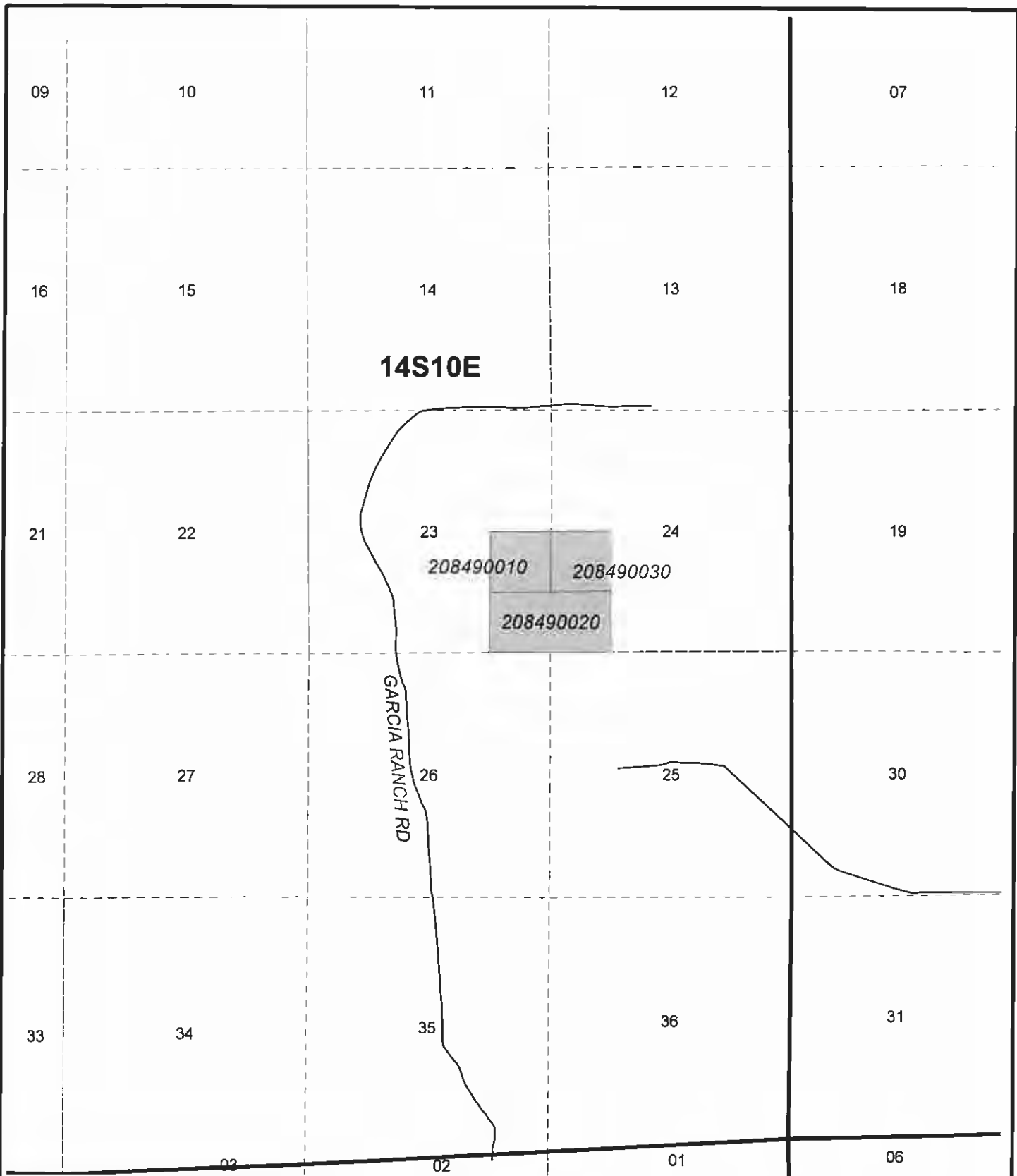
**EXHIBIT C**



0 2,000 ft



Bar V Ranch (9)



**MSCP**  
**Restrictive Covenants:**  
**Pima County Owner & Grantor;**  
**FCD Receives Covenant**

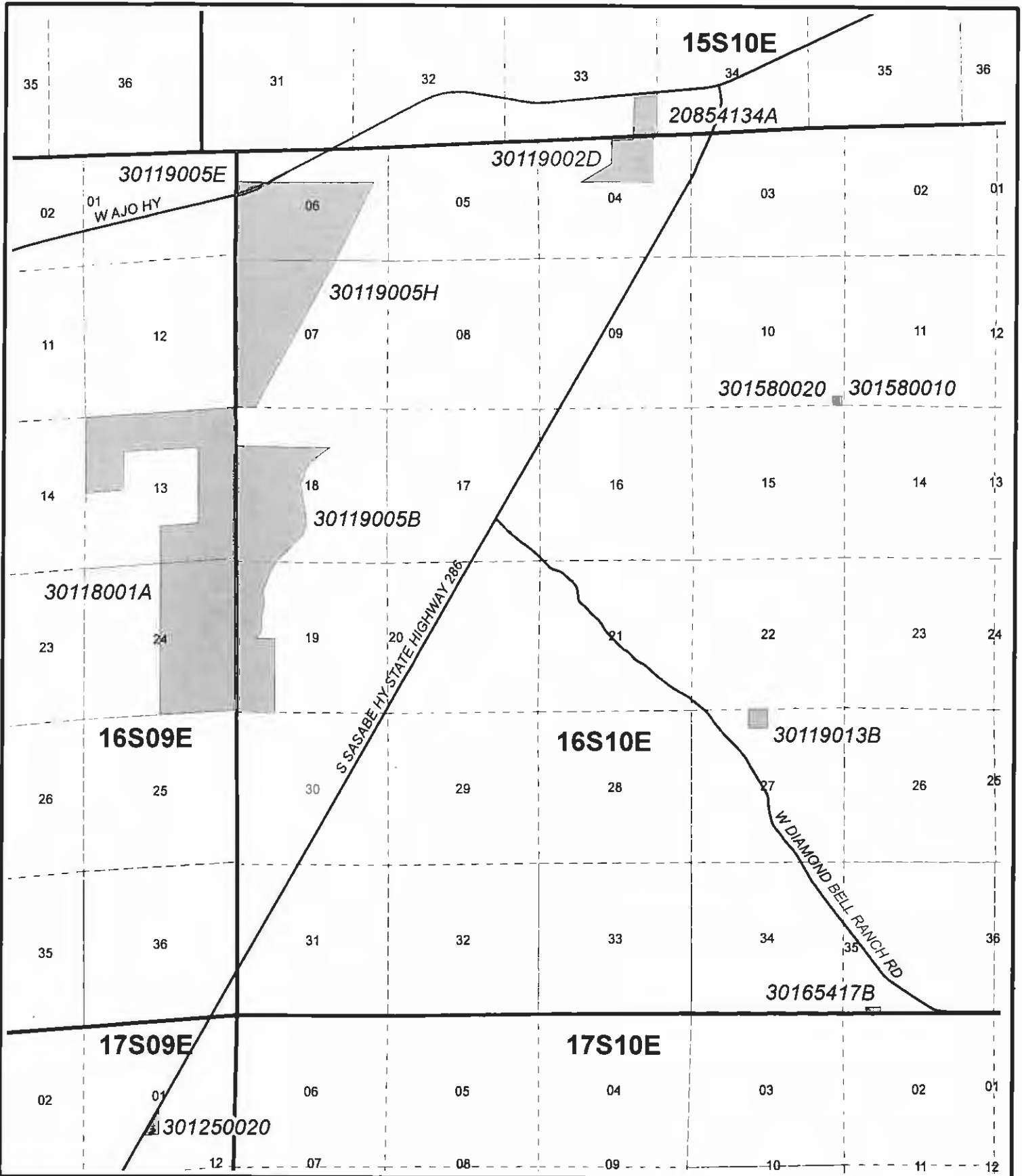
**EXHIBIT C**



0 1,500 ft



Bee (11)




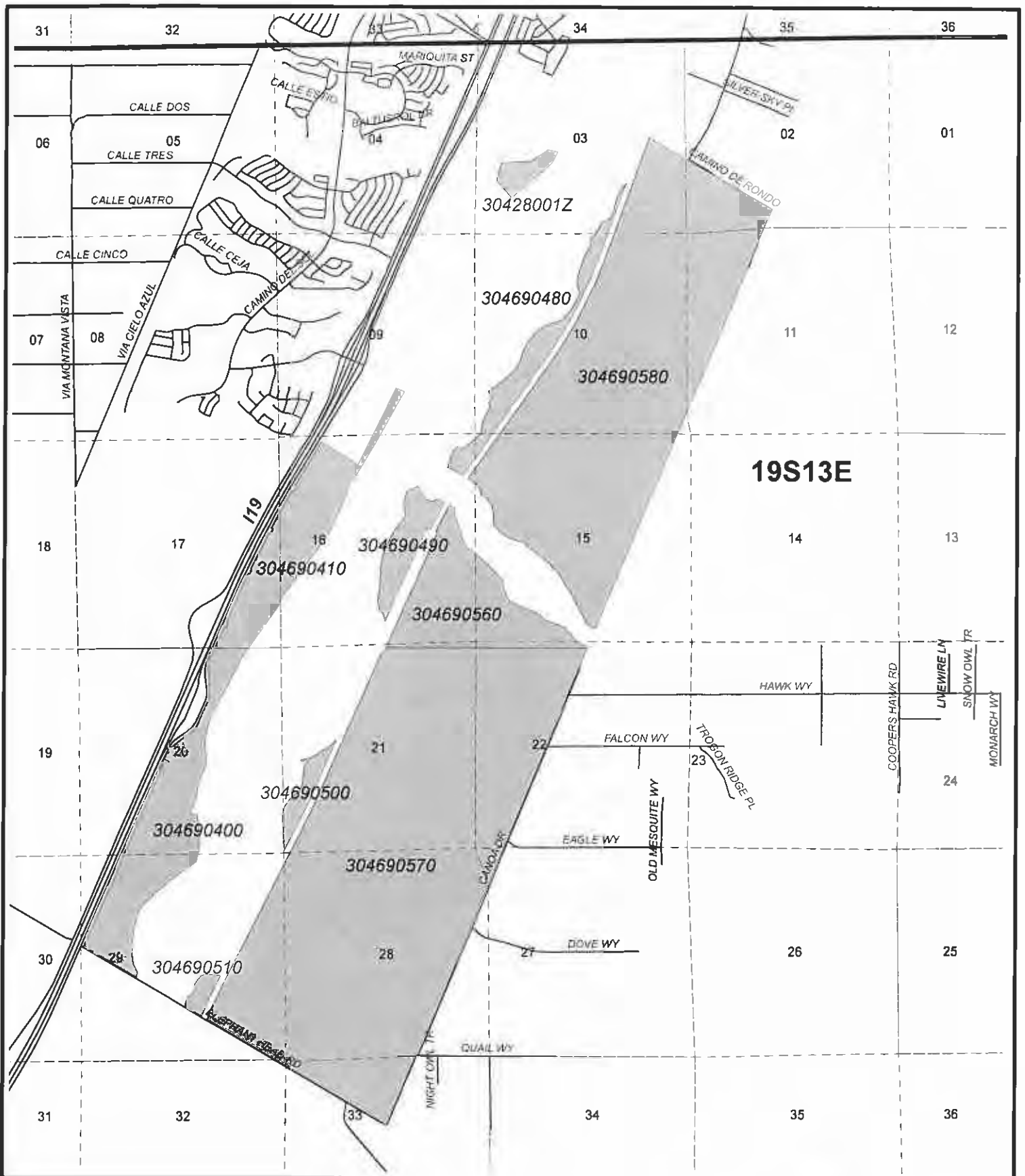
**MSCP**  
**Restrictive Covenants:**  
**Pima County Owner & Grantor;**  
**FCD Receives Covenant**

# EXHIBIT C



0 2,000 ft

  
 Buckelew (12)  
 Diamond Bell Ranch (21)  
 King 98 Ranch (33)



**MSCP**  
**Restrictive Covenants:**  
**Pima County Owner & Grantor;**  
**FCD Receives Covenant**

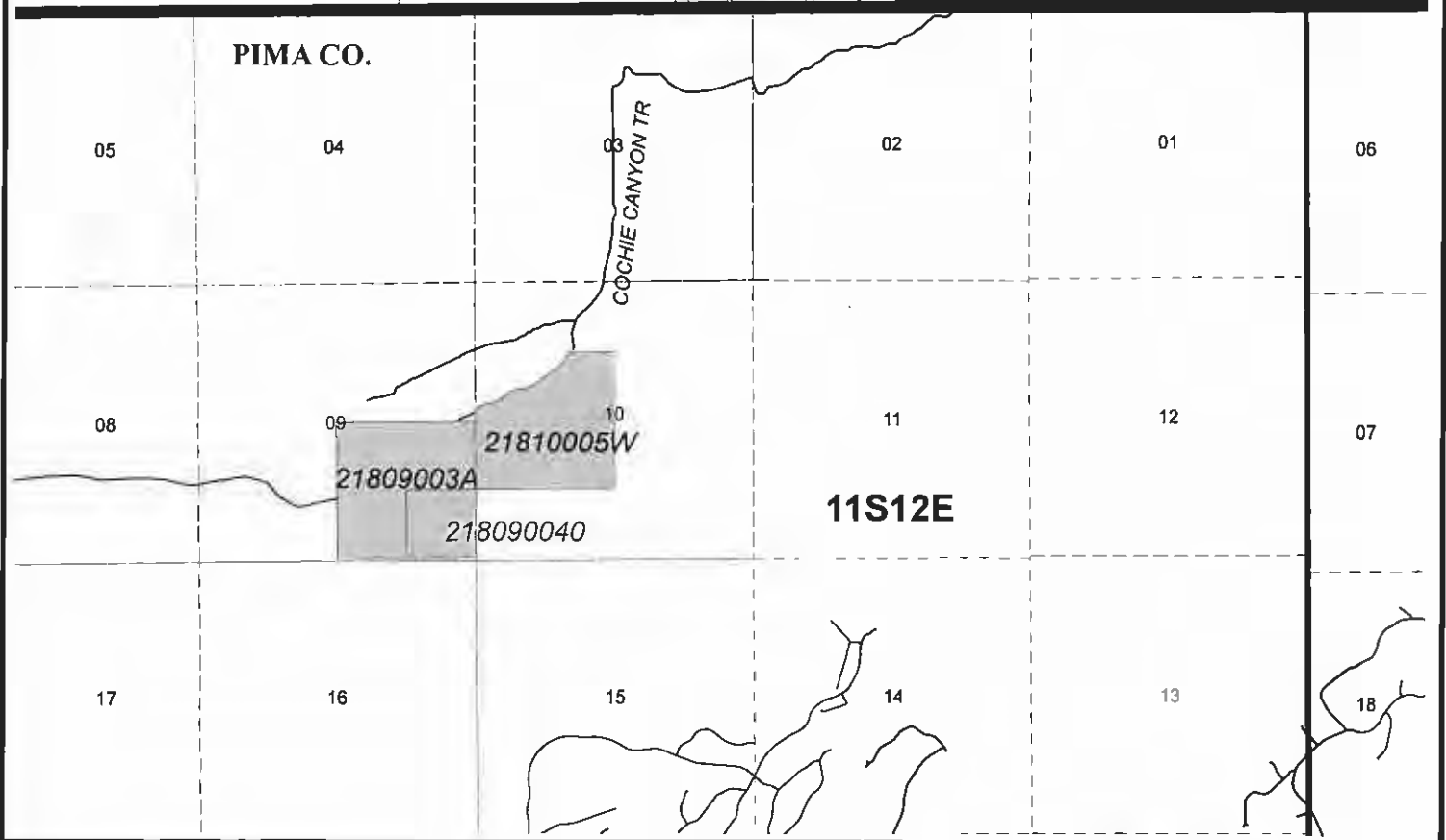
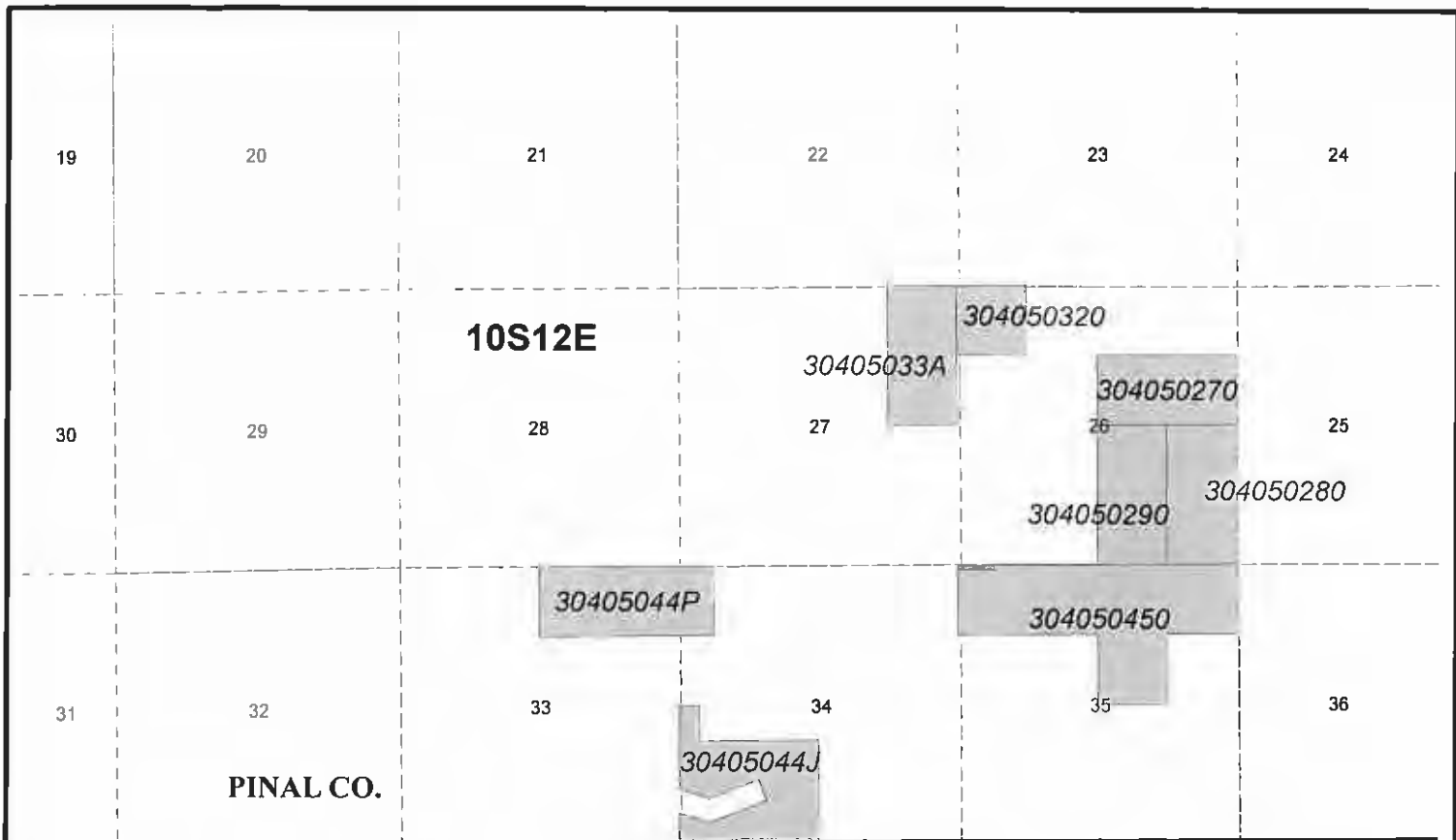
# EXHIBIT C



0 2,000 ft



Canoa Ranch (13)



**MSCP**  
**Restrictive Covenants:**  
**Pima County Owner & Grantor;**  
**FCD Receives Covenant**

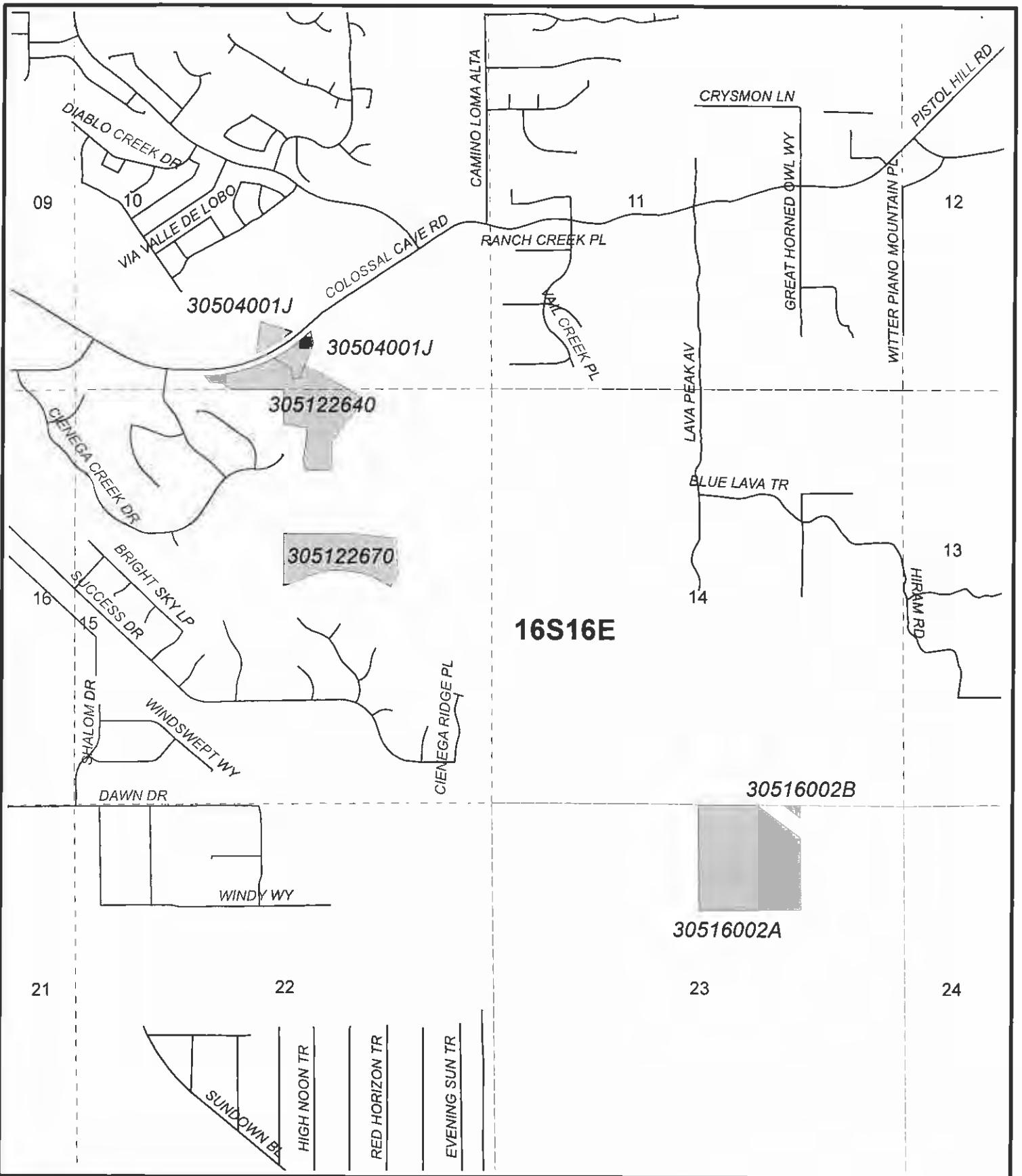
**EXHIBIT C**



0 2,000 ft



Carpenter Ranch (14)  
 Cochie Canyon (17)  
 DYBVIG (24)



**MSCP**  
**Restrictive Covenants:**  
**Pima County Owner & Grantor;**  
**FCD Receives Covenant**

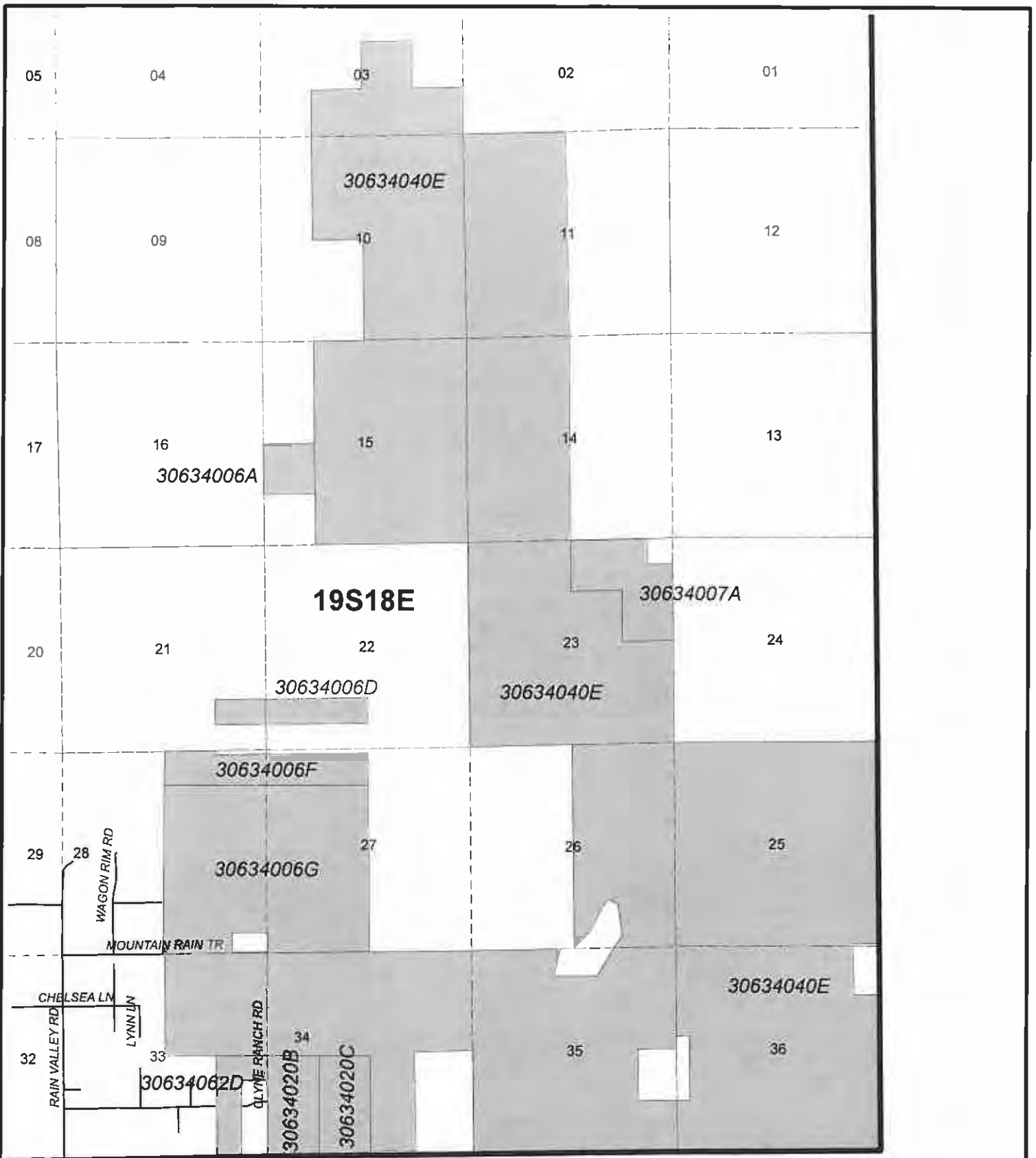
# EXHIBIT C



0 1,000 ft



Cienega Creek Natural Preserve (15)



**MSCP**  
**Restrictive Covenants:**  
**Pima County Owner & Grantor;**  
**FCD Receives Covenant**

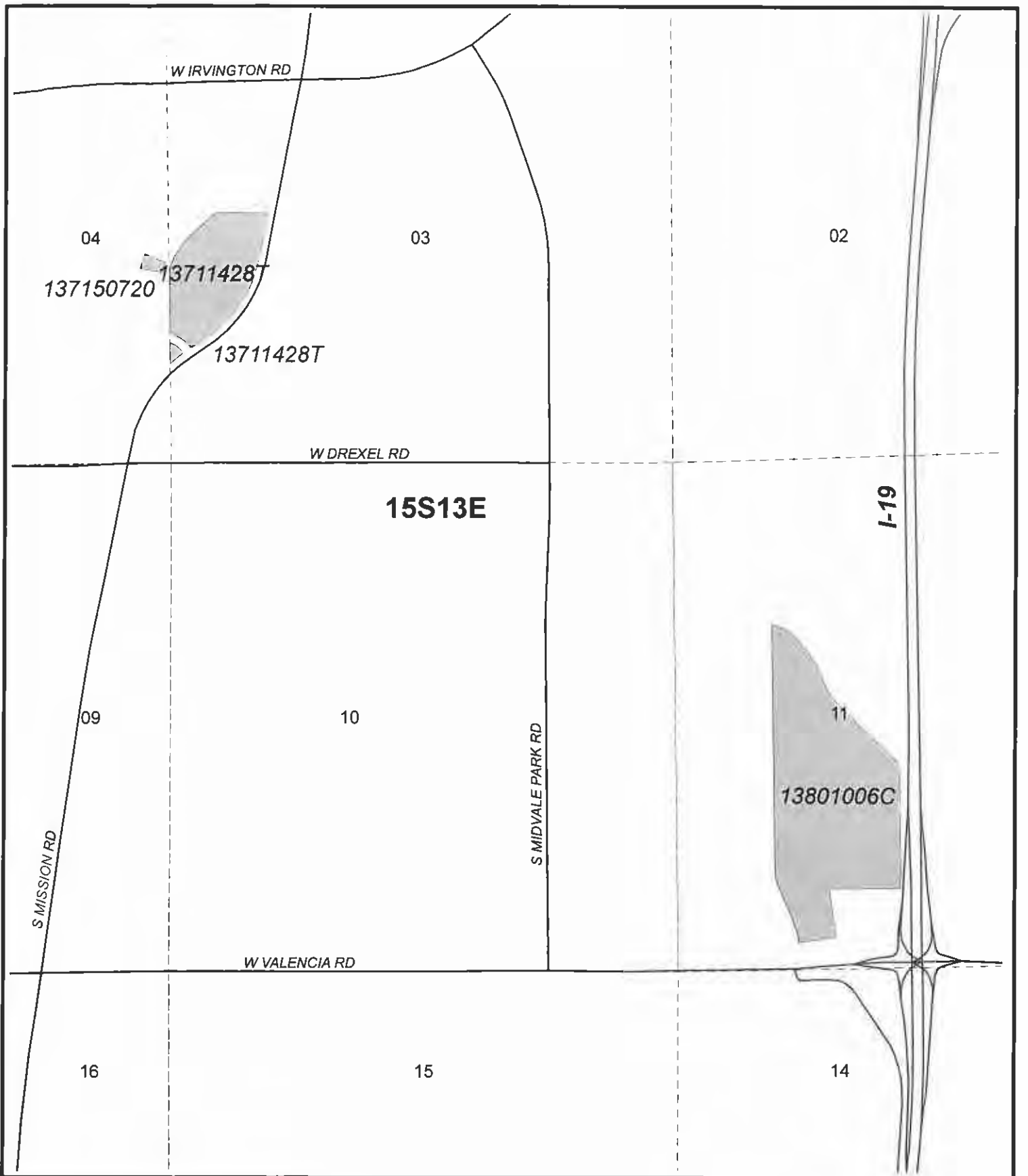
**EXHIBIT C**



0 2,000 ft



Clyne Ranch (16)  
 Sands Ranch (47)



**MSCP**  
**Restrictive Covenants:**  
**Pima County Owner & Grantor;**  
**FCD Receives Covenant**

**EXHIBIT C**

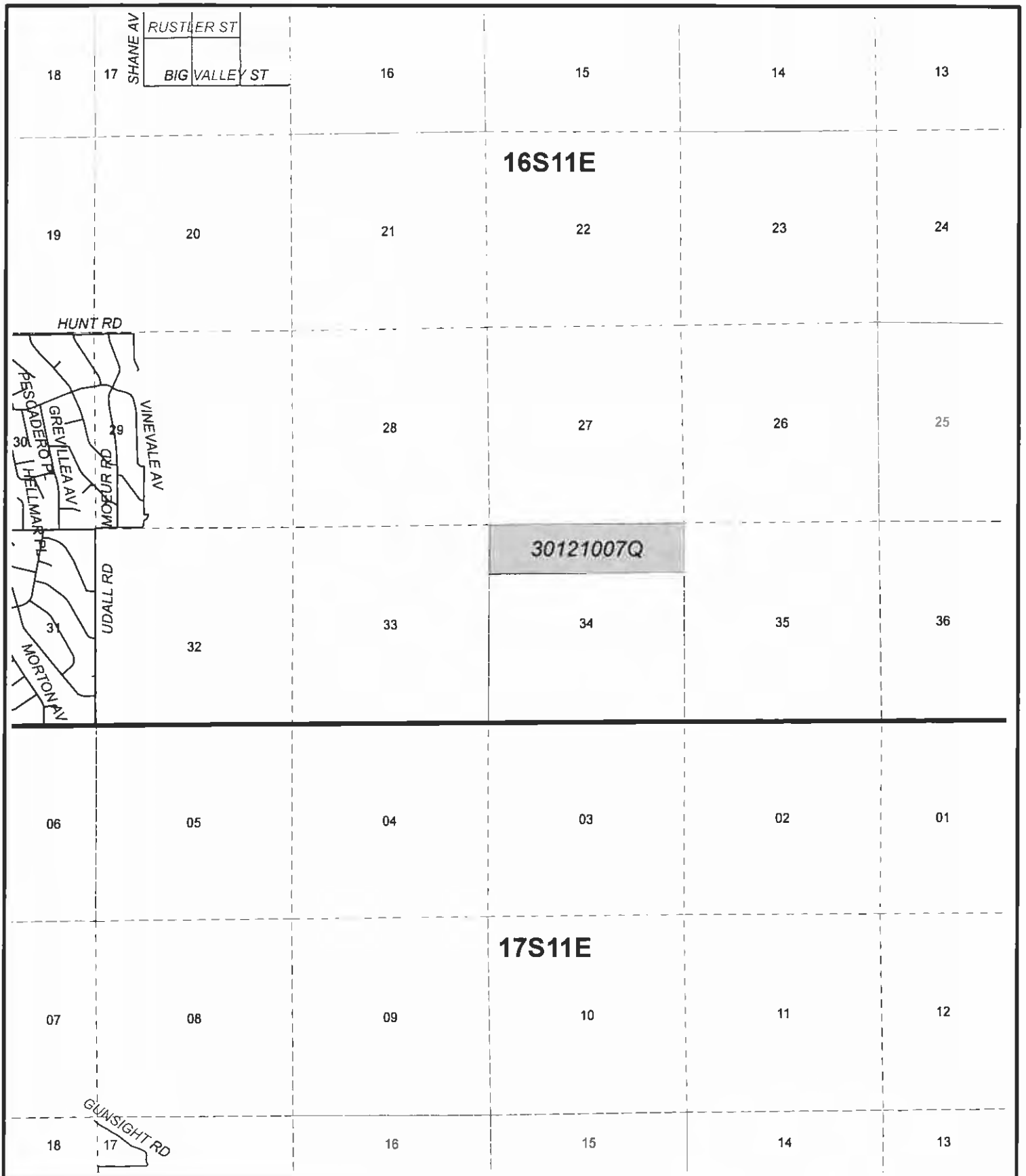


0 500 ft



Dakota Wash (20)  
 Valencia Archaeological Preserve (61)





**MSCP**  
**Restrictive Covenants:**  
**Pima County Owner & Grantor;**  
**FCD Receives Covenant**

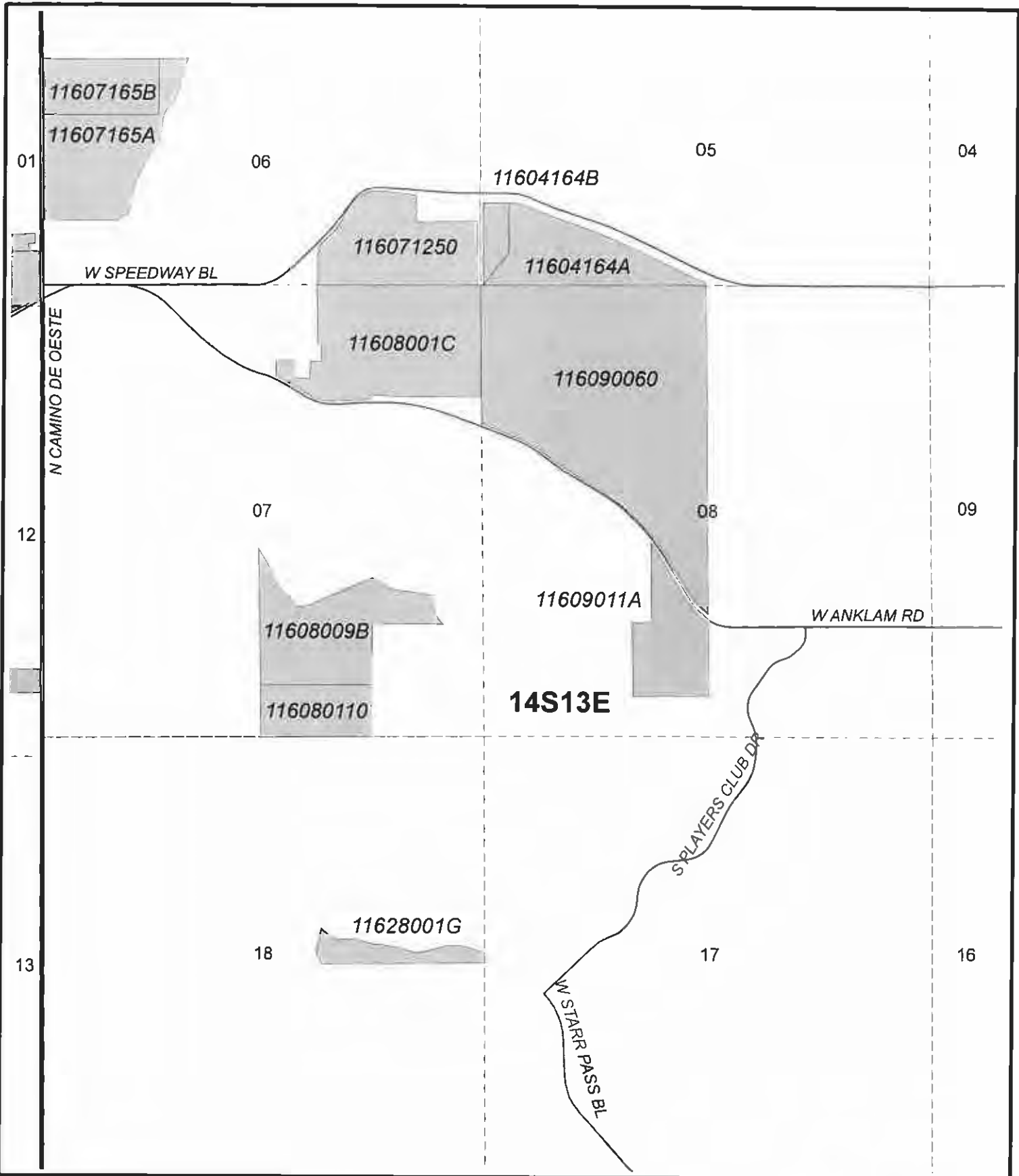
**EXHIBIT C**



0 2,000 ft



Diamond Bell Ranch (21)



**MSCP**  
**Restrictive Covenants:**  
**Pima County Owner & Grantor;**  
**FCD Receives Covenant**

# EXHIBIT C



0 1,000 ft



Dos Picos(22)  
 Painted Hills (43)  
 Tucson Mountain Park (58)  
 Tucson Mountain Park  
 Biological Corridor (59)

12

07

08

**19S14E**

13

18

17

30447001E

30447001F

304480030

30448002B

30448002A

30448006C

30448006B

24

19

20

25

30

29

**MSCP**  
**Restrictive Covenants:**  
**Pima County Owner & Grantor;**  
**FCD Receives Covenant**

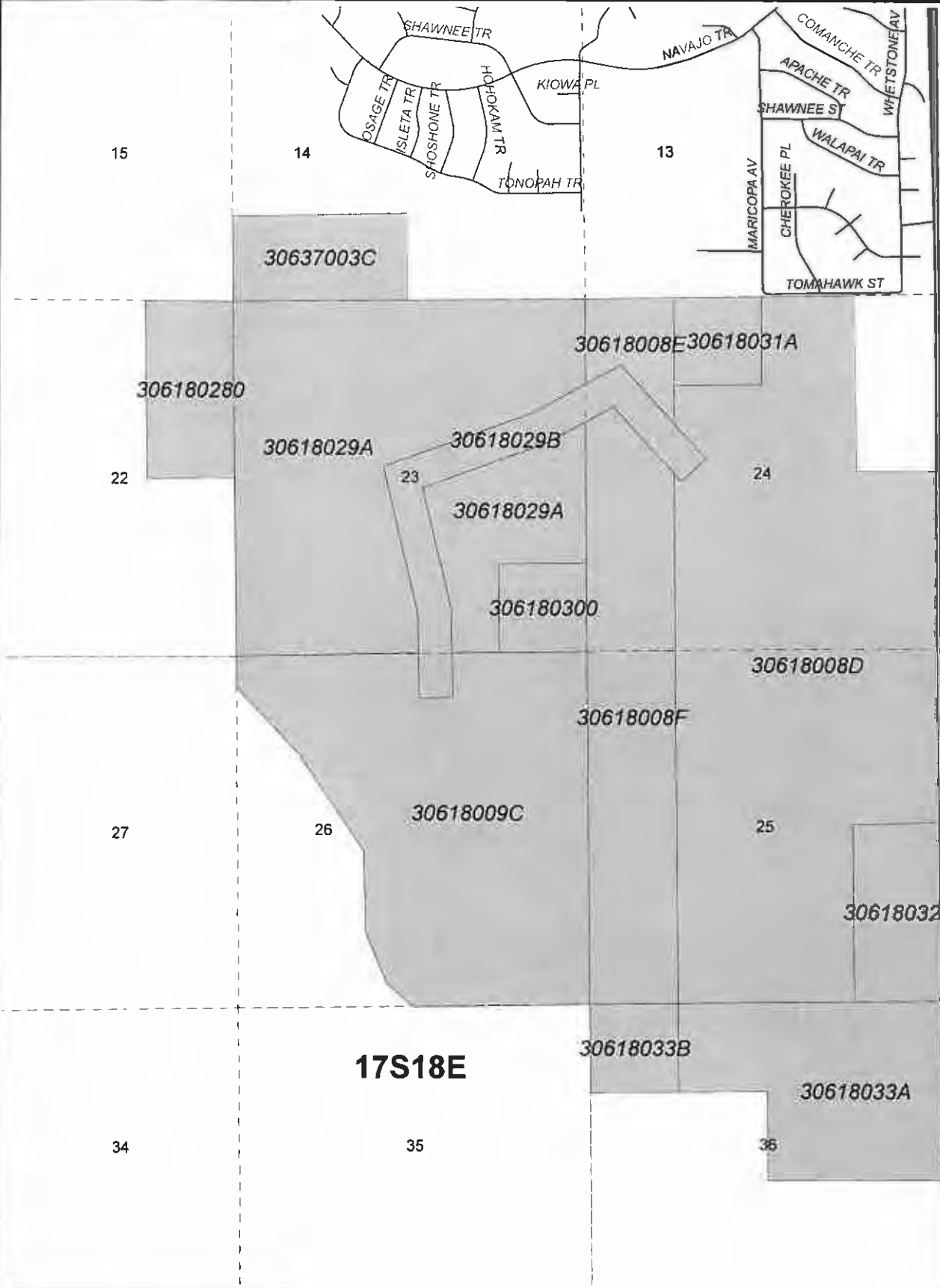
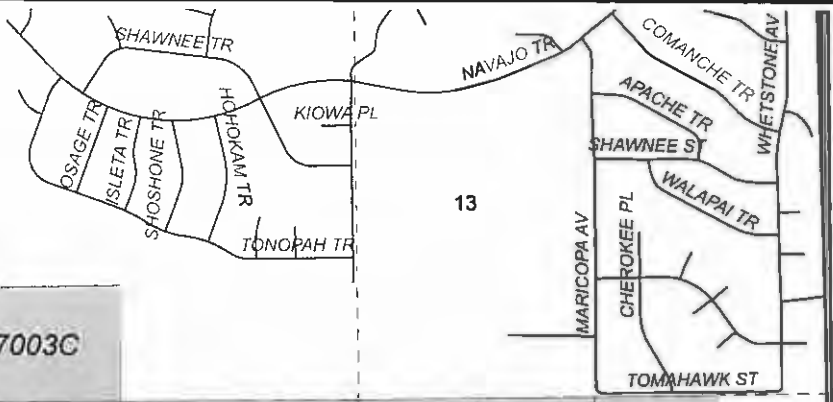
# EXHIBIT C



0 1,000 ft



Elephant Head (25), Easley (26)  
Kreutz (27), South Wilmot LLC (50)



**17S18E**

**MSCP**  
**Restrictive Covenants:**  
**Pima County Owner & Grantor;**  
**FCD Receives Covenant**

**EXHIBIT C**



Empirita Ranch (28)

13S12E

34

35

36

31

03

02

01

11607165B  
06

11607165A

21201002B

21206094A  
21206094B  
21206094C  
21206094D  
21206094E

21204003E

21204003N

21201002H

21211015A

212100030

212110220

212110230

07

10

11

12

W GATES PASS RD

212110290

212110370

212110300

21211049B

212110310

21211049A

212110350

212110330

212110360

15

14

13

18

14S12E

14S13E

22

23

24

19

**MSCP**  
**Restrictive Covenants:**  
**Pima County Owner & Grantor;**  
**FCD Receives Covenant**

**EXHIBIT C**



0 1,500 ft



Holden Donation (30)  
Tucson Mountain Park (58)