

SONORAN DESERT CONSERVATION PLAN

BIOLOGICAL CORRIDORS AND CRITICAL HABITAT

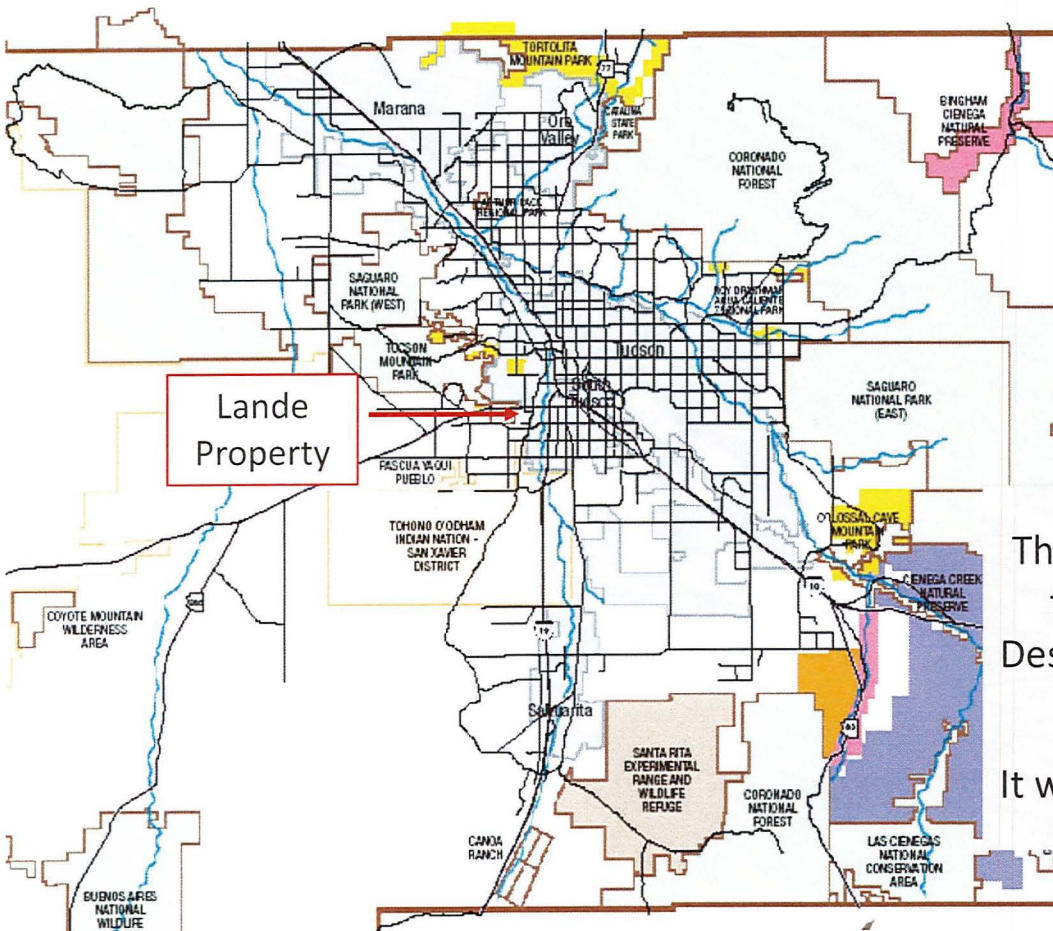
The work on the biological corridors and critical habitat element of the Sonoran Desert Conservation Plan revealed that biology is the basis for all other elements. The strong interconnections of all five elements is critical in forming a viable land management plan that ensures continuing biodiversity for Pima County.

LEGEND

- Important Riparian Areas
- Biological Core Areas
- Multiple Use Areas
- Wildlife Corridors

The Lande property occurs in a location recognized during development of the Sonoran Desert Conservation Plan for its importance in maintaining habitat connectivity and wildlife corridors.

It is within a Multiple Use Management Area



SONORAN DESERT CONSERVATION PLAN

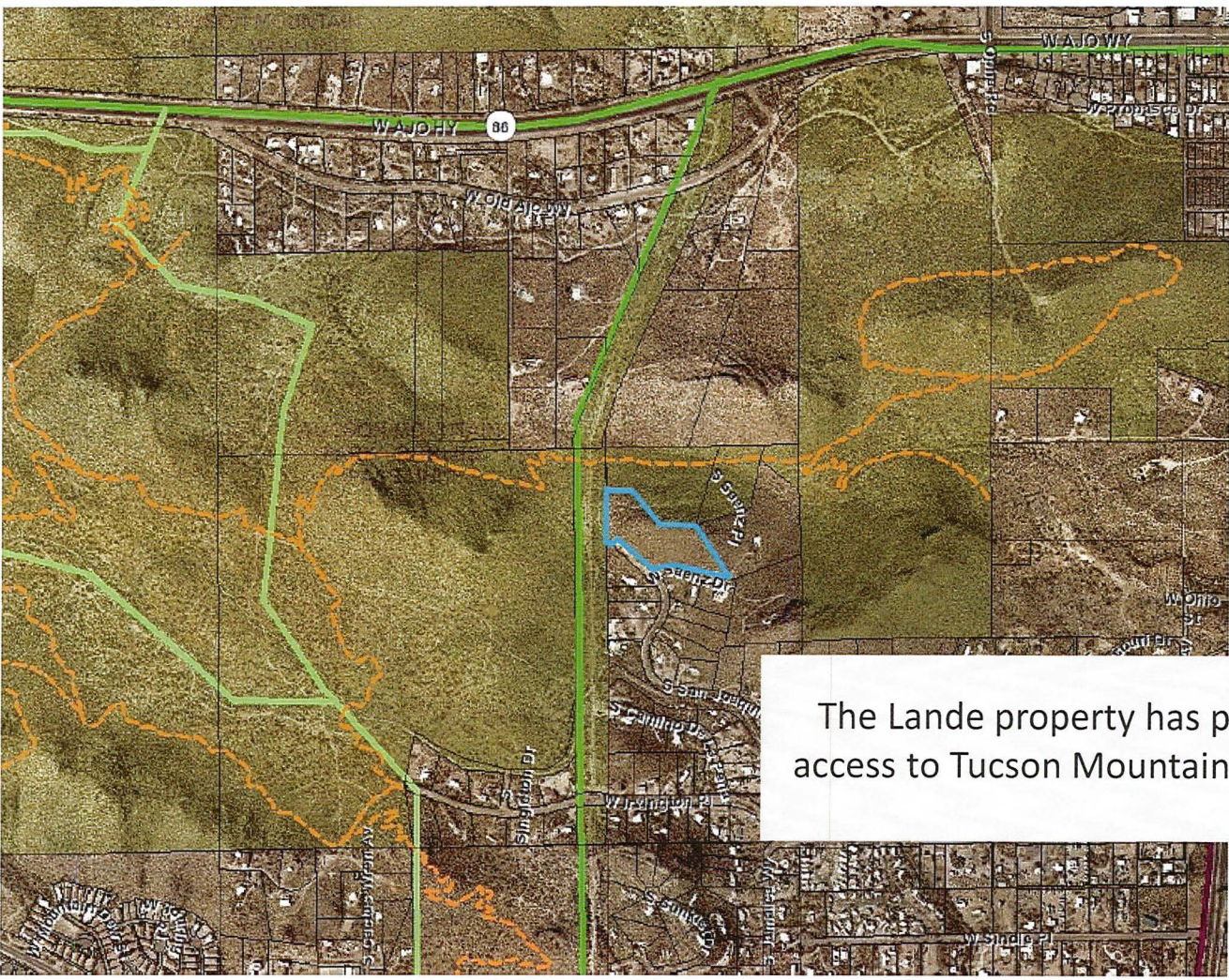
MOUNTAIN PARKS AND NATURAL PRESERVES

Pima County's establishment of Tucson Mountain Park in 1929 marked the beginning of an unparalleled conservation ethic. Two other parks and a natural preserve followed. Ironwood Forest National Monument and Las Cienegas National Conservation Area were established in 2000. Even so, we have not yet assembled a system that protects groups of plants and animals. We must expand our efforts at creating mountain parks to sustain biological diversity in the Sonoran Desert and provide recreation for our citizens.

The Lande property occurs in a location adjacent to Tucson Mountain Park which the Sonoran Desert Conservation Plan identifies as a Mountain Park and Preserve.

It will be incorporated into Tucson Mountain Park.



Lande Property with Nearby Trails



Legend

-  Parcels
 Stewardship Lands
 Lande Property

Trails

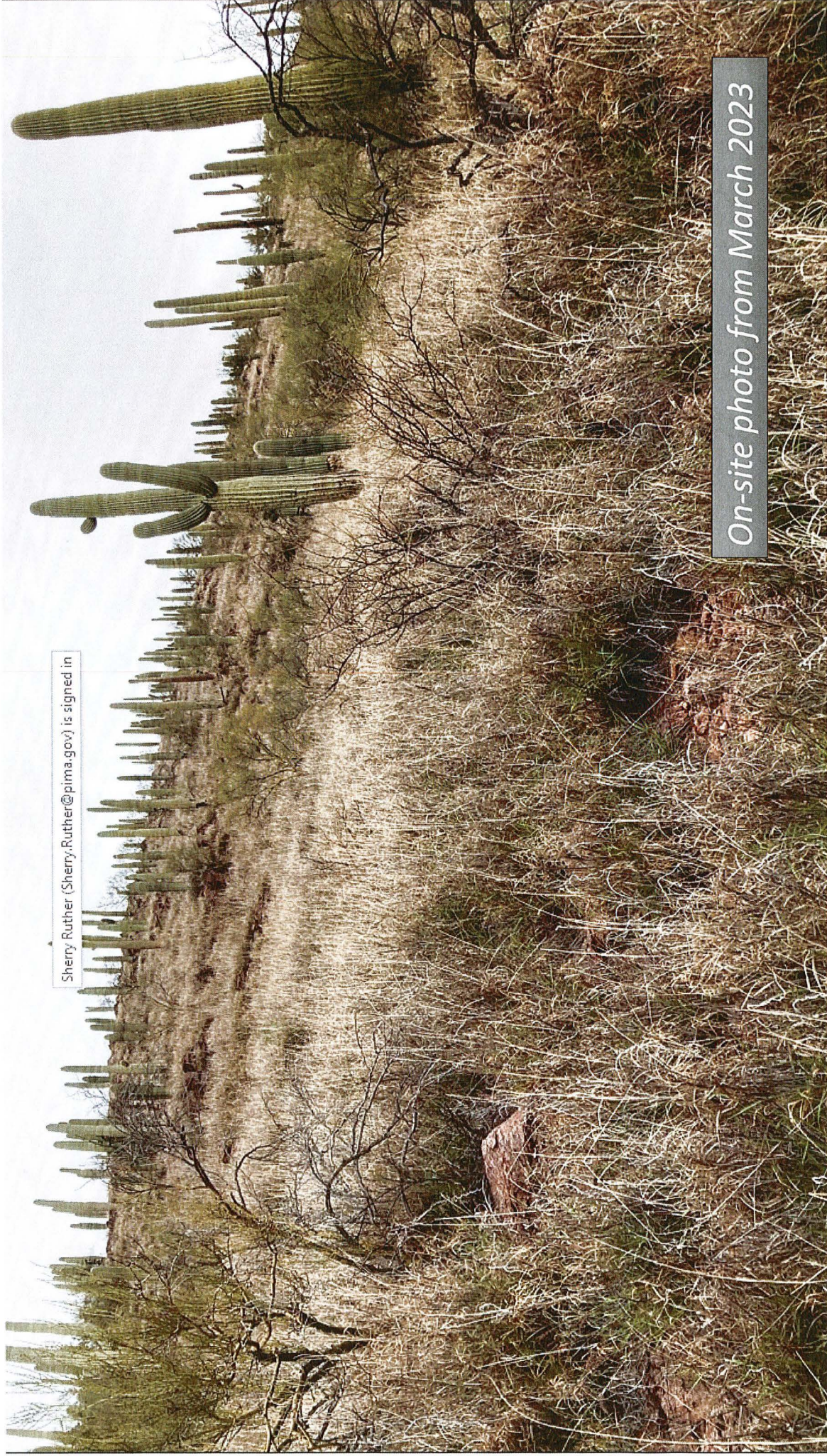
-  Natural Surface Trails
 Greenway Trails

The Lande property has potential to expand trail access to Tucson Mountain Park – Robles Pass Unit.

Notes:

Sherry, Ruther (Sherry.Ruther@pima.gov) is signed in

On-site photo from March 2023





On-site photo from August 2023