

# Total Pima County Overdose Deaths

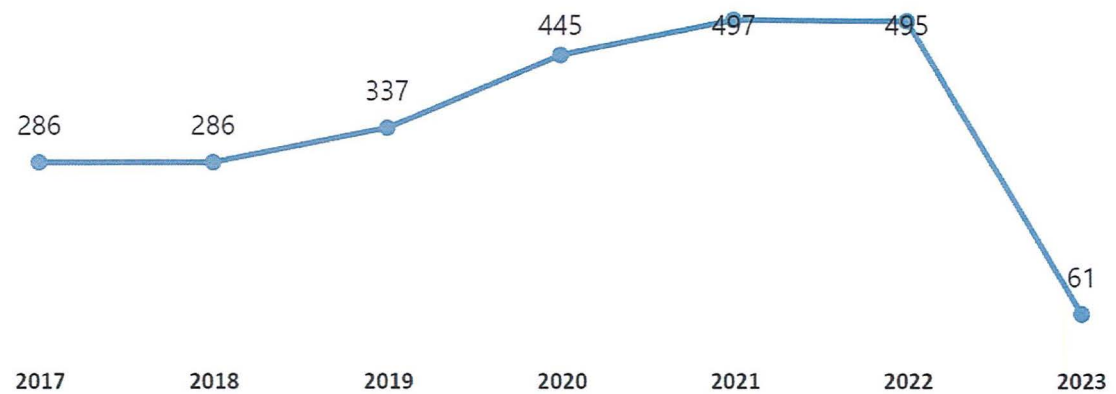
*(Office of the Medical Examiner)*

**2,407**  
Cases

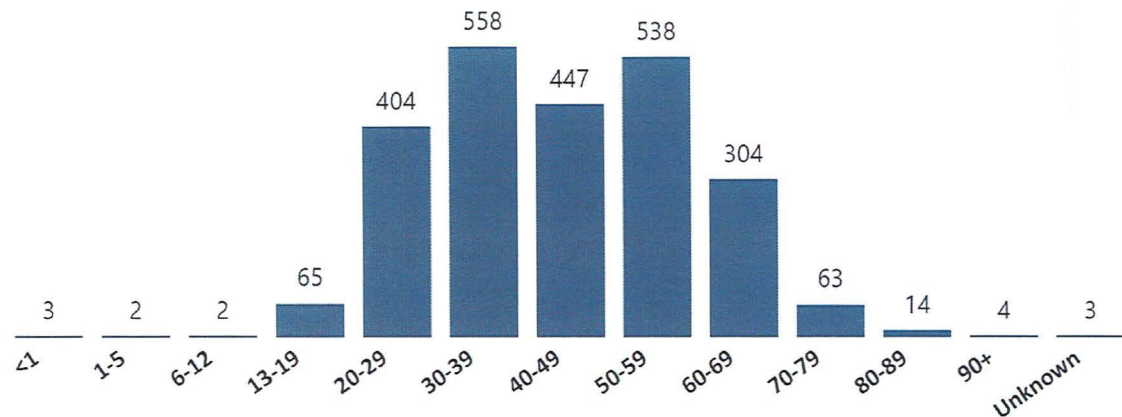
Drugs Contributing	Case Count	%
Polydrug	1221	51%
Single	1186	49%

Age Classification	Case Count	%
Adult	2371	99%
Minor	33	1%
Unknown Age	3	0%

Annual Overdose Deaths



Decedent Age Group



OFFICE OF THE MEDICAL EXAMINER

# Pima County Fentanyl Deaths

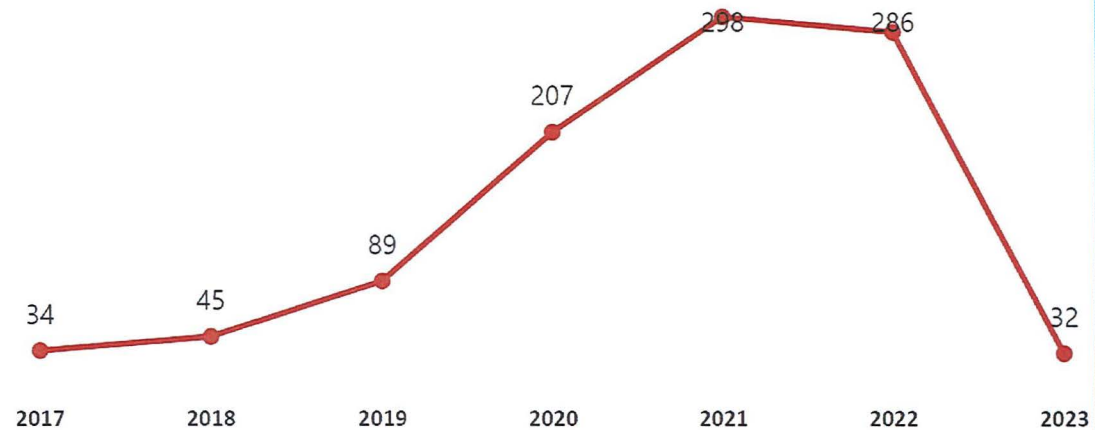
*(Office of the Medical Examiner)*

**991**  
Cases

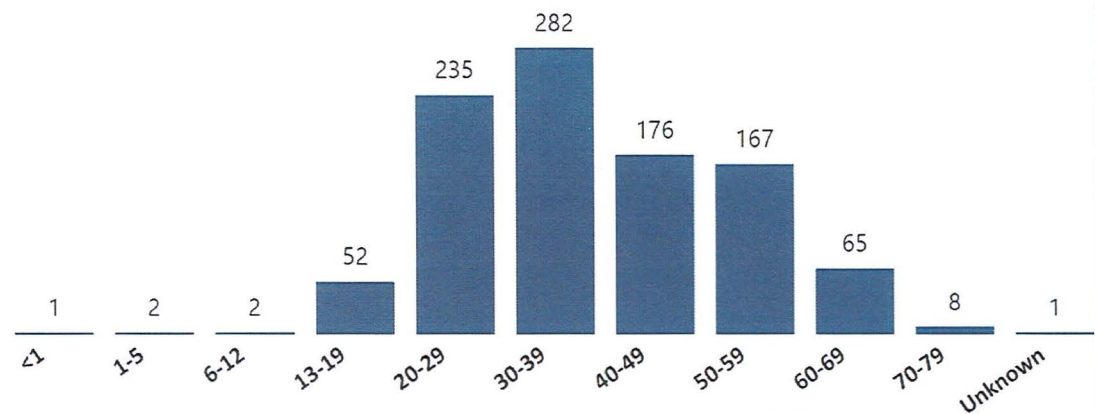
Drugs Contributing	Case Count	%
Single	335	34%
Polydrug	656	66%

Age Classification	Case Count	%
Adult	964	97%
Minor	26	3%
Unknown Age	1	0%

Annual Fentanyl Deaths



Decedent Age Group





# PCHD Efforts to Address Opioid Misuse 2019 - 2022

	Fatal Overdoses	Grant Funding	Key Efforts
2019	311	\$484 K	<ul style="list-style-type: none"> <li>• CMHA program starts</li> <li>• Naxolone distribution, opioid surveillance and fatality reviews begin</li> <li>• Subcontract to provide peer navigation support</li> <li>• RX360</li> </ul>
2020	425	\$ 1.01 M	<ul style="list-style-type: none"> <li>• Two new public health case managers added to link people to care</li> </ul>
2021	482	\$ 1.49 M	<ul style="list-style-type: none"> <li>• Began sub-recipient agreements with TIC and HOPE for overdose prevention services</li> </ul>
2022	458	\$ 1.31 M	<ul style="list-style-type: none"> <li>• Fentanyl kits distributed</li> <li>• Dramatic increase in Naloxone kit distribution</li> <li>• Overdose response protocols and Naloxone training in schools</li> </ul>