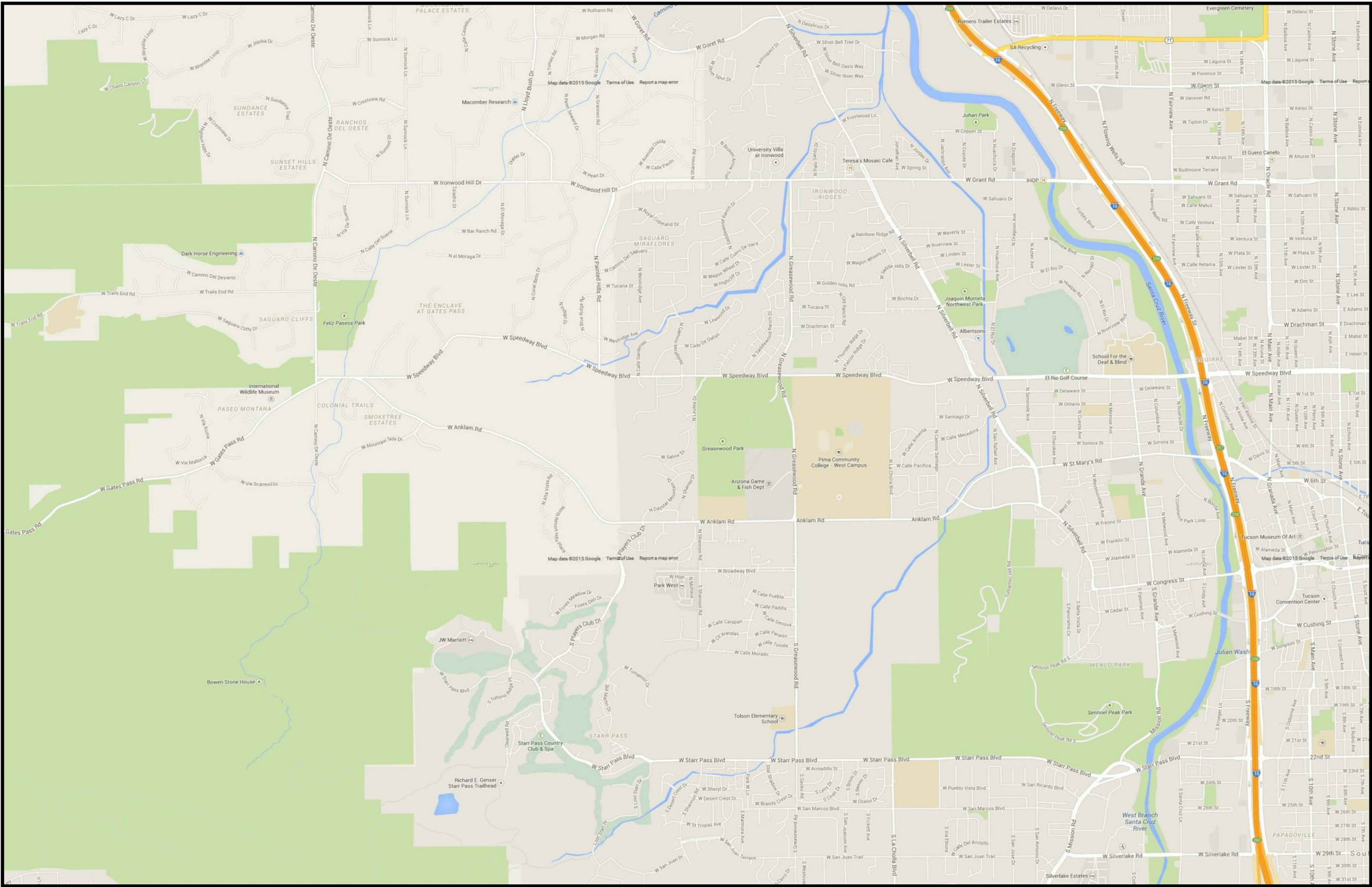


EXHIBIT B-7
MATCH TO SHEET 4 OF 12



MATCH TO SHEET 10 OF 12



INFORMATION IN THIS DOCUMENT IS
PROPRIETARY AND CONFIDENTIAL AND
SHALL NOT BE USED COPIED,
REPRODUCED, OR DISCLOSED WITHOUT
PRIOR WRITTEN CONSENT OF
ZAYO FIBER SOLUTIONS

COMPLETED ROUTE
INCOMPLETE ROUTE



Verizon - Pima Fiber Route

TWO WORKING DAYS
BEFORE YOU DIG, CALL
(602)263-1100
BLUE STAKE CENTER

REVISIONS		
REV	DATE	REVISION DESCRIPTION

TOTAL DRAWING FOOTAGE:

TOTAL SHEET FOOTAGE:

DRAWN BY: BPG Designs DATE: 02/03/15

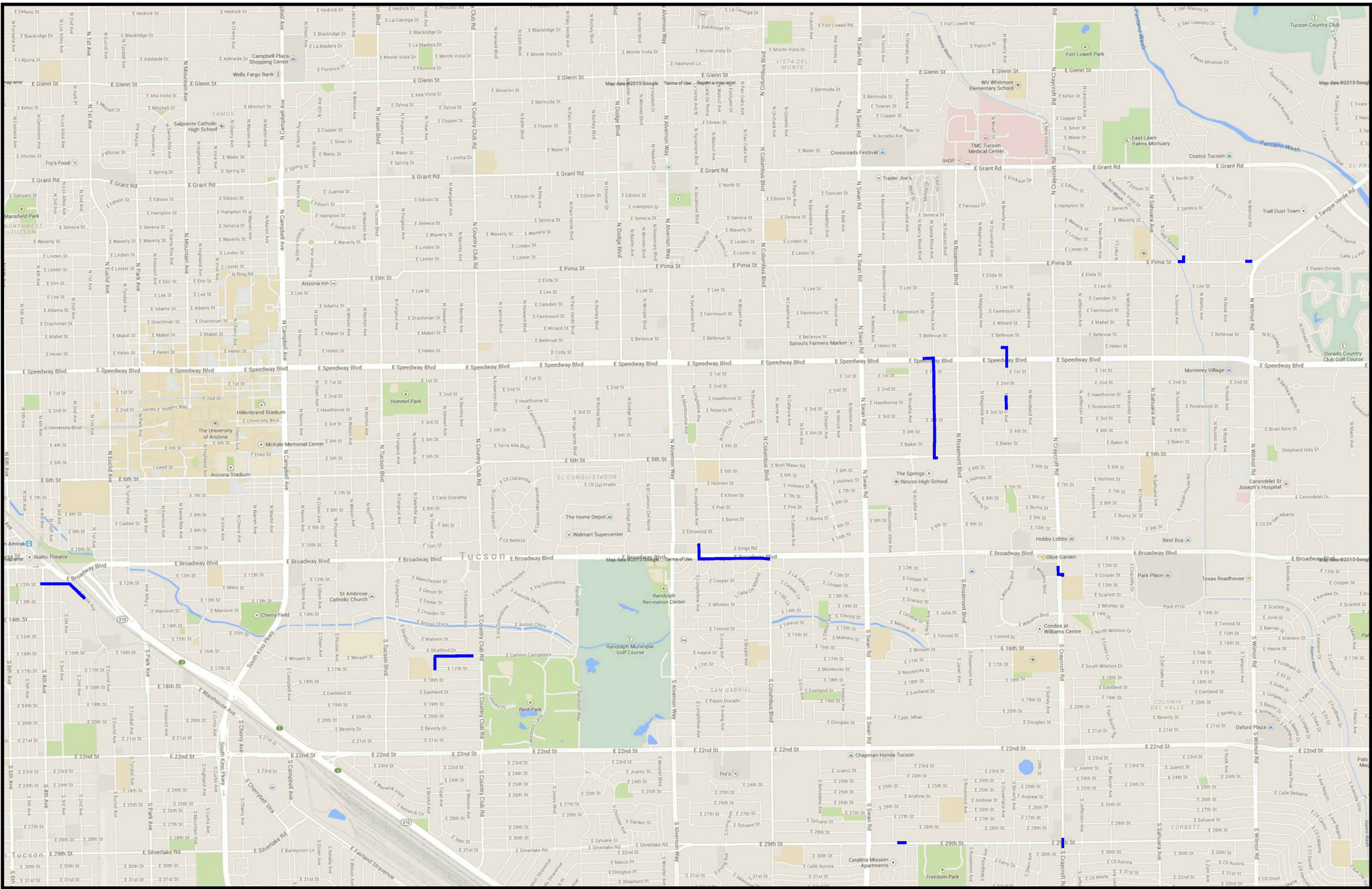
SCALE: NTS

FILE NAME: 12705 SHEET NO.: 7 OF 12

EXHIBIT B-7

EXHIBIT B-8
MATCH TO SHEET 5 OF 12

MATCH TO SHEET 7 OF 12



MATCH TO SHEET 11 OF 12



INFORMATION IN THIS DOCUMENT IS
PROPRIETARY AND CONFIDENTIAL AND
SHALL NOT BE USED COPIED,
REPRODUCED, OR DISCLOSED WITHOUT
PRIOR WRITTEN CONSENT OF
ZAYO FIBER SOLUTIONS

COMPLETED ROUTE
INCOMPLETE ROUTE



Verizon - Pima Fiber Route

TWO WORKING DAYS
BEFORE YOU DIG, CALL
(602)263-1100
BLUE STAKE CENTER

REVISIONS		
REV	DATE	REVISION DESCRIPTION

TOTAL DRAWING FOOTAGE:

TOTAL SHEET FOOTAGE:

DRAWN BY:
BPG Designs

DATE:
02/03/15

SCALE:
NTS

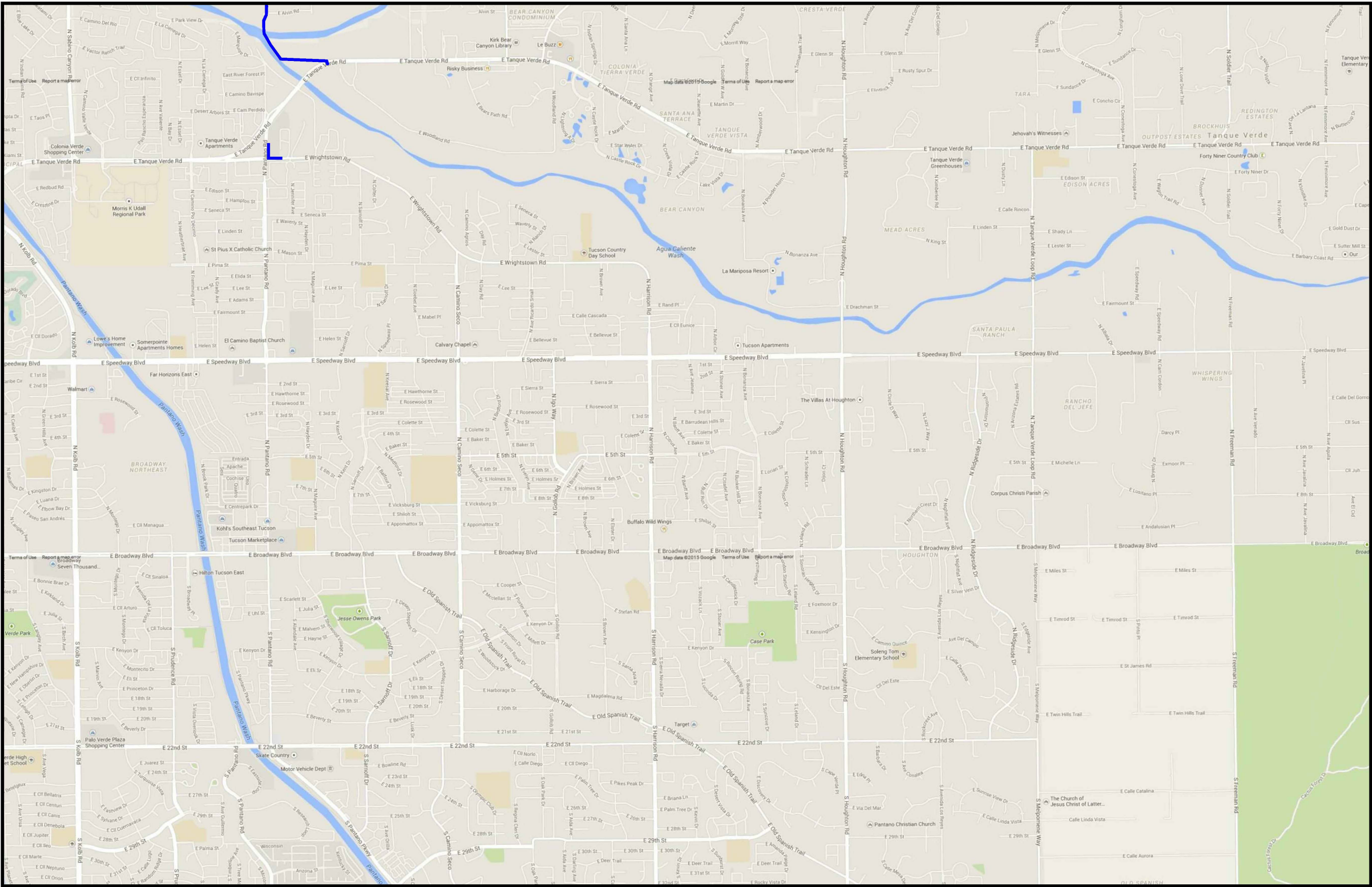
FILE NAME:
12705

SHEET NO.:
8 OF 12

EXHIBIT B-8

EXHIBIT B-9
MATCH TO SHEET 6 OF 12

MATCH TO SHEET 8 OF 12

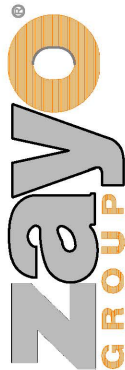


MATCH TO SHEET 12 OF 12



INFORMATION IN THIS DOCUMENT IS
PROPRIETARY AND CONFIDENTIAL AND
SHALL NOT BE USED COPIED,
REPRODUCED, OR DISCLOSED WITHOUT
PRIOR WRITTEN CONSENT OF
ZAYO FIBER SOLUTIONS

COMPLETED ROUTE
INCOMPLETE ROUTE



Verizon - Pima Fiber Route

TWO WORKING DAYS
BEFORE YOU DIG, CALL
(602)263-1100
BLUE STAKE CENTER

REVISIONS		
REV	DATE	REVISION DESCRIPTION

TOTAL DRAWING FOOTAGE:

TOTAL SHEET FOOTAGE:

DRAWN BY:
BPG Designs

DATE:
02/03/15

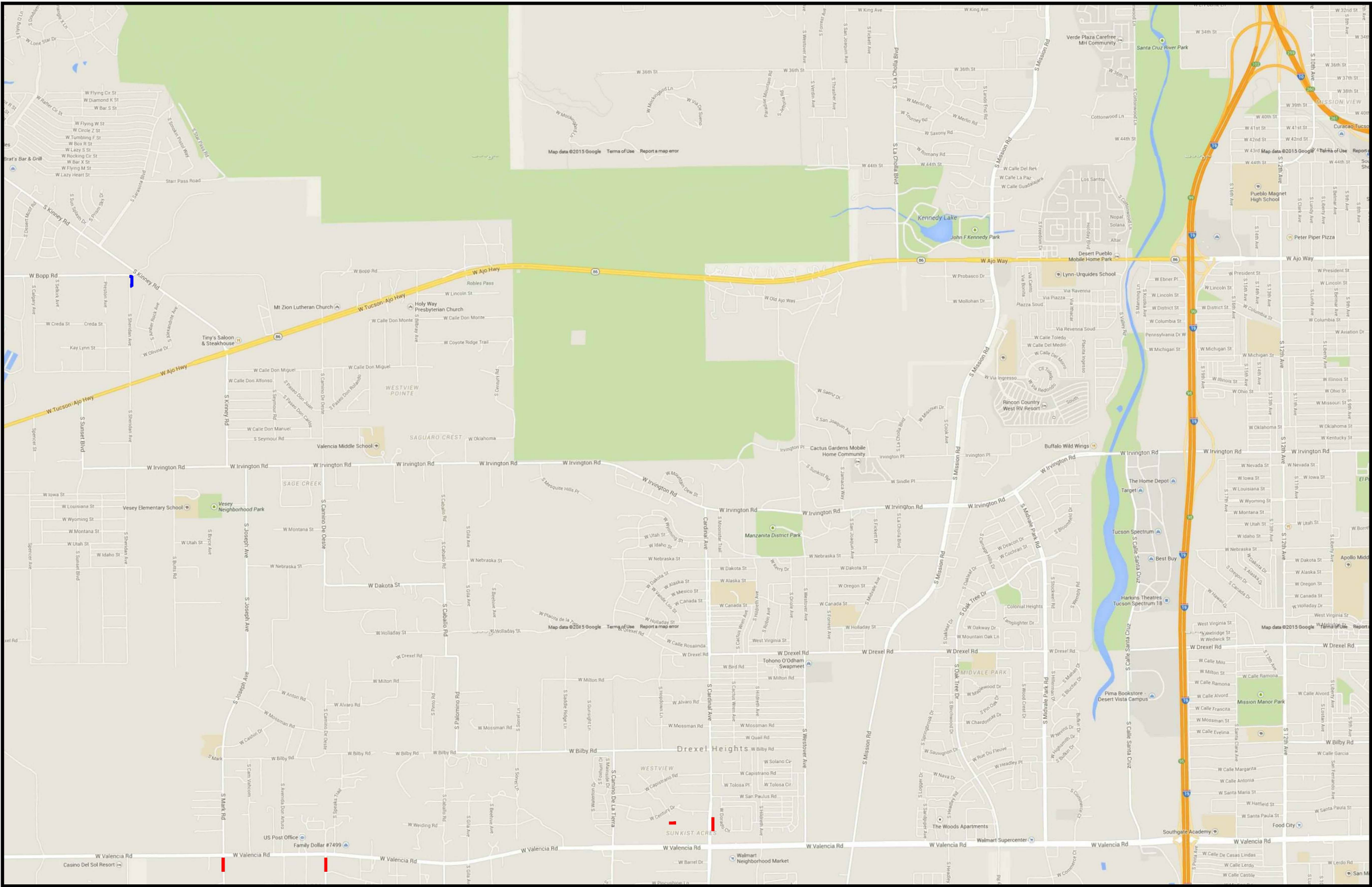
SCALE:
NTS

FILE NAME:
12705

SHEET NO.:
9 OF 12

EXHIBIT B-9

EXHIBIT B-10
MATCH TO SHEET 7 OF 12

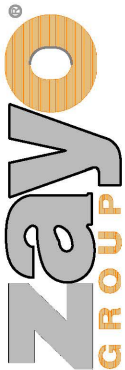


MATCH TO SHEET 11 OF 12



INFORMATION IN THIS DOCUMENT IS
PROPRIETARY AND CONFIDENTIAL AND
SHALL NOT BE USED COPIED,
REPRODUCED, OR DISCLOSED WITHOUT
PRIOR WRITTEN CONSENT OF
ZAYO FIBER SOLUTIONS

COMPLETED ROUTE
INCOMPLETE ROUTE



Verizon - Pima Fiber Route

TWO WORKING DAYS
BEFORE YOU DIG, CALL
(602)263-1100
BLUE STAKE CENTER

REVISIONS		
REV	DATE	REVISION DESCRIPTION

TOTAL DRAWING FOOTAGE:

TOTAL SHEET FOOTAGE:

DRAWN BY:
BPG Designs

DATE:
02/03/15

SCALE:
NTS

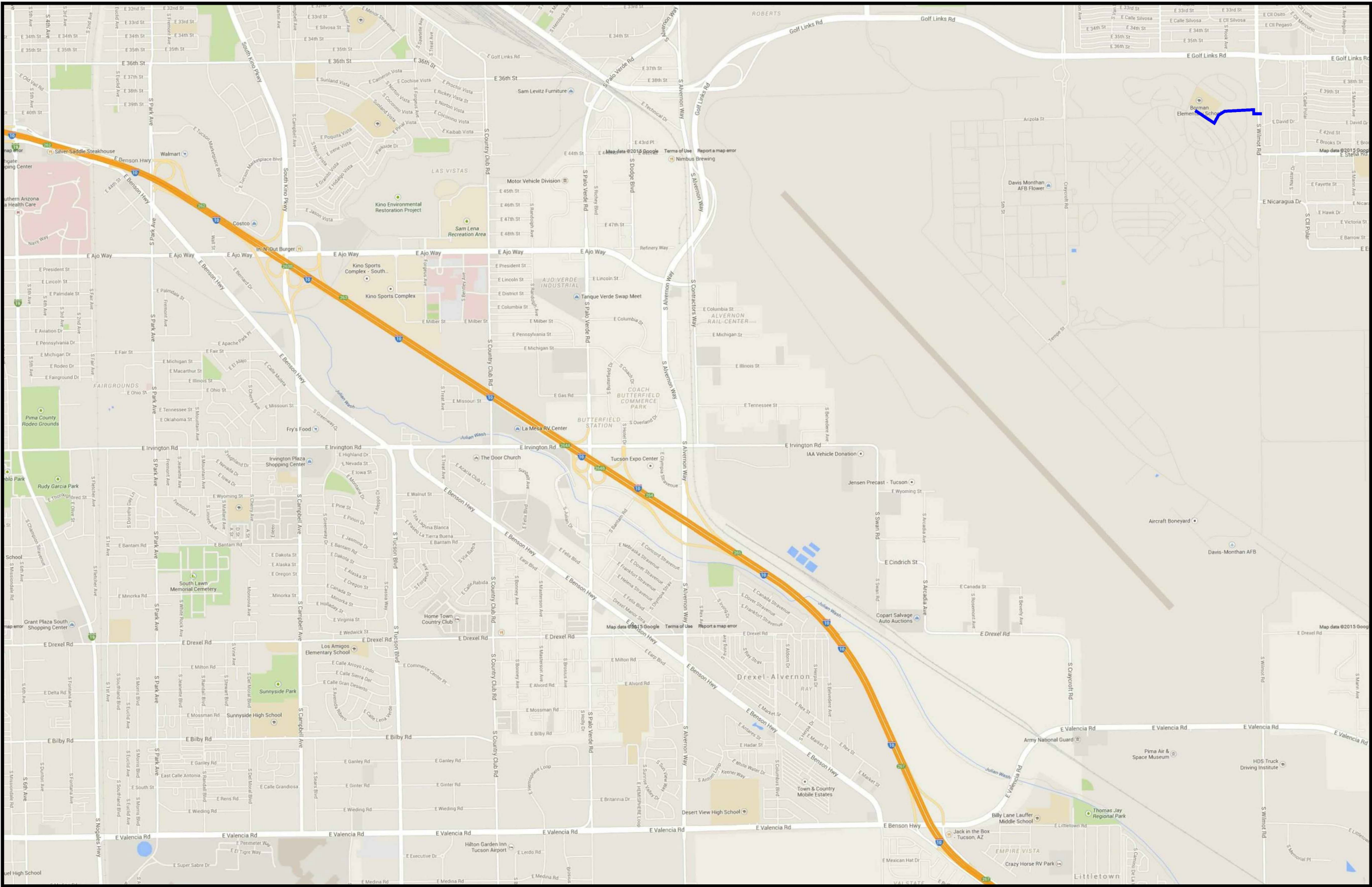
FILE NAME:
12705

SHEET NO.:
10 OF 12

EXHIBIT B-10

EXHIBIT B-11
MATCH TO SHEET 8 OF 12

MATCH TO SHEET 10 OF 12

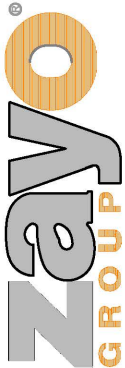


MATCH TO SHEET 12 OF 12



INFORMATION IN THIS DOCUMENT IS
PROPRIETARY AND CONFIDENTIAL AND
SHALL NOT BE USED COPIED,
REPRODUCED, OR DISCLOSED WITHOUT
PRIOR WRITTEN CONSENT OF
ZAYO FIBER SOLUTIONS

COMPLETED ROUTE
INCOMPLETE ROUTE



Verizon - Pima Fiber Route

EXHIBIT B-11

TWO WORKING DAYS
BEFORE YOU DIG, CALL
(602)263-1100
BLUE STAKE CENTER

REVISIONS		
REV	DATE	REVISION DESCRIPTION

TOTAL DRAWING FOOTAGE:

TOTAL SHEET FOOTAGE:

DRAWN BY:
BPG Designs

DATE:
02/03/15

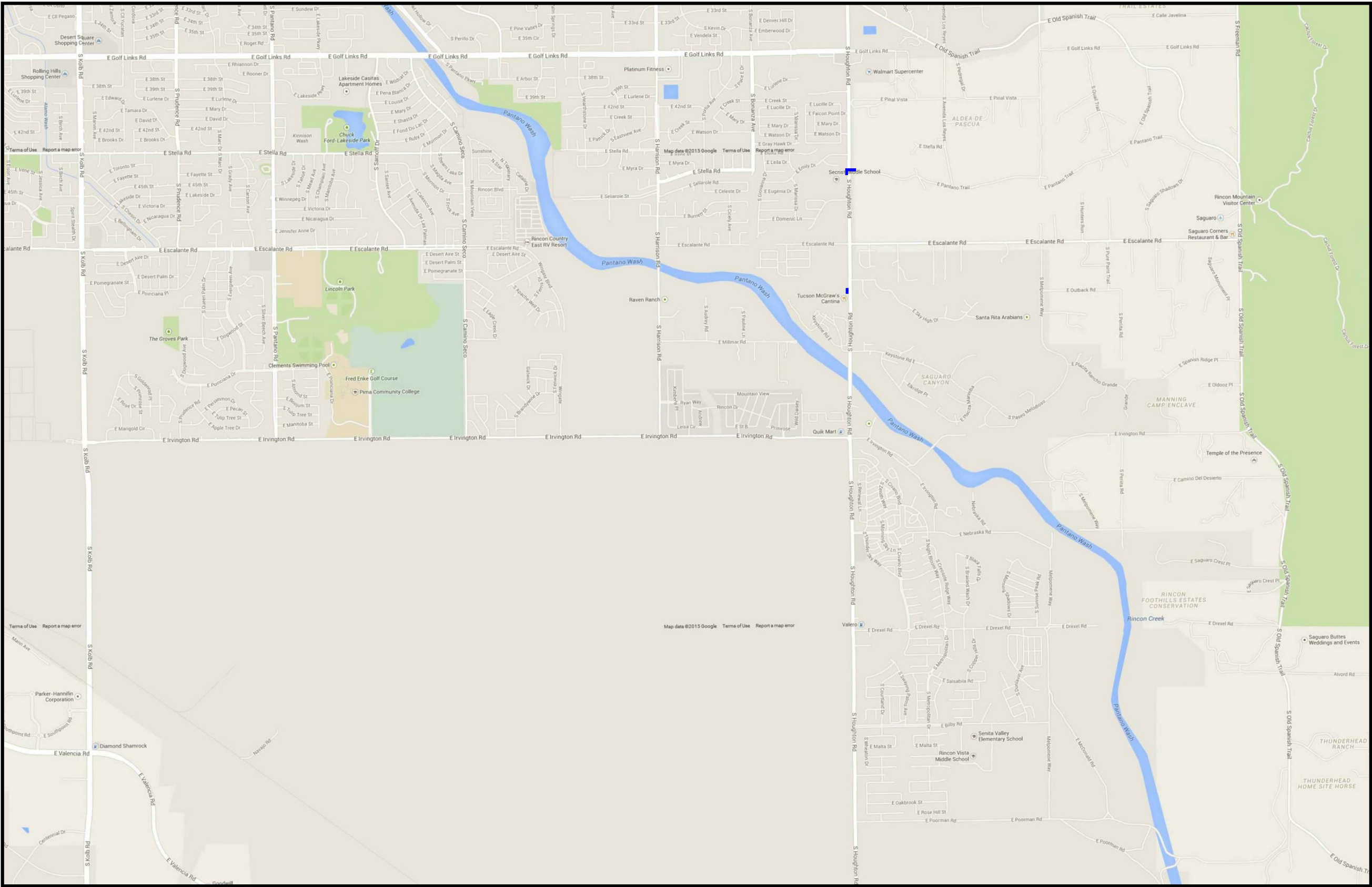
SCALE:
NTS

FILE NAME:
12705

SHEET NO.:
11 OF 12

EXHIBIT B-12
MATCH TO SHEET 9 OF 12

MATCH TO SHEET 11 OF 12



INFORMATION IN THIS DOCUMENT IS
PROPRIETARY AND CONFIDENTIAL AND
SHALL NOT BE USED COPIED,
REPRODUCED, OR DISCLOSED WITHOUT
PRIOR WRITTEN CONSENT OF
ZAYO FIBER SOLUTIONS

COMPLETED ROUTE
INCOMPLETE ROUTE



Verizon - Pima Fiber Route

TWO WORKING DAYS
BEFORE YOU DIG, CALL
(602)263-1100
BLUE STAKE CENTER

REVISIONS		
REV	DATE	REVISION DESCRIPTION

TOTAL DRAWING FOOTAGE:
-

TOTAL SHEET FOOTAGE:
-

DRAWN BY:
BPG Designs

DATE:
02/03/15

SCALE:
NTS

FILE NAME:
12705

SHEET NO.:
12 OF 12

EXHIBIT B-12