

SONORAN DESERT CONSERVATION PLAN

BIOLOGICAL CORRIDORS AND CRITICAL HABITAT

The work on the biological corridors and critical habitat element of the Sonoran Desert Conservation Plan revealed that biology is the basis for all other elements. The strong interconnections of all five elements is critical in forming a viable land management plan that ensures continuing biodiversity for Pima County.

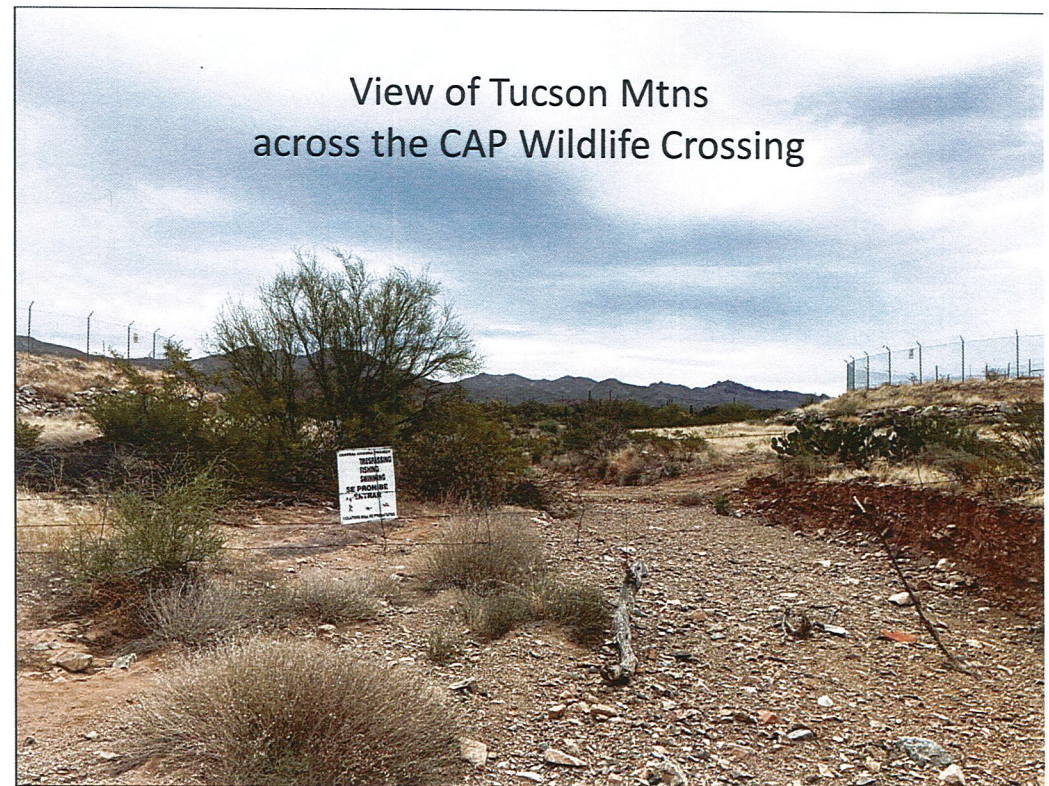
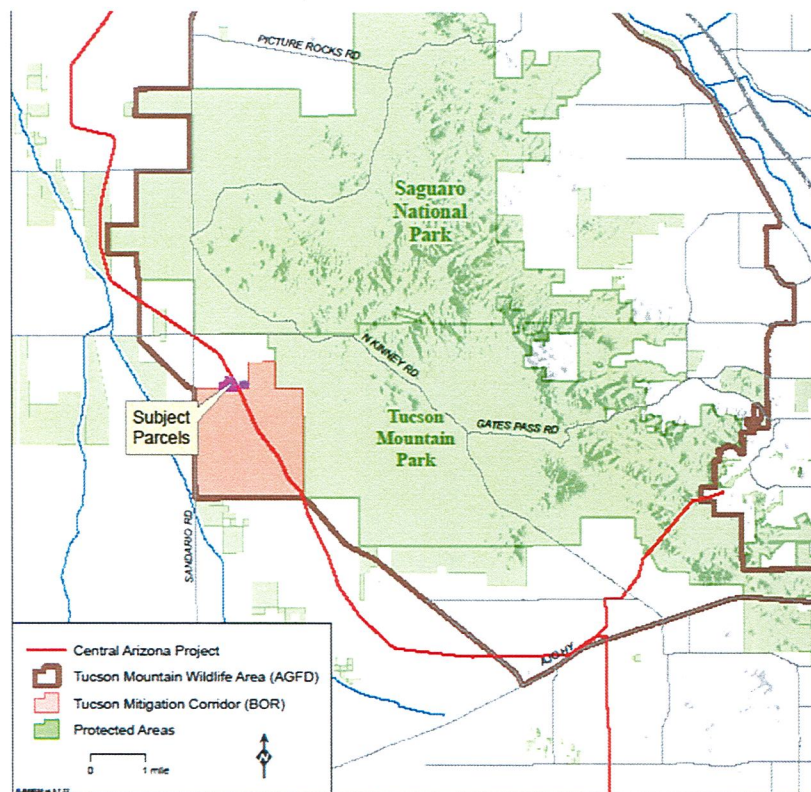
LEGEND

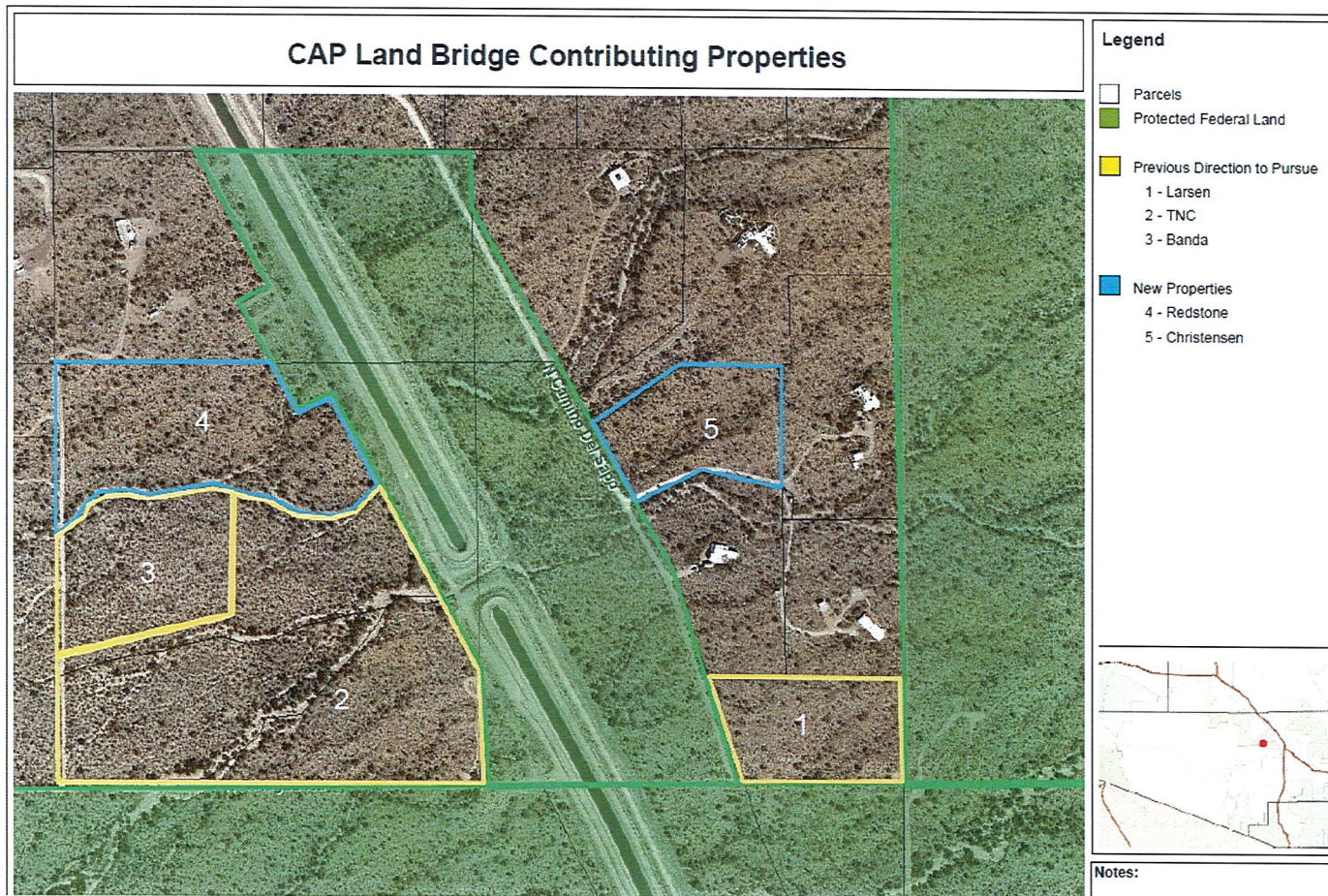
- Important Riparian Areas
- Biological Core Areas
- Multiple Use Areas
- Wildlife Corridors

The Christensen property occurs in a location recognized during development of the Sonoran Desert Conservation Plan for its importance in maintaining habitat connectivity and wildlife corridors.

Acquisition of Christensen Property

together with the previous TNC and Redstone property acquisitions protects one of the few constructed wildlife crossings over the CAP



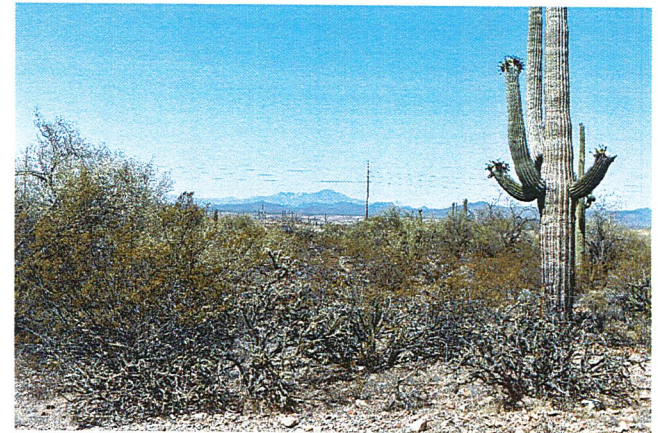
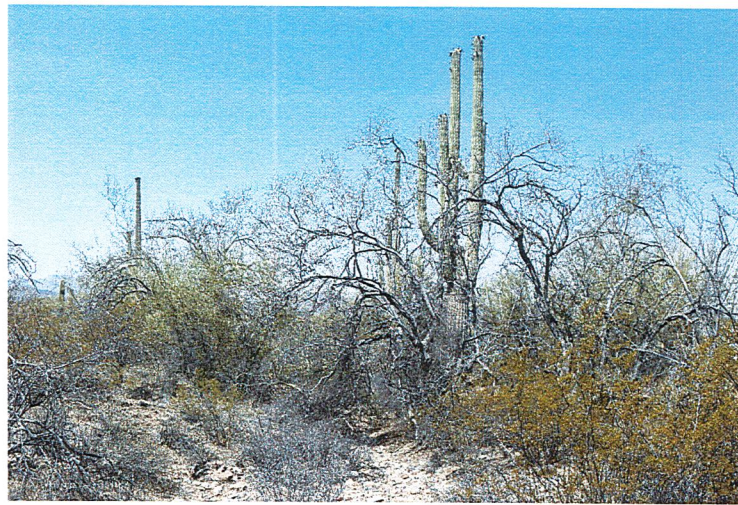


Acquisition of Christensen Property (#5)

protects an undeveloped corridor connecting federally conserved land

Acquisition of Christensen Property

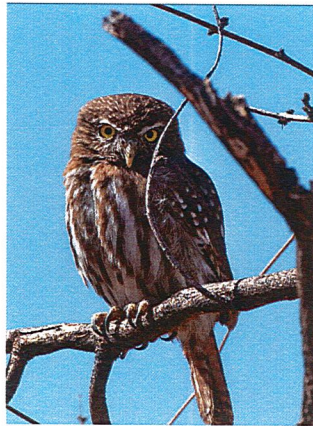
maintains habitat & dispersal corridors for MSCP Covered Species (pygmy-owl, Sonoran desert tortoise, Tumamoc globeberry) and other important native species such as bighorn sheep.



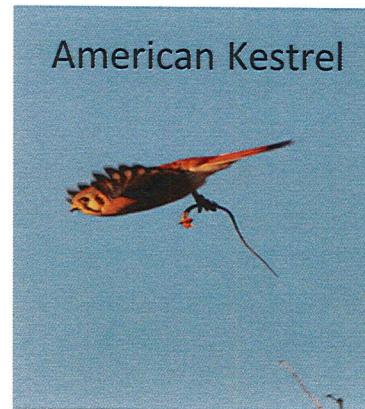
Species known to use or expected to use the Christensen Property and CAP wildlife crossing



Sonoran desert tortoise



Cactus ferruginous pygmy-owl



Tumamoc globeberry



American Badger



Desert mule deer



Javelina



Young bighorn rams that used CAP wildlife crossings to enter the Tucson Mitigation Corridor.