



THE UNIVERSITY OF ARIZONA

Cooperative Extension

Pima County

## Pima County Cooperative Extension

*Research-based education to improve lives, families, communities, the environment, and economies.*

**Claire L. Zucker**

Director, Pima County Cooperative Extension, University of Arizona

(520) 869-8553

[clzucker@arizona.edu](mailto:clzucker@arizona.edu)

4210 North Campbell, Tucson, Arizona

[www.extension.arizona.edu/pima](http://www.extension.arizona.edu/pima)

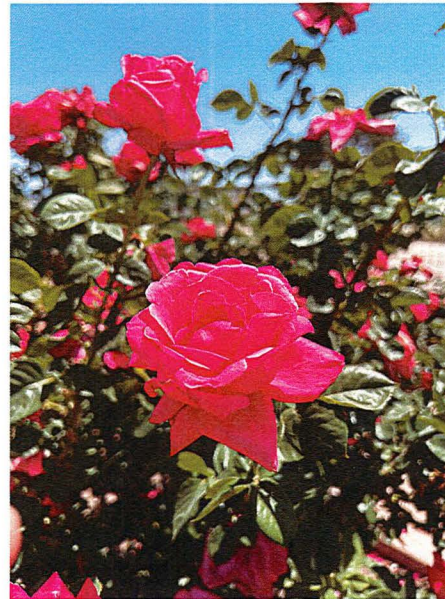
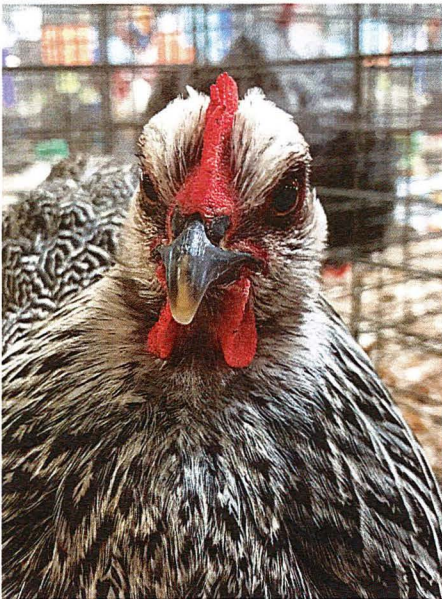




THE UNIVERSITY OF ARIZONA  
COLLEGE OF AGRICULTURE & LIFE SCIENCES  
**Cooperative Extension**  
Pima County

# Pima County Cooperative Extension

University of Arizona Cooperative Extension  
Division of Agriculture, Life & Veterinary  
Sciences & Cooperative Extension





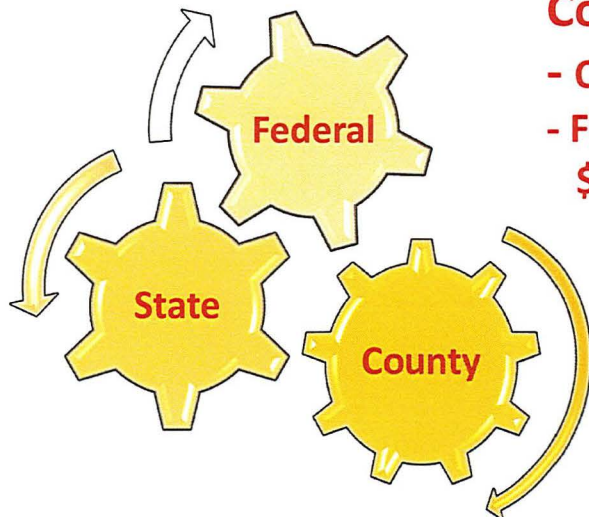
# Cooperative Extension - Translating Research into Action

Unprecedented Reach - Through Land Grant Universities and into every County

Authorization: Federally Authorized under the 1914 Smith Lever Act.

Re-authorization by the AZ Legislature: 1974 & 1986

## Funding and Support



## County Support

- Office Accommodations
- Financial Appropriations  
\$151,400 in FY22 & FY23





**Pima Extension Office  
& Master Gardener  
Demonstration Garden**

## Today's Presentation

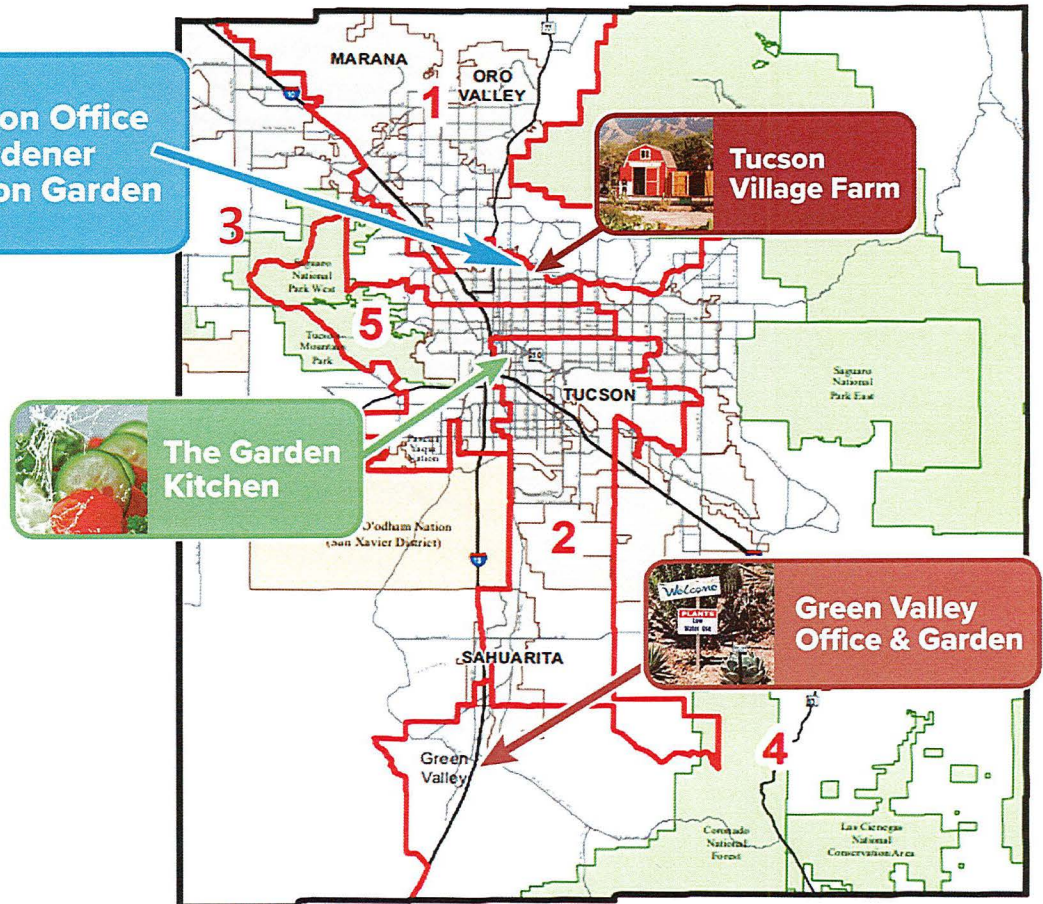
Where we are located

What we do

What is our Impact

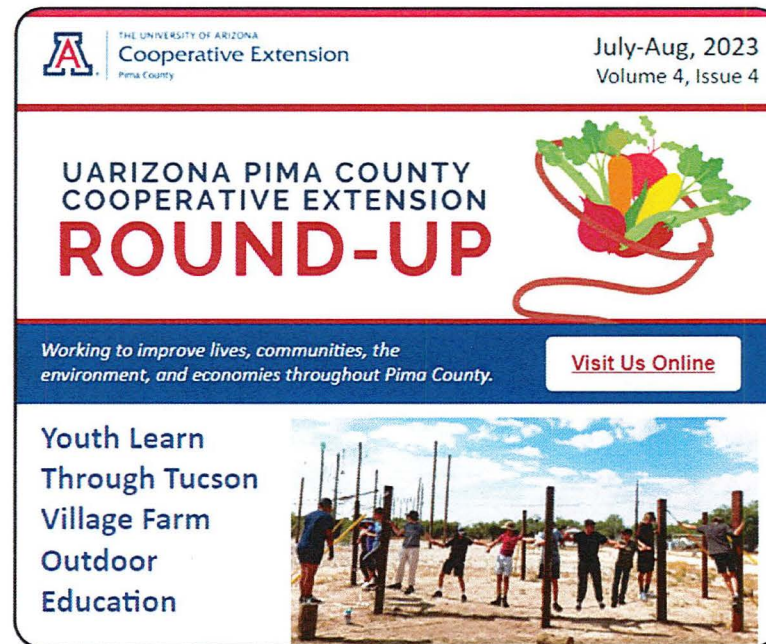
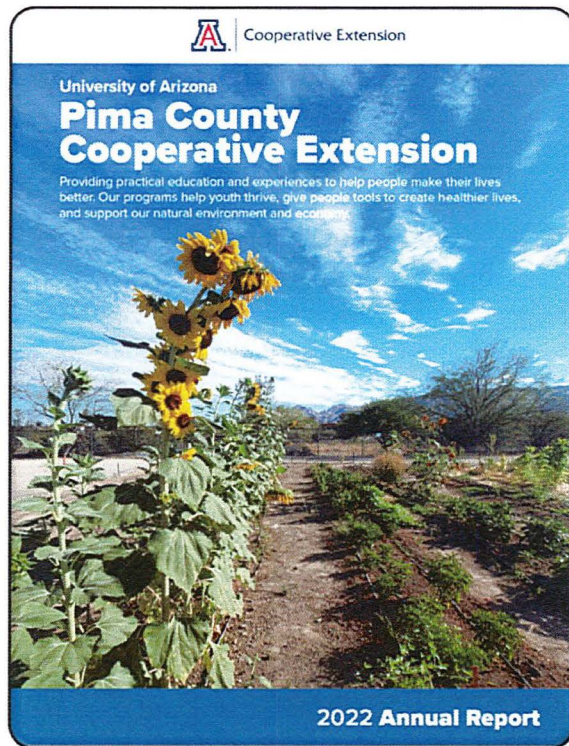
What is County support achieving

Future opportunities



## Pima County Cooperative Extension

### Annual Reports | Bi-monthly Newsletters | Quarterly Program Reports



## Pima County Cooperative Extension Reaching 36,000 people with over 100,000 hours of education in 2022

4-H Youth Education  
Clubs and 4-H Projects,  
and Tucson Village Farm



Ag and Natural Resources  
Horticulture, Sustainable  
Landscapes, Invasives Outreach



Health  
Nutrition, Culinary, financial,  
and Parenting Education

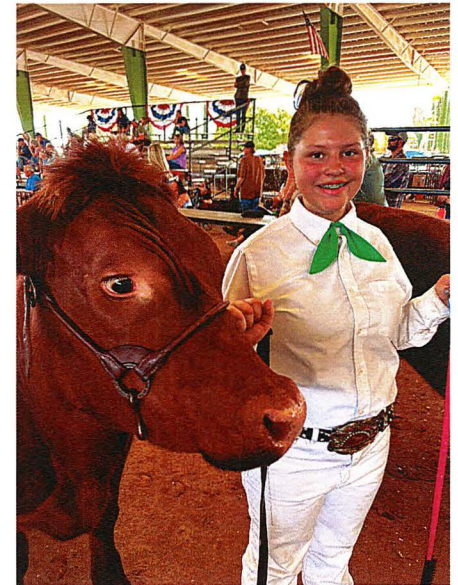
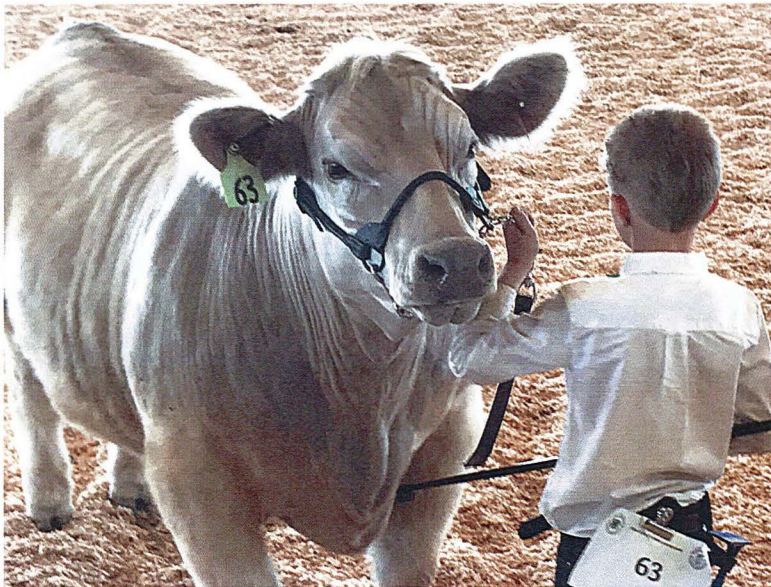




## 4-H Clubs: Over 27,000 hours of education and mentoring to Pima County Youth

Because of... Pima County Extension 4H Clubs

Over 700 kids in rural and urban Pima County had opportunities to raise and compete livestock at the Pima County Fair, participate in leadership opportunities, visit a working ranch, and **build lifelong skills for their future.**

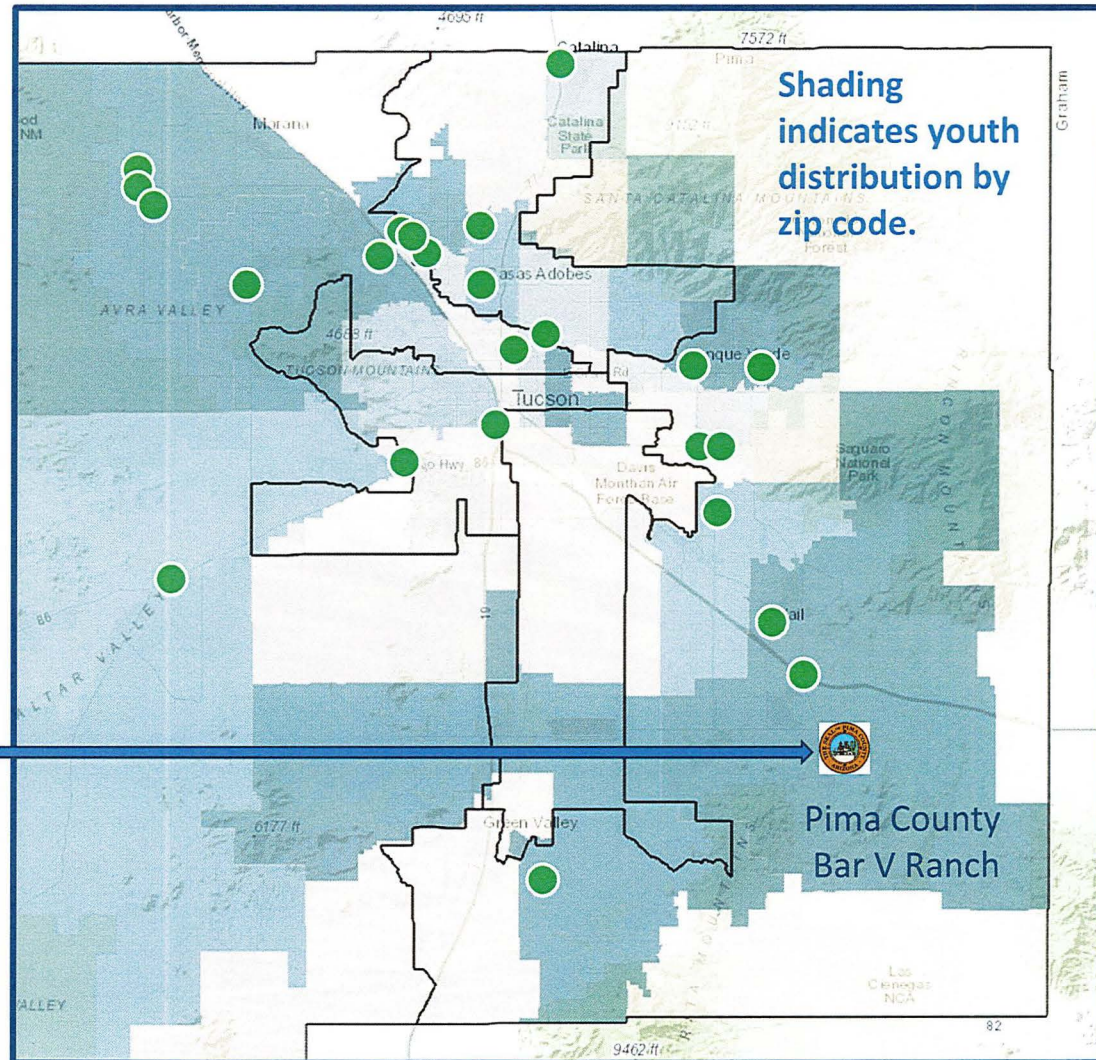




THE UNIVERSITY OF ARIZONA  
**Cooperative Extension**  
Pima County

## 4-H Clubs Distribution in Pima County

Ranch Education  
in coordination with  
PCNR Parks & Recreation



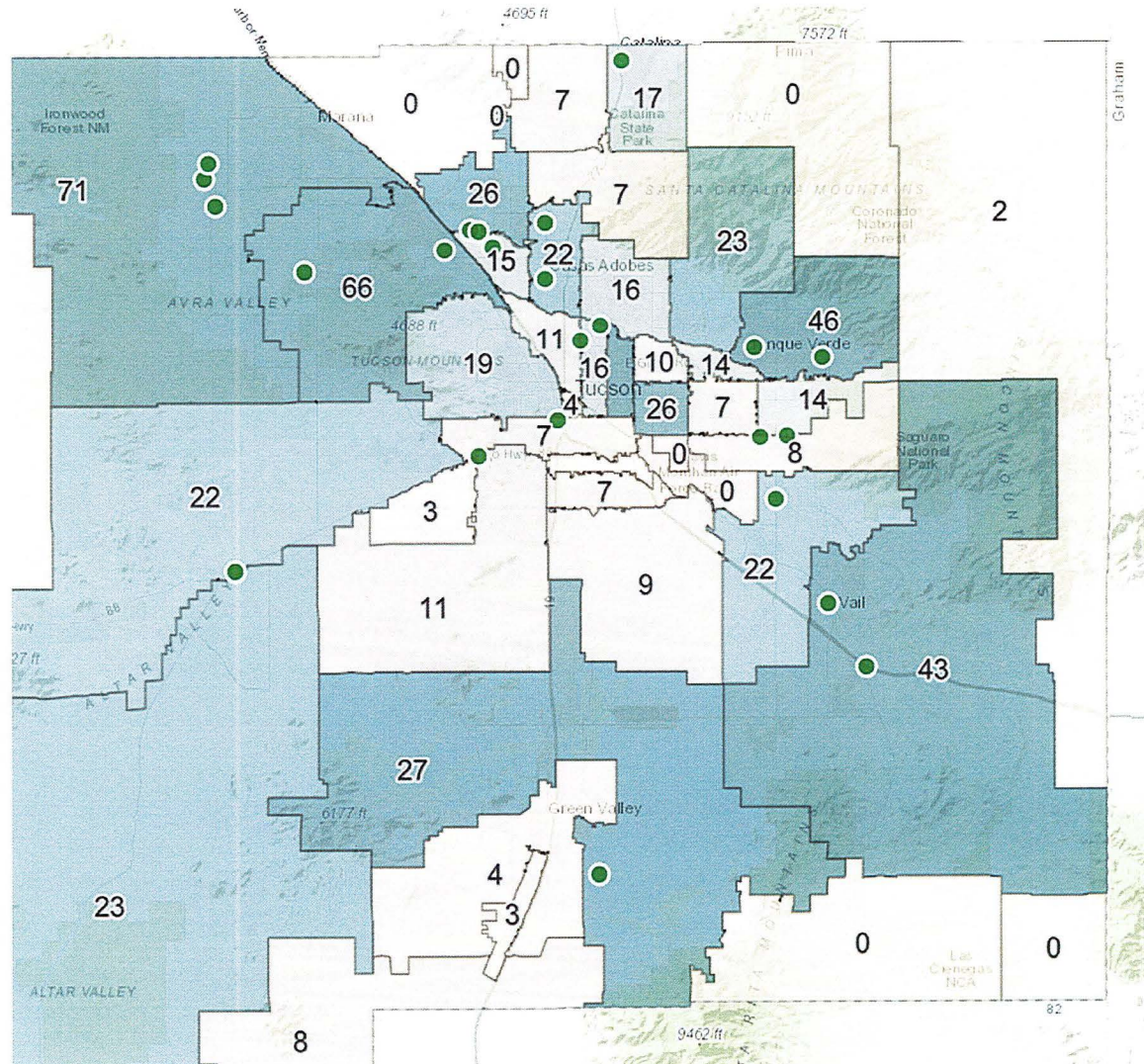
**4-H**



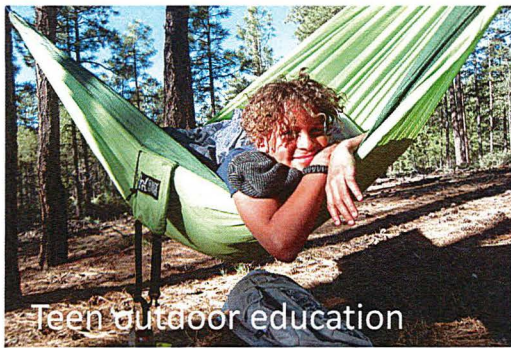


## 4-H Clubs

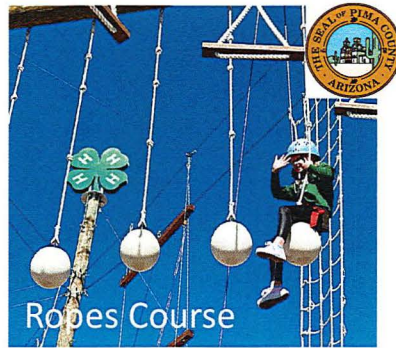
## 4-H Youth distribution by zip code in Pima County



**4-H Tucson Village Farm: 7000+ youth, School Programs, Camps, Classes**  
**35,000 hours of Education: Ag, Health & nutrition, Team Building, and More!**



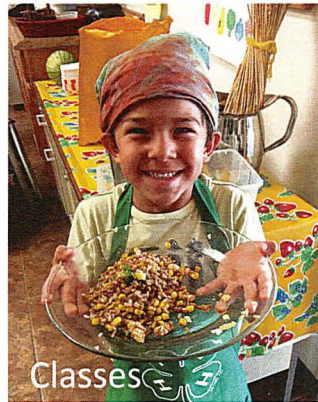
Teen outdoor education



Ropes Course

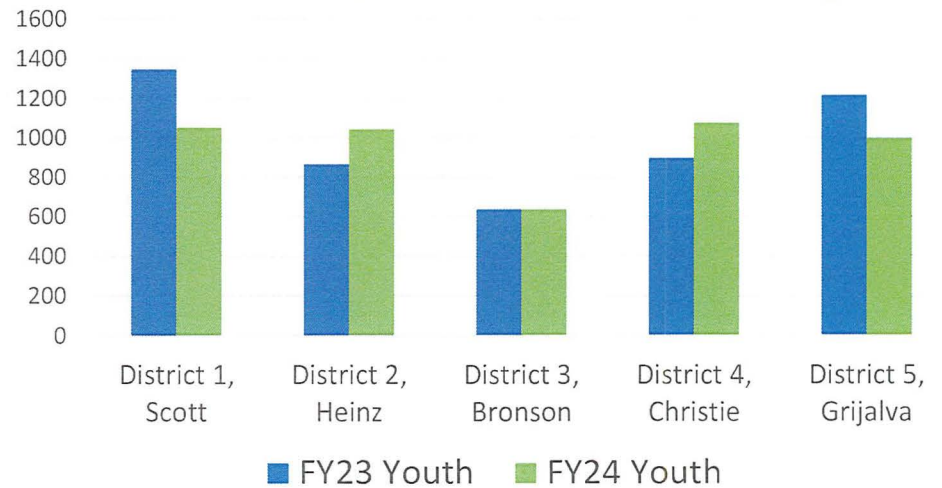


School Field Trips



Classes

Because of .....  
**TVF School Field Trips,**  
**Over 5000 Youth learn they can grow and**  
**eat healthy food to make them strong!**





## Master Gardeners reach 20,000 people through presentations, tours, Q&A, & publications

### Because of.... Pima County Extension Master Gardener Program

Over 200 trained Master Gardeners help Pima County residents grow plants, conserve water, and landscape to improve their homes, yards, and lives.

#### Pima Extension Master Gardener Program



**6,483 Attended one of 94  
Master Gardener  
Presentations**



**2,500 Visited a  
Demonstration  
Garden**



**2,135 Asked a plant  
question**



**Veterans learn from Master Gardeners and gain community connection and gardening skills at the Green Valley Extension Office**



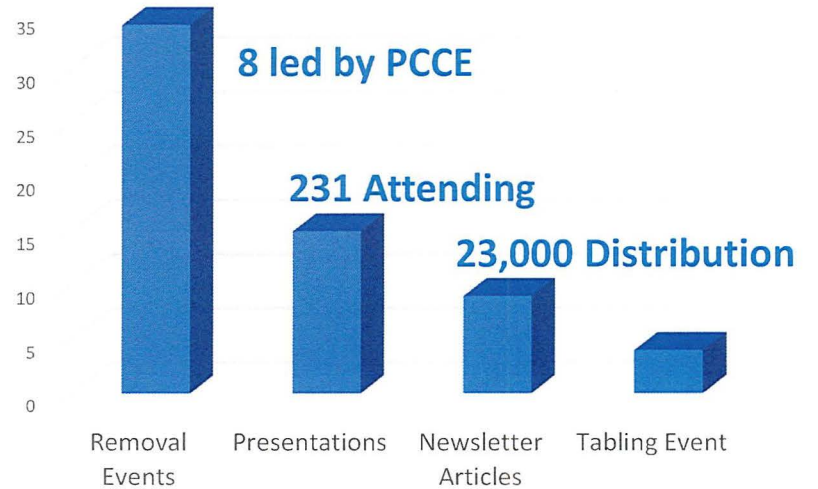
THE UNIVERSITY OF ARIZONA  
**Cooperative Extension**  
 Pima County

## Smartscape program supported by Tucson Water Rainwater harvesting & water-wise landscapes

1000+ people attend the Sustainable Landscapes Expo  
 Tabling by Pima County Departments



## Invasives Outreach





## The Garden Kitchen: 2000+ people gain nutrition & health education

### Because of... The Garden Kitchen / SNAP Education

People have access to a safe space to help them increase their activity and grow, prepare, and eat healthy food. The Garden Kitchen engaged with 30 partners in 2022, provided technical gardening assistance for 18 community gardens, and initiated new mobile food program.





## **Expand Food and Nutrition Education (EFNEP): in-depth nutrition and activity education**

### **Because of... The EFNEP Program**

Pima County residents have access to a free eight-week class series on nutrition, cooking, and healthy behavioral changes. Reaching into 32 community centers and schools last year, and teaching over 300 classes to parents, children, and seniors.

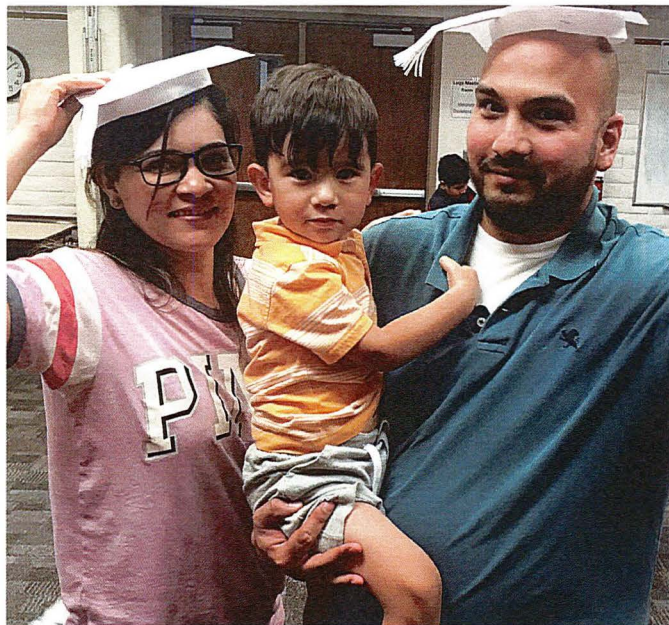




## **Family Engagement Program: Parenting education throughout Pima County**

### **Because of... The Family Engagement Program**

Parents and caregivers learned about child brain development, relationship building, misbehavior, and financial literacy through 262 free workshops in 2022. Breaking new ground with classes for parents of special needs children and teaching incarcerated individuals in the Arizona State Prison system.



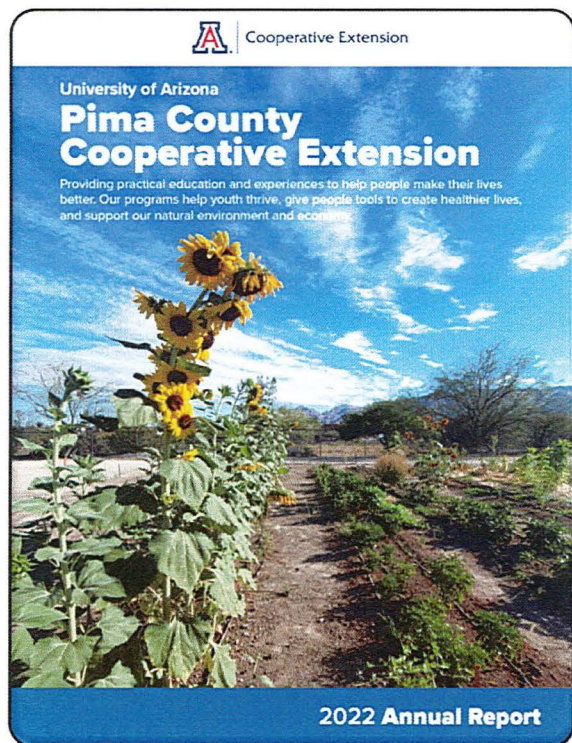


THE UNIVERSITY OF ARIZONA

Cooperative Extension

Pima County

## Pima County Cooperative Extension – Pima County Support Enables:



- Groundskeeping and supplies for facilities provided by the County.
- Tucson Village Farm Ropes Course: Teaching youth and community team building and trust.
- 4-H Ranch Education: Bringing youth development curriculum to Bar V Ranch
- Invasives Outreach: Helping the County reach our community to battle invasive grasses.

Funding through the appropriations mechanism allows every dollar to go straight to programming.

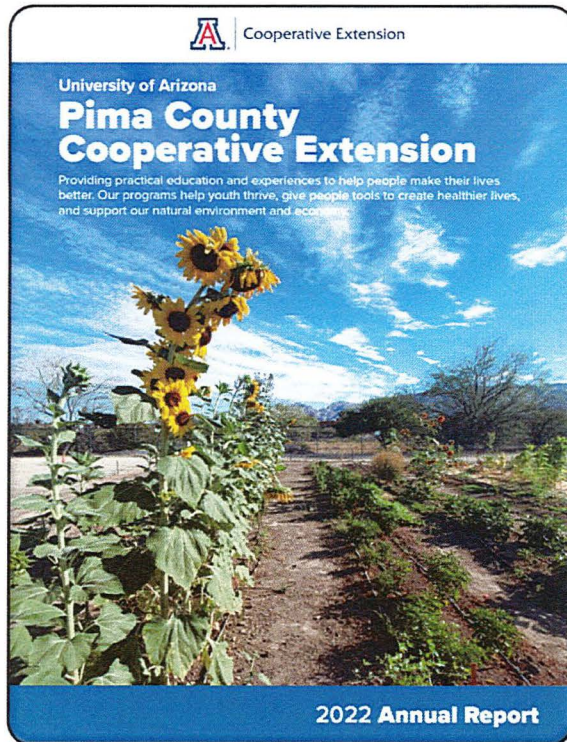




THE UNIVERSITY OF ARIZONA

Cooperative Extension

Pima County



## Future Opportunities

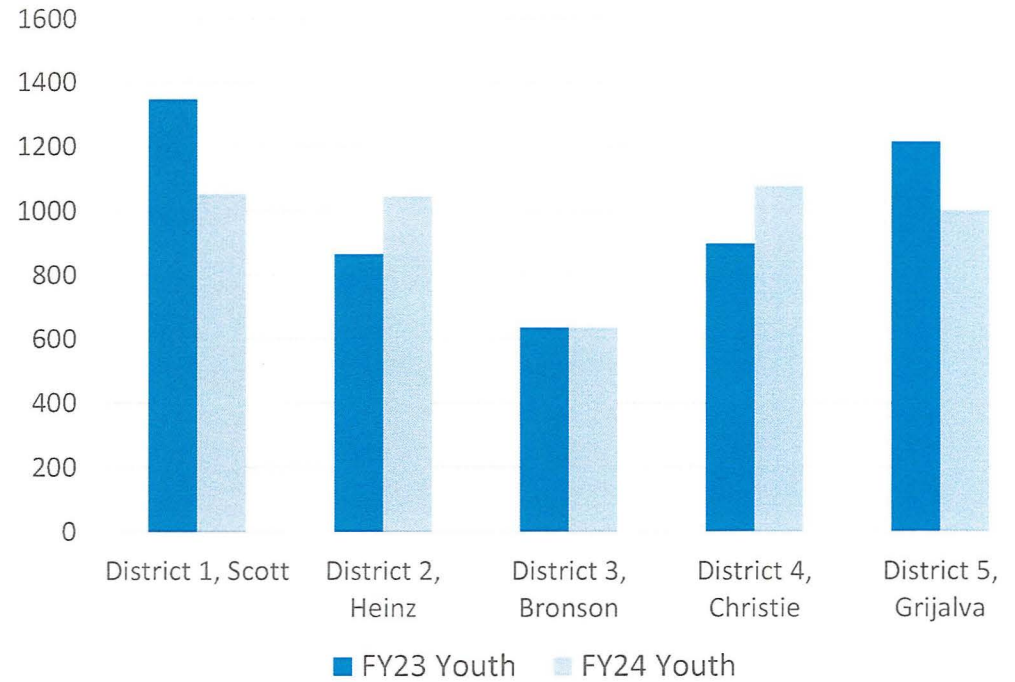
- Maintain existing County-supported programs by keeping up with inflation and cost of living adjustments.
- Expand ranch education to other Pima County properties and create ranch-raised beef youth development opportunities.
- Utilize our hands-on 4-H youth programs to enhance Pima County Public Health's early intervention education.
  - *Proposal: Expand and Enhance Tucson Village Farm School Program*



## Pima Extension Tucson Village Farm Schools Program reaches 5000+ youth annually



Healthy Living Ambassador Clubs reach and engage teens ages 12-18





THE UNIVERSITY OF ARIZONA

Cooperative Extension

Pima County

Proposal: Increase to 9000 youth, focus on teens, & create Healthy Living Ambassador 4-H clubs.



## Phase I

- 4000 more youth reached + new schools able to attend field trips to the farm.
- Grow the “Dig In” 3-12 grade programs and add targeted drug prevention healthy living materials to all programs.
- Pass through support to schools with limited field trip budgets
- As numbers grow, increase volunteers and student workers to maintain 7-1 ratios

## Phase II

- 2000 more middle and high school youth
- Develop and implement a Healthy Living Ambassador (HLA) training program for teens.
- Facilitate the creation of HLA clubs in middle and high schools across Pima County. Six schools have already inquired about this!



THE UNIVERSITY OF ARIZONA

Cooperative Extension

Pima County

## Pima County Cooperative Extension

*Research-based education to improve lives, families, communities, the environment, and economies.*

**Claire L. Zucker**

Director, Pima County Cooperative Extension, University of Arizona

(520) 869-8553

[clzucker@arizona.edu](mailto:clzucker@arizona.edu)

4210 North Campbell, Tucson, Arizona

[www.extension.arizona.edu/pima](http://www.extension.arizona.edu/pima)

