

**From:** [Donna Hoch](#)  
**To:** [GVC President](#); [District4](#); [COB\\_mail](#)  
**Cc:** [Donna Hoch](#)  
**Subject:** Cell Tower Vote, San Ignacio Golf Course, Green Valley, AZ  
**Date:** December 8, 2016 12:33:07 PM

---

Attention:  
Supervisor Carroll, GVC Architectural Committee and Pima County Supervisors,

It is important to note, that the photo sent out by Verizon representative Ms. Kim Allen on November 18th in preparation for the balloon float at San Ignacio Golf Course parking lot was inaccurate. The actual proposed site is along Desert Jewel Loop, not Camino del Sol. In fact the correct site is about 225 yds into the San Igancio Heights sub-division.

Desert Jewel Loop is not a road that is maintained by the county. Whenever possible, cell towers should be located along county maintained roads, not private streets.

As many of you may be relying on the graphics supplied by Verizon, I forward this corrected view. I am not certain if Verizon has informed you of the mistake. Look for the red "X" on the photo to locate the site that was rezoned as a possible site for this cell tower.

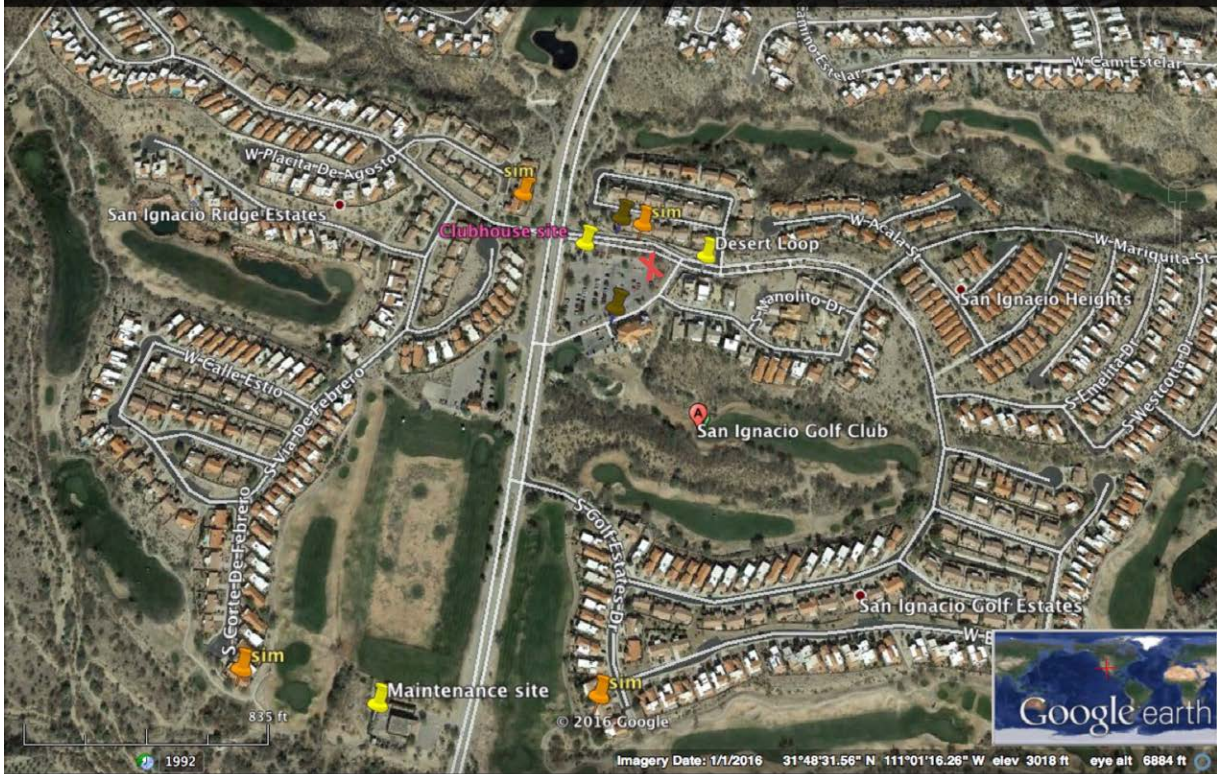
Ms. Allen's photo shows a yellow pin marking the site as being at the corner of Camino del Sol. There is a huge difference in those two parking lot sites. Homeowners would definitely prefer that should the cell tower end up in the parking lot, it be located along the main road through town.

I spoke with Ms. Allen the day the drone was flown. By that time she was aware that the corner site was incorrect, and she did have the drone flown from the correct site.

Thank you for reviewing this information prior to voting on this important issue.

Donna Hoch, SIH Cell Tower Chairperson

  
4161 S. Emelita Drive  
Green Valley, AZ 85622



**From:** [Donna Hoch](#)  
**To:** [GVC President](#); [District4](#); [COB\\_mail](#)  
**Cc:** [Donna Hoch](#)  
**Subject:** Cell Tower Vote, San Ignacio Golf Course, Green Valley, AZ  
**Date:** December 8, 2016 12:33:07 PM

---

Attention:  
Supervisor Carroll, GVC Architectural Committee and Pima County Supervisors,

It is important to note, that the photo sent out by Verizon representative Ms. Kim Allen on November 18th in preparation for the balloon float at San Ignacio Golf Course parking lot was inaccurate. The actual proposed site is along Desert Jewel Loop, not Camino del Sol. In fact the correct site is about 225 yds into the San Igancio Heights sub-division.

Desert Jewel Loop is not a road that is maintained by the county. Whenever possible, cell towers should be located along county maintained roads, not private streets.

As many of you may be relying on the graphics supplied by Verizon, I forward this corrected view. I am not certain if Verizon has informed you of the mistake. Look for the red "X" on the photo to locate the site that was rezoned as a possible site for this cell tower.

Ms. Allen's photo shows a yellow pin marking the site as being at the corner of Camino del Sol. There is a huge difference in those two parking lot sites. Homeowners would definitely prefer that should the cell tower end up in the parking lot, it be located along the main road through town.

I spoke with Ms. Allen the day the drone was flown. By that time she was aware that the corner site was incorrect, and she did have the drone flown from the correct site.

Thank you for reviewing this information prior to voting on this important issue.

Donna Hoch, SIH Cell Tower Chairperson

  
4161 S. Emelita Drive  
Green Valley, AZ 85622

**From:** [Donna Hoch](#)  
**To:** [GVC President](#); [District4](#); [COB mail](#)  
**Cc:** [Donna Hoch](#)  
**Subject:** Cell Tower at SAN Ignacio Golf Course  
**Date:** December 8, 2016 2:27:43 PM

---

Attention:  
Supervisor Ray Carroll, GVC Architectural Committee and Pima County Supervisors.

Topic:  
Possible cell tower sites at San Ignacio Golf Course.

According to Verizon's lawyer, Kim Allen, Verizon has determined that to have the cell tower located at the San Ignacio Golf Course Maintenance Shed it would need to be over 90 feet high, while placing it in the San Ignacio Golf Course parking lot would require a tower of 54 feet in height. Difference in elevation between the two sites has been the reason noted for the discrepancy in height.

According to Google Earth the elevation at the parking lot site is 3028 feet, while the elevation at the maintenance shed parking lot comes in at 3024 feet. That places the parking lot at the golf course at an elevation 4 feet lower than the maintenance shed.

Even factoring in a tower being built down in an arroyo 20ft. lower than the maintenance shed does not suggest a need for one site to require a tower 40ft higher than the other. Though the question has been raised, this difference in height has never been adequately explained to our residents.

Once Bob Jones was off the job, Kim Allen came on board. Unfortunately, Ms. Allen is a lawyer and not an engineer. Understandably, she was not able to speak to the "why" of this height difference, other than to tell us that 90+ft is what Verizon would require. So the discussion as to mitigating the height was just shut down to anyone bringing up the question.

What we did hear from Ms. Allen were the words, "The clock is ticking." While I understand that federal law requires that cell tower issues need be resolved in a timely manner, Verizon does have a responsibility to answer our questions in a forth right manner. Simply saying that "Verizon says it needs to be this high" or "The clock is ticking" does not shed any light on the questions being asked.

On another note, proximity to a private residence should play a major role in deciding where the cell tower can be place. The parking lot site has its

closest resident at just 128' away. While the maintenance shed site has its closest resident is almost three times further away at 335'.

Living within half a football field's distance to a cell tower brings multiple problems to residents. There will be generator noise from the tower that will be heard by nearby residents. Cases of this have been reported in California where neighbors were not able to keep windows open due to the incessant noise .

Lightning strikes are of major concern in Green Valley. We have had cases where palm trees have been struck by lightning, and have caused house fires as well as electrical problems for neighbors. Having a cell tower looming over ones home will place homeowners physically and financially in danger from possible fires generated from lightning strikes.

The cell tower proposed for the San Ignacio Heights Golf Course parking lot would not be built along a county or public road. It would be built along Desert Jewel, a road maintained by HOA's. In the attachments you can easily see the difference in road quality maintenance between Camino del Sol (county road) and Desert Jewel (private street).

Camino del Sol and the parking lot at San Ignacio golf course are in obvious need of repair. Desert Jewel is not. That raises the question, "If the cell tower is built at the proposed parking lot site, how much more traffic will be pushed onto Desert Jewel as the tower is being built and maintained? And how much are homeowners going to have to pay to keep having this road maintained as it is today?"

At the last community meeting at which Kim Allen spoke on behalf of Verizon she was asked which site is Verizon's preferred site? Naturally Verizon's preferred site is the one which will cost them least to build. Verizon's preferred site is not at issue here. Instead, finding a site that is suitable to maintain the aesthetics, property values and safety of a community is the issue.

I respectfully ask that you vote against placing a cell tower in the San Ignacio Parking Lot in Green Valley, AZ. If indeed, you feel that the parking lot is a viable alternative, then I ask that you strongly consider having Verizon and the parking lot owner agree to moving the tower further away from homes and to a location on Camino del Sol. There is room in the parking lot for these adjustments to be made.

Thank You,  
Donna Hoch, SIH Cell Tower Committee Chair

[REDACTED]  
4161 S. Emelita Drive  
Green Valley, AZ 85622  
[REDACTED]

Google Earth

**Camino del Sol (County Road)**

**Desert Jewel Drive**

**(Maintained by HOA's)**

Distance from tower  
to nearest residence  
**128'**



**Cell Tower Site**

**EL. 3028'**

Google Earth

Closest Home  
Vistas II. 1061'

Closest Home  
Ridge Estates  
335'

San Ignacio Inn

Maintenance Shed  
Site EL. 3024'



CAMINO DEL SOL (County Road)

© 2016 Google