



Contract number: CTN-FM-13 * 55-01
Effective Date: 10-15-13
Term Date: 1-31-16
Cost: 484,193.50
Revenue: 484,193.50
Total: _____ NTE: _____
Action: 11-1-15
Renewal By: EL
Term: 1-31-16
Reviewed by: EL

BOARD OF SUPERVISORS AGENDA ADDENDUM ITEM SUMMARY

Requested Board Meeting Date: October 15, 2013

ITEM SUMMARY, JUSTIFICATION &/or SPECIAL CONSIDERATIONS:

This First Amendment to Lease will expand the premises that Accelerate Diagnostics, Inc. leases at the Abrams Public Health building. The tenant improvement construction necessary for this expansion and the additional employees that will be hired by Accelerate will provide economic benefits to Pima County.

CONTRACT NUMBER (If applicable) CT FM 13*55

STAFF RECOMMENDATION(S):

Approve this First Amendment to Lease which will expand office space for a bio tech company and provide increased revenue to Pima County.

CORPORATE HEADQUARTERS: _____

Page 1 of 2

Ver. 2
Vendor. 1
Pg. 21

To: CHH - 10-10-1
CoB - 10-10-1
Agenda 10-15-
Addendum
(2)

DOCT1013PM04124PCCLN1500
Procure Dept 10/10/13 PM04107

CLERK OF BOARD USE ONLY: BOS MTG. _____

ITEM NO. _____

REVENUE TO PIMA COUNTY: \$84,193.50

COST TO PIMA COUNTY: \$000.00

FUNDING SOURCE(S): _____

(i.e. General Fund, State Grant Fund, Federal Fund, Stadium D. Fund, etc.)

Advertised Public Hearing:

		YES	X	NO
--	--	-----	---	----

Board of Supervisors District:

1		2	X	3		4		5		All	
---	--	---	---	---	--	---	--	---	--	-----	--

IMPACT:

IF APPROVED: Accelerate Diagnostics, Inc. will expand their offices, allowing them to hire additional bio-tech employees which will provide an economic benefit to Pima County.

IF DENIED: Accelerate Diagnostics, Inc. will not be able to expand their offices in the Abrams Public health building where their current staff and laboratory is located.

DEPARTMENT NAME: Facilities Management

CONTACT PERSON: Melissa Loeschen TELEPHONE NO.: 724-8230

PIMA COUNTY FACILITIES MANAGEMENT DEPARTMENT	
LEASE: 3950 S. COUNTRY CLUB ROAD, SUITE #470 TUCSON, ARIZONA	
TENANT: ACCELERATE DIAGNOSTICS, INC.	
LEASE NO.: CTN FM 13*55	
LEASE AMENDMENT NO.: ONE (1)	

CONTRACT	
NO. <u>CTN-FM-130000000000000000</u> 55	
AMENDMENT NO.	<u>01</u>
This number must appear on all invoices, correspondence and documents pertaining to this contract.	

ORIGINAL LEASE TERM:	01/13/13-01/12/16	ORIG. LEASE AMOUNT:	\$418,914.00
TERMINATION DATE PRIOR AMENDMENT:	NA	PRIOR AMENDMENTS:	\$0.00
TERMINATION THIS AMENDMENT:	01/12/16	AMOUNT THIS AMEND.:	\$84,193.50
		REVISED AMOUNT:	\$503,107.50

FIRST AMENDMENT TO LEASE

- A. Pima County ("County" or "Landlord") and ACCEL8 TECHNOLOGY CORPORATION, a Colorado corporation ("Accelr8"), entered into a lease agreement dated August 20, 2012 (the "Lease"), pursuant to which the County leased space in a county-owned building (the "Building") to ACCEL8. The Commencement Date of the Lease occurred on January 3, 2013.
- B. After execution of the Lease Accelr8 converted to a Delaware corporation and changed its name to Accelerate Diagnostics, Inc.
- C. The Lease provides, in Section 1(c), that Tenant can expand into either or both of two additional areas of the Building, as shown on Exhibit B of the Lease.
- D. The Option Space A consists of 4,332 usable sq. ft. Tenant has expressed a desire to occupy Option Space A.
 1. **SUCCESSOR ENTITY.** Accelerate Diagnostics, Inc., a Delaware corporation, hereby acknowledges that it is the successor-in-interest of Accelr8 and is the Tenant under the Lease.
 2. **MODIFICATION OF LEASE.** Landlord and Tenant hereby agree to modify the terms of the Lease as set forth in this Amendment. Capitalized terms not otherwise defined in this Amendment have the meanings set forth in the original Lease. This Amendment will be effective when approved and executed by both parties.
 3. **EXPANSION OF PREMISES.** The "Premises" under the Lease is hereby expanded to include the Option Space A, a custodial room that consists of 40 useable sq. ft., a storage closet that consists of 49 useable sq. ft. and an IT/server room that consists of 130 useable sq. ft., all on the 4th floor of the Building, as shown on Exhibit A to this Amendment (the "Expansion Space"). The addition of the Expansion Space increases the usable square footage of the Premises from 15,096 to 19,647. Tenant may occupy the Premises after substantial completion of the Option Space A Tenant Improvements as provided below.

4. **TENANT IMPROVEMENTS.** Landlord will build out Option Space A as shown on Exhibit B and will provide the furnishings (the "Option Space A Tenant Improvements").
5. **RENT.** Tenant will begin paying rent for the Expansion Space, at the rate set forth in Section 6 of the Lease, and making the tenant improvement reimbursement payments as provided in Section 6 below, on the date that Landlord receives a Certificate of Substantial Completion for the Option Space A Tenant Improvements.
6. **TIREIMBURSEMENT.** Tenant will pay Landlord for the actual cost of the Option Space A Tenant Improvements, up to a maximum amount of \$400,000.00, plus interest at the rate of 4% annually, in equal monthly installments amortized over the remaining term of the Lease, which is anticipated to be twenty-four (24) months after substantial completion of the Option Space A Tenant Improvements. Landlord will, upon substantial completion of the Option Space A Tenant Improvements, notify Tenant of the amount of this monthly payment.
7. **PARKING.** Section 1b of the Lease is hereby modified as follows:

FROM: Tenant shall be entitled to use the number of parking spaces required for the Premises by applicable zoning based upon Tenant's use. One space, per full time employee working for Tenant at the Premises, will be reserved for Tenant's exclusive use, through posted signage provided by Landlord. Landlord will not police the parking to ensure that Tenant's spaces are not used by others. If, during the Term, Landlord builds a parking garage on the Kino public health campus, Landlord may require Tenant's employees to utilize that parking garage. There will be no charge for use of the garage by Tenant's employees during the Initial Term. During the Extension Terms, Tenant will pay a monthly parking fee of \$50.00 per space in such parking garage.

TO: Tenant will be entitled to use the number of parking spaces required for the Premises by applicable zoning based upon Tenant's use. Tenant's employees will park in the unassigned spaces in the employee-designated area of the parking lot as shown on Exhibit C. Tenant's visitors will park in the visitor section of the parking lot. If, during the Term, Landlord builds a parking garage on the Kino public health campus, Landlord may require Tenant's employees to utilize that parking garage. There will be no charge for use of the garage by Tenant's employees during the Initial Term. During any Extension Term all of New Tenant's employees will pay a monthly parking fee of \$50.00 per space in the parking garage.

8. **HVAC.** Section 7(h)(i) of the Lease is hereby modified as follows:

FROM: Heating, ventilation and air conditioning services ("HVAC") will be provided to the Premises from 6 A.M. to 6 P.M. Monday through Friday, and from 6 A.M. to noon on Saturdays. If Tenant requires heating, ventilation or air conditioning services at any time other than those hours, Tenant must submit request for service to Pima County's Director of Facilities Management or his designee, at least 24 hours in advance of the desired date. The request may be oral. Tenant will pay Landlord an hourly fee for this additional service. The amount of the fee will be based on actual

energy costs incurred to provide the additional HVAC, and it may be adjusted by Landlord from time to time during the Term.

TO: Landlord will provide heating, ventilation and air conditioning services ("HVAC") to the Building 24 hours a day, 7 days a week, 365 days per year.

9. **INSURANCE.** In addition to the insurance that Tenant is required to provide to Landlord as stated in Section 10 of the Lease, Tenant will provide proof of liquor liability insurance in the amount of \$2,000,000.00.

10. **FURNISHINGS.** The equipment provided by Landlord for use in the original premises, as stated in Section 15 of the Lease, is described in Exhibit D.

THE REMAINDER OF THIS PAGE IS INTENTIONALLY LEFT BLANK.

IN WITNESS WHEREOF, the parties hereto have executed this Lease as of the day, month and year written below.

LANDLORD:

PIMA COUNTY, a political subdivision of the State of Arizona

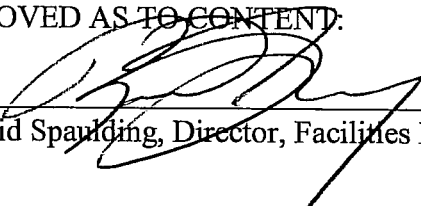
Chairman, Board of Supervisors

Date _____

ATTEST:

Clerk of the Board

APPROVED AS TO CONTENT:

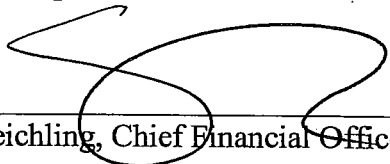
By: 
Reid Spaulding, Director, Facilities Management

APPROVED AS TO FORM:

By: 
Deputy County Attorney

NEW TENANT:

ACCELERATE DIAGNOSTICS, INC.
a foreign corporation



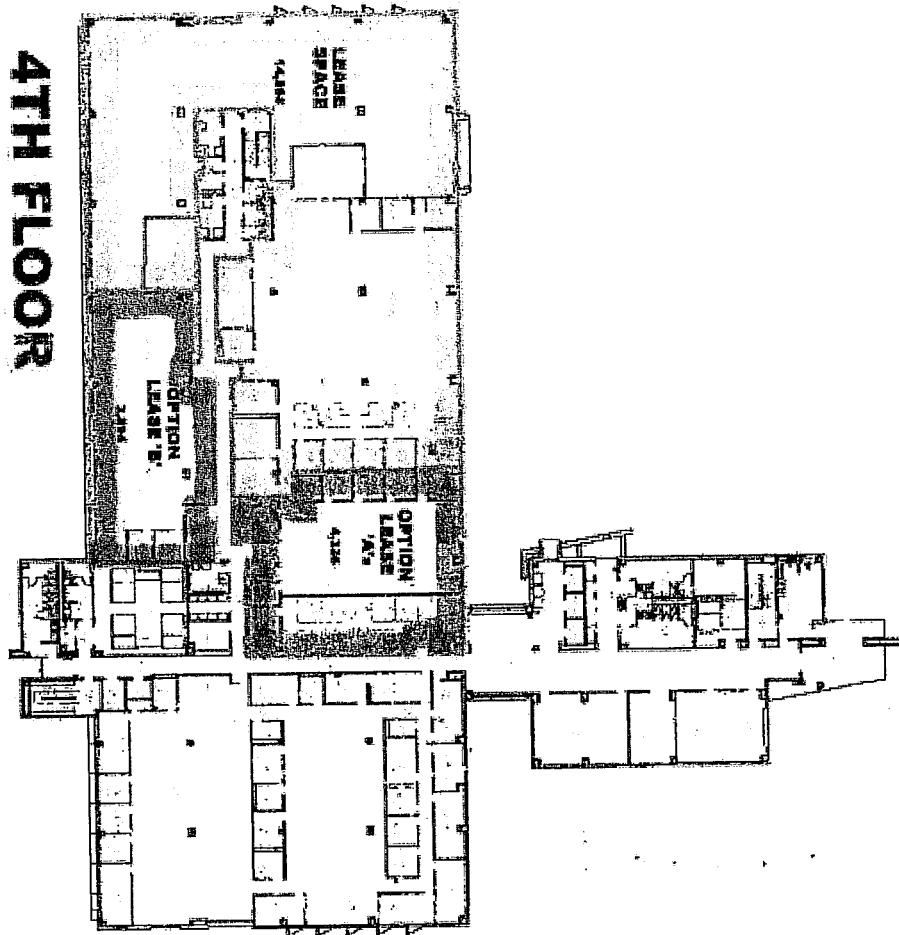
Steve Reichling, Chief Financial Officer

Date 10/10/13

Exhibits:

- Exhibit A: Option Space "A" from Lease.
- Exhibit B: Option/Expansion Space "A" floor plan
- Exhibit C: Parking Diagram
- Exhibit D: Furniture & Equipment Provided by Landlord

Exhibit A



PIMA COUNTY FACILITIES MANAGEMENT, 150 WEST CONGRESS, TUCSON ARIZONA 85701 (520) 724-3085

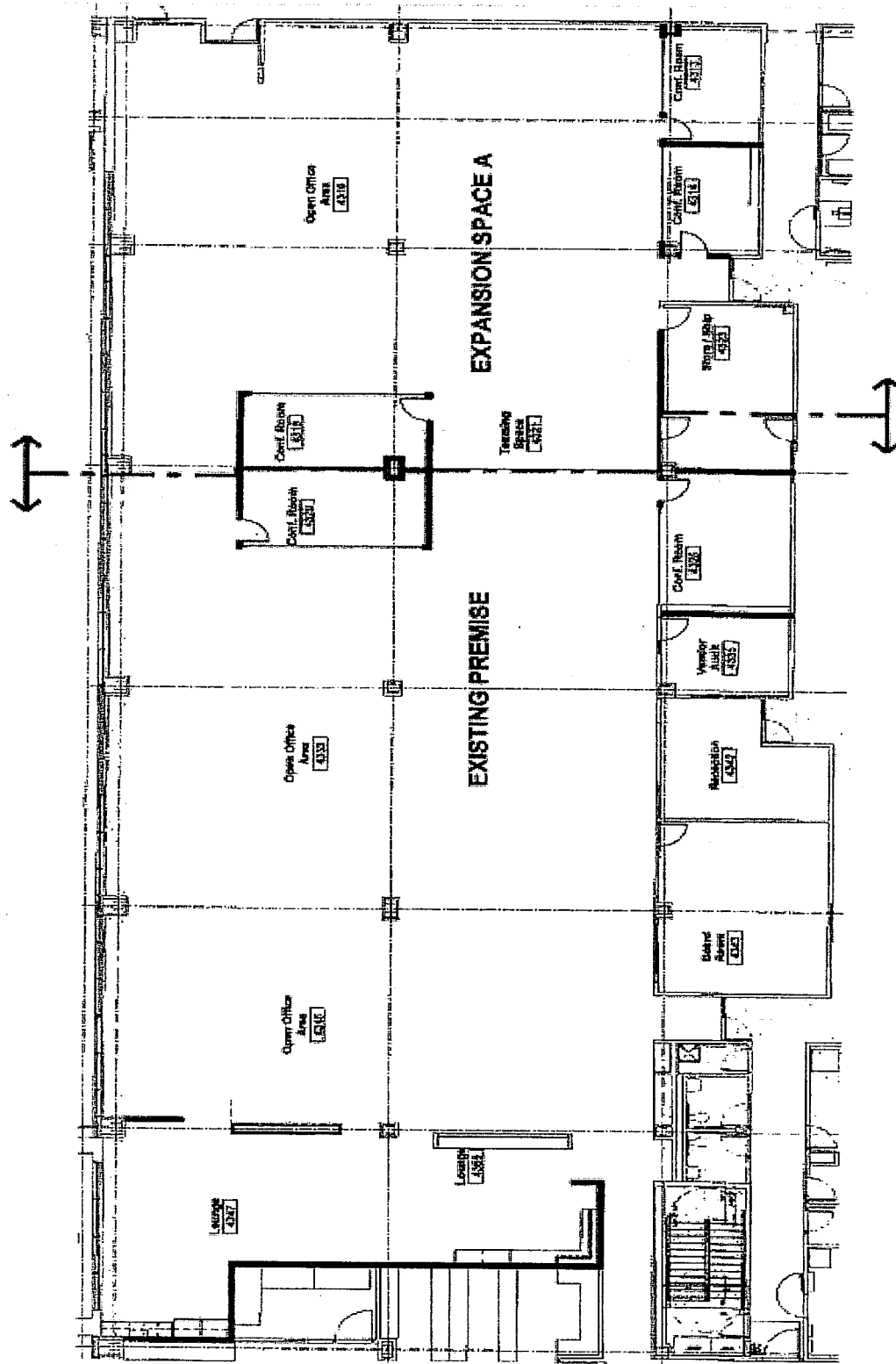
PIMA COUNTY
FACILITIES
MANAGEMENT
4TH FLR
150 W
CONGRESS
TUCSON
AZ 85701

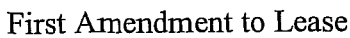


HERBERT H. ABRAMS PUBLIC HEALTH BLDG
3220 S. COUNTRY CLUB ROAD
TUCSON, AZ

FACILITIES MANAGEMENT
POTENTIAL OCCUPANCY

Exhibit B



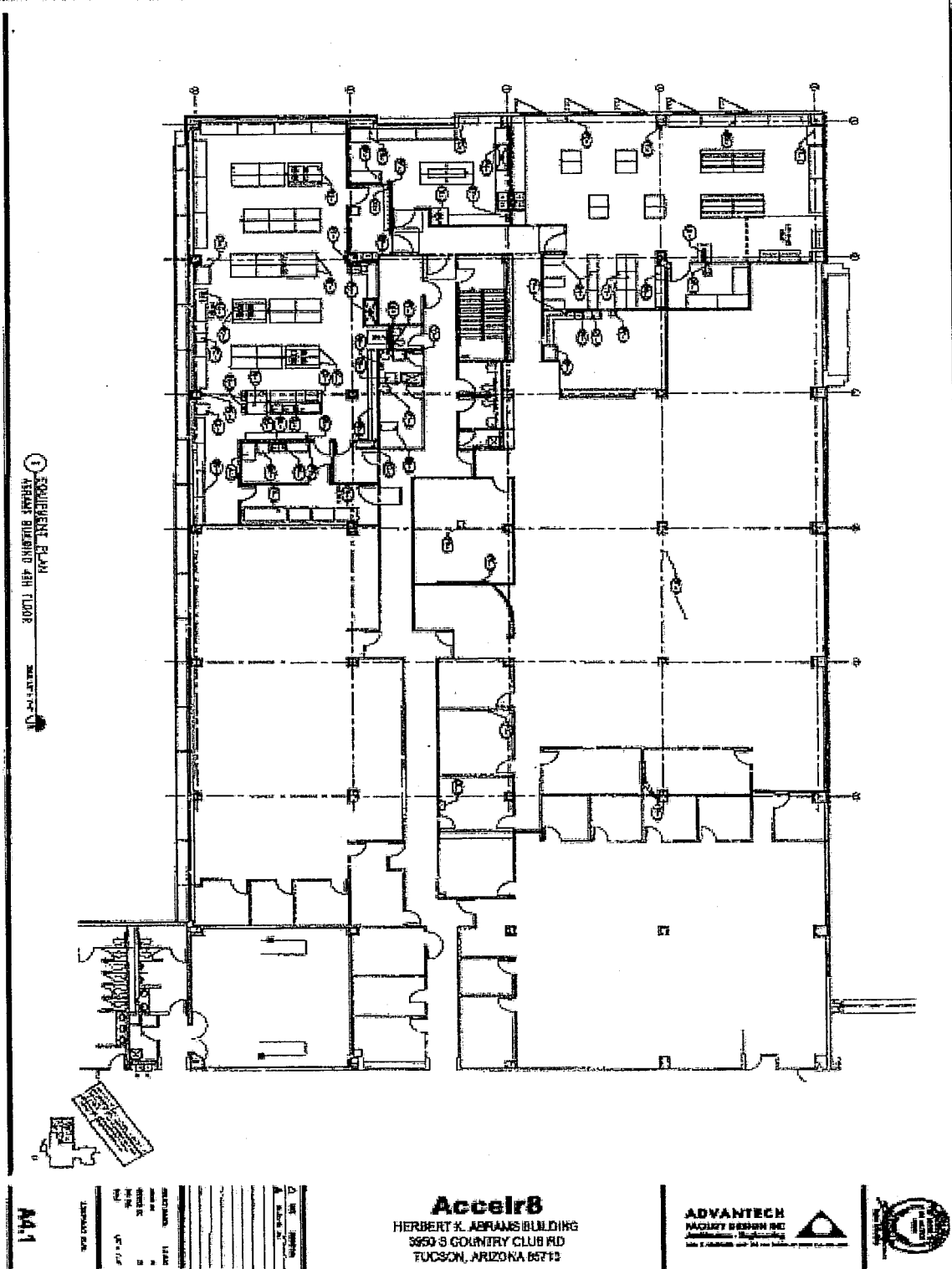


GREEN – CONTRACTOR PARKING (SOUTH EAST CORNER)

Exhibit D
Furniture Provided by Landlord

Part Number	Part Description	Order Number	Location	New or Use
HAO 10	AQ215.27		Open Offices	AIM
HAO 4	AO215.46		Open Offices	AIM
HAO 4	A1322.08E		Open Offices	AIM
HEI 1	E1109.3624X		Receipt	AIM
HEI 1	E1109.3624X		Receipt	AIM
HEI 2	E1354.24E		Receipt	AIM
HEI 1	E1354.46E		Receipt	AIM
HEI 1	E1120.36		Receipt	AIM
HAO 10	AQ215.27		Open Offices	AIM
HAO 3	AQ215.80		Open Offices	AIM
HAO 26	A1311.A		Open Offices	AIM
HAO 13	A1311.B		Open Offices	AIM
HAO 22	A1311.C		Open Offices	AIM
HEI 2	E1260.36S		Receipt	AIM
HEI 2	E1311.A		Receipt	AIM
HEI 1	E1311.C		Receipt	AIM
HEI 1	E1420.1648P		Receipt	AIM
HAO 3	A1271.53H		Open Offices	AIM
HAO 3	A1271.53H		Open Offices	AIM
HAO 40	Y2091.L		Open Offices	MOVE
HAO 78	A2310.2442L		Open Offices	MOVE
HAO 40	A2310.2442L		Open Offices	MOVE
HAO 13	A2310.2442L		Open Offices	MOVE
HFS 1	05130.19		Receipt	MOVE
HFS 1	05130.19		Receipt	MOVE
HST 4	AE113AWA		C1	Move
HST 40	AE113AWB		C1	Move
HST 15	AE113AWC		C1	Move
GDM 10	Shim-P-AQVETHO			New
GDM 3	Shim-P-AQVETHO			New
HAO 7	A1120.6324G		Open Offices	New
HAO 63	A1120.6330N		Open Offices	New
HAO 38	A1120.6330N		Open Offices	New
HAO 3	A1120.6336G		Open Offices	New
HAO 4	A1120.6336G		Open Offices	New
HAO 30	A1120.6346N		Open Offices	New
HAO 65	A1120.6346N		Open Offices	New
HAO 34	AO213.40		Open Offices	New
HAO 92	AO213.40		Open Offices	New
HAO 33	A1230.63H		Open Offices	New
HAO 33	A1230.63H		Open Offices	New
HAO 10	A1240.63H		Open Offices	New
HAO 10	A1240.63H		Open Offices	New
HAO 3	AO272		Open Offices	New
HAO 15	A1322.12E		Open Offices	New
HEI 3	E1260.24S		Open Offices	New
HEI 3	E1260.24J		Open Offices	New
HEI 1	E1263.46J		Open Offices	New
HEI 1	E1263.46J		Open Offices	New
HEI 1	E1116.3646N		Receipt	New, now in AIM
HEI 1	E1117		Receipt	New, now in AIM
HEI 1	E1220.36SSE		Receipt	New, now in AIM
HEI 1	E1220.36SSN		Receipt	New, now in AIM
HEI 2	E1221.36S		Receipt	New, now in AIM
HCE 4	E1420V.1624B		Receipt	New, now in AIM
HCE 1	E1420V.1648B		Receipt	New, now in AIM
HEI 4	E1420.1624P		Receipt	New, now in AIM
HEI 4	E1422.1824		Receipt	New, now in AIM
HEI 4	E1422.1824		Receipt	New, now in AIM
HEI 1	E1442.1846N		Receipt	New, now in AIM
HEI 1	E1442.1846N		Receipt	New, now in AIM
HEI 2	E2369.24R		Receipt	New, now in AIM
HEI 2	E2369.24R		Receipt	New, now in AIM
HEI 1	E2210.2448L		Receipt	New, now in AIM
HEI 1	E2212.3346L		Receipt	New, now in AIM
HCE 1	ZEOLA		Receipt	New, now in AIM
HGN 12	DT1AS.2469LC		T1a	New
HGN 8	DT1AS.3060LC		T1b	New
HGN 3	DT1BS.4242LC		T2	New
HGN 4	DT1BS.3636LC		T3	New
HST 36	CO51MA		C2	New
HST 15	WC410N		C3	New
HST 4	SA299341		C3	New
HST 4	UTB3P.3		C3	New
MITY 36	MO5CA		C6	New
MITY 36	UREIGHT-IN		C6	New
REPAIR 24	Field Out			New
REPAIR 24	Field Out			New
SVCPART 308	Tog			New
SVCPART 33	SA38.1378			New
DELINS 1	Installation			New
FMS 1	46-3615-OB-26			New
FMS 1	46-4215-OB-26			New
FMS 1	46-3615-OB-42			New
FMS 1	46-4215-OB-42			New
FMS 1	46-3615-OB-66			New
FMS 1	46-4215-OB-66			New
MEX 1	M16-1522-BBF			New
MEX 1	M16-1522-BBF			New
MEX 1	F16-1522-BBF			New
PDA 1	36-3600-3N			New
HAO 1	A3610			New

Exhibit D **Equipment Provided by Landlord**



Accelr8
HERBERT K. ABRAMS BUILDING
3650 S GOUNTRY CLUB RD
TUCSON, ARIZONA 85713

ADVANTECH
FACILITY DESIGN INC.
Architecture • Engineering
1000 N. GILBERT AVE. SUITE 200 TUCSON, ARIZONA 85710



DR. JEFFREY A. KATZ
1175 W. 10th Street
Anchorage, Alaska 99501
Phone: 266-2222
Fax: 266-2222

DT: - not used
 DT: - not used
 DT: - not used



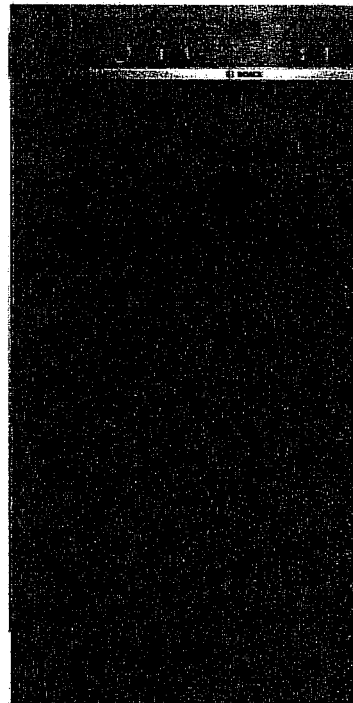
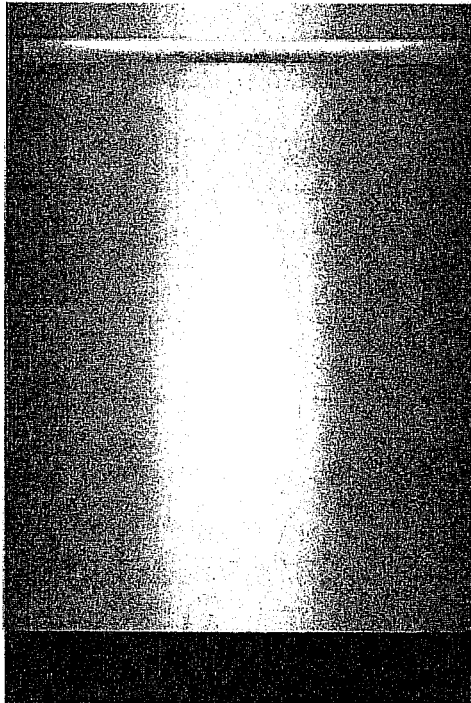
1-800-368-5848
 Fax: 800-368-5848
 Web: www.368.com

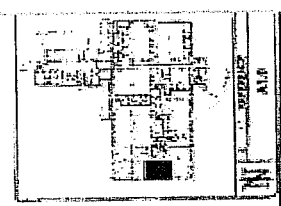
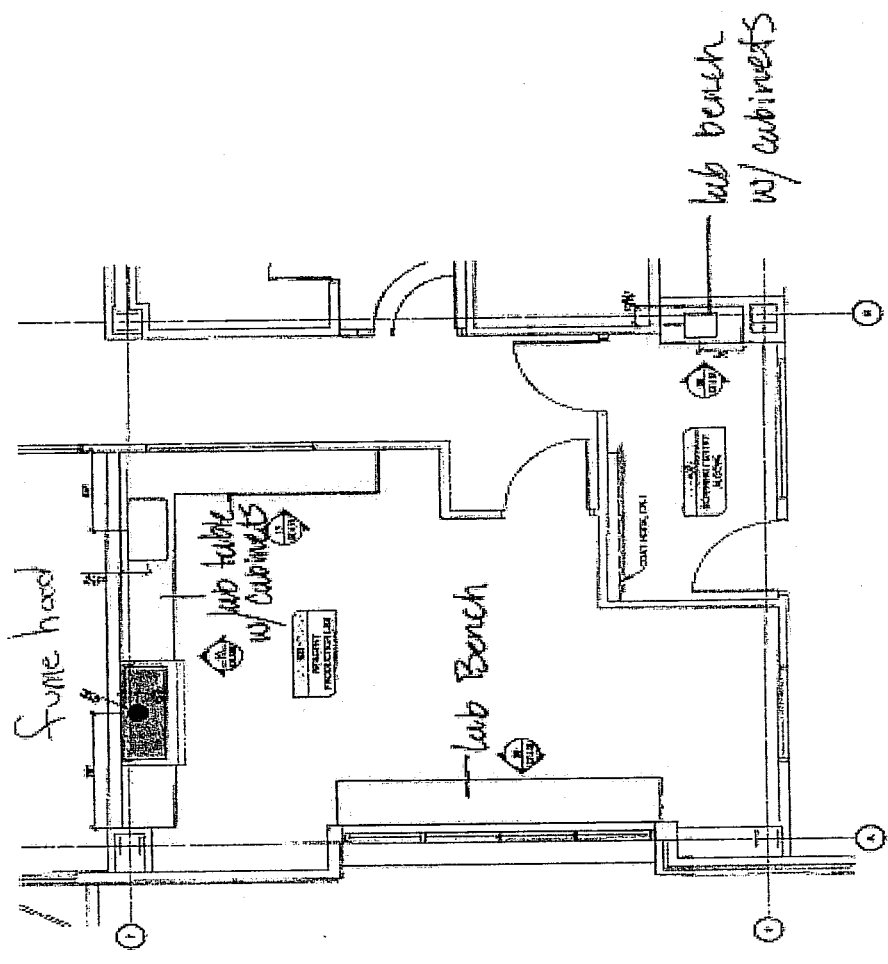
ADVANTECH
FACILITY DESIGN INC.
Arlinghouse, Englewood,
Ill. 60014-1000



Advis

DW-2 Dishwasher-Breakroom Bosch Ascenta





Isec	1500 Project Center Charlie Fortson Project Manager Tucson, AZ 85713 Phone: (520) 455-1111	Project Name Accelr8 Project Location Tucson, AZ 85713	 Feet and inches scale not visible on this page. Please refer to the scale on the back of the drawing.	Project Number 123212	Drawing Title Plan For Rooms 407 & 408	Drawing Number 11092012	Drawing Date CP-4.02
				Project Size 3116' = 1"	Drawing Scale 1/8" = 1'-0"	Drawing Date 11/09/2012	Drawing Date CP-4.02

Supreme Air Fume Hood Construction

The design is based on rigid frame construction that assures a solid installation and low vibration and sound levels. Access panels are easily removable to access service lines and fittings. Radius corner posts and airfoils, plus, easy operator control of interior baffle settings assure a high level of comfort, safety and efficiency. Given the variety of models available and the comprehensive option packages to be selected,

this new generation of fume hoods can be tailored to the application needs of your modern laboratory. Aesthetically pleasing curved airfoils, vision sash panels, contemporary controls and devices, designer colors and combinations make a hard-working laboratory safety device into an attractive part of the total laboratory environment.

Energy saving lighting with exterior relamping

- Single bulb, low profile T5 fluorescent light fixture
- Optional special purpose lighting

Task specific liner options

- Phenolic resin
- Kemglass
- KMER
- Type 304 Stainless Steel
- Low profile, self-gasketing, interior access panel — removable without tools

Customizable accessory offering

- A full array of service fittings and electrical fixtures
- Monitoring and safety alarms
- Pre-piping and pre-wiring
- UL listed when pre-wired per UL 61010A-1
- UL 1805 classified with Kemglass or Stainless Steel liner

Low profile PVC sash tracks

- Smooth sash operation
- Reduced air turbulence
- Seals the interior side panel

Easy operating full vision sash with:

- Full length painted aluminum handle for neat, clean appearance and streamline air features
- Exclusive sash leveling and alignment features

Top front panel available as:

- Solid panel with integral louvers
- Vision panel with integral louvers (shown)
- Solid panel with Sight-tight Chevron by-pass grille
- Vision panel with Sight-tight Chevron by-pass grille



Independent frame construction

- Rigid structural frame
- Allows liner panel replacement
- Stainless steel fasteners concealed with corrosion resistant caps

Narrow-radius corner posts

- Enhances aerodynamic air flow
- 4" width creates more interior work space

Radiused air foil

- Streamline air flow — low turbulence
- Heavy gauge steel for durability
- Available painted or in stainless steel

Exclusive Kemresin work tops

- Dished worksurface available in multiple colors
- Many other options, including stainless steel

Foodservice Equipment • Material Handling, Healthcare & Cleanroom Equipment • Retail Display

Wall Shelves with Racks



Item #: CR-1
Model #: WSP12120
Project #: 12B212
SIS #:

Optional Accessories	Model #	Qty
Additional pot hooks		



Wall shelf with rack

- Rack is type 304 stainless steel.
- Shelf is 16 gauge type 430 stainless steel.
- 1½" (38mm) roll on front.
- 1½" (38mm) upturn on rear and ends.
- Provided with double-pronged pot hooks.

Spec. sheets available for viewing, printing or downloading from our online literature library at www.eaglegrp.com



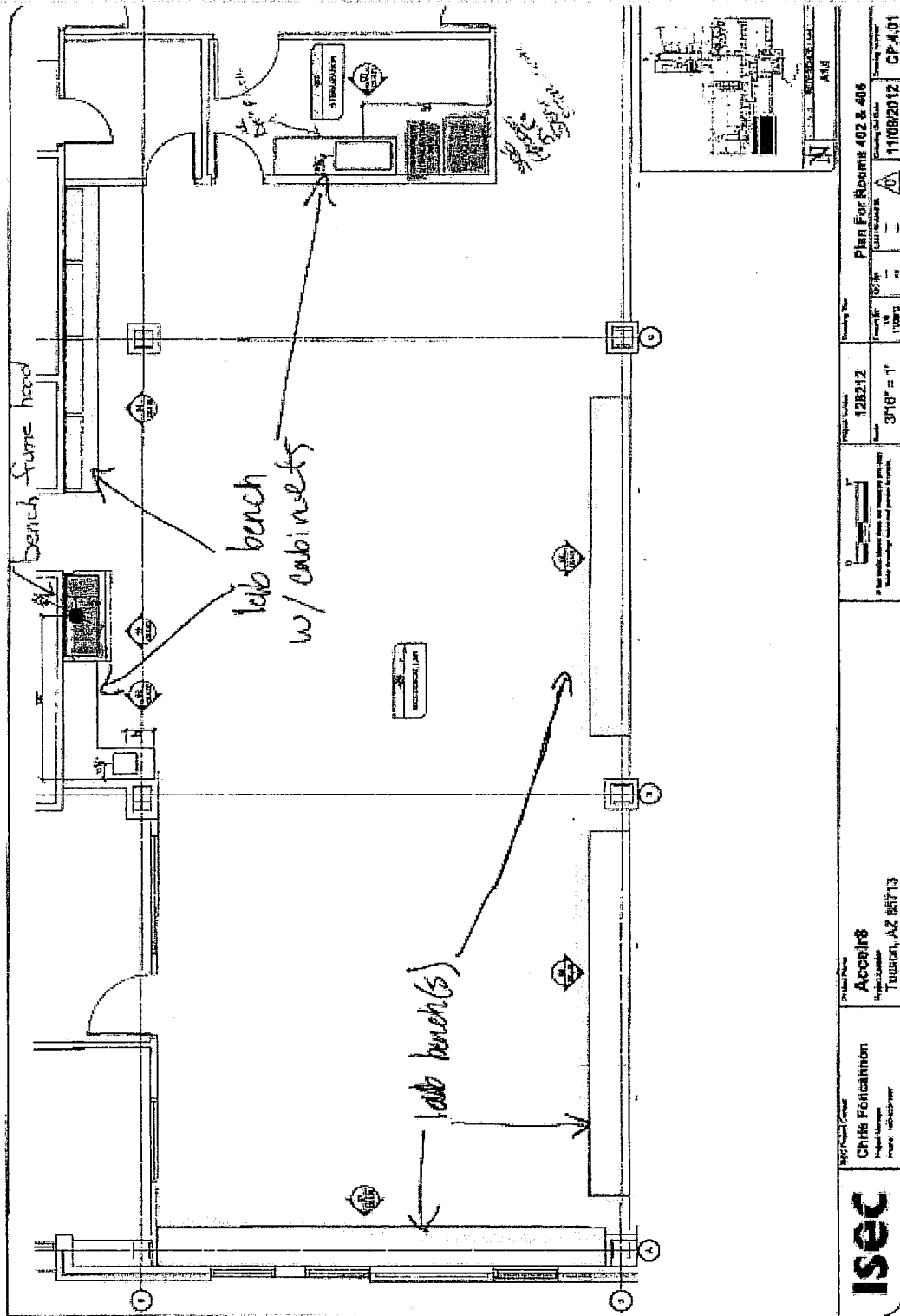
Foodservice Division: (800) 441-8440
MHC/Retail Display Divisions: (800) 637-5100
FAX: (302) 653-2055 or 653-3036

For custom configuration or fabrication needs,
contact our SpecFab Division.
Phone: (302) 653-3000, FAX: (302) 653-3091.
E-mail: specfab@eaglegrp.com

100 Industrial Boulevard • Croydon, DE 19936-8903 USA • (302) 653-3000 • www.eaglegrp.com

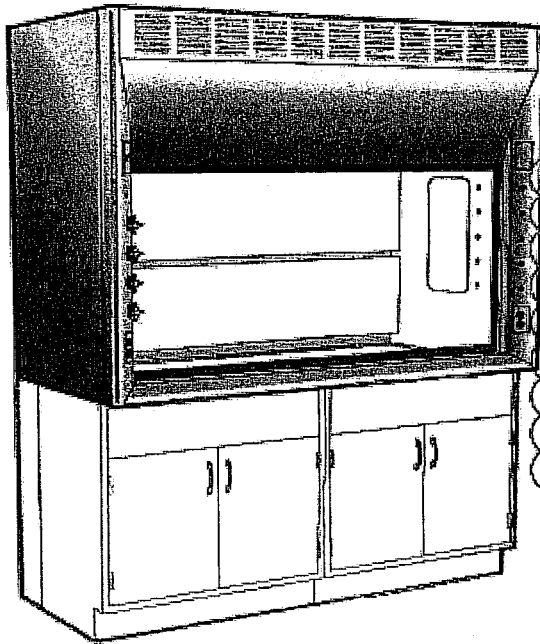
Eagle Foodservice Equipment, Eagle MHC, SpecFab, and Retail Display are divisions of Eagle Group. ©2005 Eagle Group

EG10.14 Rev. 01/05



General Purpose Bench Fume Hood

with Vertical Rising Sash



Available Models:

Open By-Pass
Restricted By-Pass
Auxiliary Air

Labconco Protector Premier Exhaust Data (for comparison to Kewaunee fume hood):

Total Exhaust CFM and Static Pressure
@ 28" Sash Opening (100% Open)

Face Velocity (ft/min)	Airflow Volumetric Rate (CFM) @ Static Pressure (inches of water)			
	4' Hood		6' Hood	
Sash # Full Open (28")	CFM	s.p.	CFM	s.p.
100	725	0.22	955	0.31
80	580	0.14	750	0.20
60	435	0.08	575	0.10

Available Options:

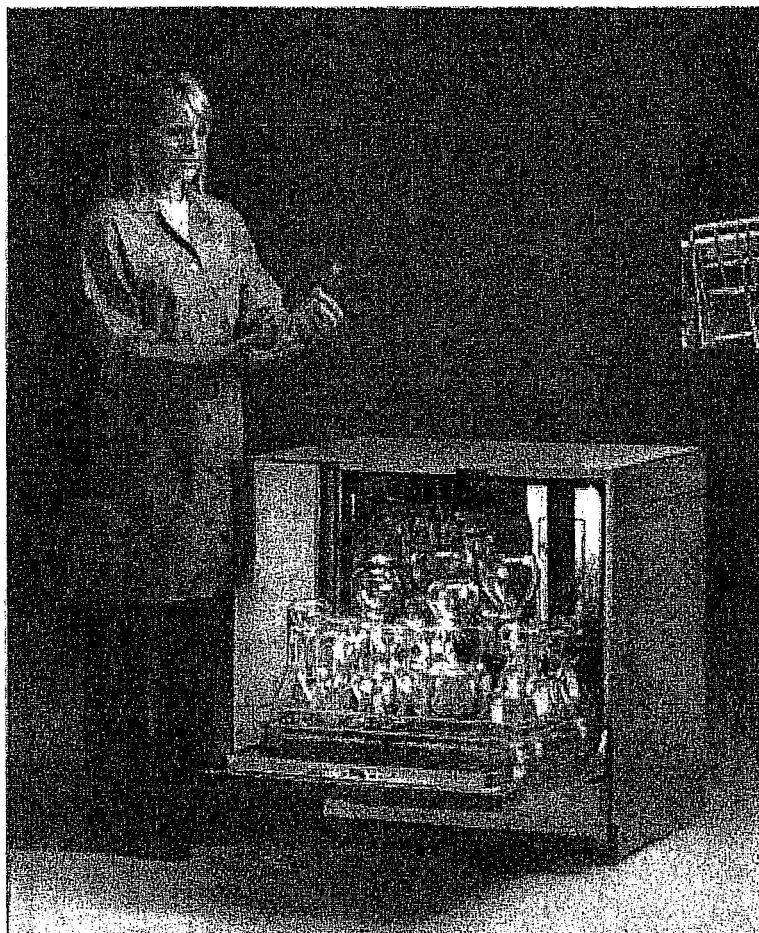
- Adjustable Baffles
- Air Flow and Static Pressure Alarms
- Service Fittings and Piping
- Electrical Fixtures and Wiring
- UL listed when pre-wired per UL 61010A-1
- 1805 UL classified with Kemglass
- or Stainless Steel liner
- Vapor Proof and Explosion Proof Lighting
- Stainless Steel Deflector Vane
- Alternate Sash Handles
- Sash Frames
- Tempered Sash Glass
- Tissue Screen
- Fire Extinguisher
- Distillation Rack
- Sash Stop
- Stainless Steel Duct Collar

Features:

- Radiused corner posts and airfoils for smooth air movement assures high level of comfort, safety and efficiency.
- 4" thick endwalls provide more interior work space and clean-lined uncluttered design.
- Interior baffles designed to minimize turbulence and optimize containment.
- Frameless sash with full-length formed steel handle for neat, clean appearance and streamline air features.
- Low profile PVC sash tracks and exclusive sash leveling and alignment features assure easy-smooth sash operation.
- Large friction-fit interior access panels provide easy access to piping and service fittings.
- Heavy gauge cold rolled steel exterior panels with independent rigid structural frame.
- Designed and tested using ASHRAE 110-1995, BS 7258, and DIN 12924 standards.

FlaskScrubber® & SteamScrubber® Laboratory Glassware Washers

OVERVIEW



Left: The FlaskScrubber® Younger Series Laboratory Glassware Washer has advanced features for sanitizing and controlling contaminants, including water conductivity sensor, HEPA filtered drying and BS 272 port. The washer includes a lower spindle rack with option for an upper rack.

Insert: Upper standard open and spindle racks feature side release latches allowing racks to be easily lifted out for unloading or exchanging with another upper rack.

Flexibility, durability, maximum cleanability and energy-efficiency have been engineered in to every Labconco laboratory glassware washer.

Flexibility

Labconco offers two distinct washer types for different glassware mixes: the SteamScrubber and the FlaskScrubber. Designed primarily to hold general glassware such as beakers, utensils, test tubes, Petri dishes and BOD bottles, the SteamScrubber comes with upper and lower standard open racks that accommodate a wide variety of baskets and inserts.

Designed primarily to hold narrowneck glassware such as volumetrics and Erlenmeyer flasks, the FlaskScrubber has a lower rack with 36 spindles and may be outfitted with specialized inserts to accommodate pipets. Although the SteamScrubber and FlaskScrubber are distinct in their primary uses, the standard open racks and spindles racks are *interchangeable* making these washers more flexible and versatile than ever before. If your glassware mix currently includes both narrowneck and general glassware or changes in the future, just add the racks and inserts you need to accommodate your needs.

Amsco[®] Lab Series Small Steam Sterilizers

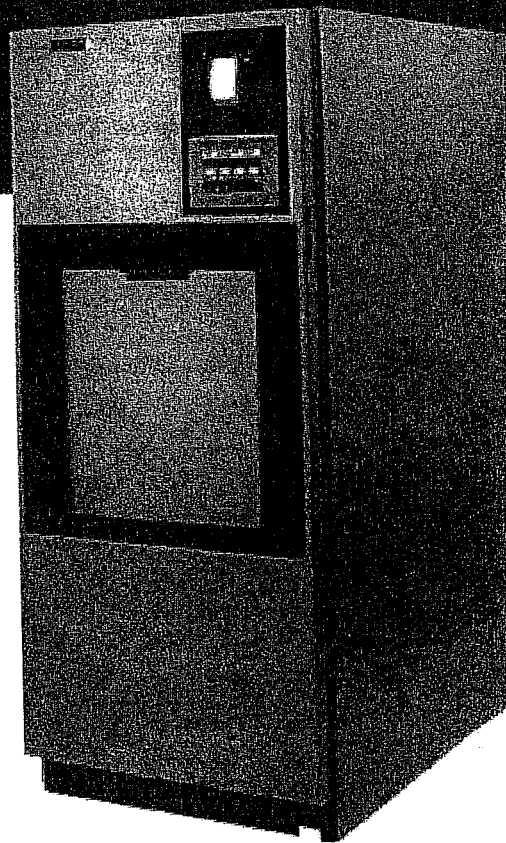
Maximum Reliability, Performance,
and Value

The Amsco Lab 110 and Lab 250 sterilizers were designed with the needs and the budget of the laboratory research market in mind. The Lab Series sterilizers provide the same time-proven, safe, and reliable chamber and stand assembly as the Century[®] sterilizer that has been offered to the healthcare and life sciences markets since 1992.

The Lab 110 and Lab 250 feature an Allen-Bradley MicroLogix[™] control and a full-color operator interface. The unit is equipped with gravity and liquid type cycles as standard. Optional prevacuum and isothermal cycles are also available if required. A manually operated vertical sliding door is combined with the non-lubricated door seal for reliability and ease of use. The drain line piping package meets or exceeds the maximum water temperature requirements of the industry - 60°C (140°F).

Easy to Use and Reliable

- The manual vertical sliding door opens and closes with minimal effort.
- Our unique door seal never needs lubrication and is warranted to last two years without replacement. The specially machined groove assists in extending seal life.
- Sliding shelves are sleeved in Teflon[®] for smooth movement.
- The entire rack system is removable for easy cleaning.
- Reliable Allen-Bradley MicroLogix[™] 1200 PLC control system is tested to meet all applicable code requirements and standards for industrial application.
- The process control system provides continuous cycle monitoring and control, as well as service diagnostics.
- Modularized piping with fewer component connections reduces maintenance and simplifies service.

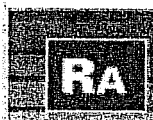


The Lab 110 and Lab 250 sterilizers offer full range of processing cycles, including the standard gravity with liquid cycle plus optional prevacuum and isothermal cycles.

STERIS[®]



Life Sciences



Racks

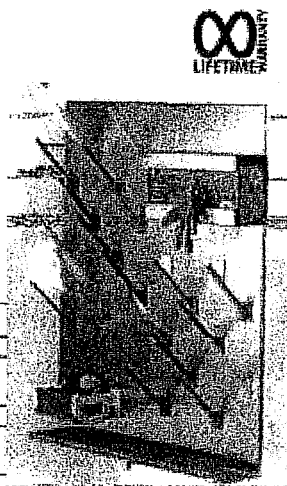
DR-1 Drying Rack

Modular Drying Racks, 304 SS

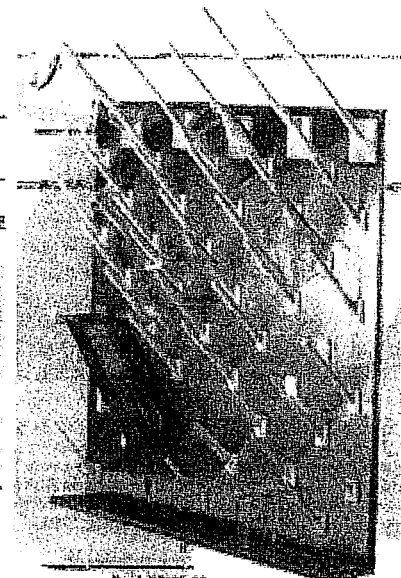
- Removable "snap-in" pegs and add-on accessories let you turn these drying racks into customized work stations in just seconds!
- Corrosion-resistant 304 stainless steel (SS) racks and polypropylene pegs are easy to clean. Autoclavable.
- Integral catch drain directs all drainage into the drip trough—prevents accidental drainage to the back of the rack.
- Racks come with 6"L pegs, SS drain tube, and wall mounting bracket. Order add-on accessories, plugs, and additional pegs below.

Catalog number	Color of pegs included	Price/ea
20" deep racks measure 24"W x 30"H x 4"D		
R-67035-00	White	
R-67035-01	Assorted*	
R-67035-02	Black	
30" deep racks measure 30"W x 30"H x 4"D		
R-67035-10	White	
R-67035-12	Assorted*	
R-67035-14	Black	
40" deep racks measure 36"W x 30"H x 4"D		
R-67035-20	White	
R-67035-22	Assorted*	
R-67035-24	Black	

*Assorted peg colors include yellow, orange, pink, red, green, light blue, dark blue, flat, and purple.



Rack 67035-02 shown with drain basket and glove dispenser



Rack 67035-10 shown with pipette rack and screen insert

Add-On Accessories, 304 SS

These accessories include the necessary "snap-in" support pegs to quickly and easily attach to the rack. Drain basket holds small items such as stir bars, stoppers, and pipette tips. Drain shelf is ideal for drying and storing various glassware items. Pipette rack hangs at an angle to allow for complete drainage of pipettes. Funnel rack holds four funnels, volumetric flasks, or small cylinders. Cylinder yoke holds two cylinders. Flask holder accepts one large flask, cylinder, or separatory funnel. Glove dispenser provides a convenient spot for one box of gloves. Screen inserts fit into the drip trough and increase the drying capacity of the rack.

Catalog number	Description	Price/ea
R-67035-70	Drain basket, 6"W x 2 1/2"H	
R-67035-71	Drain shelf, 14"W	
R-67035-72	Pipette rack, 12"W	
R-67035-73	Funnel rack, 14"W	
R-67035-74	Cylinder yoke, 14"W	
R-67035-75	Flask holder, 8"W	
R-67035-76	Glove dispenser, 10"W x 5 1/2"H	
R-67035-77	Screen insert, 24"W	
R-67035-78	Screen insert, 30"W	
R-67035-79	Screen insert, 36"W	

Plugs and Pegs, Molded Polypropylene

Removable "snap-in" plugs and pegs come in packs of six.

Catalog number	Description	Price/pk
R-67035-79	White hole plugs	
R-67035-80	White hole pegs, 4"L x 3/8" dia	
R-67035-81	White hole pegs, 5"L x 3/8" dia	
R-67035-82	White long pegs, 12"L x 3/8" dia	
R-67035-83	Replacement white pegs, 6"L x 1/2" dia	
R-67035-84	Replacement black pegs, 4"L x 3/8" dia	



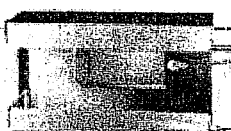
Drain basket 67035-70



Pipette rack 67035-72



Funnel rack 67035-73



Glove dispenser 67035-76



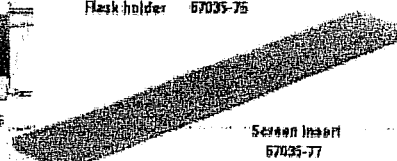
Drain shelf 67035-71



Funnel rack 67035-73



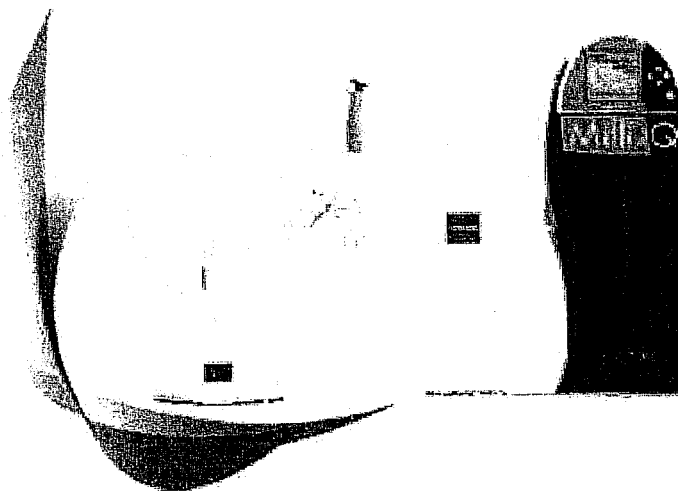
Flask holder 67035-75



Screen insert 67035-77

Milli-Q® Advantage A10 Water Purification Systems

User-adapted ultrapure water



EMD Millipore is a division of Merck KGaA, Darmstadt, Germany