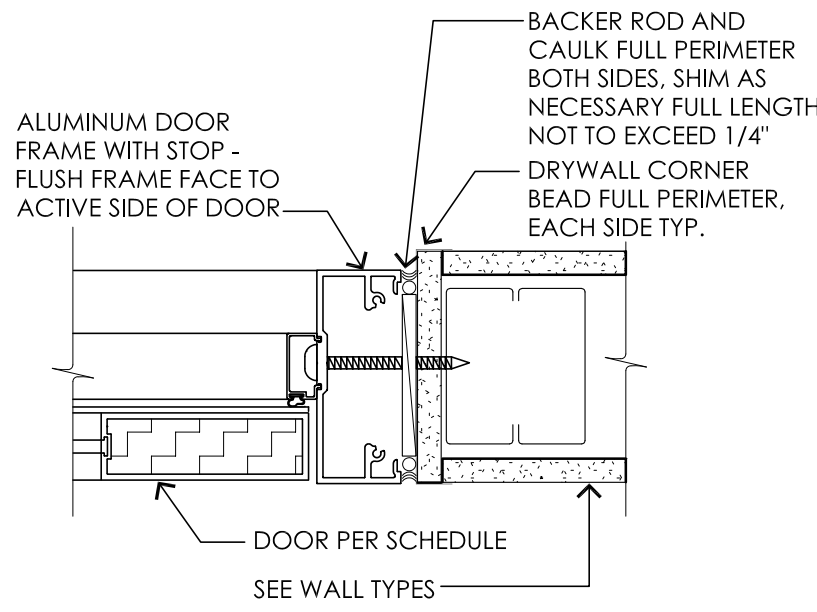
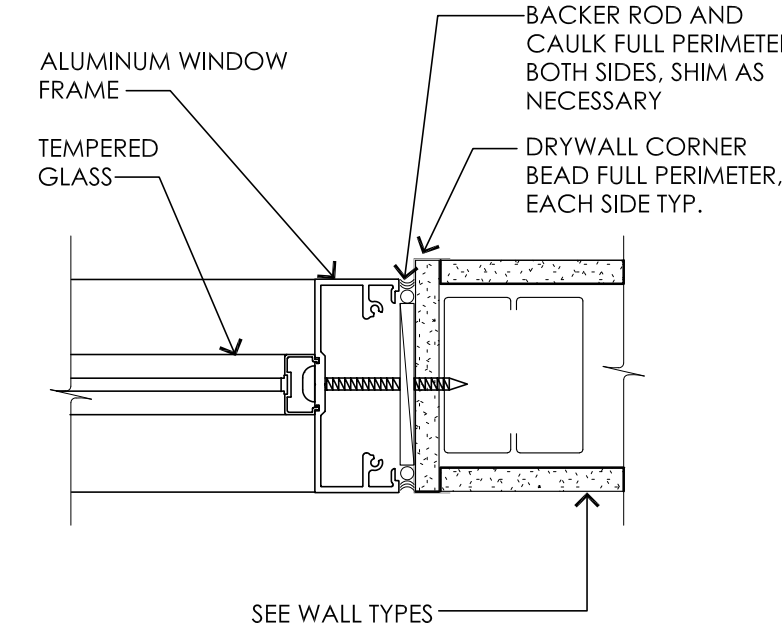


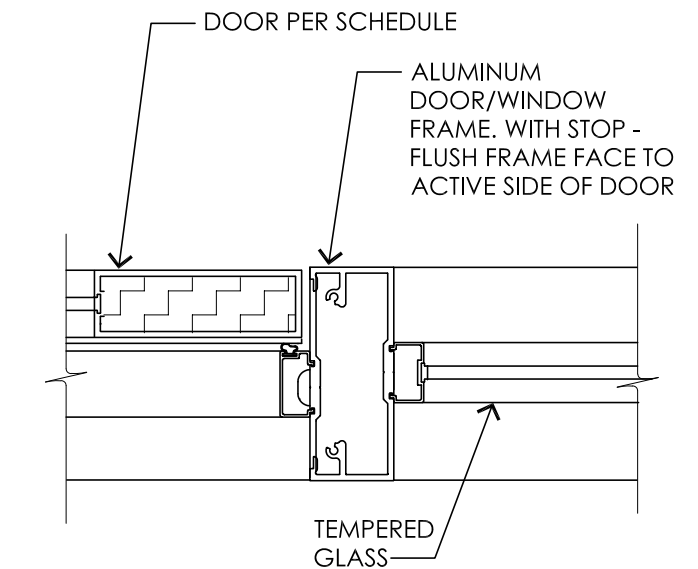
1 INTERIOR ALUM. - GWB HEAD Scale: 3" = 1'-0"



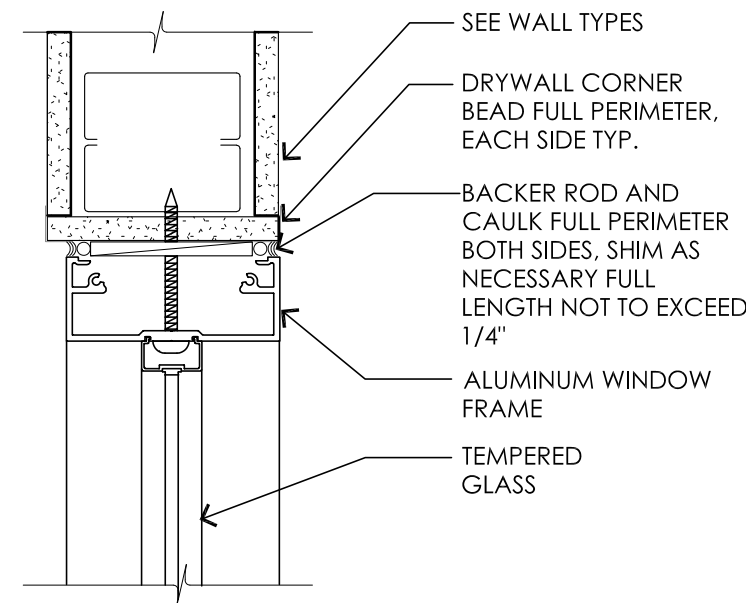
2 INTERIOR ALUM. - GWB JAMB Scale: 3" = 1'-0"



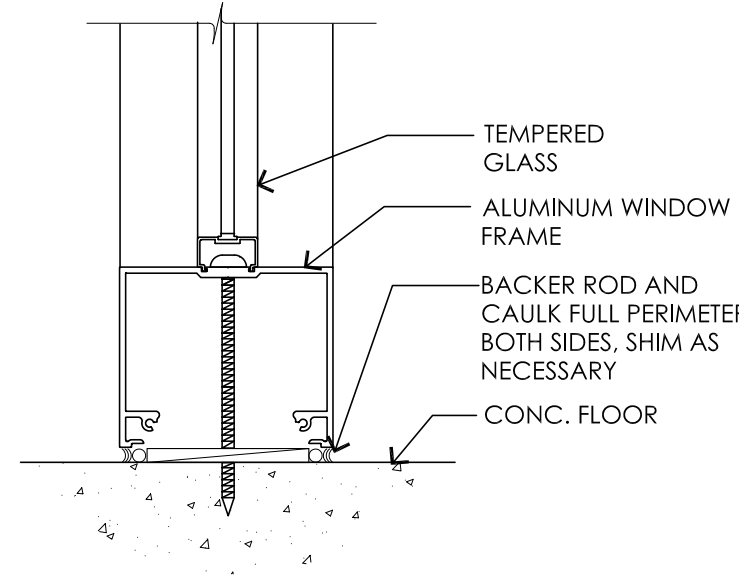
3 INTERIOR ALUM. - GLASS @ JAMB Scale: 3" = 1'-0"



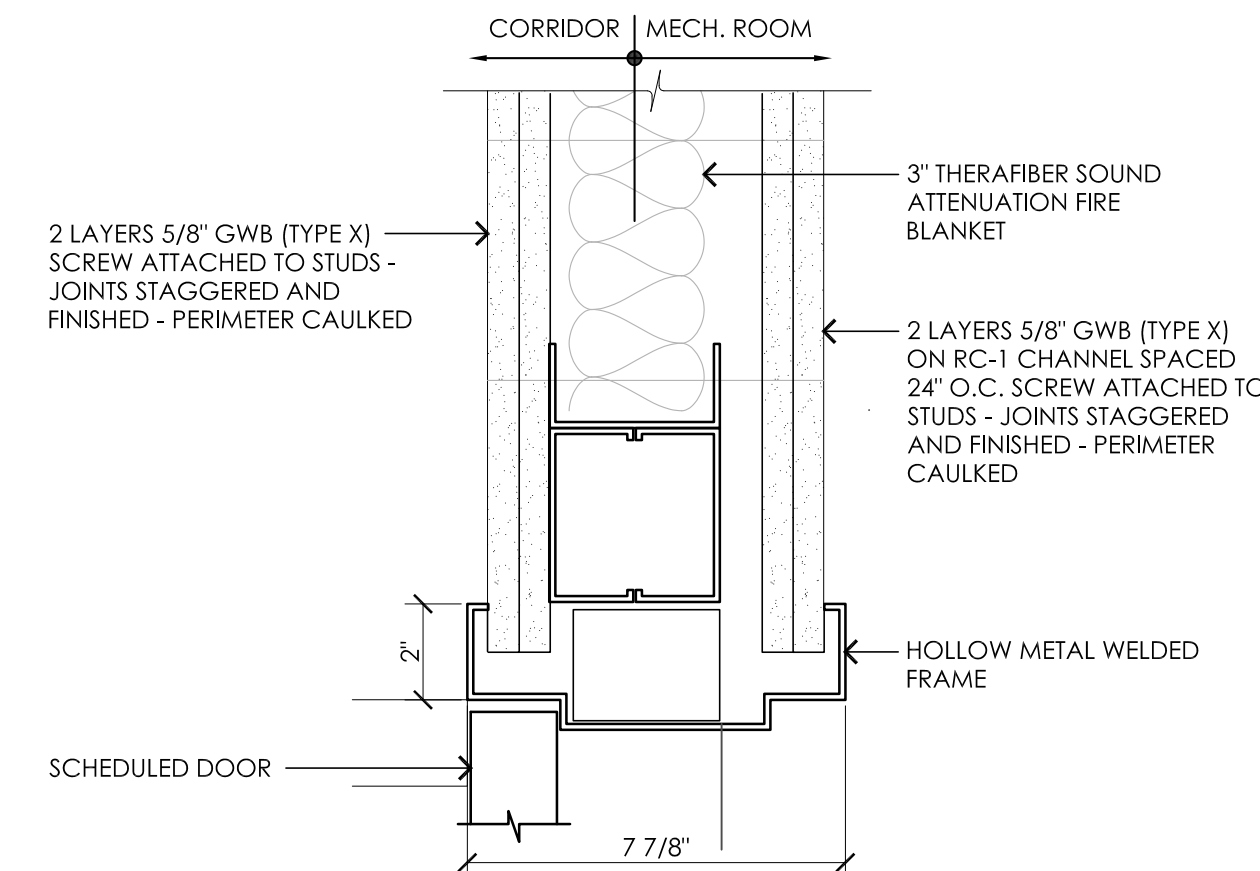
4 INTERIOR ALUM. - GLASS @ DOOR Scale: 3" = 1'-0"



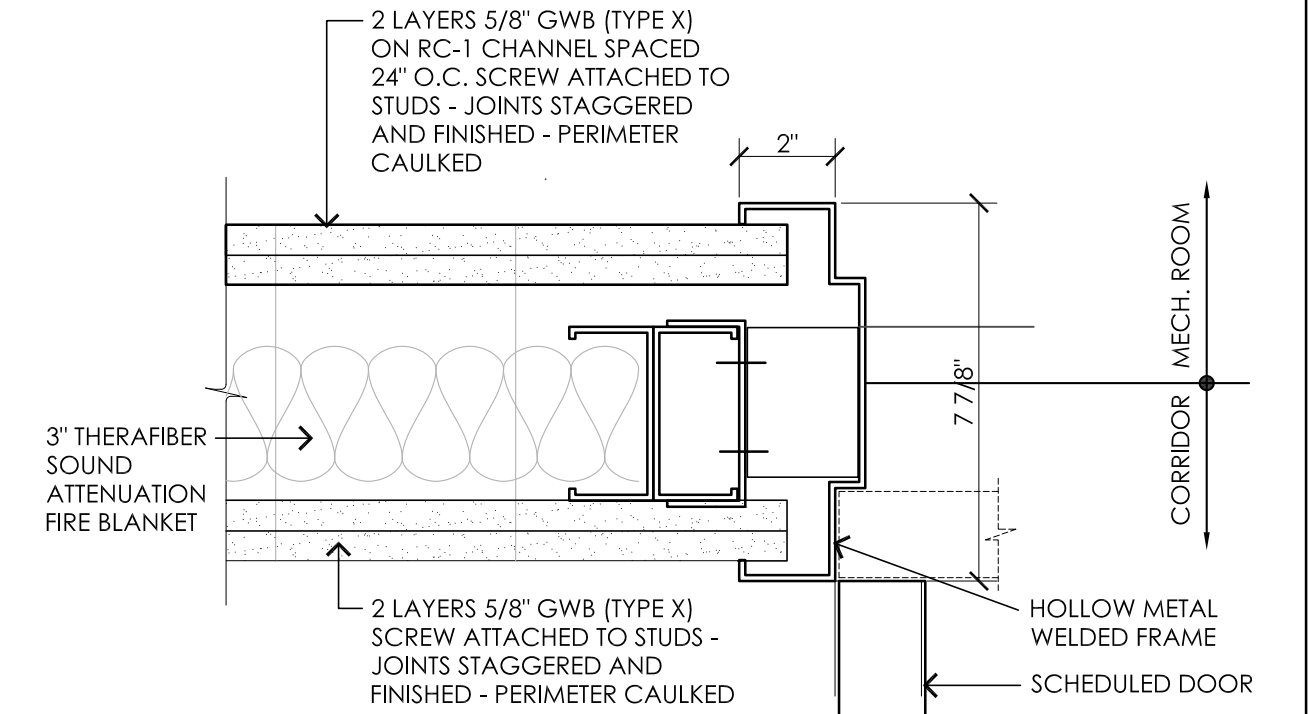
5 INTERIOR ALUM. - GLASS @ HEAD Scale: 3" = 1'-0"



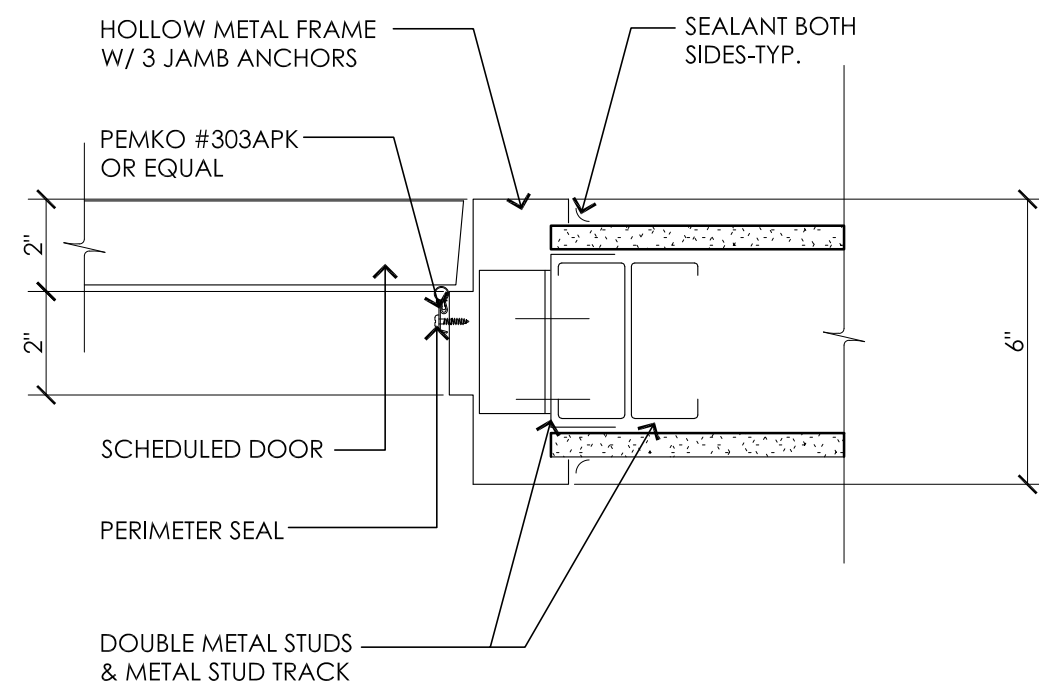
6 INTERIOR ALUM. - GLASS @ SILL Scale: 3" = 1'-0"



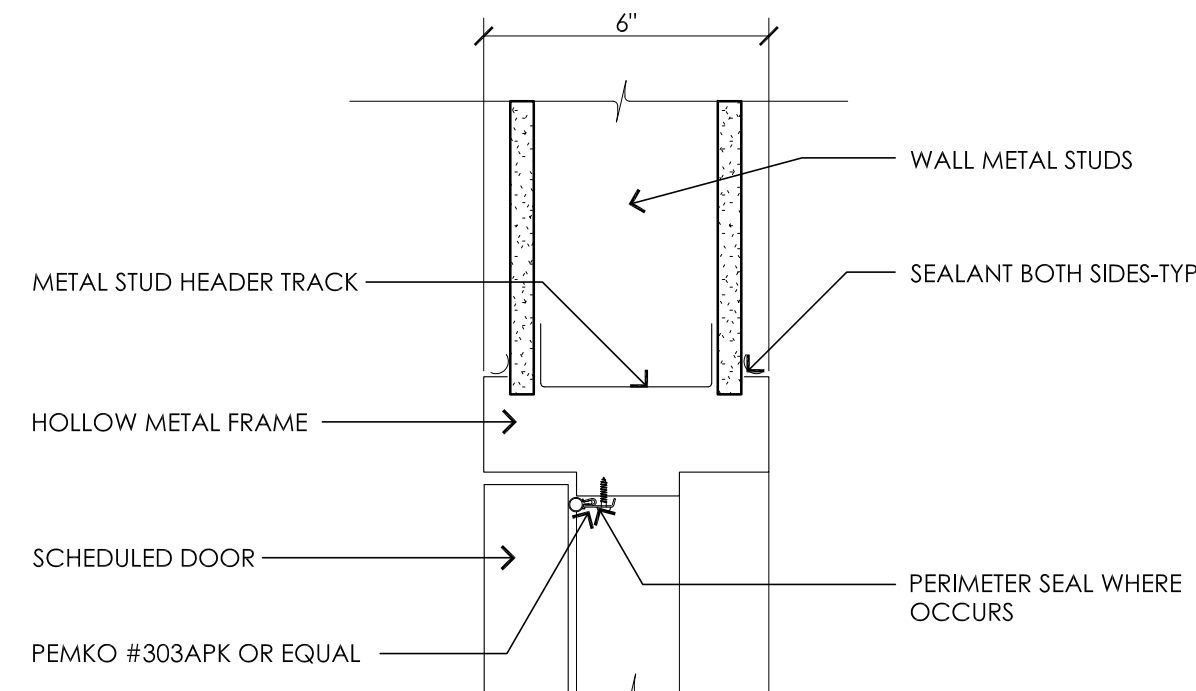
7 MECH. ROOM HM - GWB HEAD Scale: 3" = 1'-0"



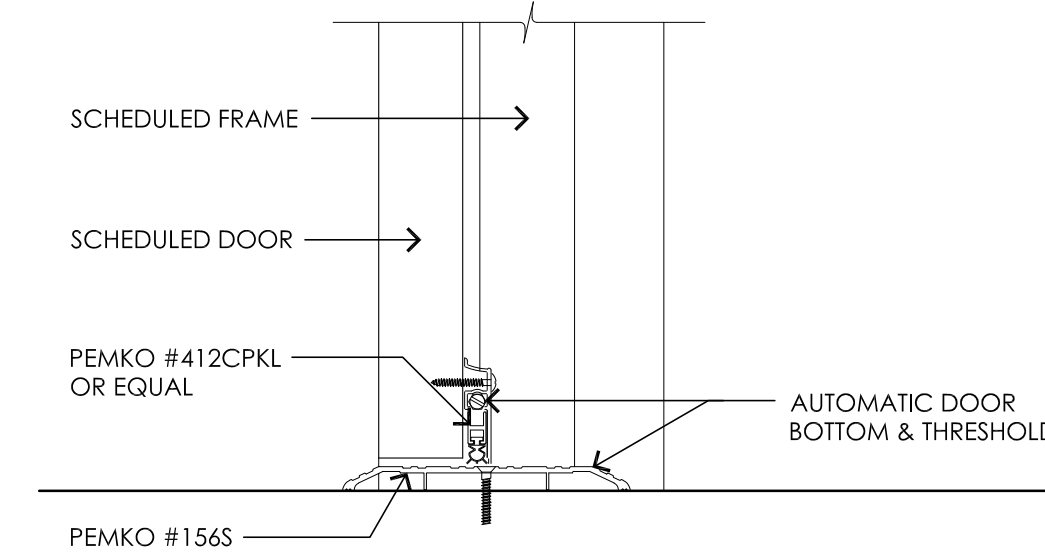
8 MECH. ROOM HM - GWB JAMB Scale: 3" = 1'-0"



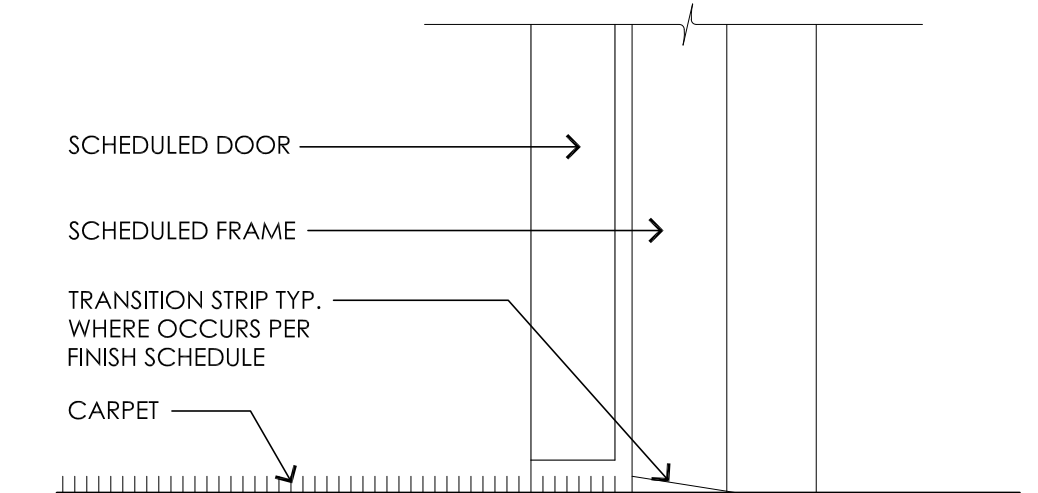
9 INTERIOR HM - GWB JAMB Scale: 3" = 1'-0"



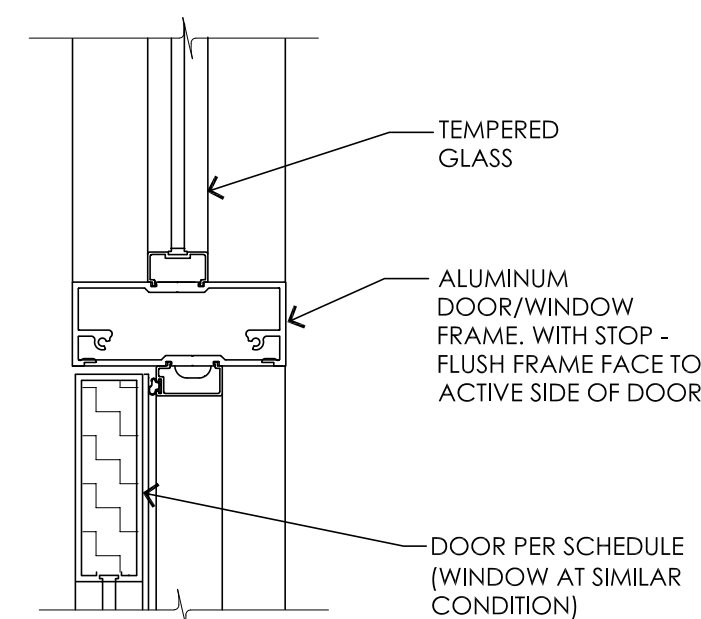
10 INTERIOR HM - GWB HEAD Scale: 3" = 1'-0"



11 INTERIOR THRESHOLD Scale: 3" = 1'-0"



12 INTERIOR HM - SILL Scale: 3" = 1'-0"

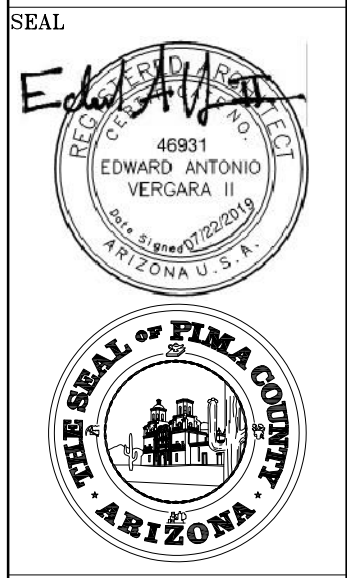


13 INTERIOR ALUM. - GLASS/DOOR @ MULLION Scale: 3" = 1'-0"

PIMA COUNTY FACILITIES MANAGEMENT, 150 WEST CONGRESS, TUCSON ARIZONA 85701 (520)740-3085

ADMIN WEST FIFTH FLOOR TI
 DOOR & WINDOW DETAILS

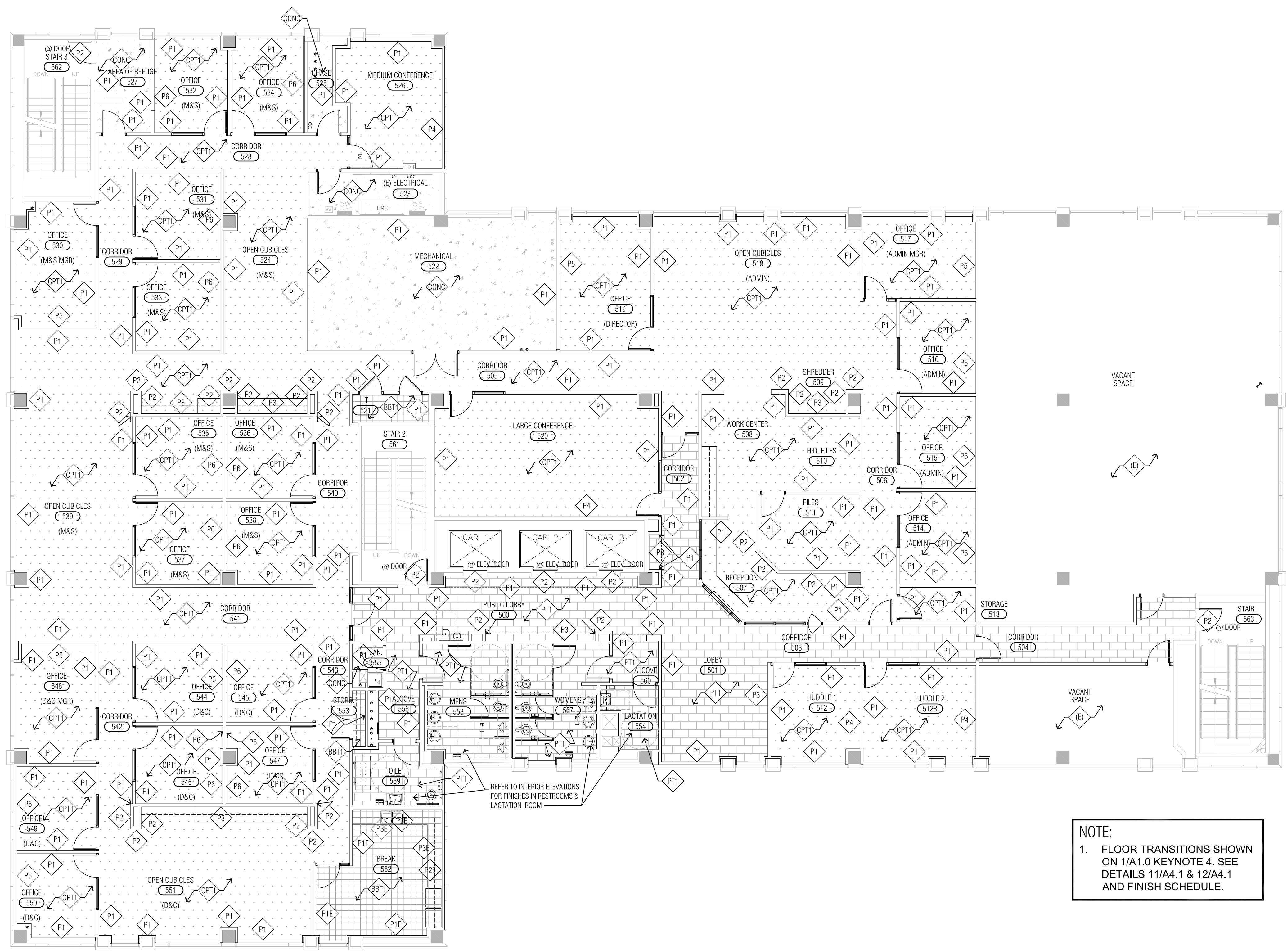
ADMINISTRATION WEST BUILDING
 150 WEST CONGRESS
 TUCSON, AZ



REVS: DATE:

DRWN BY: SS
 CKD BY: EAV
 DATE: 07/22/19
 SCALE: AS NOTED
 SHEET NO:


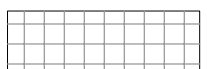
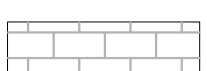

A4.1
 13 OF 48
 W.O. NUMBER
 19*10427



1 FINISH FLOOR PLAN

Scale: 1/8" = 1'-0"

LEGEND:

-  CPT1: MODULAR CARPET TILE - TYPICAL
-  BBT1: BIO-BASED VINYL TILE 12X24
-  PT1: 12X24 PORCELAIN FLOOR TILE
-  CONC: SEALED CONCRETE

GENERAL NOTES:

1. CONTRACTOR SHALL REVIEW ALL SECTIONS OF THIS DOCUMENT AND NOTIFY PIMA COUNTY ANY DISCREPANCIES OR OMISSIONS.
2. FOR ANY ITEM REQUIRING A COLOR OR FINISH SELECTION THAT IS NOT INDICATED, CONTACT PIMA COUNTY.
3. CHANGES IN FLOOR TYPES AT THE DOOR OPENING SHALL OCCUR AT THE CENTER OF THE DOOR FRAME UNLESS OTHERWISE NOTED.
4. CONTRACTOR SHALL CLEAN, PATCH AND REPAIR ALL SURFACES AND SUBSTRATES AS PER FINISH MATERIAL MANUFACTURER'S INSTALLATION REQUIREMENTS PRIOR TO INSTALLATION.
5. PROVIDE EPOXY GROUT AT ALL PORCELAIN TILE LOCATIONS.
6. WALL TILE LOCATIONS ARE INDICATED PER PLAN - SEE RESTROOM ELEVATIONS AND TYPICAL TILE LAYOUT.
7. PROVIDE 18" SQUARE AREA OF 'MOSAIC' FLOOR TILE CENTERED ON RESTROOM FLOOR DRAINS AND SLOPED TO THE DRAIN TO ASSIST WATER DRAINAGE. CREATE THE 'MOSAIC' TILE BY CUTTING THE 12" X 12" PORCELAIN FLOOR TILE INTO 2" X 2" MOSAIC.
8. CONTRACTOR SHALL REVIEW ALL SECTIONS OF THIS DOCUMENT AND NOTIFY ARCHITECT OF ANY DISCREPANCIES OR OMISSIONS.
9. FOR ANY ITEM REQUIRING A COLOR OR FINISH SELECTION THAT IS NOT INDICATED, CONTACT ARCHITECT.

FINISH NOTES:

1. ELEVATOR WALL: PAINT ELEVATOR DOOR AND TRIM 'P2'. PAINT 'P1' ON REMAINING WALL SURFACE AT ELEVATORS.
2. FIELD PAINT COLOR IS 'P1'. ACCENT PAINT COLORS ARE 'P2, P3, P4, P5 AND P6'. UNLESS OTHERWISE NOTED.
3. STAIRWELL DOORS: PAINT DOOR AND TRIM 'P2'.
4. SOFFIT ACCENT PAINT: PAINT SOFFIT AREAS IN LOBBY AND CONFERENCE ROOM TO BE PAINTED 'P4'. PAINT BOTTOM AND ALL VERTICAL SIDES OF SOFFIT, INCLUDING SOFFIT FACE TO 10' A.F.F. AT 'CLOUD' CEILINGS AS SHOWN ON REFLECTED CEILING PLAN.
5. PAINT ALL OPEN AREAS AND 'CLOUD' CEILING AREAS 'FLAT BLACK' (P8) ABOVE 10' A.F.F.
6. PROVIDE WINDOW COVERING 'RS1' AT ALL EXTERIOR WINDOWS EXCEPT MEN'S RM. PROVIDE SINGLE WIDTH SHADES UNLESS WIDTH EXCEEDS 144". IF WIDTH EXCEEDS 144" PROVIDE SINGLE SHADE MOUNTING SYSTEM FOR MULTIPLE WIDTHS. DIVIDE WIDTHS USING EXISTING BUILDING MULLIONS.
7. ALL GWB CEILINGS, HEADERS AND SOFFITS TO BE PAINTED 'P1' UNLESS OTHERWISE NOTED (SEE ADDITIONAL DIRECTION IN NOTE 4).

NOTE:
1. FLOOR TRANSITIONS SHOWN ON 1/A1.0 KEYNOTE 4. SEE DETAILS 11/A4.1 & 12/A4.1 AND FINISH SCHEDULE.

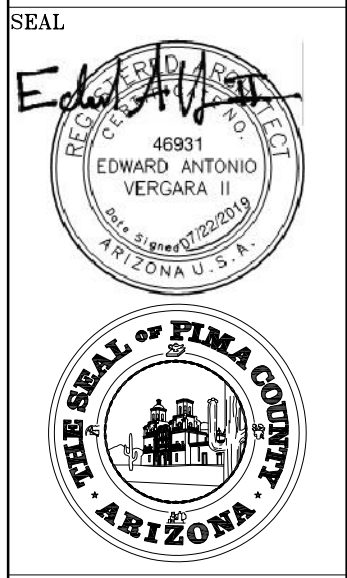
WINDOW COVERING NOTES:

1. PROVIDE WINDOW COVERING 'RS1' AT ALL EXTERIOR WINDOWS EXCEPT MEN'S RM. PROVIDE SINGLE WIDTH SHADES UNLESS WIDTH EXCEEDS 144". IF WIDTH EXCEEDS 144" PROVIDE SINGLE SHADE MOUNTING SYSTEM FOR MULTIPLE WIDTHS. DIVIDE WIDTHS USING EXISTING BUILDING MULLIONS.
2. PROVIDE WINDOW COVERINGS 'RS2' AT ALL EAST AND NORTH EXTERIOR WINDOWS. PROVIDE SINGLE WIDTH SHADES UNLESS WIDTH EXCEEDS 144". IF WIDTH EXCEEDS 144" DIVIDE WIDTHS USING EXISTING BUILDING MULLIONS WITH LEAST AMOUNT OF SHADES POSSIBLE.

PIMA COUNTY FACILITIES MANAGEMENT, 150 WEST CONGRESS, TUCSON ARIZONA 85701 (520)740-3085

**ADMIN WEST FIFTH FLOOR TI
FINISH FLOOR PLAN**

**ADMINISTRATION WEST BUILDING
150 WEST CONGRESS
TUCSON, AZ**



REV: DATE:

DRWN BY: **SS**
CKD BY: **EAV**
DATE: **07/22/19**
SCALE: **AS NOTED**
SHEET NO:

A5.0
14 OF 48
W.O. NUMBER
19*10427