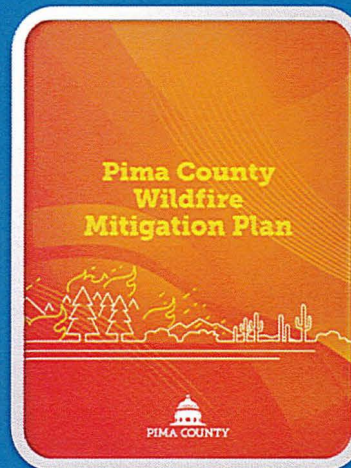




PIMA COUNTY

Wildfire Mitigation Plan

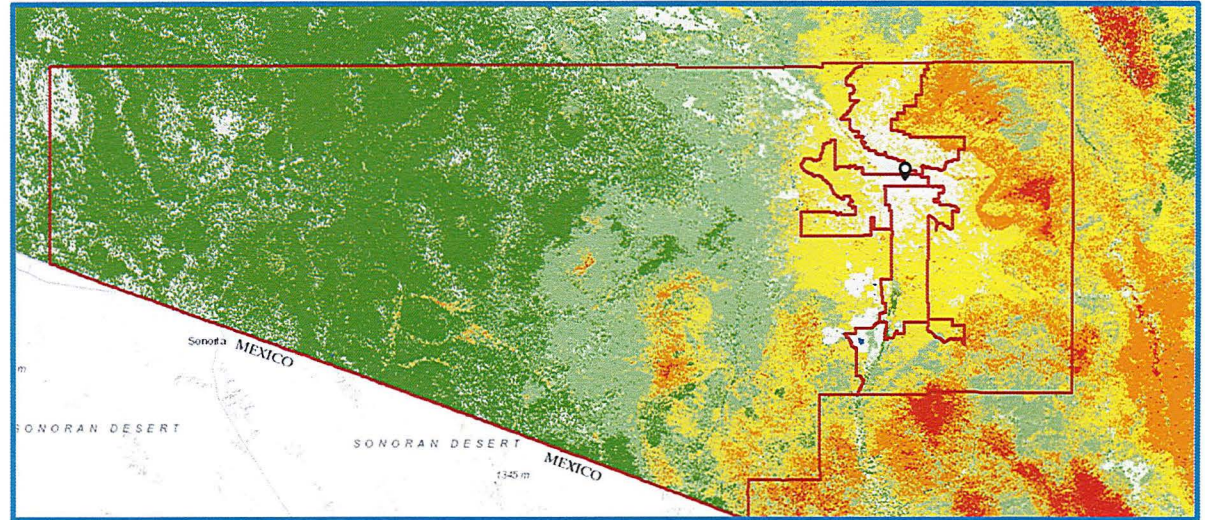


12

10/18/2025 10:00 AM



Wildland Urban Interface Map



Disclaimer

Pima County Districts

Jurisdictional Boundaries

Riparian Classifications

Pima County Parcels





Wildfire Hazard Risk

Wildland Urban Interface

Wildfire Mitigation Plan Breakdown



Task #	Task Health	Current status	Task	Description/Deliverables	Metrics of success	Funding/Budget Source	Projected Completion
P1		Completed	Create Wildfire message prevention calendar	Calendar that identifies two Wildfire topics each month focusing on mitigation/prevention, created for FY25-26 included in WMP presented to be shared with partner agencies for highlighting messaging and increased regional awareness to constituents	Number of posts shared across platforms (Engagement, likes or shares) Alignment with wildfire activity timeline. New regional collaboration with Fire agencies. Land managers and Public Information Officers	Dept absorbed	Q1
P2		Completed	Meet w/ regional agency Public Information Officers (PIO) for Wildfire message coordination	Coordinated social media posts Wildfire Safety PSAs	Number of posts shared across platforms (Engagement, likes or shares) Alignment with wildfire activity timeline. New regional collaboration with Fire District PIO	Dept absorbed	Q1
M4		Completed	Wildland Urban Interface/Intermix (WUI) map	WUI map to be used to triage resources in this plan, until the more detailed mapping resources are conducted in the CWPP	WUI map uploaded to WMP appendices, and used as reference to prioritize and coordinate efforts. Number of tasks and activities identified by map.	Dept absorbed	Q1
R2		Completed	Wildfire initial response overview	Process map out initial attack of wildfire response if a fire starts in Pima County; local, unincorporated, State and Federal flowchart identified	Flowchart of wildfire response in areas to be included in WMP, and also on website as part of FAQ	Dept absorbed	Q1
R3		Completed	WUI & Invasive Species map	Wildland Urban Interface/Intermix map that is layered with invasive species identification and treatment areas for WMP awareness	Fuel identification and treatment map for risk modeling and resource allocation added to WMP, until upcoming CWPP maps are completed	Dept absorbed	Q1
M9		In Progress	Riparian area Frequently Asked Questions	Educational material handout for homeowners to reference about mitigation instructions in riparian areas specifically in the Regional Flood Control space. Clear guidance for homeowners, HOAs, etc. Public education to prevent misconceptions about what is allowed to be removed since floods follow fires.	Decreased number of calls/emails for RFCD concerning what can be done in riparian areas. Additional educational informational material to constituents.	Dept absorbed	Q1
P6		In Progress	Create Wildfire Prevention, Invasives Species, and Emergency Response Frequently Asked Questions (FAQ)	FAQ webpage with 15-20 questions; in 3 different categories prevention, mitigation and response downloadable guides; interactive map of high-risk areas and resources; public submission form for additional	Page views and average time spent; # of FAQ downloads and resource link clicks; public feedback submitted via form; increased resident engagement in mitigation programs	\$5,000.00	Q2
P7		In Progress	Catalogue maps and information on Wildland Urban Interface/Intermix (WUI) areas	Running list of maps that help inform WUI area and fire risk, weather, etc for prevention, prediction, mitigation and possible response.	This task can be merged with CWPP and dashboard that will be created to represent mitigation work in CWPP	Dept absorbed	Q3
M1		In Progress	Expand UA Collaborative Extension Invasive education	New (expanded) contract with Pima County Collaborative Extension (PCCE) for targeted work related to expanded training opportunities and public outreach/engagement around post-wildfire recovery.	Expanded contract in place with PCCE that works with local fire agencies, state, federal and others to provide education to reduce wildfire fuels, promote wildfire-resistant ecology and increase rural and urban wildfire preparedness.	\$75,000.00	Q3
M2		In Progress	Invasive Species Coordination	Calendar and media kit for quarterly distribution on information for invasive species (coordinated calendar)	Increased engagement and coordination with regional collaborators, increased volunteer efforts, less invasive species needing remediation	\$5,000.00	Q1
M3		In Progress	Continue funding w/ regional collaborators for invasive species mitigation	Continuation and growth of grant opportunities when it comes to prevention, mitigation and response tasks in WMP	Documented amount of grant monies that have gone towards invasive species mitigation	\$25,000.00	Q1
M15		In Progress	Targeted Grazing Invasive species	Acres treated via sheep or goat grazing on invasive species, number of contracts, monitoring reports	Fuel reduction metrics, regrowth intervals, cost-effectiveness with number of acres treated measurement	Depts absorbed Collaborator supported	Q1
M17		In Progress	Wash vegetation education & management	Educational material on jurisdictional code & ordinance language for vegetation management for in washes that helps protect native vegetation and habit while reducing fire risk	Number of washes inspected and treated in WUI areas	Dept absorbed	Q1
R9		In Progress	Evacuation Map created Predeveloped evacuation zones	Public facing map which defines geospatial zones organized to facilitate evacuation of a designated area for wildfire and other hazards	Full collaboration from local, and state stakeholders. Page views, and ultimate facilitation of successful evacuation if necessary.	Dept absorbed	Q2
R14		In Progress	Public Safety Power Shutoff (PSPS) plan and procedures	Understand and share educational materials that cover PSPS process, how constituents can update their information, and encourage coordination on this process	Help residents be educated so that they can be alerted before a possible PSPS and continue coordination with utility companies	Collaborator supported	Q1
R13		In Progress	Regional WF Taskforce meetings (2x year)	Updated contact list for agency liaisons, shared learned documents and project updates for procedure planning	Attendance by invited agency, action items completed if brought up at meetings, improved interagency coordination for wildfire events (pre, during, post). Have everyone understand their role and have it written down in a process.	Dept absorbed	Q4
P3		In Progress	Increase Firewise principles education through presentations, printed materials and social media campaigns	Update, create, release Firewise messaging and outreach campaign (social, digital, print) educational materials	Increase Firewise USA site registrations and assessments- and neighborhoods that have the designation	\$5,000.00	Q1
P4		Planning	Create bilingual Wildfire educational campaign & materials	Professionally translated wildfire prevention & response resources (PSAs, social, print)	Distribution volume, community feedback, and engagement analytics (views, shares, documents)	\$5,000.00	Q2

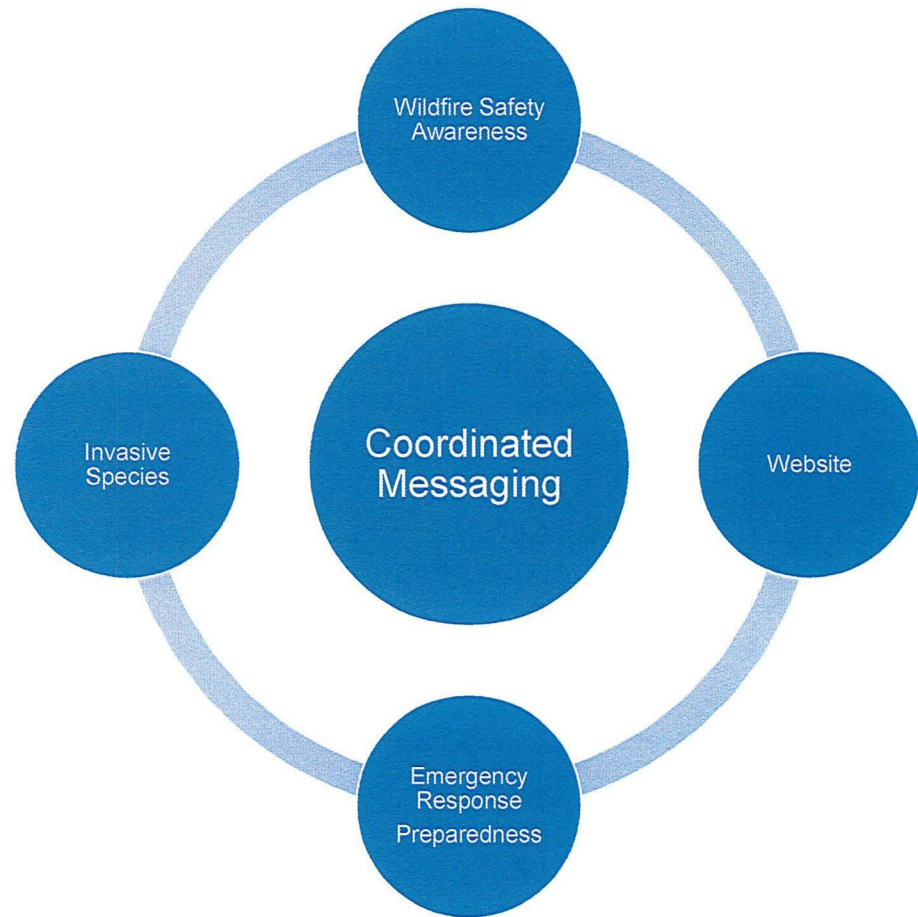
 Completed
  In Progress
  Planning
  Discovery



Public Education

Wildfire Messaging Calendar

JANUARY	FEBRUARY	MARCH
DEFENSIBLE SPACE MESSAGING	VOLUNTEER INVASIVE SPECIES MITIGATION RED FLAG WARNINGS	VOLUNTEER INVASIVE SPECIES MITIGATION RED FLAG WARNINGS
APRIL	MAY	JUNE
DEFENSIBLE SPACE FIREWISE INFORMATION	WILDLIFE AWARENESS MONTH	MYALERT SIGN-UPS READY SET GO EVACUATION
JULY	AUGUST	SEPTEMBER
FLOOD AWARENESS CAMPING/WILDFIRE SAFETY	DEFENSIBLE SPACE	MYALERT REMINDERS NATIONAL PREPAREDNESS MONTH
OCTOBER	NOVEMBER	DECEMBER
FIRE PREVENTION MONTH FIREWISE INFORMATION	INVASIVE SPECIES VOLUNTEER SIGN-UPS	GO BAG PREPARATION FOR EVACUATION





Mitigation

Invasive Species
Pulls

WUI Map

Volunteer Events

Defensible Space

Chipping Events

Brush & Bulky



Emergency Response

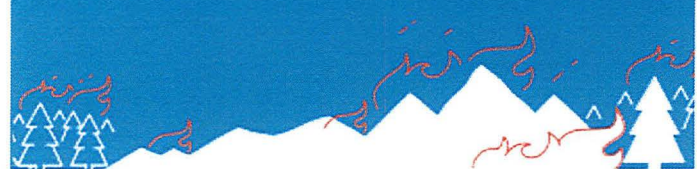
Predeveloped
Evacuation
Zones

Encourage
MyAlert signups

Update
CWPP

Evacuation
Preparedness

Tabletop
Exercises





PIMA COUNTY

Board of Supervisors

Rex Scott, *Chair*, District 1

Jennifer Allen, *Vice Chair*, District 3

Dr. Matt Heinz, District 2

Steve Christy, District 4

Andrés Cano, District 5

Pima County Administrator

Jan Leshner