

Divina Echanove

From: Kathleen Alvey [REDACTED]
Sent: Sunday, April 16, 2023 3:28 PM
To: COB_mail; District2; District4; District1; District3; District5
Subject: RE: P22CU00013 Cell tower Wolverton and S Sierrita Mtn Rd

CAUTION: This message and sender come from outside Pima County. If you did not expect this message, proceed with caution. Verify the sender's identity before performing any action, such as clicking on a link or opening an attachment.

Our neighborhood has many concerns about not only the esthetics of a Cell tower in our community but the harmful effects on our wildlife and plants. Right now we have pairs of endangered eagles nesting in this location that need preserving. Please read below 2 articles that show adverse effects of cell towers on the environment and humans/wildlife.

Thank you for your time,

Kathleen Alvey
10390 S Sierrita Mtn Rd PMB 165
Tucson, Arizona 85736
[REDACTED]

7 Major Harmful Effects of Cell Phone Towers | Radiation Pollution

Article shared by :

This article throws light upon the seven major harmful effects associated with cell phone towers. The harmful effects are: 1. Effect on Human Brain 2. Cognitive Effects 3. Electromagnetic Hypersensitivity 4. Thermal Effects 5. Effect on Insects 6. Effect on Plants 7. Impacts on Bio-System and Ecosystem.

1. Effect on Human Brain:

The Interphone study released in May 2010 reported 5,117 brain tumour cases and stated that people who use cell phones for 30 minutes per day over a duration of eight-ten, have doubled to quadrupled chances of getting brain tumour, and that's why it was classified as Class 2B.

Use of cell phones is a personal choice, but what about people who live in the vicinity of cell towers? They are exposed to the radiation 24x7. Cell operators claim that tower radiation is less intense than the sun's rays, but tower radiation is continuous and different in the way it impacts the body.

The Bio-Initiative Reports of 2007 and 2012 have proposed a safe radiation density of 1 milliWatt/m {+2} for outdoor, cumulative radiofrequency (RF) exposure and 0.1 milliWatt/m {+2} for indoor, cumulative RF exposure.

- i. Cell phone users had an increased risk of malignant gliomas.
- ii. Link between cell phone use and a higher rate of acoustic neuromas.
- iii. Tumors are more likely to occur on the side of the head that the cell handset is used.

iv. One hour of cell phone use per day significantly increases tumor risk after ten “years or more.

2. Cognitive Effects:

ADVERTISEMENTS:

A 2009 study examined the effects of exposure to radiofrequency radiation (RFR) emitted by standard GSM cell phones on the cognitive functions of humans.

The study confirmed longer (slower) response times to a spatial working memory task when exposed to RFR from a standard GSM cellular phone placed next to the head of male subjects, and showed that longer duration of exposure to RFR may increase the effects on performance.

CTR Effects

3. Electromagnetic Hypersensitivity:

Some users of mobile handsets have reported feeling several unspecific symptoms during and after its use; ranging from burning and tingling sensations in the skin of the head and extremities, fatigue, sleep disturbances, dizziness, loss of mental attention, reaction times and memory retentiveness, headaches, malaise, tachycardia (heart palpitations), to disturbances of the digestive system.

4. Thermal Effects:

ADVERTISEMENTS:

One well-understood effect of microwave radiation is dielectric heating, in which any dielectric material (such as living tissue) is heated by rotations of polar molecules induced by the electromagnetic field. In the case of a person using a cell phone, most of the heating effect will occur at the surface of the head, causing its temperature to increase by a fraction of a degree.

In this case, the level of temperature increase is an order of magnitude less than that obtained during the exposure of the head to direct sunlight. The brain’s blood circulation is capable of disposing of excess heat by increasing local blood flow.

However, the cornea of the eye does not have this temperature regulation mechanism and exposure of 2-3 hours’ duration has been reported to produce cataracts in rabbits’ eyes at SAR values from 100-140W/kg, which produced lenticular temperatures of 41°C.

5. Effect on Insects:

Monarch butterflies and locusts migrate great distances using their antennae to sense air currents and earths electromagnetic fields. Moths are drawn to light frequencies. Ants, with the help of their antennas are adept at electrical transmission and found to respond to frequencies as low as 9 MHz. Flying ants are very sensitive to electromagnetic fields.

6. Effect on Plants:

Tops of trees tend to dry up when they directly face the cell tower antennas and they seem to be most vulnerable if they have their roots close to the water. Some studies have found both growth stimulation and dieback.

The browning of tree tops is often observed near cell towers, especially when water is near their root base. The tree tops are known as RF waveguides. In fact, military applications utilize this capability in trees for low-flying weapon systems.

In an observational study, it was found that the output of most fruit-bearing trees reduced drastically from 100% to 5% after 2.5 years of cell tower installation in a farm facing four cell towers in Gurgaon-Delhi Toll Naka.

7. Impacts on Bio-System and Ecosystem:

Every living being is tuned into the earth's electromagnetism and uses it for various purposes. A natural mineral magnetite, which is found in living tissues, seems to play an important role. These magnetite crystals are found in bacteria, protozoa, teeth of sea mollusks, fish and sea mammals, eye and beak of birds, and in humans.

The areas of enquiry and experimentation of in vitro studies include genotoxicity, cancer-related gene and protein expression, cell proliferation and differentiation, and apoptosis and in vivo studies include thermal effects, animal behavior, brain biochemistry, neuro pathology, teratogenicity, reproduction and development, immune function, blood-brain barrier, visual auditory systems and effects on genetic material, cell function, and biochemistry.

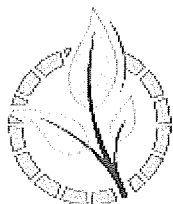
by Environmental Pollution

[Skip to content](#)

Cellphone Towers EMR Damaging Biological Systems of Birds, Insects, Humans

• 415 SHARES

-
-
-
-



Natural Society
Transform your health naturally

FEATURED

by Natural Society Posted on October 25, 2011

Updated on April 14, 2023

The electromagnetic radiation (EMR) emitted from mobile towers is so powerful that it affects the biological systems of birds, insects, and even humans. The study, released by the environment ministry, called for the protection of flora and fauna by law.

“The review of existing literature shows that the EMRs are interfering with the biological systems in more ways than one and there had already been some warning bells sounded in the case on bees and birds, which probably heralds the seriousness of this issue and indicates the vulnerability of other species as well,” the study found.

In September of 2010, the ministry established a 10-member committee under Bombay Natural History Society (BNHS) with director Asad Rahmani to study the impact of cellphone towers on birds and bees. The group of experts reviewed 919 studies performed in India and abroad regarding the **effects of cellphone towers on birds, insects, animals, wildlife, and humans**.

What the group found was quite startling.

Electromagnetic Radiation may Play a Role in the Decline of Animal and Insect Populations

Of the 919 studies, a staggering **593 showed the negative impact of mobile towers on birds, bees, humans, wildlife and plants**. The experts even cited an international study that pinpointed cellphone towers as a potential cause in the decline of animal populations. They went on to say that there was an urgent need to focus more scientific attention on the subject before it was too late.

In addition to calling for a law protecting urban flora and fauna from emerging threats of electromagnetic radiation, the experts are also suggesting bold signs and messages on the dangers of cell phone tower and radiation to be posted near the position of cellphone towers.

“To prevent overlapping high radiations fields, new towers should not be permitted within a radius of one kilometre of existing towers. If new towers must be built, construct them to be above 80 feet and below 199 feet ... to avoid the requirement for aviation safety lighting,” it said.

The negative effects of EMR on life is something that has been ignored by health officials and legislators for years. As cellphone subscriptions outnumber the total number of US citizens, more and more mobile phone towers are popping up around the globe. As the experts cautioned, it is extremely pertinent that further independent research is conducted to highlight the dangers of EMR.

[Skip to content](#)

[GENERAL HEALTH](#)

[GMOS](#)

[WEIGHT LOSS](#)

[SCIENCE & MEDICINE](#)

[HEALTH NEWS](#)

[ENVIRONMENT](#)

[FOOD AS MEDICINE](#)

[HOME REMEDIE](#)

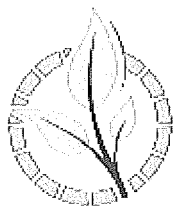


[Home](#) / [Featured](#) / [Cellphone Towers EMR Damaging Biological Systems of Birds, Insects, Humans](#)

Cellphone Towers EMR Damaging Biological System of Birds, Insects, Humans

• **415**SHARES

-
-
-
-
-

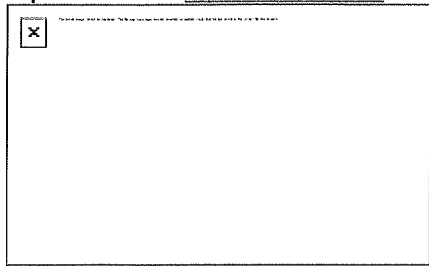


Natural Society
Transform your health naturally

FEATURED

by [Natural Society](#) Posted on [October 25, 2011](#)

Updated on [April 14, 2023](#)



The electromagnetic radiation (EMR) emitted from mobile towers is so powerful that it affects the biological systems of birds, insects, and even humans. The study, released by the environment ministry, called for the protection of flora and fauna by law.

“The review of existing literature shows that the EMRs are interfering with the biological systems in more ways than one and there had already been some warning bells sounded in the case on bees and birds, which probably heralds the seriousness of this issue and indicates the vulnerability of other species as well,” the study found.

In September of 2010, the ministry established a 10-member committee under Bombay Natural History Society (BNHS) with director Asad Rahmani to study the impact of cellphone towers on birds and bees. The group of experts reviewed 919 studies performed in India and abroad regarding the **effects of cellphone towers on birds, insects, animals, wildlife, and humans**.

What the group found was quite startling.

Electromagnetic Radiation may Play a Role in the Decline of Animal and Insect Populations

Of the 919 studies, a staggering **593 showed the negative impact of mobile towers on birds, bees, humans, wildlife and plants**. The experts even cited an international study that pinpointed cellphone towers as a potential cause in the decline of animal populations. They went on to say that there was an urgent need to focus more scientific attention on the subject before it was too late.

In addition to calling for a law protecting urban flora and fauna from emerging threats of electromagnetic radiation, the experts are also suggesting bold signs and messages on the dangers of cell phone tower radiation to be posted near the position of cellphone towers.

“To prevent overlapping high radiations fields, new towers should not be permitted within a radius of one kilometre of existing towers. If new towers must be built, construct them to be above 80 feet and below 199 feet ... to avoid the requirement for aviation safety lighting,” it said.

The negative effects of EMR on life is something that has been ignored by health officials and legislators for years. As cellphone subscriptions outnumber the total number of US citizens, more and more mobile phone towers are popping up around the globe. As the experts cautioned, it is extremely pertinent that further independent research is conducted to highlight the dangers of EMR.

Additional Sources:

DON'T MISS OUT ON NEW NS CONTENT

[Subscribe]



Natural Society

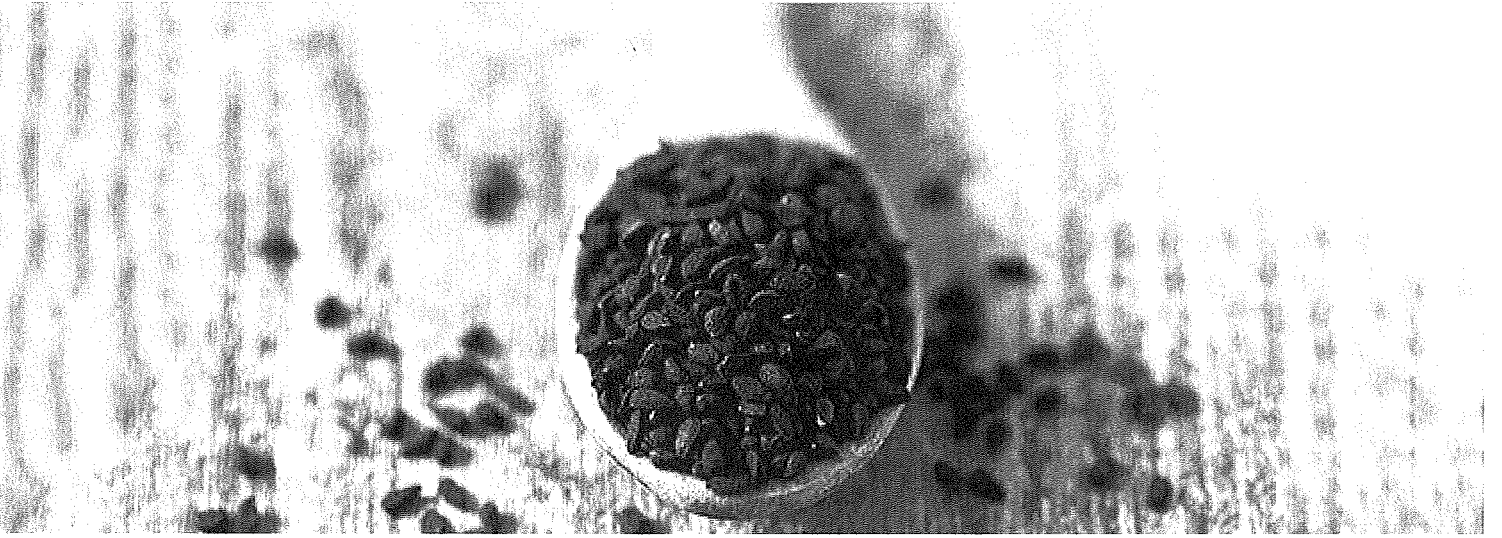
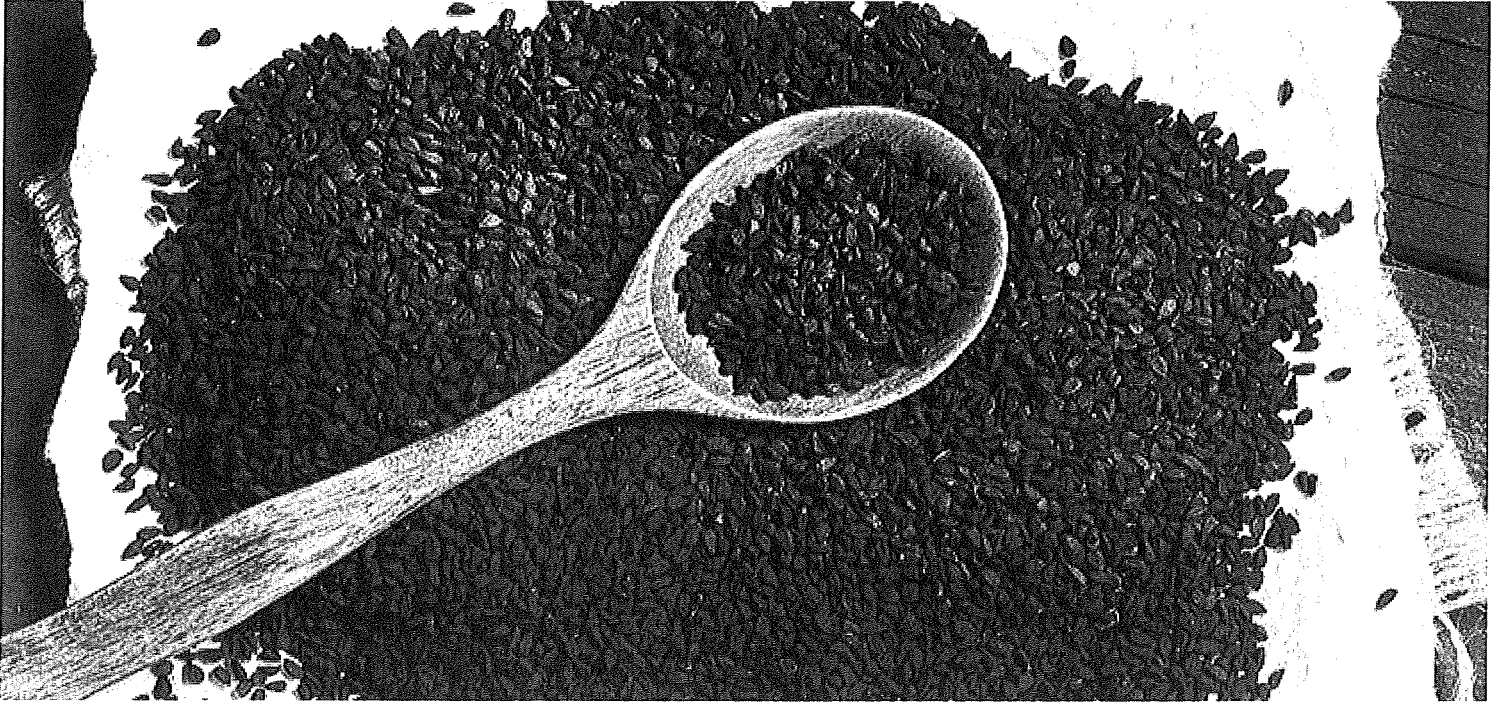
Natural Society staff contribution

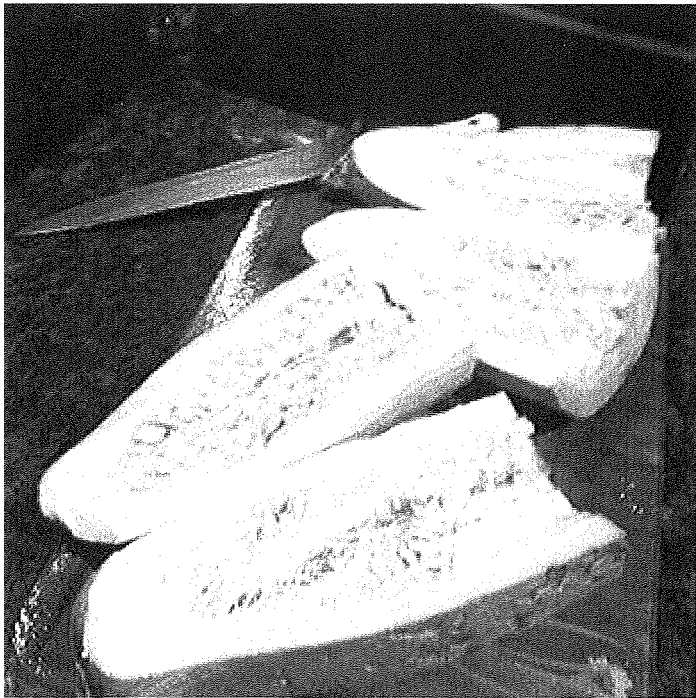
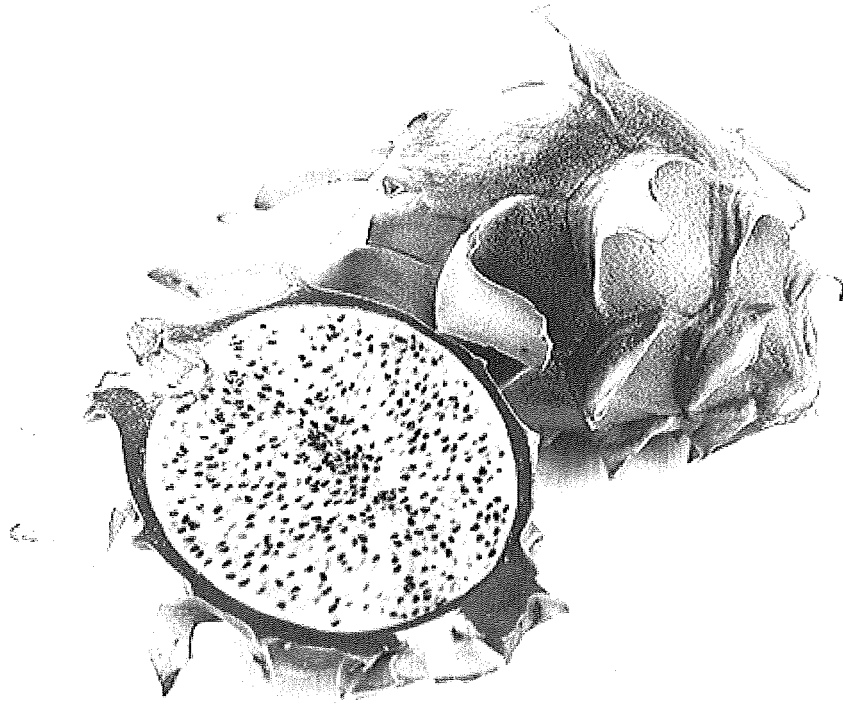
DON'T MISS OUT ON NEW NS CONTENT

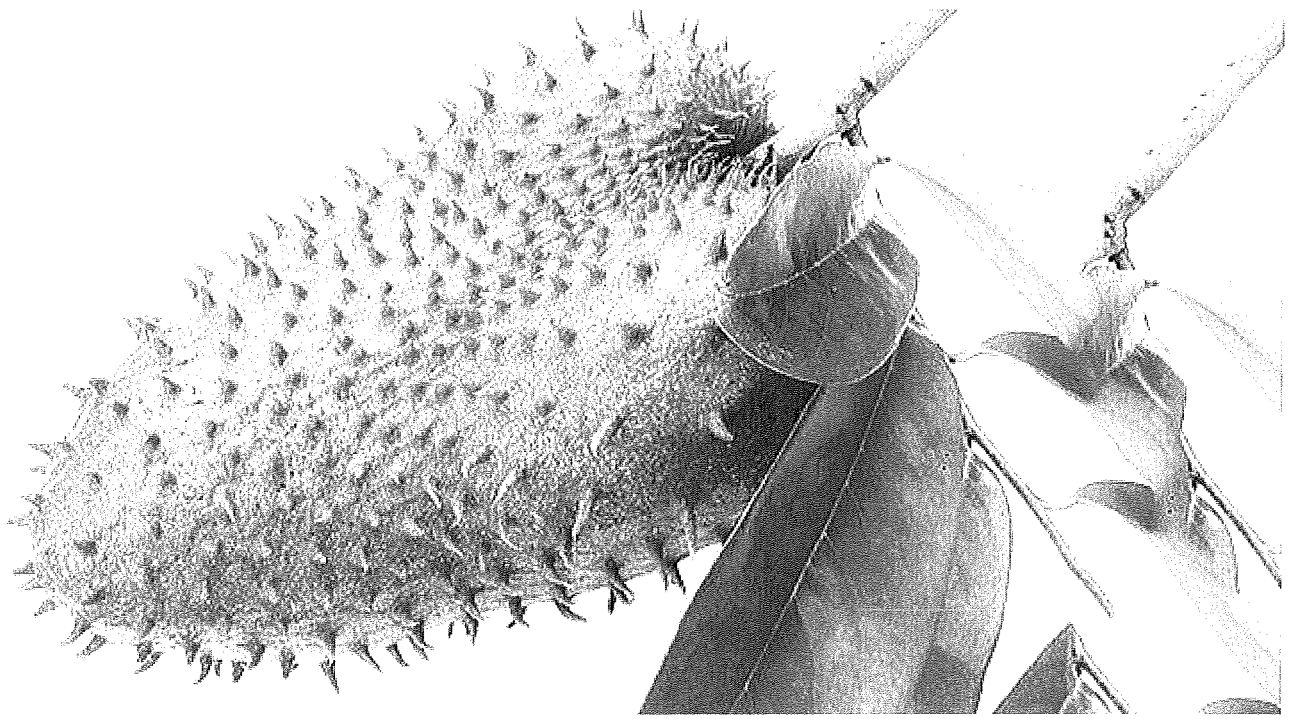
[Subscribe]

Most Popular Stories

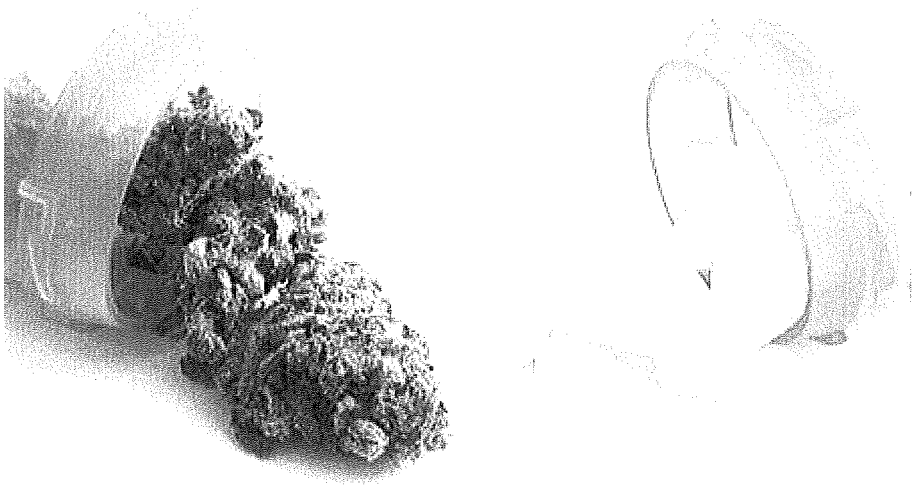








ABOUT US



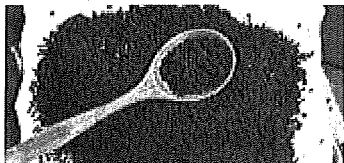
Lifestyle News

All of the latest health news that actually matters.

POPULAR POSTS



- [Russia Bans All U.S. Corn and Soy Imports Due to GMO Contamination](#)



- [10 Reasons You Really Need to Be Eating Black Seed](#)

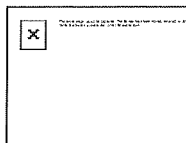


- [Ancient Medicine: Black Seed Oil's 21 Powerful Health Benefits](#)



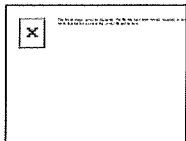
- [10 Super Weird Exotic Superfoods You Haven't Heard Of](#)

SHOP LINKS



-

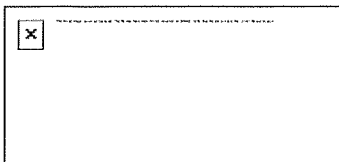
[USDA Organic 40 Days Storeable Food](#)



-

[THE Organic Non-GMO Cookbook & Shopping Guide \(E-Book\)](#)

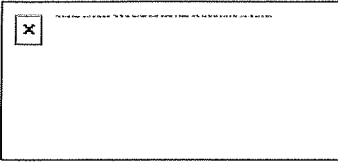
POPULAR POSTS



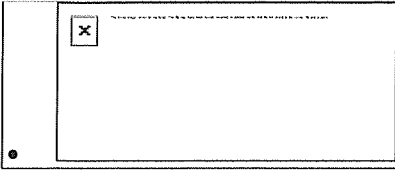
- [Russia Bans All U.S. Corn and Soy Imports Due to GMO Contamination](#)



- [10 Reasons You Really Need to Be Eating Black Seed](#)



• **[Ancient Medicine: Black Seed Oil's 21 Powerful Health Benefits](#)**



• **[10 Super Weird Exotic Superfoods You Haven't Heard Of](#)**

[FACEBOOK](#)[TWITTER](#)[INSTAGRAM](#)[PINTEREST](#)[YOUTUBE](#)

[Terms & Conditions](#) | [Privacy Policy](#)

©2023 - All Rights Reserved. Developed By [StatenWeb](#)

Overview

This website uses cookies to improve your experience while you navigate through the website. Out of these, the cookies that are categorized as necessary are stored on your browser as they are essential for the working of basic functionalities of the ...

Necessarent from my Verizon, Sam

Divina Echanove

From: HENRY OCHOA <[REDACTED]>
Sent: Sunday, April 16, 2023 9:17 PM
To: COB_mail
Subject: RE:P22CU00013 WOLVERTON - S SIERRITA MOUNTAIN ROAD Communication Tower

CAUTION: This message and sender come from outside Pima County. If you did not expect this message, proceed with caution. Verify the sender's identity before performing any action, such as clicking on a link or opening an attachment.

I live in the area where this Communication Tower is proposed to be built. This is my protest letter to oppose this Cell Tower due to municipal code that states projects will not adversely impact the character of the community and they should not violate the investment that residents make in their homes. This Cell Tower can be built in other areas away from our residential area where children or animals live.

Thank You

Henry V. Ochoa
12551 S. Saladom Rd.
Tucson, Az. 85736

SEARCHED SERIALIZED FILED
APR 17 2023 10:00 AM
FBI - TUCSON

ll

April 17, 2023

Board of Supervisors

RE: P22CU00013 Wolverton S. Sierrita Mtn. Rd. Agenda #38

Supervisors,

I am once again contacting you regarding the proposed cell tower. My wife and I own the two properties on the north side of the proposed site. We have spent several years and many thousands of dollars cleaning up and improving this property as our retirement property.

My wife and I are **adamantly opposed** to any cell tower being build that will loom many, many feet higher than, any other structure in the neighborhood, devalue our property value not to mention the health risks that are imminent. In addition is appears that you will be in violation of the Pima county land use code by allowing a cell tower to be constructed on the Wolverton property; Section H 18.07.030 subsections 1c, 1g & 2d.

Clearblue did make a lame attempt to hold a meeting. They send a letter to a few dated March 24th, postmarked March 27 and arrived 48 hours prior to them holding a virtual neighborhood meeting. They did the demographics for this area and knew most people do not get their mail daily, have a computer nor the technical expertise to connect to a virtual meeting. Clearblue has been underhanded in handling this issue to better themselves and have an excuse that they have made a good faith attempt in bringing the neighborhood together. The attendance was poor to say the least but, they already knew it would be.

I have talked to many neighbors only to hear many say they have never been notified of the proposed cell tower and are also upset & opposed to the cell tower.

With other land available for a cell tower, I find it hard to comprehend why it is so important that anther un-needed cell tower needs to be built on the Wolverton property where it will have a massive impact on many neighbors.

Sincerely,

James Griffin

11910 s. Sierrita Mtn. Rd.



11910 S. SIERRITA MOUNTAIN RD
WOLVERTON, AZ 85646