



PIMA COUNTY

WILDFIRE MITIGATION

< PLAN UPDATE >

WILDFIRE OUTLOOK



DROUGHT

Seasonal drought outlook shows southern Arizona in D2 (Severe) and D3 (Extreme) drought conditions.



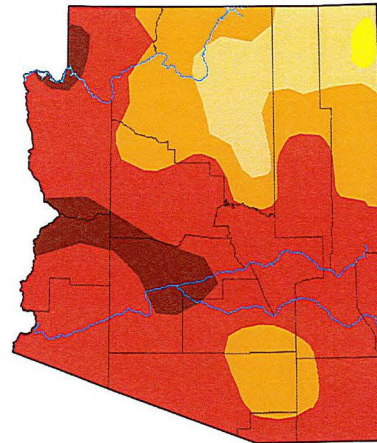
HEAT

April through June temperatures are trending 40-80% above normal.



FIRE POTENTIAL

Southeast Arizona are forecast to be in above normal potential for a significant wild land fire.



Intensity

- None
- D0 (Abnormally Dry)
- D1 (Moderate Drought)
- D2 (Severe Drought)
- D3 (Extreme Drought)
- D4 (Exceptional Drought)
- No Data



Above normal significant wildland fire potential indicates a greater than usual likelihood that significant wildland fires will occur.
Significant wildland fires should be expected at typical times and intervals during normal significant wildland fire potential conditions.
Significant wildland fires are still possible but less likely than usual during forecasted below normal periods.

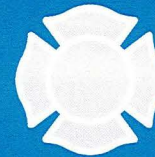


Map produced by
Predictive Services,
National Interagency Fire Center
Boise, Idaho
Issued April 1, 2025
Next issuance May 1, 2025

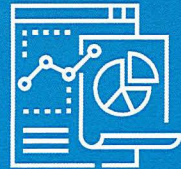
PLAN PROGRESS



WILDFIRE
EXECUTIVE TEAM



PIMA COUNTY FIRE
CHIEF'S WORKING GROUP



CATALOG
DATA TOOLS



WILDFIRE
SEMINARS

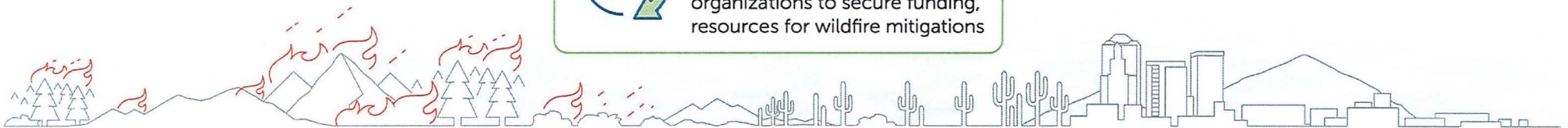
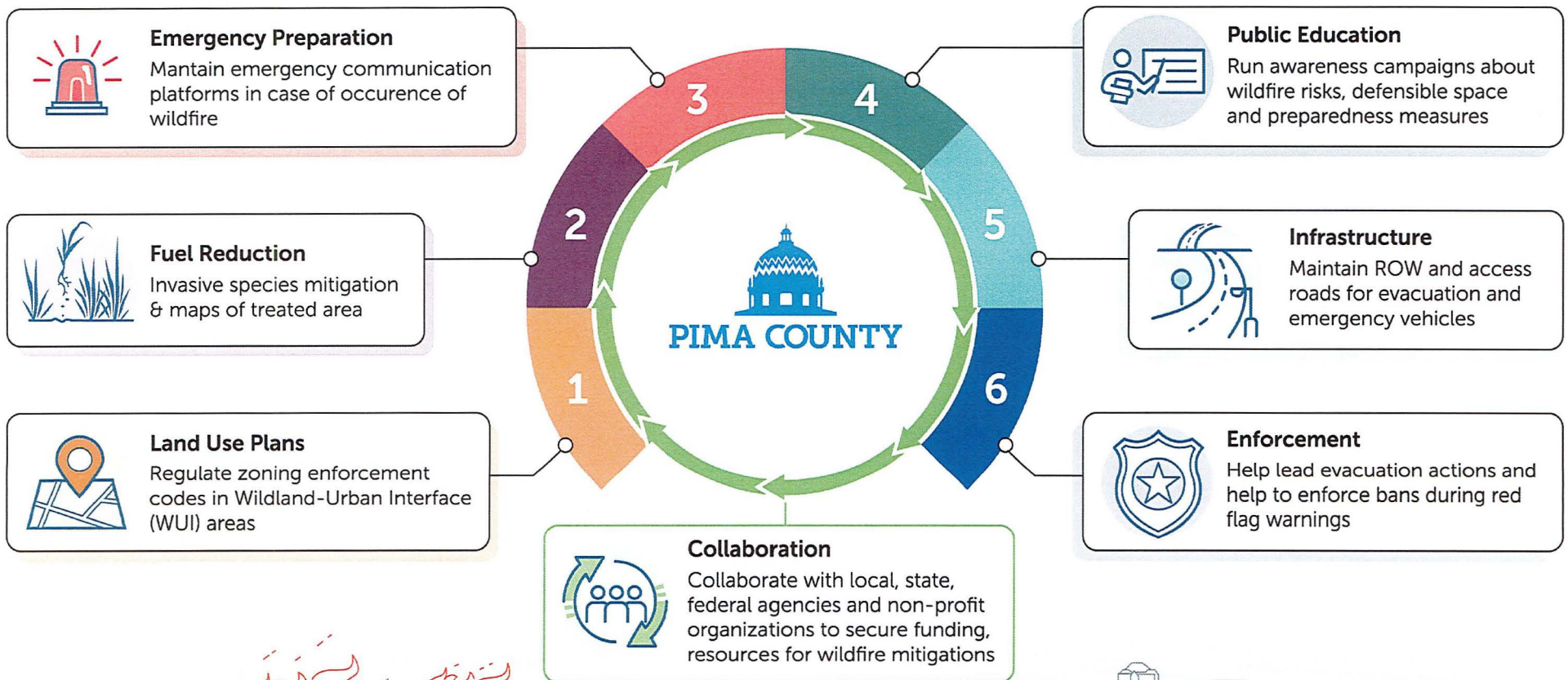
INVENTORY INTERVIEWS



- Informational Technology
- Regional Wastewater Reclamation
- Communications
- Development Services
- Flood Control
- Emergency Management
- Transportation
- Environmental Quality
- Conservation Lands & Resources
- Administration



WILDLAND FIRE: What is in Pima County's lane?



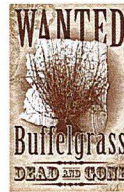


FOCUS AREAS



PREVENTION PUBLIC EDUCATION

Coordinate community outreach and education on wildfire awareness, defensible space and evacuation preparedness.



MITIGATION

Fuel reduction and vegetation management for invasive species.



EMERGENCY RESPONSE

Identify critical emergency response resources and training opportunities.

SAMPLE TASKS

Discovery phase (13)

Yearly invasive risk report

Code Clarifications for Fire Dept/Districts

Defensible space rebate program

Brush/bulky vouchers

Planning phase (18)

Central wildfire education platform

Complimentary WUI building codes

WUI Building codes/permits

High risk WUI area drone imagery

Review phase (20)

Create Yearly prevention messaging calendar

PIO WF safety messaging

Firewise education messaging

RFCD flood risk education



ONGOING ACTIONS

- Create strategic roadmap to complete WMP tasks
- Identify responsible parties and collaboration opportunities
- Identify funding and resource needs
- Develop monitoring and evaluation metrics
- Plan presented to Board of Supervisors on May 6



PIMA COUNTY

THANK YOU!



PIMA COUNTY

Board of Supervisors

Rex Scott, *Chair*, District 1

Adelita S. Grijalva, *Vice Chair*, District 5

Dr. Matt Heinz, District 2

Jennifer Allen, District 3

Steve Christy, District 4

Pima County Administrator

Jan Leshner