



BOARD OF SUPERVISORS AGENDA ITEM REPORT

Requested Board Meeting Date: June 19, 2018

Title: Pima County Designated Management Area Boundary Revision

Introduction/Background:

PAG is in the process of updating the PAG 208 Plan. As part of that process, member jurisdictions were asked to review their facility/other plans and provide updates on facility inventory within their service areas. RWRD on behalf of Pima County has completed this review process. The PAG 208 Plan Update includes an updated Pima County Designated Management Area (DMA) boundary map attached herein. This map recognizes that Pima County in coordination with the Town of Marana request to add the Saguaro Bloom development to the Marana DMA boundary.

Discussion:

The update to the Pima County DMA is a result of the transfer of the Saguaro Bloom development to the Marana DMA boundary as planned in the Marana 208 Amendment and IGA.

Conclusion:

The revised and updated Pima County DMA boundary will supersede the previous Pima County DMA and the Marana DMA boundary.

Recommendation:

Staff recommends approval of the revised Pima County DMA boundary which recognizes the transfer of sewer services for the Saguaro Bloom development from Pima County to the Town of Marana.

Fiscal Impact:

There will not be a fiscal impact on the County.

Board of Supervisor District:

1 2 3 4 5 All

Department: Regional Wastewater Reclamation Department Telephone: _____

Contact: Mirela Hromatka Telephone: 724-6488

Department Director Signature/Date: *Eir Wudniwitt For Jackson Jackson* 6/1/18

Deputy County Administrator Signature/Date: *[Signature]* 6/6/18

County Administrator Signature/Date: *[Signature]* 6/7/18

JUN 06 10 02 07 PCC/KDE/PD *44*



May 4, 2018

Greg Hitt
Program Manager
Pima County Regional Wastewater Reclamation Department

Dear Greg,

Pima Association of Governments (PAG) maintains the Areawide Water Quality Management Plan (208 Plan) for the region. PAG conducts regional wastewater planning in coordination with Pima County as one of the region's three Designated Management Agencies (DMAs) responsible for ensuring that wastewater service is provided in their management areas.

PAG is in the process of updating the PAG 208 Plan to better serve our member jurisdictions with a streamlined and modernized plan. As part of that process we would like to ensure that the wastewater reclamation facility inventory is complete and accurate for your area.

This map recognizes that Pima County in coordination with the Town of Marana request to add the Saguaro Bloom development to the Marana Designated Management Area (DMA) boundary as planned in the Marana 208 Amendment and IGA.

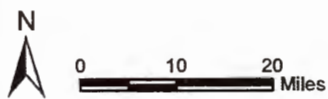
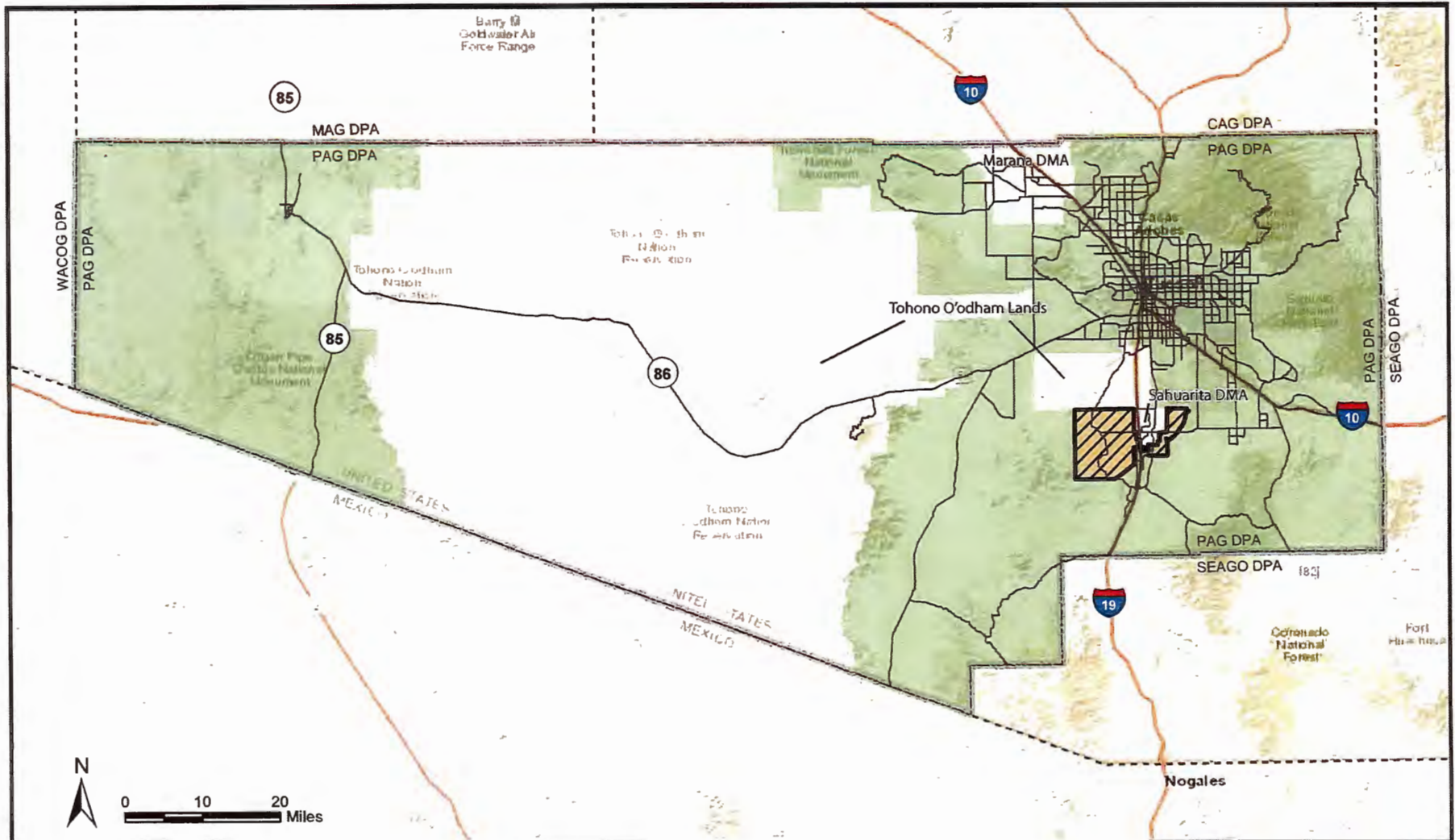
Please review the boundary of the attached DMA map and return the approval signatures for verification purposes to demonstrate that Pima County accepts the Pima County DMA as depicted. Please verify that this is accepted in accordance with all local, state and federal regulations and note that this map subject to adoption of the updated 208 Plan by Regional Council.

Feel free to contact us if you have any questions.

Sincerely,

Mead Mier
Sustainability Coordinator, Watershed Planning Lead
MMier@PAGregion.com
520-792-1093

c: David Adler, PAG Director of Innovation



Legend

- Major Streets
- Pima County/Sahuarita Joint Planning Area
- Pima County DMA
- - - DPA Boundaries

In coordination with the Town of Marana, Pima County requests to add Saguaro Bloom to the Marana Designated Management Area (DMA) boundary.

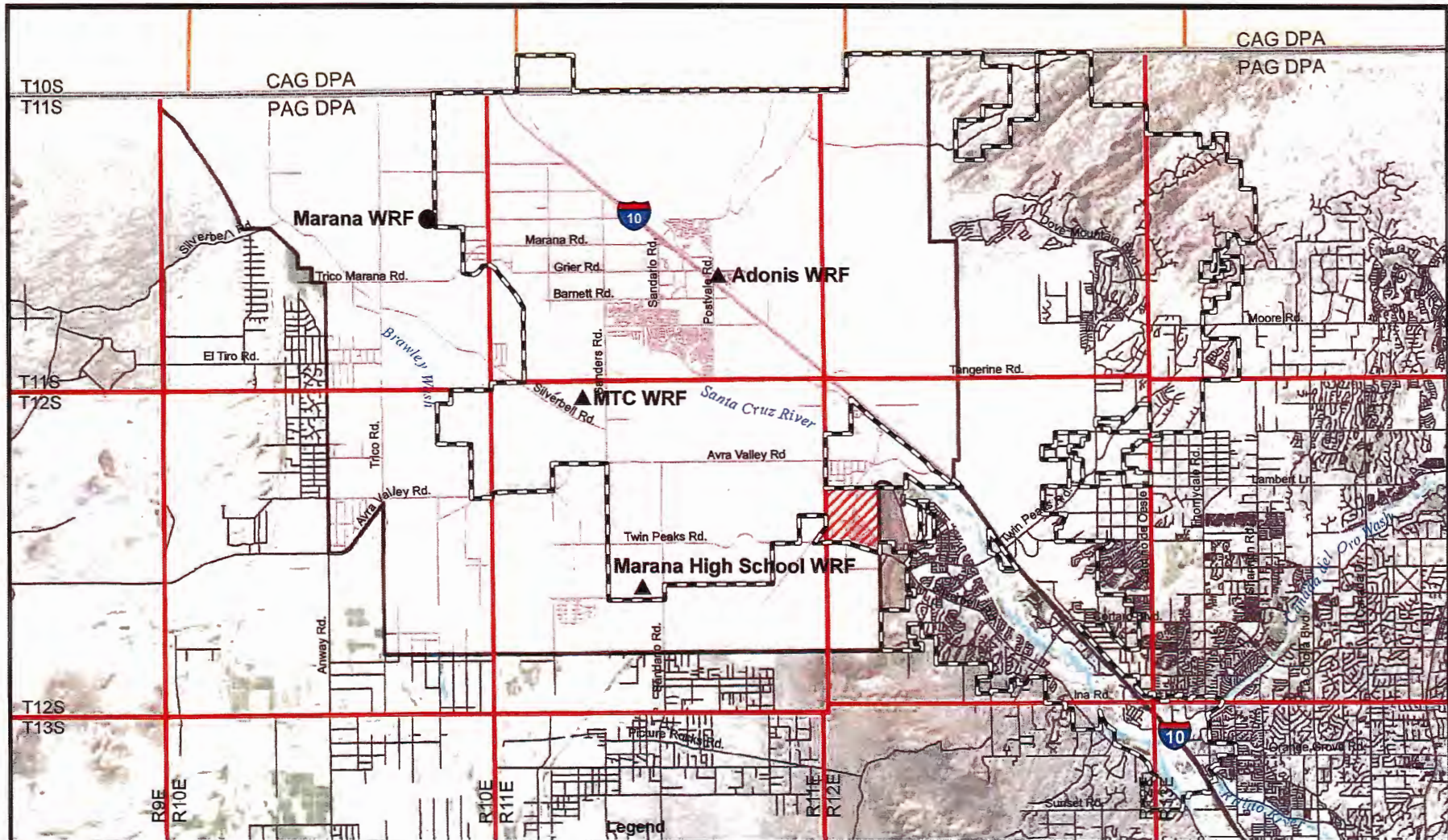
As acted on _____ (Date) by the Board of Supervisors, Pima County accepts the Pima County DMA and Joint Planning Area (JPA) boundary as depicted hereon in accordance with all local, state and federal regulations and subject to adoption of the updated 208 Plan.

_____ (Chair) _____ (Date)



Pima Association of Governments
208 Plan Update

Pima County
 Designated Management Area



Legend

- Public Treatment Facility
- ▲ Private Treatment Facility
- - - Marana Town Limits
- ▭ Marana DMA
- ▭ Pima County DMA
- ▭ CAG 208 Jurisdiction
- ▭ Township and Range
- ▨ Saguro Bloom (added to Marana DMA since 2006)
- Streets
- River/Wash



Pima Association of Governments
208 Plan Update

Detail of Marana DMA Expansion