

BOARD OF SUPERVISORS AGENDA ITEM SUMMARY

Requested Board Meeting Date: February 18, 2014
TRANSPORTATION AGENDA

ITEM SUMMARY, JUSTIFICATION and/or SPECIAL CONSIDERATIONS:

Establishment of public road, this road being:

Hughes Access Road, S. Hughes Access Road and Alvernon Way
Road Establishment No. 3018
Ramon Valadez - District 2

Hearing Date: February 18, 2014

The purpose of Road Proceeding No. 3018 is to establish the relocation of Hughes Access Road, S. Hughes Access Road and Alvernon Way. This establishment would reflect the roadway improvements under Pima County roadway Project Number 4HARDR and Project Name: "Hughes Access Road Relocation."

Permission Granted to Advertise Establishment of Road on January 21, 2014.

CONTRACT NUMBER (If applicable)

STAFF RECOMMENDATION(S): The Transportation Department recommends that the Board of Supervisors approve the establishment of these County roads.

CLERK OF THE BOARD USE ONLY BOS MTG. _____
ITEM NO. _____

PIMA COUNTY COST: \$ 12.7M and/or REVENUE TO PIMA COUNTY \$ _____

FUNDING SOURCE(S): HURF
(i.e. General Fund, State Grant Fund, Federal Fund, Stadium District Fund, etc.)

ADVERTISED PUBLIC HEARING: YES X NO

BOARD OF SUPERVISORS DISTRICT: 1 2 X 3 4 5 All

IMPACT:

IF APPROVED:

Will proceed with the Establishment of Hughes Access Road, S. Hughes Access Road and Alvernon Way.

IF DENIED:

Will not pursue the Establishment of Hughes Access Road, S. Hughes Access Road and Alvernon Way and there will not be a clear delineation of road right-of-way for the relocation of these roads.

DEPARTMENT NAME: Transportation

CONTACT PERSON: Claire Logue

TELEPHONE NO.: 724-6332 ext: 6737

DEPARTMENT DIRECTOR: 

DATE: 1/24/14

RESOLUTION AND ORDER NO. 2014- _____

A RESOLUTION AND ORDER OF THE BOARD OF SUPERVISORS OF PIMA COUNTY, ARIZONA, PROVIDING FOR THE ESTABLISHMENT OF HUGHES ACCESS ROAD, S. HUGHES ACCESS ROAD AND ALVERNON WAY, A COUNTY HIGHWAY SITUATED WITHIN THE INCORPORATED LIMITS OF THE CITY OF TUCSON, SECTIONS 31, 32, 33 AND 28, TOWNSHIP 15 SOUTH, RANGE 14 EAST, GILA AND SALT RIVER MERIDIAN, PIMA COUNTY, ARIZONA.

UNDER PROCEEDING NO. 3018

WHEREAS, the County Engineer has requested that the Pima County Board of Supervisors establish a county highway to be known as Hughes Access Road, S. Hughes Access Road and Alvernon Way located in Sections 31, 32, 33 and 28, Township 15 South, Range 14 East, Pima County, Arizona, pursuant to Arizona Revised Statutes (A.R.S.) Section 28-6701(B), said roads being more fully described in attached Exhibit A, and

WHEREAS, the County Engineer filed a report and map of the proposed highway with the Board in accordance with A.R.S. § 28-6702(1), and

WHEREAS, said petition for establishment was set for a hearing before the Board on February 18, 2014, in accordance with A.R.S. § 28-6703, and

WHEREAS, notice of the hearing was published once a week for two consecutive weeks in a newspaper of general circulation prior to the hearing, and

WHEREAS, at the hearing on the 18th day of February, 2014, the Board considered the feasibility, advantages and necessity of the highway sought to be established and determined the

proposed highway to be a public necessity.

NOW, THEREFORE, IT IS HEREBY RESOLVED THAT:

1. The public roadways described in the attached Exhibit A and commonly referred to as Hughes Access Road, S. Hughes Access Road, Alvernon Way is hereby established as a county highway.
2. The Clerk of the Board is hereby directed to record this Resolution and Order, together with a map of said highway, as Establishment Proceeding No. 3018 in the Office of the Pima County Recorder, Pima County, Arizona.
3. The appropriate County officers and employees are hereby authorized and directed to perform all acts necessary and desirable to give effect to this Resolution.

DONE BY ORDER of the Board of Supervisors of Pima County, Arizona, this 18th day of February, 2014.

Chair
Pima County Board of Supervisors

ATTEST:

Robin Brigode, Clerk of the Board

APPROVED AS TO FORM:


Deputy County Attorney

NOTICE OF PUBLIC HEARING

PIMA COUNTY BOARD OF SUPERVISORS

Notice is hereby given that the Pima County Board of Supervisors will hold a public hearing for the proposed Establishment of Hughes Access Road, S. Hughes Access Road and Alvernon Way these county roads are situated within portions of Section 28, 31, 32, and 33, T15S, R14E, Gila and Salt River Meridian, Pima County, Arizona. MORE PARTICULARLY DESCRIBED AS FOLLOWS:

SEE EXHIBIT "A"

The public hearing for the Establishment of these roads will be held on **Tuesday, February 18th, 2014 at 9:00 A.M.**, or thereafter, located at the Pima County Administration Building, Board of Supervisors Hearing Room, 130 West Congress, 1st Floor, Tucson, Arizona.

A copy of the proposed Establishment for the aforementioned roads can be obtained at the Pima County Department of Transportation, EIM/Mapping and Records; 201 North Stone Avenue, 5th Floor or by calling (520) 724-6332.

Dated this 24th day of JANUARY, 2014



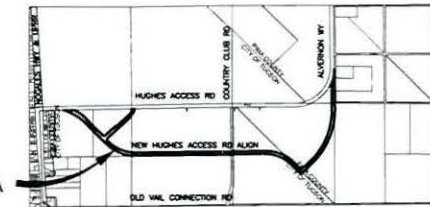
Priscilla S. Cornelio, P.E., Director
Pima County Department of Transportation

Published: Daily Territorial
January 31st and February 7th, 2014

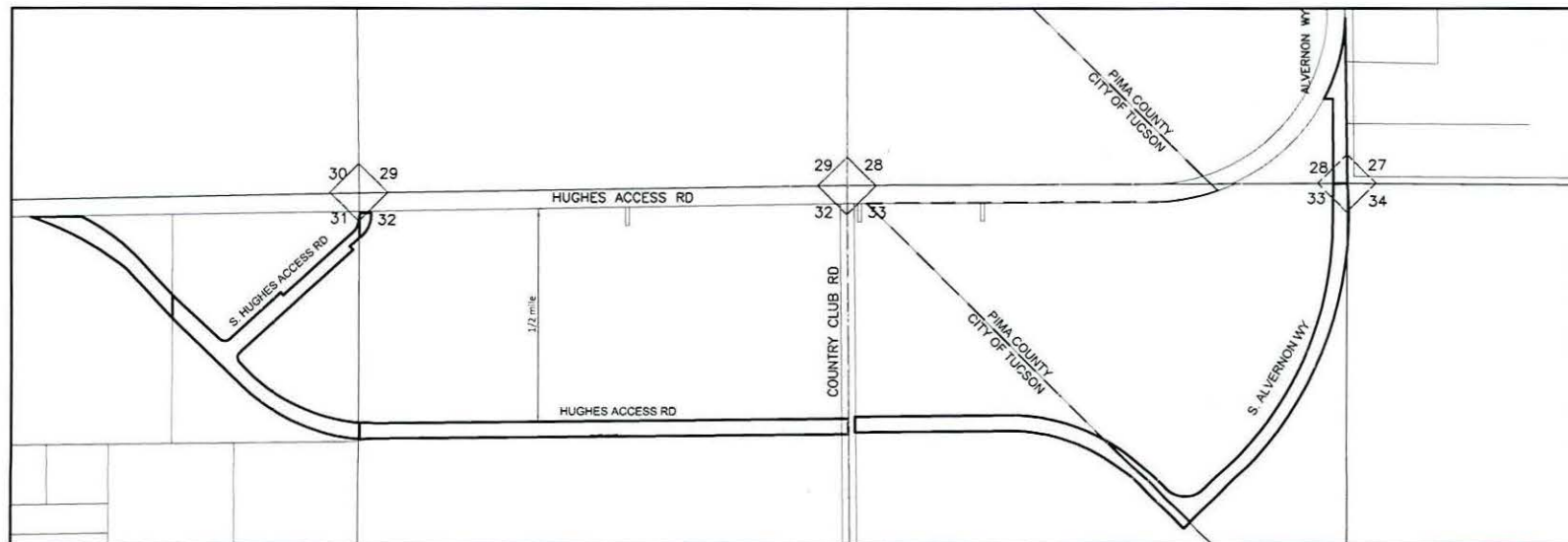
DEPICTION OF "EXHIBIT A"
HUGHES ACCESS RD, S. HUGHES ACCESS RD &
ALVERNON WAY


SEC 28, T15S, R14E
SEC 31, T15S, R14E
SEC 32, T15S, R14E
SEC 33, T15S, R14E

SUBJECT AREA



SECTION 31, 32, 33 & 28
G&SRM
PIMA COUNTY, ARIZONA



 ROAD PROCEEDING ESTABLISHMENT #3018
-- -- -- JURISDICTIONS LINES



3018

PIMA COUNTY DEPARTMENT OF TRANSPORTATION
ENGINEERING INFORMATION MANAGEMENT

DRAWING NOT TO SCALE

DRAWN BY: SRBUTLER

DATE: DEC 2013