



MEMORANDUM

Date: May 23, 2025

To: The Honorable Chair and Members
Pima County Board of Supervisors

From: Jan Leshner 
County Administrator

Re: **Additional Information for the June 3, 2025 Board of Supervisors Meeting – Mobile Unit Deployment Plan**

On March 18, 2025, the Board of Supervisors directed our Public Health Director, Dr. Theresa Cullen, to develop a plan to address schools and childcare locations with low rates of MMR vaccination within 90 days of the issued directive. The Board's directive emphasized the need for a proactive and targeted public health approach to reduce barriers to vaccination and protect our school communities.

The attached plan includes the rationale for this effort along with the school selection and prioritization process. The Health Department will coordinate with schools and stakeholders, manage logistics such as staffing, and parental consent, and ensure data management and outcome reporting. The plan includes cost estimates, funding strategies, and target schools, a prioritization map, and standardized consent forms. The plan begins with a survey to all identified Pima County schools and childcares to assess interest in mobile vaccination services. Sites will be contacted starting on July 1st based on their respective school year start dates.

Mobile clinics are scheduled to begin in late July, aligning with the return to school and back-to-school health efforts. This approach maximizes impact, ensures adequate planning, and allows for effective allocation resources. The Health Department will work closely with school districts and community stakeholders to implement this initiative in a collaborative, efficient, and equitable manner.


JKL/dym

Attachment

c: Carmine DeBonis, Jr., Deputy County Administrator
Steve Holmes, Deputy County Administrator
Terry Cullen, MD, MS, Public Health Director, Health Department

Date: May 23, 2025

To: Jan Lesher
County Administrator

From: Theresa Cullen, MD, MS 
Health Department Director

Re: Pima County Mobile Unit Deployment Plan for MMR Vaccination in Under-Immunized Schools

In response to the Board of Supervisors' directive issued on March 18, 2025, we have developed the attached Mobile Unit Deployment Plan for MMR Vaccination in Under-Immunized Schools aimed at increasing MMR vaccination coverage in Pima County schools with immunization rates below the 95% threshold. The Board emphasized the importance of a proactive and targeted approach to improve vaccine accessibility and protect public health, stating:

“It is essential in Pima County that we take a more proactive and targeted approach to ensure that all the schools in Pima County with vaccination rates below 95% are supported with accessible and convenient vaccination opportunities. To address this growing public health concern, I am proposing that the County establish a program to deploy mobile vaccination units to all Pima County schools with vaccination rates below 95%. The goal is to increase accessibility and eliminate barriers to vaccination, thereby improving overall immunization rates and protecting public health.”

In alignment with this guidance, the proposed plan outlines a phased outreach strategy, beginning with a survey to all Pima County school districts. The purpose of the survey is to assess interest in mobile vaccination services and logistical feasibility, taking into account the staggered reopening schedules of districts beginning in late summer. Districts with earlier start dates will receive surveys on July 1st, while those with later start dates will receive surveys in mid-July.

Vaccine mobile clinics will be scheduled starting in late July, aligning with the start of the new academic year and maximizing impact during back-to-school health initiatives. This approach ensures adequate planning, collaboration with school partners, and effective allocation of mobile unit resources.

We are committed to working closely with school districts and community stakeholders to implement this initiative efficiently and equitably.

Please see the attached plan for detailed information on school prioritization, operational logistics, and progress monitoring.

TC/cr

Attachment

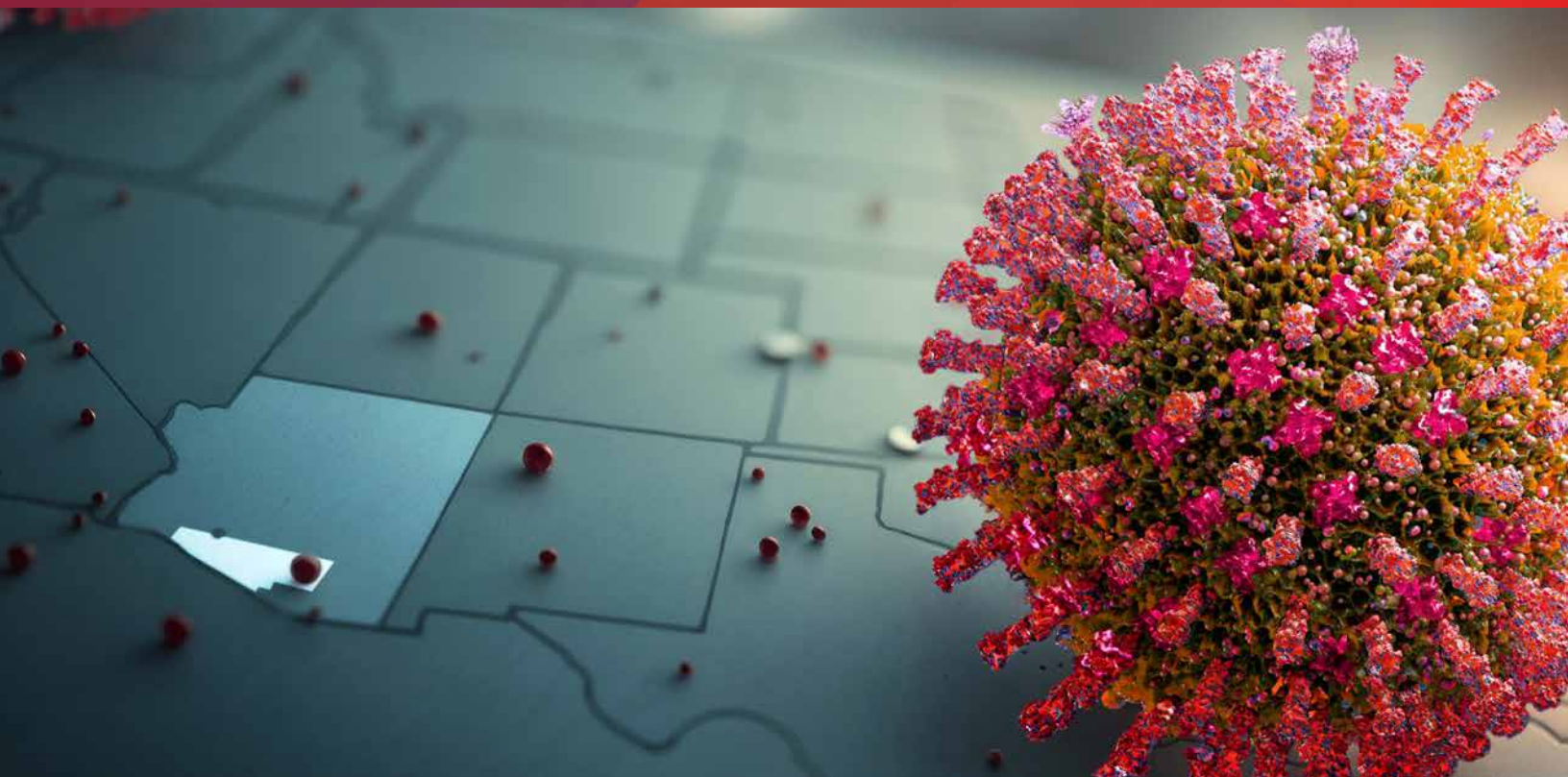
c: Steve Holmes, Deputy County Administrator



PIMA COUNTY
HEALTH DEPARTMENT

Mobile Unit Deployment Plan for MMR Vaccination in Under-Immunized Schools

May 2025



PIMA COUNTY, ARIZONA
2025

Table of Contents

Background	3
About the MMR Vaccine	3
Implementation Plan	4
School Selection Process	4
School Prioritization Process Map	4
Rationale and benefits of prioritization process	5
Analysis of Data Used for Selection	5
Coordination with Schools and Stakeholders	6
Parental Consent and Outreach	7
Mobile Unit Logistics and Staffing	8
Cold Storage and Handling	8
Data Management	8
Monitoring and Reporting	9
Expected Outcomes	9
Cost of Mobile Outreach	9
Funding and Resource Allocation	10
Conclusion	10
Appendices	11
Appendix 1: List of schools with low rates of MMR coverage	11
Appendix 2: School Prioritization Map	17
Appendix 3: Standard vaccine consent form	18
Appendix 4: PCHD Policy: Obtaining Consent for Minors to Receive Vaccines	19

Objective

To increase MMR (measles, mumps, and rubella) vaccination in school-aged children in Pima County (< 95% MMR uptake) by deploying Pima County Health Department (PCHD) mobile units preferentially to the schools with the lowest rates of measles immunization, the lowest rates of exemptions and highest number of unimmunized students.

Background

Recent immunization data indicate that several schools in Pima County have MMR coverage rates below the recommended threshold for herd immunity (95%). Schools with low immunization rates are particularly vulnerable to the rapid spread of vaccine-preventable diseases. Low vaccination rates increase the risk of outbreaks and pose a public health threat to students, staff, and the broader community.

PCHD proposes to create a focused mobile unit initiative to provide convenient, on-site vaccinations in schools with the lowest immunization rates. By bringing vaccinations directly to schools and childcares, the initiative aims to reduce barriers to access, improve immunization coverage, foster trust, and enhance overall community protection against measles and other vaccine-preventable diseases.

Estimated Number of Children in Pima County by Age Band (2020 Census)

Age Group	Approximate Number of Children	Source
Preschool (Under 5)	48,041	U.S. Census Bureau QuickFacts: Pima County, AZ
Kindergarten (5 years)	~11,929	Estimated from Census data
6th Grade (11 years)	~11,865	Estimated from Census data

About the MMR Vaccine

The MMR vaccine is a safe and highly effective vaccine that protects against three serious diseases: measles, mumps, and rubella. These diseases can lead to severe complications, especially in children, including pneumonia, brain swelling, hearing loss, and birth defects if contracted during pregnancy. The MMR vaccine is one of the most studied vaccines in the world and has been used safely for over thirty years.

Clinical studies and real-world population data consistently show that the MMR vaccine is highly effective. Two doses provide about 97% protection against measles, 88% against mumps, and nearly 97% against rubella. The vaccine works by stimulating the body's immune system to build defenses against these viruses without causing illness. Most children experience only mild side effects, such as a sore arm, low-grade fever, or temporary rash.

The Centers for Disease Control and Prevention (CDC) recommend that children receive the first dose of the MMR vaccine at 12–15 months of age and the second dose at 4–6 years. In school settings, ensuring that children are up to date on their MMR vaccination is critical to preventing outbreaks and protecting those who cannot be vaccinated due to medical reasons. Providing the MMR vaccine through mobile clinics increases access for families and helps communities maintain high levels of protection against these preventable diseases.

Implementation Plan

School Selection Process

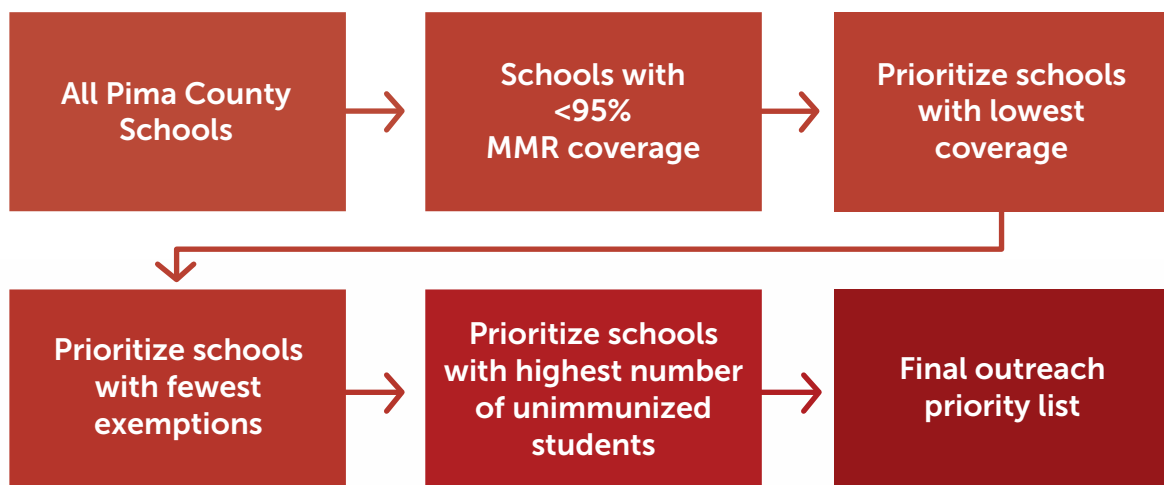
Data source: Outreach priorities were identified using [immunization data from the Arizona Department of Health Services \(ADHS\)](#) for the 2023–2024 school year.

Initial filtering: All schools in Pima County with MMR vaccination rates below 95% were identified for potential outreach, aligning with the herd immunity threshold recommended by the CDC.

Ranking and Prioritization: The filtered list of schools was ranked using a multi-step process to target those with the highest risk for potential measles outbreaks:

- Percentage of MMR Coverage (ascending)
Schools with the lowest vaccination rates were prioritized first.
- Percentage of Exemptions (ascending)
Among low-coverage schools, preference was given to those with fewer exemptions, suggesting greater potential for increasing coverage.
- Number of Unimmunized Students (descending):
Within the above, schools with the highest number of unimmunized students were prioritized.

School Prioritization Process Map



Rationale and benefits of prioritization process

Impact: By prioritizing outreach to schools with the lowest MMR coverage and highest numbers of unimmunized students, the outreach plan targets areas where measles transmission risk is greatest.

Resource allocation: Allows teams to focus on communities where immunization rates are more likely to improve through education and outreach.

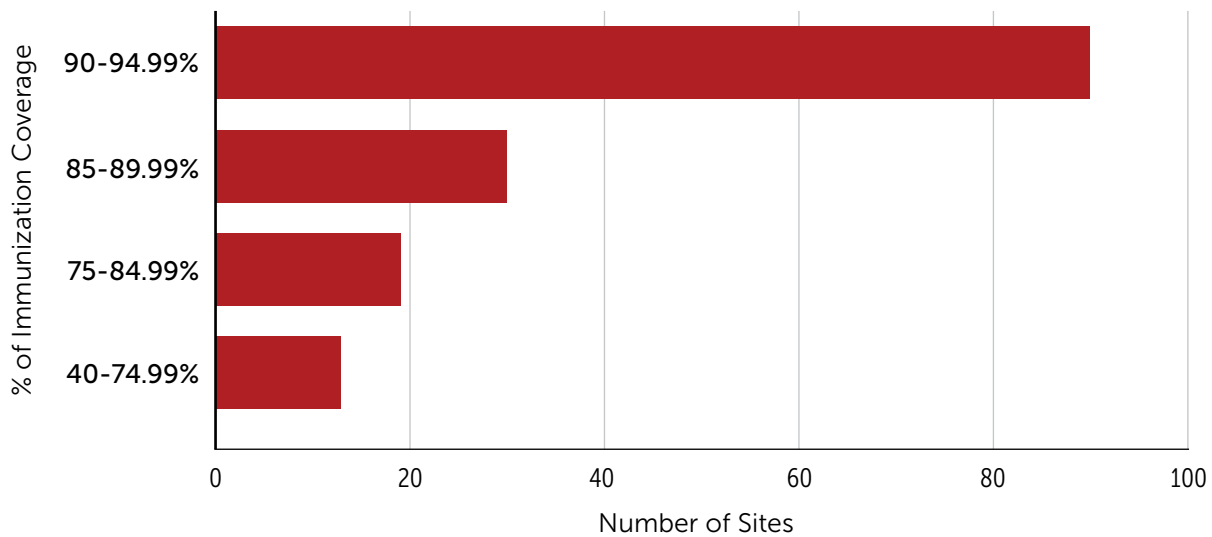
Transparent and replicable: The multi-step sorting approach provides a clear, systematic framework that can be reused in future years or adapted for other vaccines.

Promotes equity: Resources are directed to schools with the highest rates of vulnerability, helping close immunization gaps and reduce disparities.

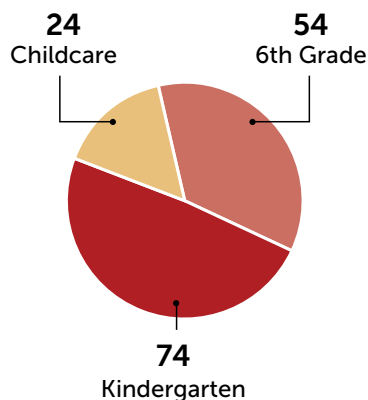
Analysis of Data Used for Selection

For complete list of low-coverage schools, see Appendix 1

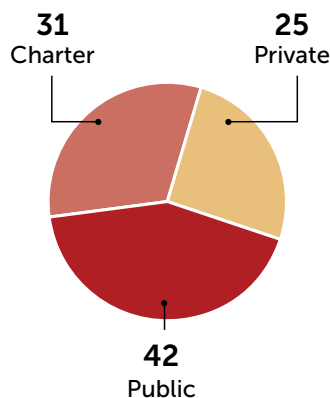
Number of Sites by Coverage Rate



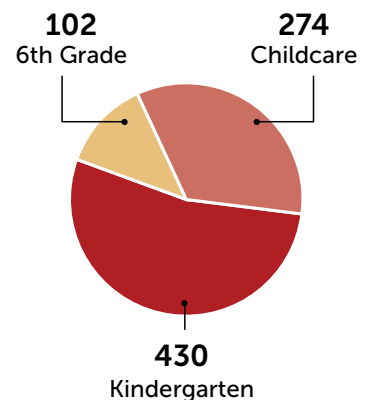
Number of Sites <95% by Grade



School Types



Number of Students by Grade



Coordination with Schools and Stakeholders

All communications will be sent to senior level school personnel to assist with engagement and recruitment of individual school sites.

PCHD Youth and School Communities Team will work closely with Pima County Superintendent of Schools, Dustin J. Williams, for all information dissemination related to this effort.

1. **District-based schools:** PCHD Youth and School Communities Team will communicate with District Superintendents via Pima County Superintendent Dustin J. Williams and will rely on the assistance of District Superintendents to connect PCHD with the appropriate personnel at school sites identified for this effort.
2. **Public/private charter schools:** PCHD Youth and School Communities Team will communicate directly with site leads of public/private charter school sites identified for this effort.

Initial Outreach via Survey

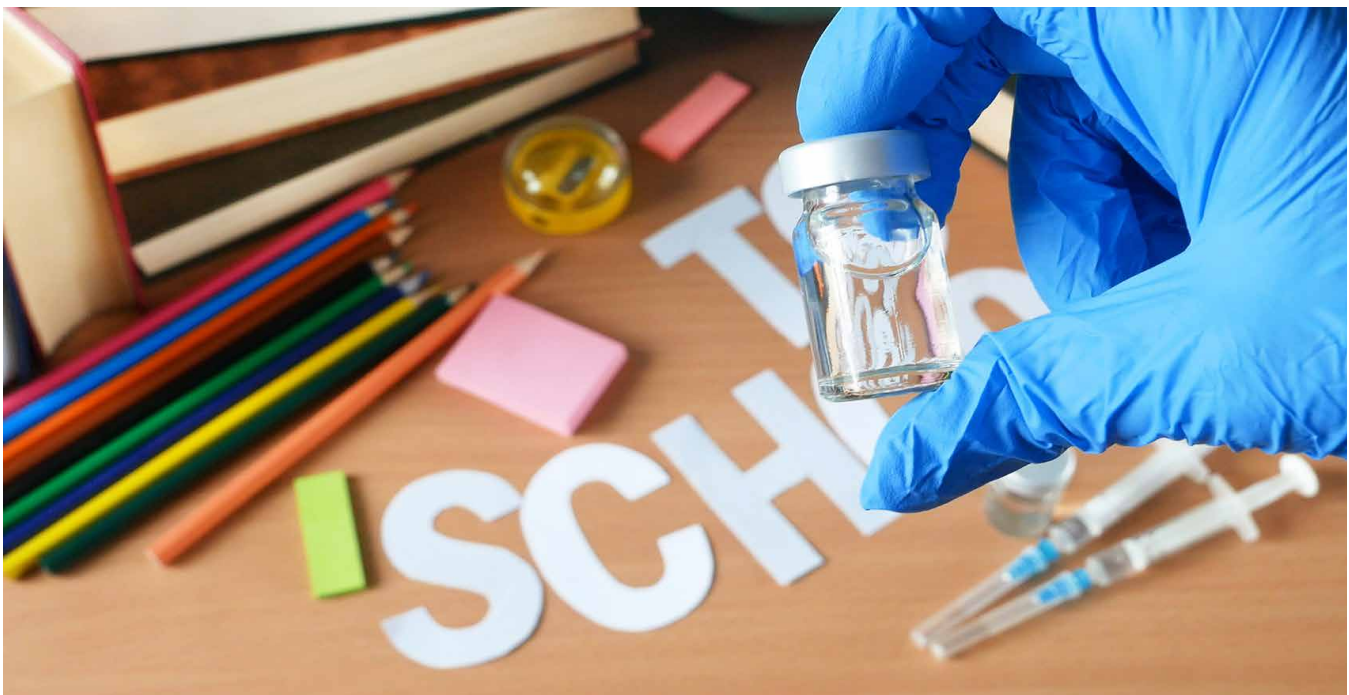
- o A digital survey will be distributed to schools using the existing contact list maintained by the PCHD Youth and School Communities Team.
- o The survey will gather information on school interest in hosting on-site MMR vaccination clinics and what resources would be needed to ensure success.
- o Schools will also have the opportunity to provide updated data if their internal school-based MMR vaccination rates are higher than those reflected in the state Immunization Data Report.

Follow-Up with Survey Non-Responders

1. For schools that do not respond to the survey within two weeks, PCHD will follow up directly via phone and/or email.
2. Direct outreach will help assess interest and identify any barriers or concerns schools may have regarding participation.

PCHD will collaborate with administrators and health staff to schedule mobile clinic visits for schools that opt in to host a mobile vaccination event.

PCHD will engage with parent-teacher organizations (PTOs) and community leaders to promote participation.



Parental Consent and Outreach

Send vaccine information in advance:

- Collaborate with PCHD Youth and School Communities Team to develop communication materials pertaining to mobile clinics.
- Distribute vaccine fact sheets and consent forms to parents/guardians at least one week before the mobile clinic date. Refer to Appendix 2 for PCHD consent form.
- Materials should include at a minimum: vaccine benefits and risks, clinic details, and contact info for questions.

Provide culturally appropriate materials:

- Ensure all consent, promotional materials and fact sheets are available in the primary languages spoken in the home (e.g., English, Spanish, etc.).
- Use plain language and culturally appropriate terms to improve understanding.

Accept multiple forms of consent in accordance with PCHD policy, "Obtaining Consent for Minors to Receive Vaccines." See Appendix 3.

- Accept written consent forms returned to the school or clinic.
- Accept verbal consent via phone or in person, documented by staff and logged with date/time, name of consenting adult, relationship to student and phone number.
- Accept written consent from parent/guardian who is not on-site. This can be in the form of a letter written/typed and signed by the parent or guardian.
- Proof of parent/guardian status will not be required for vaccination.

Vaccinating children without a parent on site:

- Children can be vaccinated without a parent or guardian physically present, as long as valid consent is obtained in advance.
- Parents will be strongly encouraged to attend, especially for younger children, to provide support and ask questions.
- PCHD Staff will be trained to provide comfort and reassurance to children receiving vaccines alone.

Day-of-event consent support

- Have multilingual staff or language line translation services available at the clinic site to address last-minute questions or concerns.
- Keep extra consent forms and fact sheets on hand for families who were not able to consent in advance.



Mobile Unit Logistics and Staffing

Model I: PCHD Staff Only

- o Deploy PCHD mobile units staffed with trained immunization nurses and administrative personnel.
- o It is difficult to assess the demand for on-site vaccination events. The project may have 5 – 25 schools express an interest in hosting a vaccine event.
 - Mobile vaccine events will be planned using greatest need, geographic proximity, and promotion of equity.
- o During clinic closure days, each clinical team will be tasked with visiting two schools to provide mobile vaccination. Closure days are as follows:
 - North Clinic: Tuesdays
 - East Clinic: Wednesdays
 - Theresa Lee Clinic: Thursdays
- o Staffing will consist of 1-2 nurses and 1-2 administrative staff.

Model II: PCHD Staff Augmented with Contract Staff

- o Deploy PCHD-staffed mobile units as referenced in Model I.
- o In addition to PCHD clinic teams, two contracted nurses will be deployed to support school outreach. The addition of two fulltime immunization nurses would double mobile capacity.

Cold Storage and Handling

To ensure the safety and effectiveness of the MMR vaccine during mobile clinics, all storage and handling practices will follow the CDC's Vaccine Storage and Handling Toolkit guidelines.

- The MMR vaccine will be maintained within the recommended temperature range using the Vericor mobile cooler system, which is designed for reliable, field-ready vaccine transport.
- Digital data loggers will be used to continuously monitor and record temperatures, providing real-time assurance that cold chain integrity is maintained from clinic deployment to vaccine administration.

Data Management

- The county electronic health record system (eCW) interfaces with the Arizona State Immunization Information System (ASIS). After administration, immunization information is digitally transferred to the patient's ASIS record.
- Demographic information including insurance eligibility is collected and stored in eCW and transfers over to ASIS in terms of VFC eligibility.
- Parents/Guardians will have an opportunity to schedule follow up for any other needed vaccine doses for their child at the time of administration.
- Parents/guardians will be given a copy of the student's ASIS record with newly administered doses identified/
- Automated appointment reminders will be sent through the electronic health record appointment reminder system.
- School administration and health office staff will be encouraged to provide dose reminder notifications for the students at each school
- School staff will be required to retain immunization administration records, update school electronic health records and complete yearly Immunization Data Reports (IDR) by November 15th based on the most current record for each child.
- PCHD public health nurses/immunization program staff will offer technical assistance to school health office staff regarding completion of yearly IDRs to ensure quality data reporting.

Monitoring and Reporting

- **Maintain a centralized tracker to include:**
 - Number of students vaccinated per clinic
 - Date of event
 - No-show rates
 - Schools that declined participation and reasons why
- **Disaggregate data by grade level and school type (public, charter, private, preschool) to identify gaps or areas of high success.**
- **Provide quarterly updates to the Pima County Board of Supervisors with:**
 - Summary statistics and regional trends
 - Highlights of successful school partnerships
 - Identified barriers and proposed solutions
- **Adjust outreach strategies based on:**
 - Participation rates (e.g., low sign-up schools targeted with direct follow-up or alternate engagement methods)
 - Feedback from school staff, parents, and mobile clinic teams
 - Emerging public health data or changes in MMR vaccination requirements

Expected Outcomes

- Engagement with community and family members
- Increased MMR vaccination rates in schools with low vaccine coverage, reducing the risk of outbreaks and associated school absences.
- Improved accessibility to vaccinations for families facing barriers to healthcare.
- Strengthened partnerships between PCHD, schools, and communities to promote immunization.
- Enhanced parental and family knowledge on MMR vaccine benefits and safety.

Cost of Mobile Outreach

- To execute the MMR mobile school vaccination plan, we anticipate servicing 5 –25 schools (maximum of 153), with each school event requiring approximately 3 hours.
- Staffing for each event will include one to two nurses and one to two administrative personnel. Using the average hourly wage of \$34.62 for RNs and \$17.88 for support staff, the total personnel cost for covering ten outreach events would be approximately \$2,100 per team (1 RN with 2 support staff).

Funding and Resource Allocation

- Explore partnerships with local healthcare providers for additional staffing and resources.
- Vehicle assigned to each clinic for outreach to schools.
- Ancillary IT equipment redeployed from mobile units – printers, scanners, Mi-Fis.
- If demand exceeds capacity of redeployed clinic staff, we would request that contracted nurses be hired and deployed to augment mobile outreach.

Conclusion

The deployment of Pima County Health Department mobile units would increase MMR vaccination coverage among school-aged children – particularly in underserved areas identified through regional data analysis. By leveraging existing infrastructure, School Health Team collaboration, and MRCSA volunteer support, we would be able to increase our regional capacity to ensure access immunizations in the community.



Appendices

Appendix 1: List of schools with low rates of MMR coverage

Childcare Kindergarten 6th grade

% Vaccinated	% Exempt MMR	School Name	School Type	Address
41.67%	0.00%	Second Street Children's School	Private	2430 E. 2nd Street, Tucson, AZ 85719
53.33%	0.00%	Tucson Hebrew Academy	Private	3888 E. River Road, Tucson, AZ 85718
53.33%	26.67%	Christ Lutheran Vail Church Early Care And Education	Private	14600 E. Colossal Cave Rd, Vail, AZ 85641
58.33%	41.67%	Desert Christian K-8 School - E Wrightstown Rd	Private	9415 E. Wrightstown Rd, Tucson, AZ 85715
64.29%	35.71%	Faith Community Academy - 85741	Private	2551 W. Orange Grove Rd, Tucson, AZ 85741
64.29%	35.71%	Tanque Verde Lutheran Church Preschool & Kindergarten	Private	8625 E. Tanque Verde Rd, Tucson, AZ 85749
66.67%	33.33%	St Andrews Preschool & Kindergarten	Private	7650 N. Paseo Del Norte, Tucson, AZ 85704
66.67%	33.33%	Tucson Waldorf School	Private	3605 E. River Rd, Tucson, AZ 85718
69.23%	30.77%	Tucson Waldorf School	Private	3605 E. River Rd, Tucson, AZ 85718
73.33%	6.67%	Leman Virtual Academy	Charter	6188 E. Pima St, Tucson, AZ 85712
73.58%	1.89%	J Robert Hendricks Elementary School	Public	3400 W. Orange Grove Rd, Tucson, AZ 85741
73.58%	22.64%	Casas Christian School	Private	10801 N La Cholla Blvd, Tucson, AZ 85742
73.68%	0.00%	Nosotros Academy	Charter	440 North Grande Avenue, Tucson, AZ 85745
75.00%	25.00%	Lulu Walker Developmental Preschool	Preschool	1750 W. Roller Coaster Road, Tucson, AZ 85704
75.00%	25.00%	Adventure School - E Placita Sin Nombre	Charter	1950 E Placita Sin Nombre, Tucson, AZ 85718
75.00%	25.00%	Pusch Ridge Christian Academy Upper School	Private	9500 N Oracle Rd, Tucson, AZ 85704
76.19%	23.81%	Leman Virtual Academy	Charter	6188 E. Pima St, Tucson, AZ 85712
76.47%	0.00%	Kidzco Early Learning Center/ Stone	Preschool	1609 N Stone Ave, Tucson, AZ 85705
76.79%	1.79%	Naylor Middle School	Public	1701 S Columbus Blvd, Tucson, AZ 85711
76.92%	7.69%	La Paloma Academy - Marana	Charter	13644 N Sandario Rd, Marana, AZ 85653
78.57%	21.43%	Hermosa Montessori School	Charter	12051 E Fort Lowell Rd, Tucson, AZ 85749
78.95%	5.26%	Calvary Chapel Christian School	Private	8725 E Speedway Blvd, Tucson, AZ 85710
78.95%	21.05%	Community Christian Preschool Of Marana	Preschool	13610 N Sandario Rd, Marana, AZ 85653
80.00%	20.00%	Casas Christian School	Private	10801 N La Cholla Blvd, Tucson, AZ 85742

% Vaccinated	% Exempt MMR	School Name	School Type	Address
81.97%	0.00%	La Paloma Academy - Central	Charter	2050 N Wilmot Rd, Tucson, AZ 85712
82.05%	17.95%	Desert Christian Pre-School	Preschool	9415 E Wrightstown Rd, Tucson, AZ 85715
82.69%	17.31%	Tucson Waldorf School	Preschool	3605 E. River Rd, Tucson, AZ 85718
83.33%	8.33%	Children Reaching For The Sky Preparatory	Charter	1852 S Alvernon Way, Tucson, AZ 85711
83.33%	10.42%	Tucson Community School	Preschool	2109 E Hedrick Dr, Tucson, AZ 85719
83.33%	16.67%	Khalsa Montessori School - River Rd	Charter	3701 E River Rd, Tucson, AZ 85718
83.75%	11.25%	Leman Academy Of Excellence Central Tucson	Charter	6188 E Pima St, Tucson, AZ 85712
84.21%	14.04%	Family Life Academy	Preschool	530 S Pantano Rd, Tucson, AZ 85710
85.11%	14.89%	Faith Community Academy Preschool	Preschool	2551 W Orange Grove Rd, Tucson, AZ 85741
85.29%	14.71%	Anna Henry Elementary School	Public	650 N Igo Way, Tucson, AZ 85710
85.29%	14.71%	Hermosa Montessori School	Charter	12051 E Fort Lowell Rd, Tucson, AZ 85749
85.42%	2.08%	Academy Of Tucson Middle School	Charter	7310 E 22nd Street, Tucson, AZ 85710
85.71%	0.00%	Frances J Warren Elementary School	Public	3505 W Milton Rd, Tucson, AZ 85746
85.71%	9.52%	Learning Bee Preschool & Day Care Center	Preschool	3975 E 22nd Street, Tucson, AZ 85711
85.71%	14.29%	Imagine Preschool At Wilson K8	Preschool	2330 W Glover Rd, Oro Valley, AZ 85742
86.11%	13.89%	Pusch Ridge Christian Academy Upper School	Private	9500 N Oracle Rd, Tucson, AZ 85704
86.27%	9.80%	Lamb's Gate Christian School	Preschool	4700 N Swan Rd, Tucson, AZ 85718
86.36%	13.64%	Real Kids Preschool	Preschool	3353 N Houghton Rd, Tucson, AZ 85749
86.67%	3.33%	J Robert Hendricks Elementary School	Public	3400 W. Orange Grove Rd, Tucson, AZ 85741
86.67%	13.33%	Castlehill Country Day School	Private	3225 N Craycroft Rd, Tucson, AZ 85712
86.84%	13.16%	Ironwood Elementary School - Tucson	Public	3300 W Freer Dr, Tucson, AZ 85742
87.50%	10.00%	Redeemer Lutheran Preschool	Preschool	8845 N Silverbell Rd, Tucson, AZ 85743
87.88%	0.00%	Roadrunner Elementary School-85653	Public	16651 W Calle Carmela, Marana, AZ 85653
88.10%	9.52%	Beautiful Savior Academy Preschool	Preschool	7570 N Thornydale Rd, Tucson, AZ 85741
88.24%	0.00%	Imagine Preschool At Rio Vista Elementary	Preschool	1351 E Limberlost Dr, Tucson, AZ 85719
88.24%	5.88%	Little Lions Preschool	Preschool	3901 W Linda Vista Blvd, Tucson, AZ 85742
88.24%	11.76%	Ascension Lutheran School	Private	1220 W Magee Rd, Tucson, AZ 85704

Childcare Kindergarten 6th grade

% Vaccinated	% Exempt MMR	School Name	School Type	Address
88.57%	11.43%	Rio Vista Elementary School	Public	1351 w Limberlost Dr, Tucson, AZ 85719
88.75%	5.00%	Marjorie W Estes Elementary School	Public	11280 W Grier Rd, Marana, AZ 85623
88.85%	0.00%	Tucson Jewish Community Center - Early Childhood	Preschool	3800 E River Rd, Tucson, AZ 85718
88.89%	11.11%	Great Expectations Academy	Charter	1446 W Camino Antigua, Sahuarita, AZ 85629
88.89%	11.11%	Small World Preschool 2 - 85710	Preschool	8720 E Speedway Blvd, Tucson, AZ 85710
89.06%	1.56%	Butterfield Elementary School - Tucson	Public	3400 W Massingale Rd, Tucson, AZ 85741
89.41%	1.18%	Twin Peaks Elementary School	Public	7995 W Twin Peaks Rd, Tucson, AZ 85743
89.47%	10.53%	Family Life Academy	Private	530 S Pantano Rd, Tucson, AZ 85710
89.47%	10.53%	Satori Charter School 2-8th	Charter	3727 N 1st Ave, Tucson, AZ 85719
89.66%	3.45%	Picture Rocks Elementary School	Public	5875 N Sanders Rd, Tucson, AZ 85743
89.77%	3.41%	Quail Run Elementary School - Tucson	Public	4600 W Cortaro Farms Rd, Tucson, AZ 85742
90.00%	10.00%	First Impressions Preschool And Daycare Center	Preschool	655 S Craycroft Rd, Tucson, AZ 85711
90.11%	3.30%	Acacia Elementary School - Vail	Public	12955 e Colossal Cave Rd, Vail, AZ 85641
90.24%	2.44%	Erik Hite Foundation Child Care Center	Preschool	9420 E Golf Links Rd, Tucson, AZ 85730
90.24%	8.94%	Legacy Traditional School - Northwest Tucson	Charter	3500 W Cortaro Farms Rd, Tucson, AZ 85742
90.28%	9.72%	Happy Trails School	Preschool	3255 N Campbell Ave, Tucson, AZ 85719
90.32%	0.00%	John E Wright Elementary School	Public	4311 E Linden St, Tucson, AZ 85712
90.32%	9.68%	Copper Creek Elementary School	Public	11620 N Copper Spring Trl, Tucson, AZ 85737
90.32%	9.68%	Mesa Verde Elementary School	Public	1661 W Sage St, Tucson, AZ 85704
90.32%	9.68%	Saint Elizabeth Ann Seton School	Private	8650 N Shannon Rd, Tucson, AZ 85742
90.35%	5.26%	Leman Academy Of Excellence - Oro Valley	Charter	12255 N La Canada Dr, Oro Valley, AZ 85755
90.48%	4.76%	Rattlesnake Ridge Elementary	Public	8500 N Continental Reserve Loop, Tucson, AZ 85743
90.63%	6.25%	Saint Michael's Parish Day School	Private	602 N Wilmot Rd, Tucson, AZ 85711
90.70%	6.98%	Leman Academy Of Excellence - La Canada	Preschool	12255 N La Cananda Dr, Oro Valley, AZ 85755
90.91%	2.27%	E C Nash School	Public	515 W Kelso St, Tucson, AZ 85705

% Vaccinated	% Exempt MMR	School Name	School Type	Address
90.91%	5.45%	Sunshine School In Oro Valley, Inc.	Preschool	9000 N Oracle Rd, Tucson, AZ 85704
90.91%	9.09%	Calvary Chapel Christian School	Private	8725 E Speedway Blvd, Tucson, AZ 85710
91.11%	4.44%	Rattlesnake Ridge Elementary	Public	8500 N Continental Reserve Loop, Tucson, AZ 85743
91.11%	8.89%	Hermosa Montessori School	Preschool	12051 E Ft lowell Rd, Tucson, AZ 85749
91.18%	0.00%	Vail Academy & High School	Charter	7762 E Science Park Dr, Tucson, AZ 85747
91.30%	4.35%	Saint Joseph Catholic School	Private	215 S Craycroft Rd, Tucson, AZ 85711
91.35%	0.00%	Cottonwood Elementary School - 85747	Public	9950 E Rees Loop, Tucson, AZ 85747
91.36%	2.47%	Kids First Preschool & Childcare Center	Preschool	5316 E Pima St, Tucson, AZ 85712
91.43%	5.71%	Sonshine Preschool And Child Care	Preschool	551 N Camino Seco, Tucson, AZ 85710
91.60%	6.87%	Kids City Christian Preschool	Preschool	10801 N La Cholla Blvd, Oro Valley, 85742
91.67%	0.00%	Redeemer Lutheran School	Private	8845 N Silverbell Rd, Tucson, AZ 85743
91.67%	8.33%	St Paul's United Methodist Preschool	Preschool	8051 E Broadway Blvd, Tucson, AZ 85710
91.67%	8.33%	Redeemer Lutheran School	Private	8845 N Silverbell Rd, Tucson, AZ 85743
91.84%	6.12%	Christ Lutheran Vail Church Early Care And Education	Preschool	14600 E Colossal Cave Rd, Vail, AZ 85641
92.00%	8.00%	Sonoran Science Academy - Tucson	Charter	2325 W Sunset Rd, Tucson, AZ 85741
92.11%	7.89%	Kidzco Early Learning Center -Golf Links Rd	Preschool	7845 E Golf Links Rd, Tucson, AZ 85730
92.31%	0.00%	Saint Mark's Early Childhood Center	Private	1431 W MAgee Rd, Tucson, AZ 85704
92.31%	0.00%	Drexel Elementary School	Public	801 W Drexel Rd, Tucson, AZ 85706
92.31%	3.85%	Desert Spring Children's Center	Preschool	740 E Speedway Blvd, Tucson, AZ 85719
92.31%	7.69%	First Southern Christian School	Preschool	445 E Speedway Blvd, Tucson, AZ 85705
92.31%	7.69%	Montessori Schoolhouse-85719	Charter	1301 E Ft Lowell Rd, Tucson, AZ 85719
92.31%	7.69%	Innovation Academy K-5 Stem School	Public	825 W Desert Fairways Dr, Oro VALley, AZ 85755
92.45%	7.55%	Academy Of Math And Science - Prince Rd	Charter	1557 W Prince Rd, Tucson, WA 85705
92.59%	7.41%	Our Mother Of Sorrows Extend Daycare	Preschool	1800 S Kolb Rd, Tucson, AZ 85710
92.63%	2.11%	Mesquite Elementary School - Tucson	Public	9455 E Rita Rd, Tucson, AZ
92.73%	1.82%	Pusch Ridge Preschool	Preschool	10361 N Oracle Rd, Tucson, AZ 85737

% Vaccinated	% Exempt MMR	School Name	School Type	Address
92.75%	7.25%	Leman Academy Of Excellence Central Tucson	Charter	6188 E Pima Rd, Tucson, AZ 85712
92.86%	0.00%	Holsclaw Family Child Care Center	Preschool	222 N Church Ave, Tucson, AZ 85701
92.86%	3.57%	W Arthur Sewel Elementary School	Public	425 N Sahuara Ave, Tucson, AZ 85711
92.86%	4.08%	Leman Academy Of Excellence East Tucson	Preschool	10100 E Golf Links Rd, Tucson, AZ 85730
92.86%	7.14%	Mis Manos Montessori School	Preschool	100 W magee Rd, Tucson, AZ 85704
92.86%	7.14%	Painted Sky Elementary School	Public	12620 N Woodburne Ave, Oro VALley, AZ 85755
93.10%	2.30%	Catalina Hills Preschool	Preschool	4440 N Campbell Ave, Tucson, AZ 85718
93.10%	3.45%	Second Street Children's School	Preschool	2430 E 2nd ST, Tucson, AZ 85719
93.20%	1.94%	Ocotillo Ridge Elementary	Public	10170 S White Lightning Ln, Vail, AZ 85641
93.33%	1.67%	Ocotillo Elementary School	Public	10170 S White Lightning Ln, Vail, AZ 85641
93.33%	2.22%	Coronado K-8 School	Public	3401 E Wilds Rd, Tucson, AZ 85739
93.33%	6.67%	Los Amigos Child Care & Activity Center	Preschool	1300 W Saint Marys Rd, Tucson, AZ 85745
93.33%	6.67%	Painted Hills Preschool, Llc	Preschool	*Permanently CLOSED*
93.38%	6.62%	Leman Academy Of Excellence - East Campus	Charter	10100 E Golf Links Rd, Tucson, AZ 85730
93.55%	2.15%	Dove Mountain K-8	Public	5650 W Moore Rd, Marana, AZ 85658
93.59%	0.00%	Academy Of Math And Science - Prince Rd	Charter	1557 W Prince Rd, Tucson, AZ 85705
93.75%	0.00%	Paulo Freire Freedom School - E University Blvd	Charter	300 W University Blvd Ste 10, Tucson, AZ 85705
93.75%	0.00%	Presidio School	Charter	1695 E Ft Lowell Rd, Tucson, AZ 85719
93.75%	4.17%	Irene Erickson Elementary School	Public	6750 E Stella Rd, Tucson, AZ 85730
93.75%	6.25%	Faith Lutheran Church School & Preschool	Preschool	3925 E 5th St, Tucson, AZ 85711
93.75%	6.25%	Satori School - Prek - 3801	Preschool	3801 N 1st Ave, Tucson, AZ 85719
93.75%	6.25%	Immaculate Heart Academy	Private	410 W Magee Rd, Tucson, AZ 85704
93.75%	6.25%	Frances Owen Holaway Elementary School	Public	3500 N Cherry Ave, Tucson, AZ 85719
93.84%	6.16%	St Andrews Preschool & Kindergarten	Preschool	7650 N Paseo Del Norte, Tucson, AZ 85704
93.90%	6.10%	Shepherd's Fold Preschool & Daycare	Preschool	1111 N La Canada Dr, Green Valley, AZ 85614
93.92%	6.08%	Legacy Traditional School - Northwest Tucson	Charter	3500 W Cortaro Farms Rd, Tucson, AZ 85742
93.92%	1.10%	Casita Daycare & Preschool	Preschool	1440 W Ajo Way, Tucson, AZ 85713
93.94%	3.03%	Ajo Elementary School	Public	111 N Well Rd, Ajo, AZ 85321

Childcare Kindergarten 6th grade

% Vaccinated	% Exempt MMR	School Name	School Type	Address
93.94%	3.03%	Raul Grijalva Elementary School	Public	1795 W Drexel Rd, Tucson, AZ 85746
94.00%	2.00%	Math And Science Success Academy	Charter	434 W lerdo Rd Ste 6655, Tucson, AZ 85706
94.12%	0.00%	Nosotros Academy	Charter	440 N Grande Ave, Tucson, AZ 85745
94.12%	5.88%	Desert Vista Early Learning Center - Tucson	Preschool	5901 S Calle Santa Cruz, Tucson, AZ 85709
94.12%	5.88%	Vail Innovation Center	Public	10775 E Mary Ann Cleveland Way, Tucson, AZ 85747
94.12%	5.88%	Castlehill Country Day School	Preschool	3225 N Craucroft Rd, Tucson, AZ 85712
94.12%	5.88%	Laura N. Banks Elementary	Public	3200 S Lead Flower Ave, Tucson, AZ 85735
94.12%	5.88%	Robles Elementary School	Public	9875 S Sasabe Rd, Tucson, AZ 85736
94.12%	5.88%	Coyote Trail Elementary School	Public	8000 N Silverbell Rd, Tucson, AZ 85743
94.32%	0.00%	Los Amigos Elementary School	Public	2200 E Drexel Rd, Tucson, AZ 85706
94.34%	1.89%	Lulu Walker School	Public	1750 W Roller Coaster Road, Tucson, AZ 85704
94.34%	3.77%	Senita Valley Elementary School	Public	10750 E Bilby Rd, Tucson, AZ 85747
94.41%	4.97%	Basis - Tucson Middle School	Charter	5740 E River Rd, Tucson, AZ 85750
94.44%	0.00%	Ajo Elementary Preschool	Preschool	111 N Well Rd, Ajo, AZ 85321
94.44%	5.56%	Gracepointe Christian Academy	Preschool	2555 W Valencia Rd, Tucson, AZ 85746
94.44%	5.56%	Imagine Preschool At Walker Elementary	Preschool	1750 W Roller Coaster Rd, Tucson, AZ 85704
94.44%	5.56%	Academy Of Tucson Elementary School	Charter	9209 W Wrightstown Rd, Tucson, AZ 85715
94.59%	5.41%	A.v.s.d.#51 - Robles Elementary Preschool	Preschool	9875 S Sasabe Rd, Tucson, AZ 85736
94.74%	5.26%	Esmond Station School	Public	9400 S Atterbury Wash Way, Tucson, AZ 85747
94.83%	5.17%	Casa Ninos School Of Montessori Broadway	Preschool	8655 E Broadway Blvd, Tucson, AZ 85710
94.87%	0.00%	La Paloma Academy - Central	Charter	2050 N Wilmot Rd, Tucson, AZ 85712
94.87%	5.13%	V.u.s.d. #20 - Desert Willow Early Childhood	Preschool	9400 E Esmond Loop, Tucson, AZ 85747

Appendix 3: Standard vaccine consent form



Immunization Consent Form INFORMATION AND CONSENT FORM

Name: _____ Date of Birth: ____/____/____ Age: _____
(Last, First) (Month/Day/Year)
 Address: _____ Phone #: _____
(Street, City, State, Zip)

Primary Language: <input type="checkbox"/> English <input type="checkbox"/> Other: _____ <input type="checkbox"/> Spanish _____		Assigned Gender: <input type="checkbox"/> Male <input type="checkbox"/> Other: _____ <input type="checkbox"/> Female _____		Preferred Pronouns: <input type="checkbox"/> He/Him <input type="checkbox"/> They/Them <input type="checkbox"/> She/Her <input type="checkbox"/> Other: _____		Are you a veteran?: <input type="checkbox"/> Yes <input type="checkbox"/> No	
Race: <input type="checkbox"/> Black or African American <input type="checkbox"/> White <input type="checkbox"/> American Indian or Alaskan <input type="checkbox"/> Middle Eastern or North African <input type="checkbox"/> Other/Unknown: _____ <input type="checkbox"/> Asian <input type="checkbox"/> Native Hawaiian or Pacific Islander _____				Ethnicity: <input type="checkbox"/> Hispanic or Latino _____ <input type="checkbox"/> Not Hispanic or Latino _____ <input type="checkbox"/> Other/Unknown: _____			
EMERGENCY CONTACT:		Name: _____ <small>(Last, First)</small>		Relationship: _____		Phone#: _____	

Office Use Only	ASIS Checked: _____	Insurance checked: _____	Immunization Record: _____
------------------------	---------------------	--------------------------	----------------------------

If you answer "yes" to any question, it does not mean you shouldn't get vaccinated today. We just have more questions to ask.				Yes	No	Do Not Know
1. Are you sick today?						
2. Do you have allergies to medications, food, a vaccine component, or latex?						
3. Have you ever had a serious reaction after receiving a vaccine?						
4. Do you have any of the following: a long-term health problem with heart, lung, kidney, or metabolic disease (e.g., diabetes), asthma, a blood disorder, no spleen, a cochlear implant, or a spinal fluid leak? Are you on long-term aspirin therapy?						
5. For babies: Have you ever been told the child had intussusception?						
6. For babies: Did the birth mother receive a dose of Respiratory Syncytial Virus (RSV) vaccine during pregnancy? If yes: Date: _____ Week of gestation: _____						
7. For children: Has the child, a sibling, or a parent had a seizure; has the child had a brain or other nervous system problem?						
8. Do you have cancer, leukemia, HIV/AIDS, or any other immune system problem?						
9. Do you have a parent, brother, or sister with an immune system problem?						
10. In the past 6 months, have you taken medications that affect your immune system, such as prednisone, other steroids, or anticancer drugs; drugs for the treatment of rheumatoid arthritis, Crohn's disease, or psoriasis; or have you had radiation treatments?						
11. Have you had a seizure or a brain or other nervous system problem?						
12. Have you ever been diagnosed with a heart condition (myocarditis or pericarditis) or have you had Multisystem Inflammatory Syndrome (MIS-A or MIS-C) after an infection with the virus that causes COVID-19?						
13. In the past year, have you received immune (gamma) globulin, blood/blood products, or an antiviral drug?						
14. Are you pregnant?						
15. Have you received any vaccinations in the past 4 weeks?						
16. Have you ever felt dizzy or faint before, during, or after a shot?						

SIGNATURE STATEMENT BOX <input type="checkbox"/> I have been given a copy and read: 1. Vaccine Information Statements 2. Emergency Use Authorization 3. FDA Fact Sheet for Recipients and Caregivers 4. Notice of Privacy Practices 5. Patient Rights			<input type="checkbox"/> I have had the chance to ask questions; and received answers. <input type="checkbox"/> I understand the benefits and risks of the vaccine and approve it being given to me or the person I am authorized to act for. <input type="checkbox"/> I have been instructed to remain on site for 15 minutes after I receive the vaccine; or 30 minutes if I've previously had an anaphylactic reaction.	<input type="checkbox"/> I agree to release my vaccine information to the Arizona State Immunization System (ASIS) and other health care providers or insurance agencies in order to: - Avoid unnecessary vaccination - Make sure my health record is updated - Ensure accurate billing	Insurance benefits: <input type="checkbox"/> I allow Pima County Health Department (PCHD) to receive any insurance or third-party benefits available for the health care services provided to me. <input type="checkbox"/> I understand PCHD can refuse or accept the benefits. <input type="checkbox"/> I agree to send PCHD all health insurance or third-party payments I receive for these services immediately when received.
--	--	--	--	--	--

By signing, I acknowledge all of the above statements.

 Date Print Name X _____
Patient or Parent/Guardian Signature



VERBAL CONSENT FROM PHONE:	Parent name	Parent phone number	Verbal consent given (time) (date)	Employee recording consent
-----------------------------------	-------------	---------------------	------------------------------------	----------------------------

4486794-051425-D1-CBC

*This form is also available in Spanish.

Appendix 4: PCHD Policy: Obtaining Consent for Minors to Receive Vaccines

Pima County Health Department Program Policies and Procedures	
How Often PPP Needs to be Reviewed for Revisions: Annual	
Applies to: Clinical Services	
Authored by: Crystal Rambaud	
Subject: Obtaining Consent for Minors Receiving Vaccinations	CS-PPP NO. IMM-02
Approved by: Andrew Saal, MD MPH Andrew Saal, MD MPH Assistant Medical Director for Pima County Health Department	Approval Date: May 2, 2025

A. STATEMENT OF PURPOSE

To define acceptable forms of consent for unaccompanied minors who request vaccination.

Reference:

[CDC Requirements and Laws](#)

[ADHS Arizona Immunization Handbook](#)

Definitions:

Authorized adult: Any adult acting as a Power of Attorney for a minor or a case where another adult may be acting in a legal capacity on behalf of a patient.

Consent: Approval of an individual to perform a service.
To review

Emancipated Minor: Emancipated minors can consent to medical care without parental consent or knowledge. An emancipated minor is individual under 18 who has a court-issued Declaration of Emancipation.

Minors receiving services under Title X: Two vaccines are recognized as preventing STIs and are thus considered in scope as part of the Title X program – HPV and Hepatitis B.

Minor: Any individual legally under the age of 18 is considered a minor.

Parent/Guardian: (from AZ Immunization Handbook)

The definition of a “parent” is “the natural or adoptive mother or father, a legal guardian appointed by a court, or a “custodian” as defined in A.R.S. 8-201. A parent is a person generally recognized as having care and decision-making responsibility for the child. Providers should use reasonable judgment but may accept as stated by the minor or the adult that the adult is the minor’s parent or legal guardian, without requiring formal documentation of that status

B. POLICY

All staff is expected to follow the Pima County and Health Department’s procedures as related to consenting minors for vaccination services.

Consenting Minors**C. PROCEDURE**

The vaccinating agency must go to reasonable lengths to obtain consent from a parent or guardian for any minor attempting to receive an age-approved vaccination. Forms of acceptable consent include:

- Written consent. Written consent includes a signature from the parent or guardian on an appropriate vaccine administration consent form. Written consent may be accepted on a printed or electronic medium.
- Written consent from a parent or guardian who is not on site with the minor. This can be in the form of a letter written/typed and signed/dated by the parent or guardian. The acceptance of a letter of consent must be documented by the vaccinating agency and the letter should be retained with the patient record. Written consent is only acceptable if signed and dated in the last two weeks. If consent was signed outside the two week window, verbal consent must be obtained.
- Verbal consent provided by a parent or guardian who is physically present with the minor at the vaccine site. Acceptance of verbal consent must be documented by the vaccinating agency. Documentation of verbal consent should include name, relationship and phone number of the person issuing consent.
- Verbal consent may also be obtained over the phone from a parent or guardian if the minor is accompanied by another adult as designated by the parent or guardian. Acceptance of verbal consent must be documented by the vaccinating agency. Documentation of verbal consent should include name, relationship and phone number of the person issuing consent.

Additional considerations:

- Emancipated minors can consent for themselves if they can provide proof of legal emancipation.
- A minor receiving Title X services may request and receive the HPV and Hepatitis B vaccines following education.
- Any of the above forms of acceptable consent can be given by an authorized adult.
- Proof of parent/guardian status will not be routinely requested. However, it can be requested if there are concerns about the safety or wellbeing of the minor.
- Minors experiencing homelessness can have consent issued by a legal authority responsible for care or organization overseeing care, authorizing consent for reception of an age-approved vaccine. A minor experiencing homelessness can also receive vaccination if reasonable attempts have been made to obtain consent by the vaccinating provider.

Original Date: 08/09/2021
Revised Date: 5/2/2025

Consenting Minors

- Providers should use reasonable judgment but may accept as stated by the minor, parent, or guardian that the minor is the age reported without requiring formal documentation of birthdate.

Documentation:

Consent forms should include: demographics (name, address, DOB), medical screening questions, space for parent/guardian signature and space for vaccinator to note date, lot number and type of vaccine.

Consent forms should be accompanied by appropriate vaccine information statements (VIS) for fully approved vaccines or FDA Fact Sheet for Recipients and Caregivers for vaccines on an Emergency Use Authorization. All documentation should be provided in multiple languages as needed for patient comfort and comprehension.

Consent forms should be retained with patients records for six (6) years in accordance with Arizona State law.

Managing emergencies:

Defer to “Management of Reactions” standing order for management of medical emergencies for minors and adults. In case of adverse reaction in a minor, ensure immediate notification of on-site emergency response and parents or guardians.



PIMA COUNTY

Board of Supervisors

Rex Scott, *Chair*, District 1
Jennifer Allen, *Vice Chair*, District 3
Dr. Matt Heinz, District 2
Steve Christy, District 4
Andrés Cano, District 5

Pima County Administrator

Jan Leshner