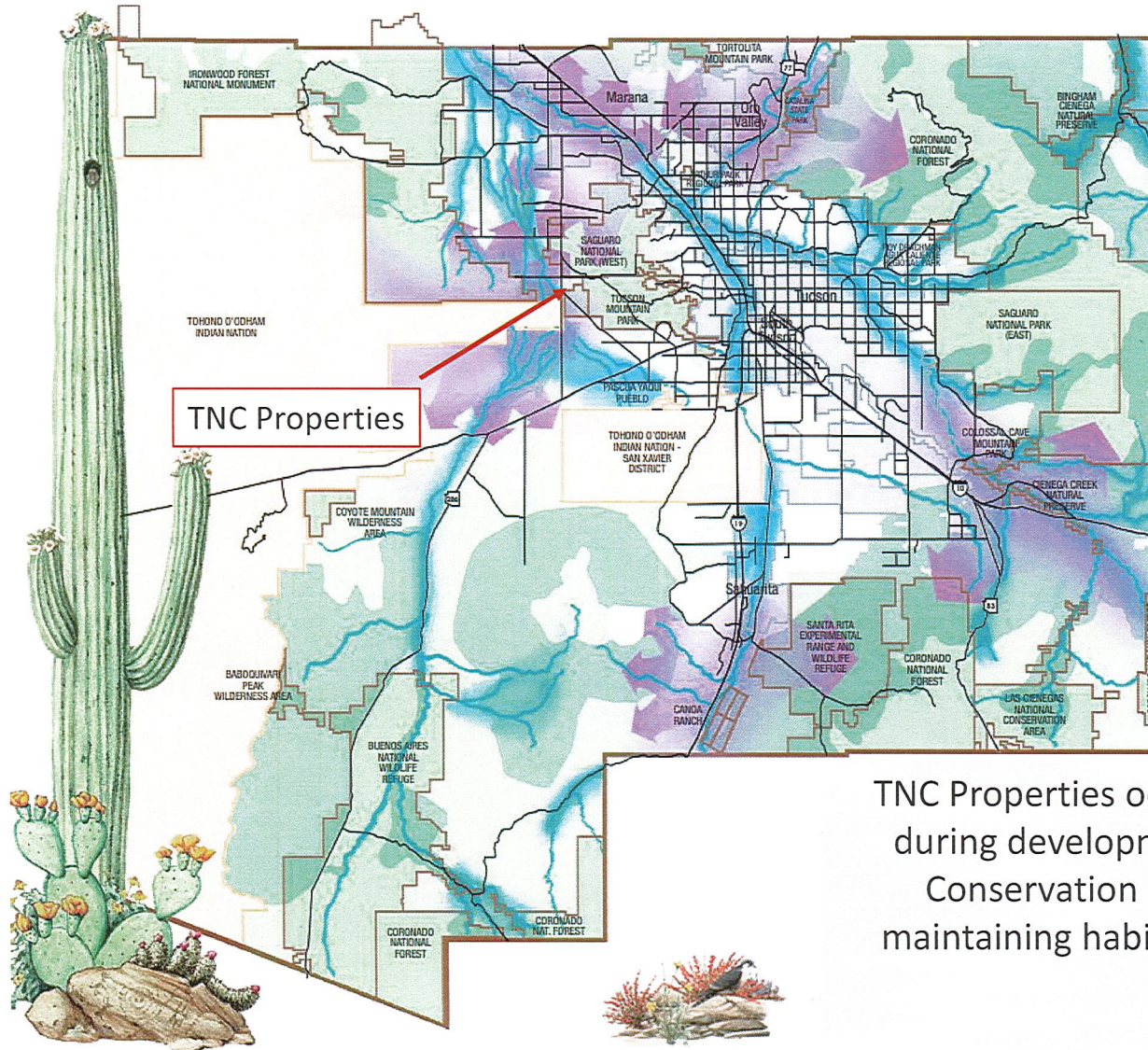


AGENDA MATERIAL

DATE 2-7-23 ITEM NO. RA 31



SONORAN DESERT CONSERVATION PLAN

BIOLOGICAL CORRIDORS AND CRITICAL HABITAT

The work on the biological corridors and critical habitat element of the Sonoran Desert Conservation Plan revealed that biology is the basis for all other elements. The strong interconnections of all five elements is critical in forming a viable land management plan that ensures continuing biodiversity for Pima County.

LEGEND

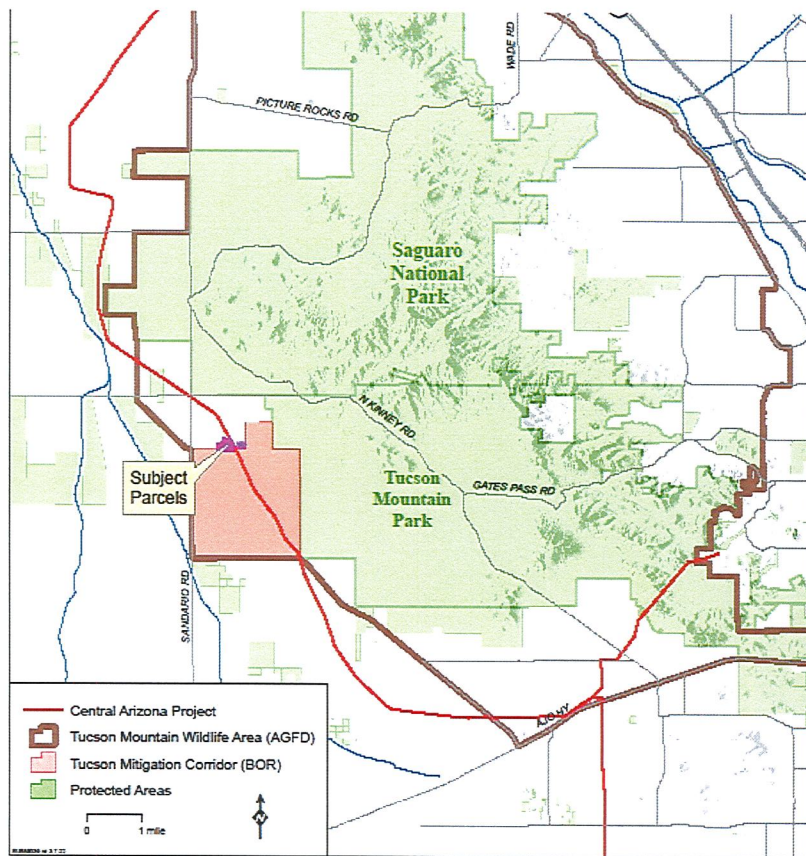
- Important Riparian Areas
- Biological Core Areas
- Multiple Use Areas
- Wildlife Corridors

TNC Properties occur in a location recognized during development of the Sonoran Desert Conservation Plan for its importance in maintaining habitat connectivity and wildlife corridors.

FEB 07 23 AM 03:45 POC CLK OF BD

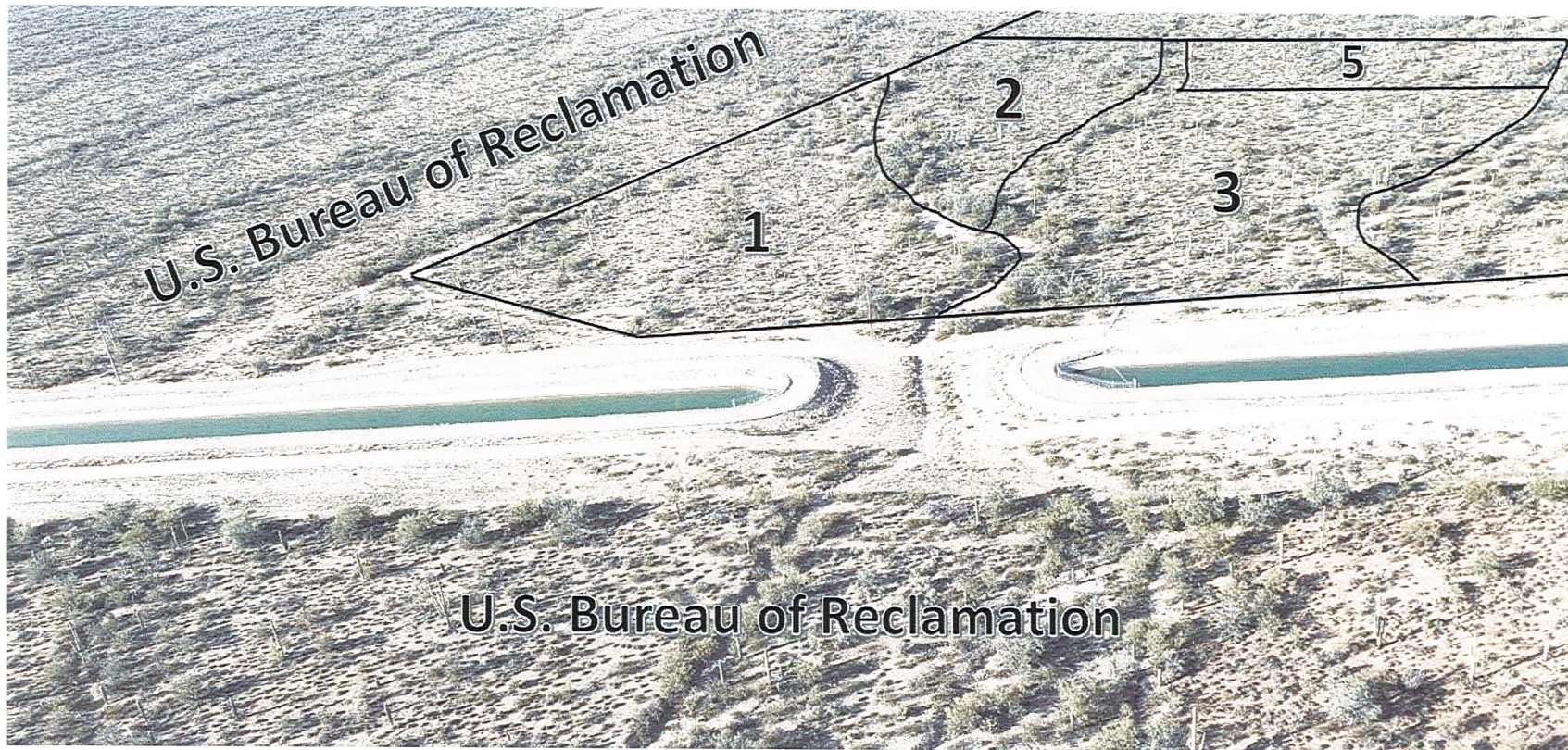
Acquisition of TNC Properties

protects one of the few constructed wildlife crossings over the CAP



Acquisition of TNC Properties

provides an undeveloped corridor connecting federally conserved land



2020 aerial showing TNC Properties' (1,2,&3) relationship to BOR Tucson Mitigation Corridor

Acquisition of TNC Properties

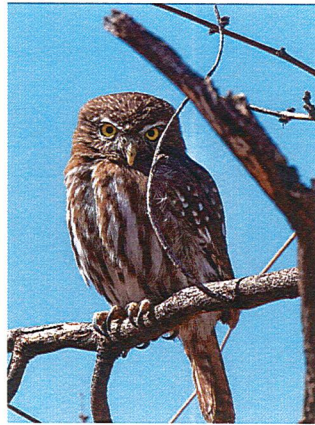
maintains habitat & dispersal corridors for MSCP Covered Species (pygmy-owl, Sonoran desert tortoise, Tumamoc globeberry) and other important native species such as bighorn sheep.



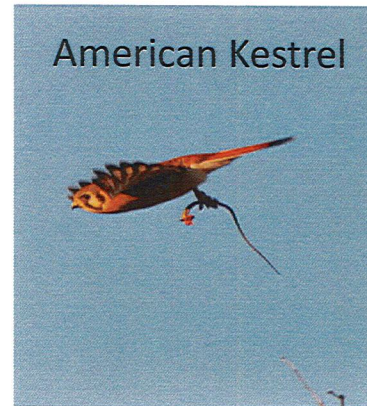
Species known to use or expected to use the TNC Properties and CAP wildlife crossing



Sonoran desert tortoise



Cactus ferruginous pygmy-owl



Tumamoc globeberry



American Badger



Desert mule deer



Javelina



Young bighorn rams that used CAP wildlife crossings to enter the Tucson Mitigation Corridor.