

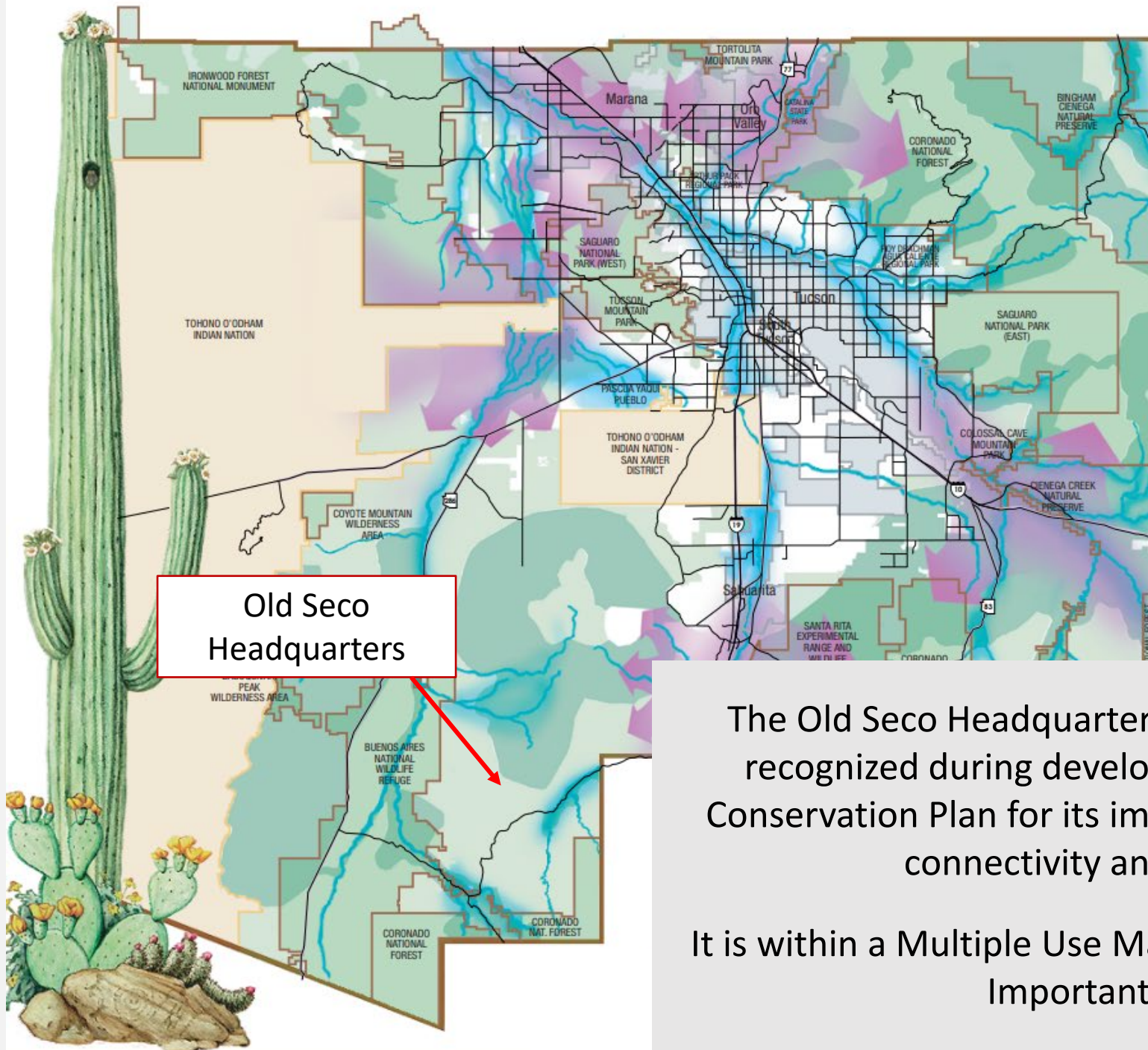
SONORAN DESERT CONSERVATION PLAN

BIOLOGICAL CORRIDORS AND CRITICAL HABITAT

The work on the biological corridors and critical habitat element of the Sonoran Desert Conservation Plan revealed that biology is the basis for all other elements. The strong interconnections of all five elements is critical in forming a viable land management plan that ensures continuing biodiversity for Pima County.

LEGEND

- Important Riparian Areas
- Biological Core Areas
- Multiple Use Areas
- Wildlife Corridors



The Old Seco Headquarters property occurs in a location recognized during development of the Sonoran Desert Conservation Plan for its importance in maintaining habitat connectivity and wildlife corridors.

It is within a Multiple Use Management Area and includes an Important Riparian Area

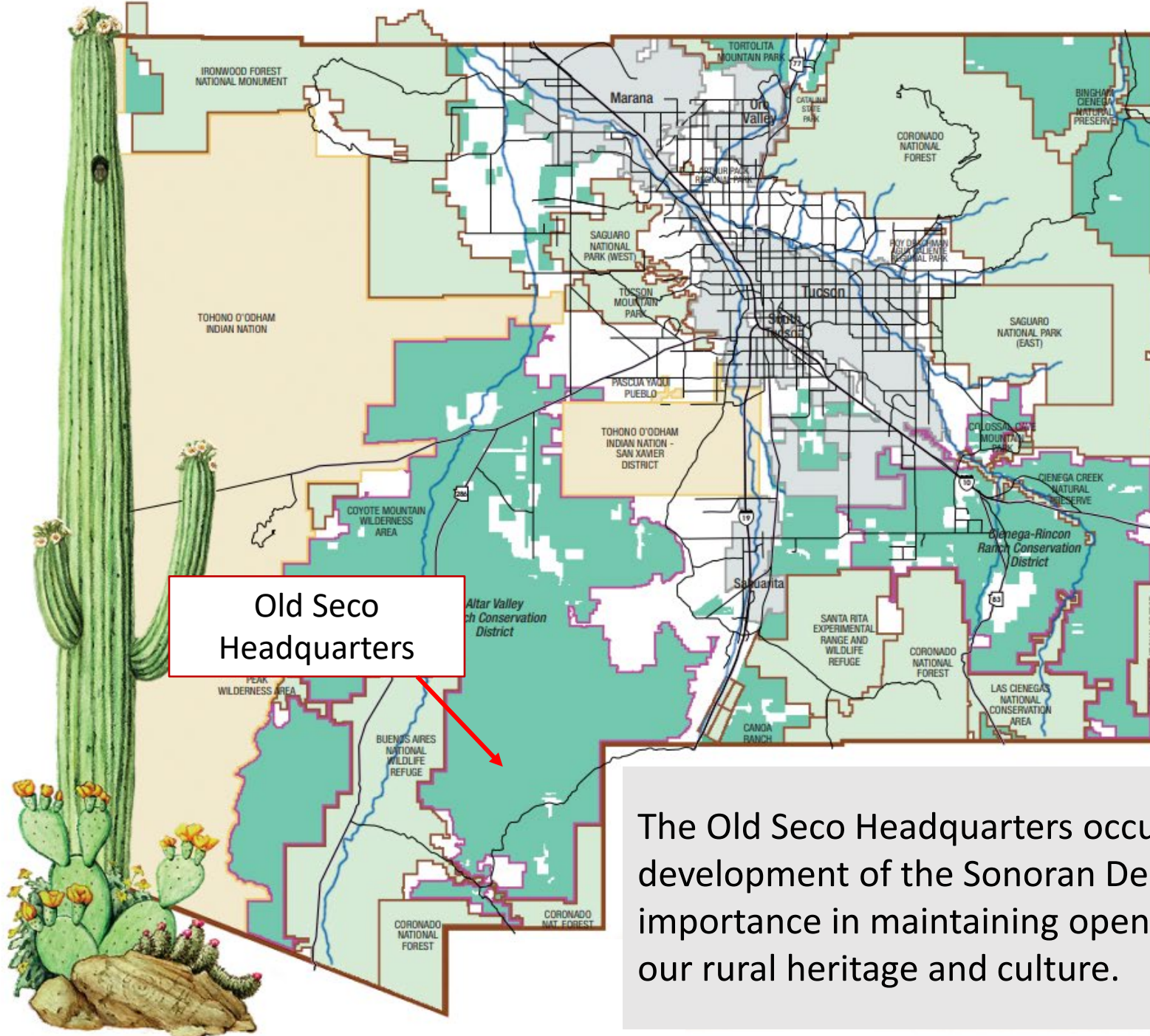
SONORAN DESERT CONSERVATION PLAN

RANCH CONSERVATION

Historically, ranching has probably been the single greatest determinant of a definable urban boundary in eastern Pima County. While over half of our 2.4 million acre region appears to be open, unused land, virtually all of this open space is used in ranching, an extensive but low-intensity land use. Through the conservation of working ranches that surround the Tucson metropolitan area, vast landscapes of open space are preserved, natural connectivity is maintained, and the rural heritage and culture of the Southwest are preserved.

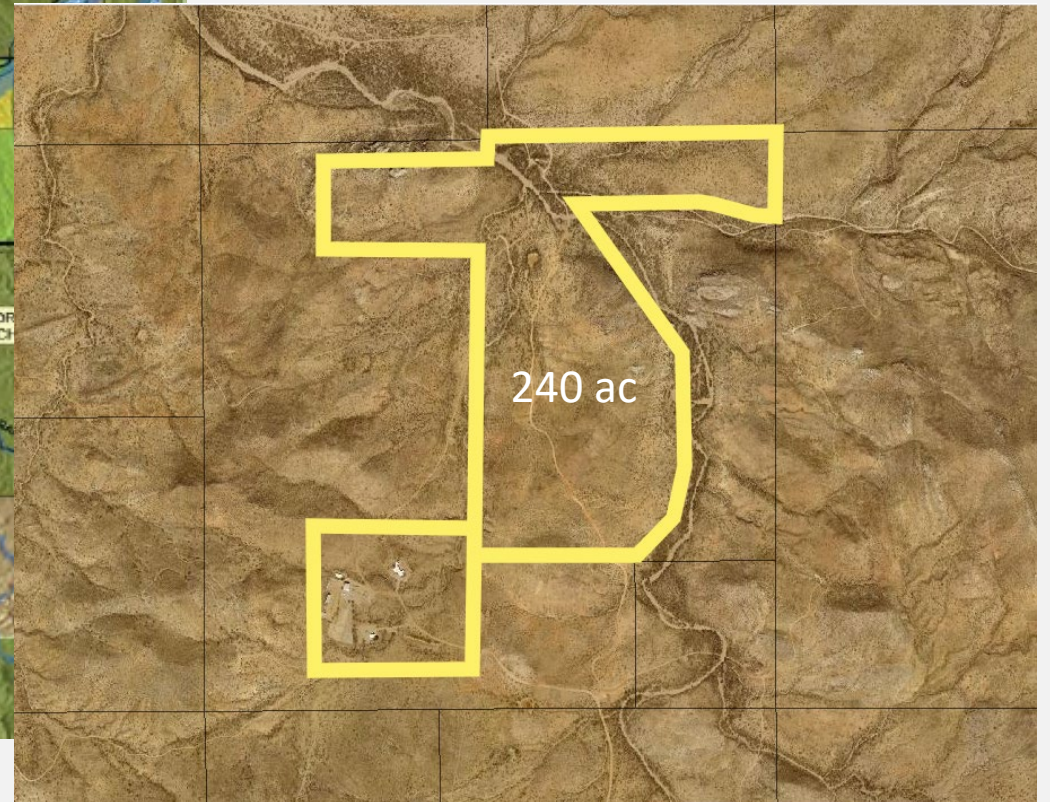
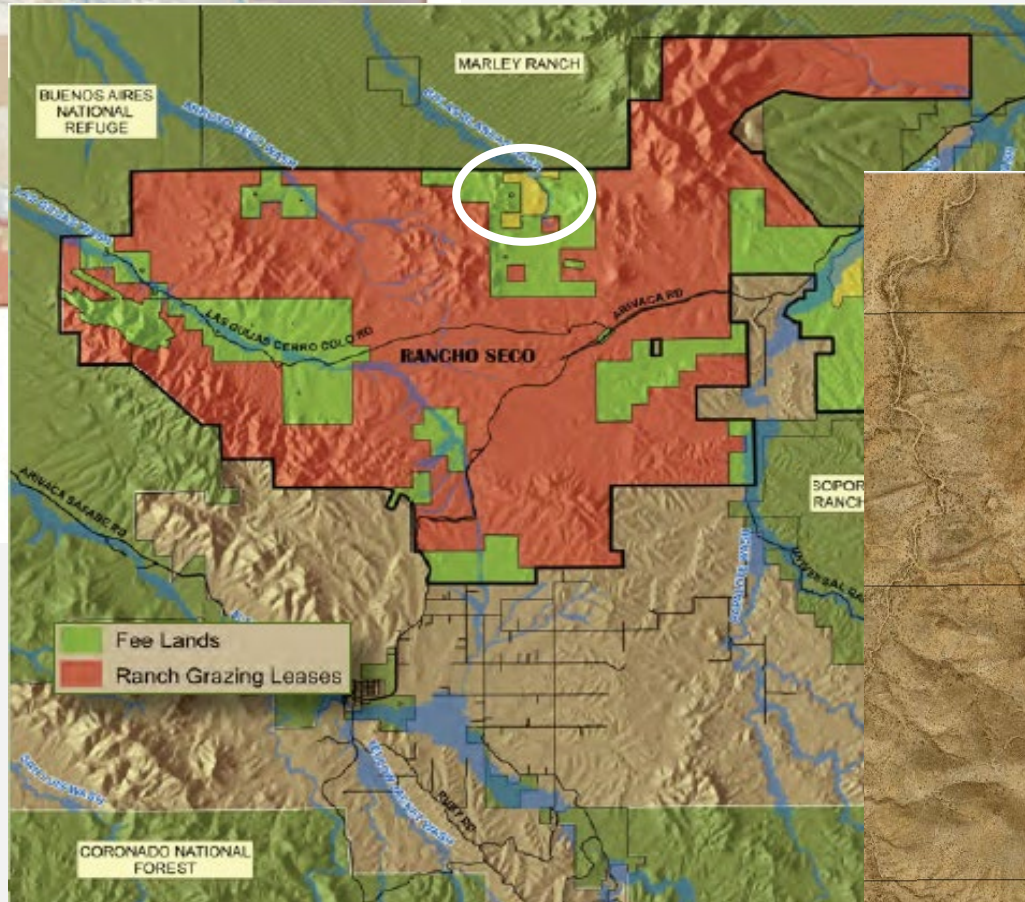
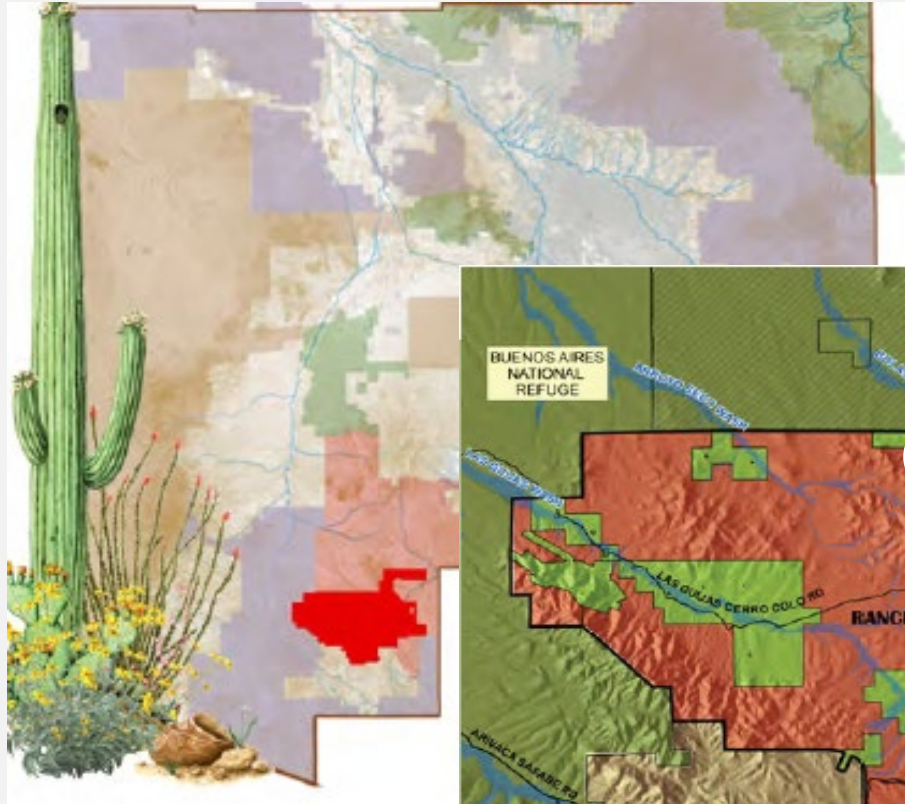
LEGEND

-  Ranch Lands
-  Existing Reserves
-  Incorporated Jurisdictions
-  Ranch Conservation District Boundary



The Old Seco Headquarters occurs in an area recognized during development of the Sonoran Desert Conservation Plan for its importance in maintaining open space landscapes and preserving our rural heritage and culture.

Acquisition of the Old Seco Headquarters
will consolidate County's ownership and management of
the Rancho Seco, most of which was purchased previously.





2013 aerial photo

Recent on-site photos



Species known to use or expected to use the Old Seco Headquarters property and surrounding lands.



Golden Eagle



Cactus ferruginous pygmy-owl



Mtn. Lion



Bobcat



Gila Monster



Badger



Mule deer



Antelope jackrabbit



Javelina