

Pima County Climate and Sustainability Update

Pima County Board of Supervisors Presentation
October 15, 2024

Expansion of County's Climate Action Efforts in 2024

Fall 2023 – Establishment of the
Climate Action Executive Team

Expansion of the Climate Team of
Directors to include a **Climate Action
Advisory Committee**

Establishment of new **Climate and
Sustainability Priorities**

Development and deployment of critical
Response Plans in **four Climate
Priority Areas**

Completion of the County's **SAPCO**
Alignment of the County's priorities with
Regional Partners



SAPCO Update

Final Report Findings from the County's Sustainable Action Plan
for County Operations





SAPCO Success Stories

Green Stormwater Infrastructure – **El Vado Wash Drainage Improvement Projects**
Enhancements of **Stormwater Parks** and enhanced neighborhood water harvesting basins

Enhancement of **EV Charging Stations** across County Facilities and Regional Partnerships

RWRD reduced energy usage – surpassing its goal a year ahead of schedule
Community Workforce Development bolstering **neighborhood green infrastructure projects**

Growth of Pima County's **Native Plant Nursery** – Greenhouse structure, water storage and solar

Reductions to **landfill volume and waste**
Growth of **sustainable workforce and education**



SAPCO Successes - Carbon

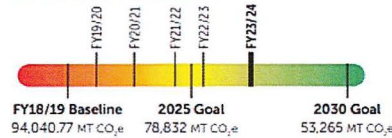
BUILDINGS, FACILITIES AND WASTEWATER TREATMENT

Target 1

Reduce carbon emissions from county facilities and wastewater treatment by 50%

Pima County has installed solar panels on several County properties that have offset power generated by TEP. These numbers represent the total amount of energy produced by Pima County- site specific solar installations (solar offsets). County Facilities (including Wastewater)

Total Emissions (MT CO₂e) (includes wastewater, facilities and fleet emissions) FY22/23:76,407 • FY23/24:69,122



COUNTY VEHICLE FLEET

Target 2

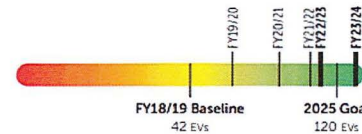
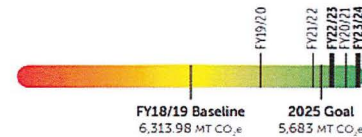
Reduce carbon emissions from county fleet by 10% in non-electric vehicles

FY22/23: 5,614 • FY23/24: 5,447 (Metric Tons CO₂e)

Target 3

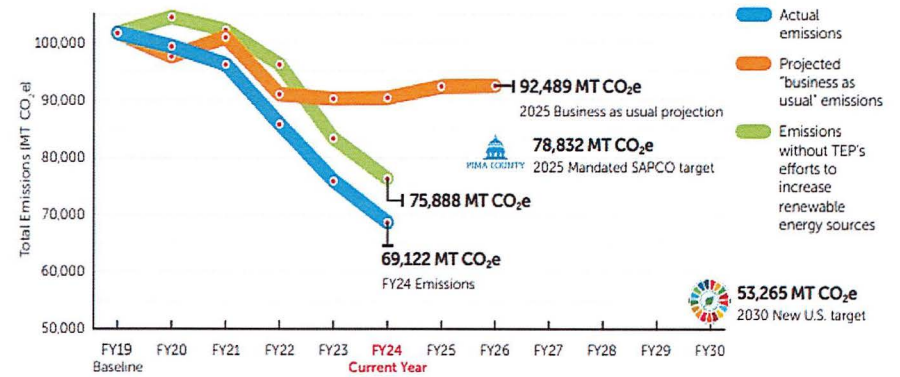
Replace up to 120 gas sedan vehicles with fully electric vehicles (EVs)

FY22/23: 114 • FY23/24: 138 (cumulative # EVs)



Emissions Reduced from Solar Offset (MT CO₂e): FY22/23: 6,763 • FY23/24: 6,766

PIMA COUNTY OPERATIONS EMISSIONS⁴



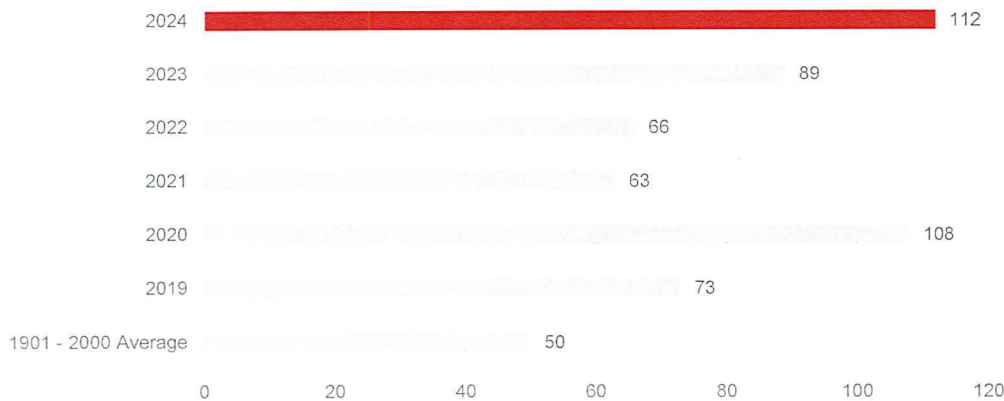
⁴ This graph illustrates total emissions from carbon sources. The graphic represents actual emissions with and without renewable energy from the utility. This graphic represents actual measurements through the proposed reporting period.

Pima County has not only met, but exceeded its goals in Carbon Reduction, and is well positioned to meet its 2030 emissions reductions goal.



Climate Outlook Update

Count of Days at or over 100°F April - October



	1901 - 2000 Average	2019	2020	2021	2022	2023	2024	Average Increase
April - October	50	73	108	63	66	89	112	85
Unique Year % different than 1901 - 2000 Ave		46%	116%	26%	32%	78%	124%	75%
Count of Days different than 1901 - 2000 Ave		23	58	13	16	39	62	35
Unique Year % different than Year Prior			48%	-42%	5%	35%	26%	14%
Unique Year Count of Days different than Year Prior			35	-45	3	23	23	8

Over the SAPCO period (2018 – 2025), overall average temperatures have continued to increase, with **2024 being Pima County’s hottest year on record - breaking previous summer temperatures**

Annually, the region is seeing average annual increases of 8 more days of 100+ degree days, and over the SAPCO period compared to the 1901- 2000 average – 35 days, the equivalent of an extra month.

That is consistent with the expansion of summer measurement to include **April and October**





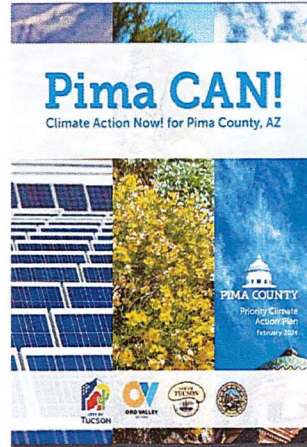
Climate Action Teams Update

Mitigation Efforts into **Adaptation** and **Resiliency**



Comprehensive Climate Priorities

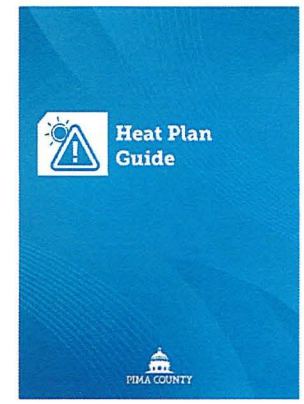
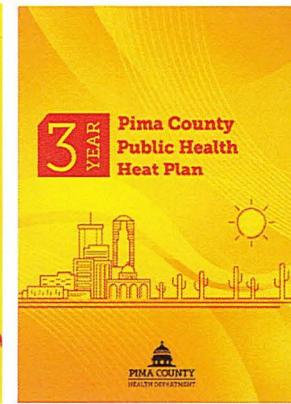
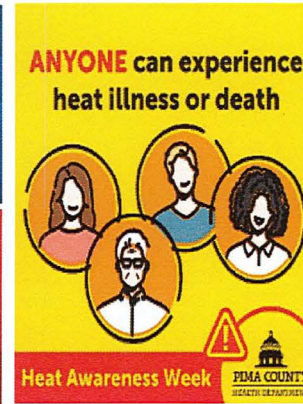
Mitigation, Adaptation, and Resilience



Pima County Priority Climate Action Plan (PCAP)

Regional Partnership representative of over 25 distinct projects with an estimated reduction of 1.5 million tons of carbon emissions between 2025 and 2030.

Pima County Regional Heat Response Efforts



Heat Awareness Campaigns, Regional Cooling Center Coordination, Comprehensive Heat Planning and Worker Protection Policies for Heat Safety



Comprehensive Climate Priorities

Mitigation, Adaptation, and Resilience



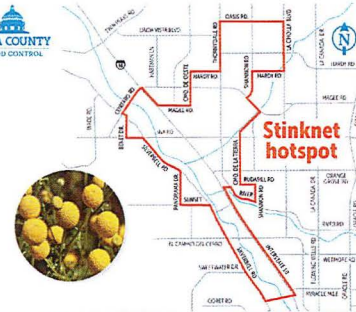
STINKNET PUBLIC HEALTH AND FIRE RISKS



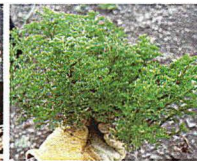
Stinknet is a **new invasive plant** to the Sonoran Desert. It grows up to two feet tall in the cool season, has a pungent smell, and can cause headaches and allergic reaction. Upon flowering it produces thousands of seeds, spreading infestations. When it dries up it's highly flammable

Pima County and partners received a 3-year grant from the US Forest Service and the Arizona Department of Forestry and Fire Management to help your community control fire prone plants like stinknet and buffelgrass.

Contact us at firewise@pima.gov if you have interest in collaboration opportunities or questions. Please report stinknet observations www.stinknet.org



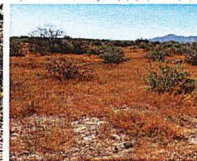
Stinknet seedling, Dec.-Feb.



Carrot-like leaf cluster Feb. - April



Flowering Stinknet plant, March-May



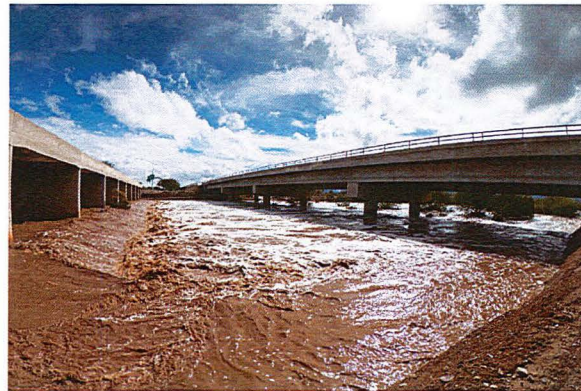
Dried Stinknet patch, May - Dec.

For federal funding disclosure information visit pima.gov/fundinginfo

Addressing Invasive Species and Wildfire Risk

Comprehensive planning in support of mitigating the ongoing risk of invasive species

Reactivating the Water Working Group Priorities



Comprehensive Planning to Address:

- Scarcity and Degradation
 - Innovative & alternate approaches to water use and collection
- Reduce Demand and Use
 - Policy Opportunities



CLIMATE ACTION PLANNING 2025 - 2030

- Climate Action Plan for County Operations (CAPCO)
 - Comprehensive Climate Action Plan (CCAP)
- Integration of all 2024 planning efforts into CAPCO (mitigation, adaptation and resilience)
- Malleable and Scalable Project Development (data driven, operational capacity, and evaluative design)
- Alignment with public health impact, workforce development, and disproportionately affected communities
- Collaborative Innovation – supporting regional partnership networks, economic vitality and increased community impact



PIMA COUNTY

Thank you!



PIMA COUNTY

Board of Supervisors

Adelita S. Grijalva, *Chair*, District 5

Rex Scott, *Vice Chair*, District 1

Dr. Matt Heinz, District 2

Dr. Sylvia M. Lee, District 3

Steve Christy, District 4

Pima County Administrator

Jan Leshner