

©111047E-002 Cat Mt. Vista01 Planning04 Rezone or GPASite Analysis\ExhibitII-C-3 Disturbed, Revegetated Areas_2.26.18.dwg Plotted: Mar. 15, 2018

**Exhibit II-C-3
Site Disturbance**



Pre-Development Flows (Upstream)	Q ₁₀₀
1	246 cfs
2	66 cfs
3	60 cfs
4	47 cfs
5	48 cfs
6.1	48 cfs
6.2	66 cfs
6.3	11 cfs
6.4	143 cfs

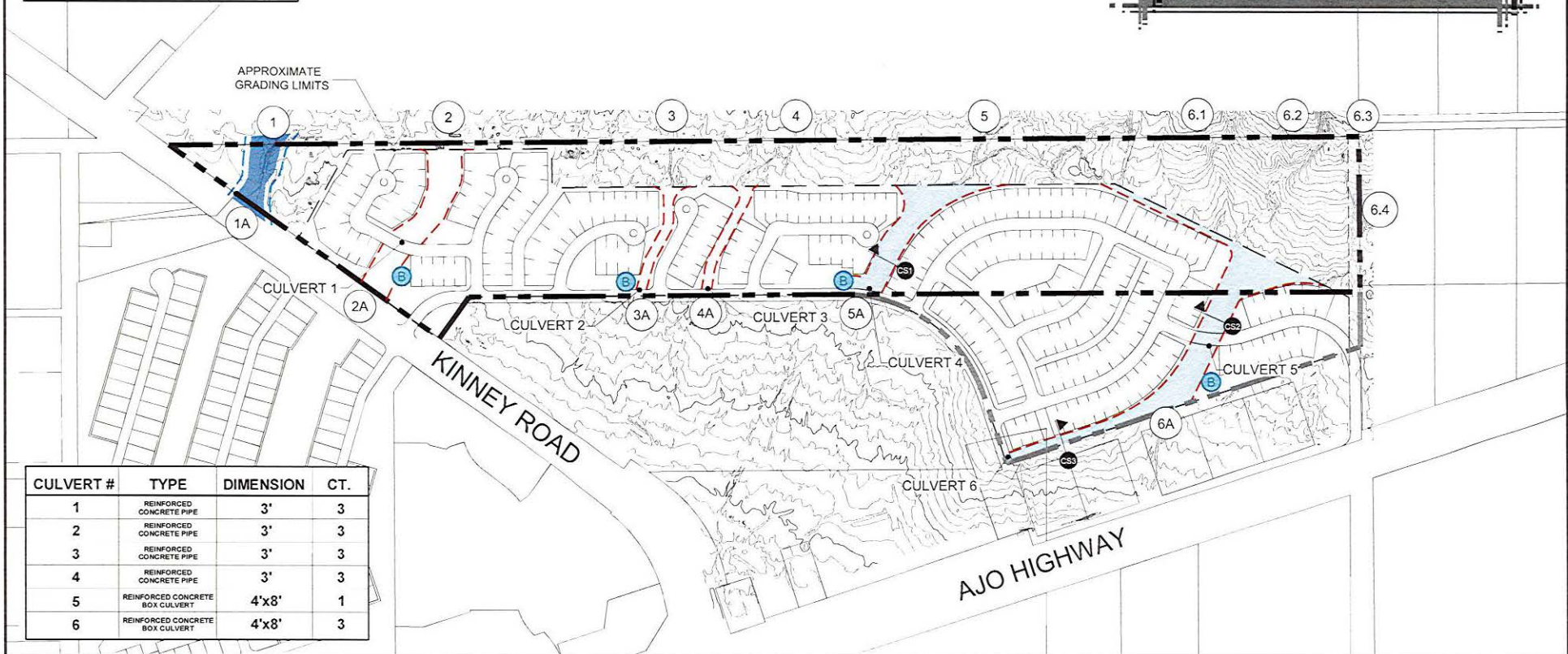
Post-Development Concentration Points	Q ₁₀₀
1A	261
2A	85
3A	76
4A	94
5A	120
6A	390

NOTE: Basins will be sized to reduce predevelopment flows by 10%

Channel Cross Section	Depth	Channel Bottom Width	Channel Top Width	Side Slope
CS1	1.25'	25'	32.5'	3:1
CS2	1.75'	40'	50.5'	3:1
CS3	2.25'	30'	43.5'	3:1

LEGEND

- Project Boundary
- Rezoning Boundary
- Approx. Proposed 100-Year Floodplain with Erosion Protection
- Approximate 100-Year Local Floodplain
- Schematic Basin Location
- Erosion Protection
- Erosion Hazard Setback



CULVERT #	TYPE	DIMENSION	CT.
1	REINFORCED CONCRETE PIPE	3'	3
2	REINFORCED CONCRETE PIPE	3'	3
3	REINFORCED CONCRETE PIPE	3'	3
4	REINFORCED CONCRETE PIPE	3'	3
5	REINFORCED CONCRETE BOX CULVERT	4'x8'	1
6	REINFORCED CONCRETE BOX CULVERT	4'x8'	3

Exhibit II-D-1
Post Development On-Site Hydrology





G:\111047-E-002\Cat Mt. Vista\01 Planning\04 Rezoning or GPAL\Site Analysis\ExhibitII-E Impact to Biological Resources.dwg Plotted: Mar. 15, 2018

**Exhibit II-E
Impact to Biological Resources**



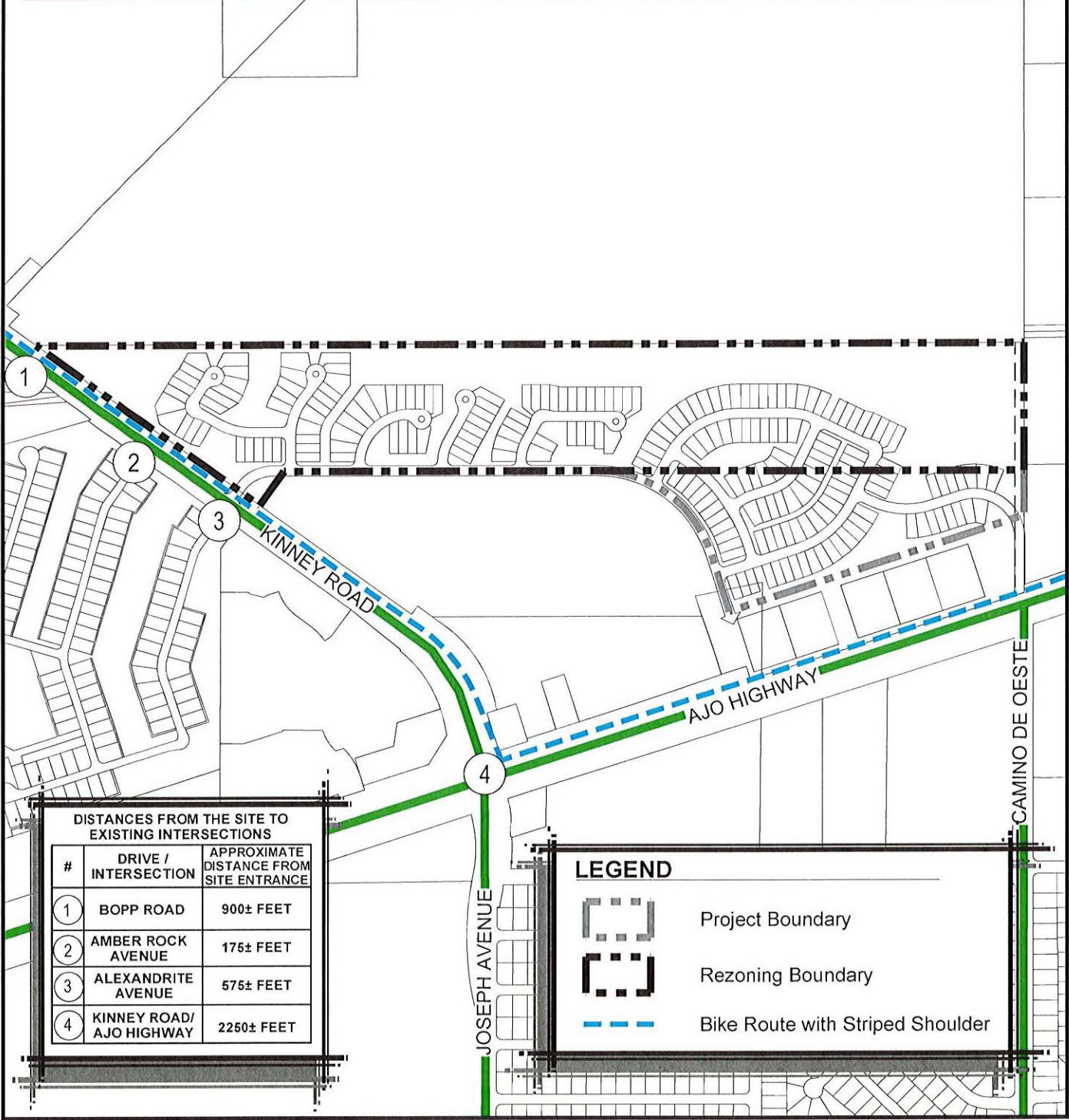


© 111047-E-002 Cat Mt. Vista 01 Planning 04 Rezoning or GP/SA Site Analysis Exhibit II-F-1 Proposed Bufferyards.dwg Plotted Mar. 15, 2018

**Exhibit II-F-1
Proposed Bufferyard**



MAJOR ROUTE	EXISTING R.O.W.	MEET COUNTY STANDARDS	CONTINUOUS R.O.W.	TRAVEL LANES	POSTED SPEED	PRESENT ADT	CAPACITY ADT	BICYCLE LANE / SIDEWALK	IMPROVEMENTS TO BE COMPLETED
KINNEY ROAD	150'	YES	YES	2	45 MPH	14,464	16,000	YES / NO	NONE SCHEDULED
AJO HIGHWAY	200'	YES	YES	4	55 MPH	31,397	39,800	YES / NO	NONE SCHEDULED
IRVINGTON ROAD	45' - 100'	YES	YES	2	45 MPH	7,407	-	NO / NO	NONE SCHEDULED



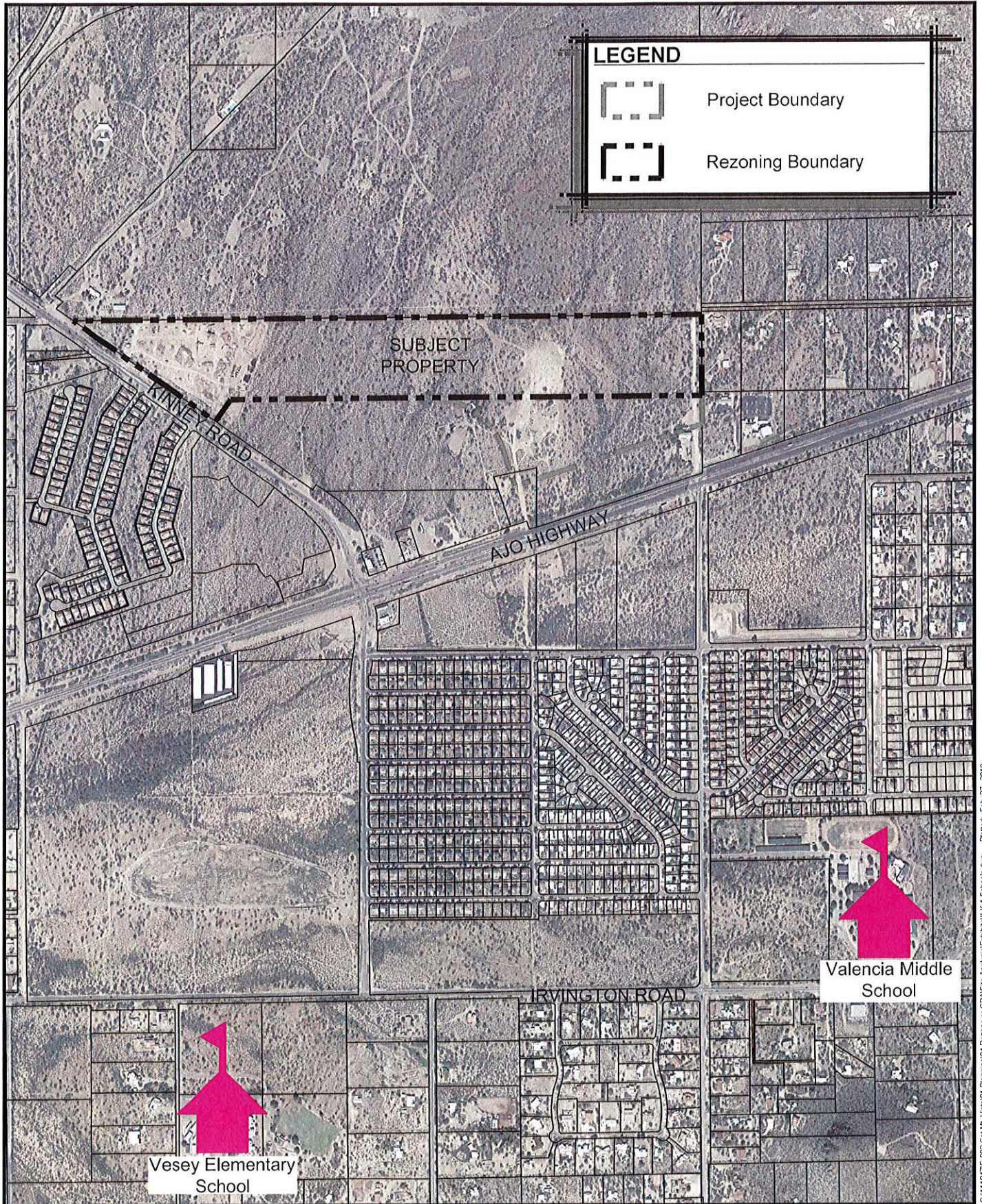
#	DRIVE / INTERSECTION	APPROXIMATE DISTANCE FROM SITE ENTRANCE
1	BOPP ROAD	900± FEET
2	AMBER ROCK AVENUE	175± FEET
3	ALEXANDRITE AVENUE	575± FEET
4	KINNEY ROAD/ AJO HIGHWAY	2250± FEET

LEGEND	
	Project Boundary
	Rezoning Boundary
	Bike Route with Striped Shoulder

**Exhibit II-G-1
Transportation**



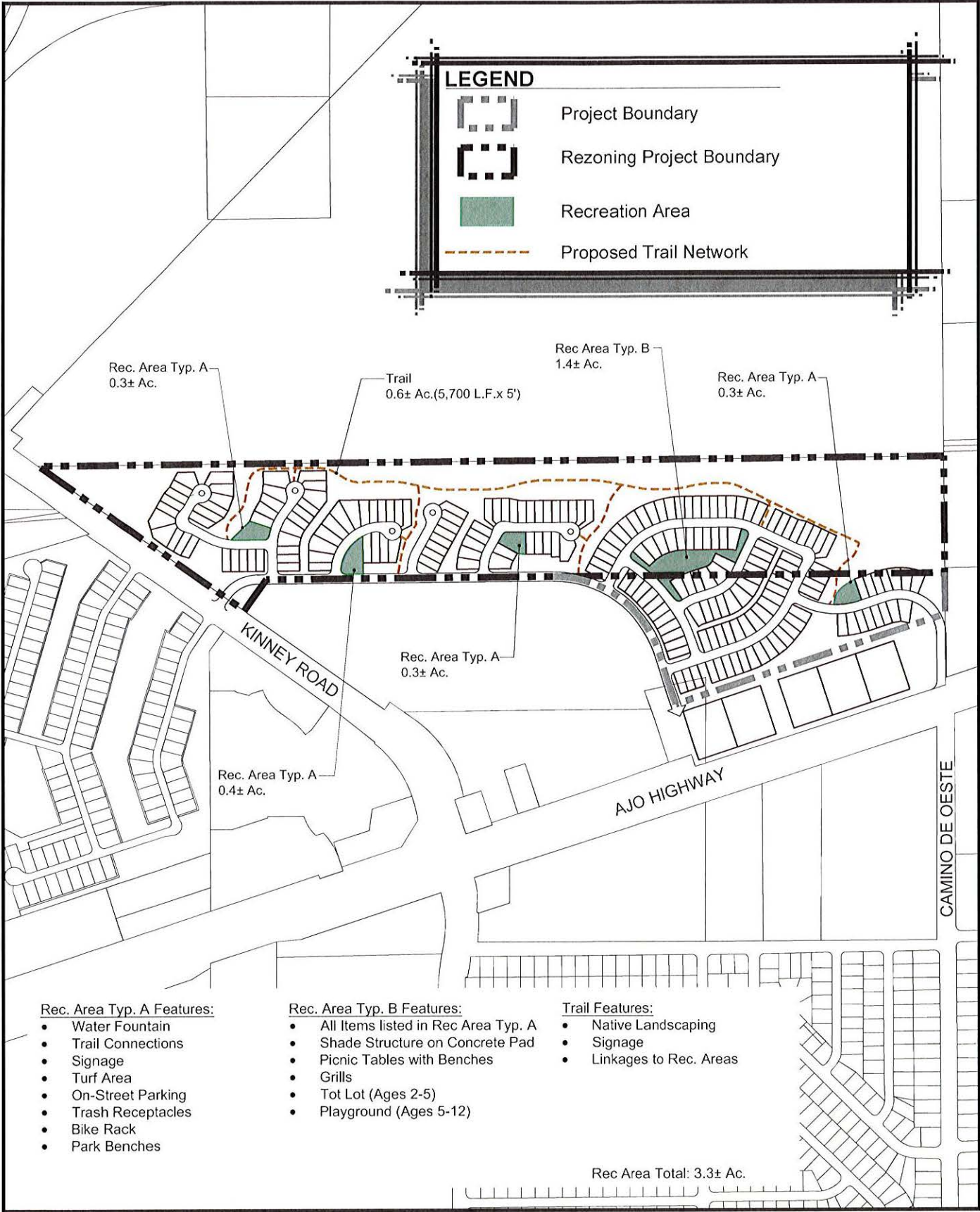
©111047E-002 Cat Mt. Vista01 Planning04 Rezoning or GPASite AnalysisEmbball-C-1 Transportation.dwg Plotted: Mar 15, 2018



0:111047-E-002 Cat Mt. Vista01 Planning04 Rezoning or GPASite Analysis/E/Inhabitants/K-1 Schools.dwg Plotted Feb. 27, 2018

**Exhibit II-K-1
Access to Schools**





Q:\111047-E-002 Cat Mt. Vista\01 Planning\04 Rezoning or GPAS\Site Analysis\Exhibit\II-L-1 Recreation.dwg Plotted: Mar 15, 2018

**Exhibit II-L-1
Recreation**

