



PIMA COUNTY

Strategic Planning

Update

3/18/25

Strategic Planning: Update

- Purpose of Strategic Planning
- Define Critical first steps
- Discuss Strategic Plan Elements
- Discuss Planning Timeline

Strategic Planning – What is the Purpose?

Strategic planning is the ongoing organizational process of using available knowledge to document an organization's intended direction.

This process is used to:

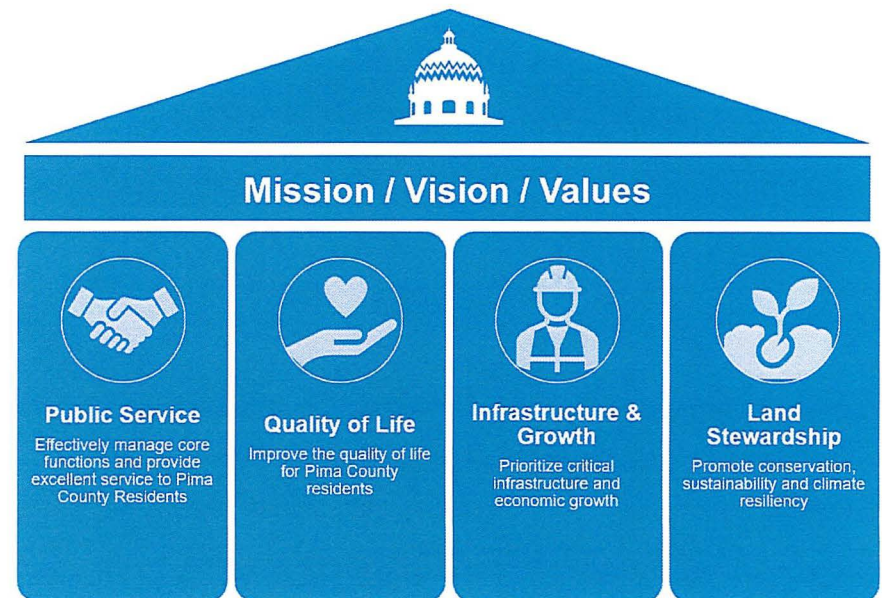
- prioritize efforts,
- effectively allocate resources,
- align leadership and employees on the organization's goals,
- ensure those goals are backed by data and sound reasoning.



Strategic Planning – First Steps

FY 2025/26 Strategic Planning

- Focus on Mission / Vision / Value input from Department Leadership
- Review existing adopted plans and guidance
- Generate first draft to align with Budget Process Pillars, Goals & Tactics
- Provide draft strategic framework for BOS consideration by end of fiscal year

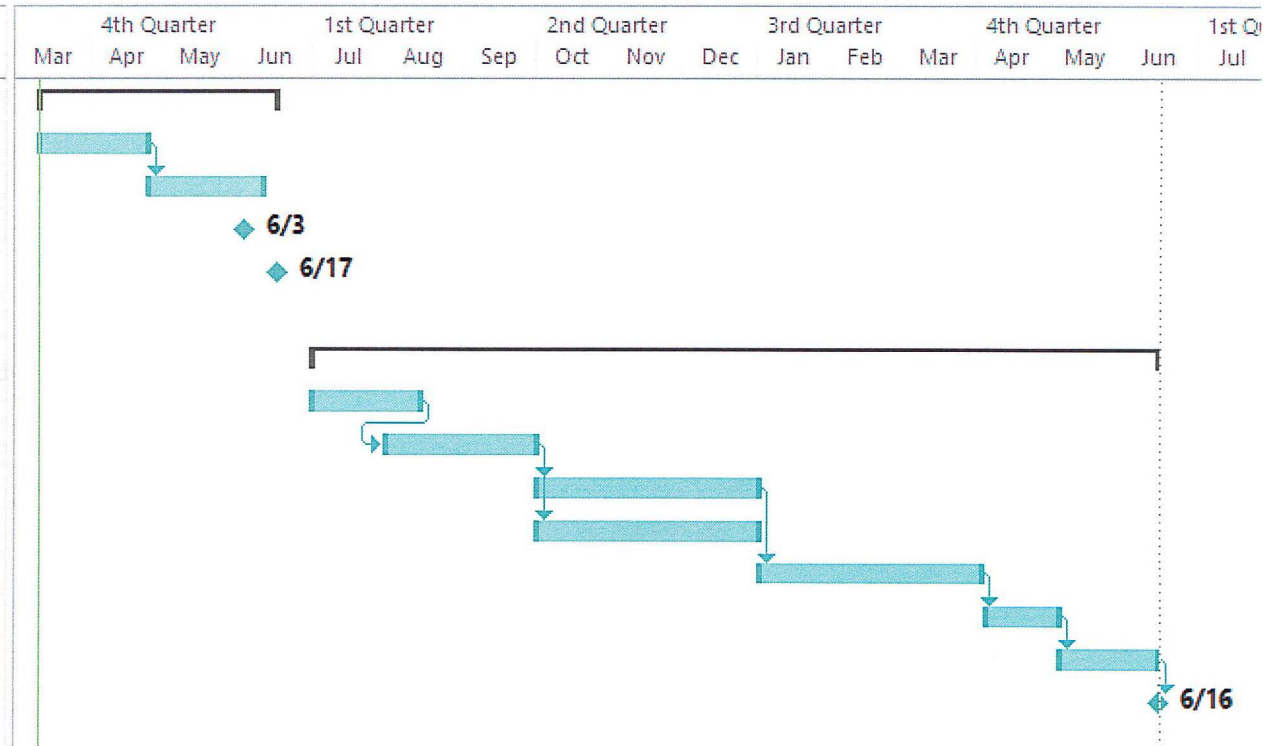


Elements of Draft Strategic Framework

- Mission and Vision and Values
- Pillars (Focus Areas)
- Action Plan (organized by Pillars)
 - Goals
 - Action/Tactic/Objective

Strategic Planning – Timeline

Task Name	Start	Finish
FY 2025/26 Strategic Plan	Tue 3/11/25	Tue 6/17/25
M/V/V Input: Directors	Tue 3/11/25	Thu 4/24/25
Draft Strategic Framework	Fri 4/25/25	Tue 6/10/25
Present to BOS for discussion	Tue 6/3/25	Tue 6/3/25
BOS Acceptance	Tue 6/17/25	Tue 6/17/25
FY 2026/27 Strategic Plan Update	Tue 7/1/25	Tue 6/16/26
Input: Pima Staff	Tue 7/1/25	Thu 8/14/25
Action Plan Input: Directors	Fri 8/1/25	Wed 10/1/25
Align Action Plan w Budget	Thu 10/2/25	Thu 1/1/26
Input: Community	Thu 10/2/25	Thu 1/1/26
Draft Strategic Plan Update	Fri 1/2/26	Fri 4/3/26
Internal Comment Period	Mon 4/6/26	Tue 5/5/26
Strategic Plan Update (final)	Wed 5/6/26	Mon 6/15/26
BOS Acceptance	Tue 6/16/26	Tue 6/16/26





PIMA COUNTY

Board of Supervisors

Rex Scott, *Chair*, District 1

Adelita S. Grijalva, *Vice Chair*, District 5

Dr. Matt Heinz, District 2

Jennifer Allen, District 3

Steve Christy, District 4

Pima County Administrator

Jan Lesher