

IT'S ALL ABOUT MARKETING

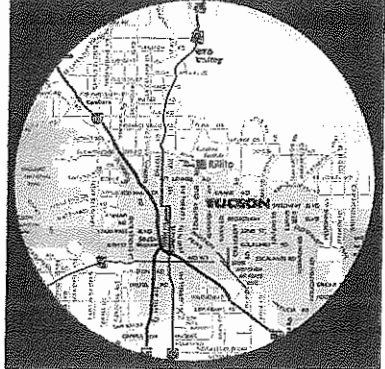
rillitoracing.com



rillitoracing.com



RILLITO PARK LOCAL MARKET



RILLITO PARK REGIONAL MARKET



Rillito Park Local and Regional Marketing Areas

Website Blog E-Blasts Facebook Twitter
Network Cable Radio Newspaper Magazine
Promotions Spanish Language Media Charity Events
Racing Programs Off-Track Betting Hotel Brochures

Year-Round and Event Coordinated Media Presence

overview plan showing second level layout



RACING & RUNNING



LIVE THOROUGHBRED & QUARTER HORSE RACING SPRING AND FALL MEETS

Quality Live Racing returns to Rillito with a 28 day Spring Meet running January through the first of April. Thoroughbreds and Quarter Horses gather at Rillito for weekend racing, highlighted by the Borderlands Racing Festival in late March. A shorter 12 day Meet starts in October leading up to a three day Festival of the Southwest over Thanksgiving weekend.

Off-Track Betting is back with large-screen viewing in the Clubhouse OTB Cantina and the Grandstand Back-Bar, located on the Mezzanine. The OTB Cantina is open days and evenings Wednesdays through Sunday for OTB wagering.



BORDERLANDS RACING FESTIVAL

During our Spring Meet, Rillito hosts the Borderlands Racing Festival, one of the largest gatherings of racing Quarter Horses in the world. This three-day event ends the Meet with some of the fastest horses, richest purses, and largest international crowds in the West.

The highlight of the Festival is the El Moro de Cumpas Stakes, where the fastest Quarter Horses from north and south of the border meet for a winner-take-all purse. The race honors the famous match race from the fifties held in Agua Prieta, Sonora. It was a race that created a legend in Mexican racing folklore, starting a series of border races. Once, when US and Mexican Customs would not allow the horses to cross, the US entry ran on the north side of the border and the Mexican on the south!

THE UNIVERSITY OF ARIZONA Race Track Industry Program

WHO'S THE BOSS?

Each Live Racing Season, we turn the reins over to the staff and students of the University of Arizona's Race Track Industry Program for an entire day's racing. From Track Secretary, to Marketing, to Steward positions, the students gain experience and get to see Who's the Boss?

In addition, the Infield is opened up for a huge U. of A. party hosted by student-run clubs and service groups. Each gets matched with a post position in one race on the card - and a piece of the action if their horse hits the Board!



RPSOCCER



LEAGUE

RILLITO PARK FIELD SPORT LEAGUES

Whether your game is soccer, rugby, lacrosse, field hockey, or frisbee, we host leagues from many of the field sport clubs represented in the County, throughout the year.

Our summer leagues run in the cool of the mornings and the evenings, with a following series of league play and tournaments in the fall.

Our four Infield regulation soccer fields are kept in first-class condition to host tournament and league games, while our practice fields are open year round for club practice or a public pick-up game. During the season, our Infield snack bar is open, serving food and cold beverages. Join us in Rillito Park, the center of Field Sport Fun!



Each Fall, Rillito Park, along with other sponsors, hosts The Rillito Cup, a county wide soccer tournament culminating in the Semi-finals and Finals held in the Infield at Rillito.

The Racetrack facility hosts gathering players and spectators in the Clubhouse and Grandstand, with full food and beverage services. Plus, the action on the field is televised over our race monitor system and broadcast by announcers. The participating clubs vie for a piece of the \$10,000 Purse, awards, and prizes!

RACING & RUNNING



LIVE THOROUGHBRED & QUARTER HORSE RACING SPRING AND FALL MEETS

Quality Live Racing returns to Rillito with a 28 day Spring Meet running January through the first of April. Thoroughbreds and Quarter Horses gather at Rillito for weekend racing, highlighted by the Borderlands Racing Festival in late March. A shorter 12 day Meet starts in October leading up to a three day Festival of the Southwest over Thanksgiving weekend.

Off-Track Betting is back with large-screen viewing in the Clubhouse OTB Cantina and the Grandstand Back-Bar, located on the Mezzanine. The OTB Cantina is open days and evenings Wednesdays through Sunday for OTB wagering.



BORDERLANDS RACING FESTIVAL

During our Spring Meet, Rillito hosts the Borderlands Racing Festival, one of the largest gatherings of racing Quarter Horses in the world. This three-day event ends the Meet with some of the fastest horses, richest purses, and largest international crowds in the West.

The highlight of the Festival is the El Moro de Cumpas Stakes, where the fastest Quarter Horses from north and south of the border meet for a winner-take-all purse. The race honors the famous match race from the fifties held in Agua Prieta, Sonora. It was a race that created a legend in Mexican racing folklore, starting a series of border races. Once, when US and Mexican Customs would not allow the horses to cross, the US entry ran on the north side of the border and the Mexican on the south!



THE UNIVERSITY OF ARIZONA

Race Track Industry Program

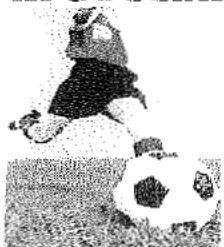
WHO'S THE BOSS?

Each Live Racing Season, we turn the reins over to the staff and students of the University of Arizona's Race Track Industry Program for an entire day's racing. From Track Secretary, to Marketing, to Steward positions, the students gain experience and get to see Who's the Boss?



In addition, the Infield is opened up for a huge U. of A. party hosted by student-run clubs and service groups. Each gets matched with a post position in one race on the card - and a piece of the action if their horse hits the Board!

RPSOCCER



LEAGUE

RILLITO PARK FIELD SPORT LEAGUES

Whether your game is soccer, rugby, lacrosse, field hockey, or frisbee, we host leagues from many of the field sport clubs represented in the County, throughout the year.

Our summer leagues run in the cool of the mornings and the evenings, with a following series of league play and tournaments in the fall.

Our four Infield regulation soccer fields are kept in first-class condition to host tournament and league games, while our practice fields are open year round for club practice or a public pick-up game. During the season, our Infield snack bar is open, serving food and cold beverages. Join us in Rillito Park, the center of Field Sport Fun!



THE RILLITO CUP

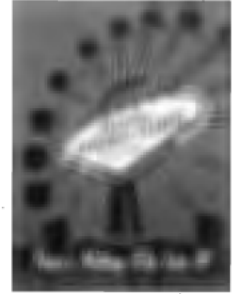
Each Fall, Rillito Park, along with other sponsors, hosts The Rillito Cup, a county wide soccer tournament culminating in the Semi-finals and Finals held in the Infield at Rillito.

The Racetrack facility hosts gathering players and spectators in the Clubhouse and Grandstand, with full food and beverage services. Plus, the action on the field is televised over our race monitor system and broadcast by announcers. The participating clubs vie for a piece of the \$10,000 Purse, awards, and prizes!

EVENTS & CONCERTS



There's nothing else like it! Associated Students of the University of Arizona's (ASUA) Spring Fling is back again! Starting back in 1974, Spring Fling has become an iconic figure by providing carnival rides, games, food booths, and entertainment to both the University of Arizona and Tucson communities.



Spring Fling is the largest student-run carnival in the nation attracting over 25,000 people last year. Spring Fling provides over 25 rides and games to attendees, over 20 different food booths with a wide variety ranging from corn dogs to crab puffs.

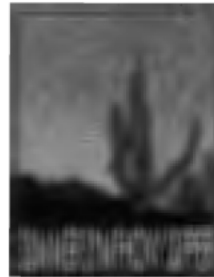


TUCSON LEGENDS MUSIC FESTIVAL

Every Spring as part of our Borderlands Racing Festival, we host a two-evening concert featuring some of Tucson's legendary musicians with some new and upcoming acts. Staged in the infield, the concert is open to everyone and all are invited to bring their chairs or

blankets to relax and take in the sights and sounds of Calexico, Los Lobos, and many more. Whether your taste in music runs from rock to jazz to cumbia, you're sure to find music you enjoy. Plus, some of Tucson's best local sidewalk vendors, restaurants, and cantinas will be serving up Eats and Drinks! It's Tucson!

SUMMER SYMPHONY SUPPER



On a hot summer night there is nothing more refreshing than dining on cool grass enjoying classical music, good food, and great wines. Join us for our Summer Symphony Supper, catered by some of Tucson's best chefs and restaurants with wine tastings from wineries from around the world.

We kick off the evening with many of your favorite selections, followed by a guest conductor, then end the evening with an incredible fireworks display! Help support the arts in Tucson as proceeds support the Symphony.

días de los muertos fall music festival



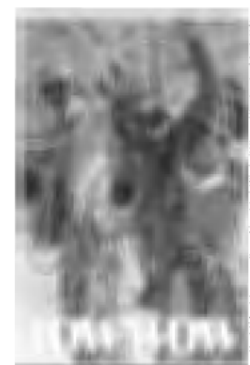
Bring out your best costume for a night of music and merriment. The stage will host some of the best in Southwest and Mexican music from some of the top acts in the nation. But, it's way more than music. Enjoy fortune tellers, fireeaters, theater troops, and wander through the market where you'll find authentic Mexican arts and crafts.

Delicious Mexican foods will be offered from some of Tucson's favorite eateries and watering holes. Plus, prizes and contests. Join in on the merriment in celebration of all our ancestors and a heritage that binds us still.

TUCSON POWWOW

NEW YEAR'S CELEBRATION

The New Year's POWWOW is a Tucson tradition. Over 50 native American tribes are represented in one of the largest and most colorful dance competitions in all of the nation.



The three-day celebration brings together dance groups, musicians, poetic and literary artists, pow-wow folks, war mothers and veteran's societies, seventh generation youth and golden age groups, tribal tourism, art and craft vendors and tribal commercial exhibits. The highlight is a midnight dance to ring in the New Year.

EATS & DRINKS

OTB CANTINA

You don't have to wait until the weekend to have a chance to play the ponies! Off-Track Betting is back at Rillito with simulcast racing Wednesday through Sunday during each season's Meet. Our large monitors and multi-display screens offer the best viewing of races from major tracks all across the country. And on Live Race Days, there is no better place to watch and wager.

The OTB Cantina also features some of the best Mexican and American food in town, with a full menu and bar. Plus, we host the best Happy Hour in all of Arizona with daily drink and food specials.

SEÑOR SUERTE

Want to feel like Mister Lucky? Grab a bite from our purely Mexican fair eatery. Señor Suerte serves the best homemade style tamales, enchiladas, tacos, and the best Sonoran style shrimp cocktail this side of Puerto Penasco!

We slow roast our chickens, pork, and beef so they are tender and moist. We use the freshest tortillas in your choice of flour or corn. The food is authentic and flavorful, dressed from our fully stocked salsa bar. We serve agua frescos and a wide selection of some of your favorite Mexican beers. Plus, you can't beat our hot and spicy Michelada!

RP SADDLE CLUB

Join the Rillito Park Saddle Club by reserving your Table or Box for the current season's meet. You'll not only have your seats waiting, your membership gets you Preferred Parking, and discounts on special events and activities.

We'll even E-mail all entries and past performances to you as soon as they are available, giving you a head start! Our Clubhouse Seating offers dining and cocktails with a full menu, while our Box seats get you right on the Finish Line!

A membership for both the Fall and Spring Meets gets you even more with special invitations for exciting events

RP Paddock OVERLOOK

The insider's choice for proper pre-race handicapping, the Paddock OVERLOOK is the place to be between races. Located right in the Clubhouse at the glass windows overlooking the Paddock, you'll get a great view of the horses saddling up, and the jockeys putting their race faces on.

You'll also get great service with a full selection of beers, both foreign and domestic, including some choice selections from local and regional micro-breweries. The Paddock OVERLOOK also offers a fresh selection of deli sandwiches, made with quality meats, breads and cheeses. Join us!

OFF-TRACK BETTING GRANDSTAND BACK-BAR

Now that Off-Track Betting is back at Rillito Park, we set up a special viewing area on the west end of the Mezzanine. It's the perfect place to get away from the crowd, sit down for a cold one and wager on races from some of the top tracks in the country.

Every morning before the first post time, we offer tips on the days races from a member of the track secretary's staff. Plus we host 'New to Racing?' mini-seminars each morning so that you can learn the fundamental skills of wagering and tricks of the trade from some of the best handicappers in the Southwest!

EATS & DRINKS

OTB CANTINA

You don't have to wait until the weekend to have a chance to play the ponies! Off-Track Betting is back at Rillito with simulcast racing Wednesday through Sunday during each season's Meet. Our large monitors and multi-display screens offer the best viewing of races from major tracks all across the country. And on Live Race Days, there is no better place to watch and wager.

The OTB Cantina also features some of the best Mexican and American food in town, with a full menu and bar. Plus, we host the best Happy Hour in all of Arizona with daily drink and food specials.

SEÑOR SUERTE

Want to feel like Mister Lucky? Grab a bite from our purely Mexican fair eatery. Señor Suerte serves the best homemade style tamales, enchiladas, tacos, and the best Sonoran style shrimp cocktail this side of Puerto Penasco!

We slow roast our chickens, pork, and beef so they are tender and moist. We use the freshest tortillas in your choice of flour or corn. The food is authentic and flavorful, dressed from our fully stocked salsa bar. We serve agua frescos and a wide selection of some of your favorite Mexican beers. Plus, you can't beat our hot and spicy Michelada!

RP SADDLE CLUB

Join the Rillito Park Saddle Club by reserving your Table or Box for the current season's meet. You'll not only have your seats waiting, your membership gets you Preferred Parking, and discounts on special events and activities.

We'll even E-mail all entries and past performances to you as soon as they are available, giving you a head start! Our Clubhouse Seating offers dining and cocktails with a full menu, while our Box seats get you right on the Finish Line!

A membership for both the Fall and Spring Meets gets you even more with special invitations for exciting events

RP Paddock OVERLOOK

The insider's choice for proper pre-race handicapping, the Paddock OVERLOOK is the place to be between races. Located right in the Clubhouse at the glass windows overlooking the Paddock, you'll get a great view of the horses saddling up, and the jockeys putting their race faces on.

You'll also get great service with a full selection of beers, both foreign and domestic, including some choice selections from local and regional micro-breweries. The Paddock OVERLOOK also offers a fresh selection of deli sandwiches, made with quality meats, breads and cheeses. Join us!

OFF-TRACK BETTING GRANDSTAND BACK-BAR

Now that Off-Track Betting is back at Rillito Park, we set up a special viewing area on the west end of the Mezzanine. It's the perfect place to get away from the crowd, sit down for a cold one and wager on races from some of the top tracks in the country.

Every morning before the first post time, we offer tips on the days races from a member of the track secretary's staff. Plus we host 'New to Racing?' mini-seminars each morning so that you can learn the fundamental skills of wagering and tricks of the trade from some of the best handicappers in the Southwest!

EAST JOCKEY'S WHIP WEST FULL SERVICE BAR

There are two Jockey's Whip Full Service Bars located on the ground level in the Grandstands. Jockey's Whips East and West are under the stairwells leading up to the Grandstand bleachers.

Top shelf Tequila? We have it. Single Malt Scotch? We have it. Small Batch Bourbons? Ditto. Our Bartenders are professionals - we dare you to stump them. Try a Hard Twist. Named after the Champion Quarter Horse from the fifties, a Hard Twist is Rillito's trademark drink. Try one. It will make you feel like a Champion!

JELKS EAT SHOP

Hungry? Get yourself to Jelk's Eat Shop. Giant Burgers covered with Fries, Spicy Chicken Tender Baskets, the best Onion Rings in town, Egg and Homemade Chorizo Breakfast Burritos, Chicken Wings that will burn your mouth off, Nachos with all the jalapenos and cheese you can stand, Barbecue right out of the Mississippi Delta, a Bratwurst right out of Bavaria, Pizza right out of Brooklyn.

Oh, did we mention the Milkshakes?



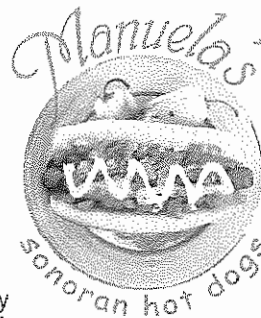
PADDOCK BREEZEWAY

The best thing about Rillito Park is that you can get up close to the action. For seeing your pick of the horses, there isn't a better spot than the PADDOCK BREEZEWAY.

Located under the Grandstand along the pass-through section leading the horses from the Paddock to the Track, the PADDOCK BREEZEWAY offers a great selection of beers on tap and in bottles from domestic and foreign breweries, and regional micro-brew selections. Plus, we serve quality deli sandwiches featuring the freshest meats, breads, and cheeses. Grab your spot to see the horses!

Manuela's

Nothing brings the cuisine of both sides of the border together more than the Sonoran Hot-Dog. This truly Mexican take on an American standard is a meal in itself.



An all beef wiener is wrapped in bacon and grilled for a smoky flavor. Placed on a fresh hotdog bun, beans, salsa, jalapenos, and sour cream top it off. We serve ours with a quarter of grilled onion, and two grilled peppers to put the hot in the hotdog! Located near the finish-line bleachers, MANUELA'S SONORAN HOT DOGS serves them up hot all day!

THE BUDWEISER BIG-TOP

There's a party going on in THE BUDWEISER BIG-TOP beer tent. Located on the west end of the Grandstand, the beer tent gets you right on the rail of the stretch run. Inside you'll not only find a full selection of Anheuser-Busch brews, but a wide assortment of beers represented by Golden Eagle Distributors of Arizona. Sierra Nevada Pale Ale is on tap along with Stella Artois, Beck's, Bass Ale, and premium selections from local breweries like Barrio.

For Eats, we have a wide variety of local food vendors, from TUCSON TAMALE COMPANY, serving surprising choices of these Southwest traditions, to NICK'S TRI-TIP SANDWICHES, slow roasted tri-tip piled high, to Kettle Korn to satisfy your sweet tooth! And we'll surprise you each weekend with a guest vendor representing something out of the ordinary. One weekend - sushi, the next bratwurst, the next Jamaican jerk chicken. Who knows?

Just outside, there are treats for kids like pony rides and inflatable jumping castles. THE BUDWEISER BIG-TOP is the place to be on race day for fun and action!

HOW TO MAKE A HARD TWIST



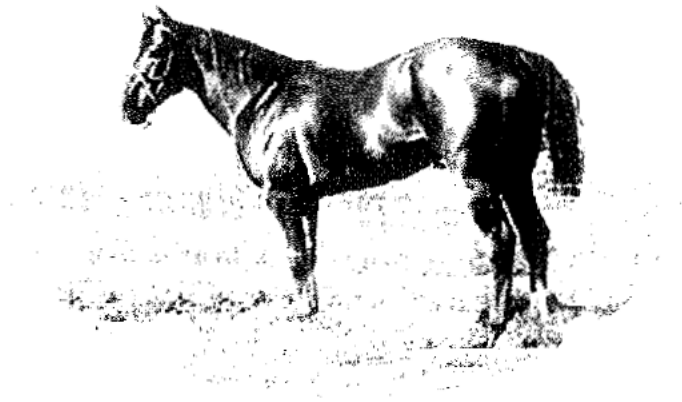
HARD TWIST 1942 - 1962

Named after the famous Rillito Champion from the early era, the Hard Twist is Rillito Park's trademark libation. Have one. It'll make you feel like a Champion.

A Hard Twist:

- a. fill a highball glass, rimmed with salt and sugar, with crushed ice.
- b. squeeze the juice of two lemons into a shaker.
- c. add 2.5 oz. of quality tequila.
- d. add 1.5 oz. of amber agave nectar.
- e. after shaking, pour into the glass, adding a corkscrew of lemon peel and a dash of chipotle powder.

HOW TO MAKE A HARD TWIST



HARD TWIST 1942 - 1962

Named after the famous Rillito Champion from the early era, the Hard Twist is Rillito Park's trademark libation. Have one. It'll make you feel like a Champion.

A Hard Twist:

- a. fill a highball glass, rimmed with salt and sugar, with crushed ice.
- b. squeeze the juice of two lemons into a shaker.
- c. add 2.5 oz. of quality tequila.
- d. add 1.5 oz. of amber agave nectar.
- e. after shaking, pour into the glass, adding a corkscrew of lemon peel and a dash of chipotle powder.

RILLTIO FOUNDATION

RILLITO RACING

2015

ANNUAL REPORTS



E-FILED

**STATE OF ARIZONA
CORPORATION COMMISSION
CORPORATION ANNUAL REPORT
& CERTIFICATE OF DISCLOSURE**

05278241

DUE ON OR BEFORE 11/07/2015

FILING FEE \$16

PLEASE READ ALL INSTRUCTIONS. The following information is required by A.R.S. §§10-1522 & 10-11522 for all organized pursuant to Arizona Revised Statutes, Title 10. The Commission's authority to prescribe this form is A.R.S. §§10-121(A) & 10-3121(A). YOUR REPORT MUST BE SUBMITTED ON THIS ORIGINAL FORM. Make changes or corrections necessary. Information for the report should reflect the current status of the corporation.

17182376

1. RILLITO PARK FOUNDATION
1090 EAST RIVER ROAD
TUCSON, AZ 85718

Business Phone: _____

(Business phone is optional.)

State of Domicile: AZType of Corporation: NON-PROFIT

2. Statutory Agent: FRANK B DEYARLO
Mailing Address: 833 W. PALMA DE COCO
City, State, Zip: TUCSON, AZ 85704

Statutory Agent's Street or Physical Address:
Physical Address:
City, State, Zip:

ACC USE ONLY	
Fee	\$ <u>10</u>
Penalty	\$ <u>0</u>
Reinstates	\$ <u>0</u>
Expedite	\$ <u>0</u>
Resubmits	_____

If appointing a new statutory agent, the new agent MUST consent to that appointment by signing below. Note that the agent address must be in Arizona, (individual) or Via, (corporation or limited liability company) having been designated the new Statutory Agent, do hereby consent to this appointment until my removal or resignation pursuant to law.

Signature of new Statutory Agent

Printed Name of new Statutory Agent

3. Secondary Address:

(Foreign Corporations are **REQUIRED**
to complete this section).

4. CHARACTER OF BUSINESS

CULTURAL

Received: 10/23/2015 05:55

ARIZONA DEPARTMENT OF CORRECTIONS

AR:0046
Rev. 12/2008

Arizona C

17182376 RILLITO PARK FOUNDATION

5. CAPITALIZATION: (For-profit Corporations and Business Trusts are **REQUIRED** to complete this section.)

Business trusts must indicate the number of transferable certificates held by trustees evidencing their beneficial interest.

5a. Please examine the corporation's original Articles of Incorporation for the amount of **shares authorized**.

Number of Shares/Certificates Authorized	Class	Series Within Class (f
0		
0		

5b. Review all corporation amendments to determine if the original number of shares has changed. Examine minutes for the number of **shares issued**.

Number of Shares/Certificates Issued	Class	Series Within Class (f
0		
0		

6. SHAREHOLDERS: (For-profit Corporations and Business Trusts are **REQUIRED** to complete this section.)

List shareholders holding more than 20% of any class of shares issued by the corporation, or having more than interest in the corporation.

NONE

7. OFFICERS

Name: JAYE WELLS
 Title: PRESIDENT
 Address: 1090 EAST RIVER ROAD
 TUCSON, AZ 85718
 Date Taking Office: 11/25/2011

Name: RUSSELL TRUE
 Title: SECRETARY
 Address: 9251 WEST TWIN PEAKS
 TUCSON, AZ 85743
 Date Taking Office: 11/25/2011

Name: FRANK DEFAZIO
 Title: TREASURER
 Address: 839 W. PALMA DE COCO
 TUCSON, AZ 85704
 Date Taking Office: 11/25/2011

Name: WALTER ROGERS
 Title: VICE-PRESIDENT
 Address: 13195 N. BOOMING DR.
 ORO VALLEY, AZ 85711
 Date Taking Office: 11/25/2011

8. DIRECTORS

Name: CHANDLER WARDEN
 Address: 37133 S M BAR J RANCH RD
 MARANA, AZ 85658
 Date Taking Office: 09/15/2013

Name: JAYE WELLS
 Address: 1090 EAST RIVER ROAD
 TUCSON, AZ 85718
 Date Taking Office: 11/01/2011

Name: FRANK DEFAZIO
 Address: 839 W. PALMA DE COCO
 TUCSON, AZ 85704

Name: WALTER ROGERS
 Address: 13195 N. BOOMING DR.
 ORO VALLEY, AZ 85711

Date Taking Office: 11/01/2011

Date Taking Office: 11/01/201

AR-0046
Rev. 12/2008

Arizona C

17182376 RILLITO PARK FOUNDATION

9. FINANCIAL DISCLOSURE (A.R.S. §10-11622(A)(9))

Nonprofits – if your annual report is due on or before September 25, 2008, you must attach a financial statement (e.g. income balance sheet including assets, liabilities). If your nonprofit annual report is due after September 25, 2008, a financial statement is not required. Cooperative marketing associations must in all cases submit a financial statement. All other forms of corporations are required to submit a financial statement no matter what date the annual report was due.

ONLY NONPROFIT CORPORATIONS MUST ANSWER THIS QUESTION:**9A. MEMBERS (A.R.S. §10-11622(A)(6))**This corporation **DOES** ☐ **DOES NOT** ☒**10. CERTIFICATE OF DISCLOSURE (A.R.S. §§ 10-202(D), 10-3202(D), 10-1622(A)(8) & 10-11622(A)(7))**

A. Has any person who is currently an officer, director, trustee, incorporator, or who, in a For-profit corporation, controls or owns 10% of the issued and outstanding common shares or 10% of any other proprietary, beneficial or membership interest in the corporation been:

1. Convicted of a felony involving a transaction in securities, consumer fraud or antitrust in any state or federal jurisdiction within the seven year period immediately preceding the execution of this certificate?
2. Convicted of a felony, the essential elements of which consisted of fraud, misrepresentation, theft by false pretenses or monopoly in any state or federal jurisdiction within the seven year period immediately preceding execution of this certificate?
3. Subject to an injunction, judgment, decree or permanent order of any state or federal court entered within the seven year period preceding execution of this certificate where such injunction, judgment, decree or permanent order involved the violation of:
 - (a) fraud or registration provisions of the securities laws of that jurisdiction, or
 - (b) the consumer fraud laws of that jurisdiction, or
 - (c) the antitrust or restraint of trade laws of that jurisdiction?

One box must be marked: YES

If "YES" to A, the following information must be submitted as an attachment to this report for each person subject to the actions stated in Items 1 through 3 above.

- | | |
|---|--|
| 1. Full birth name. | 5. Date and location of birth. |
| 2. Full present name and prior names used. | 6. The nature and description of each action; the date and location; the court involved; and the file or cause number. |
| 3. Present home address. | |
| 4. All prior addresses for immediately preceding 7 year period. | |

B. Has any person who is currently an officer, director, trustee, incorporator, or who, in a For-profit corporation, controls or owns 10% of the issued and outstanding common shares, or 20% of any other proprietary, beneficial or membership interest in the corporation in any such capacity or held a 20% interest in any other corporation on the bankruptcy or receivership of that other corporation?

One box must be marked: YES

If "YES" to B, the following information must be submitted as an attachment to this report for each corporation's statement above.

- (a) Name and address of each corporation and the persons involved.
- (b) State(s) in which it (i) was incorporated and (ii) transacted business.
- (c) Dates of corporate operation.

11. STATEMENT OF BANKRUPTCY OR RECEIVERSHIP (A.R.S. §§ 10-1623 & 10-11623)

A. Has the corporation filed a petition for bankruptcy or appointed a receiver? **One box must be marked: YES** ☒

If "Yes" to A, the following information must be submitted as an attachment to this report:

1. All officers, directors, trustees and major stockholders of the corporation within one year of filing the petition for bankruptcy or appointment of a receiver. If a major stockholder is a corporation, the statement shall list the current president, chairman of the board of directors and major stockholders of such corporate stockholder. "Major stockholder" means a shareholder controlling twenty per cent of the issued and outstanding shares or twenty per cent of any proprietary, beneficial or membership interest in the corporation.
2. Whether any such person has been an officer, director, trustee or major stockholder of any other corporation with bankruptcy or receivership of the other corporation. If so, for each such corporation give:
 - (a) Name and address of each corporation;
 - (b) States in which it (i) was incorporated and (ii) transacted business.
 - (c) Dates of operation.

12. SIGNATURES: Annual Reports must be signed and dated by at least one duly authorized officer or they will be considered false. I declare, under penalty of perjury, that all corporate income tax returns required by Title 43 of the Arizona Revised Statutes filed with the Arizona Department of Revenue. I further declare under penalty of perjury that I (we) have examined this certificate, including any attachments, and to the best of my (our) knowledge and belief they are true, correct and complete.

Name Jave Wells

Date 10/23/2015

Signature Jaye Wells

Title PRESIDENT

(Signator(s) must be duly authorized corporate officer(s) listed in section 7 of this report.)

AR-0046
Rev. 12/2008

Arizona C

17182376 RILLITO PARK FOUNDATION

Additional Directors

Name: RUSSELL TRUE
Address: 9251 WEST TWIN PEAKS ROAD
TUCSON, AZ 85743
Date Taking Office: 11/01/2011

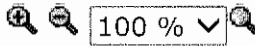
Arizona Corporation Commission



Close This
Window

Close

Rotate & Zoom



Print This
Document

Print Image





E-FILED

**STATE OF ARIZONA
CORPORATION COMMISSION
CORPORATION ANNUAL REPORT
& CERTIFICATE OF DISCLOSURE**

04973889

DUE ON OR BEFORE 03/27/2015

FILING FEE \$10

PLEASE READ ALL INSTRUCTIONS. The following information is required by A.R.S. §§10-1622 & 10-11622 for all organized pursuant to Arizona Revised Statutes, Title 10. The Commission's authority to prescribe this form is A 121(A) & 10-3121(A). YOUR REPORT MUST BE SUBMITTED ON THIS ORIGINAL FORM. Make changes or correct necessary. Information for the report should reflect the current status of the corporation.

-1914456-0

1. RILLITO RACING, INC.
1090 E RIVER RD
TUCSON, AZ 85718

Business Phone: _____

(Business phone is optional.)

State of Domicile: ARIZONAType of Corporation: NON-PROFIT

2. Statutory Agent: JAYE E WELLS
Mailing Address: 1090 E RIVER RD
City, State, Zip: TUCSON, AZ 85718

Statutory Agent's Street or Physical Addr:
Physical Address:
City, State, Zip: AZ

ACC USE ONLY

Fee \$ 10.00
Penalty \$ 0.00
Reinstate \$ 0.00
Expedite \$ _____
Resubmit \$ _____

If appointing a new statutory agent, the new agent MUST consent to that appointment by signing below. Note that the agent address must be in Arizona, (individual) or Wa. (corporation or limited liability company) having been designated the new Stat. do hereby consent to this appointment until my removal or resignation pursuant to law.

Signature of new Statutory Agent

Printed Name of new Statutory Agent

3. Secondary Address:

(Foreign Corporations are **REQUIRED**
to complete this section).

4. CHARACTER OF BUSINESS

CHARITABLE

Received: 03/17/2015 20:20

ARIZONA DEPARTMENT OF CORRECTIONS

AR-0046
Rev. 12/2008

Arizona C

-1914456-0 RILLITO RACING, INC.

5. CAPITALIZATION:(For-profit Corporations and Business Trusts are **REQUIRED** to complete this section.)

Business trusts must indicate the number of transferable certificates held by trustees evidencing their beneficial interest.

5a. Please examine the corporation's original Articles of Incorporation for the amount of **shares authorized**.

Number of Shares/Certificates Authorized Class Series Within Class (f

5b. Review all corporation amendments to determine if the original number of shares has changed. Examine minutes for the number of **shares issued**.

Number of Shares/Certificates Issued Class Series Within Class (f

6. SHAREHOLDERS:(For-profit Corporations and Business Trusts are **REQUIRED** to complete this section.)

List shareholders holding more than 20% of any class of shares issued by the corporation, or having more than interest in the corporation.

NONE

7. OFFICERS

Name: JAYE H WELLS
 Title: PRESIDENT/CEO
 Address: 1090 EAST RIVER ROAD
 ORO VALLEY, AZ 85755
 Date Taking Office: 3/27/14

Name: A RUSSELL TRUE
 Title: VICE-PRESIDENT
 Address: 9251 W TWIN PEAKS RD
 TUCSON, AZ 85743
 Date Taking Office:

Name: FRANK B. DEFAZIO
 Title: TREASURER
 Address: 839 WEST PALMA DE COCO
 TUCSON, AZ 85704
 Date Taking Office:

Name: WALTER ROGERS
 Title: SECRETARY
 Address: 13195 N BOOMING DRIV
 ORO VALLEY, AZ 85718
 Date Taking Office:

8. DIRECTORS

Name: A RUSSELL TRUE
 Address: 9251 W TWIN PEAKS ROAD
 &WHITE STALLION RANCH
 TUCSON, AZ 85743
 Date Taking Office: 03/27/2014

Name: WALTER ROGERS
 Address: 13195 N BOOMING DRIV
 ORO VALLEY, AZ 85718
 Date Taking Office: 03/27/2014

Name: JAYE H WELLS
 Address: 1090 E RIVER RD
 TUCSON, AZ 85718

Name: FRANK B DEFAZIO
 Address: 839 WEST PALMA DE CO
 TUCSON, AZ 85704

Date Taking Office: 03/27/2014

Date Taking Office: 03/27/201

AR-0046
Rev. 12/2008

Arizona C

-1914456-0 RILLITO RACING, INC.

9. FINANCIAL DISCLOSURE (A.R.S. §10-11622(A)(9))

Nonprofits – if your annual report is due on or before September 25, 2008, you must attach a financial statement (e.g. income balance sheet including assets, liabilities). If your nonprofit annual report is due after September 25, 2008, a financial statement is not required. Cooperative marketing associations must in all cases submit a financial statement. All other forms of corporations are required to submit a financial statement no matter what date the annual report was due.

ONLY NONPROFIT CORPORATIONS MUST ANSWER THIS QUESTION:

9A. MEMBERS (A.R.S. §10-11622(A)(6))

This corporation DOES ☐ DOES NOT ☒

10. CERTIFICATE OF DISCLOSURE (A.R.S. §§ 10-202(D), 10-3202(D), 10-1622(A)(B) & 10-11622(A)(7))

A. Has any person who is currently an officer, director, trustee, incorporator, or who, in a For-profit corporation, controls or owns 10% of the issued and outstanding common shares or 10% of any other proprietary, beneficial or membership interest in the corporation been:

1. Convicted of a felony involving a transaction in securities, consumer fraud or antitrust in any state or federal jurisdiction within the seven year period immediately preceding the execution of this certificate?
2. Convicted of a felony, the essential elements of which consisted of fraud, misrepresentation, theft by false pretenses or monopoly in any state or federal jurisdiction within the seven year period immediately preceding execution of this certificate?
3. Subject to an injunction, judgment, decree or permanent order of any state or federal court entered within the seven year period immediately preceding execution of this certificate where such injunction, judgment, decree or permanent order involved the violation of:
 - (a) fraud or registration provisions of the securities laws of that jurisdiction, or
 - (b) the consumer fraud laws of that jurisdiction, or
 - (c) the antitrust or restraint of trade laws of that jurisdiction?

One box must be marked: YES

If "YES" to A, the following information must be submitted as an attachment to this report for each person subject to the actions stated in Items 1 through 3 above.

- | | |
|---|--|
| 1. Full birth name. | 5. Date and location of birth. |
| 2. Full present name and prior names used. | 6. The nature and description of each action; the date and location; the court involved; and the file or cause number. |
| 3. Present home address. | |
| 4. All prior addresses for immediately preceding 7 year period. | |

B. Has any person who is currently an officer, director, trustee, incorporator, or who, in a For-profit corporation, controls or owns 20% of the issued and outstanding common shares, or 20% of any other proprietary, beneficial or membership interest in the corporation in any such capacity or held a 20% interest in any other corporation on the bankruptcy or receivership of that other corporation?

One box must be marked: YES

If "YES" to B, the following information must be submitted as an attachment to this report for each corporation's statement above.

- (a) Name and address of each corporation and the persons involved.
- (b) State(s) in which it (i) was incorporated and (ii) transacted business.
- (c) Dates of corporate operation.

11. STATEMENT OF BANKRUPTCY OR RECEIVERSHIP (A.R.S. §§ 10-1623 & 10-11623)

A. Has the corporation filed a petition for bankruptcy or appointed a receiver? **One box must be marked: YES**

If "Yes" to A, the following information must be submitted as an attachment to this report:

1. All officers, directors, trustees and major stockholders of the corporation within one year of filing the petition for bankruptcy or appointment of a receiver. If a major stockholder is a corporation, the statement shall list the current president, chairman of the board of directors and major stockholders of such corporate stockholder. "Major stockholder" means a shareholder controlling twenty per cent of the issued and outstanding shares or twenty per cent of any proprietary, beneficial or membership interest in the corporation.
2. Whether any such person has been an officer, director, trustee or major stockholder of any other corporation with bankruptcy or receivership of the other corporation. If so, for each such corporation give:
 - (a) Name and address of each corporation;
 - (b) State(s) in which it (i) was incorporated and (ii) transacted business.
 - (c) Dates of operation.

12. SIGNATURES: Annual Reports must be signed and dated by at least one duly authorized officer or they will be deemed false. I declare, under penalty of perjury, that all corporate income tax returns required by Title 43 of the Arizona Revised Statutes filed with the Arizona Department of Revenue. I further declare under penalty of perjury that I (we) have examined this certificate, including any attachments, and to the best of my (our) knowledge and belief they are true, correct and

Name JAYE B WELLS

Date 02/17/2015

Signature JAYE H WELLS

Title PRESIDENT/CEO

[Signator(s) must be duly authorized corporate officer(s) listed in section 7 of this report.]

AR-0046
Rev. 12/2008

Arizona C