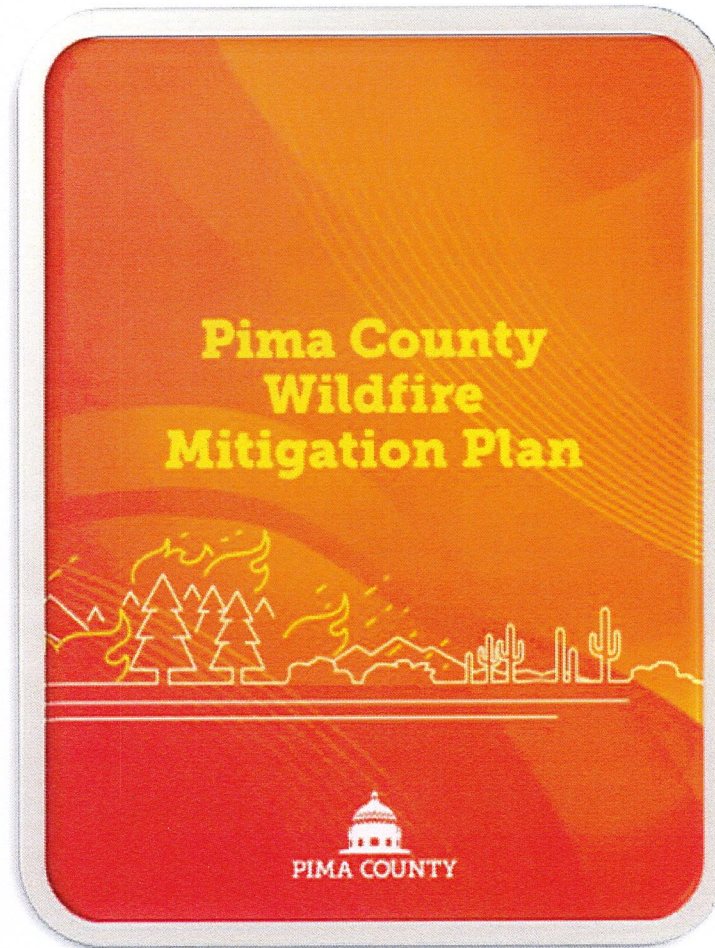
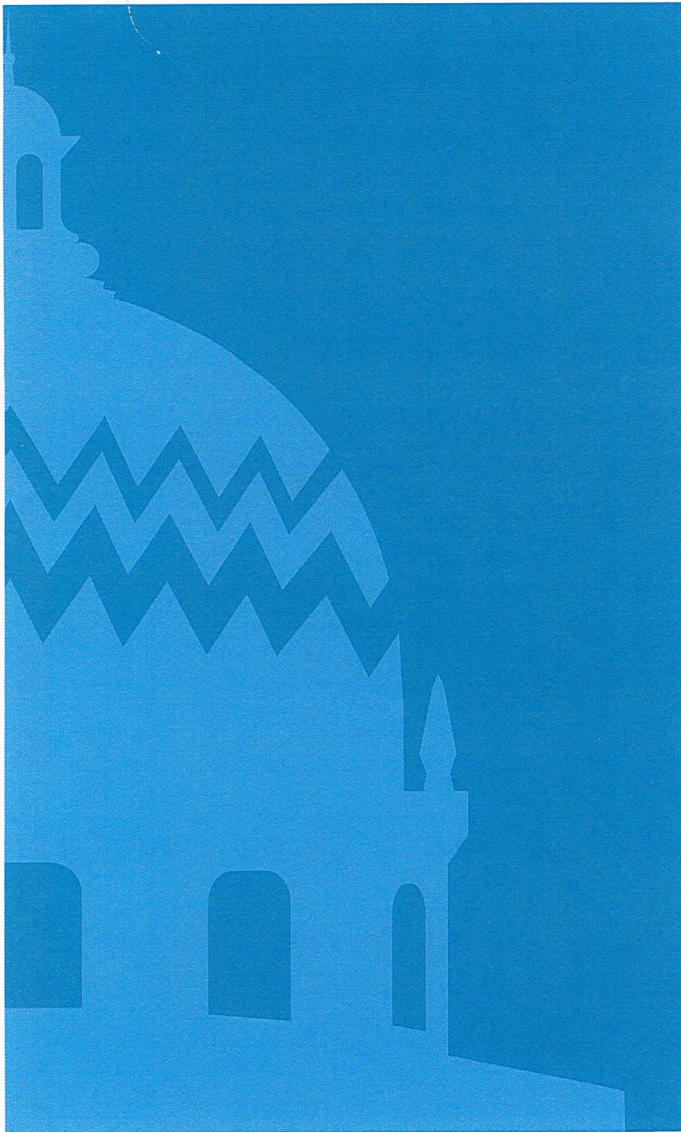


AGENDA MATERIAL

DATE 5/6/25 ITEM NO. RA 27



MAY 07 25 AM 08:45 P.C. CLK OF BD

W

SEASONAL OUTLOOK



DROUGHT

Seasonal drought outlook shows southern Arizona in D2 (Severe) and D3 (Extreme) drought conditions.



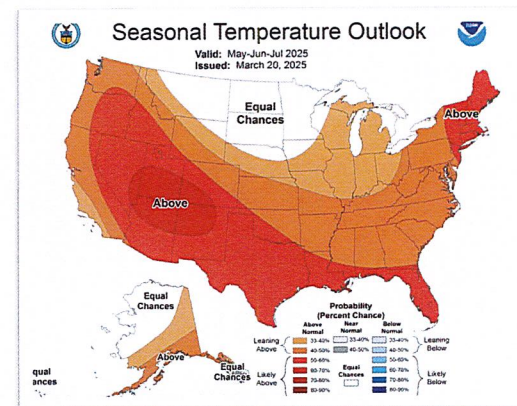
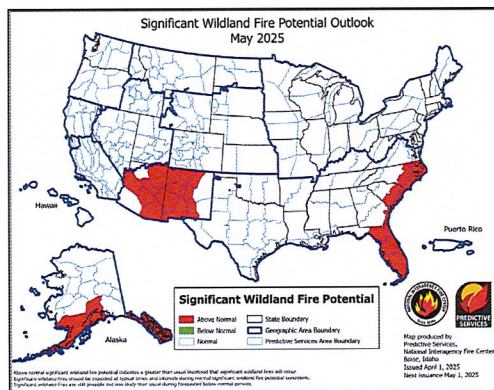
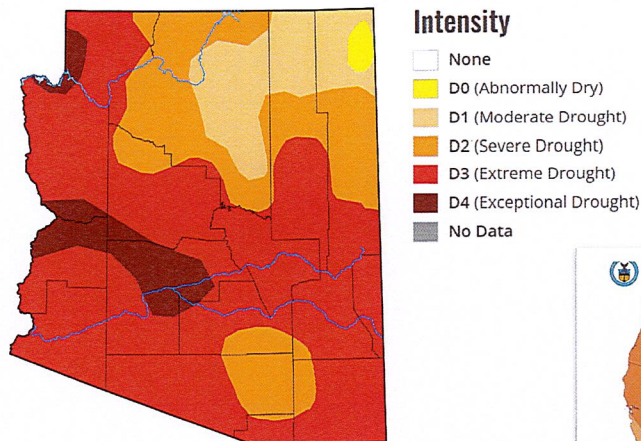
HEAT

May through July temperatures are trending 50-70% above normal.



FIRE POTENTIAL

Southeast Arizona are forecast to be in above normal potential for a significant wild land fire.





PIMA COUNTY

County Lands

Rural Interface

- Large areas of land with less density of homes
- Structures meet wildland vegetation
- Fuels spread the fire
- Large swaths of invasive plants

Urban Intermix

- High density of homes
- Wildland vegetation mixes with homes & buildings
- Structures and embers create conflagration and spread the fire

Shared Focus Areas

- Prevention efforts for defensible space
- Jurisdictional coordination
- Equitable mitigation is essential



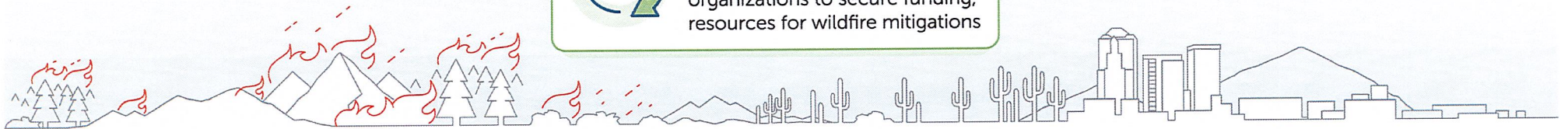
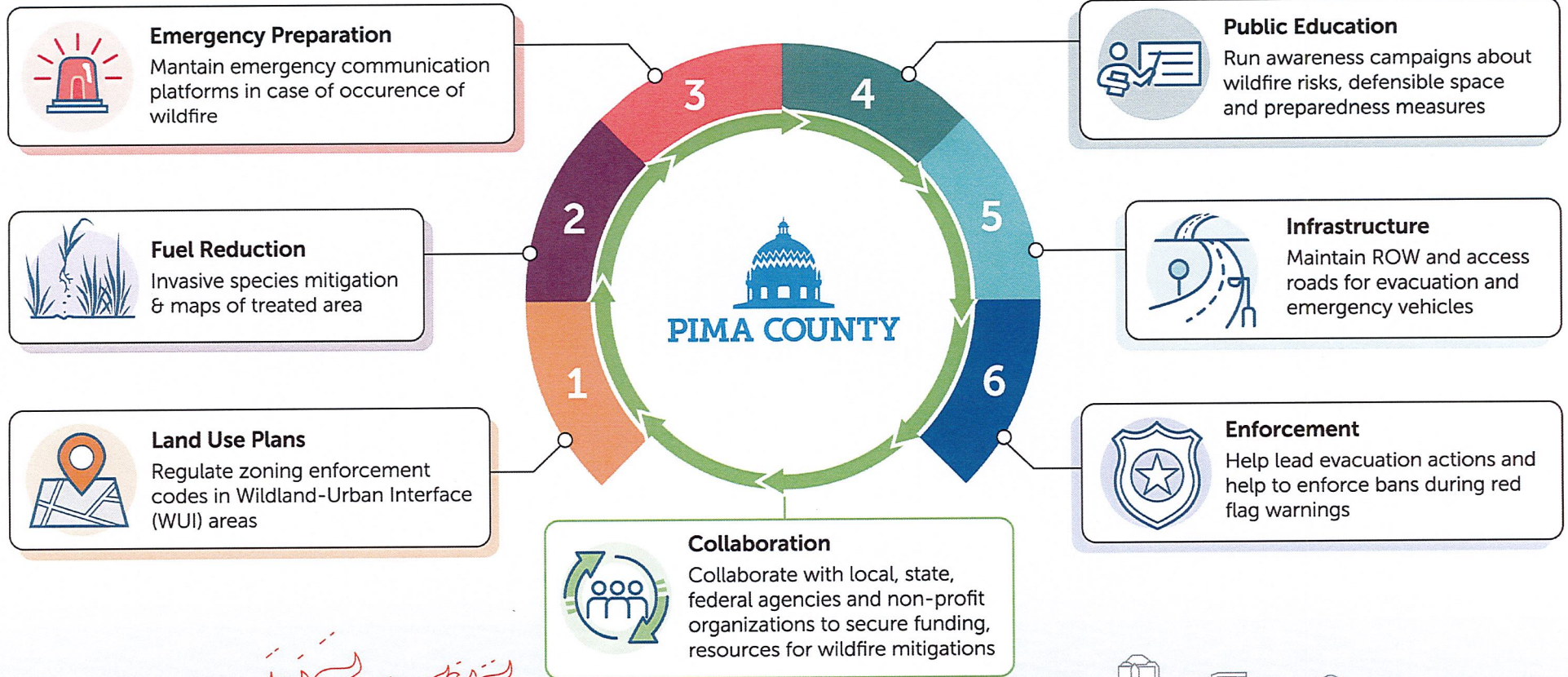
Wildfire Mitigation Goals

**PREVENTION
PUBLIC EDUCATION**

MITIGATION

**EMERGENCY
RESPONSE**

Focused Areas of Efforts





Prevention/ Public Education

Actionable Items

- ☐ Develop regional collaborative coordination calendar for Wildfire safety messages
- ☐ Increase Firewise educational principles
- ☐ Create a Wildfire site repository for prevention materials
- ☐ Increase registration for evacuation Myalerts, and knowledge of how to be prepared in case of evacuation notice



Mitigation

Actionable Items

- ☐ Explore innovative strategies for mitigation of invasive species
- ☐ Improve data tracking of found invasives in areas and treatment efforts
- ☐ Support mitigation of defensible space efforts around homes
- ☐ Encourage home hardening mitigation efforts that can help reduce structure conflagration



Emergency Response

Actionable Items

- ☐ Coordinate tabletop training opportunities for response, evacuation & recovery
- ☐ Pre-identify water sources, evacuation routes, and utility services
- ☐ Conduct regional taskforce workshops
- ☐ Record the current emergency response and recovery efforts that clearly identify roles and responsibilities of agencies

WILDFIRE MITIGATION COLLABORATORS



- Informational Technology
- Regional Wastewater Reclamation
- Communications
- Development Services
- Flood Control
- Emergency Management
- Transportation
- Environmental Quality
- Conservation Lands & Resources
- Administration





PIMA COUNTY

Board of Supervisors

Rex Scott, *Chair*, District 1

Jennifer Allen, *Vice Chair*, District 3

Dr. Matt Heinz, District 2

Steve Christy, District 4

Andrés Cano, District 5

Pima County Administrator

Jan Leshner