

APPROVED BY COUNTY ADMINISTRATOR

DENIED BY COUNTY ADMINISTRATOR

ADDITIONAL INFORMATION REQUIRED

☐

YES (SEE ATTACHED)

☒

NO

## **BOARD OF SUPERVISORS AGENDA ITEM SUMMARY**

COUNTY ADMINISTRATOR

DATE

---

ITEM SUMMARY, JUSTIFICATION & SPECIAL CONSIDERATIONS:

Final Plat without Assurances

P1213-005  
Ina-Christie  
Lots 1 – 6

**SCHEDULED FOR THE BOARD OF SUPERVISORS November 12, 2013 HEARING**  
In the Board of Supervisors Hearing Room  
First Floor, Superior Courts Building  
110 W. Congress, Tucson, AZ

**STAFF RECOMMENDATION: APPROVAL**

---

TOTAL COST TO PIMA COUNTY: \$ N/A

FUNDING SOURCE: N/A

HAS FUNDING BEEN APPROVED IN THIS FISCAL YEAR'S BUDGET:

☐

Yes

☐

No

---

ADVERTISED PUBLIC HEARING:

☒

Yes

☐

No

REQUEST FOR:

☒

Action

☐

Discussion

☐

Discussion/Action

EFFECTIVE DATE: November 12, 2013

TERMINATION DATE:    /    /   

BOARD OF SUPERVISOR DISTRICT

☒

1

☐

2

☐

3

☐

4

☐

5

☐

All

---

IMPACT:

**IF APPROVED:** This plat will create a legally subdivided property.

**IF DENIED:** The property will remain as a single piece of property.

---

AGENDA ITEM INITIATED BY: Deborah J. Marchbanks Date: October 28, 2013

DEPARTMENT NAME: Development Services Department - Subdivision Coordination

DIVISION MANAGER'S SIGNATURE: Carmine DeBonis, Jr., Director, Development Services Department

DEPARTMENT DIRECTOR'S SIGNATURE: Carmine DeBonis, Jr., Director, Development Services Dept.

CONTACT PERSON: Deborah J. Marchbanks

PHONE: 740 -6515

PROCESSING PERSON: Deborah J. Marchbanks



---

## Board of Supervisors Memorandum

---

Subject: Final Plat Approval of P1213-005  
Ina-Christie  
Lots 1 - 6  
For the Board of Supervisors Meeting Date of  
November 12, 2013  
District 1

### Recommendation

The Development Services Director recommends that the Board of Supervisors approve the final plat without assurances.

### Report

This plat conforms to County Subdivision Regulations and Conditions of the previously approved tentative plat.

Respectfully submitted,

*Leticia Haas for:*

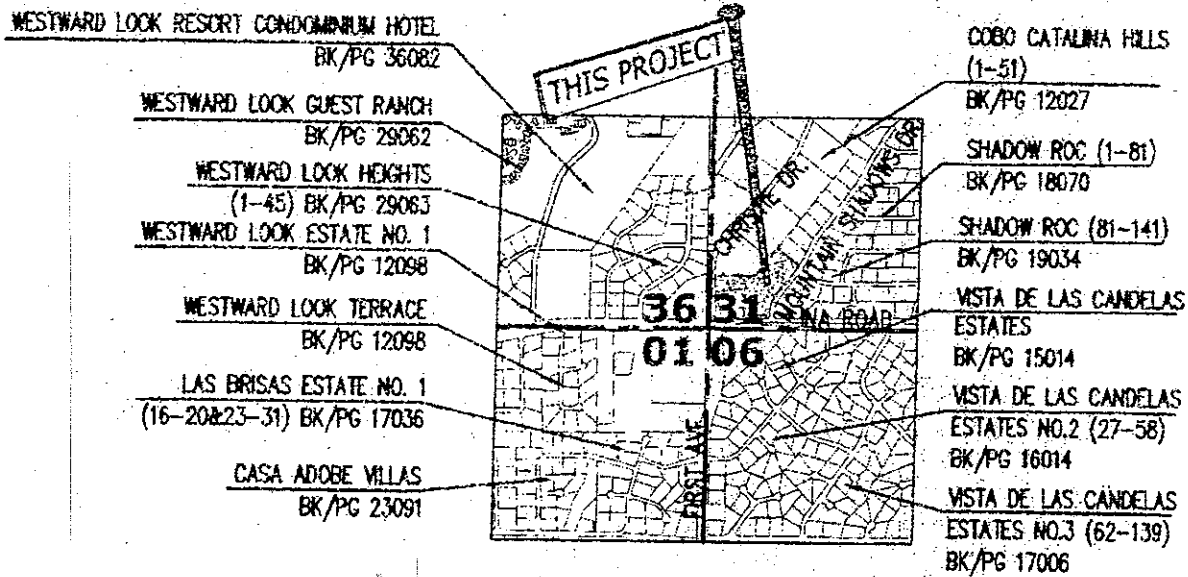
Deborah J. Marchbanks  
Subdivision Coordinator

October 28, 2013

encl: Final Plat  
Location Map

cc: Nanette Slusser, Assistant County Administrator-Public Works Policy  
Development Review (Engineering)  
Development Review (Hydrology)  
Development Review (Wastewater)  
Tucson Electric Power  
Environmental Quality  
Planning Division  
Coronado Engineering  
File (2)

# LOCATION MAP



## LOCATION MAP

SCALE: 3" = 1 MILE

A PORTION OF THE SW 1/4 OF SECTION 31,

T-12-S, R-14-E

G. & S.R.M., PIMA COUNTY, AZ.

P1213-005

Ina-Christie

Lots 1 - 6

Final Plat