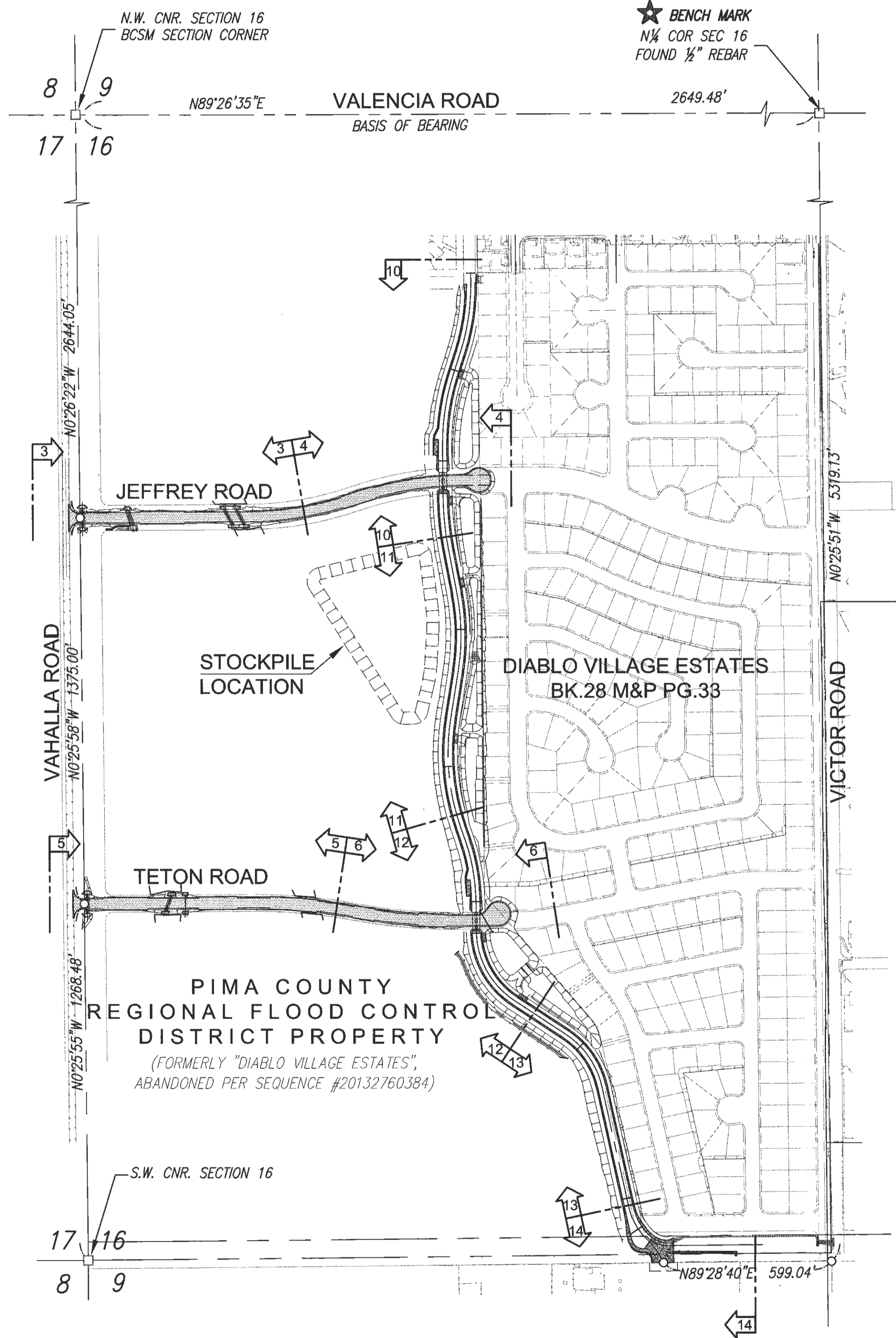


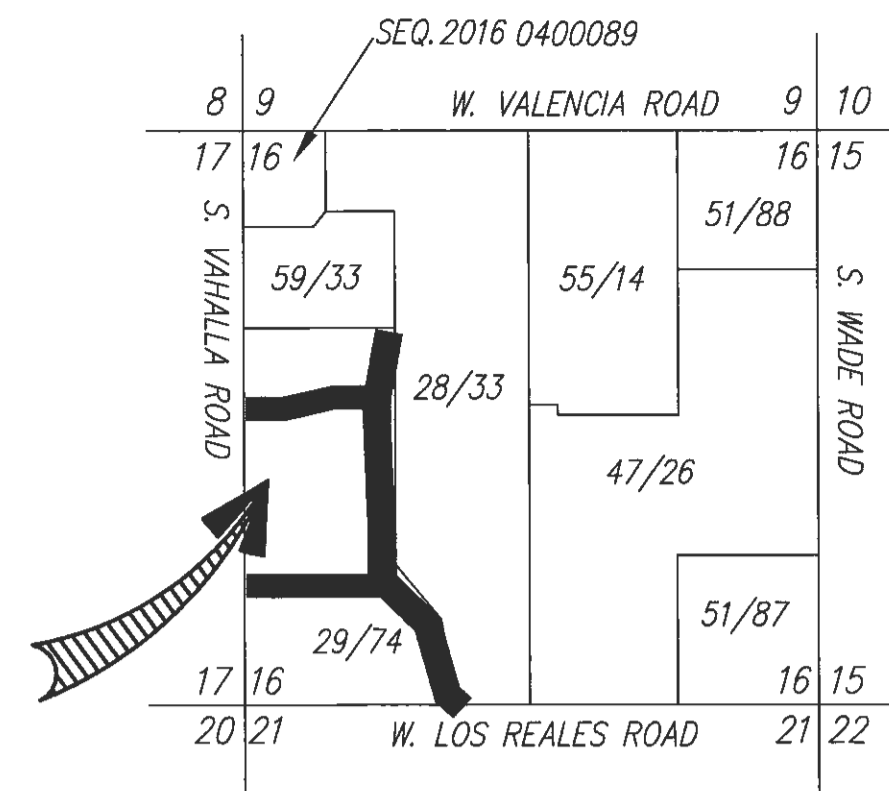
Exhibit A
DIABLO VILLAGE ESTATES
OFF-SITE PUBLIC ROADWAY AND DRAINAGE IMPROVEMENTS

ABBREVIATIONS

ABBREVIATION	DESCRIPTION
AC	ASPHALTIC CONCRETE (MIX NO.2)
ANG PT	ANGLE POINT
BCSM	BRASS CAP SURVEY MONUMENT
BVC	BEGIN VERTICAL CURVE
BW	BOTTOM OF WALL
C.A.	COMMON AREA
CFS	CUBIC FEET PER SECOND
CMP	CORRUGATED METAL PIPE
CONC	CONCRETE
CP	CONCENTRATION POINT
CTRL	CONTROL
D	DEFLECTION
DKT	DOCKET
DTL	DETAIL
EG	EXISTING GRADE
ELEV	ELEVATION
EOP	EDGE OF PAVEMENT
ESMT	EASEMENT
EVC	END VERTICAL CURVE
EXIST	EXISTING
FD	FOUND
FFE	FINISHED FLOOR ELEVATION
FG	FINAL GRADE
FPE	FINISHED PAD ELEVATION
GB	GRADE BREAK
HP	HIGH POINT
HT or H	HEIGHT
INV	INVERT
L	LENGTH
LF	LINEAR FEET
LP	LOW POINT
LT	LEFT
MAX	MAXIMUM
MH	MANHOLE
MIN	MINIMUM
PAG	PIMA ASSOCIATION OF GOVERNMENTS
PC	POINT OF CURVATURE
PG	PAGE
PI	POINT OF INTERSECTION
PT	POINT OF TANGENCY
R	RADIUS
R/W	RIGHT OF WAY
RCP	REINFORCED CONCRETE PIPE
REINF	REINFORCED
RT	RIGHT
S	SLOPE
SF	SQUARE FEET
SHT	SHEET
SRP	SPIRAL RIBBED PIPE
STA	STATION
THK	THICK/THICKNESS
TW	TOP OF WALL
TYP	TYPICAL
W	WIDTH
WSEL	WATER SURFACE ELEVATION
WWF	WELDED WIRE FABRIC



THIS PROJECT



LOCATION MAP

LOCATED IN THE SW QUARTER, SECTION 16, T 15 S, R 12 E, G&SRM, CITY OF TUCSON, WARD 4, PIMA COUNTY, ARIZONA



SHEET INDEX

#	DESCRIPTION
1	COVER SHEET
2	NOTES & TYPICAL SECTIONS
3-4	JEFFREY RD.
5-6	TETON RD.
7-9	CULVERT DETAILS
10-14	CHANNEL PLAN & PROFILES
15-16	CHANNEL DETAILS AND SECTIONS
17-18	SIGNING & STRIPING PLAN
19	STOCKPILE PLAN
20	STRUCTURAL DETAILS

LEGEND

	EXIST. MAJOR CONTOUR
	EXIST. MINOR CONTOUR
	PROPOSED LOT LINE
	EXISTING RIGHT-OF-WAY LINE
	PROPOSED RIGHT-OF-WAY LINE
	EXIST. PAVEMENT
	PROPOSED PAVEMENT
	EXISTING EASEMENT LINE
	PROPOSED EASEMENT LINE
	PROPOSED SPOT ELEVATION
	DIRECTION OF FLOW
	SLOPES
	SIGHT VISIBILITY TRIANGLE (SVT)
	EXISTING RIPRAP
	PROPOSED RIPRAP
	PROPOSED CONCRETE BANK PROTECTION
	PROPOSED CULVERT
	PROPOSED WATER MAIN & VALVE

DEVELOPER

RB PRICE AND COMPANY, INC.
 6300 E. EL DORADO PLAZA
 SUITE 8400
 TUCSON AZ 85715
 PHONE: (520) 298-3311
 FAX: (520) 664-5219
 priceandco@aol.com

CIVIL ENGINEER

STANTEC CONSULTING, INC.
 5151 E. BROADWAY BLVD., STE. 400
 TUCSON, AZ 85741
 ATTN: COREY R. THOMPSON, P.E.
 PHONE: (520) 750-7474
 FAX #: (520) 750-7470
 corey.thompson@stantec.com

BASIS OF BEARING:

THE NORTH LINE OF THE NORTHWEST QUARTER OF SECTION 16, TOWNSHIP 15 SOUTH, RANGE 12 EAST, G.&S.R.M. BETWEEN A FOUND 3" BCSM AT THE NORTHWEST CORNER AND A FOUND 1/2" REBAR AT THE NORTH 1/4 CORNER THEREOF. SAID BEARING BEING NORTH 89°26'35" EAST, AS SHOWN HEREON.

BENCH MARK

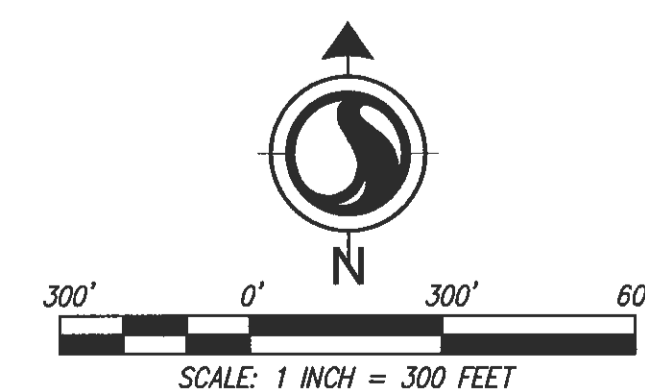
PIMA COUNTY PID-MBP0151, 1/2" IRON PIN AT THE NORTH 1/4 CORNER OF SECTION 16 @ THE INTERSECTION OF VALENCIA RD AND VICTOR RD. EL=2477.91'. DATUM=N.A.V.D. 88

EARTHWORK ESTIMATE:

(FILL QUANTITIES REFLECT 20% SHRINK.)

CUT: 79,780 C.Y.
 FILL: 11,560 C.Y.
 NET: 68,220 C.Y. STOCKPILE

AREA OF DISTURBANCE:
 PROJECT GRADED AREA: 16.74 AC.
 STOCKPILE AREA: 2.18 AC.
 TOTAL DISTURBED AREA: 18.92 AC.



5151 E. Broadway Blvd., Suite 400
 Tucson, AZ 85711
 www.stantec.com

Revision	By	Appd.	Date

Client/Project
 RB PRICE COMPANY
 DIABLO VILLAGE ESTATES
 OFF-SITE PUBLIC ROADWAY AND DRAINAGE IMPROVEMENTS
 Tucson, Arizona

Permit-Seal



Project Number: 180101531
 File Name: 17.07.03

LWHTL	CR1	LWH	17.08.10

Drawing No.
 Revision Sheet



P17SC00045